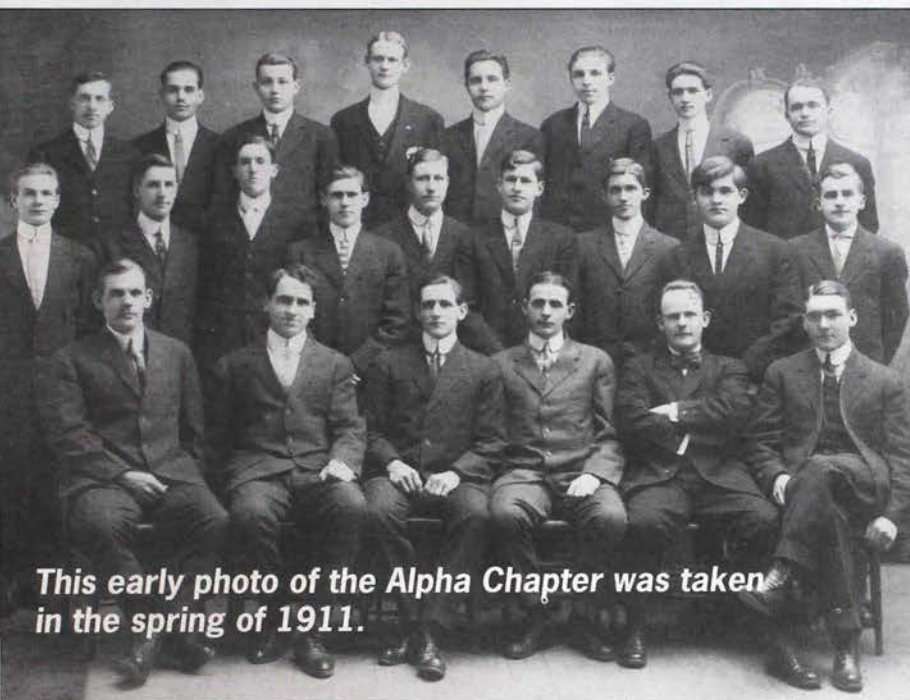


# Quill & Scroll

WINTER 2001

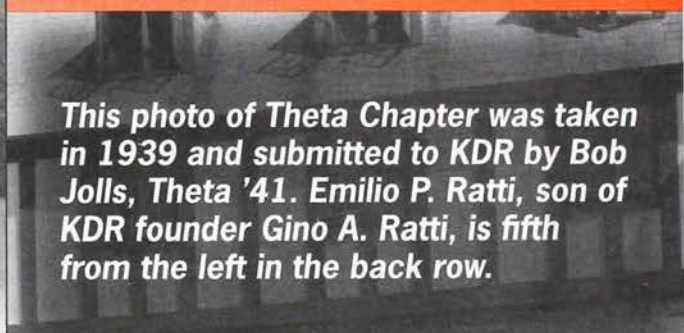
THE MAGAZINE OF KAPPA DELTA RHO



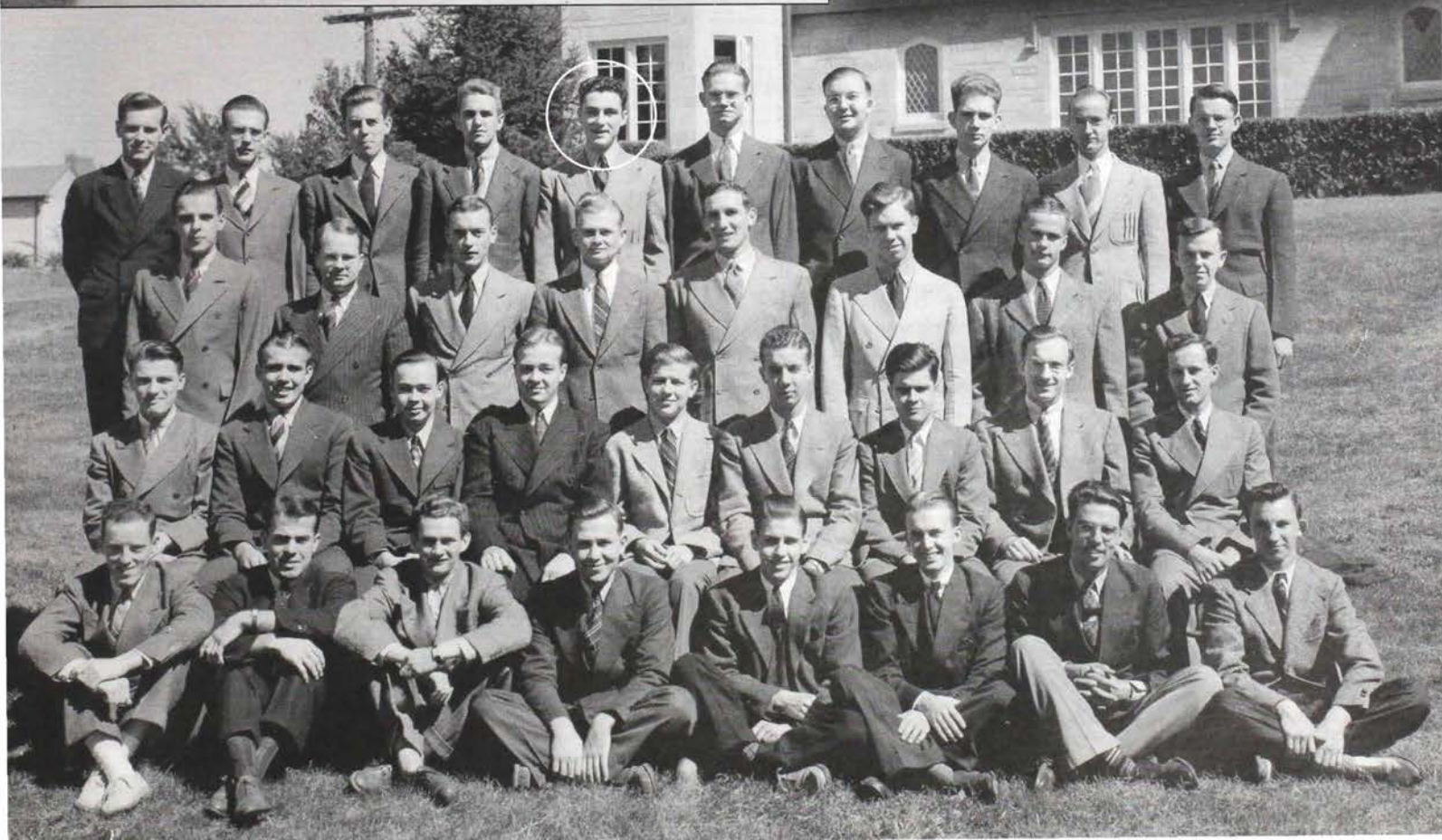
This early photo of the Alpha Chapter was taken in the spring of 1911.

## INSIDE:

*A New Charter for Alpha  
Foundation Annual Report  
2000 Convention Wrap-up  
Staff Changes at KDR*



This photo of Theta Chapter was taken in 1939 and submitted to KDR by Bob Jolls, Theta '41. Emilio P. Ratti, son of KDR founder Gino A. Ratti, is fifth from the left in the back row.





## From the President

I want to take this opportunity to share an observation, point out a challenge that I think we face and solicit your comments and suggestions.

For the past year, I have found myself making comparisons between KDR today and KDR 45 years ago. My opinion is that change has been minimal — both in KDR and in the overall Greek community. Some of you will certainly say "that's great, why should we change — KDR was good to me and I had fun during my undergraduate days, so no change is good news." However, is it possible that any organization can remain healthy and grow while essentially maintaining the status quo, in the midst of major change as a daily constant throughout society and the world?

I recently attended the annual convention of the North-American Interfraternity Conference, which represents 68 national fraternities. Something that struck me rather vividly is that there is insignificant difference between KDR and the other 67. All of the fraternities are working diligently to grow and stay healthy, and we are doing it using the same customer base. If I was in a business that had 67 competitors, all selling the same product to the same customer source, I would not only be concerned about the future, but I would be looking for a creative way to define my product in a unique manner so that I could capitalize on a defined "niche" market.

As KDR approaches the 100-year anniversary I believe we must find a way to differentiate ourselves from the "pack" and to develop a KDR "niche" that can become synonymous with a unique aspect in society. This must be done to the point that before students begin college they will be familiar with the name KDR and our reputation for being an organization of which they want to be a member.

Now, what do we do to be unique among the fraternities and to have a positive and far-reaching reputation that brings high caliber students to our door? I'm not sure, but in several small discussions recently, I've heard KDR's suggest that we should have significant

national involvement in such things as charitable events, children's programs and mentoring. From a national standpoint, we are very interested in your input and suggestions.

Again, during my KDR life I believe that the Greek community has been coasting, while society has moved from nothing in space to nearly weekly space travel from slide-rules to computers from rotary phones to space satellites providing instantaneous worldwide data links. Where did the names Toyota, Nissan and Honda come from, and how did they capture a major share of the auto market? Not only is change inevitable, but several weeks ago, GM announced that Oldsmobile will be discontinued; couldn't find a niche. And, now Montgomery Ward, after 128 years in business, is closing its doors. Ward's said the problem was a difficult environment (sounds like fraternities), but several analysts said the biggest problem was failure to create a unique identity.

Enough on this subject for now. We continue to be healthy, we are in the game to stay. We do compete and offer strong competition to all the other fraternities, and we have a winning record.

As with you, KDR is very dear to my heart and there are many aspects about fraternity life that should not, and will not, change. However, for the good of KDR we must be sure that our thinking is not "confined to the box." Keep in touch and let me hear from you.

Fraternally,  
Bob Swinney, Sigma '58  
President

[bobswinney@erols.com](mailto:bobswinney@erols.com)



## From the Executive Director

### The GOOD NEWS about FRATERNITIES and today's YOUNG PEOPLE.

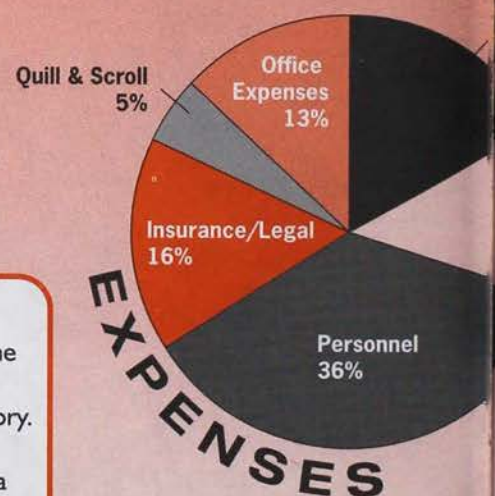
Is this a headline you don't see very often? You should, and here is why!

Bad press about fraternities highlights the isolated failures and lapses in judgment that young people have been afflicted by forever. Each of us tends to forget about our own transgressions and mistakes, and we remember our undergraduate days as a flawless experience.

The truth is that young people today are stronger than they have been in a long time in a number of important areas.



## KDR INCOME AND EXPENSES



TOTAL

## NATIONAL FRATERNITY STAFF CHANGES

### Peter J. Tartaro, Lambda Beta '00, Joins Office

Pete graduated in December 2000 from James Madison University in Harrisonburg, VA, home of the Lambda Beta chapter. He majored in political science and speech communications with a minor in music. Pete served his chapter as consul, senior tribune and pontifex/chairman of Advisory. He was also active in the IFC for several years. His future plans include going to law school.

In Pete's own words, "It is an exciting time to be a member of KDR and I am just glad to be a part of the national office."

### Goodbye Scott Bradley

Wm. Scott Bradley, Zeta Beta '99 (Tarleton State), decided to give up his city shoes and head back to the Lone Star State. Last October, we bade farewell to Brother Bradley as he returned home to work for Great Western Directories and World Pages.com. We will miss his positive contributions to strengthening the fraternity. He will remain involved with the National Fraternity as a volunteer working on a variety of topics. We wish him the best of luck in his future endeavors!



FACTS

- \* In the past two decades, the number of freshmen who have reported drinking beer frequently or occasionally in the past year has decreased by 24.5%.
- \* 75% of freshmen have engaged in volunteer work in the past year.
- \* Half of all college freshmen did not drink alcohol in the past year.

What you also don't read about is the thousands of members each year who:

- \* Improve their personal communication, leadership and academic skills.
- \* Engage in countless hours of community service.
- \* Raise millions of dollars a year for charitable causes.
- \* Make life-long friendships that will continue to aid their individual development for years to come.

The good news is that fraternities provide solutions and today's young people are an exciting, intelligent and interesting group. We are building a better society and world, one brother at a time.

Now is a time to celebrate Kappa Delta Rho!

*Fraternally,*  
*Christopher B. Miller, Tau Alpha '97*  
*Executive Director*



Staff Changes at KDR.....	2
2000 Convention Wrap-up.....	4
Foundation Annual Report.....	7
Chapter Awards and Scholarships.....	14
New Charter for Alpha .....	17
DC Alumni Event a Success.....	17
Chapter Eternal.....	18
Mailbag .....	18
Directory.....	19

Quill and Scroll (USPS 605-402), an educational journal, is published two times a year by Kappa Delta Rho, Inc., 331 South Main Street, Greensburg, PA 15601. Forward all correspondence, manuscripts, and changes to the National Office.

**EXECUTIVE EDITOR:** Christopher B. Miller, Tau Alpha '97  
**ASSOCIATE EXECUTIVE EDITOR:** Jonathan H. Lay, Mu Beta '99  
**CONTRIBUTING EDITOR:** Paul A. Downes, Gamma '69

EXPENSES — FISCAL YEAR 1999-2000

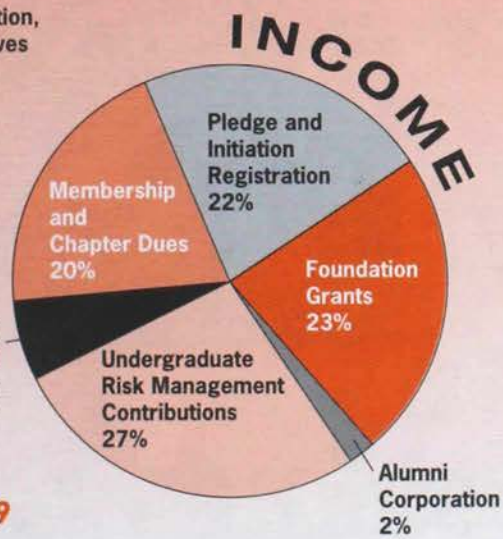
Chapter Programs,  
National Operation  
Expenses 17%

**TOTAL EXPENSES: \$395,877**

National Convention,  
Regional Conclaves  
13%

Interest, Royalties  
Supplies, Additional  
Convention Reps, Misc  
6%

**INCOME: \$427,039**



**NATIONAL OFFICE**  
331 SOUTH MAIN STREET  
GREENSBURG, PA 15601  
1-800-536-5371 • [www.kdr.com](http://www.kdr.com)

**FRATERNITY**  
**Christopher B. Miller**  
*Executive Director*  
[Chris@kdr.com](mailto:Chris@kdr.com)  
Extension 12

**Suzanne M. Balash**  
*Office Manager*  
[Sue@kdr.com](mailto:Sue@kdr.com)  
Extension 10

**Scott A. Johnson**  
*Director of Programming  
and Member Services*  
[Scott@kdr.com](mailto:Scott@kdr.com)  
Extension 13

**Peter J. Tartaro**  
*Programming Coordinator*  
[Pete@kdr.com](mailto:Pete@kdr.com)  
Extension 17

**Jonathan H. Lay**  
*Programming Coordinator*  
[Jon@kdr.com](mailto:Jon@kdr.com)  
Extension 14

**FOUNDATION**  
**Patrick Uram**  
*Director of Gift Planning  
and Development*  
[Patrick@kdr.com](mailto:Patrick@kdr.com)  
Extension 15

**VISIT OUR WEBSITE!**

[www.kdr.com](http://www.kdr.com)

Read the latest KDR news!

Locate other brothers'  
e-mail addresses!

Update your contact information!



# **2000 Williams Leadership Academy and National Convention**

**August 10 - 13, 2000 • Philadelphia, PA**

## *DAY 1 — THURSDAY*



### **10 a.m. Facilitators' Meeting**

A team of facilitators led undergraduate focus group discussions throughout the academy. KDR was fortunate to have 12 dedicated individuals from various areas of Greek life and KDR volunteer their time to make the event a success.

### **1 p.m. Opening Session**

All undergraduates arrived before to 1 p.m. on Thursday for the opening session. Small groups were formed to create a teamwork approach for the leadership curriculum. Justin Lookadoo, Zeta Beta '93, served as our keynote presenter and opened up the Leadership Academy with an exciting, hilarious and motivational session.

### **2 p.m.**

Full group presentations were followed with focused group teamwork activities. These smaller teams, made up of 8 to 10 undergraduates, and led by volunteer facilitators, processed the leadership topics on a more intimate and personal level. Each group created a coat of arms to identify their values.

### **3:30 p.m. - 9:30 p.m.**

Leadership development

### **10 p.m. - 12 a.m. - Facilitator Meeting**

Wrap-up and preparation for the next day.







### 9 a.m. - 5 p.m. - Programming Continues

Friday's topics included pledge education, recruitment, service learning, risk management and much, much more. Linda Wright, partner, LMS Risk Management Services, facilitated a "real-life" simulation centering around a fraternity litigation.



The alumni corporation representatives and volunteers also had a great deal to do and learn as they participated in their own educational programming. The 2000 Williams Leadership Academy began a new focus on alumni programming and was a success with more than 20 alumni delegates participating.

## DAY 2 — FRIDAY



### 5 p.m. - Graduation

Each student received a leadership academy graduation certificate and took a photo of their team with the Ratti Stone.







*Beta Chapter brothers*

**6 p.m.**

**Pizza Party** sponsored by the Rho, Alpha Beta and Eta Beta Chapters. These chapters were very generous and hosted a pizza party for all the weekend's participants.

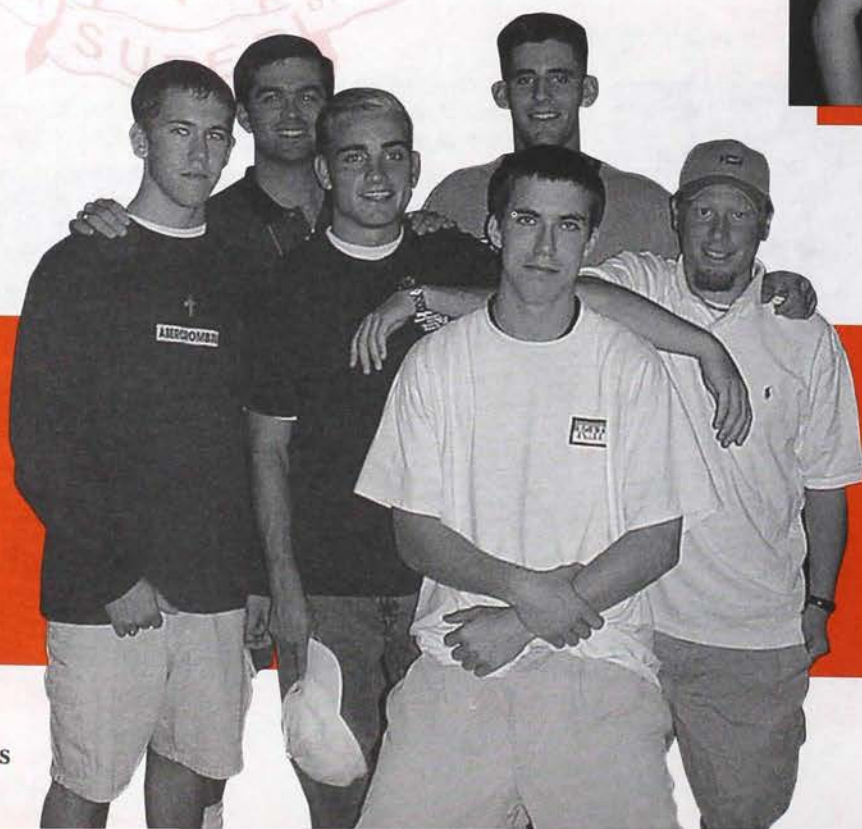
**7 p.m. - 11 p.m.**

**Philadelphia Area Alumni Social**

Alumni from around the Philadelphia area were invited to join the convention attendees for an informal social evening.

## DAY 2 — FRIDAY

*Scott Johnson, director of programming and member services, his guest and Mark West, vice president for alumni affairs*



*Lambda Beta Chapter attendees at the social*



# Kappa Delta Rho Foundation

As you learned in the last issue of the *Quill & Scroll*, Paul Downes, who served as president of our foundation for over seven years, has stepped down. Under Paul's capable leadership the foundation's assets have grown to over 1.2 million dollars, and we all owe him a debt of gratitude for that accomplishment. Fortunately, Paul has agreed to continue to serve on the foundation board in the capacity of secretary and vice president of the general fund. We are blessed to be able to continue to draw on Paul's experience and enthusiasm.

At our foundation board's annual meeting in August in Philadelphia I was elected the foundation's new president. I am looking forward to this new responsibility, but already know that any success I might enjoy will only be possible with the help and cooperation of all of our alumni.

For the campaign year July 1, 1999 to June 30, 2000 you generously contributed about \$325,000 to the foundation. Just under \$100,000 was funneled to the fraternity for authorized expenditures to support leadership training and educational pursuits of the undergraduate members. Just over \$170,000 were restricted gifts to be added to various endowment and scholarship funds. The balance of contributions received was used to support various foundation expenses connected principally with raising the money.

In addition to the support for our fraternity mentioned above, your foundation was able to grant about \$36,000 in scholarships to 26 deserving young undergraduates. The money for these awards came essentially from endowment investment income, which lately has grown each year. These scholarships were announced at our annual meeting in August. It is a great pleasure to watch our young members accept this assistance from your fraternity, one I hope each of you will be able to view someday.

As you also learned through our last *Quill & Scroll*, Bill Paris, our long-time director of gift planning and development, has moved to another position outside of KDR as his career grows. We have been very fortunate in successfully recruiting Patrick Uram to succeed Bill. Patrick joins us after successful stints in banking at the Mellon Bank, in administration at the Czech Management Center in the Czech Republic, and, more recently, as director of the American Chamber of Commerce in the Slovak Republic. Patrick was an undergraduate at

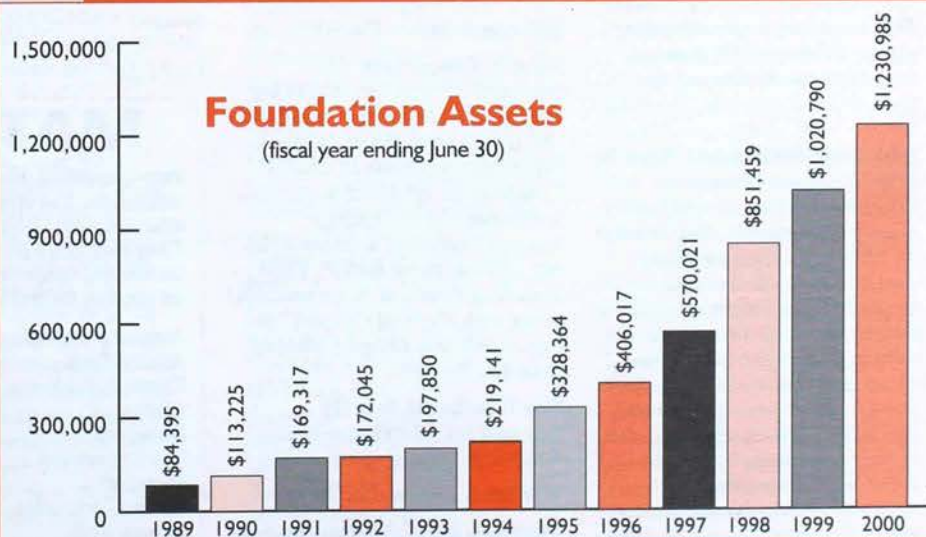
Washington & Jefferson College and holds a graduate degree from the Graduate School of Public and International Affairs of the University of Pittsburgh. I hope each of you will get to know this fine young man as he leads our foundation into the future. Please be as gracious to him as you have been over the years to Bill Paris.

At our August meeting, we added a new trustee to the foundation board. Our new trustee is Mike Mueller, a 1995 graduate of the University of Illinois (Eta Chapter). Mike lives in Springfield, IL, where, as a Certified Public Accountant and Chartered Financial Planner, he is involved with private asset management and financial planning for Wealth Management Services, LLC. Mike brings a new enthusiasm and a youthful view to our board and I look forward to his help over the next few years.

Unfortunately, we also said adieu at our August meeting to John C. Carl (Theta, '51). John has been dealing with

some health issues recently and has decided he can no longer serve as a trustee. John has been a marvelous member of our fraternity over the years. He has served for several years as a director of the fraternity and more recently as a trustee of the foundation. He has been a strong supporter both financially and in time and effort for more years than most of us can remember. It is the opportunity to serve with brothers like John that makes our fraternity service memorable. I will miss John's counsel and support, and we wish him better health and a well-earned rest.

Fraternally,  
David R. Hamrick, President  
Zeta '57





# LET ME INTRODUCE MYSELF...

By Patrick Uram  
Director of Gift Planning and Development

At the August 2000 Williams Leadership Academy, I was chosen by the Board of Trustees as the Director of Gift Planning and Development of the Kappa Delta Rho Foundation. I accepted that appointment with honor and I look forward to serving the board and you with distinction.

In this edition of the *Quill & Scroll* I would like to introduce myself, talk about recent Foundation activity and discuss our plans for the near-future.

I earned my undergraduate degree in 1986 from Washington and Jefferson College where I majored in History and Business. While at W&J I was active in my fraternity Zeta Beta Tau, having served as treasurer, as well as other leadership positions. I was also active in student government as treasurer. Finally, upon graduation I served as a trustee of my chapter until 1993.

Professionally, my first position post-W&J was with Mellon Financial Services as an account manager in the Bank Custody division. In 1990, I left Mellon to pursue my Master's degree from the University of Pittsburgh's Graduate School of Public and International Affairs. Subsequently, I moved to Prague to manage the international MBA Program at the

Czechoslovak Management Center. After three years, I managed the American Chamber of Commerce in the Slovak Republic, returning to the States in 1999.

I have also been active in the non-profit sector serving on the boards of the Washington County History and Landmarks Foundation, Washington County Historical Society and the Malcolm Parcell Art and Historical Society. I believe, as does the board of trustees, that these experiences, from fraternal to business to non-profit, will enable me to continue the expansion of the efforts and mandates of the Kappa Delta Rho Foundation.

Plans for the new year are well underway. The General Fund campaign for the fiscal year 2000-2001 continues to gain momentum. More than \$30,000 was raised in December. Your contribution to the General Fund continues to enable us to provide the fraternity with the programming grants that result in events such as the Williams Leadership Academy. I had the pleasure of attending the August 2000 academy and came back with a genuine appreciation for the KDR motto "Honor Before All Things". Your consistent support of the General Fund is both appreciated and necessary. The Vision 2000 Campaign also continues to progress. The success of the five year \$5 million dollar campaign is vital for our long-term objectives. Note the campaign

counter on the back page of this *Quill & Scroll*. If you still have not made a pledge, please consider one today. If you have already made a pledge,

thank you for remaining current with your commitment.

The board of trustees will meet in Philadelphia the first weekend of March for our semi-annual meeting. At this meeting Delano (Del) Newkirk, a 1961 graduate of Indiana University (Nu Chapter) will be added as a trustee. Del lives in Nashville, TN with his wife Lettie. Del's experience as owner of several fast food restaurants in Missouri, Kansas, Oklahoma and Colorado will be a definite asset to the Foundation as we move forward.

Finally, one of the true pleasures of working with the KDR Foundation is being the person responsible for administering our scholarship program. This year we have pushed the application deadline back to April 15th and will be implementing an ambitious marketing campaign so that more KDR's are aware of and take advantage of the scholarships we have to offer. If you know of any deserving KDR's (and remember there are graduate scholarships as well), contact me at the national office.

Thank you and again I look forward to an exciting future with Kappa Delta Rho.



## Founder's Society

*THE FOUNDER'S SOCIETY is the top donor recognition category of the Kappa Delta Rho Foundation. The Society has four levels within which it recognizes the unrestricted gifts of donors each year. We are very proud to recognize the many alumni each year who make very generous contributions to support the programs funded by the Foundation.*

*There are several levels of giving recognition with the Founder's Society: Benefactor, \$1,000-\$2,499; Philanthropist, \$2,500-\$4,999; Patron, \$5,000-\$9,999; and Grand Patron, \$10,000 or more.*

*The Foundation is pleased to recognize the following NEW members since the last publication of the Quill & Scroll.*

### John (Jack) Sachleben, Beta '56

After a company transfer to Charleston, Jack took early retirement from Gruman after 34 years in 1990. Since then Jack has worked for South Carolina Department of Commerce and is now an activist in local issues such as port expansion, infrastructure improvements, environmental protection, and growth. Jack adds, "Travel, mainly to visit children currently located in London, San Francisco and Washington DC takes up lots of time along with my continuing attempts to shoot my age on the

golf course before I'm 90!"

### Scott A. Crego, Beta '86

Scott and his wife Ann Marie live with their two children Andrew (8) and Carolyn (5) in Clarence NY. Scott, a graduate of Cornell University in 1986, and is currently President of the Frank P. Langley Company, a manufacturing representative for ITT Fluid Handling Products. Scott remains active with the Beta Chapter, having served Beta Chapter Alumni Board in the past.

### Roy P. Jackman, Iota '49

Roy and his wife Shirley live in Sandwich Massachusetts.

### William Goodwin, Nu '61

*There was one \$1000 donation that was anonymous.*

### RENEWALS AS OF 6/30/2000

#### PATRON

(\$5,000-\$9,999)

James H Buterbaugh, Zeta '55  
Andrew F Barth, Nu Alpha '83

#### PHILANTHROPIST

(\$2,500-\$4,999)

David R Hamrick, Zeta '57  
George J Peer, Theta '45  
Lee H Idleman, Iota '54  
Thomas C Lockwood, Nu '56

#### BENEFACTOR

(\$1,000-\$2,499)

Robert P Youngman, Alpha '64  
Scott A Crego, Beta '86  
Thomas S Loane, Beta '67  
Jay D Luft, Beta '79  
Mrs. Commerford B Martin, Beta '33  
Michael A McCarthy, Beta '57  
John H Sachleben, Beta '56  
Paul A Downes, Gamma '68

Edward H Dickson, Delta '40  
George A King, Delta '81  
S Carlisle Botts, Epsilon '30  
James D Kowalski, Epsilon '57  
Timothy F Moore, Eta '68  
William J Paris, Eta '87  
William C Benton, Theta '59  
Fred O Cook, Theta '63  
V Richard Miller, Theta '63  
Charles W Berger, Iota '75  
Gary J Buchmann, Iota '79  
Robert D Lynd, Iota '67  
Thomas V McComb, Nu '59  
Jon P Pensyl, Pi '60  
Murray G Clay, Rho '30  
Ray C Hunt, Rho '53  
Richard D Kline, Rho '61  
Howard A Rubin, Rho '77  
Loran L Stewart, Sigma '32  
Robert L Swinney, Sigma '58  
James C Hubbard, Psi '66  
Robert L Gett, Omega '72  
Steven Schilson, Gamma Alpha '65

## MATCHING GIFTS

Many corporations offer their employees the opportunity to increase their charitable contributions. They do this through matching gift programs. Some are 1-for-1 matches, others are 2-for-1 matches. Check with your Human Resources Department and see if they have such a program at your workplace. **Matched gifts** were received from the following companies in the fiscal year ended 6/30/2000. Thanks to those brothers who took the time to complete the matching gift forms.

Allegheny Technologies ..... Russel Patton, Theta '51  
Alliance Corp. .... Scott McElroy, Alpha Society '87  
Carter Wallace, Inc. .... Glen Gnirrep, Friend (Omicron Alpha)  
Clariant ..... Daniel Packer, Iota '67  
Honeywell ..... Garland Boothe, Iota '84  
Lilly Endowment ..... William Goodwin, Nu '61  
Microsoft ..... Peter Byrne, Tau Alpha '88  
St Paul Companies, Inc. ....  
Foundation ..... Michael Gorman, Rho '86  
United Parcel Service ..... Stephen Knapp, Iota '84



**GORDON RUSSELL NORTON SOCIETY  
(\$750-\$999)**

Russell A Norton, Alpha '38  
Howard F Crumb, Beta '53  
Scott A Bailey, Zeta '69

**CHESTER MONROE WALCH SOCIETY  
(\$500-\$749)**

Raymond B. Strong, Alpha '91  
Richard R Gans, Beta '80  
Larry T Harada, Beta '79  
David R May, Beta '80  
Ray A Alberigi, Zeta '57  
Donald P Phillips, Zeta '57  
R Marshall Phillips, Zeta '60  
Howard F Brown, Eta '31  
David L Rathgeb, Eta '73  
John Doddridge, Theta '61  
Peter W Strong, Theta '49  
Roy P Jackman, Iota '49  
Delano L Newkirk, Nu '61  
Edward B Curtis, Rho '62  
David K Bernstein,  
Omicron Alpha '88  
Douglas M Rammel, Pi Alpha '90  
Douglas M. Miller, Tau Alpha H  
J Hall Jones, Lambda Beta '91

**GINO ARTURO RATTI SOCIETY  
(\$250-\$499)**

Scott E McElroy, Alpha '87  
Harry Rossi, Alpha '43  
Robert D Corrie, Beta '53  
William J Donawick, Beta '63  
Ronald C Dunbar, Beta '57  
Victor F Janas, Beta '78  
Walter R Stillman, Beta '56  
Curtis M Walborn, Beta '76  
Paul F Hummer, Zeta '63  
Thomas R Jensen, Zeta '50  
P Duane Walker, Zeta '53  
Walter Scott Burns, Eta '98  
Andrew W Hibel, Eta '90  
Mark W Paradies, Eta '77  
Thomas M Skafidas, Eta '74  
Urban H Anslinger, Theta '48  
David W Morley, Theta '65  
Gerald L Murray, Theta '66  
Russel E Patton, Theta '51  
Garland Boothe, Iota '84  
Edward K Hoffman, Iota '68  
John G Lore, Iota '67  
Elmer E Naugle, Iota '50  
John P. Tracey, Iota '96  
Jeffrey S Whitcomb, Iota '91  
Frank E Thomas, Kappa '52  
Stephen R Branam, Nu '69  
William M. Goodwin, Nu '61  
Robert J Sinclair, Rho '54  
H Alan Vasoll, Rho '55  
Roy G Asbahr, Sigma '59  
Edward L Bowes, Alpha Alpha '63  
John J Zureck, Beta Alpha '63  
Gregory Suran, Eta Alpha '92  
John F Kiernan, Nu Alpha '83  
Mark S West, Upsilon Alpha '88  
Scott A Johnson, Phi Alpha '96  
James D Carroll, Alpha Beta '93  
Howard A Fidler, Eta Beta '92  
Michael A. Petruzzelli,  
Theta Beta '88  
Raphael E Isaac, Iota Beta '91  
Brian J Stumm, Iota Beta '92

**CENTENNIAL SOCIETY  
(\$100-\$249)**

Pamela Rutter  
R Christian Anderson, Alpha '40  
Scott H Buzby, Alpha '51  
Philip L Carpenter, Alpha '33  
John A Moser, Alpha '61  
R. Dario Quiros, Alpha '61  
David G Storrs, Alpha '81  
John G Youngman, Alpha '90  
Andrew S Bensky, Beta '82  
Frederick W Bisbee, Beta '59  
Richard C Bower, Beta '73  
Philip J Bracht, Beta '78  
Roger C Burggraf, Beta '55  
Wesley A Clark, Beta '73  
William T Cotton, Beta '58  
Robin D Dodge, Beta '80  
Jack E Frost, Beta '79  
Jack I Glassman, Beta '79  
Philip R Goodrich, Beta '63  
William J Grey, Beta '79  
Robert E Hardy, Beta '85  
Cortland P Hill, Beta '61  
Richard G Jackson, Beta '63  
Cornelius C Jones, Beta '53  
Jonathan M Kaplan, Beta '73  
Vincent J Kiernan, Beta '81  
Norbert A Lasher, Beta '39  
Dale S Lazar, Beta '74  
George O Minor, Beta '66  
David B Mitchell, Beta '58  
Douglas A Nafis, Beta '79  
Alonzo H Ross, Beta '72  
Bradford J Ross, Beta '81  
Bruce W Saunders, Beta '61  
Michael A Sopchak, Beta '72  
Robert W Terry, Beta '59  
Akira Ueno, Beta '87  
Michael E. Van Brunt, Beta '97  
Hamilton Acheson, Gamma '31  
Curtis L Pfaff, Gamma '48  
Edward M Darrow, Delta '37  
John S Goodreds, Delta '56  
Ellsworth P Johnson, Delta '44  
Samuel E Phillips, Delta '40  
Gregg R. Steamer, Delta '74  
John P Wait, Delta '54  
David K Wilkinson, Epsilon '52  
Gregory N Berkebile, Zeta '78  
George K Biemesderfer, Zeta '55  
Bernard H Carson, Zeta '55  
James P Clugston, Zeta '58  
Robert J Dankanyin, Zeta '56  
Thomas R Dolan, Zeta '55  
Louis B Gorman, Zeta '68  
Thomas J Hauser, Zeta '67  
Edward J Kikla, Zeta '60  
John Mallick, Zeta '55  
Thomas L Mentzer, Zeta '58  
John S Moeller, Zeta '38  
Sean P Myers, Zeta '90  
William L Nichol, Zeta '59  
Clayton F Ost, Zeta '55  
Bartolomeo A Pio, Zeta '70  
David W Reese, Zeta '71  
David Z Richards, Zeta '57  
Michael J Selverian, Zeta '80  
George W Simpson, Zeta '56  
Richard K Stetzer, Zeta '82  
Ronald L Stief, Zeta '53  
David N Summers, Zeta '62  
Oscar C Tissue, Zeta '51  
Albert B Wrigley, Zeta '55  
Taylor H Bell, Eta '62

Raymond A. Cramer, Eta '50  
Bruce J Gold, Eta '91  
Richard M King, Eta '34  
William F Kottas, Eta '76  
Norman G Kouba, Eta '54  
David C Lauder, Eta '71  
Joseph D Lezark, Eta '77  
Bobby G McCormick, Eta '79  
Alfred C. Mueller, Eta '96  
Arthur S Nelson, Eta '32  
Randal C Paniello, Eta '80  
Anthony R Pasquinelli, Eta '56  
Gerald L Robinson, Eta '85  
Gale L Shillington, Eta '57  
Franklin J Vernon, Eta '34  
Stanley W Woods, Eta '58  
Gary N Bowyer, Theta '69  
J Gregory Carl, Theta '80  
David A Crow, Theta '74  
V Thomas De Ville, Theta '62  
Arnold E Denton, Theta '49  
William A French, Theta '51  
Gerald P Fritzke, Theta '54  
Richard G Graves, Theta '55  
Thomas L Guthrie, Theta '62  
Stephen C Hoffman, Theta '69  
Robert L Huxtable, Theta '56  
Robert K Jolls, Theta '41  
Robert W Kropf, Theta '48  
Roger D Lapp, Theta '62  
Edwin C Leonard, Theta '62  
John E Picken, Theta '77  
John H Shafer, Theta '50  
Robert W Stalker, Theta '52  
Philip D Stinson, Theta '65  
Werner C Trifftshouser, Theta '56  
Kenneth W Wysong, Theta '29  
Scott A Alfieri, Iota '94  
George F Blades, Iota '54  
George M Craig, Iota '38  
Kevin M Kaminski, Iota '95  
James A Kellogg, Iota '62  
Stephen R Knapp, Iota '84  
Richard H Leirer, Iota '66  
William F Masler, Iota '69  
Alexander McClinchie, Iota '64  
Daniel L Packer, Iota '67  
Angelo J Pegno, Iota '53  
Richard W Reeves, Iota '81  
John D Ritter, Iota '94  
William D Schaeffer, Iota '70  
Nicholas S Vincent, Iota '92  
Gary S Lord, Kappa '74  
Donald L McDowell, Kappa '57  
Rudolph J Tekaucic, Kappa '60  
Bruce T Coggins, Lambda '43  
Vance D Lewis, Lambda '33  
William J Morgan, Lambda '62  
James F San Sebastian, Lambda '50  
Guy T Saperstein, Lambda '65  
Robert A Shortt, Lambda '83  
Alan R Talt, Lambda '51  
Robert L Boynton, Mu '37  
Byron C Coats, Mu '32  
James L Babb, Nu '62  
Edward S Beach, Nu '69  
Kenneth A Beckley, Nu '62  
William R Fox, Nu '55  
Robert B Grousd, Nu '55  
James R Hetherington, Nu '53  
Donald G Loftus, Nu '65  
Thomas M McGlasson, Nu '65  
Wayne C Ponader, Nu '53  
Jack D Shinneman, Nu '62  
Lowell L Strawser, Nu '66

Donald K Wemlinger, Nu '66  
Joseph M Woodward, Nu '70  
Robert P Higgins, Xi '77  
Arthur H Smith, Xi '57  
Thomas C Staples, Xi '78  
James H Honafius, Pi '65  
Joseph E Kelley, Pi '65  
John E Parker, Pi '68  
William C Pursch, Pi '60  
James M Anderson, Rho '63  
Leigh W Bauer, Rho '59  
Gary H Cassel, Rho '75  
David T Clark, Rho '68  
William R Dodds, Rho '74  
Thomas R Dougherty, Rho '65  
Henry Elion, Rho '54  
John A Falcone, Rho '60  
S. Scott Gates, Rho '91  
Walter B Gilmour, Rho '39  
Robert V Kiser, Rho '74  
Henry A Lee, Rho '51  
Lawrence L Livornese, Rho '81  
John K Powell, Rho '72  
Robert A Reich, Rho '51  
William C Richtmyer, Rho '42  
Curtis K Smith, Rho '67  
Harlow E Waite, Rho '57  
Gerald I Wilson, Rho '60  
David A Fulton, Sigma '78  
Harold K Meyers, Sigma '49  
Mark S Pfister, Sigma '84  
Keith F Young, Sigma '49  
George F Zimmer, Sigma '69  
Emanuel C Zografos, Sigma '50  
K. Philip M. Lychak, Tau '98  
Daniel C Pavord, Tau '87  
David M Biley, Psi '62  
James F Edgeworth, Psi '56  
E. Noel Faddis, Psi '58  
William H Gallagher, Psi '57  
Gerald A Wasson, Psi '69  
J Doyle Corman, Omega '57  
Guyton F Giannotta, Omega '72  
Jeffrey E Meek, Omega '68  
Patrick B Mikesell, Omega '62  
Timothy G Rupert, Omega '68  
James P Murphy, Alpha Alpha '59  
Frank W Harris, Beta Alpha '65  
Frank S Ioppolo, Beta Alpha '63  
David L McLuckie,  
Gamma Alpha '71  
Sean S Moran, Iota Alpha '83  
David V Trapani, Iota Alpha '84  
Patrick M Settlemire,  
Lambda Alpha '87  
John L Liu, Nu Alpha '89  
Michael J Kiernan,  
Omicron Alpha '86  
Craig A Gordon, Pi Alpha '87  
Erik A Covitz, Sigma Alpha '87  
Peter Byrne, Tau Alpha '88  
Christopher B. Miller,  
Tau Alpha '97  
Wayne R Lewandowski,  
Chi Alpha '88  
Scott M Smaniotto, Alpha Beta '93  
Joshua L Smith, Alpha Beta '93  
Richard R Sudderth, Theta Beta '89  
Ryan B. Schoenfeld,  
Lambda Beta '95  
Jonathan Hotz, Mu Beta '94  
Timothy A Schrag, Xi Beta '93  
Doron A. Semaza, Pi Beta '96  
Frank A Bart, Rho Beta '92  
Michael W. Rogers, Tau Beta '94



## GIFTS BY CHAPTER

Contributions by Chapter (Restricted and Unrestricted)

Total Number of Chapters Participating: 60

### KDR SOCIETY, ALPHA CHAPTER KDR FRATERNITY, ALPHA CHAPTER MIDDLEBURY COLLEGE \$8,310

#### 54 Contributions

Philip L. Carpenter '33  
Stanley V Peterson '34  
Gordon E Hoyt '36  
Russell A Norton '38  
Henry M Richardson '38  
William T Watt '39  
R Christian Anderson '40  
Frederick J Grab '40  
Edward J Langey '40  
Stephen H Arnold '41  
Peter N Bohn '43  
Roger L Easton '43  
Harry Rossi '43  
Jean S Hebert '44  
William D Neale '44  
Charles P Puksta '49  
Stephen J Markham '50  
Scott H Buzby '51  
Robert C Santomena '56  
John A Moser '61  
R. Dario Quiros '61  
Robert J Baskin '64  
Robert P Youngman '64  
Robert C Hall '65  
R Glen Wehrwein '68  
Michael V Brennan '71  
Peter T Stewart '71  
David D Steece '72  
Francis L Cooper '74  
John J Kalbacher '75  
Stephen A Tripp '76  
G Crossan Seybolt Jr '77  
David G Storrs '81  
Nathaniel J Rockwell '82  
James J LaFronz '85  
Gregory R Bizzozero '86  
Scott E McElroy '87  
John G Youngman '90  
Raymond B. Strong III '91  
Christine E. Waasdorp '94  
Matthew C. Hamilton '95  
Elizabeth A. Pasmantier '96  
Paul S Dome '00

### BETA CORNELL UNIVERSITY \$36,335

#### 117 Contributions

Phillip La Rocca  
Mrs. Commerford B  
Martin '33  
Millard V Cogshall '37  
Norbert A Lasher '39  
James L Rose '40  
Joseph File '44  
Robert W Neureuter '45  
Howard H Voelker '52  
Robert D Corrie '53  
Howard F Crumb '53  
Cornelius C Jones '53  
Albert H Packer '53  
Roger C Burggraf '55  
Richard E Mastin '55  
Roy P Allen '56  
John H Sachleben '56  
Walter R Stillman '56  
Ronald C Dunbar '57  
Michael A McCarthy '57

Robert W Thomas '57  
William T Cotton '58  
David B Mitchell '58  
John R Padgett '58  
Frederick W Bisbee '59  
Robert W Terry '59  
Cortland P Hill '61  
Bruce W Saunders '61  
Evan E Freund '62  
Benjamin W Woodward '62  
Randall K Cole Jr. '63  
William J Donawick '63  
Philip R Goodrich '63  
Richard G Jackson '63  
J Walter Streett '63  
George O Minor '66  
Kenneth H Downing '67  
Thomas S Loane '67  
David J Harding '72  
Dean B Livingston '72  
Alonzo H Ross III '72  
Philippe G Savary '72  
Michael A Sopchak '72  
Scott D Thyng '72  
Richard C Bower '73  
Wesley A Clark '73  
Charles H Fowler '73  
Jonathan M Kaplan '73  
Dale S Lazar '74  
Paul E Karchin '75  
Robert R Saltzman '75  
John H Humpton III '76  
William D Munch '76  
Robert Paul Ring '76  
Curtis M Walborn '76  
Stephen J Billings '77  
Carl R Franceschi '77  
Storm E Kildoye '77  
Philip J Bracht '78  
James H Gentile '78  
Gary B Holcomb '78  
Victor F Janas '78  
Jack E Frost '79  
Jack I Glassman '79  
William J Grey '79  
Larry T Harada '79  
Jay D Luft '79  
Douglas A Nafis '79  
John A Reed '79  
Robin D Dodge '80  
Richard R Gans '80  
Jonathan W Jaffe '80  
David R May '80  
Vincent J Kiernan '81  
Bradford J Ross '81  
Andrew S Bensky '82  
William M Hughes '82  
John R Hunsinger '84  
Blaise P Vitale '84  
Robert E Hardy '85  
Evan B Brody '86  
Scott A Crego '86  
Akira Ueno '87  
William S Middelaer '91  
Brian M Sagrestano '92  
Jeffrey T Anbinder '94  
Allan W Porowski '94  
Mark M Urish '94  
Patrick M. Carr '96  
Daniel LaPlaca '96  
Michael E. Van Brunt '97  
Michael J. Higley '98  
Dominick L. Schirripa '99  
Jeffrey P. Tyhach '01

### GAMMA S.U.N.Y. ALBANY \$3,208.28

#### 14 Contributions

Hamilton Acheson '31  
Robert E Goodrich '32  
Wilfred P Allard '35  
George E Decker '36  
Harold A Haynes '38  
Warren W Wagner '43  
Richard S Beach '48  
Curtis L Pfaff '48  
Donald C Hoyt '50  
Alan R Stephenson '52  
Naoshi Koriyama '54  
Richard E Wagner '54  
Paul A Downes '68

### DELTA COLGATE UNIVERSITY \$4,703

#### 45 Contributions

Robert B Ainslie '33  
Edward M Darrow '37  
Edward H Dickson '40  
Clyde H Mulhern '40  
Samuel E Phillips Jr. '40  
Lawrence F Barr '42  
Donald E Colburn '42  
Jack F Sinn '43  
Paul B Thompson '43  
Ellsworth P Johnson '44  
Kenneth B Tate '45  
Robert G Schreiber '49  
Howard E. Sutliff '50  
Richard L Naeye '51  
David A Reynolds '51  
James C Tomasi '51  
Joseph L Benero '52  
Nicholas A Orsini '52  
Seymour L Ellison '53  
John P Wait '54  
John S Goodreds '56  
H Paul Mosher '56  
Scott H Werner '59  
J. David Gaines '61  
Ronald J Taylor '63  
William M Thompson '65  
Stanley W Chapman '68  
Alan S Anderson '70  
Robert L Glendening '71  
Gregg R. Steamer '74  
David R Hoelzer '75  
George A King '81  
N. John Torres '85  
Rufus P. Collea '89  
Jack H Ehretzman '92  
Kevin M Weinstein '93  
Steven N. Violin '00  
Rodolfo D. Salas '01

### EPSILON FRANKLIN COLLEGE \$22,403.60

#### 29 Contributions

S Carlisle Botts '30  
Myron C Knauff '41  
Albert W Porter '41  
John L Duncan '43  
Robert F Volland '43  
Robert E Addington '46  
H George Hamacher '48  
Frank K Martin '52  
Henry F Steinkamp '52  
David K Wilkinson '52  
Phillip B Nason '53  
James D Kowalski '57  
Marvin Paul Manteuffel '63  
Richard F Ennis '64  
Jon C Geuder '64

Gordon A Bardos '65  
John B Hachman '67  
David R Coffin '68  
William J Deubel '70  
David E Overmyer '70  
Noel A Thomas Jr. '70  
Michael F Petti '71  
James B Davidson '72  
William N Espy '72  
D Kirt Verhagen '82  
Craig S Lawson '90  
Paul D. Whitbeck '00

### ZETA PENN STATE UNIVERSITY \$19,156.16

#### 98 Contributions

Edward T Kitchen '33  
John S Moeller '38  
Anson C Burwell Jr. '42  
Elmer W Fry '45  
Warren L Davies '46  
William A Vernon '48  
Daniel E Winslow Jr. '48  
Thomas R Jensen '50  
Robert J Merryman '51  
Harry B Rhoades Jr. '51  
George W Riggs '51  
Oscar C Tissue Jr. '51  
Robert E Miller '52  
Vincent I Purcell '52  
Earl H Grissinger '53  
William P Stackhouse Jr. '53  
Ronald L Stief '53  
P Duane Walker '53  
Allan J Ofensend '54  
Paul D Sheaffer '54  
George K Biemesderfer '55  
James H Buterbaugh '55  
Bernard H Carson '55  
Thomas R Dolan '55  
John L Hershey Jr. '55  
John Mallick '55  
Clayton F Ost '55  
Robert G Thomas '55  
Albert B Wrigley '55  
Robert J Dankanyin '56  
Richard A Roschli '56  
George W Simpson '56  
Ray A Alberigi '57  
David R Hamrick '57  
Donald P Phillips '57  
David Z Richards '57  
James P Clugston '58  
Thomas L Mentzer '58  
Patrick J Rielly '58  
Gregory M Huntingdon '59  
James A Morgart '59  
William L Nichol '59  
Dennis P Bowen '60  
Edward J Kikla '60  
R Marshall Phillips '60  
David N Summers III '62  
Paul F Hummer II '63  
Vernon A Long '65  
James A Wellendorf '65  
William H Albinson '66  
Robert J Gill '66  
Thomas J Hauser '67  
Louis B Gorman '68  
Scott A Bailey '69  
Bartolomeo A Pio '70  
David W Reese '71  
Wesley L Litzinger '73  
Spencer E Boyer '76  
Gerald D Toland '77  
Gregory N Berkebile '78  
Michael S Cover '78  
Jay P Edmunds '79

Norbert L Butkus '80  
Michael J Selverian '80  
David A Burdette '81  
Richard K Stetzer '82  
Nels C Bergstrom '83  
Matthew D Glass '83  
Steven C Kelly '84  
Sean P Myers '90  
Thomas J. Del Rossi '00  
Michael J. Ferraro '00  
Michael A. Orehowsky '00

### ETA UNIVERSITY OF ILLINOIS \$12,071.50

#### 79 Contributions

Lorin D Whittaker '28  
Knud A Larsen III '30  
Howard F Brown '31  
Arthur S Nelson '32  
Richard M King '34  
Franklin J Vernon '34  
William W Locke '38  
Robert A Frech '49  
James R Whitfield '49  
Raymond A. Cramer Jr. '50  
Richard A Naatz '50  
Paul C Sisco '50  
William H Holden Jr. '54  
Norman G Kousa '54  
Anthony R Pasquinelli '56  
Norbert J Sargent '57  
Gale L Shillington '57  
Stanley W Woods Jr. '58  
Taylor H Bell '62  
Gary L Post '62  
John E Henry '64  
Lawrence D Muller '64  
John David Reed '64  
Douglas L Garwood '66  
Arthur D Hallstrom '68  
Timothy F Moore '68  
Robert M Bordeaux '69  
Roderick H Schutt '69  
David C Lauder '71  
Kenneth J Krynicki '73  
David L Rathgeb '73  
Thomas M Skafidas '74  
Mark S Dills '76  
William F Kottas '76  
Joseph D Lezak '77  
Brian D Noel '77  
Mark W Paradise '77  
Douglas K Jackson '78  
Perry A Johnson '78  
Mark R Townsend '78  
Stephen A Lawrence '79  
Bobby G McCormick '79  
Randal C Paniello '80  
William P Zorc '80  
William J Armbruster '84  
Gregory A Lynn '84  
Gerald L Robinson '85  
Michael S Cunningham '86  
William J Paris '87  
John E Oberhill '88  
Andrew W Hibbel '90  
Patrick J Murphy Jr. '90  
Bruce J Gold '91  
Michael E. Mueller '95  
Keith R. Meister '96  
Alfred C. Mueller '96  
Walter Scott Burns '98  
Brent T. Koike '99

### THETA PURDUE UNIVERSITY \$28,519.31

#### 93 Contributions

Kenneth W Wysong '29  
John H Matthews '35  
George E Dennis '36  
C Dwayne Sloan '37  
James B Kirkpatrick '38  
William L Molyneux '38  
John E Kanally '40  
Robert K Jolls '41  
George J Peer '45  
Ernest J Fischer '46  
Cecil E Evans '47  
Urban H Anslinger '48  
Robert W Kropf '48  
Arnold E Denton '49  
John R Gray '49  
Peter W Strong '49  
Roger W Walker '49  
John H Shafer '50  
John C Carl '51  
William A French '51  
Russell E Patton '51  
Roland J Peterson '51  
Robert W Stalker '52  
Gerald P Fritzke '54  
Andrew W Smithberger '54  
Richard G Graves '55  
John D Winters Jr. '55  
Calvin G Conrad '56  
Charles P Hendricks '56  
Robert L Huxtable '56  
William D Lamb '56  
Werner C Trifftshouser '56  
Gerald A Swedeen '58  
Edward R Williams '58  
William C Benton '59  
H Louis Gurthel '60  
Thomas J Shideler '60  
John Doddridge '61  
John M Geshkewich '61  
Tony J Schmeltz '61  
V Thomas De Ville '62  
Thomas L Guthrie '62  
Daniel R Johnson '62  
Roger D Lapp '62  
Edwin C Leonard '62  
Fred O Cook '63  
V Richard Miller '63  
Dennis M Ring '63  
Richard D Keller '65  
David W Morley '65  
James W Prech '65  
William J Rippe '65  
Philip D Stinson '65  
William R Stover '65  
Kenneth J Caldwell '66  
Gerald L Murray '66  
Richard L Seibel '66  
Gary N Bowyer '69  
Stephen C Hoffman '69  
Philip W Steinfeldt '71  
David A Crow '74  
Douglas C Edwards '76  
Perry A Patton '76  
John E Picken '77  
T Terry Tousey '77  
William L Coorsh '78  
J Gregory Carl '80  
Christopher Destry '82  
John D Hylkema '82  
Daniel B Johnson '82  
Stephen D Arvin '85  
Jeffrey E Ross '89  
Jeffrey W Tucker '90  
Alan M Hatch '92  
Brian T. Houston '96  
Bimal N. Saraiya '00



**IOITA**  
**BUCKNELL UNIVERSITY**  
**\$21,109**

**171 Contributions**  
John L Bergen '35  
George M Craig '38  
John C Nixon '40  
Brian M Sword '48  
Sherman A Herman '49  
Roy P Jackman '49  
William W Bell Jr. '50  
Elmer E Naugle '50  
Angelo J Pegno '53  
George F Blades '54  
Lee H Idelman '54  
John M I Hoffmann '56  
Ted Kullen '57  
Robert H Raymond Jr '60  
Robert C Hardy '61  
Kenneth W Lackie '61  
James A Kellogg '62  
Michael S Davis '64  
David E Hill '64  
Alexander McClinch III '64  
John R Hogan '65  
Richard H Trefflich '65  
Richard H Leirer '66  
John G Lore '67  
Robert D Lynd '67  
Daniel L Packer '67  
Herbert T Fitch '68  
Edward K Hoffman Jr. '68  
Richard C Reeve '68  
William F Masler III '69  
Elliot Zulver '69  
William D Schaeffer Jr. '70  
Thomas R Spitzer '70  
Mark C Gebhardt '71  
D. Bruce McClenathan '71  
Hugh A Mose '71  
Bruce S Cooper '72  
William W Werther '74  
William E Whitney '74  
Charles W Berger '75  
Mark B E Stephanou '75  
Eugene L Spencer '76  
Gary J Buchmann '79  
Edward W Dadez '80  
David C Welber '80  
Richard W Reeves '81  
Keith F Rozolis '81  
John F Whitaker '81  
Garland Boothe III '84  
Stephen R Knapp '84  
Richard C Bean Jr. '88  
John K Musgrave IV '88  
Charles D Collier '91  
Gregory B  
Kuppenheimer '91  
James S Quigley '91  
Jeffrey S Whitcomb '91  
Samuel S Brubaker '92  
Kenneth R Coulter Jr. '92  
Douglas H Frazier '92  
Daryl S Hodgkinson '92  
Matthew W Leiphart '92  
Gregory J Schmitt '92  
Nicholas S Vincent '92  
David K Granson '93  
John V Melick '93  
Scott A Alfieri '94  
Robert A Bavar '94  
Michael T Brown '94  
Jeffrey L Bush '94  
Scott L Chesky '94  
Alexander Kogan '94  
John D Ritter II '94  
Scott L Russo '94  
Stephen A Smith '94

Kevin B Streeper '94  
Michael D Thomas '94  
Oliver W Horst '95  
Kevin M Kaminski '95  
Owen R Michaelis '95  
D Kyle Morris '95  
Mark S Pyle '95  
Anthony M. Carpenito '96  
Colin E. Kane '96  
David D. Phillips '96  
Todd H. Squire '96  
John P. Tracey '96  
Michael L. Ashton '97  
Luis Felipe Carvajal '97  
Trevor V. Mikus '97  
Scott W. Sullivan '97  
Andrew M. Thimme '97  
Ian P. Fitzgerald '98  
Joseph I. Marchese '98  
Sean G. Huss '99  
Brian J. Mazzei '99  
Peter A. Kadens '00

**KAPPA**  
**OHIO STATE UNIVERSITY**  
**\$2,653**

**26 Contributions**  
Allen L Shumard '30  
Earl F Williams '32  
Paul L Weller '35  
Donald L Paris '39  
Vaughn Herbel '49  
Mike Koval '51  
Robert V Rittenhouse '51  
Jack E Dennison '52  
Dean T Sangalis '52  
Frank E Thomas '52  
Donald L McDowell '57  
Edward M Helal '59  
Rudolph J Tekaucic '60  
Hans A Schokatz '66  
William G Buchholz '68  
J Richard Barth '69  
David W Magill '70  
William W Weber '73  
Charles J DeVirgilio '74  
Gary S Lord '74  
Keith Stahl '74  
Paul A Parks '75  
Stephen E Sinkey '76

**LAMBDA**  
**UNIVERSITY OF**  
**CALIFORNIA, BERKELEY**  
**\$7,234**

**45 Contributions**  
John G Smale '24  
Gordon G Johnson '26 (dec)  
John A Reshoft '30  
William W Alving '33  
Harold P Knopp '33  
Vance D Lewis '33  
James W Moon '35  
Cyril B Haworth '37  
Theodore R Thompson '37  
Robert H McPhillamey '39  
William C Cameron '41  
Bruce T Coggins '43  
Hugh F Ewing '49  
James F San Sebastian '50  
Ronald W Hendrickson '51  
Alan R Tait '51  
Donald L Edgar, JD '52  
Robert L Rose '52  
Allen R Whitsitt '52  
Arthur F Kirby '54  
Robert D Behler '55  
Norbert C Babin '56  
Donald D Roberts '58  
James G Huseby '60

Paul D Griem Jr. '61  
Douglas L MacLachlan '62  
William J Morgan '62  
Robert A Goings Jr. '63  
B Kent Wood '63  
Douglas J Bell '64  
Asa Y Meudell III '65  
Guy T Saperstein '65  
Brann Johnson '68  
David J Bonelli '77  
John P Fernbacher '79  
David A Herring '79  
Robert A Shortt '83  
Brennan A Scott '92  
Brian M. Lewis '99  
Leonard J Lepera '00

**MU**  
**UNIVERSITY OF**  
**MICHIGAN**  
**\$10,373**

**7 Contributions**  
Hubert W Gouldthorpe '27  
Byron C Coats '32  
Robert L Boynton '37  
Roland Savilla '40  
Richard D. Boynton '42

**NU**  
**INDIANA UNIVERSITY**  
**\$35,356.76**

**81 Contributions**  
Evan H Lewis '34  
George T Orfanos '44  
Stephen C Chaleff '48  
Robert P Heinz '48  
James D McConnell '49  
J Robert Alter '50  
Godfrey P Klacik '50  
Robert B Purdy '50  
Robert C Reising '51  
James R Hetherington '53  
Wayne C Ponader '53  
William R Fox '55  
Robert B Grousd '55  
Allen W Koehlinger '55  
Thomas C Lockwood '56  
Larry S Wood '56  
Thomas E Brethauer '57  
Emery E Coon Jr. '58  
Richard S Wilson '58  
James E Hertling '59  
Thomas V McComb '59  
Ronald L Reinking '59  
James D Clements '60  
Weldon H Leimer '60  
James R Gambrell '61  
William M. Goodwin '61  
Delano L Newkirk '61  
James L Babb Jr. '62  
Kenneth A Beckley '62  
Charles E Filippo '62  
Jack D Shinneman '62  
Richard O Jones '64  
James H Ramsey '64  
Charles D Vonesh '64  
David R Zaun '64  
William P Butz '65  
Donald G Loftus '65  
Thomas M McGlasson '65  
Gerald A Frette '66  
Donald H Miller '66  
David L Pollert '66  
Lowell L Strawser '66  
Donald K Wemlinger '66  
Norman H Babcock '67  
George E Cannon '67  
Richard L Edrington '68  
Lawrence E. Shearer '68  
James W Sherby '68

Craig S Thomson '68  
Edward S Beach '69  
Stephen R Branam '69  
Brandt L Ludlow '69  
Randel E Trebing Jr. '69  
Gary W Wilson '69  
Stephen L Ernest '70  
Mark N Lundgren '70  
Joseph M Woodward '70  
Edwin D Miller '72  
Douglas E Otto '72  
Brian K Houlihan '76  
Kevin C Palmer '85  
James T C Talbott '88  
James A Mayes '90  
George E Kirk '00

**XI**  
**COLBY COLLEGE**  
**\$694**

**20 Contributions**  
Harold F Lemoine '32  
Gardner Oakes '40  
George H Conley '44  
Richard D Goodridge '44  
M Cass Lightner '51  
Schuyler L Mott '51  
Maurice F Ronayne '51  
Robert A Cooke '53  
Abbott E Rice '54  
Arthur H Smith '57  
John M Whittier '60  
William Agrella '71  
Robert P Higgins '77  
Thomas C Staples '78  
Louis R Piscatelli '82

**PI**  
**GETTYSBURG COLLEGE**  
**\$2,215**

**30 Contributions**  
Charles F Anderson '33  
Robert L Cook '41  
Robert L Klinedinst '47  
Alvin C Sheetz Jr. '50  
Charles G Cavey Jr. '53  
Richard W Garman '53  
Richard E Lippert '53  
James M Henderson Jr. '55  
J Norman Miller Jr. '55  
Jaye R Ryan '55  
James W Ayre '56  
Robert H Boyer '60  
Jon P Pensyl '60  
William C Pursch '60  
Edmund M Schneider '60  
Herbert W Hirning '61  
G David Deardorff '63  
James H Honafius '65  
Joseph E Kelley III '65  
Vincent Majkowski '65  
John R Nagle '65  
Allen S Gabroy '67  
William R Deisinger '68  
John E Parker II '68  
William Stillgebauer '68  
Brian J Blood '70  
Daniel S Bishop '71  
Ivan J Punchatz '71

**RHO**  
**LAFAYETTE COLLEGE**  
**\$15,437.19**

**102 Contributions**  
Murray G Clay '30  
Harold J Corwin '35  
Roland Raver '35  
Roy H Stetler Jr. '36  
John R Probert '37  
Robert H B Wade '37

Walter B Gilmour '39  
John A Snyder Jr. '41  
Robert B Howard '42  
William C Richtmyer '42  
Harvey H Hunerberg '48  
Walter Hartl '49  
John K McDonald '49  
Cornelius J Bruinooge '51  
Henry A Lee '51  
Robert A Reich '51  
Harrison F Wood '51  
Thomas L Jamison '52  
Edward O Woolridge '52  
Ray C Hunt Jr. '53  
Robert B Thompson III '53  
Henry Elion '54  
Joseph F Koegler '54  
Daniel H Krombolz '54  
Robert J Sinclair '54  
H Alan Vasoll '55  
Donald P Ewald '56  
William P Freese II '56  
Harlow E Waite '57  
Donald Muyskens '58  
Leigh W Bauer '59  
Gary J Ford '59  
Arthur Kontura '59  
Donald S Straub '59  
John A Falcone '60  
Gerald I Wilson '60  
David K Bilheimer '61  
Richard D Kline '61  
Edward B Curtis '62  
Charles R Solomon '62  
James M Anderson '63  
James W Marlatt '63  
Thomas R Dougherty '65  
James H Riefenstahl '65  
James L Terhune '65  
Henry B Brooks '67  
Curtis K Smith II '67  
Mark A Staples '67  
Jeffrey P Weaver '67  
David T Clark '68  
Robert M Rader '68  
David R Hughes Esq '69  
Charles E. Peterson III '69  
Stephen P Otway '70  
Mark R Whitley '70  
Bruce E Kleinert '71  
John K Powell Jr. '72  
William R Dadds Jr. '74  
Robert V Kiser '74  
Gary H Cassel '75  
David P Hourigan '75  
Richard J Gant '76  
James A Coccagna '77  
Howard A Rubin '77  
Lucky H G Yapple '78  
Mark W DeWalt '79  
Eugene B Kelsey '79  
Gregory B Smith '80  
George F Gehrig '81  
Lawrence R Kulig '81  
Lawrence L Livornese '81  
Mark G Moffatt '84  
Charles J Gatt Jr. '85  
Michael J Groman '86  
George R Lyles III '86  
Thomas A Dempsey '87  
Peter T Holran '87  
Jeffrey S Boxer '89  
Jeffrey A Nelson '89  
Leonard J Ostroff '89  
Douglas S Brown '91  
S. Scott Gates '91  
Marc J Gallagher '93  
Justin B Wineburgh '94  
Ronald G. Clark Jr. '97

Seth M. Marlatt '98  
Lachlan W. McLean '98  
Daniel B. Linker '99

**SIGMA**  
**OREGON STATE**  
**UNIVERSITY**  
**\$10,620**

**48 Contributions**  
Loran L Stewart '32  
Robert E Blasen '33  
Everett W. Holstrom '39  
George D Drury '42  
Lyle T Lindsay '47  
Harold K Meyers '49  
Keith F Young '49  
John R. McClure '50  
George R McCormick '50  
Emanuel C Zografos '50  
William C Molier '52  
Vern L Yaden '52  
Jack Foster '55  
Edwin K Robinson '55  
Gerald W Harte '58  
Robert E Loud '58  
Robert L Swinney '58  
Roy G Asbahr '59  
Howard A McClellan '64  
George F Zimmer '69  
Myron C Andrew '71  
John L Robbins '72  
David A Fulton Jr '78  
Kenneth E Moulton '79  
Randal S Saunders '79  
Mark S Pfister '84  
Joel G Ronning '85  
Russell S Weaver '88  
Matthew W Loutzenhiser '91  
Travis J Trupp '91

**TAU**  
**CARNEGIE MELLON**  
**UNIVERSITY**  
**\$432**

**10 Contributions**  
Paul H Ditzler '36  
Earle D Moiles '37  
James C Reynolds '37  
Daniel C Pavord '87  
Neil F Efrom '92  
William G Lee Jr. '92  
K. Philip M. Lychak '98  
Michael L. Doherty '00

**UPSILON**  
**FRESNO STATE**  
**UNIVERSITY**  
**\$50**

**3 Contributions**  
Robert A Forsblad '41  
Jack E Peebles '44  
Robert A Holm '52

**PHI**  
**UNIVERSITY OF OKLA-**  
**HOMA**  
**\$125**

**3 Contributions**  
Thomas G Robinson '51  
Earl W Dittman '53  
Ernest Z Anderson '54

**PSI**  
**LYCOMING COLLEGE**  
**\$2,344**

**26 Contributions**  
James F Edgeworth Sr. '56  
William H Gallagher '57  
C Alan Stephan '57  
E. Noel Faddis '58  
David A Himes '58



Jay H McCormick '60  
Richard L Raudabaugh '60  
Robert C Wilson '61  
David M Bliley '62  
Luke H Kauffman '62  
Fred T Feigley '64  
Larry A Armour '65  
Christopher Christie '65  
James C Hubbard '66  
Richard G Houck '67  
C Walter Kinsey Jr. '67  
Wade W Pugh '67  
Carl E Elser '68  
Richard H Sherwood '69  
Gerald A Wasson Jr. '69  
Edward J Genter III '71  
David W Vilushis '79  
William H Frasse '83  
George A Umstead '84  
Corey T. Hnat '95

**OMEGA  
INDIANA UNIVERSITY  
OF PENNSYLVANIA**  
\$3,223

26 Contributions  
J Doyle Corman Jr. '57  
John D Varner '57  
J Kent Roach '60  
Charles Szvitch '61  
Stephen P Wareham '61  
Patrick B Mikesell '62  
Ronald Woolf '63  
Harvey M Weitzel '64  
Stephen J Steranchak '65  
Thomas E Love '66  
Jeffrey E Meek '68  
Timothy G Rupert '68  
George H Rutter Jr. '68  
John D Robinson '70  
James E Perry '71  
Robert L Gett '72  
Guyton F Giannotta '72  
Kenneth J Hue '72  
John M Sakolian '73  
James E Lore '76  
David M McDonald '78  
Joseph D Mucci '80  
James J Gattuso Jr. '81  
Keith A Graham '92

**ALPHA ALPHA  
LOCK HAVEN  
UNIVERSITY**  
\$1,037

19 Contributions  
Stephen B Morley '58  
Frank D Geno '59  
James P Murphy '59  
Kenneth C Fogleman '61  
Gene E Rexford '62  
Edward L Bowes '63  
Dale T Sphar '63  
Lewis F Frain '64  
Donald W Wagner '66  
Gregory W Kitchen '71  
Craig A Clark '73  
Daniel E Cruttenden '73  
John J Jarocki '75  
George A Wilhelm '75  
Joseph Di Donato Jr. '77  
Richard T Fultz '89  
Michael L Peters '91  
Seth A Fronk '95  
Brad M. Shirey '98

**BETA ALPHA  
C.W. POST COLLEGE**  
\$695

6 Contributions  
Peter B Spangler '61  
Frank S Ioppolo Sr. '63  
John J Zureck '63  
Frank W Harris '65  
Richard T Hennessy '65

**GAMMA ALPHA  
BRADLEY UNIVERSITY**  
\$3,964.07

6 Contributions  
Steven Schilson '65  
David L McLuckie '71  
Gregory A Wiczorek '73  
Francis C Furman '77  
Robert S McGann '77

**EPSILON ALPHA  
LEWIS UNIVERSITY**  
\$30

1 Contribution  
Randall H Fleck '75

**ETA ALPHA  
ROBERT MORRIS  
COLLEGE**  
\$400

8 Contributions  
Luke M Jacobs '87  
Robert W Cooper '88  
Eugene A Susi Jr. '90  
Gary J Norris '92  
Gregory Suran '92  
Steven M Scanlon '94  
Ronald R Ramer Jr. '95

**THETA ALPHA  
SLIPPERY ROCK  
UNIVERSITY**  
\$75

2 Contributions  
Jeffrey F Mullaly '85  
Matthew A Heromin '92

**IOTA ALPHA  
UNIVERSITY OF  
PITTSBURGH  
AT JOHNSTOWN**  
\$363.50

5 Contributions  
Sean S Moran '83  
Allan C Lydic '84  
David G Smith '84  
David V Trapani '84

**KAPPA ALPHA  
ILLINOIS STATE  
UNIVERSITY**  
\$50

1 Contribution  
Kenneth A Singer '85

**LAMBDA ALPHA  
GANNON UNIVERSITY**  
\$683

14 Contributions  
Ronald T Kubeja '84  
Patrick M Settlemire '87  
Richard M Andre '91  
Jason S. Salegna '97  
Christian B. Owen '98

**MU ALPHA  
WEST VIRGINIA  
UNIVERSITY**  
\$90

3 Contributions  
Louis R Spina '82  
Scott A Hudimac '85  
Dwayne E Porter '85

**NU ALPHA  
COLUMBIA UNIVERSITY**  
\$20,675

10 Contributions  
Andrew F Barth '83  
John F Kiernan '83  
Everton L Lopez '84  
Howard I Hoffman '85  
Joseph J Adipietro '87  
Roger G Bowers '88  
John L Liu '89  
Roderick B. Covlin '96  
David S. Roy '97

**XI ALPHA  
TEMPLE UNIVERSITY**  
\$35

1 Contribution  
Neil D Larrimore '92

**OMICRON ALPHA  
RUTGERS UNIVERSITY**  
\$813.25

6 Contributions  
Michael J Kiernan '86  
David K Bernstein '88  
Alan A Dolnick '89  
Dana F Rubin '89  
Todd A Auerbach '92  
Ernest M Reyes '92

**PI ALPHA  
UNIVERSITY OF TOLEDO**  
\$1,435

11 Contributions  
Eric D Barbe '87  
Craig A Gordon '87  
Michael A Meffie III '87  
Brian K Bachtel '88  
Brian K Gorby '89  
Thomas O McGannon '90  
Douglas M Rammel '90  
Anbu Lingappan '92  
Thomas B Delac Jr. '94  
Dave J. Oros '96

**SIGMA ALPHA  
HOFSTRA UNIVERSITY**  
\$200

1 Contribution  
Erik A Covitz '87

**TAU ALPHA  
RADFORD UNIVERSITY**  
\$4,878

13 Contributions  
Christopher M Brennan '88  
Peter Byrne '88  
Shawn E Davis '88  
Derek C Parsons '92  
Christopher B. Miller '97  
Douglas M. Miller H

**UPSILON ALPHA  
ST. LOUIS UNIVERSITY**  
\$1,970.54

23 Contributions  
Mike F Kazzie '86  
David P Koellner '86  
Ralph A De Palma Jr. '87  
Daniel E Mashburn '87  
Mark S West '88

Bryan P Birchem '89  
Edward T Stack III '89  
Patrick E Keyes '90  
Jeffery J Caron '92  
Earl W Stolz II '92  
Michael R Helbig '93

**PHI ALPHA  
CLARION UNIVERSITY**  
\$529

7 Contributions  
Mark A Twerdok '87  
Ryan H Loberg '88  
Dirk W Johnson '92  
Scott A Johnson '96  
Peter J Talento '97  
Shawn M Hoke '95

**CHI ALPHA  
UNIVERSITY OF  
PITTSBURGH  
AT GREENSBURG**  
\$285

4 Contributions  
Ronald M. DeGuffroy '88  
Wayne R Lewandowski '88  
Donald A Ravasio '88

**PSI ALPHA  
BEHREND COLLEGE**  
\$50

1 Contribution  
David D. Cardone '98

**ALPHA BETA  
UNIVERSITY OF  
DELAWARE**  
\$636.85

7 Contributions  
Christopher T  
Kauffman '88  
Thomas R Masino Jr. '91  
James D Carroll '93  
Scott M Smaniotto '93  
Joshua L Smith '93  
Craig A. Frederick '98  
Robert M. Roche '99

**BETA BETA  
BALL STATE UNIVERSITY**  
\$95

3 Contributions  
James D. Jones '95  
Michael R Morris '95  
Michael W. Wilkins '97

**EPSILON BETA  
OLD DOMINION  
UNIVERSITY**  
\$295

5 Contributions  
Mark N Sandler '89  
Robert D Garrett II '91  
James D Mowry '91  
Jerry L Hudson Jr. '92  
Raymond H  
Springsteen '92

**ZETA BETA  
TARLETON STATE  
UNIVERSITY**  
\$718

8 Contributions  
John F Hughes '89  
Lowell Duncan Parrish '93  
Christopher K Gordon '95  
Jason T. Lovell '98  
Joshua L. Talbert '98  
John D. Lee '00  
Eric J. Duff '01  
Barclay D. Jenkins '01

**ETA BETA  
WEST CHESTER  
UNIVERSITY**  
\$485

6 Contributions  
Howard A Fidler '92  
Boyd A Miller '92  
Amar Kosaraju '94  
Brian L. Grove '95  
Mark R Pagano '98

**THETA BETA  
NEW YORK INSTITUTE  
OF TECHNOLOGY**  
\$422.50

5 Contributions  
Michael A. Petruzzelli '88  
Richard R Sudderth '89  
Robert A Magnotti '92  
Brian Thomas '92  
Stuart R Johnson '93

**IOTA BETA  
ROCHESTER INSTITUTE  
OF TECHNOLOGY**  
\$1,335

10 Contributions  
James M Donahue '91  
Raphael E Isaac '91  
Steven C Rapids '91  
Mark Nowakowski '92  
Brian J Stumm '92  
Alok K Kapoor '93  
Giacoma La Fata Jr. '93  
Peter C Stoffel '94  
John M. Kropf '97  
Michael T. Jesse '96

**LAMBDA BETA  
JAMES MADISON  
UNIVERSITY**  
\$1,416.30

9 Contributions  
J. Hall Jones '91  
Richard L McCoy Jr. '92  
Steven T. Barham '94  
Ryan B. Schoenfeld '95

**MU BETA  
SYRACUSE UNIVERSITY**  
\$288

6 Contributions  
Jason S Montague '92  
Christopher B  
Kaczmarek '93  
Jonathan Hotz '94  
Alan M Gutman '95  
David M Orens '95  
David J. Matson '96

**XI BETA  
UNIVERSITY OF  
PITTSBURGH**  
\$130

2 Contributions  
Timothy A Schrag '93

**OMICRON BETA  
WILLIAM PATTERSON  
COLLEGE**  
\$74

3 Contributions  
Fabio Adduci '93  
Paul J. Sartori '93  
Jon D. Rubinstein '98

**PI BETA  
STOCKTON STATE  
COLLEGE**  
\$155

2 Contributions  
Jason A Gross CPA '93  
Doron A. Semaza '96

**RHO BETA  
EASTERN ILLINOIS  
UNIVERSITY**  
\$100

1 Contribution  
Frank A Bart '92

**SIGMA BETA  
UNIVERSITY OF  
NORTH CAROLINA  
AT GREENSBORO**  
\$85

2 Contributions  
Hakim A Srour '94  
Shawn M. Payne '00

**TAU BETA  
EASTERN TENNESSEE  
STATE UNIVERSITY**  
\$170

2 Contributions  
Michael W. Rogers '94  
David B. Smith '94

**UPSILON BETA  
CLEMSON UNIVERSITY**  
\$90

3 Contributions  
David S. Lutz '97  
Donnie W. Plyler Jr. '99

**PHI BETA  
COLLEGE OF WILLIAM  
AND MARY**  
\$100

3 Contributions  
Scott A. Hall '94  
Michael B. Leynor '95  
Darren S. Tucker '95

**OMEGA BETA  
UNIVERSITY OF  
NORTH CAROLINA  
AT ASHEVILLE**  
\$35

1 Contribution  
Jay Johnson '00



# DAY 3 — SATURDAY

## 9 a.m. - 12 p.m. - National Convention Meeting

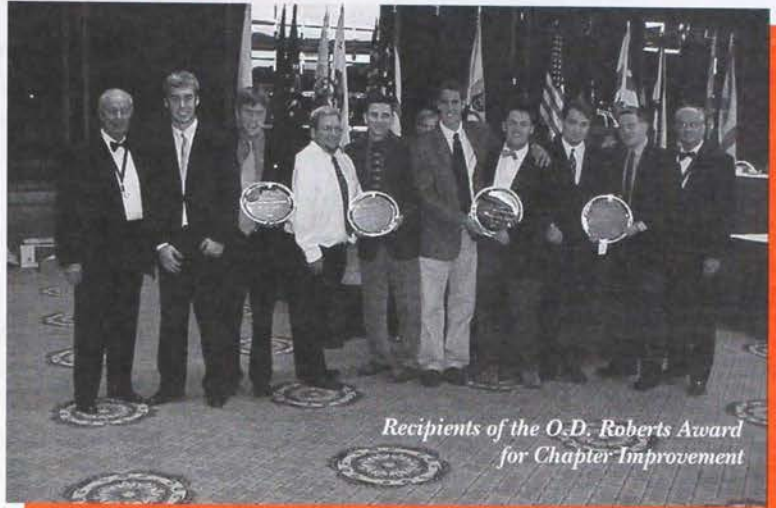
The legislative meeting for the National Fraternity was held in the morning.

## 12 noon - 1:30 p.m. - New Member Registration luncheon

Chris Miller, Sue Balash and Tracey Jordan (isignup-now.com) presented the new fully automated online member registration and payment system.

## 1:30 - 5 p.m. - Career Forum

Jon Lay from the national office and a team of specialized volunteers led a series of panel discussions to help undergraduates with career networking. Each panelist discussed his employment and related areas. Members of the discussion panel, fraternity directors and foundation trustees prepared individual resumé critiques for the undergraduates.



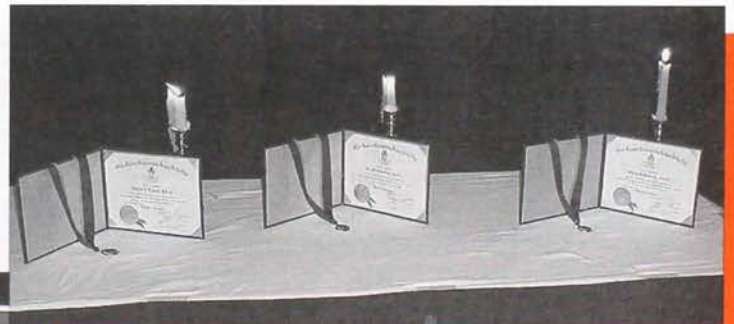
*Recipients of the O.D. Roberts Award for Chapter Improvement*

## 6 p.m. - Convention Group Photo



## 7 p.m. - Ordo Honoris, Scholarship and Chapter Awards Dinner

43 awards were given out to recognize success in chapter operations and programming. More than \$32,000 in scholarships was announced and Paul Downes and Bill Paris were recognized for their years of service to the Foundation and recent retirements. Steve Rapids, Iota Beta '91, served as the evening's keynote. Three brothers were inducted into Ordo Honoris: Brother Charles R. Hughes, Rho '67; Gary L. Nalbandian, Zeta '64; and William A. Siverling, Zeta '63.



*Ordo Honoris Awards*



*Alpha Gamma brothers receiving the Grand Consul Award for best chapter.*



## Chapter Awards

### *Grand Consul - Outstanding Chapter*

Alpha Gamma -

University of Detroit Mercy

### *O.D. Roberts - Chapter Improvement*

Alpha Society -

Middlebury College

Nu - Indiana University

Sigma Beta - UNC Greensboro

Phi Beta - The College of

William and Mary

### *Executive Director's Award -*

#### *Recruitment*

Alpha Society -

Middlebury College

Iota - Bucknell University

Delta - Colgate University

Sigma Beta - UNC Greensboro

Zeta Beta -

Tarleton State University

Alpha Gamma -

University of Detroit Mercy

### *National Staff Award -*

#### *Risk Management*

Iota Beta -

Rochester Institute of Technology

### *William I. Myers -*

#### *Best Chapter Scholarship*

Alpha Gamma -

University of Detroit Mercy

# Chapter Awards . .

### *Donald C. Wolfe - Newsletter*

1st Place - Alpha Gamma -

University of Detroit Mercy

2nd Place - Nu -

Indiana University

3rd Place - Lambda Beta -

James Madison University

### *George E. Kimball - Social Service*

1st Place - Alpha Alpha -

Lock Haven University

2nd Place - Alpha Gamma -

University of Detroit Mercy

3rd Place - Zeta Beta -

Tarleton State University

### *John L. Blakely - Philanthropy*

1st Place - Zeta -

Pennsylvania State University

2nd Place - Alpha Gamma -

University of Detroit Mercy

3rd Place - Eta Alpha -

Robert Morris College

### *Leo T. Wolford - Campus Involvement*

1st Place - Alpha Gamma -

University of Detroit Mercy

2nd Place - Alpha Society -

Middlebury College

3rd Place - Alpha Beta -

University of Delaware

### *Gino A. Ratti - Alumni Relations*

1st Place - Alpha Beta -

University of Delaware

2nd Place - Zeta Beta -

Tarleton State University

3rd Place - Nu -

Indiana University

### *Dr. Harold Osborn -*

#### *Intramural Sports*

1st Place - Eta Beta -

Westchester University

2nd Place - Zeta Beta -

Tarleton State University

3rd Place - Eta Alpha -

Robert Morris College

### *George E. Shaw - Public Relations*

1st Place - Nu - Indiana University

2nd Place - Alpha Alpha -

Lock Haven University

3rd Place - Phi Beta - The College

of William and Mary

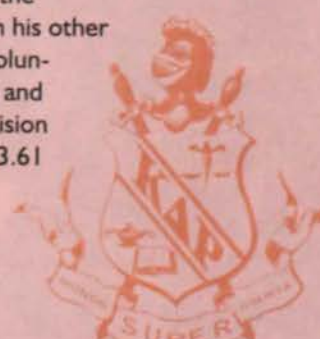
## OUTSTANDING SENIOR BIMAL SARAIYA, THETA '00

Throughout his undergraduate career, Brother Saraiya has served KDR in a number of different ways. He pledged the Tau Chapter at Carnegie Mellon University and transferred to Purdue University to finish his undergraduate degree. After transferring to Purdue, Bimal became immediately involved with Theta Chapter by assuming the position of quaestor and creating a sound financial management system for the chapter. Bimal was also involved with the University Campus Appeals Board. He founded the Technology Commission, a joint effort between IFC and the Panhellenic Association. Bimal volunteered with an interfraternal team that helped to train six staff members of Theta Chi International Fraternity. Bimal now works as a Software Engineer for I2.com in Dallas, TX.



## OUTSTANDING PLEDGE LUCAS LOGAN, EPSILON '04

During pledging, Luke became very active in the chapter and campus. He was elected quaestor immediately following his pledge semester. Luke was also elected to the secretary/treasurer position for the Interfraternity Council. Between his other jobs and responsibilities, Luke volunteers at the local Masonic home and spends time in the campus television studio. Brother Logan earned a 3.61 GPA during his pledging semester.





# and Scholarships

## More than \$32,000 in Scholarships Awarded

**Beta Chapter Scholarship - \$500**  
Joshua David Goldman, Beta

**Briggs Scholarship - \$500**  
Michael Alan Robb, Phi Alpha

**Commerford B. Martin Engineering  
Scholarship - \$1,000**  
Adam Wickenheiser, Beta

**Delta Chapter Scholarship - \$500**  
Kyle P. Wheeler, Delta

**E Mayer Maloney Memorial  
Scholarship - \$500**  
Sean Precious, Eta

**Elmon M. Williams MBA  
Scholarship - \$900**  
Greg Carter, Theta

**Eta Chapter Scholarship - \$500**  
Gregory Uhrhan, Eta

**Graduate Scholarship - \$1,000**  
Vladimir J. Palen, Chi Beta

**Horace E. Shackelton Memorial  
Scholarship - \$500**  
Adam Wickenheiser, Beta

**Inactive Chapters Scholarship -  
\$1,000**  
Jefferey Tylach, Beta

**John C. Carl Upsilon Alpha  
Scholarship - \$500**  
Eric Dupont, Upsilon Alpha

**John C. Carl Theta Scholarship -  
\$700**  
James R. Wilson, Theta

**Kramer Scholarship - \$500**  
William D. Johnston, Zeta

**Lambda Scholarship - \$500**  
Alexander Y. Porto, Lambda

**O. D. Roberts Memorial  
Scholarship - \$500**  
Phillip C. Zimmerman, Psi

**Past Recipients Scholarship - \$500**  
Eric McMullen, Upsilon Alpha

**Pi Alumni Scholarship - \$500**  
Noah Schwartz, Delta

**Rho Alumni Scholarships - \$3,500**  
Carter Figueroa, Rho  
Bradford Douglas Hill, Rho  
Paul Mizak, Rho  
Dana T. Newcomb, Rho  
Youlian A. Petkov, Rho  
Clinton W. Wrigley, Rho

**Robert D. Lynd Scholarship - \$500**  
Eric Dupont, Upsilon Alpha

**Theta Scholarship - \$500**  
Greg Carter, Theta

**Theta Veterans Scholarship - \$900**  
Greg Carter, Theta

**Wally J. Miller Memorial  
Scholarship - \$500**  
Robert Shanafelt, Zeta

**William Hogan Theta  
Scholarship - \$650**  
James R. Wilson, Theta

**Zeta Chapter Scholarship - \$500**  
Frank Tedesco, Zeta

## OUTSTANDING ADVISOR DR. ROBERT MARBACH, ETA BETA HONORARY

During the last 11 years, Dr. Marbach has played a major role in the fraternity. He conducts educational programs for each new member class, cheers on the sidelines of every intramural game and has even set-up and participated in community service events throughout the years. This past spring, Dr. Marbach joined the undergraduates as they traveled to the Regional Conclave. The following quote from the chapter best describes Dr. Marbach's investment in the fraternity. "It is our seniors that he gets the most emotional about and every semester he can be seen in the back of the room at the formal meeting with a tear in his eye and a lump in his throat. I often wonder how it can be possible to care so much for so many people." This is the second year in a row that Dr. Marbach has received this award.



## GREEK ADVISOR OF THE YEAR SIMI WILHELM, COLGATE UNIVERSITY

Our chapters greatly benefit from the positive influence of the campus professionals that advise them. Simi Wilhelm of Colgate University has played an instrumental role in the development of Delta Chapter. She worked very closely with the local chapter and built a strong relationship with the staff of the national office in order to build strength into this group and help steer them through some challenging events. Her talent, approach, dedication and persistence are exemplary. This is the first year that the National Fraternity has chosen a leader from among the impressive group of campus Greek advisors that we are fortunate to work with. Simi's selection sets a very high standard for the future.





On September 21, the NIC held its first Congressional Reception. The event was extremely well attended by members of both houses of Congress and from both sides of the partisan aisle. Bob Swinney, national president, and Chris Miller, executive director, represented Kappa Delta Rho at the event.

RADM James Carey, a member of the Zeta Psi Fraternity, is a member of the NIC board and currently serves as the NIC's Government Relations chair. He and a dedicated group of volunteers worked tirelessly to organize a wonderful event that allowed fraternity volunteers and staff members to discuss important fraternity issues with our elected leaders who are also members of fraternities. A special thanks to interfraternal brother Carey.

Congressman Ed Pease, a member of Pi Kappa Alpha Fraternity, served as the NIC president for the past year and is pictured in between Chris Miller and Bob Swinney. Ed managed and led a very significant amount of change and improvement in the NIC over the last year in the areas of government relations and public relations.

## CONGRESSIONAL RECEPTION North-American Interfraternity Conference (NIC)



## J. P. POLIDORO, PH.D., BETA ALPHA '65 Book Release: "Rapid Descent – Disaster in Boston Harbor"

Jack Polidoro, Ph.D., graduate of C.W. Post in 1965 and KDR brother from Beta Alpha Chapter has recently published a novel entitled "Rapid Descent – Disaster in Boston Harbor". The fictional account of a failed commuter flight from Boston's Logan to Manchester NH Airport is a thriller. The novel encompasses a series of complex events involving Logan, Boston Harbor and the Sumner Tunnel. "Dr. Jack" is currently Director of Marketing and Sales for a Biomedical Company in northern Nevada. He lives on the east coast in Laconia, NH. He received his MS and Ph.D. from the University of Massachusetts in 1968 and 1972.

"Dr. Jack" has also been a songwriter (folk venue) for 30 years; publishing 6 CDs/cassette productions of his own compositions. While at C.W. Post the KDR brother was a member of the folk group "The Oxford Gentleman" and also played lacrosse. Polidoro's novel is his first and is available from Longtail Publishing 1391 Old North Main St. Laconia NH 03246 (603-524-1102), also from Sundial Shops ([www.sundialshop.com](http://www.sundialshop.com)) or from Amazon .com on the Net.

The novel has received rave reviews in New England and on Amazon, and is presently being considered for a made for TV movie. Jack welcomes

correspondences or calls from C.W. Post Alumni and Kappa Delta Rho brothers. His email is: [j.Polidoro@worldnet.att.net](mailto:j.Polidoro@worldnet.att.net)



*Nu Chapter Alumni at Reunion*



## A NEW CHARTER AT MIDDLEBURY

On October 24, 2000, the National Fraternity recognized the Kappa Delta Rho Society - Alpha Chapter with a charter. The event was a marvelous celebration of brotherhood, strength of the undergraduate brothers of Middlebury College and the history of Kappa Delta Rho.

In the afternoon, the undergraduate brothers organized a walking tour to Old Painter Hall and the 50th anniversary commemorative plaque. That evening the brothers arranged a formal meal for a packed room in the chapter house.

Bob Swinney, national president, and Chris Miller, executive director, addressed the brothers prior to presenting the charter. In their comments, they recognized the accomplishments of the Alpha Society. They also discussed the responsibility that comes with Kappa Delta Rho membership and particularly with being a KDR from Middlebury.

In addition to our undergraduate Middlebury brothers, Glenn Jarrett, Alpha '70; Ray Walch, Alpha '46; and Steve Blum, Beta '72, also participated.

Congratulations to the Alpha Society!



*Ann Russell, Chris Miller, Bob Swinney, Glenn Jarrett and Scott Letourneau.*

## Manual recount needed for DC area alumni event

The National Fraternity of Kappa Delta Rho hosted a social event for all KDR's in the greater Washington, DC area. With more than 800 alumni in the area, a successful event was inevitable.

Fifteen chapters were represented on Saturday November 11, 2000, at Capitol City Brewing Company near Capitol Hill. Although our nation's next president was still undecided, 50 brothers and 70 total attendees (after a manual recount) enjoyed an evening of networking, renewing old friendships and starting new ones.

Representatives of the national office staff, fraternity directors, and foundation trustees were available throughout the evening to answer questions and deliver the latest and greatest news surrounding our state of affairs. Special thanks go to Ryan Schoenfeld and other Lambda Beta alumni who helped make phone contacts for the event.

A new method of registration was used for this event. More than 30 brothers took advantage of online registration via a link found on the KDR homepage. During the event Paul Sisco, Eta '50, shared various stories regarding his days as leader of the DC area alumni group in the 1970's. He challenged the "younger breed of brothers" to begin holding successful annual events for this area. Several brothers, including Ryan Schoenfeld, Lambda Beta '95, and Robert Merriner, Omega '73, expressed interest in accepting this challenge. Good luck guys!

The next scheduled National alumni event will be in Indianapolis. It will take place during the convention on August 10 or 11, 2001.

Don't forget that each active alumni corporation pays to send an alumni delegate to convention. Unfortunately, many corporations do not take advantage of this. New alumni sessions and programming topics will be presented at this year's convention. The convention is one of the best ways to help build stronger alumni relations. Previous alumni programming at convention included budgeting, housing contracts, newsletters and tax information.

This year's programming is not complete, but we are looking into topics surrounding websites for corporations, insurance and roundtable discussions with the board of directors. Keep checking the KDR homepage under alumni events for more details. If your chapter is holding an event and you wish to publicize it on the homepage please contact the national office.

I would like to encourage every alumnus to help in some way in the "Continuation of Brotherhood."

*Chris Gordon, Zeta Beta '95  
Vice President of Alumni Affairs*



## Chapter Eternal

### BETA

Harlan B. Williams, Jr., Beta '88  
Arlington, VA

From his sister: Harlan passed while in the woods of Uganda vacationing with friends and looking for gorillas. This was the first of several jaunts the group planned during their three-week trip that was to end in Cairo.

### ZETA

Harry H. Yates, '31  
Greensburg, PA

Members of the National Staff were able to attend his funeral service per the invitation of his daughter.

George Ogden, '46  
Morrisville, PA

### ETA

Lorin D. Whittaker, '28  
East Peoria, IL

Founder of Whittaker and Mammolito Surgical Associates, Lorin also authored two books, "Laugh Away Your Tensions" and "How to Lose your Tensions, Stay Healthy, and Be Happy." From his son: He spoke to me of his good years in college and his KDR friendships and I know he thought highly of the fraternity.

Hubert E. Blazina, '49  
Anaheim, CA

### KAPPA

Robert E. Walter '52  
Phoenix, AZ

### LAMBDA

John A. Reshoft, '30  
Springfield, VA

W. Drew Chick, Jr., Lambda '33 (pin number 124) shared the news of brother Reshoft's passing with the national office. John served in a variety of public park development and management roles, and was recognized with the United States Department of the Interior's Distinguished Service Award in 1970.

Jack W. Stricker, '31  
Newport Beach, CA

Information from his daughter, Janice Lehotka: Jack served as legal counsel for Hughes Aircraft.

### PI

Albert S. Peeling, '25, Chapter Founder  
Hyde Park, NY

From his son: Albert had a good long life of 96 years.

### RHO

Allan N. Dean, '43  
Sun City Center, FL

### TAU

James C. Reynolds, '37  
Staunton, VA

## MAILBAG

July 21, 2000

Dear Sir,

When I was at school, and a few times since, folks would ask why I joined a fraternity. My stock answer, and it was true, was that when I went out on campus, no matter what I looked like or how I felt there were 50 or so people who were glad to see me. It wasn't a "herd" mentality. It wasn't "being a follower." It was a matter of brotherhood. Some of us didn't like each other so well. But, we stood together when the time came to stand together. I knew they were there for me and I was proud of all of them.

In 1986, my step-brother died. I say step-brother only to clarify, not minimize the relationship. We were very close. His death was a cataclysm for my family.

One of the few warm memories for me from that time is from the memorial service. We sat in the front pew of our church, with most of the town packed inside or standing outside in the cold. I was concentrating on keeping my vision clear and my head straight so I could be sure to get my family back to the house okay.

My mother leaned over to me and through her tears said, "Aren't those your fraternity brothers?"

I looked back over my shoulder and there, lined up like sentinels against the wall, was a contingent of the brothers. They stood there tall and strong, watching over me and my family. I don't remember if I waved or acknowledged them in any way. But, I knew they were there and it meant the world to me.

That was the fraternity experience for me in a nutshell. I knew they were always there — like-minded men, bonded by tradition and loyalty. I wouldn't have traded it for anything.

Anyway, you'll have to forgive me for the nostalgia. To tell the truth, I didn't stay in touch with many of the guys after I graduated. I haven't seen most of them in 12 years. But, I still think about them sometimes.

I didn't stay involved and I appreciate the efforts of those of you who have.

Faternally yours,

Ryan H. Loberg  
Phi Alpha '88

Sigma Chapter at Oregon State University is beginning efforts to recolonize. Sigma Alumni of Kappa Delta Rho, Inc., is seeking a brother to assist us with the organizational efforts, project management and ancillary tasks associated with recolonization. This is an excellent opportunity to develop a resume while promoting the values and qualities we value in Kappa Delta Rho, to other students through the reestablishment of Sigma Chapter.

Oregon State University annually enrolls approximately 17,000 students, 3,000 of them graduate students, in its 12 academic colleges. Oregon State University is the only comprehensive Carnegie I Research University in Oregon and serves as the state's land, sea, and space grant institution.

The City of Corvallis, an attractive community of approximately 50,000, is ideally situated in the mid-Willamette Valley, in close proximity to the Pacific Coast, Cascade Mountains and Portland Metropolitan area.

For those brothers who have need, the Sigma Alumni of Kappa Delta Rho, Inc., Board of Directors is willing to discuss possible compensation with specific task effort and performance expectations.

Please respond with a letter of interest to  
Sigma Alumni of Kappa Delta Rho, Inc.  
Attention: Aaron D. Howell, C.R.M., President  
3017 Bridlewood Loop SE  
Albany, OR 97321  
E-mail: Aaron.Howell@orst.edu



# National Directory

## THE NATIONAL FRATERNITY OF KAPPA DELTA RHO

### BOARD OF DIRECTORS

(Parentheses indicate the year this seat comes up for election)

#### President (2004)

Robert L. Swinney, Sigma '58

#### Executive Vice President

Christopher B. Miller, Tau Alpha '97

#### Vice President/Standards and Risk Management (2002)

Joshua L. Smith, Alpha Beta '93

#### Vice President/Finance and Administration (2004)

John V. Dempsey, Jr., Upsilon Alpha '90

#### Vice President/Education (2004)

Mark N. Lundgren, Nu '70

#### Vice President/

#### Alumni Affairs (2004)

Christopher K. Gordon, Zeta Beta '95

#### Secretary (2000)

Gerald L. Murray, Theta '66

#### Treasurer (2000)

Edward B. Curtis, Rho '62

#### Director/Insurance

Programs (2002)  
J. Hall Jones, Lambda Beta '91

#### Directors (2002)

David Bernstein, Omicron Alpha '88  
Vernon E. Hurd, Pi Alpha '97  
Robert G. Jennison, Alpha Gamma '02  
Richard O. Jones, Nu '64  
Gregory T. McNamara, Sigma Beta '01  
J.R. Rees, Nu '01  
Brian J. Stumm, Iota Beta '92

#### Directors Emeritus

Robert D. Corrie, Beta '53  
James F. Edgeworth, Sr., Psi '56  
Robert D. Lynd, Iota '67

### COMMITTEES

#### Alumni Affairs

Christopher K. Gordon, Zeta Beta '95 - Chairman  
Richard O. Jones, Nu '64  
Ryan B. Schoenfeld, Lambda Beta '95  
Brian J. Stumm, Iota Beta '92

#### Finance

Edward B. Curtis, Rho '62 - Chairman  
John V. Dempsey, Jr., Upsilon Alpha '90  
J. Hall Jones, Lambda Beta '91  
Christopher B. Miller, Tau Alpha '97  
Scott M. Smaniotto, Alpha Beta '93  
Brian J. Stumm, Iota Beta '92  
Robert L. Swinney, Sigma '58

### Website

John V. Dempsey, Jr., Upsilon Alpha '90 - Chairman  
Scott D. Payne, Zeta Beta '93

### Nominating

James F. Edgeworth, Sr., Psi '56 - Chairman  
Eric J. Duff, Zeta Beta '01  
Christopher B. Miller, Tau Alpha '97  
Douglas M. Rammel, Pi Alpha '90  
J.R. Rees, Nu '01

### Expansion

Vernon E. Hurd, Pi Alpha '97 - Chairman  
Wm. Scott Bradley, Zeta Beta '99  
Robert G. Jennison, Alpha Gamma '02  
Gregory T. McNamara, Sigma Beta '01  
Gerald L. Murray, Theta '66  
Bimal N. Saraiya, Theta '00  
Eric J. Duff, Zeta Beta '01 - Consultant

### Education

Mark N. Lundgren, Nu '70 - Chairman  
Eric J. Duff, Zeta Beta '01  
Benjamin K. Willis, Zeta Beta '96

### Ordo Honoris

Robert D. Corrie, Beta '53 - Chairman  
Paul A. Downes, Gamma '69  
L.L. "Stub" Stewart, Sigma '32  
Mark S. West, Upsilon Alpha '88

### Convention Committee

Scott A. Johnson, Phi Alpha '95 - Chairman  
John Kapell, Eta Beta '95 (Dean of the Leadership Academy)  
Paul A. Downes, Gamma '69  
Christopher K. Gordon, Zeta Beta '95  
Jerry Stebbins, Phi Alpha '88  
Mark S. West, Upsilon Alpha '88

### Chapter Awards Committee

Scott Johnson, Phi Alpha '95 - Coordinator  
Scott Chesky, Iota '94  
Frank Hattula, Nu '94  
Vernon Hurd, Pi Alpha '97  
Rafael Isaac, Iota Beta '91  
Jon Kapell, Eta Beta '95  
Brian Leckrone, Epsilon '86  
Eric Mitchelltree, Alpha Alpha '90  
Doug Vogel, Tau Alpha '96  
Corey Waltz, Tau Alpha '96

## THE KAPPA DELTA RHO FOUNDATION

### BOARD OF DIRECTORS

#### President

David R. Hamrick, Zeta '57

#### VP Investments/Secretary

Ray C. Hunt, Rho '53

#### Treasurer

Robert D. Corrie, Beta '53

### Trustees

Andrew F. Barth, Nu Alpha '83  
James H. Buterbaugh, Zeta '55  
John C. Carl, Theta '51  
Paul A. Downes, Gamma '69  
George A. King, Delta '81  
Thomas C. Lockwood, Nu '56  
Robert D. Lynd, Iota '67

### Investment Committee

Ray C. Hunt, Rho '53 - Chairman  
Andrew F. Barth, Nu Alpha '83  
Robert D. Corrie, Beta '53  
William J. Paris, Eta '87  
Robert P. Youngman, Alpha '64

### Scholarship Committee

John David Reed, PhD., Eta '64 - Chairman  
Thomas L. Guthrie, Theta '62  
Dr. Alan T. Lord, Kappa '72

### Law Scholarship

Paul W. Upson, Alpha '66

### Order of the Peregrine

Falcon Committee  
Michael Higley, Beta '97

## CHAPTERS

### Kappa Delta Rho Society

Alpha Chapter  
Middlebury College

### Kappa Delta Rho Fraternity

Alpha (inactive)  
Middlebury College

### Beta

Cornell University

### Gamma (inactive)

University at Albany (S.U.N.Y.)

### Delta

Colgate University

### Epsilon

Franklin College

### Zeta

Penn State University

### Eta

University of Illinois

### Theta

Purdue University

### Iota

Bucknell University

### Kappa (inactive)

Ohio State University

### Lambda

University of California - Berkeley

### Mu (inactive)

University of Michigan

### Nu

Indiana University

### Xi (inactive)

Colby College

### Omicron (inactive)

Butler University

### Pi (inactive)

Gettysburg College

### Rho

Lafayette College

### Sigma (inactive)

Oregon State University

### Tau

Carnegie Mellon University

### Upsilon (inactive)

Fresno State University

### Phi (inactive)

University of Oklahoma

### Chi Colony (inactive)

University of Florida

### Psi

Lycoming College

### Omega

Indiana University of Pennsylvania

### Alpha Alpha

Lock Haven University

### Beta Alpha (inactive)

C.W. Post College

### Gamma Alpha (inactive)

Bradley University

### Delta Alpha (inactive)

Rhode Island State University

Epsilon Alpha (inactive)  
Lewis University

Zeta Alpha (inactive)  
University of Dayton

### Eta Alpha

Robert Morris College

### Theta Alpha

Slippery Rock University

### Iota Alpha

University of Pittsburgh/Johnstown

Kappa Alpha (inactive)  
Illinois State University

Lambda Alpha (inactive)  
Gannon University

Mu Alpha (inactive)  
West Virginia University

### Nu Alpha

Columbia University

### Xi Alpha (inactive)

Temple University

Omicron Alpha (inactive)  
Rutgers University

### Pi Alpha

University of Toledo

Rho Alpha (inactive)  
Bryant College

Sigma Alpha (inactive)  
Hofstra University

### Tau Alpha

Radford University

### Upsilon Alpha

St. Louis University

### Phi Alpha

Clarion University

Chi Alpha (inactive)  
University of Pittsburgh/Greensburg

Psi Alpha (suspended)  
Penn State Behrend College

Omega Alpha (inactive)  
Virginia Commonwealth University

### Alpha Beta

University of Delaware

### Beta Beta (inactive)

Ball State University

Gamma Beta (inactive)  
Virginia Tech

Delta Beta (inactive)  
West Liberty University

Epsilon Beta  
Old Dominion University

### Zeta Beta

Tarleton State University

### Eta Beta

West Chester University

### Theta Beta (inactive)

NY Institute of Technology

### Iota Beta

Rochester Institute of Technology

### Kappa Beta

Edinboro University

### Lambda Beta

James Madison University

### Mu Beta

Syracuse University

### Nu Beta (inactive)

Fordham University

### Xi Beta (inactive)

University of Pittsburgh

### Omicron Beta

William Paterson University

### Pi Beta (inactive)

Richard Stockton College

### Rho Beta (inactive)

Eastern Illinois University

### Sigma Beta

University of North Carolina/Greensburg

### Tau Beta (inactive)

East Tennessee State University

### Upsilon Beta

Clemson University

### Phi Beta

The College of William and Mary

### Chi Beta

University of Charleston

### Psi Beta

East Stroudsburg University

### Omega Beta

University of North Carolina/Asheville

### Alpha Gamma

University of Detroit/Mercy

### Provisional Chapter

Loras College

## ATTENTION PARENTS

Does your student have a new address? Please help us stay up to date. Send, fax, or e-mail any new information so that no fraternity event happens without his/her knowledge.

### Name of Brother

\_\_\_\_\_

### School and Year of Graduation

\_\_\_\_\_

\_\_\_\_\_

\_\_\_\_\_

### Old Address

\_\_\_\_\_

\_\_\_\_\_

\_\_\_\_\_

\_\_\_\_\_

### New Address

\_\_\_\_\_

\_\_\_\_\_

\_\_\_\_\_

\_\_\_\_\_

\_\_\_\_\_

### Telephone

\_\_\_\_\_

### Email

\_\_\_\_\_

### Please send responses to:

Kappa Delta Rho, Inc.  
331 South Main Street • Greensburg, PA 15601  
Fax Number: 724.838.7101  
Email: Sue@kdr.com



## A Note from Stub Stewart, Sigma '32

**K**appa Delta Rho at Oregon State was a great experience for me. We had some good times and some tough times, but we learned to live and work together. Many of the things I learned during my time at KDR came in handy, later in life, as I worked to build my father's lumber company into a major player in the Oregon timber industry.

I think KDR provides experiences like the one I had to lots of young people, at a lot of different colleges. You can't find that experience in a classroom.

Years ago, the National Fraternity wasn't much. And, as far as I know, there wasn't a Foundation. But, I've watched in recent years as the Fraternity has kind of grown up and begun to play a much more important role with our chapters. I think that's important. If we, as an organization aren't stable financially at the National level, then we can't be effective supporting our chapters and their members.

I've met with Bill Paris from the Foundation, as well as others over the years, and have gotten a pretty good idea of our potential. When Bill talked to me about the *Vision 2000 Campaign*, I thought here was a great chance for KDR to really take a step forward.

I thought seriously about the campaign, and decided it was a good chance for me to 'give something back' for my experience. I'm very pleased to support the campaign through a provision in my Charitable Remainder Trust to help ensure that future generations of KDR's have the same great experience I did.

*Submitted by Loran (Stub) Stewart, Sigma '32*

*Stub currently serves on the nominating committee for the Ordo Honoris. His life-long commitment to Kappa Delta Rho is greatly appreciated.*

# VISION

*A Campaign for Kappa Delta Rho*

## CAMPAIGN COUNTER

Pledges payable over five years

VISION 2000 Campaign pledging ends December 31, 2002

**GOAL: \$5,000,000**

	Goal	Committed as of June 30, 2000
Cash Commitments	\$2,500,000	\$1,002,453
Estate Gift Commitments	\$1,750,000	\$282,000
General Fund	\$750,000	\$466,570
<b>TOTAL: \$1,751,023</b>		

## KDR CALENDAR

- Aug. 9-12 Williams Leadership Academy and National Convention — Indianapolis, IN
- Aug. 10 KDR Alumni Social — Indianapolis, IN
- Nov. KDR Regional Alumni Social — TBD
- Aug. 2005 KDR Centennial Celebration



Kappa Delta Rho, Inc.  
National Office  
331 South Main Street  
Greensburg, PA 15601

Address Service Requested

NON PROFIT  
ORGANIZATION  
US POSTAGE PAID  
PERMIT # 1715  
PITTSBURGH, PA 15290