

Quill & Scroll

WINTER 1999

THE MAGAZINE OF KAPPA DELTA RHO



FROM THE ARCHIVES

More unidentified photos.

Can you help?

(more on page 19)

▲ Omega Chapter at their Walk to Pittsburgh. What year?
Do you recognize anyone?

INSIDE:
Alumni Submissions
National Convention
Foundation News
Donor Report
Chapter Awards
Scholarship Winners

▶ Rho Chapter.
Can anyone identify the year or individuals?



From the President

The Fall semester is off to a great start on a number of fronts — the chapters are enthusiastically working on rush programs, community projects, leadership training, and alumni events. In addition, the National staff is being supportive with on-site visits to all chapters to assist where and when necessary. I am proud and happy to say that chapter visits by the National staff will be at the highest level ever during this school year. This is one of our highest priorities as we work to build strength and health into chapters and alumni groups.

We had a great “kick-off” for the Fall semester with a highly successful National Convention in Chicago during August. Alumni, staff, undergraduates and volunteers came together in a dedicated and enthusiastic way that provided three days of fun, learning and motivation. The convention concluded with a combination Ordo Banquet and Awards ceremony that really celebrated what Kappa Delta Rho represents.

Once again I want to thank the Kappa Delta Rho Foundation for the support they provide for many of our Fraternity programs. As an example, the annual convention is funded primarily by grants from the Foundation.

The Board of Directors continues to be involved and committed to providing personal time and leadership to the KDR programs that are necessary to fulfill our mission. At our August Board meeting it was determined that this year's priorities will be:

- Recruitment
- Financial health and responsibility at chapter level
- Chapter visits/training by National staff

This does not mean that there are not other important subjects to work on, but these three get the primary emphasis. Committees composed primarily of board members, but also including other alumni volunteers, are working on subjects such as finance, KDR web-site, alumni affairs, expansion, education, and risk management.

We look forward to the comments, notes, and letters we receive from both undergraduates and alumni. The time

and thought you put into your suggestions is appreciated, and we do read, distribute, and properly consider each and every one.

The volunteer involvement, by numerous alumni, continues to provide much of the expertise and strength we need to continue to build KDR. The National Convention was an outstanding example of many volunteers working with the KDR staff to organize meetings, arrange the alumni social, lead training sessions, and contribute time and suggestions to help us improve our future events. My thanks to all of you who give so generously of time, effort, and money to keep our programs strong and intact.

If you would like to attend a fun and informative event, mix with undergraduate and alumni brothers, and really renew some memories of KDR, put the August 10-13, 2000 National Convention on your calendar. We'll be in Philadelphia — impossible not to have a good time.

It's time to close this letter, but I'll do so by mentioning a recent campus visit I made. I had the privilege and opportunity to visit Middlebury College in September — my first time. Being a KDR for over 44 years it was very moving to see where KDR was founded (Old Painter Hall). To then be able to visit The Alpha Society and meet the Brothers, and discuss KDR and Middlebury history was very special and something every KDR should have the opportunity to do. The current chapter leadership is very impressive, and that is reflected scholastically, where the chapter leads the National Fraternity.

Take care—hope to see you soon.

Faternally,
Robert L. Swinney, Sigma '58
President



From the Executive Director

Last year, KDR achieved a higher level of success by selecting critical areas for focus, setting objectives and then creatively meeting those objectives. The Board of Directors evaluated the organization's progress in August and selected this year's development areas. In the coming year (a new millennium — yes, even KDR is now saying it) Kappa Delta Rho will focus its organizational resources on: continuing to build strength through increased recruitment, building financial health and responsibility at the chapter level, and training undergraduate brothers with on-site chapter visits.

Bob Swinney and I have mentioned many times the three-legged stool of KDR which constitutes the chapters, alumni and national. These priority areas do not affect the continued development of the legs. In fact, they allow us to methodically build the balance and strength of each of the three areas.

Supporting the Increased Recruitment Success

Last year, the Fraternity increased recruitment. In the coming year, the National Office plans to be more successful by continuing our personal interaction with each chapter. This year's recruitment goals were developed and set by the chapters during a work shop facilitated by Doug Rammel, Pi Alpha '90, national vp for finance and administration. Yet again, this goal is an increase over last year's goal. The Executive Director, Director of Programming and Member Services and the Programming Coordinators will continue to aggressively visit with chapters at the beginning of each semester to help the chapters get their recruitment plans squared away from the start. This strategy paid off last year, and with the addition of several National Office staff members, we will be raising the bar again.

Financial Health

Every organization is moderated by its ability to provide services and maintain its focus. Capital health and stability are

important not only for the National Fraternity as an organization, but to each chapter, as they are organizations themselves that, when combined, comprise the entire entity.

The fraternity will benefit from a system of financial mentors. This non-formal approach will include various volunteers and staff members working with specific chapters to help guide them in sound money management capabilities and to stay on top of financial issues as they arise.

Additionally, we have made some changes in our infrastructure to help address problems before they get unmanageable. Chapter bills will be periodically mailed to chapter advisors and alumni corporation presidents so that everyone has an equal access to the information necessary in advising our chapters on their financial management programs.

Chapter Visits and Onsite Training

Last year, the National Office visited 35 of 41 chapters with a total of 69 visits (some chapters received multiple visits). This year, we have set a goal to visit with all 41 chapters, performing 125 individual visits (again, some chapters will receive multiple visits). This is an increase of 82% over our chapter visits last year. This increase is a direct result of our continued commitment to on-site training and the addition of staff to service our chapters.

In addition to the increased visits, all members of the National Office staff have been certified as TIPS Trainers. More information on TIPS is available in the National Programming update. We will be using this hands-on, interactive program to be proactive with regard to alcohol problems. A ton of prevention will surely pay off. A series of crisis situations very easily derails us from achieving our goals in other areas. This program is geared towards avoiding those crises.

KDR has been fortunate enough to add a Group of Intent at Loras College in Dubuque, IA. The University of Detroit Mercy Provisional Chapter continues to make significant progress towards chartering during the 2000 calendar year. More information can be found in the Expansion Committee update inside this edition.

Unfortunately, the Fraternity closed the Beta Beta Chapter at Ball State University. The chapter could not reasonably have been expected to recover from its financial, scholastic and recruitment setbacks with the resources that it possessed.

One clear lesson that has been learned over the last year was phrased perfectly by Justin Lookadoo, Zeta Beta '93, at the Leadership Academy. "If there is an obstacle that you do not overcome, you will be defined by that obstacle." The National Office is completely committed to overcoming our obstacles in the areas of recruitment, chapter financial management and on-site training. I look forward to updating you on our progress in the spring edition of the *Quill and Scroll*.

Faternally,

Christopher B. Miller, Tau Alpha '97
Executive Director



Quill & Scroll

Alumni Submissions.....	4
National Programming.....	5
Denver Alumni Event.....	5
Convention Highlights	6-9
Foundation News	10
Donor Listing	11-17
Chapter Awards & Scholarships	18
Chapter Eternal.....	18
Directory	19

Quill and Scroll (USPS 605-402), an educational journal, is published two times a year by Kappa Delta Rho, Inc., 331 South Main Street, Greensburg, PA 15601. Forward all correspondence, manuscripts, and changes to the National Office.

EXECUTIVE EDITOR: Christopher B. Miller, Tau Alpha '97

CONTRIBUTING EDITOR: Paul A. Downes, Gamma '68

ASSISTANT EDITOR: Jonathan H. Lay, Mu Beta '99

KAP

NATIONAL OFFICE

331 SOUTH MAIN STREET
GREENSBURG, PA 15601

1-800-536-5371 • www.kdr.com

FRATERNITY

Christopher B. Miller
Executive Director
Chris@kdr.com
Extension 12

Suzanne M. Balash
Office Manager
Sue@kdr.com
Extension 10

Lorraine M. Coy
Assistant Director of Gift
Planning and Development
Lorraine@kdr.com
Extension 15

Scott A. Johnson
Director of Programming and
Member Services
Scott@kdr.com
Extension 13

Wm. Scott Bradley
Programming Coordinator
Bradley@kdr.com
Extension 17

Jonathan H. Lay
Programming Coordinator
Jon@kdr.com
Extension 14

FOUNDATION

William J. Paris
Director of Gift Planning
and Development
Foundation@kdr.com
Direct 1-888-243-6357 or
Extension 16 at the
National Office

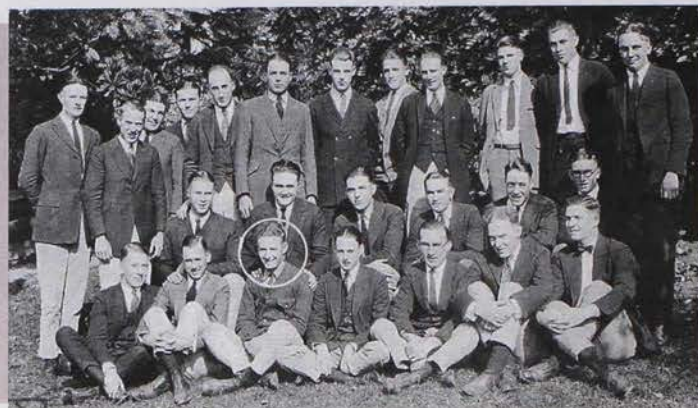
FROM THE ARCHIVES

Brethren:

Thanks for the Summer issue of the Q & S. A very good issue! Your featuring of Lambda Chapter (and Delphic) was much appreciated. To the best of my knowledge and memory, I am the only surviving charter member of both Delphic and Lambda Chapter. It has been a good ride since 1922, believe me! My one visit to Alpha Chapter at Middlebury was most pleasurable.

Many cheers for KDR.

John Smale, Lambda '24



Omega Beta Celebrates Recovery

The National Fraternity of Kappa Delta Rho prides herself on brotherhood. This brotherhood can be seen in many ways, shapes, and forms in the events that we participate in throughout the year. It's easy to be a brother when times are good, but how does a fraternity react when faced with tragedy? The brothers of the Omega Beta chapter at UNC-Asheville found out the hard way last November.

One of the new pledges for the Fall '98 class, Robert Mera, was critically injured when he fell off a moving vehicle while hitching a ride up to his dorm. The impact of the fall gave Robert a serious head wound. One of the brothers accompanied Robert as he headed to the hospital. When this brother realized the extent of the injury, he decided to notify the rest of the chapter.

Brothers started arriving immediately. It took only about two hours or so after the accident before the entire chapter had heard and dropped everything to be at the hospital for Robert. That night was one we'll never forget. The doctor performed a miracle surgery that saved Robert's life. Over the next two weeks, Robert had three more brain surgeries - all were considered last ditch efforts to keep him alive. As it turned out, Robert miraculously recovered from those surgeries, albeit slowly.

The brothers of Omega Beta Chapter were there for Robert every step of the way, and quite possibly the power of our wills together may have helped save Robert's life. It was a trying time for all those involved, but we really think some good came of this horrible misfortune. I'm convinced we are all stronger, better people because of it.

After the initial two weeks, which were filled with extreme apprehension, Robert began his long road to recovery. He remained in the Asheville Mission Hospital until December 18, when he was transferred home to a Philadelphia hospital for Christmas. He stayed there for another two-and-a-half months before he was released back home in early March. Since then, he has been doing physical therapy twice a week and has been learning how to walk again. Currently, he walks with a cane, and sometimes can even walk a short distance without it. The doctors expect him to be walking without any supports as soon as two months from now. Amazingly, Robert suffered no brain damage as a result of his head injury. In fact, it is to our great pleasure and amazement that we can announce Robert Mera's triumphant return to UNC-Asheville in January 2000.

On behalf of the Omega Beta Chapter (UNC-Asheville) brothers of Kappa Delta Rho.

Fraternally,
Colin McCandless

Scott Johnson, director of programming and member services, visits Robert Mera at home.



Frank Ioppolo, Beta Alpha '63, Receives Award

Brother Frank Ioppolo was recently named as a recipient of The 1999 Leadership Award for Outstanding Achievement in Business given by the Columbus Citizens Foundation, Inc. He was honored at a gala reception and dinner held at the Waldorf Astoria on Saturday, October 9, 1999. Brother Ioppolo was presented with the 1999 Tiffany Crystal Cut Prism Leadership Award to honor him for the pride, which he has brought to his Italian heritage by virtue of his outstanding accomplishments. Brother Ioppolo practiced law in a prominent New York City law firm prior to joining the Disney Company in 1989. He now lives in Orlando, Florida, with his wife Mella. He has served as chairman of the Leadership Florida Board of Regents and has been a member of the Board since 1992. Brother Ioppolo is also a member of the Board of Directors of the Orlando Museum of Art and the Board of Junior Achievement of Central Florida, and has chaired the Business Hall of Fame. He was appointed to the White House Commission on Tourism, is a member of the Bar of the United States Supreme Court, the Corporate Counsel Association of Fordham University School of Law, the Board of Visitors of the Fordham University School of Law and is a past member of the Board of Visitors of Wake Forest University. Brother Ioppolo is also a member of the Kappa Delta Rho Ordo Honoris.

Congratulations, Brother Ioppolo!

"Bones" Remembered Again

Please acknowledge "Bones Remembered" to KDRs, especially Curt Norris, page 5, Summer 1999. I wonder if David L. Ladd is a relation of my 1951 brother, Doug Ladd, who resides in Walpole, NH.

In 1950, Bones, Doug, George Usher and myself took off from Lake Dunmore in his seaplane, landing in Boston Harbor for a Middlebury-Tufts football game. My girlfriend lived in Newton and she provided dates. What is interesting is that on the homeward trip, over majestic mountains, no one could find Lake Dunmore. Finally, we landed with five minutes of fuel in the tank.

During my freshman year, 1949, Bones and I played hockey. I will remember always a centering pass to me, faked the DKE goaltender, and scored a goal. Bones and I were more than fraternity brothers, but very good friends.

Curt Norris, George Usher, Tom Lane, Doug Ladd, Bones Hunt and I were brothers and friends. Hope you'll acknowledge this note, possibly with further info on my 1948-1951 friends.

Sincerely,
G. R. Wyman

Editor's Note: Response sent with further contact information

TIPS TRAINING

All of the KDR National Office fraternity staff were recently certified as TIPS Trainers. TIPS, Training for Intervention Procedures, is a program designed to "prepare students with the skills and confidence to handle situations where alcohol is present; to intervene effectively to prevent peers from harming themselves or others." Many universities are starting to require this training for their Greek chapters on campus. This resource has been an excellent opportunity for KDR to lead discussions with our undergraduates regarding the responsible use of alcohol.



Lambda 10

The National Fraternity was recently listed at the top of the Lambda 10 website's *Out In Front* section that describes activities National Fraternities are engaging in to address the issue of sexual orientation in the Greek community. Check it out at www.indiana.edu/~lambda10.

Regional Conclaves

The 2000 Regional Conclave dates and locations have been chosen. If you would like to join us, please contact Scott Johnson, director of programming and member services.

Central - Psi Alpha (Penn. State Erie/Behrend) - Feb. 5
 Eastern - Iota (Bucknell) - Feb. 12
 South - Sigma Beta (UNC Asheville) - Feb. 12
 North - Mu Beta (Syracuse) - Feb. 19
 Midwest - Eta (Univ. of Illinois) - Feb. 26

Chapter Visits

Visiting with chapters is the number one tool that the National Fraternity has to affect our undergraduates. Please see the side chart for this year's visitation goals. Our three priorities from the National Board are: strengthen recruitment, build more financial health and responsibility on the chapter level and to conduct on-site training of undergraduates. Chris Miller, executive director; Scott Johnson, director of programming and member services; and Jon Lay, programming coordinator have been aggressively visiting with chapters to achieve each of these goals. For example, Scott Johnson visited with 15 chapters during the first three weeks of the semester to deliver his Vision Based Success motivational workshop.

Expansion Committee Update

Eric J. Duff, Zeta Beta '01, Chairman

The National Expansion Committee is comprised of volunteers that review expansion opportunities for the National Fraternity. One of our goals is to select good candidates at top-rate institutions and Greek systems. Another goal is to develop new chapters that will survive the test of time. Expansion is not a top priority for KDR; strengthening our current chapters and new colonies are the organization's focus. However, expanding the active chapter rolls through the re-colonization of closed KDR chapters and the development of high-quality new chapters is a necessity for the survival of the Fraternity.

The National Fraternity Board of Directors has given Group of Intent status to an incredible group of men at Loras College

in Dubuque, IA. Loras is a top-quality, private, catholic institution with approximately 1,800 students. This group operated as a local fraternity for the last five years, seeking a national affiliation. The group found KDR through a personal connection with Brother Scott Sikora, Rho Beta '94. They have made significant progress towards becoming a Provisional Chapter.

The University of Detroit Mercy has also been working very hard to become a chartered chapter of KDR. They have been highly successful in recruitment, fund raising and community service. At this year's Ordo Honoris, Chapter Awards and Scholarship Banquet, they took home the first place Leo T. Wolford award for Campus Involvement and third place in the George E. Kimball Social Service award. We continue to work with the group to develop a long-lasting structure that will ensure their success for many years to come.

KAPPA DELTA RHO is coming to the Mile High City! ALUMNI SOCIAL EVENT

Date: Friday, December 3, 1999 • Time: 7:00 PM • Venue: 1515 Market Street • Denver, CO

The cost will be \$20.95 per person plus tax and 19% gratuity.

This evening will offer an excellent opportunity to renew old friendships, start new ones, and network with KDRs from around the Denver area. Select members of the National Fraternity Board of Directors and National Office Staff will be on hand for you to hear the latest news on KDR.

If you are interested in joining fellow KDRs and their families from around the Denver area, please return the information below to the National Office. For more information, or to register by phone, please contact Lorraine Coy at 1-800-536-5371 ext. 15, or via email at Lorraine@kdr.com

Name _____

Chapter & Year: _____

Address _____

Phone: _____

E-mail: _____

How many will be attending? _____

Additional name(s) of those attending (as you would like it to appear on name tag):

1.) _____

2.) _____

Day 1, Thursday

10 a.m. Facilitators' Meeting

KDR was extremely fortunate this year to have 10 volunteer facilitators who really made the weekend a complete success. These facilitators led focused discussion groups throughout the Leadership Academy on a variety of topics.



Volunteers and staff prepare for the Leadership Academy.



Day 1, Thursday

1 p.m. Session

All undergraduates were asked to show up before 1 p.m. on Thursday, so that each small group could be formed without any changes in the group dynamics. Of 94 students registered to attend, 82 were able to get to the hotel prior to 1 p.m. — an incredible accomplishment in itself! Justin Lookadoo, Zeta Beta '93 kicked off the Leadership Academy with a spectacular presentation.

Day 1, Thursday

2 p.m.

After Justin's presentation, each of the undergraduate students was assigned to a small group with a facilitator who would stay together throughout the remainder of the weekend. Each group created a coat of arms to represent their values and common beliefs.

Each 'Academy Chapter' designed a coat of arms.



Justin Lookadoo, Zeta Beta '93, kicks-off the Leadership Academy.



'Academy Chapter' meeting to discuss specifics.

Day 1, Thursday

10 p.m. Facilitators' Meeting

A little tired, but very satisfied with the day's progress.

Day 1, Thursday

3:30 p.m. – 10 p.m.

Each large group presentation focused on a specific topical area. A small group meeting followed each presentation, so that the students could discuss specific ways to apply the material from the larger session to their respective chapters.



One Academy Chapter finds some fresh air.

Day 2, Friday

9 a.m. – 4 p.m. Group Presentations Continued

The same cycle of large and small group meetings continued all day. Topics included recruitment, risk management, dealing with conflict and, much, much more. Maureen Syring, assistant development director for the Delta Gamma Foundation, held a rousing etiquette session during lunch.



Etiquette lesson

1999 Williams Leadership Academy



Day 3, Saturday
9 a.m. – 12 noon – National Convention
 The business meeting for the Fraternity was held in the morning.

Day 3, Saturday
12 noon – 2 p.m. – Vision 2000 Kickoff Luncheon
 The Kappa Delta Rho Foundation hosted a luncheon to kickoff, Vision 2000, a \$5 million campaign for Kappa Delta Rho.

Day 2, Friday
8 p.m. – 12 a.m. – Chicago Area Alumni Social Event
 120 total attendees, including undergraduate and alumni brothers, and wives/friends, participated in a social event for alumni brothers from the Chicago area.



Undergraduates and alumni discussed KDR. From l-r: Ches Spencer, Sigma Beta '00, Greg McNamara, Sigma Beta '01; Robert Corrie, Beta '53



Vision 2000 Kickoff. Vernon Hurd, Pi Alpha '97, describes the importance of the Advisor's Institute

Day 2, Friday
5 p.m. – 8 p.m. – KDR Financial Industry Network-Chicago
 A panel of five alumni brothers from various backgrounds in the financial industry held an interactive session with undergraduate and alumni attendees to discuss career development and networking strategies and skills.



Financial Industry Network - Chicago panel discussion.

Day 2, Friday
4 p.m. – 5 p.m.
 Pizza Party sponsored by the Eta Chapter (University of Illinois). The Eta Chapter was generous to host a pizza party for all of the weekend's participants.



Chicago area alumni social.



Austin Lookadoo conducts an "Academy Conclave" session.

Academy and National Convention

Day 3, Saturday

2 p.m. - 3 p.m. — Graduation

Each Leadership Academy participant was presented with a graduation certificate by Robert Swinney, Sigma '58, national president. Each small group took a picture with the Ratti Stone. As a special surprise, Ray Walch, Alpha '46, presented the National Office with Founder Chester Monroe Walch's brother plaque. Ray is Chester Walch's nephew.



Day 3, Saturday

5 p.m. — Group Photo

Day 3, Saturday

6 p.m. — Ordo Honoris, Scholarship and Chapter Awards Dinner

This year's dinner was an extremely special occasion. Thirty-four awards for chapter success in all areas of chapter operations and programming were presented to the chapters. \$34,000 in scholarships was presented from the Kappa Delta Rho Foundation. Five brothers were inducted into *Ordo Honoris*. Brother Joseph Howell, Mu '30 was inducted posthumously and two of his daughters, Juanita DeJongh and Mary Jo Lewis, attended to receive his award on behalf of the family. They both told the attendees that they were unaware that their father's fraternity motto was "Honor Before all Things" until this night. However, they understood very clearly what his relationship was to KDR, because he lived his entire life in that manner.



Leadership Academy Graduation



University of Detroit Mercy Provisional Chapter accepts an award.



Ordo Honoris.
Juanita DeJongh and Mary Jo Lewis accept the award on behalf of Joseph Howell's, Mu '30, family.



Grand Consul's award for Most Outstanding Chapter went to Zeta Beta Chapter at Tarleton State University.



Chris Miller with Founder Chester Walch's KDR Plaque.

Indivi

Sigma Class of Ordo Honoris

The Ordo Honoris is the highest distinction that can be given to Kappa Delta Rho Brothers.

Nominations can be made in the areas of fraternity involvement, community involvement or professional accomplishment. The Sigma Class of Ordo Honoris has five members.

William C. Benton, Theta '59

Brother Benton graduated from Purdue University with a Bachelor of Science in Mechanical Engineering in 1959. He received his Master of Science in Industrial Engineering in 1964 from the Illinois Institute of Technology. His professional positions include serving as an assistant professor of technology at Purdue University, operations research director for Cummins Engine Company, principal of Fry Consultants and founder and chairman of Benton, Schneider and Associates in Lisle, IL. Brother Benton is the author and developer of the General Adaptive Inventory System (GAINS), which is used by over 200 corporations worldwide. During his career he has served as a consultant to international management for over 500 organizations.



William

dual Awards

In the community Brother Benton has held positions with the Board of Directors of the Bethlehem Food Bank, the Illinois Governor's Task Force on State Cost Control, the Naperville Homowners Association and the Naperville Citizens Community City Cost Control board. He has also been recognized by *Who's Who*, the Operations Research Society of America, the Institute of Management Sciences and the Institute of Industrial Engineers.

Murray G. Clay, Rho '30

Brother Clay graduated from Lafayette College with Bachelor of Science in Engineering. During his undergraduate years he served as Consul of Rho Chapter from 1929-1930. He was also a member of the Lafayette Maroon Club, the Planetary Society, Tau Beta Pi engineering honorary fraternity. He also served as president of the Physics Club.

After graduation, Brother Clay worked for RCA, Scott Radio and B.S. Foundry Company. In 1946, Brother Clay founded the Clay Spring Manufacturing Company. Today, Clay Spring generators make most of the precision springs used in the world. Brother Clay holds 37 US Patents and many foreign patents.

Joseph E. Howell, Mu '30

Brother Howell graduated from the University of Michigan in 1930 with a Bachelor's degree in Political Science. In 1932, Brother Howell began work with the *Tulsa Tribune*. Over the next 60 years, Brother Howell became a legend in the State of Oklahoma for his coverage of politics and the state's highway development.

Some of his accomplishments and honors include: The governor of Oklahoma and the mayor of Tulsa both declared his 80th birthday "Joe Howell Day"; he was a member of the Half Century Club of the

Oklahoma Press Association; the Department of the Army recognized him with the Patriotic Civilian Service Award; the Oklahoma Newspaper Foundation gave him the Beachy Musselman Award for Outstanding Contributions to Journalism; he was an honorary transportation commissioner, appointed by the state secretary of transportation; he was inducted into the Oklahoma Journalism Hall of Fame; and the Oklahoma Good Roads and Streets Association named the annual Joe Howell Excellence Award after him.

Arthur H. Smith, Xi '57

Brother Smith received his Bachelor of Arts degree from Colby College in 1957. During his undergraduate time Brother Smith served as Senior Tribune, Quaestor and Scholarship Chairman. He went to the University of Chicago Law School for his Juris Doctor, graduating in 1960.

After receiving his law degree, Brother Smith worked for Fuller and Henry as an attorney. His next position was with Owens - Illinois, Inc. Brother Smith served in various



capacities in the legal department and corporate assistant secretary. Since 1993, he has served as vice president, general counsel and secretary of Libbey, Inc. (NYSE - LBY)

Brother Smith has been extremely active in the community. He has been president of the Board of Education for both Maumee City and Penta County Vocational Schools. Brother Smith has also been an honorary member of the Ohio School Boards Association's Northwest Region. He has been a trustee of the Philosopher's Documentation Center and a Trustee of the Maumee Valley Girl Scouts. Brother Smith has also been a member of the Standing Committee of the Episcopal Diocese of Ohio and has served as the diocesan counsel.

Brother Smith is a member of the American, Ohio and Toledo Bar

Outstanding Senior

Robert Roche, Alpha Beta '99

Throughout his undergraduate career, Brother Roche served his chapter as Consul, Praetor, Pontifex, Scholarship Chairman and IFC Representative. He also volunteered for the Boy Scouts of America, the Robert Wood Johnson Hospital for Children with Cancer and Blood Disorders, Delaware Food Bank, and the Newark Community Day. After receiving his Bachelors of Engineering from the University of Delaware, Brother Roche went to work for the United States Army in the Aberdeen Proving Grounds.



Outstanding Pledge

Justin Gassett, Zeta Beta '00

During pledging, Brother Gassett helped Special Olympics on his campus and volunteered in the community through activities such as Habitat for Humanity, highway clean up, and Relay for Life donating both time and money. Along with his community involvement he has also been active on campus with organizations such as Student Government Association, the Alumni Ambassadors, and a new marketing fraternity, Pi Sigma Epsilon. Through all of these activities, Brother Gassett earned a 3.5 GPA.

Outstanding Advisor

Dr. Robert Marbach, Eta Beta H

During the last 10 years, Brother Marbach has played a major role in the fraternity. He conducts educational programs for each new member class, cheers on the sidelines of every intramural game and has even set-up and participated in community service events throughout the years. This past spring Brother Marbach joined the undergraduates as they traveled to the Regional Conclave. The following quote from the nominating materials describes this Brother's investment in the fraternity, "It is our seniors that he gets the most emotional about and every semester he can be seen in the back of the room at the formal meeting with a tear in his eye and a lump in his throat. I often wonder how it can be possible to care so much for so many people."



Outstanding Alumnus

Vernon Hurd, Pi Alpha '97

Over the last year, Brother Hurd has provided leadership, urging, advice and guidance to the National Office in a variety of educational programming and topical areas. He has been active in the Advisor's Institute and has been the advisor to the Pi Alpha Chapter. His unceasing efforts to support the National Fraternity's understanding and growth on topics of the day have been unparalleled.



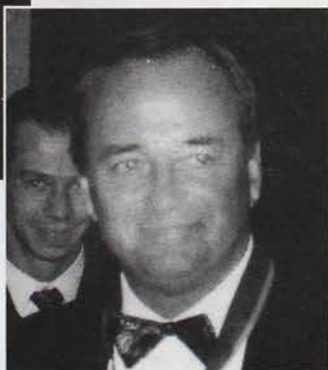
Associations. He has been chairman and secretary for several terms of the Bar Insurance Committee. Brother Smith is also a member of the American Society of Corporate Secretaries.

Anthony R. Pasquinelli, Eta '56

Brother Pasquinelli graduated from the University of Illinois in 1956 with his Bachelor of Science Degree. Since 1958 he has been a 50% stakeholder of Pasquinelli Construction. He is a past chairman of Beverly Bancorporation and a current director for St. Paul Bancorp - Chicago.

Brother Pasquinelli has also been active in the community as a member of the Plan and Zoning Commission in Flossmoor, IL. He is

a director of the Governor's State University Center for the Performing Arts and is a past director of the Flossmoor Country Club.



Kappa Delta Rho Foundation

Challenge Gifts Add "Zing" to General Fund

Ordinarily, I use my letter in the *Quill and Scroll* to highlight our successes since the last issue. This time, however, there is another topic that I believe really warrants my attention. Before I begin, I encourage you to review the various Foundation reports that acknowledge the generous gifts of more than 1,300 alumni. These gifts continue to strengthen KDR and its programs in the interfraternal world.

What has me so motivated to deviate from my normal report? CHALLENGE GIFTS! Last year we were very fortunate to have two generous Challenge Gifts. Brother Frank Thomas, Kappa '52, offered to match any new or increased gift from Kappa Chapter alumni. As a result, the number of individual Kappa Chapter alumni making a contribution increased 46 percent. In addition, the total dollars contributed by Kappa Chapter alumni increased 97 percent.

Even more spectacular were the results of a challenge made by Brother John Padgett, Beta '58. Brother Padgett made a challenge gift to his chapter brothers who he knew when he was in college, the graduates from 1953-1962. The match was a dollar-for-dollar match of any new or increased gift. As a result of the challenge, the number of Beta Chapter alumni making a gift

John's gift made Beta Chapter number 1!

increased by 10 percent. The total number of dollars contributed by Beta Chapter alumni increased by 152 percent! John's gift made Beta Chapter number 1 in unrestricted giving.

When Bill Paris, our director of gift planning and development, spoke with John, he was delighted to have met his goal of

making Beta Chapter number 1 in total number of dollars donated. However, he was disappointed that they were number 2 in the number of individual contributors, coming in slightly behind Theta Chapter.

Brother Padgett, very impressed with the impact of his challenge, has generously agreed to make a new, expanded challenge this year to all Beta Chapter alumni. According to John, "I don't need my name in lights, but I'm very impressed with the solid programs the Foundation is making possible. If I can help strengthen those programs and KDR in general, that makes me happy. And, if I can help get Beta chapter recognition for the gifts made by graduates from Cornell, all the better! I'd like to see Beta chapter number 1 in unrestricted contributions and in the number of alumni contributing!"

As president of the Foundation, it is very humbling to have the enthusiastic support of alumni like John and Frank. I am pleased to report that other challenge gifts are already underway or in discussion for other chapters. If you have interest in making a challenge gift, contact Bill Paris, director of gift planning and development at the Foundation office 331 South Main Street, Greensburg, PA 15601; (800) 536-5371 ext. 16; or by E-mail at Foundation@kdr.com.

With your help, I expect to see a record year for the Kappa Delta Rho Foundation General Fund Campaign!

Faternally,
Paul A. Downes, Gamma '68
President



On Saturday, August 7, 1999, the Kappa Delta Rho Foundation hosted a luncheon at the Chicago Marriott Schaumburg to publicly announce the VISION 2000 Campaign — a five-year, five-million-dollar endowment campaign.

The endowment campaign will benefit the KDR Foundation and its ability to support the educational programs sponsored by the National Fraternity.

According to Paul Downes, Gamma '68, foundation president: "KDR has always been a modest sized Fraternity. Other Fraternities are larger and better funded. This is our chance to strengthen the KDR Foundation and its ability to support the Fraternity's programs. **OUR CHANCE TO DO THIS IS FLEETING!** A generous gift from an individual alumnus made it possible for the Foundation to hire William Paris, as director of gift planning and development to oversee the campaign. Once the funding is used up, if the Foundation has not successfully completed the campaign, there will be no more funding left to continue the development work so vital to our future. **This is why we need YOU to make your commitment NOW!**"

The VISION 2000 Campaign has three different components. The first component is the cash gifts restricted to the endowment. There is a cash gift goal of \$2,500,000. At press time, we have \$717,425 in cash gift commitments toward our

VISION

A Campaign for Kappa Delta Rho

goal. These gifts cannot be spent, rather they are kept and invested. The income off of these endowment monies will provide funds with which the Foundation will support Fraternity programs.

The second component of the campaign is the estate gifts. There is an estate gift goal of \$1,750,000 for the campaign. At press time, we have \$210,000 in estate gifts established as a result of the campaign.

The third component of the campaign is the General Fund. **We must maintain the General Fund during the campaign!** The General Fund provides the money the Foundation uses each year to maintain its support for Fraternity programs. There is a campaign goal of \$750,000 for the General Fund. At press time, we have \$332,500 received toward this goal.

Take a moment to contemplate your experience in KDR. Think of the thousands of lives we touch. Think of how your gift can impact your chapter and the hundreds of young men who experience KDR on your campus.

All too often I've heard alumni and undergraduates complain about KDR being too small, unable to afford quality staff and programs, unable to intercede on behalf of our chapters. Well, this is all true! NOW is our chance to change all of that. Make KDR what we always wanted it to be. Empower the organization to continue to IMPACT lives! Expand and improve programs.

Funding will run out! VISION 2000 can succeed, but only with your participation. For once in our experience with KDR, let's look back and say "Gee, we really had a shot to strengthen KDR — I'm glad we did it!"

Join me! Join the alumni who have already committed over \$1,200,000 toward the success of VISION 2000. Do it today!

—William J. Paris, Eta '87

HOW LONG DOES THE CAMPAIGN RUN?
The campaign started September 15, 1997, and will conclude on December 31, 2002. Each individual has up to five years to fulfill their commitment from the date that it is made. All written commitments will be counted in the campaign total.

For more information on how you can participate in the VISION 2000 Campaign, contact Bill Paris, director of gift planning and development by phone, mail, or E-mail at 331 South Main Street, Greensburg, PA 15601; (888) 243-6357, Foundation@kdr.com. Or, visit the VISION 2000 Campaign on the web at www.kdr.com!

Heritage Society

MEMBERS RESPOND TO THE VISION 2000 CAMPAIGN

The Heritage Society is the planned giving recognition society of the Kappa Delta Rho Foundation. Those members who have notified the Foundation (and not requested to remain anonymous) are on the roster of members.

As part of the VISION 2000 Campaign, the Foundation has set a goal of \$1,750,000 in planned gifts. This is part of the total goal of \$5,000,000.

As we go to press, planned gifts established as part of the VISION 2000 campaign total \$210,000. What a great start! We need your help to achieve the goal set for the campaign.

If you are like most of us, planning your estate is not something you think about every day. In fact, many of us don't like to think about our own mortality at all. However, it is very important to make sure your plans are in place in case something happens to you. By doing so, you can be sure that your estate benefits those most important to you, in the most cost-efficient way, and as simply as possible to spare your loved ones unnecessary stress.

An estate gift to the KDR Foundation creates a charitable estate tax deduction. It also allows you to provide for future generations of KDRs. For the Foundation, planned gifts allow for growth in the endowment. These endowed funds generate income, in perpetuity, for scholarships and educational programs, which will affect the lives of generations of future KDRs.

What is an Estate Gift? An estate gift can be a bequest in your will. You might name the Foundation as a beneficiary of a life insurance policy, trust, or a retirement account such as a 401(k). You might also consider a "life-income" kind of gift such as a charitable remainder trust or gift annuity (where available).

If you are considering a gift, consult your attorney or financial advisor. We suggest the following wording as a common form of bequest. "I hereby give to the Kappa Delta Rho Foundation, a Pennsylvania Corporation, the sum of \$_____ to be used for the general educational purposes of the Foundation as the trustees may direct."

If you have remembered the KDR Foundation in your will or through another kind of planned gift, please let us know. You may write, call, or E-mail the planned giving staff at 331 South Main Street, Greensburg, PA 15601; (888) 243-6357; Foundation@kdr.com. We would be happy to acknowledge your thoughtful generosity and welcome you as a member of the Heritage Society.

HERITAGE SOCIETY MEMBERS

Ferd B. Ensinger, Alpha '44
Robert A. Jones, Alpha '59
James W. Kitchell, Alpha '51
Paul A. Downes, Gamma '68
Thomas R. Jensen, Zeta '50
Mrs. Alvah Borah, Eta '32
Timothy F. Moore, Eta '68*
Arthur S. Nelson, Eta '32
William J. Paris, Eta '87
John C. Carl, Theta '51
J. Gregory Carl, Theta '80
Daniel R. Johnsen, Theta '62
George J. Peer, Theta '45
Michael P. Pumilia, Theta '71
John D. Winters, Jr., Theta '55
Lee H. Idleman, Iota '54
Allen L. Shumard, Kappa '30
Christopher Harley, Lambda '74
Thomas J. Linnemeier, Nu '58*
Thomas V. McComb, Nu '59*
Max H. Schulze, Nu '61
Harold F. Lemoine, Xi '32
Maurice F. Ronayne, Xi '51

Loran L. Stewart, Sigma '32*
James F. Edgeworth, Sr., Psi '56
Nien-Tzu Chen, Alpha Alpha '94
Thomas B. Delac, Jr., Pi Alpha '94
Dean B. Rissolo, Rho Alpha '89
James D. Carroll, Alpha Beta '93
Joseph W. Rejuney, II, Epsilon Beta '90
Bradley S. Witzel, Lambda Beta '94

*New since the last edition of the *Quill and Scroll*

FRIENDS OF THE KAPPA DELTA RHO FOUNDATION

The "FRIENDS" of the Kappa Delta Rho Foundation are parents, relatives, and other non-members who support the Kappa Delta Rho Foundation.

Mr. & Mrs. Steven L. Aaron
Ms. Cindy Allgood
Mr. & Mrs. Joseph Bailey
Mr. & Mrs. Douglas R. Black
Mr. & Mrs. Daniel Bower
Mr. & Mrs. Chris Chacona
Mr. & Mrs. Chi-Kay Cheung
Mr. & Mrs. Phillip Chirch
Mr. & Mrs. Dale V. Collins
Mr. & Mrs. Thomas M. De Rossi
Mr. John T. Farrell
Mr. John R. Freeman, Sr.
Mr. & Mrs. Gene Gaida, Jr.
Mr. & Mrs. Benedetto Giambrone
Ms. Joan Godwin
Mr. & Mrs. James R. Gollatz
Mr. & Mrs. James Gronquist
Mr. & Mrs. Peter L. Hernandez
Mr. & Mrs. Gregory B. Joslin
Mr. & Mrs. Phillip Kinney
Ms. Randi Levin
Mr. & Mrs. John R. Lippa
Mr. & Mrs. Peter McCandless
Mr. & Mrs. Michael A. McLain
Mr. & Mrs. Paul H. Merz
Mr. Bohdan Mizak
Mr. & Mrs. Leon Mohan
Mr. & Mrs. Robert E. Montgomery
Mr. & Mrs. Robert Platt
Ms. Margaret Quick
Mr. & Mrs. Joseph E. Rees
Mr. & Mrs. Gady Reinhold
Mr. & Mrs. Bruce Schultz
Mr. & Mrs. Robert H. Skomski
Mr. & Mrs. Robert K. Sullivan
Ms. Jeannine Vilamaa
Mr. & Mrs. Joseph Weis

1998-1999 FUND DRIVE

(July 1, 1998 – June 30, 1999)

TOTAL GIVING

\$334,478.35

\$95,528.84 RESTRICTED GIFTS
\$238,949.51 UNRESTRICTED GIFTS
from 1,319 donors

FOUNDER'S SOCIETY NEW MEMBERS

THE FOUNDER'S SOCIETY is the top donor recognition category of the Kappa Delta Rho Foundation. The Society has four levels within which it recognizes the unrestricted gifts of donors each year. We are very proud to recognize the many alumni each year who make very generous contributions to support the programs funded by the Foundation.

There are several levels of giving recognition with the Founder's Society: Benefactor, \$1,000 - \$2,499; Philanthropist, \$2,500 - \$4,999; Patron, \$5,000 - \$9,999; and Grand Patron, \$10,000 or more.

We proudly recognize the following new members of the Founder's Society since the last publication of the *Quill and Scroll*.

Walter R. Stillman, Beta '56. (Benefactor)
Bob is a 1956 graduate of the Beta Chapter at Cornell University. Bob is a retired car dealer and lives in Vermont with his wife.

Michael A. McCarthy, Beta '57 (Benefactor)

Mike is a 1957 graduate of the Beta Chapter at Cornell University. Mike is a retired architect and partner with Skidmore, Owings and Merrill in New York. He resides in Manhattan.

John R. Padget, Beta '58 (Patron)

John is a 1958 graduate of the Beta Chapter at Cornell University. John is a semi-retired venture capitalist with Padget Associates, B.V. in Amsterdam. He spends much of his time in Amsterdam and Florida.

Robert Swinney, Sigma '58 (Benefactor)

Bob is a 1958 graduate of the Sigma Chapter at Oregon State University. Bob is retired from Colgate-Palmolive Corporation. He and his wife Ruth split their time between New Jersey and their farm in Virginia. Bob serves the Fraternity as the president of the board of directors.

James Hubbard, Psi '66 (Benefactor)

Jim is a 1966 graduate of the Psi Chapter at Lycoming College. He is an attorney and is the chief of staff for the Mercury Marine Division of Brunswick Corporation. He resides with his wife in Fond-du-lac, Wisconsin.

The Foundation is pleased to recognize all those alumni who joined, or renewed their membership in the Founder's Society in the fiscal year ending June 30, 1999.

BENEFACTOR (\$1,000 - \$2,499)

David C. Ruberg, Alpha '68
Robert P. Youngman, Alpha '64
Robert D. Corrie, Beta '53
Thomas S. Loane, Beta '67
Michael A. McCarthy, Beta '57
Walter R. Stillman, Beta '56
Paul A. Downes, Gamma '68
George A. King, Delta '81
S. Carlisle Botts, Epsilon '30
James D. Kowalski, Epsilon '57
David R. Hamrick, Zeta '57

William J. Paris, Eta '87
John C. Carl, Theta '51
V. Richard Miller, Theta '63
George J. Peer, Theta '45
John R. Behrmann, Iota '58
Gary J. Buchmann, Iota '79
Robert D. Lynd, Iota '67
Frank E. Thomas, Kappa '52
Ray C. Hunt, Rho '53
Richard D. Kline, Rho '61
Howard A. Rubin, Rho '77
Loran L. Stewart, Sigma '32
Robert L. Swinney, Sigma '58
James C. Hubbard, Psi '66

PHILANTHROPIST (\$2,500 - \$4,999)

James H. Buterbaugh, Zeta '55
Thomas C. Lockwood, Nu '56

PATRON (\$5,000-\$9,999)

John R. Padget, Beta '58

GRAND PATRON (\$10,000 OR MORE)

Lee H. Idleman, Iota '54
Andrew F. Barth, Nu Alpha '83

SPECIAL RECOGNITION GROUPS

UNRESTRICTED GIVING

GIDEON RUSSELL NORTON SOCIETY (\$750 - \$999)

Douglas M. Rammel, Pi Alpha '90

CHESTER MONROE WALCH SOCIETY (\$500 - \$749)

Raymond B. Strong, Alpha '91
Howard F. Crumb, Beta '53
Bruce L. Davis, Beta '60
Fred O. Cook, Theta '63
John Doddridge, Theta '61
Peter W. Strong, Theta '49
Ronald F. Martin, Lambda '58
Lawrence L. Swearingen, Nu '64
Edward B. Curtis, Rho '62
Glenn G. Miller, Alpha Alpha '61
Roderick B. Covlin, Nu Alpha '96
Mark S. West, Upsilon Alpha '88

GINO ARTURO RATTI SOCIETY (\$250 - \$499)

Roy P. Allen, Beta '56
Scott A. Bailey, Zeta '69
John E. Booth, Zeta '51
Thomas R. Jensen, Zeta '50
R. Marshall Phillips, Zeta '60
P. Duane Walker, Zeta '53
Robert M. Mitchell, Eta '38
Timothy F. Moore, Eta '68
Arthur S. Nelson, Eta '32
Anthony R. Pasquinelli, Eta '56
V. Thomas De Ville, Theta '62
David W. Morley, Theta '65
Gerald L. Murray, Theta '66
Edward K. Hoffman, Iota '68
Roy P. Jackman, Iota '49
Elmer E. Naugle, Iota '50
William M. Goodwin, Nu '61
Donald K. Wemlinger, Nu '66
Andrew P. Kail, Rho '91
Robert J. Sinclair, Rho '54
John J. Zureck, Beta Alpha '63
John F. Kiernan, Nu Alpha '83
Jerald Katcher, Pi Alpha '89
Christopher B. Miller, Tau Alpha '97
Brian M. Nolan, Epsilon Beta '89
Michael A. Petruzzelli, Theta Beta '88

Raphael E. Isaac, Iota Beta '91
J. Hall Jones, Lambda Beta '91

CENTENNIAL SOCIETY (\$100 - \$249)

R. Christian Anderson, Alpha '40
Scott H. Buzby, Alpha '51
Richard W. Cushing, Alpha '35
Scott E. McElroy, Alpha '87
John A. Moser, Alpha '61
R. Dario Quiros, Alpha '61
Harry Rossi, Alpha '43
G. Crossan Seybolt, Alpha '77
Larry E. Silvester, Alpha '63
John G. Youngman, Alpha '90
Bert C. Amidon, Beta '59
Gordon R. Dennis, Beta '54
Henry F. Doerge, Beta '55
Paul W. Feeney, Beta '55
John S. W. Gee, Beta '87
Richard L. Haner, Beta '53
David J. Harding, Beta '72
Ralph L. Higley, Beta '30
Cortland P. Hill, Beta '61
Victor F. Janas, Beta '78
Cornelius C. Jones, Beta '53
David L. Ladd, Beta '58
Dale S. Lazar, Beta '74
Jay D. Luft, Beta '79

John C. Morris, Beta '55
James A. Oest, Beta '31
Bruce W. Saunders, Beta '61
Shaun A. Seymour, Beta '56
Michael A. Sopchak, Beta '72
Romualdas Sviedrys, Beta '61
Robert W. Terry, Beta '59
John F. Wager, Beta '33
Curtis M. Walborn, Beta '76
James J. Whalen, Beta '57
Bruce A. Whilton, Beta '58
Harlan B. Williams, Beta '88
Curtis L. Pfaff, Gamma '48
Edward H. Dickson, Delta '40
John S. Goodreds, Delta '56
Paul B. Ingrey, Delta '61
Ellsworth P. Johnson, Delta '44
Samuel E. Phillips, Delta '40
John S. Rothschild, Delta '49
Gregg R. Steamer, Delta '74
Charles E. Benson, Epsilon '60
David R. Coffin, Epsilon '68
Arch C. West, Epsilon '36
David K. Wilkinson, Epsilon '52
John J. Borbee, Zeta '84
Dennis P. Bowen, Zeta '60
James J. Bryja, Zeta '79
Robert T. Butler, Zeta '87

Paul F. Hummer, Zeta '63
 William L. Nichol, Zeta '59
 John C. O'Connor, Zeta '38
 Clayton F. Ost, Zeta '55
 Donald P. Phillips, Zeta '57
 David W. Reese, Zeta '71
 William A. Siverling, Zeta '63
 Ronald L. Stief, Zeta '53
 Robert G. Thomas, Zeta '55
 Oscar C. Tissue, Zeta '51
 Raymond A. Cramer, Eta '50
 Arthur R. Gottschalk, Eta '49
 Randall D. Johnson, Eta '74
 Norman G. Kouba, Eta '54
 Richard L. G. Krajec, Eta '66
 Knud A. Larsen, Eta '30
 Donald R. Lathrop, Eta '53
 David C. Lauder, Eta '71
 Joseph D. Lezark, Eta '77
 Richard A. Miyazaki, Eta '84
 Randal C. Paniello, Eta '80
 David L. Rathgeb, Eta '73
 Robert D. Schutt, Eta '34
 Henry L. Uhlenhop, Eta '52
 Franklin J. Vernon, Eta '34
 Stanley W. Woods, Eta '58
 Urban H. Anslinger, Theta '48
 J. Gregory Carl, Theta '80
 William L. Coorsh, Theta '78
 Arnold E. Denton, Theta '49
 William A. French, Theta '51
 Richard G. Graves, Theta '55
 Robert C. Griffin, Theta '50
 Charles P. Hendricks, Theta '56
 Robert L. Huxtable, Theta '56
 Robert K. Jolls, Theta '41
 James W. Jones, Theta '92
 Robert W. Kropf, Theta '48
 Roger D. Lapp, Theta '62
 Edwin C. Leonard, Theta '62
 Edward Marashlian, Theta '86
 George S. Peck, Theta '40
 Robert Ronksley, Theta '47
 John H. Shafer, Theta '50
 Wayne M. Sieron, Theta '65
 Robert W. Stalker, Theta '52
 Werner C. Triftshouser, Theta '56
 Kenneth W. Wysong, Theta '29
 Scott A. Alfieri, Iota '94
 David C. Ballard, Iota '71
 Charles W. Berger, Iota '75
 George F. Blades, Iota '54
 Garland Boothe, Iota '84
 Kenneth R. Coulter, Iota '92
 James A. Kellogg, Iota '62
 Richard H. Leirer, Iota '66
 John G. Lore, Iota '67
 Alexander McClinchie, Iota '64
 John V. Melick, Iota '93
 Walter A. Molawka, Iota '71
 Angelo J. Pegno, Iota '53
 William D. Schaeffer, Iota '70
 John P. Tracey, Iota '96
 Robert Clouse, Kappa '52
 Thomas A. Fawcett, Kappa '57
 Peter C. Gallagher, Kappa '52
 Alan T. Lord, Kappa '72
 Donald L. McDowell, Kappa '57
 Harold R. Roe, Kappa '53
 Stephen E. Sinkey, Kappa '76
 Rudolph J. Tekaucic, Kappa '60

Max C. Weaver, Kappa '36
 W. Drew Chick, Lambda '34
 Richard G. Davis, Lambda '65
 Vance D. Lewis, Lambda '33
 William D. Sharon, Lambda '67
 Robert A. Shortt, Lambda '83
 Alan R. Talt, Lambda '51
 Lawrence C. Varellos, Lambda '80
 Byron C. Coats, Mu '32
 Wilbur J. Myers, Mu '32
 R. Michael Barnard, Nu '64
 Edward S. Beach, Nu '69
 Kenneth A. Beckley, Nu '62
 Stephen R. Branam, Nu '69
 John R. Dragoo, Nu '48
 William R. Fox, Nu '55
 Timothy G. Gardner, Nu '86
 Robert B. Grousd, Nu '55
 James R. Hetherington, Nu '53
 Richard O. Jones, Nu '64
 Thomas V. McComb, Nu '59
 Thomas M. McGlasson, Nu '65
 George W. Neal, Nu '57
 James R. Oliver, Nu '89
 Wayne C. Ponader, Nu '53
 Lowell L. Strawser, Nu '66
 Linwood E. Palmer, Xi '42
 William F. Hartman, Pi '70
 Robert L. Klinedinst, Pi '47
 John E. Parker, Pi '68
 William C. Pursch, Pi '60
 James M. Anderson, Rho '63
 David T. Clark, Rho '68
 Russell V. Davis, Rho '64
 Thomas R. Dougherty, Rho '65
 John A. Falcone, Rho '60
 Henry A. Lee, Rho '51
 William C. McNeill, Rho '31
 Richard E. Mueller, Rho '69
 Charles E. Peterson, Rho '69
 John K. Powell, Rho '72
 David M. Reed, Rho '73
 William C. Richtmyre, Rho '42
 Curtis K. Smith, Rho '67
 H. Alan Vasoli, Rho '55
 John J. Walsh, Rho '86
 Gerald I. Wilson, Rho '60
 Alvin L. Butler, Sigma '63
 Verl L. Holden, Sigma '53
 Lester O. Matthews, Sigma '25
 Kenneth L. McGinnis, Sigma '65
 Mark S. Pfister, Sigma '84
 Randal S. Saunders, Sigma '79
 Keith F. Young, Sigma '49
 George F. Zimmer, Sigma '69
 Darin K. H. Mar, Tau '87
 Richard C. Stoner, Upsilon '50
 Maurice Berger, Phi '52
 David M. Bliley, Psi '62
 James F. Edgeworth, Psi '56
 William H. Gallagher, Psi '57
 Roger B. Ludlum, Psi '53
 Guyton F. Giannotta, Omega '72
 Patrick B. Mikesell, Omega '62
 Timothy G. Rupert, Omega '68
 Edward L. Bowes, Alpha Alpha '63
 Richard DeBernardo, Alpha Alpha '75
 James P. Murphy, Alpha Alpha '59
 Dennis L. Ritchey, Alpha Alpha '89
 Frank W. Harris, Beta Alpha '65
 Robert C. Higgins, Beta Alpha '66

Frank S. Ioppolo, Beta Alpha '63
 James M. Leclair, Beta Alpha '66
 Richard E. Kurz, Gamma Alpha '68
 David L. McLuckie, Gamma Alpha '71
 Steven Schilson, Gamma Alpha '65
 Mark P. Bula, Eta Alpha '89
 Robert W. Cooper, Eta Alpha '88
 Bradley K. Shoff, Eta Alpha '87
 David V. Trapani, Iota Alpha '84
 Brian J. Winters, Iota Alpha '88
 Douglas E. Goss, Kappa Alpha '85
 Daniel R. Rendino, Kappa Alpha '72
 Jason S. Salegna, Lambda Alpha '97
 Patrick M. Settemire, Lambda Alpha '87
 Peter R. Acocella, Nu Alpha '83
 Richard C. Oh, Nu Alpha '83
 Michael J. Kiernan, Omicron Alpha '86
 Eric D. Barbe, Pi Alpha '87

Chadwick A. Rupp, Pi Alpha '94
 Erik A. Covitz, Sigma Alpha '87
 Douglas M. Miller, Tau Alpha H
 Mike F. Kazzie, Upsilon Alpha '86
 Michael D. Schelonka, Upsilon Alpha '91
 Earl W. Stolz, Upsilon Alpha '92
 Wayne R. Lewandowski, Chi Alpha '88
 David A. Graves, Psi Alpha '89
 James D. Carroll, Alpha Beta '93
 Brian H. MacNeil, Epsilon Beta '87
 Howard A. Fidler, Eta Beta '92
 Noel T. Aird, Iota Beta '91
 Brian J. Stumm, Iota Beta '92
 Ryan B. Schoenfeld, Lambda Beta '95
 Jonathan Hotz, Mu Beta '94
 Brian S. Keller, Mu Beta '92
 Michael W. Rogers, Tau Beta '94

RESTRICTED GIFTS

GORDON AND CLARE JOHNSON ANNUITY TRUST

Susan Johnson Willey, Daughter

COMMERFORD B. MARTIN ENGINEERING SCHOLARSHIP FUND

Madeline Martin, Widow

WALLY MILLER MEMORIAL SCHOLARSHIP

Robert D. Corrie, Beta '53
 Scott A. Bailey, Zeta '69
 William J. Paris, Eta '87

HORACE E. SHACKLETON MEMORIAL SCHOLARSHIP FUND

Robert D. Corrie, Beta '53

STEVEN S. HANSEN MEMORIAL SCHOLARSHIP FUND

Larry T. Harada, Beta '79
 Richard R. Gans, Beta '80
 David R. May, Beta '80
 Scott A. Crego, Beta '86
 Jeffrey T. Anbinder, Beta '94
 Brian M. Sagrestano, Beta '92
 Stephen T. Dewey, Beta '97
 Michael E. Van Brunt, Beta '97

NU CHAPTER SCHOLARSHIP FUND

Mark N. Lundgren, Nu '70

RHO CHAPTER ALUMNI ENDOWMENT SCHOLARSHIP FUND

Edward B. Curtis, Rho '62
 John C. Ludlum, Rho '35
 John R. Probert, Rho '37
 Rho Alumni Corporation

RHO CHAPTER ALUMNI UNRESTRICTED SCHOLARSHIP FUND

Rho Alumni Corporation

RHO CHAPTER SCHOLARSHIP FUND

Mark N. Lundgren, Nu '70

ENDOWMENT GIFTS

G. Crossan Seybolt, Jr., Alpha '77
 Robert P. Youngman, Alpha '64
 Robert D. Corrie, Beta '53
 Ralph L. Higley, Beta '30
 David B. Mitchell, Beta '58
 S. Carlisle Botts, Epsilon '30
 David R. Hamrick, Zeta '57
 Wesley L. Litzinger, Zeta '73
 William L. Nichol, Zeta '59
 Thomas M. Skafidas, Eta '74
 John C. Carl, Theta '51
 Rudolph J. Tekaucic, Kappa '60
 Hubert W. Gouldthorpe, Mu '27
 William M. Goodwin, Nu '61
 Richard O. Jones, Nu '64
 Thomas C. Lockwood, Nu '56
 Mark N. Lundgren, Nu '70
 Randall S. Saunders, Sigma '79
 Robert L. Swinney, Sigma '58
 Andrew F. Barth, Nu Alpha '83
 David K. Bernstein, Omicron Alpha '88
 Douglas M. Rammel, Pi Alpha '90
 Peter Byrne, Tau Alpha '88
 Christopher B. Miller, Tau Alpha '97
 Mark S. West, Upsilon Alpha '88
 Joshua L. Smith, Alpha Beta '93
 Christopher K. Gordon, Zeta Beta '95
 J. Hall Jones, Lambda Beta '91
 Jay Johnson, Omega Beta '99

FOUNDATION CONTRIBUTIONS BY CHAPTER

ALPHA AND KAPPA DELTA RHO SOCIETY ALPHA CHAPTER MIDDLEBURY COLLEGE \$7,598

Philip L. Carpenter '33
Richard W. Cushing '35
A. Richard Chase '36
Paul W. Foster '37
Robert S. Jewett '38
Russell A. Norton '38
Henry M. Richardson '38
William T. Watt '39
R. Christian Anderson '40
Frederick J. Grab '40
Stephen H. Arnold '41
Clifford W. Fulton '42
Roger L. Easton '43
Harry Rossi '43
Lewis G. Ensinger '44
Jean S. Hebert '44
William D. Neale '44
John A. Moriarty Sr. '45
Scott H. Buzby '51
James W. Kitchell '51
Curtis B. Norris '51
Ferdinand Wyckoff Jr. '54
J. Arnold Bielby Jr. '59
John A. Moser '61
R. Dario Quiros '61
Larry E. Silvester '63
Robert J. Baskin '64
Robert P. Youngman '64
Robert C. Hall '65
Peter L. Feldman '67
David C. Ruberg '68
R. Glen Wehrwein '68
Robert K. Blackwell '70
Peter T. Stewart '71
David D. Steece '72
Wayne E. Walch '73
John J. Kalbacher '75
Stephen A. Tripp '76
G. Crossan Seybolt Jr. '77
Gregory R. Bizzozero '86
Scott E. McElroy '87
Stephen A. Feldman '88
John G. Youngman '90
Raymond B. Strong III '91
Gregory J. Hanson '92
Christine E. Waasdorp '94
Matthew C. Hamilton '95
Kelsey C. Fuller '96

BETA CORNELL UNIVERSITY \$24,997.24

Ralph L. Higley '30
James A. Oest '31
Mrs. Commerford B.
Martin (Widow) '33
John F. Wager Jr. '33
Norbert A. Lasher '39
Edmund C. Wanner '39
Charles C. Maynard '40
James L. Rose '40
Roy E. W. Herrmann Jr. '43
Merton M. Pultz '43
Robert W. Neureuter '45
Robert D. Corrie '53
Howard F. Crumb '53
Richard L. Haner '53
Cornelius C. Jones '53
Albert H. Packer '53
Gordon R. Dennis '54
Henry F. Doerge Jr. '55
Paul W. Feeney '55
John C. Morris Jr. '55
Roy P. Allen '56
Albert G. Boos II '56
Shaun A. Seymour '56

Walter R. Stillman '56
Michael A. McCarthy '57
Robert W. Thomas '57
James J. Whalen '57
Frederick W. Drewes '58
David L. Ladd '58
David B. Mitchell '58
John R. Padgett '58
Bruce A. Whilton '58
Bert C. Amidon '59
Frederick W. Bisbee '59
Leslie R. Doerschug '59
Robert W. Terry '59
Bruce L. Davis '60
Cortland P. Hill '61
Robert H. Peterson Jr. '61
Bruce W. Saunders '61
Romualdas Sviedrys '61
Randall K. Cole Jr. '63
Richard G. Jackson '63
Robert W. Shaw Jr. '63
J. Walter Streett '63
William H. MacInnis '64
Kenneth Lerman '66
John G. Miers '66
Thomas S. Loane '67
Richard L. McKee '67
Gerald G. Bowen Jr. '70
David J. Harding '72
Dean B. Livingston '72
William E. Rau '72
Philippe G. Savary '72
Michael A. Sopchak '72
Scott D. Thyng '72
Richard C. Bower '73
Wesley A. Clark '73
Charles H. Fowler '73
Jonathan M. Kaplan '73
Dale S. Lazar '74
William M. Ackerman '75
Robert R. Saltzman '75
John H. Humpton III '76
William D. Munch '76
Curtis M. Walborn '76
Storm E. Kildoye '77
Victor F. Janas '78
Larry T. Harada '79
Jay D. Luft '79
John A. Reed '79
Richard R. Gans '80
David R. May '80
William M. Hughes '82
John R. Hunsinger '84
Blaise P. Vitale '84
Evan B. Brody '86
Scott A. Crego '86
John S. W. Gee '87
Harlan B. Williams Jr. '88
Brian W. Apgar '92
Brian M. Sagrestano '92
Jeffrey T. Anbinder '94
Allan W. Porowski '94

David J. Yonce '94
Aaron F. Hunt '95
Jason H. Biegelson '96
Daniel LaPlaca '96
Stephen T. Dewey '97
Nathaniel B. Forman '97
Michael E. Van Brunt '97
Jeffrey L. Shapiro '99
David S. Craine '01
Jeffrey J. Harradine '01

GAMMA S.U.N.Y. ALBANY \$3,050

Hamilton Acheson '31
Robert E. Goodrich '32
Frank J. McFarland '33
Roger W. Bancroft '34
Wilfred P. Allard '35
George E. Decker '36
Harold A. Haynes '38
Joseph Leese '39
Robert T. Carr '42
Robert A. Leonard '43
William K. Phipps '43
Richard S. Beach '48
Curtis L. Pfaff '48
Donald C. Hoyt '50
Gerard R. Brophy '51
Alan R. Stephenson '52
Naoshi Koriyama '54
Richard E. Wagner '54
Anthony T. Amelio '60
Paul A. Downes '68

DELTA COLGATE UNIVERSITY \$3,434.51

Robert B. Ainslie '33
Willard N. Woodward '36
Edward M. Darrow '37
Edward H. Dickson '40
Samuel E. Phillips Jr. '40
John G. Chiera '41
Lawrence F. Barr '42
Donald E. Colburn '42
Jack F. Sinn '43
William C. Brigham '44
Ellsworth P. Johnson '44
Donald C. Bryden '46
John S. Rothschild '49
Thomas C. Wilson '49
Charles P. Powell '50
Howard E. Sutliff '50
Richard L. Naeye '51
David A. Reynolds '51
James C. Tomasi '51
Herbert A. Dietzel '52
Nicholas A. Orsini '52
Seymour L. Ellison '53
Paul J. Quigley '54
John P. Wait '54

John S. Goodreds '56
H. Paul Mosher '56
Harvey M. Lincoln '58
Craig M. Ferguson '59
Ronald G. Blasberg '61
J. David Gaines '61
Paul B. Ingrey '61
George J. Terra-Nova '62
Ronald J. Taylor '63
William M. Thompson '65
Stanley W. Chapman '68
Peter H. Sterenberg '69
Alan S. Anderson '70
Robert L. Glendening '71
Gregg R. Steamer '74
Thomas E. Burton '75
David R. Hoelzer '75
Gary Kissin '76
George A. King '81
N. John Torres '85

EPSILON FRANKLIN COLLEGE \$10,036.00

S. Carlisle Botts '30
Arch C. West '36
Myron C. Knauff '41
Albert W. Porter '41
Robert F. Volland '43
H. George Hamacher '48
Robert B. Francis '50
Frank K. Martin '52
Henry F. Steinkamp '52
David K. Wilkinson '52
Rodger L. Murray '56
James D. Kowalski '57
Charles E. Benson '60
Jon C. Geuder '64
Gordon A. Bardos '65
David R. Coffin '68
William J. Deubel '70
David E. Overmyer '70
Noel A. Thomas Jr. '70
Glenn H. Deming '71
Michael F. Petti '71
James B. Davidson '72
D. Kirt Verhagen '82
Kevin D. Elmore '85
Stephen J. Harants '91
Brian K. Alsip '01

ZETA PENN STATE UNIVERSITY \$13,276.21

Harry H. Yates '31
John C. O'Connor '38
William R. Fuchs '41
Anson C. Burwell Jr. '42
William A. Calvert Jr. '44
Warren L. Davies '46
George Ogden '46
William A. Vernon '48
Daniel E. Winslow Jr. '48
Lloyd R. Amprim '50
Thomas R. Jensen '50

Ronald J. Messersmith '50
Edwin F. Meyers '50
Raymond V. Ulinski '50
John E. Booth '51
Eugene C. Magill '51
Oscar C. Tissue Jr. '51
Robert E. Miller '52
Vincent I. Purcell '52
Earl H. Grissinger '53
John E. Megles '53
Ronald L. Stief '53
P. Duane Walker '53
R. Merl Hess '54
Allan J. Ofensend '54
James H. Buterbaugh '55
Bernard H. Carson '55
Thomas R. Dolan '55
John Mallick '55
Clayton F. Ost '55
Robert G. Thomas '55
Manuel Tubella Jr. '55
Albert B. Wrigley '55
Blaine D. Barron '57
David R. Hamrick '57
Donald P. Phillips '57
Daniel E. Long Jr. '58
Patrick J. Rielly '58
Joseph W. Corini '59
James A. Morgart '59
William L. Nichol '59
Dennis P. Bowen '60
R. Marshall Phillips '60
Darell L. Roberts '62
Paul F. Hummer II '63
John R. Kosko '63
William A. Siverling '63
Richard J. Schinagl '65
Charles R. Six '65
Dennis N. Stanz '65
William H. Albinson '66
William F. Covolus '66
Robert J. Gill '66
E. David Harr '66
Scott A. Bailey '69
Daniel L. Bergey '70
William F. Donadec '70
Samuel M. Mecum '70
Kurtis B. Berry '71
David W. Reese '71
Robert W. Schilling '72
Wesley L. Litzinger '73
John W. Thomas '73
Michael N. Sowko '75
Alexander E. Lewis '77
Michael S. Cover '78
David A. Driscoll '78
Stephen S. Waddell '78
James J. Bryja '79
Jay P. Edmunds '79
Michael Arena '80
Lyle K. Beckwith '81
Robert V. Brown '81
Kevin Krevda '81
Matthew D. Glass '83
John J. Borbee '84
Mark C. Capone '84
Robert T. Butler '87
George E. Barilaro '88
Michael D. Leppo '95

Raymond A. Cramer Jr. '50
Richard A. Naatz '50
Paul C. Sisco '50
Henry L. Uhlenhop Jr. '52
Donald R. Lathrop '53
John G. Powell '53
William H. Holden Jr. '54
Norman G. Kouba '54
Robert D. Jacobson '56
Anthony R. Pasquinelli '56
Gale L. Shillington '57
Robert F. Troy '57
Stanley W. Woods Jr. '58
Patrick R. Murphy '62
Frederick S. Roland '62
James E. Robertson '63
Lawrence D. Muller '64
Douglas L. Garwood '66
Richard L. G. Krajec '66
John W. Kapala '68
Timothy F. Moore '68
Robert M. Bordeaux '69
John A. Barra '71
David C. Lauder '71
Ernest A. Sammann '71
Frank W. Czaja '72
Kenneth J. Krynicky '73
David L. Rathgeb '73
Randall D. Johnson '74
Thomas M. Skafidas '74
Mark S. Dills '76
William F. Kottas '76
Joseph D. Lezark '77
Bruce S. Aupperle '78
Douglas K. Jackson '78
Perry A. Johnson '78
Dale W. Schaffacker '78
Bobby G. McCormick '79
Leslie W. Auxier '80
Robert W. Behle '80
Randal C. Paniello '80
William P. Zorc '80
John C. Hill '81
Edward A. McVey '83
William J. Armbruster '84
Jeffrey S. Hersh '84
Richard A. Miyazaki '84
David A. Swanson '84
Michael S.
Cunningham '86
William J. Paris '87
Michael E. Mueller '95
Alfred C. Mueller '96
James R. Love '99
Christopher A. Askew '00

THETA PURDUE UNIVERSITY \$29,034.47

James W. Barany '00
Kenneth W. Wysong '29
Milton L. Mills '31
Arthur M. White '34
George A. Sweigart '35
James B. Kirkpatrick '38
William M. Steinfeldt '38
George S. Peck '40
Robert K. Jolls '41
Herbert F. Zinsmeister '44
George J. Peer '45
Ernest J. Fischer '46
Cecil E. Evans '47
Richard D. Kentner '47
Robert Ronskley '47
Urban H. Anslinger '48
Robert A. Hassler '48
Robert W. Kropf '48
Arnold E. Denton '49
John R. Gray '49
Peter W. Strong '49
Roger W. Walker '49
Don A. Doud '50
Robert C. Griffin '50
John H. Shafer '50

TOP TEN CHAPTERS BY CONTRIBUTIONS

Unrestricted giving

1. BETA (CORNELL UNIVERSITY)	\$17,057.24
2. NU ALPHA (COLUMBIA UNIVERSITY)	16,185.00
3. THETA (PURDUE UNIVERSITY)	11,320.72
4. RHO (LAFAYETTE COLLEGE)	10,976.71
5. ZETA (PENN STATE UNIVERSITY)	10,101.21
6. IOTA (BUCKNELL UNIVERSITY)	7,611.00
7. NU (INDIANA UNIVERSITY)	7,599.44
8. ETA (UNIVERSITY OF ILLINOIS)	6,515.00
9. ALPHA (MIDDLEBURY COLLEGE)	4,758.00
10. SIGMA (OREGON STATE UNIVERSITY)	4,353.00

ETA UNIVERSITY OF ILLINOIS \$9,015.00

Knud A. Larsen III '30
Howard F. Brown '31
Arthur S. Nelson '32
Max K. Eno '33
Robert D. Schutt '34
Franklin J. Vernon '34
Ralph F. Haag '38
William W. Locke '38
Robert M. Mitchell '38
Clarence L. Dunn '47
Arthur R. Gottschalk '49

TOP TEN CHAPTERS BY CONTRIBUTORS

Unrestricted giving

1. THETA (PURDUE UNIVERSITY)	95
2. BETA (CORNELL UNIVERSITY)	94
3. RHO (LAFAYETTE COLLEGE)	92
4. IOTA (BUCKNELL UNIVERSITY)	80
5. ZETA (PENN STATE UNIVERSITY)	76
6. NU (INDIANA UNIVERSITY)	74
7. ETA (UNIVERSITY OF ILLINOIS)	62
8. LAMBDA (UNIVERSITY OF CALIFORNIA, BERKELEY)	48
9. KAPPA (OHIO STATE UNIVERSITY)	47
10. SIGMA (OREGON STATE UNIVERSITY)	47
10. ALPHA (MIDDLEBURY COLLEGE)	45

Philip R. Wilson '50
J. William Benson '51
John C. Carl '51
William A. French '51
Paul D. Douglas '52
Alfred C. Kaser '52
Robert W. Stalker '52
Daniel P. Nesbitt '54
John D. Reed '54
Daniel G. Sellers '54
Andrew W.
Smithberger '54
William W. Brant '55
Richard G. Graves '55
John D. Winters Jr. '55
Maurice E. Hamilton '56
Charles P. Hendricks '56
Robert L. Huxtable '56
Werner C. Trifftshouser '56
Robert H. Christie Jr. '58
Merton A. Rumford '58
James W. Graves '59
Walter J. Burr '60
H. Louis Gurthet '60
William F. Marks '60
Bernard L. Murphy '60
Thomas L. Scoopmire '60
Thomas J. Shideler '60
John Doddridge '61
John M. Geshkewich '61
Tony J. Schmeltz '61
V. Thomas De Ville '62
Thomas L. Guthrie '62
Curtis H. Heaton '62
Daniel R. Johnsen '62
Roger D. Lapp '62
Edwin C. Leonard '62
Thomas J. Aylward '63
Fred O. Cook '63
V. Richard Miller '63
Dennis M. Ring '63
David W. Morley '65
James W. Prech '65
William J. Rippe '65
Wayne M. Sieron '65
Philip D. Stinson '65
Albert S. Henderson '66
Gerald L. Murray '66
Richard L. Seibel '66
Joseph M. Illingworth '68
Stephen C. Hoffman '69
Robert W. Plummer '69
Clinton Heyd III '72
David P. Whipple '72
Chris R. Bahler '73
Craig S. Reber '73
Neil W. Reber '75
Douglas H. Close '76
Douglas C. Edwards '76
T. Terry Tousey '77
William L. Coorsh '78
Larry R. Gamblin '79
J. Gregory Carl '80
Daniel B. Johnson '82

Edward Marashlian '86
Phillip J. Reber '86
Bradley K. Davis '87
Kevin E. Boyle '88
Garrett F. Koss '90
Jeffrey W. Tucker '90
Alan M. Hatch '92
James W. Jones '92
Chad T. Peck '97
Bimal N. Saraiya '00
Ryan E. Snider '01

IOTA BUCKNELL UNIVERSITY \$95,136.00

John L. Bergen '35
George M. Craig '38
John C. Nixon '40
William Kresge '41
Maurice P. Longo '41
Harry H. Powell Jr. '47
Harvey P. Huber '48
Brian M. Sword '48
Sherman A. Herman '49
Roy P. Jackman '49
William W. Bell Jr. '50
Elmer E. Naugle '50
William G.
Hendrixson '52
Angelo J. Pegno '53
George F. Blades '54
Lee H. Idleman '54
Thomas H. Miller '55
Michael Zaparyniuk Jr. '55
Glenn C. Wightman '56
Ted Kullen '57
John R. Behrmann '58
Robert H. Raymond '60
Robert C. Hardy '61
Kenneth W. Lackie '61
Larry L. Erdley '62
James A. Kellogg '62
Michael S. Davis '64
Lionel S. Frank Jr. '64
Alexander McClinchie III '64
John R. Hogan '65
Richard H. Trefflich '65
Lawrence N. Gardner '66
Richard H. Leirer '66
Edward J. Lubitz '66
John G. Lore '67
Robert D. Lynd '67
Carl O. Reitz Jr. '67
Herbert T. Fitch '68
Edward K. Hoffman Jr. '68
Richard C. Reeve '68
Kent W. Avery '69
Ross C. Loeser '69
Kenneth R.
Stubenrauch '69
William D. Schaeffer Jr. '70
Thomas R. Spitzer '70
David C. Ballard '71

Mark C. Gebhardt '71
Walter A. Molawka Jr. '71
Thomas J. Lewis III '74
Stephen R. Watt '74
William W. Werther '74
Charles W. Berger '75
Mark B. E. Stephanou '75
Bruce R. Van Allen '75
Warren Messerschmidt Jr. '76
Eugene L. Spencer '76
Gary J. Buchmann '79
Arthur E. Copoulos '80
Edward W. Dadez '80
Keith F. Rozolis '81
Wayne C. Schairer '82
Garland Boothe III '84
Stephen R. Knapp '84
Steven M. Medoff '84
Frederick J. Roeper '86
Richard C. Bean Jr. '88
Jason L. Branker '88
John K. Musgrave IV '88
Jeffrey S. Whitcomb '91
Kenneth R. Coulter Jr. '92
Daryl S. Hodgkinson '92
John V. Melick '93
Scott A. Alfieri '94
D. Kyle Morris '95
David B. Scranton '96
John P. Tracey '96
Derek W. Byron '97
Luis Felipe Carvajal '97
Jason Junge '98
Joseph I. Marchese '98
James T. McCarty '99
Chad D. Holden '00

KAPPA OHIO STATE UNIVERSITY \$5,139.00

Allen L. Shumard '30
Earl F. Williams '32
Paul L. Weller '35
Max C. Weaver '36
James F. Harrington '39
Donald L. Paris '39
Walter F. Garey '49
Vaughn Herbel '49
Ernest T. Palma '50
Donald M. Fodor '51
Mike Koval '51
Robert Clouse '52
Jack E. Dennison '52
Fred E. Eastman '52
Peter C. Gallagher '52
F. Paul Nestor '52
Dean T. Sangalis '52
Frank E. Thomas '52
Richard R. Kolp '53
Harold R. Roe '53
John C. Seitz '53
Charles Fleenor '55
Robert E. Walter '55

Thomas A. Fawcett '57
Donald L. McDowell '57
Lawrence O. Dussault '58
Edward M. Helal '59
Kenneth E. Hoeltzel '59
Roger R. Rush '59
Rudolph J. Tekaucic '60
Hans A. Schokatz '66
William G. Buchholz '68
Dennis C. Fleming '68
J. Richard Barth '69
James R. Goodrich Jr. '69
Richard A. Beck '70
David W. Magill '70
Alan T. Lord '72
Stephen C. Smith '73
Charles J. DeVirgilio '74
Paul A. Parks '75
Stephen E. Sinky '76

LAMBDA UNIVERSITY OF CALIFORNIA, BERKELEY \$7,840.00

Leonard J. Lepera '00
John G. Smale '24
Gordon G. Johnson '26
By Susan Johnson Willey,
Daughter
William W. Alving '33
Harold P. Knopp '33
Vance D. Lewis '33
W. Drew Chick Jr. '34
James W. Moon '35
Cyril B. Haworth '37
Theodore R.
Thompson '37
Robert H.
McPhillamey '39
Bruce T. Coggins '43
Jack W. Norris '44
Robert W. Houston '45
Richard A. Hickman '46
Hugh F. Ewing '49
Louis Raun-Linde '49
Donald L. Haworth '50
Robert P. Praetzel '50
Ronald W.
Hendrickson '51
Alan R. Talt '51
Donald L. Edgar J.D. '52
Robert L. Rose '52
Allen R. Whitsitt '52
Robert J. Roberts '53
Arthur F. Kirby '54
Michael N. de Soto '54
Norbert C. Babin '56
Ronald F. Martin '58
Donald D. Roberts '58
James G. Huseby '60
David P. Decarion '62
Robert C. Granville '62
William J. Morgan '62
Robert A. Goings Jr. '63
B. Kent Wood '63

Douglas J. Bell '64
Richard G. Davis '65
Ned T. Ryan '65
William D. Sharon '67
James A. Jarvis Jr. '68
Brann Johnson '68
Christopher Harley '74
John P. Fernbacher '79
Wilfred J. Fekeci '80
Lawrence C. Varellas '80
Robert A. Shortt '83

MU UNIVERSITY OF MICHIGAN \$1,353.00

Hubert W.
Gouldthorpe '27
Byron C. Coats '32
Wilbur J. Myers '32
Robert L. Boynton '37
Roland Savilla '40
Richard D. Boynton '42

NU INDIANA UNIVERSITY \$25,605.49

George E. Kirk '00
Herbert E. Farrell '44
George T. Orfanos '44
Stephen C. Chaleff '48
John R. Dragoo '48
Robert P. Heinz '48
Joseph E. Kriebel '49
James D. McConnell '49
Robert W. Risteen '49
J. Robert Alter '50
Robert B. Purdy '50
Robert C. Reising '51
James R. Hetherington '53
Wayne C. Ponader '53
Carter L. Hall '54
William R. Fox '55
Robert B. Grousd '55
Allen W. Koehlinger '55
Stanley C. Salomon '55
Thomas C. Lockwood '56
Larry S. Wood '56
Thomas E. Brethauer '57
George W. Neal '57
Emery E. Coon Jr. '58
Charles D. Hay '58
C. Bruce Hinton '58
James F. Koehlinger '58
Richard S. Wilson '58
James E. Hertling '59
Thomas V. McComb '59
Ronald L. Reinking '59
Richard E. Bishop '60
James D. Clements '60
Weldon H. Leimer '60
William M. Goodwin '61
Robert J. Musselman '61
James L. Babb Jr. '62
Kenneth A. Beckley '62
Charles E. Filippo '62

Gary L. Long '62
David M. Williams '62
Ronald K. Gehring '63
James A. Nelson '63
Edward A. Spray '63
R. Michael Barnard '64
Richard O. Jones '64
James H. Ramsey '64
Robert E. Schweitzer '64
Lawrence L.
Swearingen '64
Charles D. Vonesh '64
David R. Zaun '64
William P. Butz '65
Andrew J. Chmiel '65
Donald G. Loftus '65
Thomas M. McGlasson '65
Donald H. Miller '66
Lowell L. Strawser '66
Donald K. Wemlinger '66
Norman H. Babcock '67
George G. O'Malley '67
Richard H. Bogigian '68
Richard L. Edgington '68
Lawrence E. Shearer '68
Craig S. Thomson '68
Edward S. Beach '69
Stephen R. Branam '69
Robert A. Moynihan '69
Randel E. Trebing Jr. '69
Stephen L. Ernest '70
Mark N. Lundgren '70
Jon C. Smith '70
Edwin D. Miller '72
Douglas E. Otto '72
Richard P. Samek '73
Michael P. McAleavey '75
Brian K. Houlihan '76
Kevin C. Palmer '85
Timothy G. Gardner '86
Anthony M. Liali '87
James Craig Talbott '88
James R. Oliver '89
David S. Daniels '90
Gregory D. Gehring '94

XI COLBY COLLEGE \$667.00

Willard E. Alexander '31
George C. Putnam '34
Linwood E. Palmer Jr. '42
George H. Conley '44
Richard D. Goodridge '44
M. Cass Lightner '51
Richard B. Mack '51
Schuyler L. Mott '51
Maurice F. Ronayne '51
Howard H. Gaskill Jr. '52
Robert A. Cooke '53
Abbott E. Rice '54
Allen D. MacLean '57
Bruce W. Montgomery '59
John M. Whitier '60
Harvey A. Collins Jr. '68

TOP TEN CHAPTERS BY NUMBER OF CONTRIBUTORS

Includes both restricted and unrestricted gifts

1. THETA (PURDUE UNIVERSITY)	99
2. BETA (CORNELL UNIVERSITY)	94
3. RHO (LAFAYETTE COLLEGE)	93
4. NU (INDIANA UNIVERSITY)	83
5. IOTA (BUCKNELL UNIVERSITY)	81
6. ZETA (PENN STATE UNIVERSITY)	80
7. ETA (UNIVERSITY OF ILLINOIS)	65
8. SIGMA (OREGON STATE UNIVERSITY)	50
9. ALPHA (MIDDLEBURY COLLEGE)	48
10. LAMBDA (UNIVERSITY OF CALIFORNIA, BERKELEY)	45

William Agrella '71
Thomas C. Staples '78

**OMICRON
BUTLER UNIVERSITY**
\$50.00
W. Douglas Elwood '33

**PI
GETTYSBURG COLLEGE**
\$1,377.00
Charles F. Anderson '33
Robert L. Cook '41
Robert L. Klinedinst '47
Cody F. Burkindine Jr. '48
Richard E. Lippert '53
John J. Reilly '54
James M. Henderson Jr. '55
J. Norman Miller Jr. '55
Jaye R. Ryan '55
Charles P. Cable '56
Robert H. Boyer '60
William C. Pursch '60
Edmund M. Schneider '60
Herbert W. Hinning '61
G. David Deardorff '63
Lance G. Valt '64
James H. Honafius '65
Joseph E. Kelley III '65
Vincent Majkowski '65
John R. Nagle '65
Frederick W. Martin '66
James B. McLaughlin '66
Allen S. Gabroy '67
William R. Deisinger '68
John E. Parker II '68
William Stillgebauer '68
Brian J. Blood '70
William F. Hartman II '70
Ivan J. Punchatz '71

**RHO
LAFAYETTE COLLEGE**
\$39,395.75
Rho Alumni Corporation
Charles W. Zook '30
William C. McNeill '31
Ray R. Willauer '31
John C. Ludlum '35
Roland Raver '35
Roy H. Stedler Jr. '36
Earl S. Lathrop '37
John R. Probert '37
Robert H. B. Wade '37
John A. Snyder Jr. '41
Robert B. Howard '42
Arthur B. Hube '42

William C. Richtmyer '42
Gennaro W. Yannaccone '43
Walter Hardt '49
John K. McDonald '49
John G. Polivka '49
Robert C. Hamlyn '50
Cornelius J. Bruinooge '51
Henry A. Lee '51
Robert A. Reich '51
Harrison F. Wood '51
Thomas L. Jamison '52
Edward O. Woolridge '52
Ray C. Hunt Jr. '53
Robert B. Thompson III '53
Joseph F. Koegler '54
Robert J. Sinclair '54
H. Alan Vasoli '55
William P. Freese II '56
Harlow E. Waite '57
Fred C. Guest '59
Charles M. Puckette IV '59
Donald S. Straub '59
John A. Falcone '60
Richard R. Heisel '60
Duncan W. O'Dwyer '60
Gerald I. Wilson '60
David K. Bilheimer '61
Richard D. Kline '61
Edward B. Curtis '62
Charles R. Solomon '62
Paul S. Spiecker '62
James M. Anderson '63
James W. Marlatt '63
Gary A. Paton '63
Walter C. Beamer '64
Russell V. Davis '64
William J. Murdock III '64
Thomas R. Dougherty '65
James L. Terhune '65
Curtis K. Smith II '67
Mark A. Staples '67
Jeffrey P. Weaver '67
David T. Clark '68
Robert M. Rader '68
David R. Hughes Esq. '69
Richard E. Mueller '69
Charles E. Peterson III '69
Stephen P. Otway '70
Mark R. Whitley '70
Bruce E. Kleinert '71
John K. Powell Jr. '72
Gordon S. Anderson '73
David M. Reed '73
William R. Dodds Jr. '74
Charles W. Harrison '75
David P. Hourigan '75
Richard J. Gant '76
James A. Coccagna '77
Howard A. Rubin '77
Thomas O. Miller '78

J. Scott Watson '78
Lucky H. G. Yaple '78
Bradford K. Moger '80
James W. Williams III '80
Andrew S. Yaddoff '80
Lawrence L. Livornese '81
Michael J. Groman '86
John J. Walsh '86
Peter T. Holran '87
Jeffrey A. Nelson '89
Scott R. Wild '89
Douglas S. Brown '91
S. Scott Gates '91
Andrew P. Kail '91
Dennis P. Rodano Jr. '91
Marc J. Gallagher '93
Ronald G. Clark Jr. '97
Darryl B. Lee '97
Seth M. Marlatt '98
Lachlan W. McLean '98

**SIGMA
OREGON STATE UNIVERSITY**
\$9,983.00
Lester O. Matthews '25
Loran L. Stewart '32
Robert E. Blasen '33
Alphons R. Melis '38
Faye H. Stewart '38
Roscoe I. Conn '39
Everett W. Holstrom '39
George Y. Harry III '40
Charles W. Pitkin Jr. '46
Lyle T. Lindsay '47
Lawrence R. Barnes '49
Harold K. Meyers '49
Keith F. Young '49
James G. Hobson '50
John R. McClure '50
George R. McCormick '50
Emanuel C. Zografos '50
William C. Moller '52
Robert D. Drews '53
Verl L. Holden '53
James E. Reeder '53
William A. Johnson '54
Jack Foster '55
Gerald W. Harte '58
Robert E. Loud '58
Robert L. Swinney '58
Roy G. Asbahr '59
Michael E. Moore '59
Daunt L. Caudle '60
Alvin L. Butler '63
Charles A. Hart '63
Gene R. Meyer '63
Howard A. McClellan '64
Richard L. Baker '65
Kenneth L. McGinnis '65
R. John Rath '67
Nels J. Martin '69
Donald L. Winchell Jr. '69

TOP TEN CHAPTERS BY CONTRIBUTIONS

Includes both restricted and unrestricted gifts

1. IOTA (BUCKNELL UNIVERSITY)	\$95,136.00
2. RHO (LAFAYETTE COLLEGE)	39,395.75
3. THETA (PURDUE UNIVERSITY)	29,034.47
4. NU (INDIANA UNIVERSITY)	25,605.47
5. BETA (CORNELL UNIVERSITY)	24,997.24
6. NU ALPHA (COLUMBIA UNIVERSITY)	21,185.00
7. ZETA (PENN STATE UNIVERSITY)	13,311.21
8. EPSILON (FRANKLIN COLLEGE)	10,036.00
9. SIGMA (OREGON STATE UNIVERSITY)	9,983.00
10. ETA (UNIVERSITY OF ILLINOIS)	9,015.00

George F. Zimmer '69
John L. Robbins '72
Richard E. Carter '77
Joseph E. Vecera '78
William H. Jensen '79
Kenneth E. Moulton '79
Randal S. Saunders '79
Mark S. Pfister '84
Joel G. Ronning '85
Michael G. Crowley '88
Russell S. Weaver '88
Matthew W. Loutzenhiser '91

**TAU
CARNEGIE MELLON
UNIVERSITY**
\$342.00
Earle D. Moiles '37
James C. Reynolds '37
Daniel P. Dunbrack '87
Darin K. H. Mar '87
Paul J. Solomon '90
Brian G. Schorn '93
Wing Loong Cheung '99
K. Philip M. Lychak '98

**UPSILON
FRESNO STATE UNIVERSITY**
\$170.00
Robert A. Forsblad '41
Jack E. Peebles '44
Richard C. Stoner '50
Robert A. Holm '52
Frank W. Kinsey '52

**PHI
UNIVERSITY OF
OKLAHOMA**
\$210.00
William J. Ewalt '49
Jay A. Burns '51
Maurice Berger '52
Earl W. Dittman '53
Edmund R. Kirkland '53

**CHI
UNIVERSITY OF FLORIDA**
\$30.00
Joseph A. Myers '52

**PSI
LYCOMING COLLEGE**
\$2,464.44
Paul A. Sabin '52
Roger B. Ludlum '53
George R. Anderson '56
James F. Edgeworth Sr. '56
William H. Gallagher '57
C. Alan Stephan '57
David A. Himes '58
Barry G. Yeger '59
Jay H. McCormick '60
James T. Wolyniec '60
David M. Bliley '62

Luke H. Kauffman '62
Larry C. Grimm '63
Jerry A. Poe '63
Christopher Christie '65
James C. Hubbard '66
Richard G. Houck '67
Wade W. Pugh '67
Detlev J. Tauber '67
Carl E. Elser '68
James L. Miller '69
Richard H. Sherwood '69
Frederick Frank Jr. '70
Joseph F. Jadlocki Jr. '70
Andrew B. Tanger '70
Edward J. Genthner III '71
Bruce E. Grubb '73
Daniel Langdon '73
Barry R. Bausch '75
Thomas R. Kruger '87
John M. Thomas '92
Kirk C. Felix '93
Corey T. Hnat '95
Christopher T. Greenfield '96

**OMEGA
INDIANA UNIVERSITY OF
PENNSYLVANIA**
\$1,150.00
John D. Varner '57
J. Kent Roach '60
Stephen P. Wareham '61
Patrick B. Mikesell '62
Keith R. Watkins '63
Ronald Woolf '63
Domenic V. Calabro '65
Thomas E. Love '66
Jeffrey E. Meek '68
Timothy G. Rupert '68
James E. Perry '71
Guyton F. Giannotta '72
Douglas A. Roth '72
Louis J. Martarano '73
John M. Sakoian '73
Harold R. Shaffner '73
Raymond G. Miller '75
James E. Lore '76
Dean A. Mathies '77
David M. McDonald '78
Emmett M. Bonadio '79
Joseph D. Mucci '80
James J. Gattuso Jr. '81
Fred C. Krause III '84
John W. Sammer '89
Thomas A. Shields '90
John C. Rose III '92
Michael A. Jamison '97

**ALPHA ALPHA
LOCK HAVEN UNIVERSITY**
\$1,705.00
Michael Mezak III '58
Stephen B. Morley '58
Alex A. Zbur '58
Richard L. Funk '59

Frank D. Geno '59
James P. Murphy '59
Melvin G. White Jr. '59
Arlan R. Neill '60
Glenn G. Miller '61
Gene E. Rexford '62
Edward L. Bowes '63
Ronald G. Lilley '63
Dale T. Sphar '63
Lewis F. Frain '64
Larry E. Underkoffler '69
Gregory W. Kitchen '71
Richard DeBernardo Jr. '75
John J. Jarocki '75
George A. Wilhelm '75
Michael R. Mitrone '80
Dennis L. Ritchey Jr. '89
Patrick G. Hawbaker '91
Michael L. Peters '91
Nien-tzu Chen '94
Seth A. Fronk '95
David J. Cox '98

**BETA ALPHA
C.W. POST COLLEGE**
\$860.00
Charles H. Zwicker '00
Frank S. Ioppolo Sr. '63
John J. Zureck '63
Frank W. Harris '65
Richard T. Hennessy '65
Robert C. Higgins '66
James M. Leclair '66
Philip A. Schembra '68
Scott I. Weinstein '86

**GAMMA ALPHA
BRADLEY UNIVERSITY**
\$575.00
Steven Schilson '65
Richard E. Kurz '68
Matthias A. K. Staack '70
David L. McCluckie '71
Veto M. Yoches '71
Joseph J. Nowosielski I '72
Francis C. Furman '77
Robert S. McGann '77

**DELTA ALPHA
RHODE ISLAND STATE
UNIVERSITY**
\$15.00
Raymond R. Rocha '70

**EPSILON ALPHA
LEWIS UNIVERSITY**
\$35.00
Randall H. Fleck '75

**ETA ALPHA
ROBERT MORRIS COLLEGE**
\$600.00
Bradley K. Shoff '87
Robert W. Cooper '88

TOP TEN CHAPTERS BY PERCENTAGE OF MEMBERS WHO CONTRIBUTED IN FISCAL YEAR 1998-1999

ACTIVE CHAPTERS	INACTIVE CHAPTERS
1. Beta14.2%	1. Chi33.3%
2. Theta13.7%	2. Omicron25%
3. Nu11.7%	3. Kappa24.1%
4. Rho11.6%	4. Phi14.3%
5. Iota Beta11.5%	5. Mu12.5%
6. Eta11.4%	Theta Beta12.5%
7. Iota10.5%	6. Pi10.4%
8. Zeta9.4%	7. Sigma10.3%
9. Zeta Beta9.3%	8. Gamma Alpha8.8%
10. Lambda9.1%	9. Upsilon7.9%
	Tau Beta7.9%
	10. Chi Alpha7.0%

Mark P. Bula '89
Eugene A. Susi Jr. '90
Gary J. Norris '92
Steven M. Scanlon '94
Ronald R. Ramer Jr. '95
Christopher R. Fox '96
Michael J. Hart '98
Eric M. O'Connor '98

**THETA. ALPHA
SLIPPERY ROCK
UNIVERSITY**

\$120.00
Jeffrey F. Mullaly '85
William F. Bond '89
Corey J. Chalos '92
Russell J. O'Connor '97

**IOTA. ALPHA
UNIVERSITY OF PITTS-
BURGH AT JOHNSTOWN**

\$345.00
Sean S. Moran '83
Matthew P. O'Connor '83
Clayton J. Stahl '84
David V. Trapani '84
Brian J. Winters '88
Matthew A. Kulikowski '90
Christopher J. Moore '91

**KAPPA ALPHA
ILLINOIS STATE
UNIVERSITY**

\$240.00
Daniel R. Rendino '72
Douglas E. Goss '85
Brian J. Etten '91
Jeffrey A. Risch '94

**LAMBDA ALPHA
GANNON UNIVERSITY**

\$340.00
Andrew G. Wilson '86
Patrick M. Settemire '87
Anthony R. Kelly '89
Richard M. Andre '91
Richard S. Belli '92
Jason S. Salegna '97

**MU ALPHA
WEST VIRGINIA
UNIVERSITY**

\$85.00
Scott A. Hudimac '85
Dwayne E. Porter '85
Aaron S. Kesselring '97
Brett M. Ferro '98

**NU ALPHA
COLUMBIA UNIVERSITY**

\$21,185
Peter R. Acocella '83
Andrew F. Barth '83
John F. Kiernan '83
Michael J. McCool '83

Richard C. Oh Esq. '83
Joseph J. Adipietro '87
Stephen D. Savas '87
Roger G. Bowers '88
Jonathan P. Katz '88
Roderick B. Covlin '96

**XI ALPHA
TEMPLE UNIVERSITY**

\$35.00

Neil D. Larrimore '92

**OMICRON ALPHA
RUTGERS UNIVERSITY**

\$1,499.25
Thomas E. Lombardi '84
Anthony J. Moutis '85
Michael J. Kiernan '86
Scott F. Nadler '86
David K. Bernstein '88
Todd A. Auerbach '92
Ernest M. Reyes '92
James R. Balog '94

**PI ALPHA
UNIVERSITY OF TOLEDO**

\$2,382.41
Richard N.
Longenecker '86
Eric D. Barbe '87
Craig A. Gordon '87
Brian K. Bachtel '88
Paul D. Ensinger '89
Jerald Katcher '89
Thomas O. McGannon '90
Douglas M. Rammel '90
Todd M. Schnell '90
Robert E. Loewer '91
Anbu Lingappan '92
Gregg A. Peppel '94
Chadwick A. Rupp '94
Dave J. Oros '96
Vernon E. Hurd '97
William J. Stuchal '99
Ryan I. Meister '97

**RHO ALPHA
BRYANT COLLEGE**

\$115.00
Stuart W. Johnson '86
Michael A. White '91
Dana J. Bradley '92

**SIGMA ALPHA
HOFSTRA UNIVERSITY**

\$265.00
Erik A. Covitz '87
Alfred M. DiBernardo '87
Aaron L. Gobler '87
Timothy J. Gimpel '92

**TAU ALPHA
RADFORD UNIVERSITY**

\$2,420
Eric D. Padgett '86

Donald E. Lorton Jr. '87
Christopher M.
Brennan '88
Peter Byrne '88
Daniel E. J. Talmage Jr. '88
Graham P. Wilson '88
Derek C. Parsons '92
Stefan S. Dedes '95
Tyler B. Bunch '96
Christopher B. Miller '97
Douglas M. Miller, H
James E. Laws '00
Paul W. Spreder '01

**UPSILON ALPHA
ST. LOUIS UNIVERSITY**

\$1,608.79
Igino Germani Jr. '86
Mike F. Kazzie '86
David P. Koellner '86
Ralph A. De Palma Jr. '87
Daniel E. Mashburn '87
Mark S. West '88
Edward T. Stack III '89
Karl W. Nelson '90
Troy W. Fey '91
Michael D. Schelonka '91
Jeffery J. Caron '92
Peter P. Hogan '92
Earl W. Stolz II '92

**PHI ALPHA
CLARION UNIVERSITY**

\$205.00
Patrick A. Winger '87
Ryan H. Loberg '88
Dirk W. Johnson '92
Stanley R. Carr '95
Todd R. Marcinik '95
Kevin R. Killian '96
Peter J. Talento '97

**CHI ALPHA
UNIVERSITY OF PITTS-
BURGH AT GREENSBURG**

\$175.00
Ronald M. DeGuffroy '88
Wayne R. Lewandowski '88
Donald A. Ravasio '88

**PSI ALPHA
PENN STATE, BEHREND**

\$225.00
David A. Graves Jr. '89
David W. Hurd '95
Eric J. Pine '95
Matthew S. Kincak '98
Kurt E. Nachtman '02

**OMEGA ALPHA
VIRGINIA COMMON-
WEALTH UNIVERSITY**

\$35.00
John W. Bozicevic '90

**ALPHA BETA
UNIVERSITY OF DELAWARE**

\$535
Christopher T.
Kauffman '88
David L. Levengood '88
Michael D. Halbfish '91
Thomas R. Masino Jr. '91
John D. Tighe '92
James D. Carroll '93
Scott M. Smaniotto '93
Joshua L. Smith '93
Anthony J. Lupinetti '94
William R. Coffman '95
Patrick W. Argo '96
Thomas J. Cilmi '00
Jonathan L. Pearson '01

**BETA BETA
BALL STATE UNIVERSITY**

\$30
Michael W. Wilkins '97

**GAMMA BETA
VIRGINIA TECH**

\$125.00
Sean L. Bohl '89
Manuel J. Fernandez '89
Richard K. Degen '90

**EPSILON BETA
OLD DOMINION
UNIVERSITY**

\$730.00
Brian H. MacNeil '87
John W. Locke III '89
Brian M. Nolan '89
Clifton L. Parker IV '90
Scott D. Sutton '90
Kenneth L. Felix II '91
Robert D. Garrett II '91
Raymond H.
Springsteen '92
Brian S. Solis '94

**ZETA BETA
TARLETON STATE
UNIVERSITY**

\$910.00
John F. Hughes '89
Russell E. Fairchild '92
Lowell Duncan Parrish '93
Christopher K.
Gordon '95
Kenneth O. Barnes '98
Jason T. Lovell '98
Joshua L. Talbert '98
Matthew J. Sandlin '98
Turner D. Pollard '99
Greg M. Belleau '00
William Scott Bradley '00
Eric J. Duff '00
John D. Lee '00

**ETA BETA
WEST CHESTER
UNIVERSITY**

\$275.00
Howard A. Fidler '92
Boyd A. Miller '92
Amar Kosaraju '94
Brian L. Grove '95
Mark R. Pagano '98

**THETA BETA
NEW YORK INSTITUTE
OF TECHNOLOGY**

\$555.00
Douglas P. Barna 'H
Joseph Tollis
Michael A. Petruzzelli '88
Richard R. Sudderth '89
Frederick J. Neiser '90
Kai U. Gebhard '91
Robert A. Magnotti '92
Brian Thomas '92
Stuart R. Johnson '93

**IOTA BETA
ROCHESTER INSTITUTE
OF TECHNOLOGY**

\$1,145
Noel T. Aird '91
James M. Donahue '91
Raphael E. Isaac '91
Keith J. Bona '92
Mark Nowakowski '92
Brian J. Stumm '92
Kevin H. Birkmayer '93
Alok K. Kapoor '93
Giacoma LaFata Jr. '93
Peter C. Stoffel '94
Michael T. Jesse '96
John M. Kropf '97
David A. Clark '99
Lawrence J. Olivia '99
Keith R. Wilkinson '00

**LAMBDA BETA
JAMES MADISON
UNIVERSITY**

\$900.80
J. Hall Jones '91
Richard L. McCoy Jr. '92
Steven T. Barham '94
Paul H. Klewans '94
Ryan B. Schoenfeld '95
Daniel M. Hess '97
Allen D. Schutz '97

**MU BETA
SYRACUSE UNIVERSITY**

\$410.00
John M. Arnold '92
Brian S. Keller '92
Jonathan Hotz '94
David M. Orens '95

Gregory G. Smith '95
Jerry Vitsentzatos '95
David J. Matson '96
Joseph M. Toohey '99

**OMICRON BETA
WILLIAM PATERSON
UNIVERSITY**

\$134
Fabio Adduci '93
Paul J. Sartori '93
Paul E. Buczynski '95
Michael C. Tarleton '96
Jon D. Rubinstein '98

**PI BETA
STOCKTON STATE COLLEGE**

\$55
James F. Flores '94
Brian A. Martone '95
Hercules B. G. Liotard '97

**RHO BETA
EASTERN ILLINOIS
UNIVERSITY**

\$125.00
Frank A. Bart '92
Fidel Rios '94
Michael E. Walker '94

**SIGMA BETA
UNIVERSITY O. NORTH
CAROLINA, GREENSBORO**

\$15.00
Grady R. Catherwood '94

**TAU BETA
EAST TENNESSEE STATE
UNIVERSITY**

\$185.00
Michael W. Rogers '94
David B. Smith '94
Joseph A. Fowler '98

**UPSILON BETA
CLEMSON UNIVERSITY**

\$50.00
John M. Daniels '98
David S. Lutz '97

**PHI BETA
COLLEGE OF WILLIAM
AND MARY**

\$80.00
Scott A. Hall '94
Philip M. Hatfield '00

**OMEGA BETA
UNIVERSITY OF NORTH
CAROLINA,
ASHEVILLE**

\$25.00
Jay Johnson '99

I want to invest in the lives of students. I enclose my tax-deductible contribution of:
_____ (\$25) _____ (\$50) _____ (\$75) _____ (\$100) _____ (other)

Please make your check payable to the Kappa Delta Rho Foundation or you can charge your donation to your Visa, MasterCard, or American Express.

Card number _____ Expiration Date _____

Visa MasterCard American Express (circle one)

Signature _____ Date _____

_____ My employer and/or my spouse's employer will match my contribution; the matching gift form(s) is/are enclosed.

To ensure proper credit, please complete the following:

Name _____

Chapter _____ Graduation Year _____

Street _____

City _____ State _____ Zip _____

Telephone () _____ E-mail Address _____

_____ Note if new address

_____ I have included the Kappa Delta Rho Foundation in my estate plans.

_____ Please send information on planned giving opportunities with the Kappa Delta Rho Foundation.

Grand Consul Most Outstanding Chapter
Zeta Beta - Tarleton State University

O.D. Roberts Most Improved Chapter
Chi Beta - University of Charleston

Executive Director Recruitment Awards
Outstanding Recruitment
Iota - Bucknell University

Most Improved Recruitment
Beta - Cornell University

Recruitment Achievement
Alpha Society - Middlebury College, 24 Pledges
Beta - Cornell University, 15 Pledges
Zeta - Pennsylvania State University, 15 Pledges
Iota - Bucknell University, 27 Pledges
Rho - Lafayette College, 16 Pledges
Eta Alpha - Robert Morris College, 15 Pledges
Pi Alpha - University of Toledo, 16 Pledges
Alpha Beta - University of Delaware, 15 Pledges
Zeta Beta - Tarleton State University, 18 Pledges
Eta Beta - Westchester University, 19 Pledges

1998-1999 Chapter Awards

National Staff Outstanding Risk Management
Iota Beta - Rochester Institute of Technology

Donald C. Wolfe Outstanding Newsletter
1st Place - Zeta Beta - Tarleton State University
2nd Place - Tau Alpha - Radford University
3rd Place - Lambda Beta - James Madison University

George E. Kimball Outstanding Social Service
1st Place - Zeta Beta - Tarleton State University
2nd Place - Eta Alpha - Robert Morris College
3rd Place - University of Detroit Mercy Provisional Chapter

John L. Blakely Outstanding Philanthropy
1st Place - Omega - Indiana University of Pennsylvania
2nd Place - Zeta - Pennsylvania State University
3rd Place - Lambda Beta - James Madison University

Leo T. Wolford Outstanding Campus Involvement
1st Place - University of Detroit Mercy Provisional Chapter
2nd Place - Eta Alpha - Robert Morris College
3rd Place - Zeta Beta - Tarleton State University

Gino A. Ratti Outstanding Alumni Relations
1st Place - Alpha Beta - University of Delaware
2nd Place - Tau Alpha - Radford University
3rd Place - Zeta Beta - Tarleton State University

Dr. Harold Osborn Outstanding Intramural Sports
1st Place - Eta Beta - Westchester University
2nd Place - Chi Beta - University of Charleston
3rd Place - Zeta Beta - Tarleton State University

E. Mayer Maloney Outstanding Faculty Relations
Tau Alpha - Radford University

Foundation Awards \$34,000 in Scholarships

GENERAL SCHOLARSHIPS:

Joshua D. Bishop
O. D. Roberts Memorial Scholarship \$500
Rajeeva D. Serasinghe
Robert D. Lynd Scholarship \$500
Vladimir Jonathan Pelan
Past Recipients Scholarship \$500
Michael A. Robb
E. Mayer Maloney Memorial Scholarship \$500
Matthew R. Boss
Horace E. Shackelton Memorial Scholarship \$500
Brett M. Haworth
Wally T. Miller Memorial Scholarship \$500
William D. Johnston
Pi Alumni Scholarship \$500
Bradley S. Witzel
General Graduate Scholarship \$1,000

CHAPTER SCHOLARSHIPS:

Jeffrey P. Tyhach
Beta Chapter Scholarship \$500
Kyle P. Wheeler
Delta Chapter Scholarship \$500
Adam T. Naudascher
Zeta Chapter Scholarship \$500
Joseph S. Ponzo
Kenneth C. Kramer Scholarship (Zeta Chapter) \$500
Scott W. Byram
Eta Chapter Scholarship \$500
Gregory T. Carter
Theta Veterans Memorial Scholarship \$700
Ryan E. Snider
John C. Carl Scholarship (Theta Chapter) \$650
Gregory T. Carter
Theta Chapter Scholarship \$500

Thomas O.P. Sweeney, Jr.
William C. Hogan Memorial Scholarship (Theta) \$700
Anthony V. Georgiadis
Iota Chapter Scholarship \$750
Chad D. Holden
Iota Chapter Scholarship \$750
Alexander Y. Porto
Lambda Chapter Scholarship \$500
Paul W. Mizak
Rho Alumni Scholarship \$4,650
Youlian A. Petkov
Rho Alumni Scholarship \$4,650
Stephen D. Phillips
Rho Alumni Scholarship \$4,650
Paulo J. Melo
John C. Carl Scholarship (Upsilon Alpha Chapter) \$650
Jason D. Gregg
Samuel J. Briggs Memorial Scholarship (Phi Alpha Chapter) \$500

SCHOLARSHIPS RESTRICTED BY AREA OF STUDY:

Gregory T. Carter
Elmon M. Williams M.B.A. Scholarship \$500
Jeffrey P. Tyhach
Commerford B. Martin Memorial Engineering Scholarship \$1,000
Michael L. Doherty
Commerford B. Martin Memorial Engineering Scholarship \$1,000
Gordon Johnson Law Scholarship
John B. Lainhart (Penn State Dickinson School of Law) \$2,000
Asterios J. Fanikos (Seton Hall University) \$1,000
Paul A. Konstanty (Albany Law School) \$1,000

CHAPTER ETERNAL

	XI Robert M. Gruber '67 Chesapeake, VA
GAMMA Dr. Ronald K. Hadlock '56 Vancouver, WA	PI Dr. William C. Marshall '43 Pittsburgh, PA
DELTA Robert F. Hoelzer '45 Manhasset, NY Edward J. Tomic '49 Johnson City, NY	Jack E. Shaffer '52 Altoona, PA
ZETA William H. Bell '37 Oil City, PA David M. Jones '54 St. Louis, MO	OMEGA Ralph H. Ingersoll '57 Export, PA
ETA Richard J. Ausfahl '50 Peoria, IL William B. Cordis '64 Princeville, IL Billy G. Williams '50 Harrisburg, IL	GAMMA ALPHA Michael L. Games '81 Cincinnati, OH
THETA Keith J. Birmingham '78 Coraopolis, PA William E. Schaem '31 Winchester, VA	TAU ALPHA Jason C. Collins '02 Mechanicsville, VA
MU Bernard M. Cain '29 Schenectady, NY	

Individuals reported
deceased previously in
Quill & Scroll, who are not
deceased:

Paul R. Over,
Upsilon Alpha '90,
Sterling, IL
James L. Williams,
Nu '65,
Fishers, IL
David Mark O'Rourke,
Lambda '77,
Woodside, CA

National Directory

KAPPA DELTA RHO FRATERNITY

BOARD OF DIRECTORS

President (2000)
Robert L. Swinney, Sigma '58

Executive Vice President
Christopher B. Miller,
Tau Alpha '97

Vice President/Standards and Risk Management (2002)
Joshua L. Smith,
Alpha Beta '93

Vice President/Finance and Administration (2000)
Chairman Long Range Planning
Douglas M. Rammel,
Pi Alpha '90

Vice President/Education (2000)
Mark N. Lundgren, Nu '70

Vice President/Alumni Affairs (2000)
Mark S. West,
Upsilon Alpha '88

Secretary (2000)
Gerald L. Murray, Theta '66

Treasurer (2000)
Edward B. Curtis, Rho '62

Director/Insurance Programs (2002)
J. Hall Jones, Lambda Beta '91

Directors (2002)
David Bernstein,
Omicron Alpha '88
Richard O. Jones, Nu '64
Christopher K. Gordon,
Zeta Beta '95

Directors (2000)
Shawn M. Hoke,
Phi Alpha '95
Brian Lewis, Lambda '99
Eric Duff, Zeta Beta '00
Jay Johnson,
Omega Beta '99

Directors Emeritus
Robert D. Corrie, Beta '53
Robert D. Lynd, Iota '67
James F. Edgeworth, Sr.,
Psi '56

Ordo Honoris Selection Committee
Robert D. Corrie, Beta '53
- Chairman
Loran L. Stewart, Sigma '32
Gordon R. Stanley, Delta '59

Alumni Affairs Committee
Mark S. West, Upsilon Alpha '88 - Chairman
Christopher K. Gordon,
Zeta Beta '95

Judiciary Committee
Joshua L. Smith, Alpha Beta '93 - Chairman
Shawn M. Hoke,
Phi Alpha '95
Richard O. Jones, Nu '64
Christopher B. Miller,
Tau Alpha '97

Finance Committee
Edward B. Curtis,
Rho '62 - Chairman
Suzanne M. Balash
David Bernstein,
Omicron Alpha '88
J. Hall Jones,
Lambda Beta '91
Christopher B. Miller,
Tau Alpha '97
Douglas M. Rammel,
Pi Alpha '90
Robert L. Swinney, Sigma '58

Expansion Committee
Eric Duff, Zeta Beta '00
- Chairman
Shawn M. Hoke,
Phi Alpha '95
Brian Lewis, Lambda '99
Gerald L. Murray, Theta '66

Marketing and Communications Committee
David Bernstein, Omicron Alpha '88 - Chairman
Jay Johnson, Omega Beta '99

Nominating Committee
James F. Edgeworth, Sr.,
Psi '56 - Chairman
Brian Lewis, Lambda '99
Christopher B. Miller,
Tau Alpha '97
Douglas M. Rammel,
Pi Alpha '90
Mark S. West, Upsilon Alpha '88

Convention Committee
Scott A. Johnson, Phi Alpha '95 - Chairman
David Bernstein, Omicron Alpha '88
Paul Downes, Gamma '68
John Lee, Zeta Beta '00"
Mark Lundgren, Nu '70
Dominick Schrippa, Beta '99
Jerry Stebbins, Phi Alpha '88
Mark West, Upsilon Alpha '88

Education Committee
Mark N. Lundgren, Nu '70
- Chairman
Sean Hoke, Phi Alpha '95

KAPPA DELTA RHO FOUNDATION

BOARD OF TRUSTEES

President
Paul A. Downes, Gamma '68

Vice President/Investments Secretary
Ray C. Hunt, Rho '53

Treasurer
Robert D. Corrie, Beta '53

Trustees
Andrew F. Barth, Nu Alpha '83
James H. Buterbaugh,
Zeta '55
John C. Carl, Theta '51
David R. Hamrick, Zeta '57
George A. King, Delta '81
Thomas C. Lockwood, Nu '56
Robert D. Lynd, Iota '67

Director of Gift Planning and Development
William J. Paris, Eta '87

INVESTMENT COMMITTEE
Ray C. Hunt, Rho '53 - Chairman
Andrew F. Barth, Nu Alpha '83
Robert D. Corrie, Beta '53
William J. Paris, Eta '87
Robert P. Youngman,
Alpha '64

SCHOLARSHIP COMMITTEE
John David Reed, PhD.,
Eta '64 - Chairman
Thomas L. Guthrie, Theta '62
Dr. Alan T. Lord, Kappa '72

LAW SCHOLARSHIP
Paul W. Upton, Alpha '66

ORDER OF THE PEREGRINE FALCON COMMITTEE
Michael Higley, Beta '97

CHAPTERS
Kappa Delta Rho Society Alpha Chapter
Middlebury College

Kappa Delta Rho Fraternity Alpha (inactive)
Middlebury College

Beta
Cornell University

Gamma (inactive)
University at Albany
(S.U.N.Y.)

Delta
Colgate University

Epsilon
Franklin College

Zeta
Penn State University

Eta
University of Illinois

Theta
Purdue University

Iota
Bucknell University

Kappa (inactive)
Ohio State University

Lambda
University of California - Berkeley

Mu (inactive)
University of Michigan

Nu
Indiana University

Xi (inactive)
Colby College

Omicron (inactive)
Butler University

Pi (inactive)
Gettysburg College

Rho
Lafayette College

Sigma (inactive)
Oregon State University

Tau
Carnegie Mellon University

Upsilon (inactive)
Fresno State University

Phi (inactive)
University of Oklahoma

Chi Colony (inactive)
University of Florida

Psi
Lycoming College

Omega
Indiana University of Pennsylvania

Alpha Alpha
Lock Haven University

Beta Alpha (inactive)
C.W. Post College

Gamma Alpha (inactive)
Bradley University

Delta Alpha (inactive)
Rhode Island State University

Epsilon Alpha (inactive)
Lewis University

Zeta Alpha (inactive)
University of Dayton

Eta Alpha
Robert Morris College

Theta Alpha
Slippery Rock University

Iota Alpha
University of Pittsburgh/Johnstown

Kappa Alpha (inactive)
Illinois State University

Lambda Alpha (inactive)
Gannon University

Mu Alpha (inactive)
West Virginia University

Nu Alpha
Columbia University

Xi Alpha (inactive)
Temple University

Omicron Alpha (inactive)
Rutgers University

Pi Alpha
University of Toledo

Rho Alpha (inactive)
Bryant College

Sigma Alpha (inactive)
Hofstra University

Tau Alpha
Radford University

Upsilon Alpha
St. Louis University

Phi Alpha
Clarion University

Chi Alpha (inactive)
University of Pittsburgh/Greensburg

Psi Alpha
Penn State Behrend College

Omega Alpha (inactive)
Virginia Commonwealth University

Alpha Beta
University of Delaware

Beta Beta (inactive)
Ball State University

Gamma Beta (inactive)
Virginia Tech

Delta Beta (inactive)
West Liberty University

Epsilon Beta
Old Dominion University

Zeta Beta
Tarleton State University

Eta Beta
West Chester University

Theta Beta (inactive)
NY Institute of Technology

Iota Beta
Rochester Institute of Technology

Kappa Beta
Edinboro University

Lambda Beta
James Madison University

Mu Beta
Syracuse University

Nu Beta (inactive)
Fordham University

Xi Beta (inactive)
University of Pittsburgh

Omicron Beta
William Patterson University

Pi Beta (inactive)
Richard Stockton College

Rho Beta (inactive)
Eastern Illinois University

Sigma Beta
University of North Carolina/Greensboro

Tau Beta (inactive)
East Tennessee State University

Upsilon Beta
Clemson University

Phi Beta
The College of William and Mary

Chi Beta
University of Charleston

Psi Beta
East Stroudsburg University

Omega Beta
University of North Carolina/Asheville

Provisional Chapter
University of Detroit/Mercy

Group of Intent
Loras College

FROM THE ARCHIVES



▲ Delta Chapter. Do you recognize anyone?
What year was this taken?



▲ Some of the founders of Theta Chapter at Purdue. Do you know who they are?



ALUMNUS CREATES INSURED ENDOWMENT

Eta Chapter alumnus Tim Moore '68 recently joined the Heritage Society, planned giving recognition society, with the KDR

Foundation's first Charitable Insured Endowment. With an initial contribution of around \$1,200, this will set up an endowment of \$50,000 to be received by the Foundation at the time of his death.

"I had a great experience with KDR at Illinois. When I met with the Foundation staff and learned about the *Vision 2000 campaign*, I wanted to do something meaningful. By creating the charitable insured endowment, I can leave a significant gift at my death. This will help ensure that the programs supported by the Foundation continue long after I'm gone. I'm pleased that I'm able to contribute to the future education of young people in this way."

Each year Brother Moore will make a contribution to the Foundation to cover the cost of the premium on his insured endowment. Premium payments will continue for approximately 10-12 years and will be tax-deductible to him. The endowment is guaranteed to the Foundation through a specially designed policy issued by New York Life Insurance Company. The Foundation will be paid the full \$50,000, regardless of the year of his death. Over time, as premiums accumulate, the amount of the ultimate endowment can even increase from the initial \$50,000.

For more information about setting up an insured endowment of your own, contact Bill Paris, director of gift planning and development, Kappa Delta Rho Foundation, 331 South Main Street,

The following table indicates approximate amounts needed annually (for 10-15 years) to set up insured endowments:

Current age	\$10,000	\$25,000	\$50,000	\$100,000
45	\$400	\$700	\$1,200	\$2,100
55	\$500	\$1,100	\$2,000	\$3,600
65	\$900	\$1,800	\$3,500	\$6,800

Greensburg, PA 15601; (800) 536-5371 ext. 16, or by E-mail at Foundation@kdr.com.

VISION

A Campaign for Kappa Delta Rho

CAMPAIGN COUNTER

Pledges payable over five years
VISION 2000 Campaign pledging ends Dec. 31, 2002

GOAL: \$5,000,000

	Goal	Committed as of October 25, 1999
Cash Commitments	\$2,500,000	\$717,425
Estate Gift Commitments	\$1,750,000	\$210,000
General Fund	\$750,000	\$332,491
TOTAL: \$1,259,916		



Kappa Delta Rho, Inc.
National Office
331 South Main Street
Greensburg, PA 15601

Address Service Requested

NON PROFIT
ORGANIZATION
US POSTAGE PAID
PERMIT # 1715
PITTSBURGH, PA 15290