

WINTER 1984

# The Quill & Scroll

of Kappa Delta Rho

Our Fraternity Is More Than A Keg

Ordo Honorium

he word is growth and it continues for Kappa Delta Rho. I'm extremely pleased to announce the formal pledging, thus granting Provisional Chapter Status, to a local group at Colgate University. This local group, called KDR, was our Delta Chapter, which disaffiliated in 1972. The completion of the reaffiliation with the formal initiation and return of the original charter is planned for late in the spring semester of 1985.

To further our growth, I'm also extremely pleased to announce the establishment of a Provisional Chapter at Radford University at Radford, VA. Because of the degree of accomplishments toward their National requirements, it is now projected they will receive full chapter status sometime in the late spring semester of 1985.

It is expected that Provisional Chapter status will be officially granted in the next few months to groups at the University of Michigan, Parks College, Illinois, and Lock Haven University, Pennsylvania. Plans are already in preparation for chartering our present

Provisional Chapters at Temple University (Jan. '85), Bryant College, and Hofstra University (April '85). We fully expect to announce in the Spring issue of THE QUILL & SCROLL five additional Provisional Chapters. Also, as a result of the tremendous response to our recent request for alumni involvement (1984 Alumni Fund QUILL & SCROLL), we hope to announce the founding of several new Metropolitan Alumni Clubs.

Our chapters and National Headquarters are prepared to meet the challenge of continued success, but we cannot do it alone. This continued success will depend on the increased involvement and financial support of more alumni. This year, the Foundation's goal of \$50,000 has never been more important.

One of the results of our growth, is this new and enlarged QUILL & SCROLL. It is our intent to address not only the accomplishments and honors of our brotherhood, but the problems facing our fraternity and the entire Greek community.

Your National Fraternity is now in the process of long range planning. Many alumni and undergraduates have been asked to be a part of this and their input has been outstanding. Although these responses continue to arrive, such topics as increased chapter services along with further expansion look to be of major importance. I agree with the direction, but the necessary factor to accomplish these goals is increased financial support.

Brothers, your experience in Kappa Delta Rho has been meaningful to you so help us make that same experience available to more undergraduates. The future growth of our Brotherhood is in your hands. *We can be better than we are . . . Δ*

From the  
Executive Director

## CONTENTS

Our Fraternity Is More Than A Keg	
Values and Standards . . . . .	1
Vincent J. Thompson	
When Did the Problems Arise? . . . . .	2
Dr. David H. Wilder, Bucknell University	
Ordo Honorium . . . . .	4
Annual Awards . . . . .	6
Alumni News . . . . .	9
National News . . . . .	10
Chapter Eternal . . . . .	11
National Directory . . . . .	12

## WINTER 1984

### The Quill & Scroll

#### KAPPA DELTA RHO

Founded at Middlebury College on May 17th, 1903 by George E. Kimball, Gino A. Ratti, Chester M. Walch, Irving T. Coates, John Beecher, Thomas F. Bartley, Benjamin E. Farr, Pierce W. Darrow, Gideon R. Norton and Roy D. Wood.

#### THE QUILL & SCROLL

Vincent J. Thompson

Managing Editor

Donald L. Stohl

Editor

Suzanne Balash

Peggy Zimmerman

Editorial Assistants

Volume 90 Number 3

Winter 1984



The Quill & Scroll (USPS 605-420), an educational journal, is published four times a year in the spring, summer, fall and winter by Kappa Delta Rho, Inc., 331 South Main Street, Greensburg, Pa. 15601. Forward all correspondence, manuscripts and changes of address to the National headquarters.

©1984 Kappa Delta Rho, Inc.  
Designer/Typographer/Printer  
Chas. M. Henry Printing Co.

*The ritual was performed* in a manner I had never before witnessed. The fraternal experience these men enjoyed as undergraduates was instantly rekindled through this, the most basic standard of our fraternity. What brought these men together for this special ceremony was unplanned, but years in the making. Four months prior, ironically enough, at their Founder's Day Celebration, these men learned that their chapter was on the verge of collapse. Today, they were initiating new men that would now carry on their chapter's proud tradition.

What happened to this chapter which had previously been a campus leader? The most basic premise on which our fraternity is founded is the achievement and maintenance of the values and standards of membership which the ritual teaches. This particular chapter had lost, or lowered, its standards to the point that it could barely survive, its existence threatened with each passing term. The situation over a period of years compounded to the point where the chapter house was severely neglected, the chapter membership was divided, and apathy ruled.

Although this extreme situation is not commonplace, it does occur. Often times the symptoms of a chapter headed toward extinction are obvious, but too late acknowledged. In an effort to offset future occurrences of this type, we must now take the time to re-acquaint ourselves of these high ideals of values and standards, so apparently a part of our past.

The standards of fraternity membership which our founders sought were somehow lost during the late sixties and early seventies. (The sole basis of the fraternity experience became alcohol related.) Fraternity membership has taken on a new importance with American college students and today many men are desiring more than an excuse to party. They are career oriented, looking for the fraternity experience to be a positive supplement to their university experience, while not detracting from it.

Some campus administrators are not thinking twice about evaluating the appropriateness of their Greek Systems and without offering constructive support, are abolishing them completely (Colby, Amherst). While those cases are the minority, it is increasingly apparent that we need to take the initiative to see that our chapters are actively working to achieve their full potential for success.

Yes, we are a "social" fraternity, but this is only a minor part of our general programming. The National Fraternity, over the past several years, has taken the charge of promoting this type of chapter environment. So far, we have been remarkably successful. We need, and our undergraduates are asking for, the guidance of our alumni to show them that our fraternity is more than a keg of beer.

**H**OUSE MANAGEMENT: Proper maintenance of physical structure, grounds, and kitchen with regards to University/College, health department, fire department regulations.

**O**RGANIZATIONAL STRUCTURE: The leadership structure of organization is vital to the continued success of that organization. Timely and productive Executive Committee and Chapter meetings, annual officer retreats, leadership training sessions all contribute to a cohesive organizational structure.

**N**EIGHBORHOOD/COMMUNITY/UNIVERSITY RELATIONS: A good chapter realizes that it is a member of the community in which it resides and a guest auxiliary of the university. It should strive to maintain a positive relationship with both, understanding the standards and rules that both relationships carry.

**O**BLIGATION TO HUMAN SERVICE: Participation in, or sponsorship of community service/philanthropic projects provide a meaningful contribution to those around us and build upon a total balanced chapter experience.

**R**ITUALISM: Use and understanding of our ritual in developing chapter and personal ideals. The foundation of chapter excellence begins with the ritual.

## Our Fraternity is More Than a Keg

**S**CHOLASTIC DEVELOPMENT: The chapter should place the highest priority on academic achievement of its members. The Fraternity exists in conjunction with, and because of, the university/college and should provide the utmost support in helping her members attain their degree.

**U**NITY: The goal of and for the complete chapter experience. Individuals working, living, and playing together with internal harmony.

**P**OSITIVE PROGRAMMING: All areas of chapter programming are positive in nature benefitting the individuals and chapter. The fraternity experience is built around a structure of positive chapter programs. These programs should provide the opportunity for consistent, enthusiastic participation by all members.

**E**DUICATION: Proper Pledge/Membership Education with the ideals our fraternity was founded upon. A constructive program based on the National Fraternity's Program without mental or physical hazing and building towards a more beneficial chapter experience to last beyond collegiate years.

**R**ECRUITMENT: The cornerstone of building the chapter experience. Qualitative and Quantitative goals set well before the rushing period with an understanding and utilization of the benefits of "dry-rush."

**O**BJECTIVE SOCIAL PROGRAM: Provide a positive well-rounded social program with emphasis on development of etiquette training and awareness of alcohol/drug abuse.

**M**ONETARY MANAGEMENT: Financial operations play a critical role in the success of a chapter. Through a strong financial discipline, consistent bookkeeping, professional supervision, and fiscal controls, the chapter builds a strong atmosphere of financial responsibility.

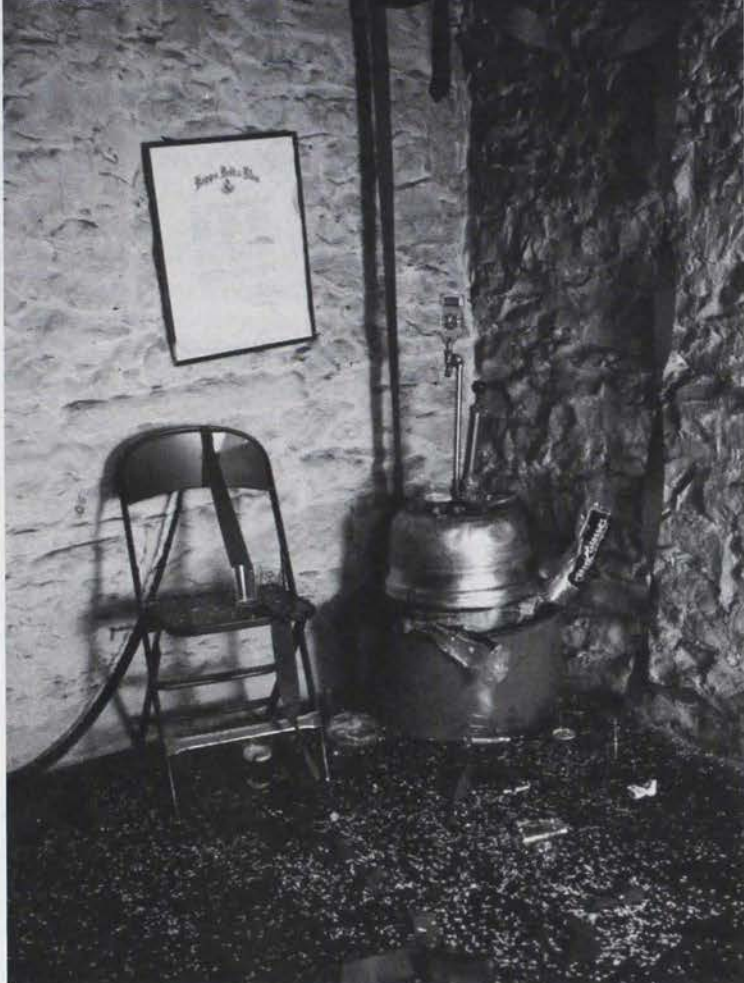
**N**ATIONAL FRATERNITY: A clear understanding of the National Fraternity and the obligation of the chapter to maintain an identity with it. This is done through consistent communication with the National organization, filing timely reports.

**I**NVOLVEMENT: Membership in outside activities (campus/community) lends itself to not only development of the individual, but the promotion of a positive image of the chapter.

**A**LUMNI RELATIONS: A strong alumni relations program is a key element in the success of our chapters. Continued involvement by graduate brothers provide continuity and strength in vital areas of chapter management and programming. The chapter's responsibilities include planning activities, timely correspondence and a recognition program. Δ

Dr. David H. Wilder prepared the following comments for a panel discussion on *Fraternity at Bucknell: Ideals and Realities*.

## When Did the Problems Arise?



Although his remarks focus on Bucknell, their pertinence for both higher education nationally and for fraternities in many other institutions led us to obtain his permission to publish them in this journal.

Dr. Wilder is the Director of Psychological Services at Bucknell, and an Assistant Professor in the Department of Psychology. He is quick to point out that he is not and never has been a fraternity member, and that in the last analysis he has more in common with 'faculty types' than 'fraternity types.' However, as a psychologist who has talked in depth with both Greeks and Independents, and men and women, and who has published research on the personality traits of both Greeks and Independents, he believes that fraternal life provides important growth experiences for many young college students.

Dr. Wilder received his bachelor's and masters degrees from Oberlin College, and his doctorate degree in psychology from Boston University. After completing internships in Veterans Administration hospitals in the Boston area, he spent two years as a staff psychologist at IBM in Kingston, New York. He was the Assistant Director of the Counseling Service at Princeton University before joining Bucknell in 1963. He spent two years in the Marine Corps during the Korean conflict.

When the panel asked me to address the question of institutional standards for student behavior, my first thought was to pull out the Student Handbook and recite the Regulations Relating to Conduct. But as I gave the matter more thought, things got a bit more complex.

All forms of community require a modicum of conformity to the goals of the group. For the fraternity, this requires conformity both to the fraternity, and to the larger institution of which it is a part. As for the former, the very existence of fraternities is *de facto* evidence of their capability for community. It bespeaks a desire for affiliation; an acceptance or conformity to group standards in the interests of group cohesiveness and social regulation; a commitment to the welfare of others; acceptance of the university's central academic goal; contributions of money, time and energy in providing social activities for the larger community; a commitment to control the strong and protect the weak, and so on.

As for conformity to the academic community, current evidences of friction suggest conflict with the goals of the institution. This incompatibility can be traced at least in part to historical factors: specifically, the goals of the larger community have changed, and some of today's frictions represent a lag between changed goals on the one hand, and accommodation to those changes on the other.

To put it in other words, we deregulated the social behavior of college students in 1971, establishing a new model of community; and that change has been followed by a second change in the '80's. The first period in this cycle encompassed the 1950's and early 60's. During this period, the academic community was seen as a community of scholar mentors acting as intermediate guide, counselors, and teachers to young adults in transition from parental dependency and authority to adult independence and responsibility. The staff of the institution assumed an *in loco parentis* role, accepting responsibility for setting and enforcing institutional academic and social goals in keeping with the developmental status of the student. Students were given graded increases in responsibility—specifically freshmen were assumed to be less equipped than seniors to accept autonomous responsibility and its concomitant privilege. The academic community was a quasi-family, with parental roles, with childish behavior roles, with maturing young adult roles, and so on. Conformity in this community required acceptance of institutional standards, of institutional prerogatives for the modeling of student behavior, and of institutional authority to enforce those standards.

Let me offer a few specifics to paint a clearer picture. In the 50's fraternities had live-in housemothers, later replaced with advisors who took an active role in monitoring and guiding the life of the fraternity; dormitories had live-in assistant deans whose role was both disciplinary and supportive. Noise in the dormitories, for example, was the direct responsibility of the live-in RA and assistant deans. Alcohol was not permitted in the dormitories, either in the public areas or in the student's rooms. Because the dormitory was University property, the dean and his staff had authority to enter, and if necessary search a student's room for contraband or 'illegal' behavior, and to effect a disciplinary dismissal without recourse to complicated hearings, due process safeguards, etc. If a student was physically or mentally ill, the Health Service had the authority to call and inform parents, and to require withdrawal. Women were required to be in the dormitories by certain hours, and men were not permitted in the women's dormitories during those hours. The curriculum had distribution requirements, physical education requirements, and

foreign language requirements. Faculty members were largely free to give failing grades for cheating on examinations or plagiarism without formal hearings, authorization by the Dean, etc. Fraternity parties were limited to Friday or Saturday evenings, but the Dean's staff together with IFC members patrolled the houses to control disorderly behavior, turn off the tap, or stop the party — always with the authority to suspend or dismiss recalcitrant trouble makers.

*The first period in this cycle encompassed the 1950's and early 60's. During this period, the academic community was seen as a community of scholar mentors acting as intermediate guides, counselors, and teachers to young adults in transition from parental dependency and authority to adult independence and responsibility.*

The activist movement between 1968 and 1972 brought about the abandonment of the *in loco parentis* model. We entered a second period with a new model for student behavior; a model which had gargantuan implications for student behavior as well as for institutional responsibility and authority for student behavior. Specifically, we\* adopted what amounted to a *peer community* model. We took the position that students were (or should be) mature enough to govern their own behavior. We asserted that "the University could not legislate morality." We told students that the University and its staff should not dictate the out-of-classroom behavior of students. When there was noise in the dormitory, we told the student that she/he should tell others to quiet down. If his/her request was ignored, she/he was encouraged to press charges — in the name of student development, we "counseled" the timid or submissive student to be more assertive, but we did not act on their behalf. If one's room-mate had a live-in boyfriend every weekend, the student was encouraged to assert her property rights, to press charges, or to find other accommodations during the weekend. We were relatively helpless to control the strong, and protect the weak (one of the fundamental criteria of civilized society) because taking action required the testimony of a reluctant and frightened witness. We told students that marijuana was harmless. We told them that their rooms were their private property wherein they could smoke pot, drink, make love, or whatever. The Federal Privacy Act constrained us from calling parents when a son or daughter was physically or psychologically ill, in some form of trouble, and so on. We could not require withdrawal of students who were seriously ill, and we were not able to hospitalize a student against his/her will. Open visitation in dormitories allowed access to all dorms by all students — male intruders were able to enter rooms, fondle the sleeping female students, and walk out again because the dormitories were unlocked. Fraternity advisors became less actively involved with the fraternity and had no authority to exert control. Alcohol flowed freely in the fraternities with little effective regulation and control. The distribution requirement was dropped on the notion that the student was capable of selecting his/her own courses (perhaps with a little assist from an advisor). The language requirement was dropped with the idea that students profitted more from learning material that they were interested in and actively selected. The physical education requirement was dropped. And of course, the picture would be hopelessly incomplete if we omitted reference to the dress code: it was dropped — or at least modified beyond all recognition. In the spirit of the peer community, some staff members were uncomfortable using formal titles, and encouraged student/staff relationships on a first name basis.

Surprisingly, (perhaps because some of our students were reasonably sensible and responsible people), the university's abdication of authority did not result in serious abuses overnight. But in the absence of well articulated standards and the authority to enforce them, abuses gradually and inevitably increased. In

short, a peer community could not depend exclusively on modeling by staff peers, or on responsible student leadership without articulated standards and staff authorized to enforce them; the *peer community* was an untenable model. As abuses occurred, so did frustration among staff members of the academic community (and many students).

Abuses, however, were a two way street; we also reneged on our part of the bargain. In the peer community era we entered into a social contract with students which gave them a substantial voice in campus governance; they were well represented in the Senate, on advisory committees, and so on. We didn't serve notice that that contract was null and void. It simply became inoperative by default. And that has had an effect on student morale: in 1984, 87 percent of our students felt that they had little or no voice in campus governance, compared to 49 percent back in 1972. And if morale is a factor in student or fraternity behavior, it may need to be addressed. Indeed, if one of the functions of higher education is preparing our students for responsible roles in a democratic society, an appropriate role in campus governance constitutes one of the goals of an academic community.

And so we come 'half-circle' to a demand for increased controls, to a re-statement of 'limits' or standards; half-circle because although the institution is resuming responsibility for establishing standards, those standards will probably never revert to the pre-60's conditions. For example, we are reconsidering a core curriculum, the objective of which is a modified distribution requirement. We have begun again to lock the dormitories to prevent the intrusion of unauthorized persons. We have re-asserted the institution's right to impose involuntary health withdrawals. We have insisted that fraternities limit their week-night partying. We have formed a faculty committee to sniff out evidences of 'sexism,' or 'racism'. We have formed another faculty committee to decide what to do about the growing problem of the fraternities. And so on. In short we are re-asserting University standards of behavior. In so doing it is important that we play the role of the 'good parent' by accommodating the needs of students while at the same time asserting the needs of the academic community.

*We have begun to lock the dormitories to prevent the intrusion of unauthorized persons. We have re-asserted the institution's right to impose involuntary health withdrawals. We have insisted that fraternities limit their week-night partying. We have formed a faculty committee to sniff out evidences of 'sexism,' or 'racism'. We have formed another faculty committee to decide what to do about the growing problem of the fraternities. And so on.*

The sum and substance of this analysis, then, is that the current friction between the Greek life and other portions of the academic community can be attributed to the fact that the Greeks adapted to the model of independent social behavior that the institution promulgated both implicitly and explicitly in the 70's. That model of community is clearly unacceptable to other components of the academic community. And the University is now in the position of re-articulating the University's standards of social behavior for its students. As the '70's presented a crisis in authority, by stripping the institution of many of its prerogatives, the '80's will be a period of measured and thoughtful reassertion of institutional responsibility for the welfare not only of students, but of the whole academic community. Δ

The entire article nor parts may be reprinted without the permission of Dr. David H. Wilder.

\*The editorial we in this paragraph refers to liberal activist faculty and students who, together with an acquiescing administration, constituted the institutional we.

John Booth Z'51, Chairman of the Selection Committee, has announced the 13 recipients of the Gamma Class of Ordo Honorium. As in the past, the awardees are selected from nominations submitted by the Chapter Alumni Corporations. This is the first year that a father and son, and two brothers have been selected. While all members of the Gamma Class are listed, only six will be featured in this issue. The remaining honorees will be presented formally in the following issue of The Quill and Scroll.

## GAMMA CLASS

- |   |             |
|---|-------------|
| Kenneth E. Botkin   | Theta '48   |
| <i>Professor and Chairman of Engineering Graphics Department, Purdue University</i> |             |
| Walter E. Burnham (Deceased)  | Nu '27      |
| Harry E. Chesebrough  | Mu '32      |
| <i>Retired Vice President of Chrysler Corporation</i>                               |             |
| Richard R. DeWitt   | Eta '49     |
| <i>President, International Nickel Company, Inc., New York</i>                      |             |
| William E. Goodwin  | Nu '61      |
| <i>Controller—Lilly Endowment Inc., Indianapolis, IN</i>                            |             |
| John B. Hoben   | Delta '30   |
| <i>Professor of English—Emeritus, Colgate University</i>                            |             |
| Donald P. Phillips  | Zeta '57    |
| <i>Owner, Phillips Mushroom Corp., Kennett Square, PA</i>                           |             |
| R. Marshall Phillips  | Zeta '60    |
| <i>Owner, Phillips Mushroom Corp., Kennett Square, PA</i>                           |             |
| Gordon R. Stanley   | Delta '59   |
| <i>Multi-area Businessman, Fulton, TX</i>   |             |
| Oran B. Stanley   | Omicron '31 |
| <i>Retired Professor of Botany and Advisor—Colgate University</i>                   |             |
| Faye H. Stewart   | Sigma '38   |
| <i>President—Flying Scotman Inc., Eugene, OR</i>                                    |             |
| Colston E. Warne  | Beta '20    |
| <i>Founder of Consumers Union, and Publisher of Consumer Reports Magazine</i>       |             |
| Peter N. Webber   | Alpha '57   |
| <i>Owner and Operator of Sugarloaf Inn, Maine—Real estate owner and developer</i>   |             |



Gordon R. Stanley  
Delta '59

Multi-Area  
Businessman/Civics

**Gordon Stanley** is a graduate of Colgate University, Class of 1959, with an A. B. in Geology.

Brother Stanley is presently the owner, operator, and partner of several business and real estate investments. Prior, he owned and operated Marineland of Rockport, a Texas retail boat and motor dealership. From 1959 to 1962, Gordon served as an officer in the United States Air Force, with one tour of duty in Southeast Asia. He was discharged with the rank of Captain.

In 1974, Gordon was one of the six organizers and original Directors of the Live Oak State Bank in Rockport, Texas, which is now merged with Allied Bankshares headquartered in Houston, Texas. He still serves on the Board.

A civic minded person, Mr. Stanley is a twenty year member of the Rockport Lions Club, a former Director of the Rockport Chamber of Commerce, a former Director for the Corpus Christi Area Convention and Tourist Bureau, a founding member and Director of the Rockport Country Club, and a member of the First Presbyterian Church of Rockport. Gordon is married to the former Kay Thompson. They have two daughters, Shawn, age 12, and Sherri, age 10, and reside in Fulton, Texas. Brother Gordon is the son of Oran B. Stanley, Omicron '31, also one of the Brothers elected to the Ordo Honorium, Gamma Class.



Kenneth E. Botkin  
Theta '48

Educator, Professor  
of Technical Graphics  
Purdue University

**Kenneth E. Botkin** graduated from Purdue University in 1948 with a B. S. in Mechanical Engineering, and earned his Masters from Purdue in Industrial Engineering in 1954. From 1948 to 1967, he served as

advisor to Theta Chapter, as well as board member and officer of the house corporation.

Brother Botkin has been on the faculty at Purdue for 36 years and is a member of several scientific and professional societies including American Society of Mechanical Engineers, American Society for Engineering Educators, American Association of University Professors, and Professional Society for Nuclear Defense. He served on many committees and chaired several committees for both the ASME and ASEE. Mr. Botkin served in the military service in the AUS and Air Force from 1943 to 1945.

Kenneth was active in community youth and school activities including cubmaster of West Lafayette Little League, and West Lafayette Athletic Booster Club. He is also a member of the John Purdue Club at Purdue. Other organizations in which Mr. Botkin is active include the Elks Club and the Rotary Club. He was appointed to the West Lafayette Traffic Commission in 1958 and has been re-appointed six times by both Republicans and Democrats. Professor Botkin was involved with the administration of Purdue Employees Federal Credit Union, and served as trustee and treasurer of the West Lafayette Public Library for eight years.

Brother Botkin has many publications to his credit, the most recent being co-author of three books related to problems in engineering drawing and graphics.

Mr. Botkin married the late Alice Louise Baker in 1944, and has three sons; Kenneth C., Michael J., and Martin L.



Peter Webber  
Alpha '57

Businessman/Real  
Estate Developer  
Owner, Sugarloaf Inn,  
Sugarloaf, Maine

**Peter Webber** attended Middlebury College and graduated in 1957 with a degree in Sociology. While at Middlebury Mr. Webber gained much recognition as a skier, both cross country and jumping, as well as downhill and slalom events. He captained the Middlebury ski team his senior year.

Upon graduation, the Maine native returned to Farmington where he opened the first full line ski shop in the state. In a few years he had opened three new shops in Lost Valley Ski Area, Sugarloaf, and

Augusta. In the early 1970's, K-2 fiberglass skis became the rage, and Peter accepted the position of Eastern Sales Manager of K-2. After much success with K-2, Brother Webber accepted the opportunity to purchase Sugarloaf Inn Ski Resort. At this point, Mr. Webber formed the Peter Webber Company and became a developer, building and selling condominiums at the bottom of Sugarloaf Mountain. In addition, to make Sugarloaf a year-round attraction, Peter decided to add an 18-hole championship golf course, which is presently under construction.

Mr. Webber has also begun a fifty-four unit development of luxury homes in Rockport, Penobscot Bay area in the mid-coast Maine area. With condominiums in the mountains and luxury homes at the sea, Mr. Webber has become one of Maine's leading real estate developers.

Brother Webber is married to Martha Beck of Waterville, who worked side-by-side with him in building up Sugarloaf Inn. They have three children, Susan, Peter, and Kate and reside in the Resort enclave of Redington North. Both Peter and Martha are active in the community affairs of Carrabassett Valley, a small town near Sugarloaf.



**Oran B. Stanley**  
Omicron '31

Educator/Botonomist/  
Photographer  
Retired Professor  
and Advisor—  
Colgate University

**Oran B. Stanley** began his association with Kappa Delta Rho in 1928, a newly installed chapter at Butler University. He graduated from Butler, Magna Cum Laude, and earned his Ph.D. at Yale Graduate School. While at Yale, Oran was elected to Sigma Xi, Scientific Research Society, and Gamma Alpha, Science social fraternity.

Brother Stanley began his teaching career at Colgate University in 1934, which also began a four decade association with Delta Chapter. During World War II, he served as an Air Navigation Instructor for Navy pilots, and was public relations photographer for both Colgate and its various Navy units, which resulted in his election as an honorary member of Phi Delta Epsilon—journalism fraternity. Oran became a full professor in 1950. The "Maroon Citation" was presented to Oran by the Colgate University Alumni Corporation

for his contributions to the welfare of the college and his teaching excellence.

Brother Stanley participated in the complete "rehabilitation" of the Delta Chapter and was proud and pleased when his son, Gordon, pledged KDR. The "frosting on the cake" at Colgate was the occasion when a group of Biology majors and alumni pledged themselves to raise funds to memorialize three retiring faculty members who had served over 110 years, Oran the longest tenured of the three. Colored portraits were placed in the Olin Life Science Building, and response was such that the fund also covered acquisition of an electron microscope.

Mr. Stanley co-authored two textbooks, and is listed in "Who's Who in America," "American Men of Science," and "Who's Who in American Education." Oran and his wife Constance now reside in Sargentville, Maine.



**Richard R. DeWitt**  
Eta '49

Businessman  
President, International  
Nickel Company

**Mr. DeWitt** received a Bachelor of Science degree in metallurgical engineering from the University of Illinois in 1949 and has been President of International Nickel Inc. since October 1982. Prior to his appointment he had been Executive Vice-President of Inco Inc. since 1981, and Vice-President since 1980. Richard joined Inco in 1949 as a research metallurgist at the former Bayonne Research Laboratory. He transferred to the Nickel alloys section of Product Research and Development in New York in 1959, and was placed in charge of that section in 1962. Brother DeWitt became Assistant Group Manager, Nonferrous Product Development in 1967, and Group Manager in 1968. He was named Manager, Product Development in 1970; Manager, Sales Services in 1975; and General Manager, Marketing Services in 1976.

Brother DeWitt is a member of the American Society for Metals; the American Institute of Mining, Metallurgical and Petroleum Engineers, and the American Society for Testing and Materials. His favorite leisure activities are golf, tennis, and sailing, and he is a member of the Raritan Yacht Club, the Watchung Power Squadron, and the Warren Racquet Club.

Born in Chicago, Illinois, Richard is married to the former Rosemary A. Kett. They reside in Berkeley Heights, New Jersey, and have five children and five grandchildren.



**Harry E. Chesebrough**  
Mu '32

Businessman/Consultant  
Retired Vice President—  
Chrysler Corporation

**Harry E. Chesebrough** attended the University of Michigan, where he earned a B. S. degree in Mechanical Engineering in 1932. He earned an M. A. E. from Chrysler Institute of Engineering in 1934 and a Ph.D. in Engineering (Hon.) from the University of Michigan in 1957. Brother Chesebrough started his career with Chrysler Corporation in 1932 as a student engineer. In the following several years, he held positions as Manager—Transmission Development Laboratory, Manager—Road Test Operations and Experimental Development, and Manager—Air-craft Project. Moving right on up the Corporate ladder, he became Chief Engineer of the Desoto Division, the Dodge Division, and then Body Design and Engineering. In 1958, he became Vice President and General Manager of the Plymouth Division. During the years 1961 through 1973, he was V. P. Quality and Reliability—Worldwide, V. P. Director General—Chrysler France, V. P. General Manager—Chrysler Spain, and V. P. Special Assignment International (Japan).

Mr. Chesebrough was involved with several Scholastic Societies including Tau Beta Pi, Phi Kappa Phi, Sigma Xi, and Pi Tau Sigma.

During his career, Harry served as President of the Society of Automotive Engineers, a member and officer of the Engineering Society of Detroit, and was a member of the National Academy of Engineering. Other professional activities included serving as Director and President of the American Standards Association, Trustee of the Rockham Engineering Foundation, and on the Executive Committee for the University of Michigan 55M Campaign, and the College of Engineering Capital Campaign.

Mr. Chesebrough is married and resides in Bloomfield Hills, Michigan. Δ

## Ralph K. Gottshall Award . . .

. . . This year, the Executive Committee of the Board of Directors established a new award in the memory of Ralph K. Gottshall, Rho '27, to be presented to an undergraduate member or members for distinguished valor. The first recipients of this award are Michael Elgarten and John J. Francis, both of Rho Chapter, for their outstanding presence of mind and prompt response in giving life saving assistance to a fellow student at Lafayette, a member of Sigma Chi Fraternity, who suffered a massive heart attack while participating in a campus intramural event. The fraternity is very proud to know these men are members of our fraternity and can proudly say "these are our sons."

The award is named in memory of Brother Gottshall because of his long dedication and involvement to Lafayette College. Having been chairman of the Board of Trustees, Chairman of the Alumni Council, Lafayette College awarded him the honorary degree of Doctor of Science in 1958. Prior to his retirement in 1971, he served as President, followed by Chairman of the Board of Directors of Atlas Chemical Industries, Inc. During his life, he not only served as a director, but in many instances, as chairman of many Corporations, Foundations, and Associations, such as Manufacturers Hanover Trust Company, Federal Reserve Bank of Philadelphia, and the Bank of Delaware. During his life, he received many honors, such as the Joseph E. Bell, Alumni Distinguished Service Award from Lafayette College, the News-Journal Award for Distinguished Citizenship, and the Delaware Valley Council Award.

Although he was quite active in his life, he found time to remain a very loyal member to his chapter, Alumni Corporation and a long, dedicated supporter of the National Fraternity. It is the fraternity's extreme privilege to present this award to its first recipients, Michael Elgarten and John Francis, in memory of an extremely admirable member of Kappa Delta Rho Fraternity. Δ

## KAPPA DELTA RHO 1983-84 Outstanding Senior

In the past, our fraternity has honored one graduating member as our Outstanding Senior. Because of the outstanding resumes submitted the selection committee unanimously conceived this year to honor two seniors for the 83/84 award.



John F. Hill  
Lambda Alpha '84  
Gannon University

Major: English, GPA 3.5

CHAPTER OFFICES: Consul; IFC Representative; Chairman Rose Formal

CAMPUS INVOLVEMENT: Executive Board Member of Student Government; Student Representative of the Middle States Evaluation Committee; Chairman, Student Ombudsman Committee; University Leadership Seminars, only student speaker two semesters; IFC Greek Week Committee; Member Fraternity Task Force Committee.

AWARDS: University Award "Greek Medal of Honor" for outstanding campus fraternity member; "Who's Who Among Students in American Universities;" I.M. Swimming Champion; chapter "Dr. Donald Claypool Award" for Outstanding Senior.

John, better known as J.D., has accepted a scholarship to Law School and, because of his achievements and GPA, the fraternity has awarded him a special \$100 Scholarship.



Gerard R. Brew  
Omicron Alpha '84  
Rutgers University

Major: Economics/  
Political Science, GPA 2

CHAPTER OFFICES: Founding member, Portifex, Senior Advisor, Big Brother, Editor of the Chapter Petition.

CAMPUS INVOLVEMENT: Freshman, Sophomore, and Senior Class President; Student Government, Secretary (Sophomore year); President (Junior year); University Senator; Dean's Central Committee, three years; College Planning Committee; Student Life Committee; Student Activities and Housing Committee; Student Financial Aid Committee; Chairman of Judicial Committee, three years chairman; Yearbook Staff.

Gerard recently edited the fraternity's new Membership Recruitment Manual.

## KAPPA DELTA RHO 1983-84 Outstanding Pledge



Robert W. Friant, Jr.  
Omicron Alpha  
Rutgers University  
Sophomore

Major: Political Science  
and History, GPA 4.0

CAMPUS INVOLVEMENT: President of Resident Hall; University Senator; College Fellows; Student Government; Cultural Affairs Committee; Educational Policy Planning Committee; University Legislative Affairs Committee; Executive Committee of University Senate.

CHAPTER OFFICES: Pledge Vice President; KDR Miss Rutgers Pageant Committee.

## Grand Counsil Award

### OUTSTANDING Chapter

*Iota Alpha Chapter*  
University of Pittsburgh,  
Johnstown

## William I. Myers Award

### OUTSTANDING Scholastic Achievement

#### ★ FIRST PLACE

*Nu Alpha Chapter*  
Columbia University

#### SECOND PLACE

*Iota Alpha Chapter*  
University of Pittsburgh,  
Johnstown

## Floyd R. Baughman Award

### CHAPTER Of Achievement

on a Large Campus

*Omicron Alpha Chapter*  
Rutgers University

## Floyd R. Baughman Award

### CHAPTER Of Achievement

on a Small Campus

*Rho Chapter*  
Lafayette College

## SPECIAL RECOGNITION

The National Board of Directors, upon the recommendation of the Awards Chairman, Dr. Gerald Murray, take this opportunity to give special recognition to Brother Scott Mattravers, Sigma '84. Beginning in his undergraduate years at Sigma Chapter, Scott not only reorganized the chapter's newsletter, "SIGMA SCOOP," but through it helped to create a renewed fraternal spirit among his chapter's alumni. His efforts also resulted in outstanding increases in alumni volunteer and financial support. It is this type of enthusiasm, determination, and dedication which Scott has demonstrated beyond graduation that makes this award even more meaningful and special. We congratulate Scott on his efforts and are proud to present him with this award for OUTSTANDING ALUMNI INVOLVEMENT.

## Leo T. Wolford Award

### CAMPUS Involvement

on a Large Campus

#### ★ FIRST PLACE

*Omicron Alpha Chapter*  
Rutgers University

#### SECOND PLACE

*Nu Chapter*  
Indiana University

## Leo T. Wolford Award

### CAMPUS Involvement

on a Small Campus

#### ★ FIRST PLACE

*Iota Alpha Chapter*  
University of Pittsburgh,  
Johnstown

#### SECOND PLACE

*Lambda Alpha Chapter*  
Gannon University

## Gino A. Ratti Award

### Alumni Relations

#### ★ FIRST PLACE

*Nu Chapter*  
Indiana University

#### SECOND PLACE

*Lambda Chapter*  
University of California

## John L. Blakely Award

### OUTSTANDING Philanthropic Award

on a Large Campus

#### ★ FIRST PLACE

*Zeta Chapter*  
Penn State University

#### SECOND PLACE

*Eta Chapter*  
University of Illinois

## John L. Blakely Award

### OUTSTANDING Philanthropic Award

on a Small Campus

#### ★ FIRST PLACE

*Rho Chapter*  
Lafayette College

#### SECOND PLACE

*Iota Alpha Chapter*  
University of Pittsburgh,  
Johnstown

## Dr. Harold Osborn Award

**OUTSTANDING**  
Intramural Athletics

on a Large Campus

★ **FIRST PLACE**

*Mu Alpha Chapter*  
West Virginia University

**SECOND PLACE**

*Nu Chapter*  
Indiana University

## Dr. Harold Osborn Award

**OUTSTANDING**  
Intramural Athletics

on a Small Campus

★ **FIRST PLACE**

*Rho Chapter*  
Lafayette College

**SECOND PLACE**

*Kappa Alpha Chapter*  
Illinois State University

## Executive Director's Award

**OUTSTANDING**  
Rushing

JAMES MYERS

*Theta Alpha Chapter*  
Slippery Rock University

## Donald C. Wolfe Award

**BEST**  
Chapter Newsletter

*Beta Chapter*  
Cornell University

**BEST CONTENT**

*Mu Alpha Chapter*  
West Virginia University

**BEST PRESENTATION**

*Zeta Chapter*  
Penn State University

## Kristen Gano Presents Awards



Kristen Gano, KDR National Sweetheart, presents Chris Pine, Consul for Iota Alpha, with the Grand Consul Award for Outstanding Chapter (Univ. of Pittsburgh at Johnstown); Gerard Brew, Omicron Alpha, with the Floyd R. Baughman Award for Chapter of Achievement on a Large Campus (Rutgers); Michael Groman, Senior Tribune, Rho, with the Award for Chapter of Achievement on a Small Campus (Lafayette).

## \$500 Scholarship Michael S. Diamond

NU ALPHA CHAPTER  
Columbia University  
Political Science/Pre-med. 4.0/4

HONOR SOCIETIES AND AWARDS—Phi Beta Kappa, Dean's List (all semesters), Research Fellow Muscular Dystrophy Assoc. 1983, 1984 Governor Com. on Scholastic Achievement, Scholarship Award 1981-1984, Jacoby Presidential Scholarship 1983-84.

EXTRACURRICULAR ACTIVITIES—Columbia College Orientation Program and Sponsor Intramural soccer captain—St Lukes Medical Center emergency room volunteer.  
Chapter Activities—Treasurer, Philanthropy Chairman.

## \$300 Scholarship Charles J. Gatt, Jr.

RHO CHAPTER  
Lafayette College  
Chemical Engineering. 3.71/4

HONOR SOCIETIES—Tau Beta Pi, Dean's List  
EXTRACURRICULAR ACTIVITIES—varsity cross country (co-captain), varsity track, Lafayette College tour guide, WJRH Radio disc Jockey, Volunteers for Youth (Big Brother), Kappa Delta Rho/Beta Phi (Lafayette College) Dance marathon-prize committee chairman '83, executive committee '84  
Chapter Activities—Consul, Junior Rush Chairman

## \$200 Scholarship Michael S. Woronowicz

BETA CHAPTER  
Cornell University  
Mechanical Engineering. 3.71/4

HONOR SOCIETIES—Alpha Lambda Delta, Tau Beta Pi, Pi Tau Sigma, Dean's List (all semesters)  
EXTRACURRICULAR ACTIVITIES—Rifle Club, German Club, and Engineering Co-op Program  
Chapter Activities—Social Committee and Rush Committee.

## \$100 Scholarship Christopher Pine

IOTA ALPHA CHAPTER  
University of Pittsburgh at Johnstown  
Biology/Pre-dental. 3.70/4

HONOR SOCIETIES—Phi Eta Sigma, Presidential Scholar, Dean's list (Freshman).  
EXTRACURRICULAR ACTIVITIES—Law Advisor Board (Treasurer), Pre-professionals Society (Orthodontics).  
Chapter Activities—Consul, 1984 Rose Formal Chairman, Clothing and Supplies Chairman.

## \$100 Scholarship William J. Paris

ETA CHAPTER  
University of Illinois  
Political Science (Pre-Law). 4.28/5

EXTRACURRICULAR ACTIVITIES—Pre-Law Club, Students for Simon Committee, Young Democrats Organization, Founding Member of IFC—Order of Omega, Alcohol Awareness Committee.  
Chapter Activities—Pledge Class President, Philanthropy Committee, co-chairman Fall '83, Chairman Summer '84, Financial Committee, Social Committee, Senior Tribune—Rush Chairman.

## \$100 Scholarship Paul D. Adams

BETA CHAPTER  
Cornell University  
Mathematics/Computer Science. 3.55/4

HONOR SOCIETIES—Dean's List (Freshman)  
EXTRACURRICULAR ACTIVITIES—Ski Team, Big Red Marching Band, Cornell Wind Ensemble, Cornell Concert Band, Ithaca Concert Band.  
Chapter Activities—Athletic Manager, Social Chairman.



Left to Right – Back Row: Leonard Ross, Tom Mott, Nish Kocian, Al Sciacqua. Front Row: Seth Atamian, Joseph Jura, Bill Naman.

Recently a group of Upsilon Alumni in the Fresno, California area, met with the Executive Director to discuss the possibilities of not only organizing the Chapter Alumni, but the future re-establishing of the Chapter. This meeting was arranged through Brother Nish Kocian, '54, and because of his dedicated efforts, the occasion resulted in a homecoming celebration. Several members attending had not seen each other in many years.

Brother Tom Mott, '39, consented to be Chairman of the Alumni Reorganization and will be communicating with all alumni as to the future plans. The plans will hopefully assist Kappa Delta Rho in its return to the Fresno Campus and possibly coincide with university plans for future fraternity expansion.

Special thanks go to Brothers Kocian, Mott, and especially Joseph Jura and his family for entertaining the Executive Director during his visit.

## Alumni Urged to Return Data for Directory

All alumni should have received a request for the essential information required to assure complete data in the new alumni directory tentatively scheduled for release in 1985. We sincerely hope that everyone has replied.

Publication of the directory will be handled by Harris Publishing Company of White Plains, New York. This company is the sole authorized agent for the production and marketing of the directory, and assumes all financial obligation, including the compilation, editing, billing, and distribution of the volume and will cover its costs through individual book sales to alumni only. This plan will assure the publication of a professionally compiled volume.

During the next several months alumni will be contacted by telephone for verification of the information to be printed in the directory. At that time, and at that time only, they will be asked if they wish to purchase a copy. The number of directories printed will be based on the number of advance orders received via the phone calls.

Alumni who have not returned their questionnaires and are not reached by telephone by the Harris firm will be listed in the directory with the address, if current, provided by alumni records. If you have not received your questionnaire, please notify us in writing.

Kappa Delta Rho, Inc.  
331 South Main St.  
Greensburg, PA 15601

## NOTES FROM ALUMNI

Dear Brother Stohl:

First, I want to thank you for your superlative efforts in building up our fraternity, Kappa Delta Rho.

Receiving your invitation to become an active alumnus in some capacity, I am, indeed, sorry that I can not volunteer.

A member of Iota, I graduated from Bucknell in 1913, seventy one years ago. Naturally, I am aged extremely so. My actual age today is 93 years, nine months, six days.

Probably, I am one of the very oldest members of our fraternity. My wife died in 1969. Since then, I have been living alone, fifteen tedious years.

I enclosed a check; I am sorry it can not be more.

Fraternally,

Charles L. Sanders  
76 Walnut Street  
Mifflensburg, PA 17844

## Two Chapters Join Rank

### Rutgers chartered

After nearly a year and a half of determined and enthusiastic persistence, 65 men were initiated into the Omicron Alpha Chapter of Kappa Delta Rho at Rutgers University. Overcoming a community that was hostile to new fraternities, an IFC that had not taken a new fraternity in 20 years, and no existing housing available for new chapters, the group rose to the top of the Rutgers Greek hierarchy with innovative ideas and by bringing friendly competition the system had not seen in years.

April 7, 1984, was therefore a very special and exciting day for these dedicated men. Nu Alpha Chapter at Columbia University provided the installation team led by Howard Hoffen, Chapter Consul. The ceremony took place at St. Michael's Episcopal Chapel. A reception was then held in honor of the new Omicron Alpha Chapter, followed by a banquet at the Pines Manor in Edison, New Jersey. Special guests and keynote speakers included Mrs. Terry Reilly, Dean of Fraternity Affairs, and her husband, Thomas, Robert D. Lynd, Grand Consul, Donald L. Stohl, Executive Director, and his wife Kaye, and Vincent J. Thompson, Director of Chapter Services.

The men of Delta Phi Fraternity welcomed the new brothers and their guests, and the women of Sigma Kappa and Phi Sigma Sigma sororities, into their Chapter Home for a celebration to culminate the day's festivities.

### Toledo chartered

On May 18, 1984, the newest chapter of Kappa Delta Rho was chartered at the University of Toledo. The ceremony marked the beginning of Pi Alpha Chapter and the initiation of 50 young men who had begun their quest for chapter status just eight months prior.

A group of interested men first met with Executive Director, Donald L. Stohl on September 22, 1983. By October 30, the group had grown to the required membership and were inducted as a Provisional Chapter of the Fraternity. The following months brought a new awareness of fraternity life to the campus. KDR, through their stressing of Greek unity, participated with fraternities and sororities alike in a number of social and civic functions. They completed two very successful community service projects, and sponsored two functions for their parents.

In April, the group petitioned the National Fraternity for chapter status and was unanimously accepted by the National Executive Committee and the chapters.

The sponsoring chapter, Lambda Alpha, from Gannon University, provided the installation team conducted by Chapter Consul, Ray Shively. The event was held at the Meadowbrook, in Toledo, and was followed by a reception and banquet with local alumni guests including Donald L. Stohl, Zeta '53; James F. Edgeworth, Psi '56, Alumnus Advisor; David J. Carson, Zeta '60; and James A. Robarge, Delta '60. Special guests of honor included Dan Abrahamowitz, Assistant Dean of Student Activities, and Scott Reifkowski, Toledo IFC Advisor.

The evening was capped off with the chapter's first very successful and enjoyable Rose Dance. Δ

## Provisional Chapters Inducted at . . .

**BRYANT COLLEGE:** Upon the recommendation of undergraduate member John Honigman at Rutgers University, the National Office contacted Terry O'Donnell at Bryant College in Smithfield, Rhode Island.

An initial visit was made by John Burke, Z '82, Director of Expansion, and Vincent J. Thompson, Eta '83. The forty-man group soon completed their provisional chapter requirements including acceptance by the College and Interfraternity Council and was inducted as a Provisional Chapter on April 28, 1984.

The induction team from Alpha Chapter included Peter Lamson, Consul, John Van Dorsey, Andrew Waugh, and Patrick O'Donoghue.

**HOFSTRA UNIVERSITY:** Hofstra University, located in West Hempstead, Long Island, New York, is the home of the latest Provisional Chapter of Kappa Delta Rho. A group of students at Hofstra contacted the National Office regarding affiliation with our fraternity. Vince Thompson, Chapter Leadership Consultant, accompanied by a delegation of members from Omicron Alpha (Rutgers), met with the group to explain the expansion process. The group notified the office that they had chosen KDR and proceeded to increase their membership to the required size, and were administered the Provisional Chapter and Pledging Ceremony on May 11, 1984. Rutgers, the sponsoring chapter, provided the induction team, headed by John Taylor, Consul. Δ

## Expansion of National Office Staff



James D. Winters

Joining the staff this fall as a Chapter Leadership Consultant is James D. Winters, Theta '84. His primary duties will be in the area of chapter expansion. He will also be assisting with the general operations of the national office.

Jim brings to the staff a diversified background in fraternity affairs. As an undergraduate, he served as Praetor, athletic chairman, and Quaestor for two years. During his five active years with Theta, he witnessed great advances throughout the National Fraternity. His Greek experience did not stop when he was away from school. Jim is the son of John D. Winters, Jr., Theta, '56; his mother is a Delta Gamma from Purdue, and his sister is a Chi Omega from Northern Illinois University. He is a strong supporter of alumni participation in fraternity affairs at both the local and national level, and the basic idea that Fraternity is for life.

Brother Winters majored in Mathematics at Purdue University and looks to technical sales or operations management as a career. Future education plans include a masters degree in business administration. Jim is an avid golfer and skier and enjoys the outdoors. We look forward to his assistance in the coming year. Δ

Latest Expansion Report  
**NEW PROVISIONAL CHAPTERS**  
**COLGATE UNIVERSITY**  
Hamilton, New York  
November 9, 1984  
(re-affiliation, Delta Chapter)  
**RADFORD UNIVERSITY**  
Radford, Virginia  
December 7, 1984

# CHAPTER ETERNAL

## BETA CHAPTER

Cornell	
Roger B. Corbett, O. H.	'22
Las Cruces, NM	
Robert H. Gleckner	'31
Pelham Manor, NY	
Willard Gregory	'36
Fayetteville, PA	
Mannon B. McPherson	'17
Morrisville, NY	
Edwin L. Smith	'23
Margate, FL	
Herman Southworth	'30
State College, PA	
Clarence W. Walkley	'21
Sebastopol, CA	
Fred R. Walkley	'17
Perry, NY	

## GAMMA CHAPTER

S.U.N.Y., Albany	
Myndert M. Crounse	'39
East Islip, NY	
Dr. William M. French	'29
Pompano Beach, FL	
Francis E. Griffin	'28
Niskayuns, NY	
Fred Parker	'21
Pittsford, NY	

## DELTA CHAPTER

Colgate	
Robert G. Barnum, Jr.	'33
Old Greenwich, CT	
Dr. Clarence E. Craw	'29
Lincolnton, NC	
Don Phillip Hansen	'45
Marlton, NJ	
William D. Mize	'54
Fairview Park, OH	
Guy Geoffrey Nicosia, Jr.	'45
Sarasota, FL	

## EPSILON CHAPTER

Franklin	
George A. Barnett, M.D.	'17
Grand Rapids, MI	
Max C. Hardin	'38
Franklin, IN	
Claude M. Keesling	'24
Moraga, CA	
Harold E. List	'24
Indianapolis, IN	

## ZETA CHAPTER

Penn State	
Clarence H. Fickinger	'22
Stuart, FL	

## ZETA CHAPTER (continued)

Stanley F. Harkins	'28
Hershey, PA	

## ETA CHAPTER

Illinois	
Charles J. Boorkman	'33
Long Beach, CA	
Jesse R. Johns	'21
Chandler, OK	
Dr. John H. Schacht	'35
Iowa City, IA	

## THETA CHAPTER

Purdue	
W. Oran Osbon	'26
Hermitage, TN	
Dale O. Tomey	'22
Bedford, IN	

## IOTA CHAPTER

Bucknell	
Bruno F. Heine	'55
Southbury, CT	
James J. Michener	'29
Duncannon, PA	
Robert S. Moore	'18
Geneva, NY	

## KAPPA CHAPTER

Ohio State	
Harry B. Chalfant	'23
Steubenville, OH	
Clarence R. Hosey	'22
Zanesville, OH	
Harlan R. Stevens	'30
Ann Arbor, MI	
Daniel E. Tritten	'29
Warren, OH	

## LAMBDA CHAPTER

Univ. of California	
William J. Fitzgerald	'50
Grand Canyon, AZ	
Thomas Polk Williams, Jr.	'38
Santa Cruz, CA	

## MU CHAPTER

Michigan	
Arnold G. Andersen	'27
N. Muskegon, MI	
Kenton M. Bear	'29
La Porte, IN	
L. B. Chalfant	
Kissimmee, FL	
Lester V. Colwell	'35
Cape Coral, FL	
Dr. Stanley H. McGilliard	'31
Upper Sandusky, OH	

## MU CHAPTER (continued)

James W. Shew	
Comstock Park, MI	
Truman C. Smith	'35
East Lansing, MI	

## NU CHAPTER

Indiana	
Andrew R. Atkinson	'33
Hartford City, IN	

## XI CHAPTER

Colby	
Leonard M. Rushton	'33
Methuen, MA	
Douglas A. Wheeler	'31
New Braunfels, TX	

## OMICRON CHAPTER

Butler	
R. Kent Dorman	'27
Indianapolis, IN	

## PI CHAPTER

Gettysburg	
A. L. Flenner	'20
Wilmington, DE	

## RHO CHAPTER

Lafayette	
Robert J. Jones	'27
Lewistown, PA	
Donald G. Stillman	'36
Potsdam, NY	

## SIGMA CHAPTER

Oregon State	
Everett C. Cornett	'40
La Grande, OR	
Marcellus A. Palmer	'39
Burns, OR	

## TAU CHAPTER

Carnegie-Mellon	
Frank A. Stiles	'25
Granby, MA	

## OMEGA CHAPTER

Indiana University of PA.	
Herbert S. Wardrop	'73
Indiana, PA	

## DIRECTORS EMERITUS

O. D. Roberts, Eta '36  
10415 Tropicana Circle  
Sun City, AZ 85351  
Monroe T. Smartt, Sigma '28  
1747 W. 27th Street  
San Pedro, CA 90732  
E. Mayer Maloney, Nu '36  
4038 Monaca Drive, Apt. B  
Indianapolis, IN 46220

## FOUR YEAR TERM DIRECTORS

President—(1984)—Robert D. Lynd,  
Iota '67  
1906 Joliet Court  
Alexandria, VA 22307  
(703) 765-9240  
Executive Vice President—(1986)—  
Richard DeBernardo, Alpha Alpha  
'75  
407 Lakeshore Dr.  
Seabrook, TX 77586  
(713) 334-5607  
Treasurer—(1986)—Edward K.  
Hoffman, Jr. Iota '68  
3575 Park Terrace  
Horseheads, NY 14845  
(607) 796-9022  
Vice President/Development—  
(1984)—Robert D. Corrie, Beta '53  
10 Ash Street  
Garden City, NY 11530  
(516) 747-7560  
Vice President/Finance—(1986)—  
Kenneth R. Gesner, Xi '53  
314 Pearsall Avenue  
Ridgewood, NJ 07450  
(201) 652-4849  
Gerald L. Murray, Theta '66 (1984)  
R.R. 2, Box 12, Overlook Drive  
Daleville, IN 47334  
(317) 378-0926  
Richard W. Nolan, Theta '59  
1030 E. Genesee  
Syracuse, NY 13210  
(315) 475-0896  
James F. Edgeworth, Sr. Psi '56  
(1986)  
4515 Eastway Drive  
Toledo, OH 43612  
(419) 476-6627  
John P. Burke, Zeta '82 (1984)  
1644 Springfield Avenue  
New Providence, NJ 07974  
(201) 464-3422  
H. Wayne Cowan, Nu Alpha '83  
320 S. Scott  
Mt. Pulaski, IL 62548  
(217) 792-5275

## EXECUTIVE STAFF

Executive Director—  
Donald L. Stohl, Zeta '53  
331 South Main Street  
Greensburg, PA 15601  
(412) 838-7100  
Home: 315 N. Maple Avenue.  
Greensburg, PA 15601  
Chapter Leadership Consultants—  
Vincent J. Thompson, Eta '83  
James D. Winters, Theta '84  
Home: 418 South Maple Avenue  
Greensburg, PA 15601  
(412) 834-3762  
Director Of Alumni Affairs—  
Peggy Zimmerman  
Office Manager—Sue Balash

## TWO YEAR TERM DIRECTORS

Kenneth A. Beckley, Nu '62 (1984)  
3727 Briarwood Drive  
Indianapolis, IN 46240  
(317) 849-5173  
Michael Howard, Mu Alpha '85  
552 Spruce Street  
Morgantown, WV 26505  
(304) 292-9217  
\*Rick Longenecker, Pi Alpha '86  
4233 Bowen  
Toledo, OH 43613  
(419) 475-2226  
Robert Pogarek, Kappa Alpha '85  
207 W. Locust  
Normal, IL 61761  
Louis Spina, Mu Alpha '83  
TSC #1, General Delivery  
Loring AFB, ME 04751

## SCHOLARSHIP CHAIRMAN

Peter W. Martin, Beta '61  
630 Snyder Hill Road  
Ithaca, NY 14850

## NATIONAL CHAPLAIN

The Very Rev. Harold Lemoine, Xi  
'32  
241-05 145th Avenue  
Rosedale, NY 11422

## LEGAL ADVISORS

Thomas M. McGlasson, Nu '65  
2510 Deep Well Court  
Bloomington, IN 47401  
Robert B. Halkowich, Iota '71  
26 Hampton Key  
Williamsburg, VA 23185

## CHAPTERS

### ALPHA

Peter Lamson  
Kappa Delta Rho  
D-52  
Middlebury College  
Middlebury, VT 05753  
802/388-9002

### BETA

Barry Weber  
Kappa Delta Rho  
312 Highland Road  
Ithaca, NY 14850  
607/257-7587

### EPSILON

Hollace Chastain, II  
Kappa Delta Rho  
740 E. Jefferson Street  
Franklin, IN 46131  
317/736-8441

### ZETA

Wayne Breisch  
Kappa Delta Rho  
420 E. Prospect Avenue  
State College, PA 16801  
814/238-7343

### THETA

Scott Goodrich  
Kappa Delta Rho  
1134 Northwestern Avenue  
W. Lafayette, IN 47906  
317/743-9648

### ETA

Jerry Robinson  
Kappa Delta Rho  
1110 South Second Street  
Champaign, IL 61820

### IOTA

David Sheaffer  
Kappa Delta Rho  
College Hill  
Lewisburg, PA 17837  
717/524-1525

### LAMBDA

Mark Morey  
Kappa Delta Rho  
2739 Channing Way  
Berkeley, CA 94704  
408/256-2736

### NU

Mitch Bunner  
Kappa Delta Rho  
1503 E. Third Street  
Bloomington, IN 47401  
812/339-1411

### RHO

Charles Gatt  
Kappa Delta Rho  
Lafayette College  
Easton, PA 18042  
215/252-9566

### SIGMA

Fred Wist, II  
Kappa Delta Rho  
140 NW 23rd Street  
Corvallis, OR 97330  
503/752-7100

### PSI

Andy Ripic  
Kappa Delta Rho  
Lycoming College  
Williamsport, PA 17701  
717/322-9193

### OMEGA

Jeff Carey  
Kappa Delta Rho  
294 South Seventh Street  
Indiana, PA 15701  
412/463-9900

### BETA ALPHA

Larry Reinhauz  
Kappa Delta Rho  
Hillwood Commons  
C.W. Post Center, Box 019  
Greenville, NY 11548  
516/629-1237

### ETA ALPHA

Bob Burgess  
Kappa Delta Rho  
Robert Morris College, Box 3  
Coraopolis, PA 15108  
412/264-1805

### THETA ALPHA

Bruce Milavec  
92 Keister Apts.  
Slippery Rock, PA 16057  
412/794-2463

### IOTA ALPHA

Chris Pine  
Kappa Delta Rho  
P.O. Box 1200, Box 394  
University of Pgh., Johnstown  
Johnstown, PA 15907  
814/266-7427

### KAPPA ALPHA

R. John Muench  
Kappa Delta Rho  
207 W. Locust  
Normal, IL 61761

### LAMBDA ALPHA

Ray Shively  
201 W. Fourth Street  
Apt. 12  
Erie, PA 16507

### MU ALPHA

Don Meador  
Kappa Delta Rho  
552 North Spruce Street  
Morgantown, WV 26505  
304/292-9217

### NU ALPHA

Howard Hoffer  
Kappa Delta Rho  
548 W. 114th Street  
New York, NY 10025  
212/316-3438

### OMICRON ALPHA

John Taylor  
Kappa Delta Rho  
309 Bishop House  
College Avenue  
Rutgers University  
New Brunswick, NJ 08903  
201/932-1555

### PI ALPHA

Rick Longenecker  
Kappa Delta Rho  
4233 Bowen  
Toledo, OH 43613  
419/475-2226

## PROVISIONAL CHAPTERS

### TEMPLE

Tom Abbott  
1618 South Ninth Street  
Philadelphia, PA 19148  
215/467-4705

### BRYANT

Neil Rosen  
Kappa Delta Rho  
Bryant College  
Smithfield, RI 02917  
401/232-4188

### HOFSTRA

Andrew Cohen  
Kappa Delta Rho  
The Netherlands  
Hague House, Room 324B  
Hofstra University  
Hempstead, NY 11550  
516/538-7578

### LOCK HAVEN

Kevin Lafferty  
Kappa Delta Rho  
220 West Main Street  
Lock Haven, PA 17745  
717/748-9946

### COLGATE UNIV.

Karl Blumenburg  
Colgate University  
Hamilton, NY 13346

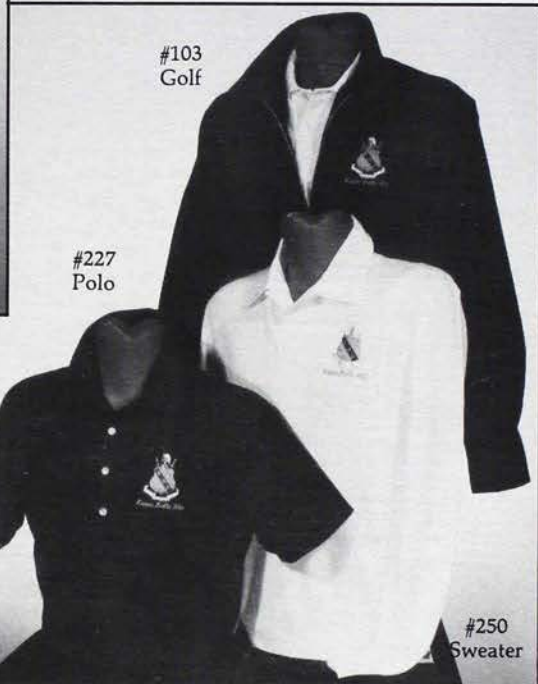
### RADFORD UNIV.

Kenneth Weaver  
Radford University  
Radford, VA 24142

# MERCHANDISE MART

## COAT OF ARMS GROUP

**Polo Shirt:** All cotton knit "LaCoste" type mesh shirt. Soft knit club collar, sleeves finished with ribknit cuffs, side seams finished with 4" hemmed slits for wearing in or out, with tail panel longer than front. Top quality from "Cross Creek." Available in navy or white. Sizes S,M,L,XL \$25.00 **Sweater:** Midweight V-Neck long-sleeve sweater of acrylic yarn, embroidered Coat-of-Arms. Available in navy, bone. Sizes S,M,L,XL \$24.00 **Golf Jacket:** Permanent press, polyester/cotton poplin, raglan sleeves, two button fog collar, slash pockets, zippered front and buttoned cuffs. Available in navy and white. Sizes S,M,L,XL \$23.00



## V.I.P. GROUP

**Top: (Left to Right) T-Shirt:** 50/50, orange only with navy silk screened Greek letters. Sizes S,M,L,XL \$6.00 **Hooded Sweatshirt:** 50% cotton, 50% polyester, heavy weight knit sweatshirt with stitched orange letters. Navy only. Sizes S,M,L,XL \$16.00 **Rugby Shirt:** Authentic 100% cotton heavyweight rugby shirt, rubber buttons, monogrammed white Greek letters on orange and blue striped shirt. Sizes S,M,L,XL \$32.00

**Bottom: (Left to Right) Football Shirt:** 70% cotton, 30% polyester, white only with navy trim. Double stitched navy over orange letters. Sizes S,M,L,XL \$15.00 **Golf Shirt:** 50/50, club collar, ribknit cuffs, white with stitched blue letters or navy with stitched orange letters. Sizes S,M,L,XL \$15.00

Please Ship To:

Name \_\_\_\_\_ Chapter \_\_\_\_\_  
 Street \_\_\_\_\_  
 City \_\_\_\_\_ State \_\_\_\_\_ Zip \_\_\_\_\_  
 Phone No. \_\_\_\_\_

Order Through:

Kappa Delta Rho, Inc.  
 331 South Main St.  
 Greensburg, PA 15601

Quantity	Style Number	Description	Unit Price	Total

Finger Size for Rings ☐

Your check must accompany the order.

Net Sale  
 Shipping Insurance  
 Total

2.00



## LAVALIERES

- J-11 Staggered letters  
with 18" chain .....\$18
- J-12 Vertical letters  
with 18" chain .....\$18
- J-13 Circle with 18" chain .....\$18
- J-14 Heart with 18" chain .....\$18

## RECOGNITION PINS

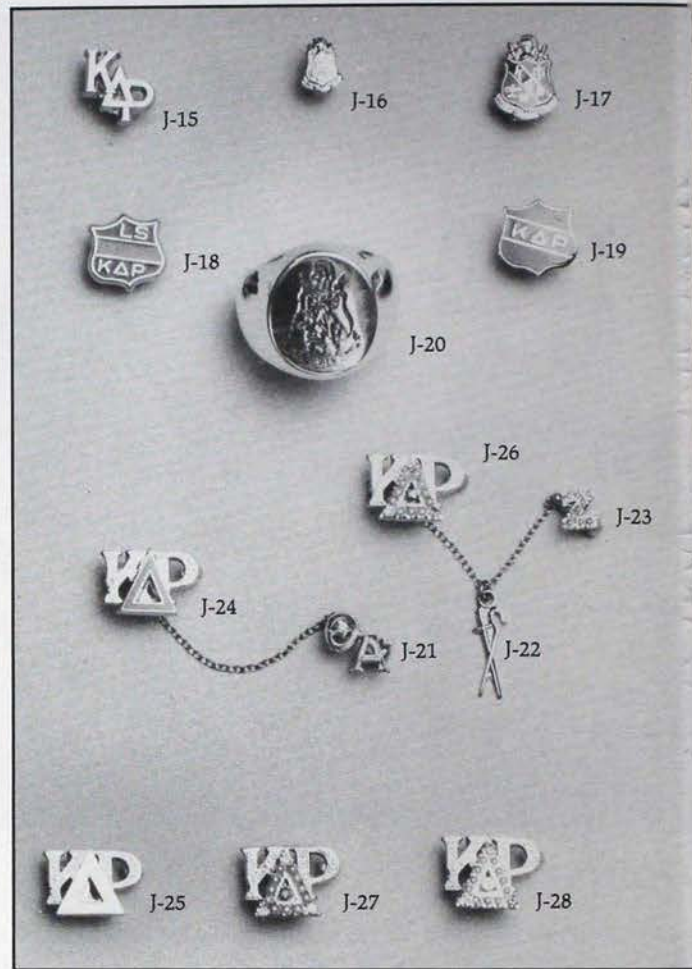
- J-15 Monogram .....\$2.50
- J-16 Miniature  
Coat of Arms .....\$4.50
- J-17 Enameled Orange &  
Blue Coat of Arms .....\$4.75
- J-18 Little Sister Pin .....\$2.50
- J-20 Signet Ring with Incised  
Coat of Arms  
10K Gold .....\$200.00  
Sterling Silver .....\$55.00
- J-19 Pledge Pin .....\$2.50

## FRATERNITY BADGES

- J-24 Chased K & P,  
Blue Enameled Delta ...\$14.50
- J-26 Chased K & P,  
with Crown set Pearl  
Delta, Ruby Points,  
Diamond Center .....\$75.00
- J-25 Chased K & P,  
Plain Delta .....\$13.50
- J-27 Chased K & P,  
with Crown set Pearl  
Delta, Ruby Points  
& Center .....\$50.00
- J-28 Chased K & P,  
with Crown set Pearl  
Delta, Sapphire  
Points & Center .....\$50.00

## CHAPTER RECOGNITION GUARDS

- |                          | Single Letter | Double Letter |
|--------------------------|---------------|---------------|
| J-21 Plain               | \$11          | \$13 (shown)  |
| Chased                   | \$12          | \$14          |
| J-23 Crown               |               |               |
| Set Pearl                | \$28 (shown)  | \$41          |
| J-22 Officer Recognition |               |               |
| Dangle                   |               | \$7.50        |



All badges, guards, lavalieres available in 10K yellow gold, contact National Office for price information.

## Burr, Patterson & Auld Company

Quality of Product  
Promptness of Service  
Fairness of Price

## The Quill & Scroll

Kappa Delta Rho, Inc.  
331 South Main Street  
Greensburg, Pennsylvania 15601

Non-Profit Organization  
U.S. POSTAGE  
PAID  
Greensburg, PA 15601  
Permit, No. 653