



CONVENTION
KV
BETA
AUG 24-27

May 1966 THE QUILL & SCROLL of Kappa Delta Rho

BULLETIN BOARD

A page of topical news items, some
printed before, some new . . .
all pertinent to our readers

Mutual Separation with L. A. Colony

The National Fraternity has informed the National Interfraternity Conference that a mutual separation has been effected with our Los Angeles Colony. Lack of alumni support, plus poor undergraduate leadership in a commuting atmosphere, made future installation prospects improbable.

Bradley Petition Received

The National Fraternity has received a petition from our Bradley Colony for Chapter status. Voting upon this petition by the Directors and the Chapters is in progress. Bradley Colony was founded in September 1962 and the members feel their efforts have now progressed to the point where they should prove acceptable to the National. As soon as the *Quill & Scroll* is informed of the results of the vote, full coverage will be given.

Lambda Scholarship Winners

The February issue asserted that Beta chapter would be the winner of the scholarship cup based upon incomplete tabulations. Since publication of that issue, revised standings show that Lambda has achieved that distinction, with a healthy +12.35 index. The table with latest revisions, including Lambda, Xi and Omega, is repeated below:

Chapter	AFA	AMA	Rank	Men	Ave.	Ind.
Alpha	77.18	76.72	2/7	43	78.70	+ 8.51
Beta	77.35	77.82	1/50	60	80.24	+10.91
Delta	2.3430	2.3593	5/14	70	2.4840	+ 7.60
Epsilon	2.247	2.227	4/4	53.5	2.157	- 3.95
Zeta	2.440	2.502	36/47	57	2.342	-10.68
Eta	3.481	3.532	32/51	32.5	3.408	- 8.45
Theta	4.335	4.348	37/38	48.5	4.119	-13.86
Iota						
Kappa	2.398	2.397	23/37	8	2.370	- 1.68
Lambda	2.507	2.410	6/42	37	2.6064	+12.35
Nu	2.413	2.416	23/28	82.5	2.259	- 9.91
Xi	2.325	2.281	2/10	49	2.405	+ 7.21
Pi	2.440	2.459	4/13	50.5	2.466	+ .45
Rho	76.82	76.57	10/19	39.5	76.59	+ .09
Sigma	2.54	2.51	6/32	63	2.61	+ 6.71
Psi						
Omega	2.353	2.124	7/7	40.5	2.210	+ 4.58
A. A.						
B. A.						
Bradley	4.458	4.559	8/14	17	4.466	- 2.70

Mail Requested

Fraternity editors are all pretty much in the same boat. Few of us have staffs to assist in details. Few of us are able to spend as much time as we would like "out in the field,"

prowling for stories and digging up the kind of information we feel our particular audience should have. We must rely on three sources of information primarily: material from the national office; material we can route out of our correspondence; or over-the-transom articles. This is a major handicap which can only be alleviated by more spontaneous response from our readers. Don't hesitate to send us praise or criticism, ideas for changes in the magazine, possible leads for articles, or actual articles, themselves. This issue contains a Readership Survey which is an excellent place to start. The more mail we receive containing responses to this survey, the better we will be able to serve you in the future.

Employment Possibilities

Our National Fraternity Headquarters is interested in hearing from members who would be interested in working full or part-time for the fraternity. Positions are available from time to time which can be rewarding and interesting for those who can qualify. Direct your inquiries to Executive Secretary A. Lawrence Barr, Kappa Delta Rho, Inc., 481 North Dean St., Englewood, N. J. 07631.

Fifty-Fifth Convention at Cornell University

The 55th National Convention of Kappa Delta Rho will convene on August 24th at Beta Chapter, 312 Highland Road, Ithaca, N. Y. The Convention Theme will be, "Alumni: the backbone of a strong KDR." Tentative details, subject to change as circumstances require, follow:

Wednesday, August 24th

An Open House at Beta chapter. This is your registration point and an opportunity to get acquainted with other delegates and alumni.

Thursday, August 25th

Breakfast is planned at the Straight followed by a kick-off speech. After lunch in the Elmhirst Room, workshops will be held to exchange ideas on such topics as alumni relations, rushing, social programs, publications, etc. Dinner will be catered at the House and will be followed by a talk on the history of KDR. George Shaw and Ivan Hager, who were in the 1910 Pledge Class at Middlebury, will be participating. In addition, the new initiation will be demonstrated.

Friday, August 26th

The annual business meeting will take up most of the day. Friday night there will be a banquet in the Statler Ballroom with a prominent speaker giving an after-dinner speech. A meeting of the new directors, who were elected at the earlier business meeting, will conclude the evening.

Saturday, August 27th

In the morning there will be workshops for Consuls and Quaestors. All those not involved in these workshops are free to look around campus, talk with old friends and professors, or sleep, depending on their condition after three days of conventioning and the banquet Friday night. There will be a picnic lunch at Taughannock Falls which will informally end the convention.

Alumni, regardless of chapter, are invited to attend the entire Convention, but if this should prove to be impossible, we especially would like to see a wide representation at the Friday evening banquet.

Please write Mr. John Miers, 312 Highland Road, Ithaca, N. Y., Convention Committee Chairman, if you would like him to reserve accommodations for you. He would also like to know how many to expect at the banquet, so please notify him if you wish to attend. Use the coupon below, and act promptly so that the committee will be able to make adequate plans. ☐

Mr. John Miers, Convention Chairman
KAPPA DELTA RHO FRATERNITY
Beta Chapter, 312 Highland Road
Ithaca, New York 14850

There will be _____ men and _____ women in my party attending the 55th National Convention.

☐ We expect to stay throughout the entire Convention.

☐ We will stay only for the following days:

_____, _____, _____.

☐ We will need accommodations for these nights:

_____, _____, _____.

(If wives and daughters are attending, please specify type of room desired) _____

☐ We will attend the Friday evening banquet.

Name _____ Chapter _____

Address _____ Year Grad. _____

City _____ State _____ Zip Code _____

Telephone _____

THE

KAPPA DELTA RHO FRATERNITY

Founded at Middlebury on May 17th,
1905 by *George E. Kimball, Gino A. Ratti,
Chester M. Walch, *Irving T. Coates,
*John Beecher, Thomas H. Bartley, *Ben-
jamin E. Farr, *Pierce W. Darrow, Gideon
K. Norton and Roy D. Wood.
*Deceased

THE QUILL & SCROLL

Business office, Oprandy Building,
481 N. Dean St., Englewood, N.J. 07631
Editorial office, Box 529 R.D. 1,
Macungie, Pa. 18062

Advertising Director—Mr. Murray Martin
315 East 56th St. N. Y. N. Y. 10021
Telephone (212) 535-8493

Publication Office—Modern Mailers, Inc.,
3304 Arch St., Philadelphia 4, Pa.

The *Quill and Scroll* is published four
times a year, in February, May, September
and November.

Second class postage paid at Englewood,
N.J., and at additional mailing offices. Sub-
scriptions are available only to life members
of the fraternity at \$25.00 each.

Notice of change of address, giving both
old and new address should be forwarded
at least forty days before date of issue.

All manuscripts and correspondence sub-
mitted for publication should be addressed
to the Editor, Charles F. Beck, R.D. No. 1,
Macungie, Penna., 18062. Photographs
should be sharp, glossy prints.

Closing dates for editorial copy: February
issue, January 1st; May issue, April 1st;
September issue, July 1st; November
issue, October 1st.

Print run this issue: 9,000

member of the national
interfraternity conference

page two
the quill and scroll



president



vice president



treasurer



exec. secretary



editor



volume lxxii, no. 2
may 1966

QUILL AND SCROLL OF KAPPA DELTA RHO

Fifty-fifth Convention at Cornell.....	1
Conventiontime can be Vacationtime.....	3
Portfolio of Scenic Cornell and the Finger Lakes.....	4-15
Motions to be voted upon.....	16
Editorial Forum.....	17
New Chapter Financial Manual & SCAP.....	18
Professional Directory.....	19
Mail Call.....	20
Weldon Powell Professorship.....	20
On Campus.....	21
Life Around Us, <i>Percy E. Fellows</i>	22
Service Centre.....	23
Should a Student Join a Fraternity?.....	24
The Annual Loyalty Fund Statistics.....	25
The Sounding Board, <i>A. Lawrence Barr</i>	28
A Readership Survey.....	28A, B
Alumni Worldwide.....	29
Chapter Eternal.....	30
Family Tree Summary.....	30
Bulletin Board.....	Cover 3

Cover—Taughannock Falls, where the Convention will conclude
with a picnic lunch.

Conventiontime can be Vacationtime

For 1966 the National Convention of Kappa Delta Rho again returns to Ithaca, the site of the first convention over fifty years ago. Those present at that first convention would marvel at both the change and the lack of change of "Cornell's little town."

Ithaca today is a small city that has far exceeded its role of a college town. It has grown prosperous in its own right with such industries as National Cash Register and Morse Chain. In addition to the giant on the hill, Cornell, there is Ithaca College. Its strengths in Drama, Music and Physical Education complement Cornell in serving the cultural needs of the community.

Cornell too has changed. No longer is it the struggling institution in the back woods. The University today is composed of 13 colleges ranging from Agriculture to Hotel Administration. There are over 80 buildings on campus and many more both in Ithaca and throughout the countryside.

Despite the changes, the tempo and the major attractions of Ithaca have largely survived. Walking down State

Street one can still sense some of the unhurried nature of Ithaca past. On the whole the students have come to enjoy the courtesy and personal service that seems to mark the philosophy of the Ithaca merchant.

Most pleasing of all is the beauty that still surrounds the town. Located at the foot of Lake Cayuga in the lovely Finger Lakes Region of New York State, Ithaca is a photographer's paradise. From the hills surrounding Ithaca come hundreds of streams and creeks. Many in their twisting, churning fall to the valley below have cut ravines and gorges into the underlying bedrock. Of special note are Buttermilk, Enfield, Ithaca and Taughannock Falls. Taughannock, meaning "falls in the forest," is the tallest straight fall waterfall in the East. There are miles of walks and hundreds of sites for a picnic lunch.

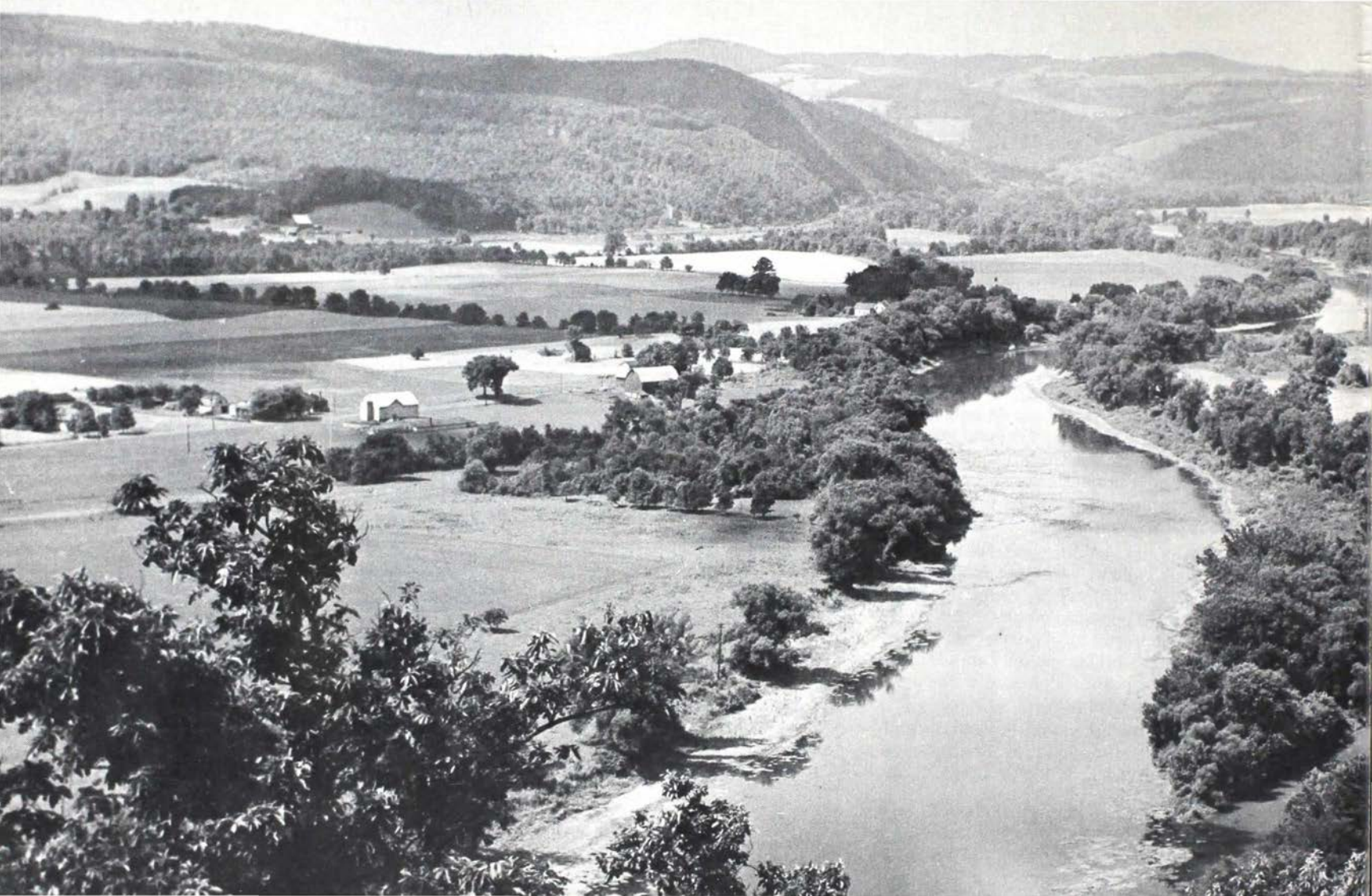
Cornell, not to be left out of the scenery business, is bounded on both the north and the south by two of Ithaca's major gorges. Footpaths paralleling the creeks deep within their gorges provide a place of refuge from the hectic pace of uni-

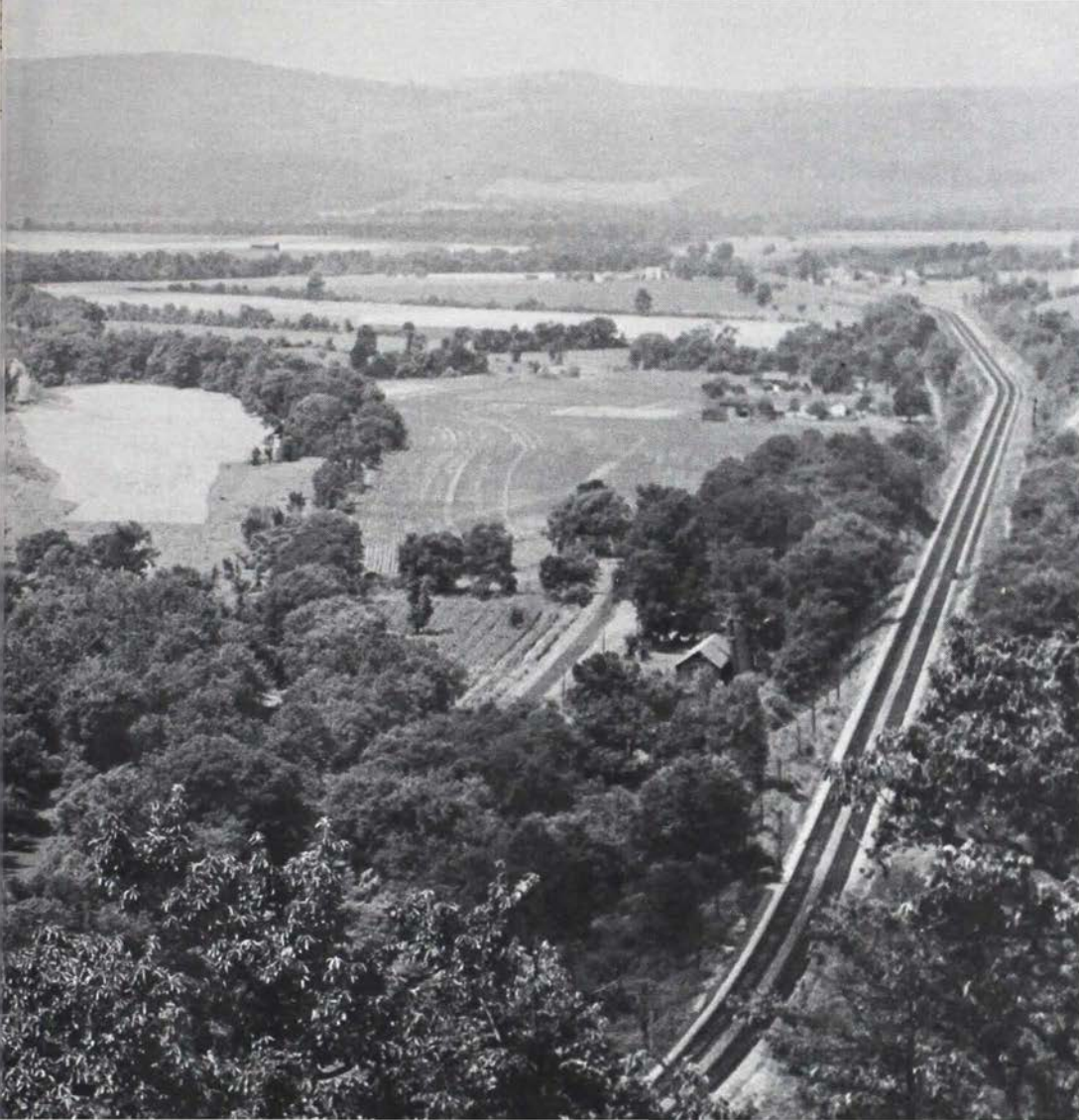
versity life. Cornell's tree lined campus overlooking Cayuga Lake has often been called one of America's most beautiful college locations.

The Chapter House at 312 Highland Road in the village of Cayuga Heights is located on three and a half acres of partially wooded land complete with its own stream. The house, formerly a private residence, has recently been enlarged but we feel that the homelike qualities have been maintained. The men at Beta wish to extend to all their brothers a most cordial invitation to visit us at any time and especially this summer.

A Portfolio of Convention-Linked Pleasure

The following pages are devoted to pictorial coverage of a few of the many interesting areas within easy driving distance of Cornell University, headquarters for the 55th Convention. Photographs have been secured from the New York State Chamber of Commerce and the Cornell University News Bureau. House photo courtesy of Beta. □





The Finger Lake Region provides an alluring backdrop for the convention. It is a land of verdant valleys, gentle hills, rugged gorges, cataracts and limpid lakes. The Chemung Valley, shown here from a hilltop near Elmira, is typical of the southerly approaches to the area.

*page five
may 1966*

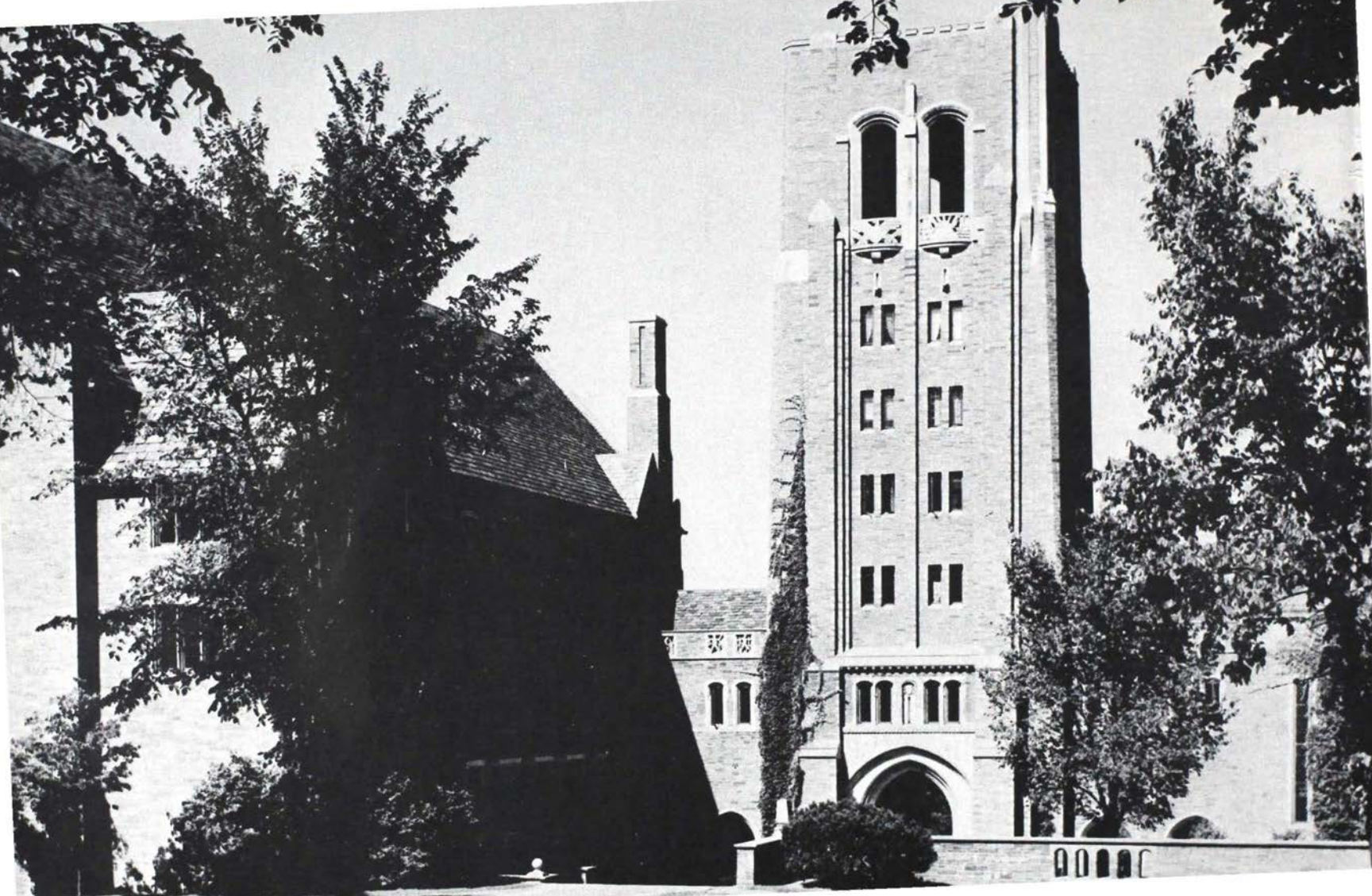


Treman State Park, at the left, one of a complex of state parks immediately surrounding Ithaca, features impressive rock cliffs towering over shaded pools.

For those who arrive from the west, or who prefer a day's outing, Letchworth State Park, fifty miles southwest of Rochester on the western fringe of the Finger Lakes, encompasses seventeen miles of the spectacular Genesee Gorge. This six hundred foot deep cut in the land's surface is one of New York's natural wonders. It contains three major waterfalls.

*page six
the quill and scroll*



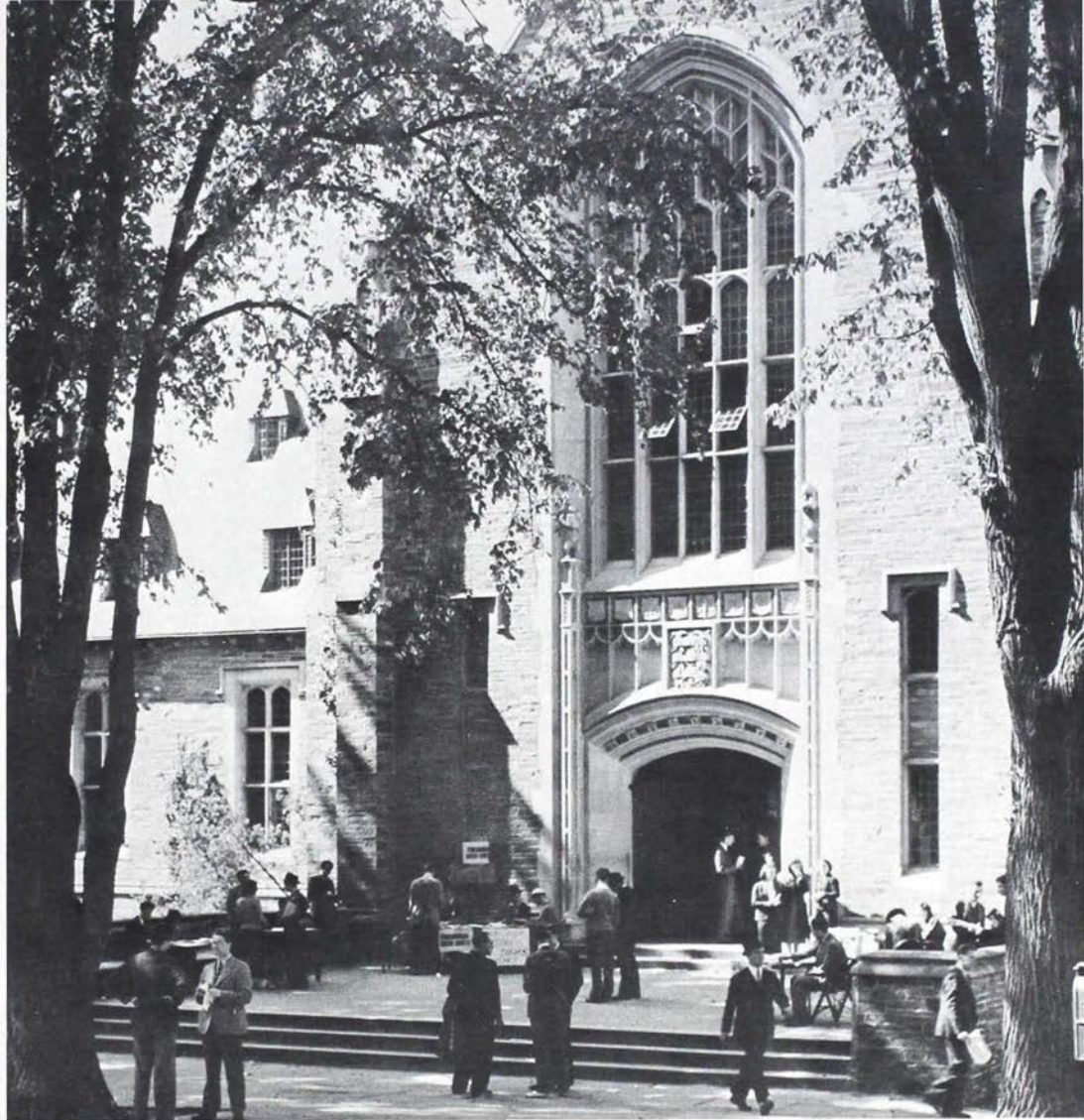




Myron Taylor Hall, at the left, Cornell's Law School Center, is one of the beautiful pseudo-Gothic buildings on campus.

Willard Straight Hall, the student union building shown to the right, carries out a similar architectural styling.

*page nine
may 1966*



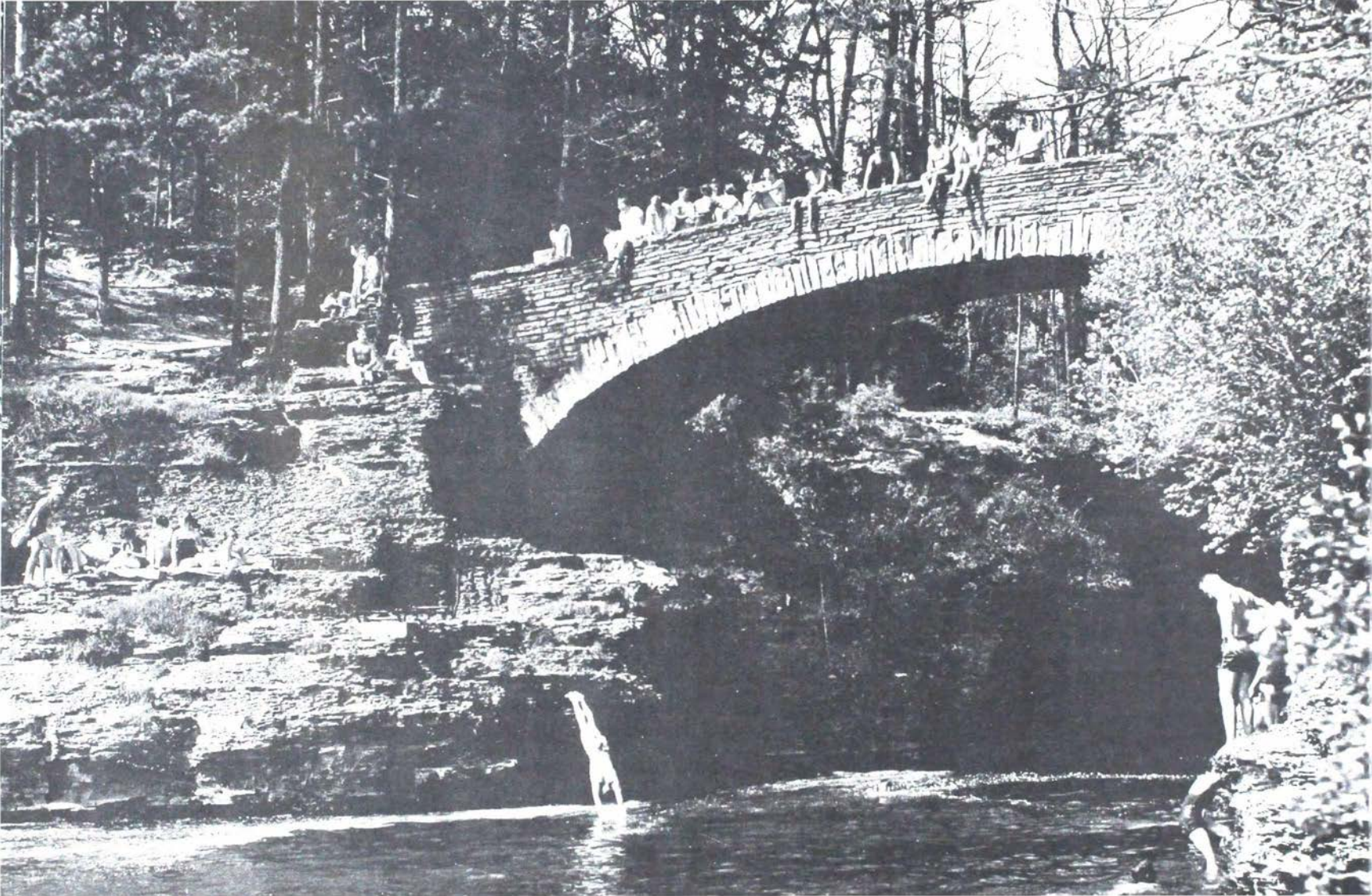


Watkins Glen, at the left, a world-famous scenic landmark, is less than thirty miles from Ithaca and an ideal location for a short side trip. This gorge drops over seven hundred feet within two miles.

The spring scene at the right typifies the beauty of the Cornell campus. The building in the foreground is Gordon Smith Hall, center of the College of Arts and Sciences at the University.

*page ten
the quill and scroll*







Beebe Lake, left, looks like this in spring, summer and fall. The lake provides water sport right on campus.

Sailing is one of the most popular sports in the Finger Lakes and there is ample opportunity to engage in it. There are at least six lakes over twelve miles long, with Seneca and Cayuga both extending over thirty miles in length.

*page thirteen
may 1966*



Newark, New York, a few miles north of the upper end of Lake Seneca, is known as America's Rose Garden. The world famous Jackson & Perkins rose growers call this

town home. Over 35,000 bushes grow and bloom in extravagant gardens which are open to the public from June to autumn. Admission is free.





Host Chapter Beta's Newly Enlarged Chapterhouse

EDITORIAL NOTES

In this Pre-Convention issue we should like to urge our alumni to take advantage of this unexcelled opportunity to see the representatives of our organization in action.

The Cornell campus is located in a setting of natural beauty, overlooking famous Lake Cayuga at Ithaca, New York. The surrounding area, as you have seen on the preceding pages, is rightfully spoken of as one of the nation's most scenic. The Finger Lakes with their surrounding gorges and waterfalls make an idyllic vacation site. Within easy travelling distances lie Niagara Falls, Canada, New York City, Philadelphia and New England. High speed Turnpikes and superior roads in New York and the surrounding states provide swift, easy transportation for visitors.

When you plan your summer vacation, make it a point to include the 55th National Convention on your itinerary. It is August 24th to 27th. The Convention keynote will be re-emphasis of the alumni function in the fraternity, so you can be certain of a warm and friendly welcome. □

*page sixteen
the quill and scroll*

MOTIONS TO BE VOTED UPON AT THE 55th CONVENTION

The Board of Directors has voted to introduce the following amendments to the National Constitution at the 55th National Convention.

Article III, Section 3, change to read: . . . ; and /or, *at their option*, those students who after the attainment of the Bachelor's degree, . . .

Article III, Section 8, change to read: No pledge shall be initiated into full membership in this Fraternity until, at a *secret* balloting upon his name . . .

Article IV, Section 5, change to read: A *condensation* of the application and the report of the investigation . . .

Article VI, Section 1, change to read: Alumni Corporations *shall* be formed . . .

Article XIII, Section 1, change to read: An alumni or honorary member may be expelled by a three-fourths vote of all active members of the Chapter of which he is a member, provided such action is *previously* approved by a unanimous vote of the members of the *National* Executive Committee . . .

Article XIII, Section 2, change to read: An honorary, alumni, or active member may be suspended for any cause deemed sufficient by unanimous vote of the *National* Executive Committee . . .

The Board of Directors has voted to introduce the following amendments to the National By-Laws at the 55th National Convention.

By-Law II, Section 1, change to read: . . . member belongs. *These taxes shall be due and payable upon receipt of invoice.*

By-Law IV, Section 9, delete and re-enter as By-Law VII, Section 1. This section, adopted previously, reads: There shall be established a K.D.R. Half-Century Club to which members in good standing of the various chapters and who have completed fifty years in the Fraternity shall be eligible for membership. Certificates of Membership shall be awarded from time to time by the National Board of Directors.

By-Law VII, Section 1, "Amendments," to become By-Law VIII, Section 1.

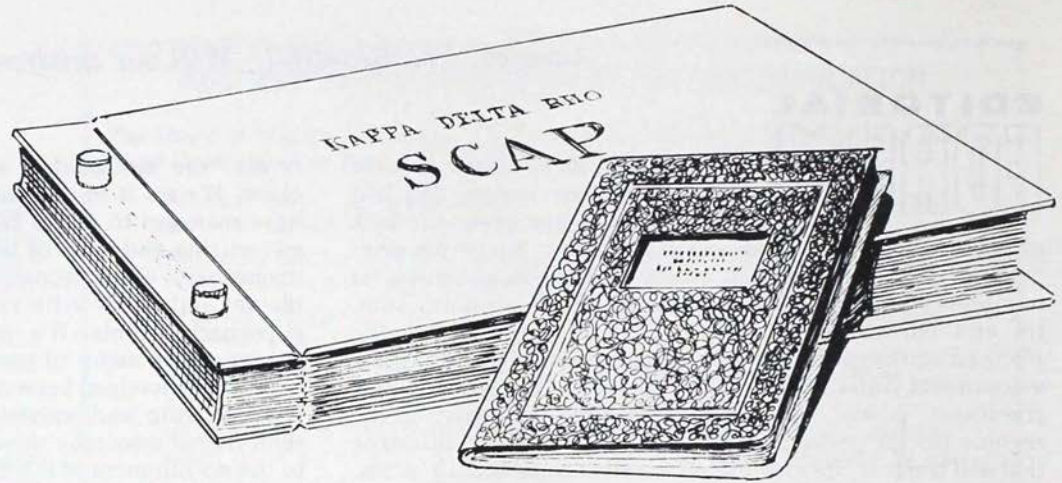
EDITORIAL FORUM

If there is one flaw which may be levied against our nation and our civilization, it is our execrable lack of good taste. *We see it in our architecture:* the garish neon "strips" that surround our major cities; the gaudiness of our honky-tonk chain stores; the emphasis on aluminum, tin and chrome as a cheap replacement for silver; the planned starkness of our stereotyped homes in housing developments (little boxes on the hillside). *We see it in our greediness:* power lines knifing through the most scenic regions (to go underground would cost more); billboards that sell trash at the expense of scenery; squalid slum areas, rat-infested and garbage laden because an absentee landlord won't spend a penny of his profits on improvements; the patent cheapness of many of our products—quality doesn't count, as long as they are pretentious; the 50¢ to \$2.00 "knickknacks" made in Japan, Hong Kong or Taiwan which cater to our so-called tastes; the sleek cars that crumple when you lean on them; plans by government to destroy our natural wonders . . . the Grand Canyon is even now in danger of being flooded out by dams! *We see it in our callous disregard for the rights of others:* the heaps of junk piled alongside our highways; litter in our streets; beer cans along our country lanes; numbers and names scrawled on washroom walls; statues daubed with paint; fraternity symbols painted on trestles, rocks and bridges; anarchy that bursts forth senselessly with its only aim, destruction; the rising rape rate; the desecration of our

rivers; the smog-laden air we breathe; wife switching clubs. *We see it in our mail:* pornographic filth that somehow manages to find a broad market; much of mail-order advertising and most of bulk mailings; the sameness of our magazines—either homely as an old victorian gargoye or blatant and gaudy with typefaces fighting typefaces; cheap paperback novels. *We see it in our entertainment:* the crudeness of many of our comedians; the thin, flavorless hamburger wedged between air-cushioned flour and doused with catchup and mustard to kill the taste of (too-often) semi-rancid meat; the slow disintegration of television plots to the nothingness of 6th grade appeal; the paper moon and tattered tinsel of our night clubs; greasy chicken-in-a-basket; not only the exploitation of singers who can't sing, and the worst types of rock and roll, but also the dissonant cacophony of avant-garde, 12-note scale "music;" prize winning pictures made by throwing paint on canvas or whisking donkey's tails in color.

This is an impressive indictment of our culture, but all is not black by any means. It has taken years of growth in a melting-pot society of diversified tastes to create good as well as bad. There are garden spots in this nation; there is good architecture, selflessness, quality, thoughtfulness, tasteful entertainment, good food and music. But by pointing out the bad, it is easier to recognize it and fight against it. As members of an educated, literate group we should be leaders in the fight to obliterate poor taste wherever it may be. □

New Chapter Financial Manual and SCAP



The National Directors are indeed proud to present to the Fraternity the *Chapter Financial Manual*, written by Floyd R. Baughman Eta '28, former Quaestor, National Treasurer, President, and currently Chairman of the Budget Committee. Brother Baughman has been accumulating ideas for a number of years, and presented his finished product to the Board at the Mid-Winter Meeting.

There are a number of chapter operations which can benefit from some

standardization. Chapter finances is one of them, and our chapters have long needed a manual as a guide to the duties of the Quaestor. While chapters may use different accounting systems, there are areas of responsibility which can be covered to the advantage of all.

After prefacing his manual with a few remarks and a list of past National Treasurers, Brother Baughman divides the manual into five sections: The Quaestor, The Budget, The

Monthly Financial Report, The Book-keeping System, The Simplified Chapter Accounting Plan.

Section One deals with the qualifications and duties of the Quaestor, including the important observation that finances play a vital role in chapter management. A poor Quaestor can ruin a chapter, and the Executive Committee is responsible for the satisfactory completion of the Quaestor's duties. Section Two describes a budget, offers suggestions for sources of

budget information, and discusses its preparation.

Section Three introduces an improvement on past procedure. The new financial statement will be compiled at the end of each month, and will be more complete. Chapter undergraduates and alumni will be able to see at a glance the actual and budget amounts for the month and also year-to-date. This will enable all concerned to spot immediately all variations from budget, and thus adjust elsewhere to compensate. Many Quaestors have conscientiously done this in the past; now a standard form is available to assist each chapter in performing this vital operation.

Sections Four and Five deal with the bookkeeping system, the Fourth suggesting a Chart of Accounts for chapter double-entry systems, and covering the various taxes affecting chapter finances. The Fifth Section gives detailed instructions for the Simplified Chapter Accounting Plan (SCAP) which is available to those chapters wishing a single-entry system

designed especially for fraternity bookkeeping. SCAP will no doubt prove to be the most satisfactory method for any chapter not committed to a double-entry system.

The *Chapter Financial Manual* and *Simplified Chapter Accounting Plan* will be formally presented to the chapters at the 55th National Convention at Beta in August. As the undergraduates know, the Directors have authorized paying the travel expenses of two delegates if they are the Consul and Quaestor. Brother Baugh-

man will hold a work session on Saturday morning of the Convention to instruct Quaestors in the various aspects of the new manual. It is important that all Quaestors make a supreme effort to attend this work session.

We cannot help but admire the many years of service which Brother Baughman has given his Fraternity, culminating in this financial manual and accounting plan. We hope that his example will prove enlightening to our many brethren who also have much to offer. □

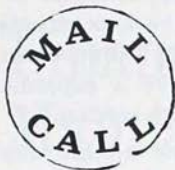
PROFESSIONAL DIRECTORY

We would urge members who are in need of professional services to check this listing before making commitments to another party. A fraternity brother is bound to be more helpful than a disinterested concern.

CONSULTING ENGINEER

Miles B. Potter Pi '31
Harris, Henry & Potter
Buckingham Professional Building
Buckingham, Pennsylvania
215-794-7401

This section is open to all fraternity members who are engaged in businesses which might profit from a listing in this publication. Annual rates are \$5.00 for four insertions. A three year listing (12 consecutive insertions) is \$12.00. Please include name, chapter and date of graduation, business affiliation, address and phone number. Larger ads with more information can be placed under display rates, if desired. Write the Editor for further information.



an obligation to serve

"Your February issue . . . arrived at our headquarters today. Frankly, we are so pleased (with) the support you have given the U.S. Army Officer Candidate Program that composing this paragraph has become difficult. We had no expectation you would provide such excellent support and coverage. Thank you.

"Kappa Delta Rho is to be commended for this excellent support of the Army Officer Candidate Program. My personal thanks for your keen interest."

James R. Mailler
Major, USA,
Advertising & Publicity Div.

The article was printed as a result of an agreement between CFEA editors and the Army to support the recruiting command.—Ed.

page twenty
the quill and scroll

jaffery c. harris

"Everyone who has seen the article in the February *Quill and Scroll* was very pleased and interested in it. Yesterday I sent a copy (of the magazine) to Jaffrey Harris's sister living in Trenton. She and a brother in Troy, N. Y. will be very interested I am sure."

Miss Olive R. Allen
Santa Barbara, Calif.

Miss Allen was primarily responsible for our securing this article, and has been our correspondent. She states that Brother Harris has received mail from at least one of his former classmates.—Ed.

ethics are for others

This article, appearing in the November issue has evoked the interest of two other fraternity magazines, from whose editors we have received requests for reprinting. Author Bob Varnum, Mu '27, reports he has heard from many sources, including a classmate he has not seen or heard from since 1925.—Ed.

Be an active member! Be sure
to answer the Readership Survey
on pages 28A and 28B.

Weldon Powell Professorship Established at the University of Illinois

In memory of Weldon Powell 'Eta '22, of New York City, who was killed in an automobile accident last fall, a professorship in accountancy has been established in the College of Commerce and Business Administration.

Mr. Powell was a partner in Haskins & Sells, Certified Public Accountants. His wife also died in the accident, which occurred Oct. 23 near Owego, N. Y.

More than \$41,000 to underwrite the professorship has been received by the University of Illinois Foundation, largely from fellow accountants, and the \$100,000 goal set by the originators of the memorial is expected to be realized.

The Haskins & Sells Foundation plans to contribute funds in an amount equal to or in excess of all contributions received from firms and individuals, and the Powell Professorship has been added to the list of special projects to be included in the University of Illinois Foundation's 1966 fund campaign.

In charge of the fund effort for Haskins & Sells Foundation, Inc., is another K.D.R. alumnus, John W. Queenan, 'Eta '27, managing partner of the firm and president of its foundation.

Brothers Powell and Queenan were linked in a feature article in our September, 1961 issue. □

ON CAMPUS



University of California SPECTACULAR SPRING

Lambda has had a remarkable spring semester. The Mother's Club held a fashion show luncheon at the chapter house on March 17th, netting \$295.00 towards the purchase of a new stove. The Alpha Chi Omega's did the modeling.

Alumni relations are now being handled by the Stewart-Howe Alumni Service. Response to the new and better Lambda Lyre has been excellent. Fourteen alumni attended formal initiation ceremonies March 6th—the best showing in years. A Founder's Day banquet is planned for May 13th. (As the magazine was being printed on this date, we could not report further on this event—Ed.)

In intramurals Lambda finished second in basketball in their division losing a heart-breaker by one point to the Theta Deltis in the playoffs. Brothers Roy Gesley and Jack

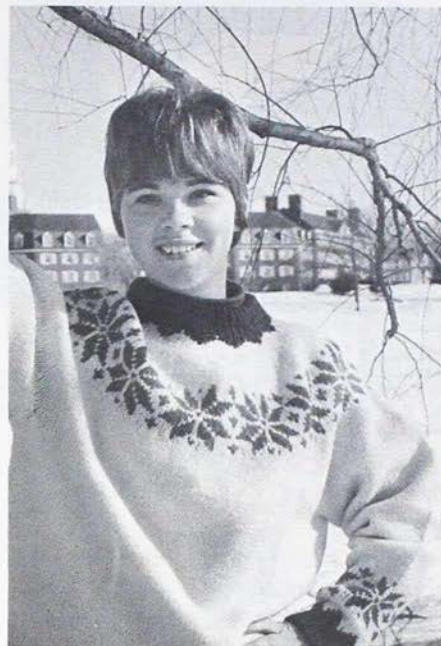
Campbell teamed up to take the All-Fraternity badminton championship. Softball is the big sport. After beating Phi Psi 31-10 (yes, in softball!) and the ZBT's 17-3, Lambda finished first in its division. Wrestling and weightlifting promise to be strongpoints. Last year Lambda finished 7th of 25 teams entered with only 3 men participating. All three are back this year, with four new prospects as well.

April 16th was the day of the 16th Annual Ski Dance and Kiddie's Snow Party. Twenty-five children from a nearby youth guidance center spent three hours at the chapter house going down the 100 foot toboggan run constructed in front of the house and eating cake and ice cream. The party was covered by the San Francisco Chronicle-Examiner and the Oakland Tribune. The evening featured a barbeque dinner (with dates) followed by one of the most famous parties on campus.

The chapter is doing well in rush thanks to the efforts of Jim Wessel, Rush Chairman and the interest of the remainder of the brothers. Seven pledges have been secured for next quarter which brings total house membership in the fall to 30, one below budget. There should be time to go over our goal.

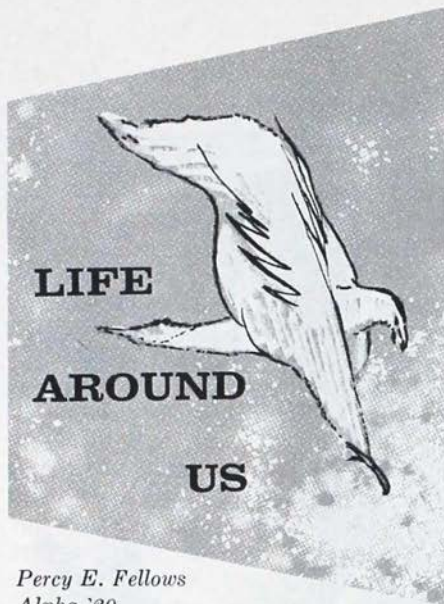
The regional conclave with Sigma was held April 2-3. The Quarter System was the main topic of discussion since California is going on this system in October.

As noted in Bulletin Board, Lambda also won the Scholarship Cup this spring, which provides additional accolades to a truly spectacular semester.—Ed.



Colby College CARNIVAL QUEEN

Miss Debby Anglim, (above), a senior from Lanham, Maryland and Xi chapter's candidate for the Colby College Winter Carnival Queen. She walked away with the crown, surviving stiff competition. □



Percy E. Fellows
Alpha '20

The climate of our planet supports more than man himself—and each representation of life, be it fowl, fish, animal or vegetarian, is worthy of man's curiosity . . . for these are "neighbors" sharing one mysterious function that no human knows how to synthesize. Life is abundant and profuse, in a million different forms. It is around you and about you and inside you. It is at the same time, the commonest yet least known of all the mysteries.

*page twenty-two
the quill and scroll*

Some years ago a friend of mine took the Yellowstone National Park tour and among his experiences, he watched the rather famous park bears feeding out of garbage pits. A letter sent to his daughter mentioned this. The daughter read the letter to her five-year-old child, who promptly came up with the question, "Why didn't the bears eat Grandpa?" The mother's answer was, "I guess they preferred the garbage!"

Without drawing any conclusions from the remark, it is a matter of fact that bears like to rummage in garbage dumps. There is such a dump in northeastern Vermont near the Canadian border which is frequented by bears. Each night visitors come to watch them amble out of the woods into the dumping area.

One late afternoon when it looked like rain, I took some young children to the dump, hoping to see some bears. We were well rewarded. After a short wait, a big male came down a path in the woods. He stopped at the edge of the clearing, scented the air and then moved slowly down a steep bank to the dump. He wasn't there very long before he scented the air again and went back to the woods. A moment or two later he was back, sorting out the edibles. A short time later a half-grown cub walked down the path and ran right over to the larger bear. He was roughly greeted with a cuffing that sent him galloping off into the woods. The large male went back to his odoriferous job, finding a large bone (apparently from a butcher shop) that intrigued him. He dragged it up the bank and dropped it at the edge of the woods for further attention at a later date. Then he returned to his gorging. Once he was intent on routing out more food, the cub appeared

at the edge of the woods . . . and carefully sneaked up on the big bone. He grabbed it and made a hasty retreat down the path from which he had come. The older bear never noticed the theft.

One of the children, an 11 year old "nature boy," crowed, "This is the best day of my life!" (We had also seen two deer at play on our way to the dump).

In the evening at the dump you can hear all kinds of bear stories exchanged by local inhabitants. One that caught my ear was told by a farmer who had been cutting wood with his son on an early spring morning. Their dog kept barking continuously, until finally the farmer told the son to go kill the porcupine the dog had treed. The son soon found out that there wasn't any porcupine around. Instead, he found a round hole in the snow with a bear's nose sticking out of it! Apparently a mother bear was still in her den along with the cub to which she had given birth over the winter. Young bears are very small at birth and are born in groups of from one to three. They are usually able to follow the mother when she emerges in spring, but this family wasn't ready to move yet. □





Lt. William MacInnes



Lt. David Meserole



Lt. Marvin Knoll



1st Lt. Bruce D. Garman

Pi '64, an orbital analyst and member of the Air Defense Command which provides aerospace defense against hostile aircraft and missiles, recently received his promotion from 2nd Lieutenant.

1st Lt. John E. Ebersole

Pi '63 participated in the SAC "World Series" bombing and navigation competition. He is maintenance officer for a B-52 Stratofortress which took part in the tests held Sept. 12-18th, 1965, representing Griffis AFB, N. Y.

Major William D. Lockwood

Pi '52 received the 1st Oakleaf cluster to the Air Medal at Yokota AFB, Japan, for service in Viet Nam.

Captain Jay W. Smith

Xi '56 has been awarded the Air Force Medal for flying a proscribed number of missions in Viet Nam.

Graduated from Courses

Captain Jon C. Emigholz, *Kappa '56* (pilot instructor course); 2nd Lt. Robert C. Hall, *Alpha '65* (ordnance officer basic); 1st Lt. William H. MacInnes, *Beta '64* (navigator school); 2nd Lt. William V. Parkell, *Pi '64* (pilot training); 2nd Lt. Robert W. Stanley, *Sigma '64* (pilot training).

Newly Commissioned Officers

David A. Meserole, *Psi '65*.

Entering Courses

2nd Lt. Marvin E. Knoll, *Nu '65* (pilot training).



Lt. Robert Stanley



Lt. William Parkell

Northern N. J. Alumni Association's plans for the "Coffee Break for Safe Driving" are now in their final stages. The police approved project will be held Monday night, May 30th on Route 17, Ridgewood, N. J. □

If you have changed your address recently or intend to within the next 60 days, clip off this form and mail to:

Kappa Delta Rho Fraternity
Oprandy Bldg. 481 No. Dean St.
Englewood, N. J. 07631

MY NEW ADDRESS IS:

Name.....

Address.....

City..... State.....

Chapter.....

Year Graduated.....

MY OLD ADDRESS WAS:

Street.....

City..... State.....

Kappa Delta Rho National Foundation
c/o President Floyd R. Baughman
553 Haworth Ave., Haworth, N. J.

Dear Brother Baughman:

- ☐ I should like to contribute to the irrevocable Trust Fund, now established, which is designed to operate exclusively for charitable, educational, scientific and literary purposes in connection with the national fraternity. I understand that all contributions are tax exempt.
- ☐ My Will is being changed to grant the following sum to the principal of the Trust Fund.

Name.....

Street.....

City..... State.....

Chapter..... Year of Graduation.....

Amount of Contribution.....

Should a Student Join a Fraternity?

ask two recent N.I.C. booklets

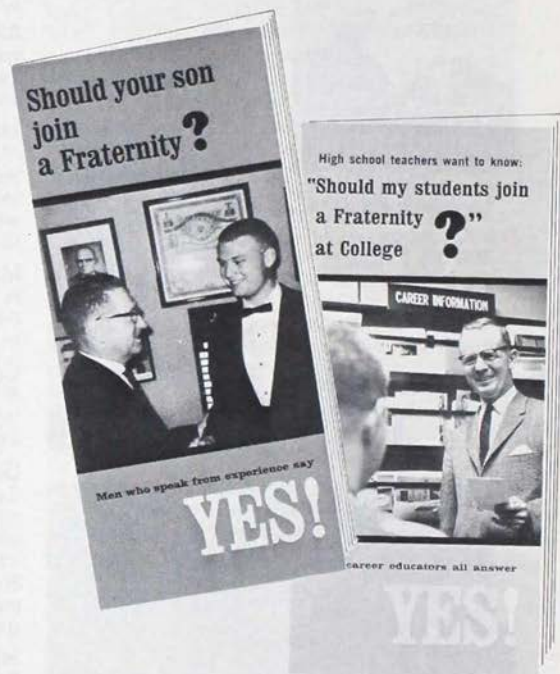
Two booklets recently issued by the National Interfraternity Conference have this question as their subject. One booklet is directed to high school teachers and counselors; the other to parents.

The teacher oriented booklet looks frankly at both sides of the fraternity question. Eleven career educators including Deans and Assistant Deans of colleges and universities, Superintendents of Public Schools and the Chancellor of a University take note of the currently prejudicial opinions about fraternities and state proven facts in rebuttal.

The booklet directed at parents is the result of a survey of hundreds of fraternity alumni, ranging from recent graduates to men in their 50's and 60's. It was felt that these men can speak from experience. The overwhelming majority (90%) said that if they had a son they would advise him to join. Another 6% said, "I'd leave it up to him." Among the reasons given were: encouragement of superior scholarship, enhanced chance of graduation, leadership potential, training in good citizenship, etc.

Both booklets are available from the National Interfraternity Conference, Room 1207, 271 Madison Avenue, N. Y., N. Y. 10016. Price is 15¢ each (up to 24 copies). Larger quantities may be obtained at somewhat reduced prices. Write the above address for further information. □

*page twenty-four
the quill and scroll*



The Annual Loyalty Fund 1965-66

Three months preceding the close of this year's Loyalty Fund drive, 509 KDR's had given a total of \$3,795.63 or 47 % of the \$8,000 goal.

Beta continued to dominate the Fund both in dollars raised, \$530, and in donors, 66. Eta with \$331 retained its hold on second place. Theta held third with an even \$300 in contributions. Zeta's \$266 was good enough to keep the fourth position, but Rho, with \$262, passed Lambda for fifth place and seriously threatened Zeta.

Theta, with 38 donors, passed Zeta by one contributor and took over second place in total donors. Lambda's

36 contributors were a very close fourth. Eta with 35 donors held fifth place.

Contributions to the Loyalty Fund play an important role in financing the activities of the National Fraternity. Increased service to local chapters and expansion of the fraternity rely heavily upon support furnished by voluntary contributions.

The 1965-66 Loyalty Fund ends June 30. Following is a list of those who had made contributions as of March 28. If you have not as yet sent in your gift, please make use of the coupon on this page quickly. ☐



LOYALTY FUND

Mr. Robert Corrie, Treasurer
Kappa Delta Rho Fraternity
P.O. Box 157, Jericho, N. Y.

\$8,000
for 1966

Dear Brother Corrie:

In recognition of the need for a stronger national organization, and a more active program, enclosed is my contribution for the 1965-66 Loyalty Fund.

Name.....

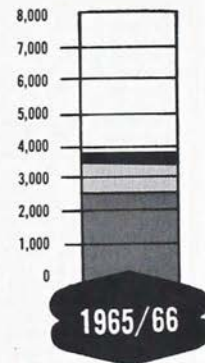
Street.....

City..... State.....

Chapter..... Year of Graduation.....

Amount of Contribution.....

☐ Check ☐ Money Order ☐ Cash



March 30th Total
January 18th Total
October 14th Total

LOYALTY FUND CONTRIBUTORS JULY 1, 1965 TO MARCH 30, 1966

ALPHA

Ayres, G. R., 16
Bicknell, H. B., 59
Brook, J. S., 35
Brown, R. H., 36
Cardell, J., 18
Davis, S. P., 21
Eaton, D. W., 62
Embler, E. G., 34
Fellows, P. E., 20
Guarnaccia, P. B., 38
Hagar, I. D., 09
Hartnett, W. E., 56
Haugh, C. J., 21
Hendry, G. C., 15
Kearney, Jr. V., 49
Lank, A. G., 55
Moriarty, J. A., 47
Murdock, C. W., 10
Puksta, C., 49
Roser, S., 65
Russell, T. E., 42
Shaw, G. E., 10
Silloway, Jr. B., 63
Walch, C. M., 07
Walch, R. E., 45
Walch, R. H., 13
Walch, W. F., 12
Youngman, R., 63

BETA

Ackerly, E., 20
Adams, G. O., 23
Adams, H. L., 19
Allen, R. P., 56
Ayres, G., 64
Berry, K. E., 61
Blair, H. E., 18
Blomgren, G., 62
Coltman, W. P., 19
Comfort, C. A., 15
Corbett, L. W., 24
Corbett, R. B., 22
Corrie, R. D., 53
Cruckshank, A. A., 34
Davison, L. W., 16
Dimon, C. E., 13
Doerge, H. F., 57

Doughty, R. L., 64
Duffies, E. L., 19
Duffies, S. B., 20
Dunbar, R. C., 58
Ensor, J. S., 24
Flumerfelt, W., 23
Freund, E., 64
Gallinger, K. D., 29
Gilchrist, J. A., 17
Goodrich, P. R., 63
Heuser, R., 64
Higley, E. I., 32
Higley, R., 30
Hill, C., 61
Johnson, R. A., 25
Johnston, H. R., 17
Jones, C. C., 53
Keeley, Jr. E. W., 59
Knight, G. H., 31
Larson, G. T., 26
Lawrence, G. A., 36
Marquette, B., 15
Martin, C. B., 33
McCarthy, M. A., 56
Morris, Jr. J. C., 55
Neureuter, R. H., 45
Oest, J. A., 31
Padgett, J., 58
Paul, B., 14
Piester, E. A., 15
Porter, J. P., 17
Ramsay, J. A., 21
Rea, F. W., 31
Riddiford, A. W., 61
Roberts, Jr. W. T., 63
Sachleben, J. H., 56
Saunders, B. W., 61
Saunders, E. L., 41
Shackleton, H. E., 19
Smith, E. L., 22
Stillman, W. R., 56
Tarbuton, D. W., 58
Thomas, R. L., 27
Thornell, C. W., 14
Van Sickle, R. C., 23
Voorhis, G. M., 33
Whalen, J. J., 58
Whitney, W. S., 31
Young, W. W., 16

GAMMA

Allard, W. P., 35
Beaver, R. A., 24
Bliss, F. R., 21
Dickinson, R., 48
Donahue, F. H., 21
Griffin, F. E., 28
Hornung, H. K., 26
Ingraham, B. F., 35
Leneker, H. W., 43
Moore, Jr. H. G., 42
Schultze, L. W., 42
Walker, J. A., 18

DELTA

Chapman, S. B., 42
Cheatham, J. W., 54
Croft, D. L., 60
Carpenter, R. W., 55
Ellison, S. L., 53
Freestone, J. B., 23
Fuller, C. G., 20
Goldfarb, W., 59
Goodreds, J. S., 56
Hannah, G. L., 32
Hoben, J. B., 30
Ingrey, P. B., 61
Johnson, E. P., 44
Judd, O. G., 26
Kelsey, R. B., 31
Naeye, P. J., 25
Quigley, P. J., 54
Rice, A. W., 62
Robarge, J. A., 60
Ruby, D. T., 37
Shaw, D. M., 49
Sinn, J. F., 43
Slade, G. J., 41
Stanley, G. R., 59
Staub, E. F., 27
Tietenburg, H. H., 30
Watson, E. G., 33
Williams, Jr. H. D., 61
Woodward, W. N., 36
Wright, W. N., 27

EPSILON

Botts, S. C., 30
Clem, G. M., 33

Hannapel, H. R., 35
Harding, H. K., 23
List, H. E., 22
Rudd, K. J., 25
Thurston, J. F., 58
Volland, R., 4
Wolford, L. T., 12

ZETA

Bayer, A. E., 61
Bloser, D. W., 33
Bowen, D. P., 59
Bryson, W., 64
Burwell, Jr. A. C., 42
Butterbaugh, J. H., 55
Calhoun, R. J., 50
Crothers, G., 55
Cruso, Jr. T., 61
Dzvonik, M. D., 63
Erb, H. G., 20
Faller, H. C., 60
Hamrick, D. R., 57
Harkins, S., 28
Hering, P., 60
Jones, D. A., 31
Keffe, C. F., 67
Keffe, W., 65
Kern, W. A., 52
Kijanka, T. H., 64
Kitchen, E. T., 33
Kramer, K. C., 54
Matz, W. H., 44
McCollough, R. P., 31
McCombs, R. R., 28
Morris, D. F., 37
Naylor, G. N., 51
Pyle, T. A., 54
Riland, L. H., 51
Risteen, R. N., 47
Ruhl, C. P., 50
Schinagl, R. J., 65
Stern, J. H., 28
Stine, L. G., 47
Summers, D. N., 61
Vernon, W., 48
Welsh, J. R., 62

ETA

Baughman, F. R., 28
Bayler, T., 50
Brown, H. F., 31
Courtright, T. R., 68
Cromer, G. W., 21
Garvey, B. S., 21
Granert, Jr. H. A., 42

Hazzard, K. M., 54
Hereche, A. G., 23
Herrmann, C. C., 20
Herzstock, W. P., 51
Kouba, N. G., 54
Krasburg, B., 30
Larsen, K. A., 30
Larson, D. E., 34
Lewis, P. H., 30
Lunak, K. V., 23
McMitchell, R., 38
Osborn, H. M., 22
Partlow, C. W., 33
Piel, H. C., 31
Powell, W., 22
Reid, L. L., 28
Robinson, E. B., 27
Rosborough, J. R., 33
Rowe, W. L., 29
Schutt, R. D., 34
Strong, R. V. D., 31
Templeton, H. L., 56
Timpany, R. D., 40
Van Gorkum, J. W., 39
Vranek, L. R., 49
Whitfield, J. R., 49
Whitlock, A., 33
Woods, Jr. S. W., 58

THETA

Anslinger, U. H., 48
Benson, W., 51
Brant, W. W., 55
Cade, R. H., 28
Carl, J. C., 51
Clemens, G., 52
Cook, F., 63
Davis, J., 61
Deville, V. T., 62
Doddridge, J., 61
Falconer, F. L., 55
French, W. A., 51
Fritzke, G. D., 53
Geshkewich, J. M., 61
Glendinning, R. H., 23
Grossman, M. W., 62
Harvey, W. A., 23
Hampel, J. K., 59
Heaton, C. H., 62
Heltzel, S. W., 60
Huxtable, R., 56
Joyce, J. M., 63
Keller, R. D., 65
Kindscoog, R. J., 59
Mayes, R. J., 60

Newcomb, R. W., 55
Peck, G. S., 40
Ratti, E. P., 42
Rippe, W. J., 65
Sloan, C. D., 37
Smithberger, A. W., 54
Spears, E. C., 64
Steele, A. D., 42
Stern, B. B., 54
Storms, J. R., 41
Vogel, L. H., 27
Walker, R. W., 49
Williams, E. R., 57

IOTA

Bauman, R. D., 57
Bergen, J. L., 35
Blades, G. F., 54
Craig, G. M., 38
Crouse, W. S., 15
Evans, W. C., 25
Fahring, G. F., 33
Haelig, F. W., 60
Herb, G. O., 21
Hogan, J. R., 62
Hopler, E. S., 24
Idleman, L. H., 54
Kemery, F. B., 28
King, A. P., 21
Mallay, P. C., 23
Martinelli, M. J., 39
Merrill, W. E., 31
Payne, R. L., 30
Priemer, B., 28
Sanders, C. S., 13
Sanders, C. L., 13

KAPPA

Albright, E. S., 23
Bissell, E. O., 40
Chalfant, H. B., 23
Chodd, E. S., 25
Gill, J. W., 29
Harrington, J. F., 39
Hauseman, Jr., H., 26
Hinman, R., 23
Hoeltzel, K. E., 59
Kinn, H. J., 29
Ladd, D. C., 33
Locke, H. S., 52
McMichael, Jr., E. D., 49
Miller, H. C., 33
Mroczka, T. A., 62
Pellow, R. A., 34

Povenmire, H. R., 63
 Sherwood, R. M., 34
 Smith, R. D., 59
 Thomas, M. F., 48
 Weaver, M. C., 36
 Wetzell, H. E., 23

LAMBDA

Anderson, R. H., 62
 Brainerd, C., 24
 Bruce, R. W., 26
 Carmichael, N. J., 49
 Casaretti, J. R., 56
 Davis, R. G., 65
 Dunsmore, F. H., 25
 Eveland, G. H., 38
 Fink, L. R., 33
 Garing, M. W., 37
 Geering, R. J., 54
 Glines, J. H., 31
 Griem, Jr., P. D., 61
 Herberger, A. L., 25
 Iverson, H. H., 24
 Johnson, G., 26
 Johnson, G. B., 26
 Jones, S. P., 26
 Keyes, C. E., 50
 Knopp, H. P., 34
 Larsen, A., 28
 Lewis, V. D., 33
 Lindauer, A. G., Hon.
 MacMahon, G. B., 23
 McKisson, R. L., 44
 Mixter, W. H., 24
 Moncure, T. A., 26
 Myer, Jr., R. T., 63
 Nash, R. E., 57
 Peterson, S. S., 48
 Pick, P. F., 39
 Ryan, N. T., 65
 Schinnerer, J. F., 52
 Shipley, W. H., 24
 Tronoff, Jr., T. V., 48
 Whitaker, A., 51

MU

Boynton, R. L., 37
 DeWitt, Jr., F. J., 26
 Ford, Jr., H., 28
 Franseth, P., 29
 Glass, S. W., 32
 Gouldthorpe, H. W., 27
 Pryor, M. H., 1925
 Varnum, R. O., 27
 Zartman, W. E., 27

NU

Arch, D. E., 58
 Atkinson, A. R., 33
 Babb, Jr., J. I., 62
 Beckley, K. A., 62
 Boyd, J. H., 55
 Brockman, E. F., 37
 Burnham, W. E., 27
 Burns, V. V., 32
 Butz, W. P., 63
 Clark, A. B., 29
 Cottrell, R. F., 51
 Egan, J. B., 59
 Farrell, L. L., 34
 Gerberding, M. C., 54
 Gumper, E. R., 51
 Hippensteel, D. J., 61
 Kendrick, D. W., 1926
 Lain, R. P., 58
 Leimer, W. H., 60
 Logan, B. A., 34
 Malkemus, S. L., 55
 Miller, B. W., 31
 Miller, F. W., 29
 Musselman, R. J., 61
 Oliphant, F. W., 32
 Owens, C. D., 28
 Reinking, R. L., 59
 Risteen, R., 49
 Salamon, S. C., 55
 Smedley, M. C., 68

OMICRON

Boaz, H. M., 33
 Campbell, E. R., 31
 Frazier, C. B., 32
 Hughes, J., 30
 Mathers, R., 31
 McKay, C. D., 32

PI

Anderson, C. F., 33
 Armitage, A. E., 14
 Boyer, R. H., 60
 Ellsworth, E. D., 52
 Greve, R., 67
 Kipp, W., 33
 Majkowski, V., 65
 Moul, E. C., 49
 Nagle, R. S., Rev., 35
 Pensyl, J. P., Hon.
 Pursch, W. C., 60
 Seibel, F. R., 25
 Senft, R. L., 42
 Sloat, C. A., 33

Leading Chapters CONTRIBUTORS

Beta	\$529.93
Eta	331.00
Theta	300.00
Zeta	266.00
Rho	261.50
Lambda	229.00
Delta	201.00
Xi	193.00
Alpha	189.00
Sigma	186.00

Stein, P. E., 30
 Weikert, N. J., 30

XI

Barr, A. L., 63
 Benson, E. R., 29
 Buyniski, E. F., 35
 Fernandez, L. E., 55
 Gesner, K. R., 53
 Gurney, L., 43
 Hill, E. R., 61
 Korst, T., 65
 LeMoine, H. F., 32

Maclean, A. D., 57
 Mayo, T. D., 57
 Mott, S. L., 51
 Ronayne, M. F., 51
 Stineford, Jr., W. H., 30
 Swanson, R. A., 55
 Thompson, G. P., 35
 Tripp, R., 65
 Vigue, K. J., 49
 Whittier, J. M., 60

RHO

Beck, C. F., 44

Leading Chapters CONTRIBUTORS

Beta	66
Theta	38
Zeta	37
Lambda	36
Eta	35
Rho	33
Delta	30
Nu	30
Sigma	29
Alpha	28

Biehn, C. G., 34
 Broadfoot, R. G., 52
 Bruch, D. W., 29
 Bruhn, A., 57
 Bruinooge, C. J., 51
 Clay, M. G., 30
 Closs, F. T., 51
 Corwin, R. W., 25
 Crosen, R. G., Hon.
 Dyer, K. L., 28
 Fooder, E. G., 32
 Fox, R. J., 61
 Fyfe, L., 56
 Geiger, W. A., 32
 Gottshall, R. K., 27
 Greenawalt, P. L., 34
 Hamlyn, R. C., 50
 Johnson, L. F., 64
 Koch, D. O., 60
 Lahy, D. O., 33
 Leighton, R. S., 52
 McLean, W. G., 32
 Newton, D. H., 25
 Payne, W. T., 25
 Piro, P., 1964
 Prentice, D. B., Hon.
 Puckette, IV, C. M., 59
 Ryan, W., 65
 Snyder, C. E., 29
 Wildman, B. S., 31
 Wiley, D. G., 37
 Winship, E. C., 55

SIGMA

Bell, J. F., 49
 Brown, B. H., 39
 Campbell, C. C., 23
 Carter, A. B., 26
 Cooper, M. L., 61
 Crouse, H. M., 24
 Crow, D. M., 66
 Drury, G. D., 42
 Faust, M., 52
 Gilmour, G. W., 55
 Goodale, R. W., 29
 Kenyon, Jr., E. C., 24
 Leaf, C. S., 43
 McClure, J. R., 49
 McGinnis, K. L., 65
 Meyer, G. R., 63
 Moller, W. C., 52
 Morgan, Jr., T. O., 51
 Morris, K. W., 33
 Neubauer, D. W., 53
 Olesen, K. H., 29

Onsdorff, T., 24
 Paul, W. H., 24
 Schoen, E. J., 26
 Smartt, M. T., 28
 Stewart, L. L., 32
 Stokesbury, W. A., 32
 Urban, F. K., 33
 West, R. H., 64

TAU

Ditzler, P., 36
 Lewin, W. S., 31
 Lewis, D. W., 28
 Moore, W. J., 35
 Reilly, E. L., 23
 Williams, A. L., 38

UPSILON

Estep, J. R., 50
 Grosse, M. A., Hon.

PHI

Dake, Jr., T., 52

PSI

Ernst, R. E., 61
 Harder, G. W., 67
 Kauffman, L. H., 62
 Kehrig, W. H., 62
 Ludlum, R. B., 53
 McNally, B. A., 60
 McWilliams, Jr., D. E., 52
 Meyers, R. F., 67
 Patterson, G. B., 65
 Wright, Jr., F., 62

OMEGA

Jones, D. F., 66
 Kunc, E., 66

ALPHA ALPHA

Gilmore, T. M., 64
 Murphy, Jr., J. P., 59
 Neill, A. R., 60

BETA ALPHA

Delgado, T. A., 60
 Harlow, J. M., 62
 Harrison, R. W., 61
 Reckdenwald, E. W., 61
 Seal, Jr., C. V., 64
 Zureck, J. J., 63
 Zwicker, C. H., Hon.

THE SOUNDING BOARD

The Executive Secretary speaks out
in his own permanent column.



—A. Lawrence Barr

As most of us are aware, the press tends to be anti-fraternity. Problems are blown up way out of proportion, and accomplishments are usually discarded as dull copy.

Fortunately, this is not always the case. A paper in Philadelphia and one in New Orleans are two which come to mind as having given a positive side to the system of which we are all a part.

While in New Orleans for a meeting, Robert W. Krovitz, President of the National Interfraternity Conference, (KDR is one of the sixty-one nationals in the N.I.C.), addressed the group and pointed out what a "lively corpse" the fraternity movement is.

As examples of the health of the system, Mr. Krovitz mentioned that fraternities are incapable of supplying the huge demand by Deans for new chapters on campuses. This demand is caused by the higher average scholarship of fraternity men, as well as the greater percentage who graduate, plus leadership training, and the chance to identify with a small group having high ideals. In 1945 total undergraduate fraternity membership numbered 1,100,000. Twenty years later the total was 2,240,000. In the past three years 253 new chapters have been started on U.S. campuses.

In contrast to this growth, we have watched the demise of fraternities at Williams, and the tendency of other northeastern campuses to edge in that direction. In a recent visit to Middlebury, where we were founded in 1905, I had the opportunity to catch up on the proposals of an Ad Hoc Committee studying the future growth and social system on the campus. While there

are three alternatives (including several ways of expanding the fraternity system), the ill wind apparently favors a system of co-educational dormitories, plus coed societies similar to fraternities for dining and socializing. Freshmen would be assigned to these societies of 100 members prior to registration, and would be able to get out only if someone in another society were willing to switch. While this would solve some of the college's problems, it is difficult to see how these coed societies would supply the finer characteristics inherent in the Fraternity system.

One of the key elements to success in the undergraduate chapter is alumni interest, influence, and support. The greatest source of chapter guidance which Fraternities offer college administrators is the chapter alumni body. The maintenance of all standards must be built into the duties of the chapter alumni corporation. If the alumni officers are in tune with the college, the fraternity will keep abreast of the trend and will never be accused of hindering the progress of the host institution.

Recognizing the importance of alumni activity for the future of KDR, we set goals in this area at the 53rd Convention, with an eye toward the 55th Convention, the theme being "Alumni—Backbone of a Strong KDR." The initial goals—additional alumni associations—have been met. It is up to you, the KDR alumnus, to support this progress in whatever way possible: chapter corporation, local association, expansion, rushing recommendations, Loyalty Funds, etc. Can we count on you?

We hope to see you at Beta for the 55th. □

A READERSHIP STUDY

— for members of Kappa Delta Rho

Please fill out the answers to the following questions and mail this page to Charles F. Beck, Editor, *Quill & Scroll*, R.D. 1, Box 529, Macungie, Penna. The greater response to this questionnaire, the greater the benefit to all our readers.

CONTENT

1. Many different columns have run in the magazine over the past five years. Most of the following are still current—some can be found in every issue; some infrequently. Which have you enjoyed the most? Please check.

- ☐ *Within Quotes*—Quotations selected from various authors pertinent to the day and age, or fraternal life.
- ☐ *10-25-50 Years Ago*—Happenings in our fraternal past at the yearly intervals selected.
- ☐ *On Campus*—Happenings on campus among our chapters, reported by the chapters.
- ☐ *Crossword Puzzle*—We tried this once.
- ☐ *Mail Bag*—Letters to the Editor.
- ☐ *Hobby Headquarters*—Avocations of our readers.
- ☐ *The Outfield*—An attempt to cover the excesses of both the far right and far left.
- ☐ *Meet Your Alumni*—Noted K.D.R.'s present and past.
- ☐ *Pages from History*—Anecdotes or items of historical interest to the fraternity.
- ☐ *Overseas Directory*—Annual Listing of overseas alumni with addresses.
- ☐ *Life Around Us*—Animal, vegetable and other forms of life in our midst.
- ☐ *The Sounding Board*—The Executive Secretary's column.
- ☐ *Editorial Forum*—The Editor's column.
- ☐ *Service Centre*—Our men in service.
- ☐ *Short Stories*—Wide range of subjects, writings by KDR's.
- ☐ *Bulletin Board*—Short items of topical interest.
- ☐ *Chapter Eternal*—Obituaries.
- ☐ *Alumni Associations*—Social and business doings of established associations.
- ☐ *Our Family Tree*—Dormant chapters—can they be re-established?

- ☐ *Loyalty Fund Reports*—Progress of the annual drives.
- ☐ *Operation Challenge Articles*—Major articles supplied by the N.I.C. (at a fee) to member fraternities.
- ☐ *Poetry*—Written by KDR's; usually used as filler.
- ☐ Selections from other fraternity magazines.
- ☐ *Tales of the Unknown*—True stories of the unusual (See "The Courier" in the Feb. '66 issue).

2. Within the past several years we have expanded coverage to include articles not usually found in alumni publications. Among them are the following:

- ☐ *Life Around Us* ☐ *Hobby Headquarters* ☐ *Short Stories*
Would you like to see more of this type of article? _____

(Yes or No)

Do you feel that these articles have helped readership? _____

(Yes or No)

Have you any suggestions how we may further broaden readership?

3. Several columns are still in the process of experimentation or have died after brief exposure. Which of these would you like to see revived or continued:

- ☐ *Trading Post*—Small ads by members for, basically, hobby materials they wish to buy or sell.
- ☐ *Professional Directory*—Listings placed by members of professions who are KDR's.
- ☐ *Photo Contest*—We tried this several years ago with disappointing results. So few photographs were acceptable that the contest was aborted.
- ☐ *Open Door*—Questions by members concerning the function of the fraternity, answered in print by the officer of the National most responsible for the query.

4. We firmly believe that *every* KDR, no matter how important or unimportant, has had some experience which he could share with fellow members. This might concern his business life, home life, avocation, personal interests or fraternal associations. Would you be willing to be a contributor? _____

(Yes or No)

(Our Editorial department will assist where necessary)

5. I'd like to see more advertising in the magazine _____

(Yes or No)

Please answer other side also ☐

APPEARANCE

1. We have tried to inaugurate a policy of constant change in the appearance of the magazine. Each issue has a different cover. There has been a steady turnover in captions and column heads. Design has played an important part in the makeup of the publication. Check the boxes most appropriate to your thinking:
 - A ☐ I like the "constant change" concept. Keep it up.
☐ I think that there is too much change—the reader can't maintain a feeling of continuity.
☐ I think there should be even more change.
 - B ☐ I like the emphasis on design, and color.
☐ I'd like to see more design.
☐ I think there should be more reading matter, less illustration.
☐ I'd like to see color on the inside pages.
 - C ☐ I think you have been too modern, too undignified.
☐ I think you should be even more modern—experiment more.
☐ I like the magazine the way it is.
 - D ☐ I'd like to see greater coverage, more pages.
☐ The size is right.
2. We have experimented with several type faces for reading matter over the past year. Certain typefaces lend themselves to certain subjects. Some of these typefaces can be found in this issue. Which do you prefer as a "standard" typeface for ease of reading and for appearance?
☐ Body copy on page one ☐ Body copy on page seventeen
☐ Body copy on page three ☐ Body copy on page twenty-four
☐ Body copy on this page

EDITORIAL POLICY

1. Our statement of editorial policy has been that *any* member of the fraternity has a right to express his opinion in print, frankly, expecting frank rebuttal without rancor . . . as long as his opinion does not reflect badly on the fraternity as such and cause it damage. When a highly explosive issue arises within or without this concept, both sides of the question should be presented in print. What is your opinion of this policy?

page twenty-eight B
the quill and scroll

2. In the interest of trying to attract the greatest number of readers, we have been concentrating on *interesting* articles versus statistics and dry coverage of routine events. This has led to the expanded coverage mentioned in the second question under "Content." It has also led to emphasis on the article rather than the author, less straight autobiographical reading and a division between fraternity-oriented copy and extraneous copy. Please check the box most appropriate to your thinking:

- ☐ I feel that readability should continue to be emphasized.
- ☐ I'd like to see more autobiography and more fraternity-oriented material without sacrificing readability.
- ☐ The magazine should concentrate on KDR and forget extraneous matter.
- ☐ I'd like to see more extraneous matter.
- ☐ I'd like to see greater coverage of both.
- ☐ I think it's O.K. as it is.

PERSONAL

All we ask is that you print your name and address *if you wish*, but *do not omit your year of graduation and chapter*—this is important in evaluating the response. Please mail this promptly . . . we need to hear from every reader to come up with a valid survey. Thank you.

Name Grad. Date

Address Chapter

City State Zip Code

Send any additional comments on a separate sheet.

Clip page on dotted line and send to Editor

Alumni Worldwide



Richard V. Baldry

Lambda '50, is a stock broker with Irving Lundborg & Co. in Sacramento, Cal. He is President of the Bond Club of Sacramento, a member of the Sutton Club and the Sacramento Trapshooting Club.

Clifford J. Berschneider

Xi Hon, has been promoted to Associate Professor on the Colby College faculty.

Robert W. Bruce

Lambda '26 is Assistant Vice President of Pacific Telephone Co., in its San Francisco office. He is a member of the Press Club, the Union League Club, the Commonwealth and Transportation Clubs of San Francisco.

Carl R. Carlson

Lambda '42, San Francisco Volkswagen dealer, completed a two year term as President of the Volkswagen National Dealer Council recently.

Dr. Paul W. Gates

Xi '24 has just had a new book, *Agriculture and the Civil War*, published by Knopf.

Kenneth R. Gesner

Xi '53, a National Alternate Director, is now Northeast Director for the Society of Chartered Casualty & Property Underwriters.

Stanley R. Gillette

Lambda '50 is manager of the Euclid Citrus Association in Porterville, Cal.

Ivan D. Hagar

Alpha '09 celebrated his 80th birthday January 6, 1966. Brother Hagar was largely responsible for the development of the Titanium Division of the National Lead Company. After his retirement he returned to Middlebury where he has become one of the town's leading citizens. One of KDR's first initiates, he is now President of the Alpha Alumni Association.



Craig Kennedy (above)

Rho '41 is running for N. J. State Senator this fall on the Conservative Party ticket in Bergen County. Craig is an officer of the Lafayette Class of '41 holding its 25th Reunion this summer.

Lester Kennedy

Rho '44 has been transferred by Swift & Co. to Atlanta, Georgia.

Donald G. Leach

Xi '49 has been appointed Manager of Traffic & Distribution for Keyes Fibre Co. in Fairfield, Maine.

Rev. Lemuel K. Lord

Xi '29, has been presented with a Distinguished Alumni Award by Boston College.

Stanley S. Peterson

Lambda '48, is a CPA with Charles H. Peterson & Co., Mountainview, Calif. He has been a forester, member of the Board of Directors of the Mountainview Chamber of Commerce and the Santa Clara County Estate Planning Council.

George Redpath

Xi '61 has taken on new duties as newscaster for Channel 6 ABC-TV, Philadelphia, Pa.

John G. Smale

Lambda '24 is a professor at Chico State College following 16 years of teaching in Fresno High Schools. He is also a member of the Chico city library commission, city planning commission and the Butte County planning commission.

Archie J. Twitchell

Xi '58 has been appointed City Manager of Grants Pass, Oregon.

J. W. Van Gorkom

Eta '41, has been appointed to the National Public Advisory Board, Secretary of Com-

merce John T. Connor has announced. The 25 board members who are asked to provide expert counsel on problems of local and regional development held their first meeting in Washington Jan. 25. Van Gorkom, president of the Union Tank Car Co., Chicago, will serve on the board for three years.

Thomas P. Williams, Jr.

Lambda '38, is a civil engineer with Bowman & Williams, Santa Cruz, Calif. Prior to his present post he was employed by the County of Santa Cruz and the State of California.

CHAPTER ETERNAL

William H. Carter

Alpha '10, retired Vermont school administrator, died unexpectedly at his home in Paxton, Vt. December 7, 1965. He was on the planning committee for the new Greenfield High School. He had lived in Greenfield for 13 years, coming from Johnson, Vt., where he had been President of the Teachers' College. He had also been principal of the Vergennes (Vt.) High School and Superintendent of Barre (Vt.) public schools prior to his Johnson College service. Brother Carter had done post-graduate work at Middlebury, UVM, Columbia and Harvard. He was a member of the Retired Men's Club and Rotary Club of Greenfield and a past president of the Rotary Club of Morrisville.

Charles R. Dennison

Rho '27 of 727 Dartmouth Ave., Silver Springs, Md.

page thirty
the quill and scroll

Robert M. Waugh

Xi '27 has been named Chairman of the Language Department at Berlin High School, Berlin, N. H.

Kenneth G. Wolfe

Lambda '42 is an estimating engineer with Bechtel Corporation, San Francisco, Cal.

Jay Whitman

Xi '59, appeared as Marco in the Blue Hill Troupe, Ltd. performance of Gilbert & Sullivan's "The Gondoliers." □

James G. Jobes

Mu '29 died on March 10, 1966. Jim's home was in Los Angeles and he was retired from the United States Army Engineers. He had spent most of his working career in the Los Angeles office of the Army Engineers. He is survived by his wife Phyllis.

Fritchof T. Sallness

Mu '25 died on March 7 at Saginaw, Michigan. Fritz was a lawyer and graduated from Law School at Michigan in 1929. He was a past president of the Saginaw Bar Association. About five years ago he took practically the entire year away from his office and as he was the Supreme Governor of the Moose, he spent that time visiting lodges all over the hemisphere. He is survived by his wife Marion. □



the family tree summary

omicron—Butler University

Chairman of the reactivation committee is James W. Goble who may be written c/o Eli Lilly & Co., Indianapolis, Indiana.

phi—University of Oklahoma

mu—University of Michigan

Information regarding reactivation should be sent to the Editor or the Executive Secretary (see back cover for addresses).

tau—Carnegie Institute of Technology

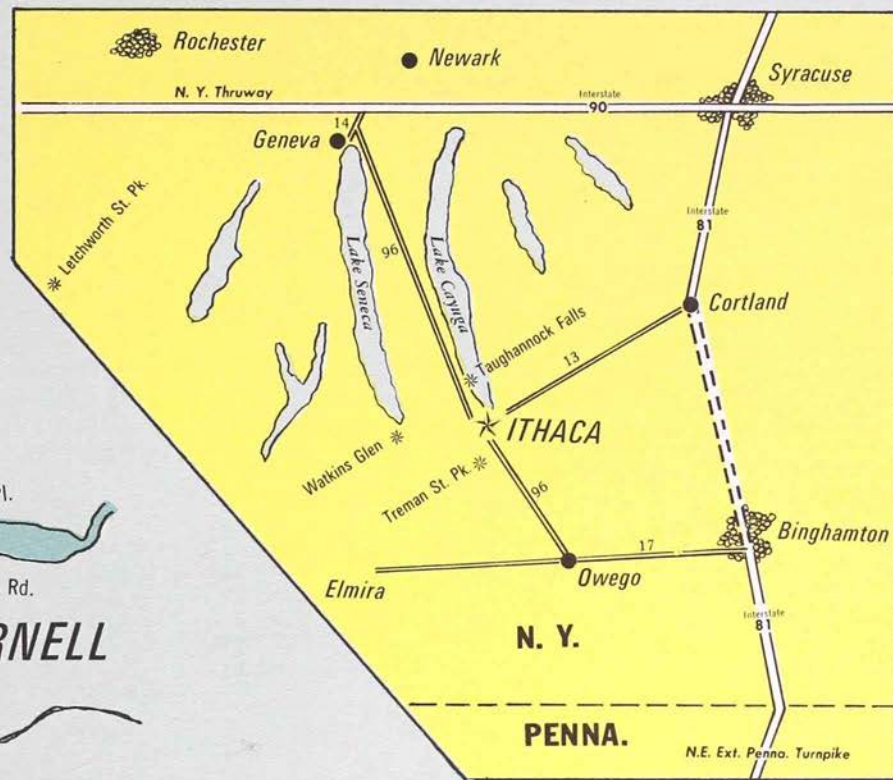
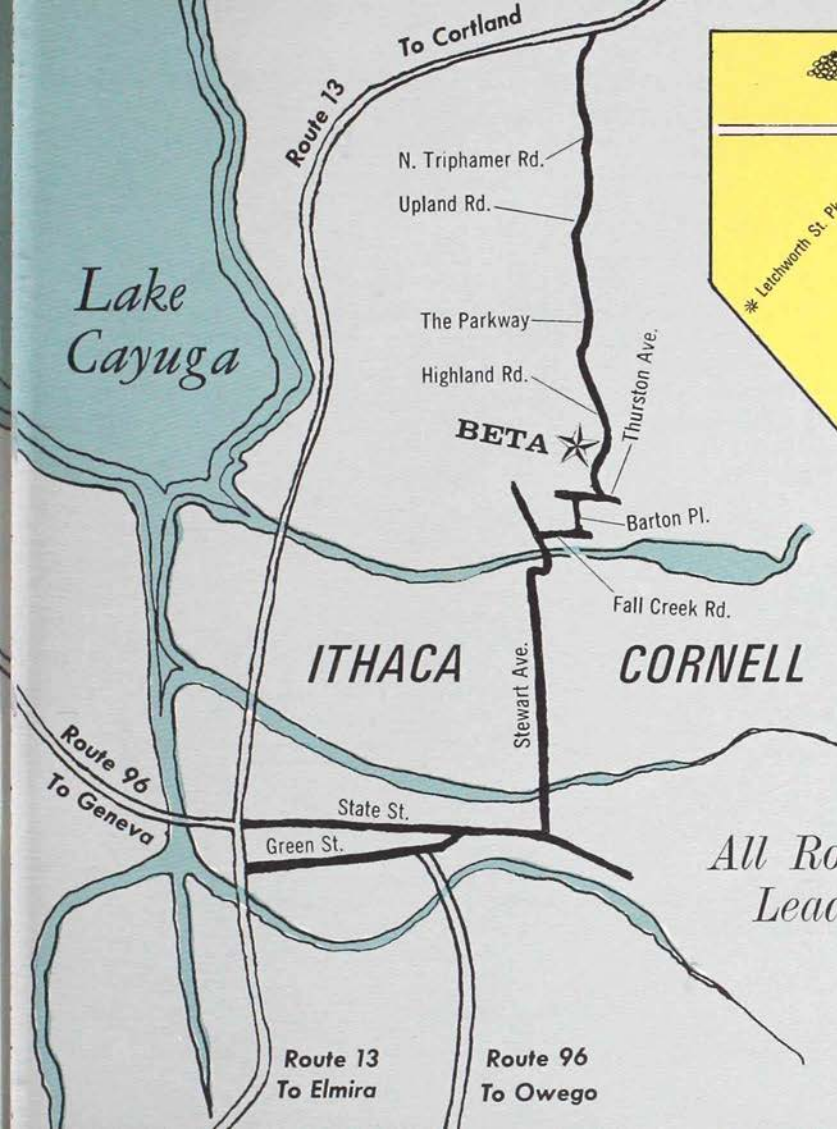
Interested parties should get in touch with William J. Moore, 25901 Tungsten Road, Cleveland, Ohio 44132 or the Executive Secretary.

upsilon—Fresno State College

Mail should be addressed to Monroe T. Smartt at the Southern California Alumni Association address.

chi—University of Florida

On-the-spot contact man is James A. Winchester, Everglades Experiment Station, P.O. Drawer A, Belle Glade, Florida 33430.



*All Roads
Lead to Ithaca*

This simplified road map can be used
as a guide for those arriving by car.

NATIONAL DIRECTORY

DIRECTOR EMERITUS National Historian

George E. Shaw
Scarswold Apts., 3D
Garth Road, Scarsdale, N. Y.

OFFICERS AND DIRECTORS

President John R. Padgett (1966)
P.O. Box 504, Findlay, Ohio 45840
Vice President Robert J. Fox (1970)
421 Passaic St., Hackensack, N. J. 07601
Treasurer Robert D. Corrie (1966)
P.O. Box 726, Garden City, N. Y. 11530

DIRECTORS

Harold S. Locke (1966)
4928 Elks Drive, Columbus 14, Ohio
Monroe T. Smartt (1968)
1747 W. 27th, San Pedro, Calif. 90732
Richard W. Nolan (1968)
10 Mann Ave., Muncie, Indiana
Floyd R. Baughman (1970)
553 Hawthorn Ave., Hawthorn, N. J.
Thomas A. Pyle (1970)
70 East Walton
Chicago, Ill. 60610

EXECUTIVE OFFICE

481 N. Dean St. Englewood, N. J. 07631
A. Lawrence Barr, Executive Secretary
Mrs. M. Radespiel, Office Secretary

ALTERNATE DIRECTORS

Terry D. Mayo
577 South St., Waltham, Mass.
Kenneth R. Gesner
314 Pearsall Ave., Ridgewood, N. J.
William P. Butz
312 Jefferson Dr., W. Lafayette, Ind.
Ellsworth M. Smith
210 Geiser Avenue, Waynesboro, Pa.
Vincent Majkowski
58 Pavonia Avenue, Kearny, N. J.

EDITOR, QUILL & SCROLL

Charles F. Beck
R.D. 1, Box 529, Macungie, Pa. 18062

LEGAL ADVISORS

Leo T. Wolford
501 S. Second St., Louisville 2, Ky.
Bruce K. Byers
441 E. Glenn Ave., Ridgewood, N. J.

NATIONAL CHAPLAIN

The Very Rev. Harold F. Lemoine
87 Fifth Avenue, Garden City, N. Y.

RITUAL COMMITTEE

Chairman: Richard W. Nolan
George E. Shaw

NAT'L. FOUNDATION TRUSTEES

Floyd R. Baughman George E. Shaw
Robert D. Corrie Orrin G. Judd
Roswell W. Corwin

CHAPTERS

Alpha—Middlebury College
Consul—Scott S. MacFadyen
48 South St., Middlebury, Vt. 05753
Beta—Cornell University
Consul—Richard L. Wilhelmson
312 Highland Road, Ithaca, N. Y. 14850
Delta—Colgate University
Consul—Larry J. Carroll
Hamilton, New York 11346
Epsilon—Franklin College
Consul—Ronald H. Cohen
214 State St., Franklin, Ind. 46131
Zeta—Pennsylvania State Univ.
Consul—William H. Topper
420 E. Prospect Avenue
State College, Pennsylvania 16801
Eta—University of Illinois
Consul—Lawrence S. Darkin
1110 S. 2nd St., Champaign, Ill. 61822
Theta—Purdue University
Consul—Gerald L. Murray
1134 Northwestern Avenue
West Lafayette, Indiana 47906
Iota—Bucknell University
Consul—Robert D. Lynd
College Hill, Lewisburg, Pa. 17837
Kappa—Ohio State University
Consul—William G. Buchholz
1985 Waldeck Ave., Columbus, Ohio 43201
Lambda—University of California
Consul—W. David Sharon
2601 LeConte Ave., Berkeley, Calif. 94709
Nu—Indiana University
Consul—Richard W. Ham
1075 N. Jordan Avenue
Bloomington, Indiana 47403
Xi—Colby College
Consul—Robert M. Gruber
Waterville, Maine 04901

PI—Gettysburg College

Consul—William Stillgebauer
249 Carlisle St., Gettysburg, Pa. 17325

Rho—Lafayette College

Consul—Richard M. Thuring
Easton, Pennsylvania 18042

Sigma—Oregon State University

Consul—Larry J. Springer
140 N. 23rd St., Corvallis, Oregon 97330

Psi—Lycoming College

Consul—Daniel E. Wolfe
Williamsport, Pennsylvania 17704

Omega—Indiana University (Penna.)

Consul—Larry M. Rigo
220 S. 7th St., Indiana, Pa. 15701

Alpha Alpha—

Lock Haven State College

Consul—George J. Myers
220 W. Main St., Lock Haven, Pa. 17445

Beta Alpha—C. W. Post College

Consul—Raymond C. McGreevy
P.O. Box 247, Greenvale, L.I., N.Y. 11548

COLONIES

Bradley University

Consul—Philip M. Colgan
1501 Fredonia Ave., Peoria, Ill. 61606

ALUMNI ASSOCIATIONS

Chicago Area

Chairman—William J. Walton
6535 Forest Ave., Gary, Indiana

Northern New Jersey

President—Kenneth R. Gesner
314 Pearsall Ave., Ridgewood, N. J.

Southern California

President—Monroe T. Smartt
1747 W. 27th, San Pedro, Calif. 90732

Central Indiana—

Application pending

Return Magazine to

Second Class postage paid at
Englewood, N. J. and at additional
mailing offices.

Kappa Delta Rho Fraternity
Oprandy Bldg., 481 N. Dean St.
Englewood, N. J. 07631
Return Postage Guaranteed