

Lambda's
current
home at
Berkeley
California



THE QUILL AND SCROLL

of Kappa Delta Rho

FEBRUARY

1960

National Directory

OFFICERS AND DIRECTORS

Pres. Floyd R. Baughman (1962)
1836 Longview Court,
West Englewood, N. J.

Vice Pres. O. D. Roberts (1962)
Dean of Men,
Purdue University,
West Lafayette, Indiana

Treas. Robert D. Corrie (1960)
P. O. Box 36,
West Hempstead, N. Y.

DIRECTORS

E. Mayer Maloney (1960)
335 South Jordan Avenue,
Bloomington, Indiana

Merle W. Garing (1960)
2561 Carisbrook Drive,
Oakland, California

George E. Shaw (1960)
Scarswold Apts., 3D,
Garth Road,
Scarsdale, New York

Frederic T. Closs (1962)
402 Mansfield Street,
Belvidere, New Jersey

John Hoben (1964)
Hamilton, New York

Kenneth C. Kramer (1964)
Box 851,
State College, Pa.

O. L. Doud (1964)
88 La Burnum Rd.
Atherton, California

ALTERNATE DIRECTORS

Robert D. Corrie (1960)

John Padget (1960)
Mounted Route,
Bettendorf, Iowa

James Hertling (1960)
312 E. Franklin,
Delphi, Indiana

RITUAL COMMITTEE

John Padget
James Hertling
Richard Nolan

EDITOR QUILL AND SCROLL

Charles F. Beck,
R. D. No. 1
Macungie, Penna.

SCHOLARSHIP ADVISER

John Hoben

EXPANSION COMMITTEE

O. D. Roberts, Chairman
O. L. Doud
John Padget
James Hertling

LEGAL ADVISERS

Orrin G. Judd,
655 Madison Avenue,
New York, 21, New York

Leo T. Wolford,
501 So. Second Street,
Louisville 2, Kentucky

NATIONAL HISTORIAN

George E. Shaw

NATIONAL CHAPLAIN

The Very Reverend
Harold F. Lemoine,
87 Fifth Avenue,
Garden City, New York



THE QUILL AND SCROLL

Official Publication of Kappa Delta Rho

KAPPA DELTA RHO FRATERNITY

Founded at Middlebury in the spring of 1905 by *George E. Kimball, Gino A. Ratti, Chester W. Walch, Irving T. Coates, *John Beecher, Thomas H. Bartley, *Benjamin E. Farr, *Pierce W. Darrow, Gideon R. Norton and Roy D. Wood.

*Deceased

THE QUILL & SCROLL

Business office, Box 36, West Hempstead, New York.

The Quill and Scroll is published four times a year, in February, May, September and November.

Entered as second class matter at the Post Office at Easton, Pa.

Publication Office—535 Northampton St., Easton, Penna.

Printed by Correll Printing Company, Inc., Easton, Penna.

Subscriptions are available only to life members of the fraternity at \$10.00 each.

Notice of change of address, giving both old and new address should be forwarded at least thirty days before date of issue.

All manuscripts and correspondence submitted for publication should be addressed to the Editor, Charles F. Beck, R.D. No. 1 Macungie, Penna. Photographs should be sharp, glossy prints. Halftone cuts: 120 line screen.

Circulation this issue: 7700



Member of the National
Interfraternity Conference



VOL. LXVI NO. 1

FEBRUARY 1960

THE QUILL AND SCROLL

of Kappa Delta Rho

SPECIAL FEATURES

PAGES

K.D.R. Photo Contest . .	2
International Incident . .	3
Lambda has a New Home	11
Candidates for	
Advanced Degrees . .	20
Planning for	
National Convention . .	21
Rho to Wipe Out Mortgages	23

REGULAR FEATURES

PAGES

The Editor's Forum . .	8
Meet Your Alumni . . .	
Orrin Judd	12
Alumni Across the Nation	13
Chapter Chatter	16
Alumni Association	
Roundup	21
Pages from History . . .	26
Why Not	27

ANNOUNCING AN ALL-KDR

PHOTO CONTEST

With the advent of 1960, the Quill and Scroll is inaugurating a photography contest open to any and all members and pledges of the fraternity. The theme of the contest is the "New" K.D.R. as exemplified by the revived activities of the National. Winning photographs will be given the honor of appearing on the cover of this magazine. Complete rules and directions follow:

1. All pictures are to be at least 7 x 9 inch glossy prints.
2. All photos must reflect K.D.R. in some way:
(i.e. standard or unusual shots of chapter houses; close-ups of

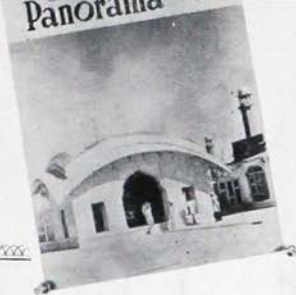
important K.D.R.s; photos showing graphically the ideals of the fraternity; current events of importance to the fraternity . . . or anything your imagination can come up with that pertains to the fraternity.

3. Each photograph should be accompanied by a brief caption or paragraph stating its identity and purpose.
4. Photographs will be judged on artistic merit, fraternity consequence and contemporary importance.
5. Judges will consist of an Art Director, an officer of the Na-

tional (to be selected) and your Editor.

6. The Contest will close at a time to be announced in the May issue.
7. Four winners will be chosen . . . and Honorable Mentions, should the quality of the entry prove better than average.

We urge you to support this contest as one of the many ways to help vary the content of The Quill and Scroll and provide interesting reading for our circulation. Too, this should help display the widespread character and ingenuity of the fraternity across the nation. Good luck . . . and start the shutters snapping!

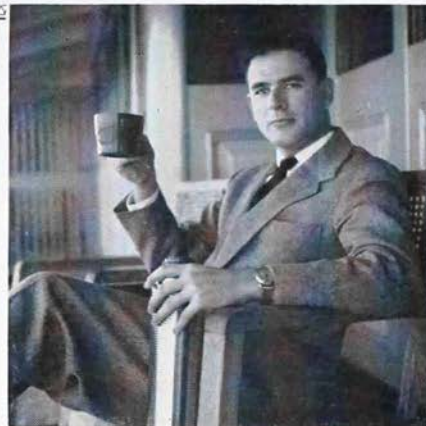


International Incident

THE STORY on the following pages is taken from an article in the August 1959 issue of *Panorama*, published by the Karachi, Pakistan office of the Foreign Service of the United States. The magazine was forwarded to us by Howard Neuberg, Eta, Assistant Cultural Affairs Officer at Dacca. We quote from his covering letter . . . dated September, 1959.

"I don't know if the article about a Pakistani member of K.D.R. becoming president of the Colgate student body received any play in the States, but here the story will be seen by thousands all over both wings of Pakistan."

We had withheld this article from our November issue awaiting photographs from brother Neuberg. Although a few months delay is not a long wait for overseas mail from an exceptionally busy foreign officer, we were deeply gratified when they arrived shortly after this current issue was sent to the printer. As a result, the format of the magazine has been revised to enable us to print the story with its original accompanying illustrations. Should your copy of the February issue be late, it is due to this most excusable reason.



Howard G. Neuberg, Eta '52 . . . taken during an official trip to Barisal Branch Center, December, 1959. The ship is the "Rocket" — one of several of the Joint Steamer Company servicing towns and villages on the Ganges river network—most of them inaccessible by road or air. For further information about Howard, see page 26.



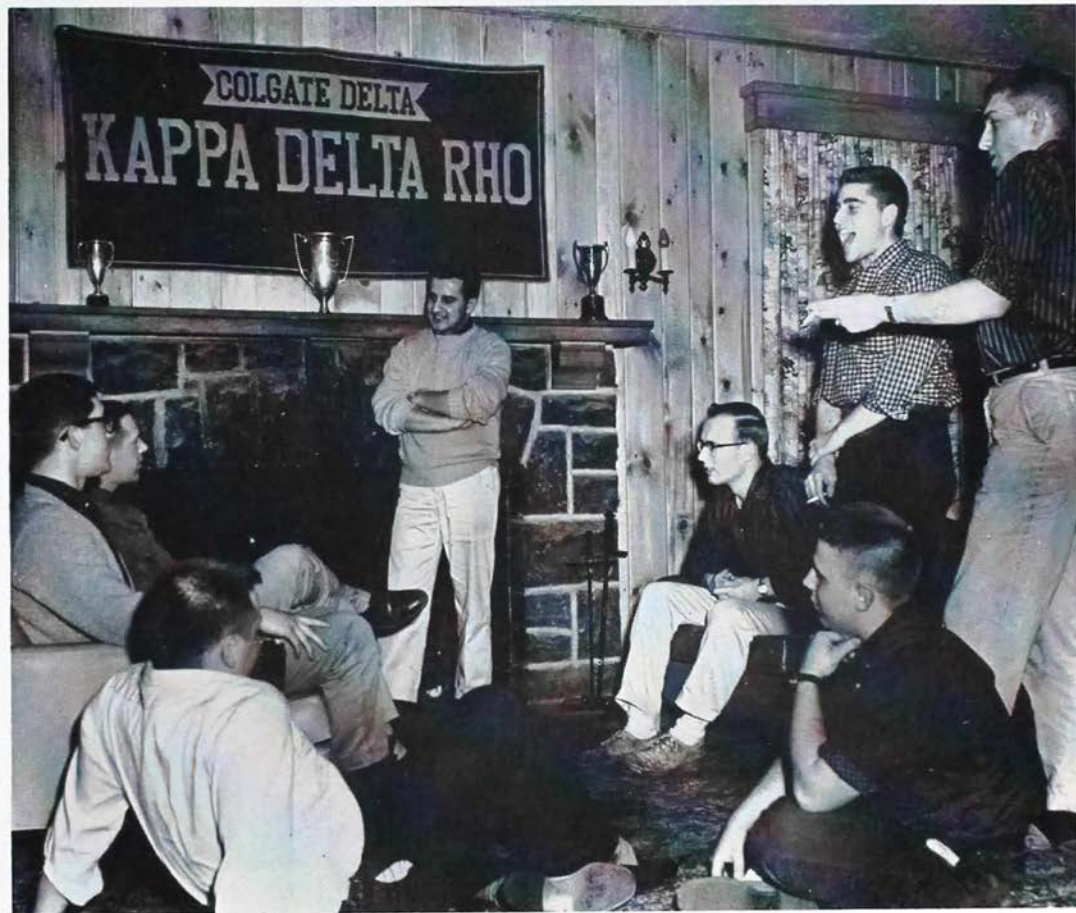
ANIS K. SATTI, a twenty-year-old student from Rawalpindi, is the first foreign student ever elected as president of the student body of Colgate University, Hamilton, New York.

Mr. Satti, who has been studying international relations at Colgate for the past three years, is also President of the Colgate International Relations Club; Vice-President of the International Relations Clubs of the Mid-Atlantic Region, New York City, a member of the Colgate Debate Team, Konosioni, a senior honorary society and the Kappa Delta Rho Fraternity. His name also appears in the *Who's Who in American Colleges and Universities*.

His election as President of the student body, Satti terms as the greatest honour one could have on the campus. "This has given me a much better insight into the life of the American student," he says. "I've learned to work with many different types of individuals."

After his first visit to the United States as the Pakistani delegate to the *New York Herald Tribune* Youth Forum, he decided to return to the United States to finish his education. He was attracted, he said, by the informality of the American school, the friendliness of American students, as well as the scope of the school curriculum.

(Continued on following page)





*Luncheon at the
Fraternity house.*



*Classroom presentation
of Pakistanian flag to
Charles Wilson,
chairman of the
History Department.*



"I very much like the informal classroom atmosphere. There is ample opportunity for discussion, and the student has a close relation with his teacher. Although it is more relaxed than at home, education in America makes one look on a broader perspective. There is an opportunity to think in 'global' terms, which has really broadened my outlook. I would like to get the equality of opportunity prevalent in America to form the basis of our own thinking in Pakistan."

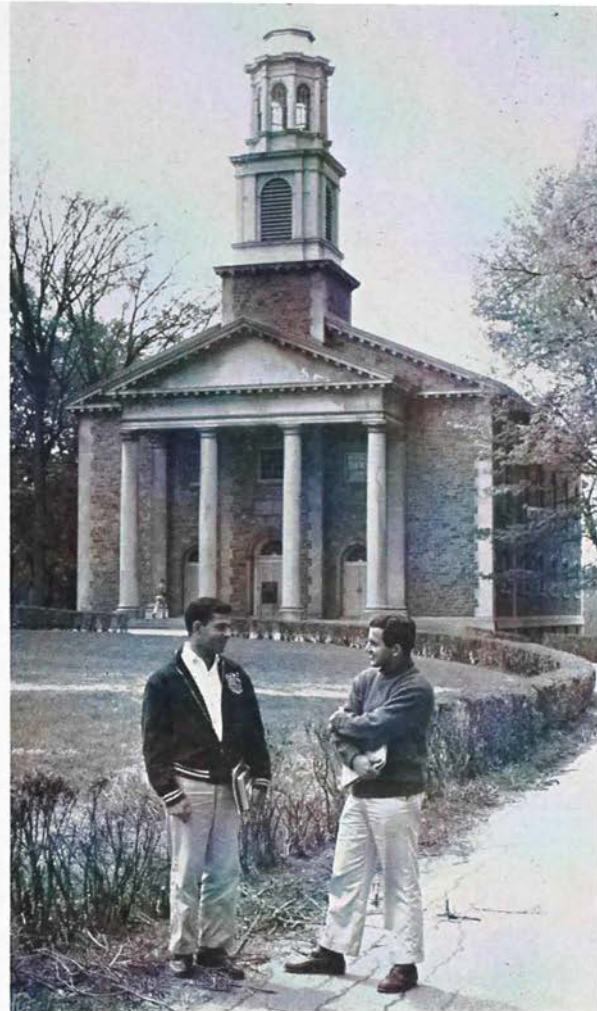
Satti is highly appreciative of American hospitality. "The American," he says, "is extremely hospitable and warm toward foreigners. He is eager to know of the background and homeland of others."



*Satti addresses
Colgate Student
Council.*

America is governed by a state of mind in which everyone feels urged to do the best he can. He puts all he has, physically and mentally, into any particular project he is involved in. There is always the urge on the part of Americans to live up to their cherished ideals. For example, the American people today are very aware of the racial problems they face. In time, there will be a solution."

Mr. Satti is a graduate of Lawrence College, Murree, Pakistan. He is the son of Mrs. Zainab Satti of Rawalpindi, Pakistan.



*Anis talks with
Bijan Jalili from
Teheran, Iran on
The quadrangle.*

The Editor's Forum

History has labelled John Wilkes Booth an assassin. Brutus lives chiefly in memory as a man of the same stripe. But we do not know the other side. Both men *thought* they were doing their nation a glorious service. And both men had a modicum of right on their side. The place where they failed is in the manner in which they accomplished their "service". Deceit became the means to an end.

This is a rather inexact parable of a situation the Editor finds himself in as this issue goes to press. We received a carbon copy of a letter addressed to Brother George Shaw . . . presumably written by a K.D.R. who lacked the courage of his convictions since he did not sign his name to the letter. Frankly, we do not like it. We strongly prefer a man who will call his name his own.

As a result, this letter will not be published . . . as it probably should . . . in its entirety. But here is the crux of the problem:

Brother Shaw took a forthright stand in the last issue on the question of the housing situation. Whether we agree with him or not, he wrote the article, stated what he believed and signed his name to it. Our unknown correspondent differs with Brother Shaw emphatically . . . and some of his points are good ones. But he hides behind the anonymity of an unsigned manuscript. Despite my original editorial feelings to mention the matter and forget the issue, there *is some* meat here that can do us good. The Housing situation is a continuing challenge to the future of K.D.R. as it is to many fraternities, and both sides

of a question deserve to be heard. There *are* two sides, and an honest controversy can stimulate action better than a stated opinion unchallenged. What does the Editor do?

Here are just a few of the stronger points made . . . quoting Mr. X:

"You make the premise that a small undergraduate chapter is desirable because it has less financial pressures . . . allows more time to promote brotherhood and scholastic training.

"First . . . this is negative education to undergraduates in our chapters and a sure way to convince alumni members like myself that we shouldn't even try to compete or strive or consider contributing funds to the chapters . . . and the fraternity.



"Secondly . . . (let's) wake up to realities. Money doesn't make a great fraternity, a great university or a great business concern . . . *but* do you know of any great fraternities . . . universities . . . business concerns without great funds (and great financial pressures)?

"Third . . . you are advocating smallness at the very moment when the destined-to-grow-to-greater-importance universities and colleges are on the threshold of a great enrollment spurt . . . Whether (we) like it or not, if K.D.R. wants to continue living, it has to keep pace with other campus organizations. Throughout the nation, I observe, the typical undergraduate chapter has 60-75 members . . . you can bet this number is bubbling up and that, in general, those fraternities at every school who are

now the most competitive and most respected in campus rushing are the larger-sized chapters. K.D.R. should begin preaching bigness . . . if it wants to lift itself up . . . Let's stop negative recommendations.

"It behooves K.D.R. to get some first-class, optimistic aggressiveness . . . and launch an expansion program in number of chapters . . . size of chapters and in programming and services."

My comments have already been made on this matter, but I should like to answer Mr. X a little more fully. Brother Shaw's views were his own—and do not *necessarily* reflect the National thinking. What has happened within the past year? We have a new "*Quill and Scroll*" that is growing in interest with each issue. We have a new, young, splendidly-trained-for-the-job Exec-

utive Secretary. We have a stirring of interest heretofore dormant. This is *not* a going expansion program, true, but that is already in the cards and partially in progress. There is a crying need for interested Alumni willing to devote time and effort toward helping a National handicapped by both inadequate funds and competent but overworked officers. If Mr. X could devote more of his criticism to concrete action (and let there be disagreement as long as everyone is working toward the same goal, as I am certain we are) in support of an ambitious program, we would welcome him with open arms. But not as Mr. X. Let him come out above board and join the crew, that's doing its darndest to get the fraternity back on its feet. There'll be no hard feelings as long as the interest is sincere.



- Top photos — Typical study rooms.
- Left — Front of Fraternity house.
- Right bottom — Fireplace setting.
- Left bottom — Steins on dining room ledge. Each member gives one when initiated. When he returns as an alumnus, his stein is available.



Lambda Chapter Has a New Home

The members and pledges recently moved into a much larger and more pleasant building on the University of California campus at Berkeley.

The relocation entailed a change from the southeast corner of the campus to the northern edge. Neighbors in the new site include Lambda Chi Alpha, Sigma Alpha Mu, Alpha Tau Omega, and several cafes.

Lambda had been in its smaller old house since 1946. Members were already beginning to feel conditions cramped before representatives of the University appeared with a warning that the school would soon need the house for office space. In 1957, the University politely suggested that it might be wise for the chapter to look around for a new home.

Lambda's active Alumni Association went right to work on the

task of finding an existing house to rent or buy, or a site for building. A look at the chapter's building fund and the sky-high property prices in Berkeley made it obvious that building or buying was out of the question at the time. With that settled the alumni began looking for a place to rent.

The University indicated that its plans for the older chapter house were not coming along as rapidly as scheduled, so the Alumni Association had more time to search for a good opportunity. This finally turned up in spring 1959 when Delta Phi Epsilon sorority decided to move from its house to a larger plant.

An arrangement for the use of the Delta Phi Epsilon house was signed, and plans for the move were made. On August first, a small crew of actives who were living in the house during the sum-

mer and a group of alumni moved a thirteen years' collection of furniture and paraphernalia from the old location to the new one.

This done, the delicate problem of changing the gender of the house was tackled. The brothers decided that pink rooms with organdy curtains were not particularly good selling points, with rushing only a few weeks in the future. The rest of the membership was called back from summer vacation a week early in order to correct said situation. Enormous quantities of paint, putty, hard work, and refreshments (and a lot of cleaning up after spilled paint) soon made the house presentable.

The next problem involved digging out a rumpus room and bar in the basement. A crew of actives and pledges lowered the dirt floor of the basement to the proper level,

(Continued on page 26)

Orrin G. Judd, Delta '26, Lawyer, Public Servant



Editor's Note: Ever since the appearance of the Bill Myer story in last May's initial issue of the "new look" Quill and Scroll, we have had many letters of commendation on the handling of the subject matter . . . and regrets that this biographical treatment of well-known Alumni could not be continued as a regular feature. Under the title "Meet Your Alumni" we have decided to continue such coverage with Brother Orrin Judd's life story to date, and while we cannot guarantee that this section will appear in every issue, we hope to make it at least a bi-yearly attraction.

IN 1837, Orrin Bishop Judd, grandfather of Orrin G. Judd, entered what was then known as the Hamilton Literary and Theological Institution . . . fore-runner of today's Colgate University. Sixty-nine years later, Orrin G. Judd was born in Brooklyn, N. Y. Follow-

ing the family tradition, he too turned to Colgate . . . becoming Editor of the Maroon, manager of the Glee Club and captain of the cross-country team. Besides joining Kappa Delta Rho, he was a member of Phi Beta Kappa scholastic honorary fraternity.

After a year of graduate study at the Sorbonne in Paris, Brother Judd entered Harvard Law School graduating summa cum laude in 1930. It was during his days at Harvard that he did his first legal work—drawing a mortgage indenture and securing an issue of second mortgage bonds which were sold to Delta Chapter alumni, friends and parents, to finance Delta's new chapter house. (Continuing the active interest in Delta, Brother Judd was the successful chairman of a committee formed last year to finance repairs and pay off the chapter's second mortgage). He was selected as law clerk

(Continued on page 25)

Alumni Across the Nation

Bert C. Amidon

Beta '59, son of Mr. and Mrs. Chauncey Amidon, Route 2, Seneca Falls, N. Y., recently completed the officer basic course at The Infantry School, Fort Benning, Ga. During the ten-week course 2nd Lieutenant Amidon and other new-



ly commissioned officers who have not yet served with troops, were familiarized with the duties and responsibilities of an infantry unit commander. Brother Amidon graduated from Mynderse Academy in 1954 and from Cornell University in 1959.

John P. Brennan

Lambda was aboard the heavy cruiser USS HELENA (CA-75) this past summer for a month-long training cruise along the Pacific Coast. He is pictured here during the mid-summer cruise courtesy of the Navy Public Relations Officer on the Helena. (right)

Ports of call for these First Class Midshipmen included the ship's home port of Long Beach, plus visits to San Diego, San Francisco, and Seattle.



A. B. Carlson

Eta '34, Chief Engineer and recently made a V. P. at Conco Mfg. Co. in Mendota, Illinois.

Harry E. Chesebrough

Mu '32, general manager of the Plymouth-De Soto-Valiant division of Chrysler Corp. has been elected 1960 president of the Society of Automotive Engineers.

Chesebrough will be officially installed during SAE's annual meeting in Detroit.

Wayne E. Conery

Eta '55, assistant manager of public information at the University of Illinois Hospital and Chicago Professional Colleges, has been appointed director of public relations for Research Hospital in Kansas City, Robert E. Adams, hospital director, announced today (Jan. 4).

Conery is a 1955 graduate of the University of Illinois College of Journalism.

The appointment becomes effective Jan. 20.

He succeeds Tom Faulkner, who became director of public relations for Wesley Hospital in Wichita, Kansas in November.

Research Hospital is presently undergoing a \$12 million expansion program. A new 400-bed hospital and medical center will be opened in Kansas City early in 1961.

Conery, 26, joined the U. of I. Chicago branch in January, 1958. Prior to that he spent 19 months in the U. S. Navy Public Information Department at the Pentagon in Washington, D. C.

From June 1955 to March 1956 he was assistant editor of Piano Trade Magazine in Chicago.

Conery is married to the former Lynn Steiner, of Des Plaines, Ill., and has a son, Timothy, six months.

He is a native of Rockford, Ill., and is a member of the board of directors of Kappa Delta Rho Building Corporation; Sigma Delta

Chi, professional journalism fraternity, and the Riverside (Ill.) Junior Chamber of Commerce.

Lee T. Corbett

Beta '59, married Marjorie Whitaker of Rochester, N. Y., Dec. 26 in Rochester, N. Y. Lee graduated from Cornell in architecture and is presently a Lieutenant in the U. S. Air Force.

Ferd Ensinger

Alpha '45, sends the following note:

"On the news front, I had the privilege of addressing the fraternity students at Worcester Tech last month and also the National Leadership School of Phi Kappa Theta last September. These two excursions were the first back into the fraternity world in some time. They were fun."

Enclosed was this clipping describing the Worcester Polytechnic Institute meeting.

"On Monday evening, November 30, a Big Brother Seminar at Worcester Tech, sponsored by the Alumni Interfraternity Council was held in Alden Memorial. The purpose of the seminar was to make the pledges and also their big brothers in the fraternities more aware of their duties and responsibilities toward one another and to the fraternity itself. This event is significant on this campus since it is the first time anything of this nature has been held at WPI.

The program for the evening was divided into two parts. In the first part both the pledges and their big brothers were present. The meeting was opened by George V. Uihlein '45, the national executive vice president of Phi Kappa Theta, who represented the Alumni Interfraternity Council. The speaker for this part was *Ferd Ensinger*, a graduate of Middlebury College and for many years the executive secretary of Kappa Delta Rho. In his speech, Mr. Ensinger *empha-*
(Continued on following page)

sized the importance of a man accepting every test of responsibility and ability that is given to him, now while still in school, so that he might get to know himself and what his strong and weak points are, so that he can realize his own capabilities and try to improve his weaknesses."

Howard R. Hannapel

Eta '35, "Howie" is in business for himself at Dowagiac, Michigan. His wholesale plywood company operates under name of the H. R. Hannapel Plywood Co. Howie forsook the pressures of urban living several years ago and now enjoys the serene, peaceful life around Dewey Lake, near Dowagiac, with his charming wife, 2 sons and one daughter.

Reinhard A. Hohaus,

Gamma '17, Metropolitan Life Insurance Company on December 17, 1959 appointed Reinhard A. Hohaus a Senior Vice President and Chief Actuary. Brother Hohaus has been with the Metropolitan

for many years . . . the appointment takes effect January first.

Harry Hynd

Eta '35, Harry is an executive with a large publishing firm. On sunny summer days he can be seen polishing up his already sharp golf game at Glen Oaks Country Club in Glen Ellyn, Illinois.

John Hynd

Eta '35, John is busy running the John Hynd Furniture Co. located at 205 W. Wacker Drive in Chicago. And if John doesn't have what you want be assured he can get it for you cheaper and quicker than any of his competitors. (Unpaid Advertisement.)

R. M. King

Eta '34, in charge of Midwest District sales of General Electric Heavy Industrial Equipment. His home is in LaGrange, Illinois. Dick is still a man of many hobbies including the playing of a clarinet in local symphonic orchestra.

Robert D. Schutt

Eta '34, now is a partner in the Schutt-Huelsman Co. organization, sales engineers located at 5844 W. North Ave., Chicago 39, Illinois. Brother Schutt is responsible for many of the Eta mentions in this issue's column *Alumni Across the Nation*.

Franklin M. Shupp

Zeta '48, reports that since leaving college at Penn State he's lost contact with the brothers at State College, and there is no KDR chapter in his area.

As of August 1, 1959 his position and place of employment is Supervising Psychologist, Bowman Gray School of Medicine, Graylyn School for Exceptional Children, Winston-Salem, North Carolina. Home address: 206 Friendship Circle, Winston-Salem, N. C.

John T. Vernon

Eta '35, John has been a top producer in the life insurance business.
(Continued on page 24)

Chapter Chatter

ALPHA ALPHA TOASTS SWEETHEART

The annual Sweetheart Banquet of Alpha Alpha Chapter was held on Dec. 12th, 1959 in the banquet room at the Dutch Inn. At the climax of the banquet Miss Bonnie Replogle was officially crowned National Sweetheart of Kappa Delta Rho. She was presented with a bouquet of red roses from National. Our chapter presented a trophy to Miss Replogle.

Miss Bonnie Replogle gave a brief talk thanking Alpha Alpha Chapter, as well as National Kappa Delta Rho, for selecting her as their national sweetheart.

In attendance at the banquet were brothers and guests of Alpha Alpha Chapter, and several alumni. Other guests included our advisor and his wife, Mr. and Mrs. McGalvain; our house mother, Mrs. Pantzer; honorary members,



Mrs. Armstrong, and Mr. and Mrs. Calvin Arter.

Our first counsel, Mr. Jim Murphy gave an after dinner talk on progress of the Alpha Alpha Chapter.

Preceding the banquet Mr. and Mrs. Calvin Arter held a cocktail party in honor of Kappa Delta Rho at their home.

At the close of the evening a Christmas Dance with the theme "Silver Bells" was held at the college.

BETA PUBLISHES DIRECTORY

Beta chapter recently published a 1960 directory of all alumni of the chapter, giving current addresses and cross-referenced for geographical location. A further listing by classes is provided in the rear of the 32 page booklet. Such listings are invaluable in linking the alumni and the actives of a chapter.

Editors Note: If every chapter had such a directory, a warm new era of alumni relations would be upon us. The Editor thanks the chapter for his copy of the directory . . . it is invaluable to him, too.

Beta Chapter's Homecoming Weekend was the scene of a bustle of activity from Friday evening right through Sunday dinner. KDR had the largest number of alumni at hand of any Fall Homecoming

Weekend in recent years. Actives and alumni alike were in good spirits despite Cornell's loss to Yale Saturday afternoon.

That morning, Beta's Board of Directors, presided over by "Pete" Powell '24, discussed a few important topics. On the matter of financial policy, it was decided that, with the introduction of a standard bookkeeping system for KDR in 1958, the bookkeeping function of the Quaestor had best be turned over to a professional accountant. At present, Ken Berry, Senior Tribune, heads a committee composed of the Quaestors of last year and this year to find the most applicable arrangement with an Ithaca accountant. In addition, the Board again considered the proposed addition to the physical plant of Beta. Three plans were presented, all in the \$60,000 to \$65,000 total cost range. One of these is a modification of the plans drawn by Tallman, an Ithaca architect; the other two are the work of the two sophomore architecture students in the

House. The consensus of opinion of the Board was that \$60,000 is a feasible figure, and a committee headed by Bob Corrie '53, Corporation treasurer, is looking into ways of raising this amount.

On the 21st of November, Beta conducted its second experiment with drinking in the House. At a party based on the theme of the roaring twenties, Betas and three Psi pledges had available an alcoholic punch for the first time since reactivation. The principal entertainment was supplied by a couple who brought and played a player piano. The gambling casino in the library also contributed to the good time that everyone had. The results of the experiment were not conclusive, except in that we were happy to find our belief verified that the brothers have enough consideration for each other to preclude their becoming obnoxious. The party was definitely a success, but there is disagreement as to why it was so.

Our kitchen has for the past three

years been operating in the black and making a profit due to conscientious buying by our cook and diligent bookkeeping and administration by our stewards. This month we invested in a commercial mixer at a cost of \$500. This item has been sorely needed in the kitchen, especially since over the past two years the total number of people fed has been increasing. Although funds for its purchase already exist, we intend to pay for it out of profits earned in the coming five years, thus deriving benefits while still paying for it.

We have become increasingly alarmed—as has the national—at the growth of what is called an "inactive" undergraduate brother. At Cornell, such "inactive" status can arise from 5th year engineering or veterinary medicine studies, financial or academic problems, or loss of interest in participation in fraternity life. Consequently, a committee within the House was appointed to review this matter.

(Continued on following page)

BETA

(Continued from preceding page)

On its recommendations we have, by enactment of a new by-law, virtually eliminated inactive status. In the future, brothers who feel that for any reason they must curtail activities in the House, will meet with the executive committee. They shall then be granted exemption from whatever aspect of responsibility is deemed appropriate by the committee. They will, however, remain active dues-paying members. The only exception will be a brother who, because of conflicting interest, is unable to contribute to, or derive any benefits from the fraternity. He will then be truly inactive. We hope that such cases will be quite rare.

Just after Fall Weekend Beta Chapter obtained a baby grand piano as a result of the efforts of James Estey, a senior last year who is currently on a leave of absence from the University. Because it was felt that the chapter was not in a position to spend even so

small an amount as \$250 (for a remarkably good baby grand plus transportation from Buffalo), the cost was financed by the brothers themselves as well as two alumni whose unsolicited donations were gratefully accepted.

XI FEBRUARY NEWS

In the last issue of the "Quill and Scroll" there was a great deal mentioned about the housing problem facing all fraternities across the country. Therefore, we thought we would fill you in on our position here at Colby.

Our present location is in Butler Hall, which is one wing of a dormitory. We can accommodate forty-eight men in the "house", however we only have thirty-nine living here at the present time.

The recreation rooms in the "house" consist of a lounge on the first floor and a recreation room in the basement. The lounge is used extensively for relaxing, whereas the recreation room is used mostly

for watching TV. When we hold parties the latter is used as a bar and cafe area. The room is pine paneled and contains several murals on one wall.

In looking to the future, we hope to build a house on the campus near fraternity row. Colby will finance 49% of the cost of a fraternity house, but due to raising costs it is hard to determine a definite figure. At present it will cost nearly \$180,000. The architecture will follow the pattern of all the fraternity houses here on campus, which are three story Georgian brick. The basement would consist of a recreation and chapter room, and on the first floor there would be a living room and a study room, plus house mother's quarters. The remaining two floors would contain living quarters for about thirty-six men.

A campaign has been underway for a long while to obtain funds for the new house, but progress has been slow. We now have an alumni campaign chairman, brother

Harold Lemoine, who is giving able leadership to a big undertaking. His task is a big one, and he would appreciate any assistance he can get in running this campaign. Thus we can conclude on an optimistic note, and hope for a house in the near future.

THETA HERALDS CHRISTMAS WITH BALL



The onset of the Christmas season at Theta chapter is heralded annually by the "Embassy Ball," our first formal dance of the year.

The transition from chapter house to embassy ballroom is never an easy one, and our ambitious 1959 version was no exception. However, our work and handiwork resulted in one of the finest dances ever held here.



After a delicious steak dinner in our candlelit dining room, the couples dispersed to get into their formal finery for the dance, which started at nine.

Entry to the ballroom was made through a simulated garden, complete with imitation grass mats, flagstone stepping stones, fresh



flowers and ferns, rose-covered fences and trellises, and a fountain. The highlight of the garden, the fountain, threw up a three-foot spray which constantly changed colors.

At the end of the garden, a flagstone terrace led into the ballroom itself through large French doors.

Flags of all nations were hung around the ballroom to help obtain the embassy atmosphere.

Offset from the ballroom was a refreshment lounge where couples could sit among huge potted ferns

(Continued on page 28)

NOTICE OF UNIVERSITIES SEEKING CANDIDATES FOR ADVANCED DEGREES

■ Since 1945 Princeton has offered a graduate program in engineering plastics leading to the M.S.E. and Ph.D. degrees. This Plastics Program, now well established both through its research results and through its graduates, is unique in engineering education both in U.S.A. and abroad. An indication of its educational success is the special interest which industry has shown in our graduates and the fact that not one of these has since left the field of plastics for which he prepared here.

In spite of this we realize that we are missing many good potential candidates because we have no undergraduate "feeders" such as exist for the standard graduate departments throughout the country. Our source material is mainly mechanical, electrical and chemical engineering students with B.S. degree and we are anxious to make the Plastics Program better known to these young men at the college level.

We should like to inform a larger potential student body of the possibilities

here at Princeton through the local student chapters of your society.

All interested parties are requested to write L. F. Rahm, Director, The Plastics Laboratory, 30 Charlton Street, Princeton University, Princeton, New Jersey.

■ Applications for Training Assistantships in the College Student Personnel Graduate Studies Program at Southern Illinois University, Carbondale, Illinois, for the 1960-61 class are now being received. The College Student Personnel Graduate Studies Program is a two-year (72 quarter hour) master's degree in education. Premised on the fact that there is a critical need for staff in all phases of higher education, the Program is directed toward the development of the generalist who will be prepared to work in various phases—counseling, group activities, residence halls, financial aids, fraternities, admissions—of college student personnel.

Applicants accepted into the Program with a bachelor's degree from an accredited

college, a "B" average or higher in undergraduate courses, and personally qualified to live with students as an adviser and counselor receive room, board, tuition, and \$80 per month or the equivalent for the two academic years of the degree program. The selection committee is interested in the applicant's academic achievement, aptitude to complete graduate study successfully, student activity and community participation, work experience and sense of job responsibility, relationship with student peers and future professional colleagues, and personal qualities—ideals, honesty, integrity, leadership.

Application requests should be made to Dennis L. Trueblood, Coordinator, College Student Personnel Graduate Studies Program, Department of Guidance, Southern Illinois University, Carbondale, Illinois. Inquiries concerning financial aid for graduate study in other academic disciplines should be addressed to Willis G. Swartz, Dean, Graduate School, Southern Illinois University, Carbondale, Illinois.

Alumni Association Roundup

Editor's Note: We have received a request from the actives at Alpha Alpha to publish the following information:

Alpha Alpha chapter is in the process of establishing an active Alumni Association. All graduates are requested to contact the home chapter for further information. Only through the formation of Alumni groups will our chapter grow in importance and influence.

ALPHA ALPHA

**Kappa Delta Rho Building Association
Eta Chapter . . . University of Illinois
5965 N.W. Circle Avenue, Chicago 31,
Ill.**

The Board of Directors meets the third Tuesday of every month and then adjourns for dinner at the Berghoff, W. Adams St. off of West State Street. New directors for 1960 are:

Kenneth Jacobs, President
John L. Hynd, Vice President
C. O. Bernard, Secretary-
Treasurer
C. W. Beile
George P. Wright
Dr. Harold Osborn, Eta Alumni

Advisor

Earl Jacobson
Wayne Conery
L. L. Reid

Editor's Note: To date we have had few communications with the active Alumni Associations . . . but we hope this

dearth of material will gradually be overcome. This column will be open at any time to reports of or about present alumni groups or planned future alumni groups. The column is intended entirely for these groups and their activities as against the column "Alumni Across the Nation" which is devoted to individual personalities.

Planning Continues for National Convention

After the long Winter vacation, plans are beginning to pick up steam toward Nu's contribution to the coming 1960 convention. The committee chairmen have selected personnel to serve on their particular committees, and they have also made up a calendar and outlined their plan of action. The advisory committee, consisting of Mayer Maloney, O. D. Roberts, Dr. Walter Burnham, and James Hertling, plan to meet at Nu during the early part of February. Brother Hertling also plans to meet with the committee chairmen

at this time. After this meeting more data will be available concerning some of the things that have been planned thus far. The committee chairmen and their respective committees are as follows: Publicity—Gary Long; Program—Max Schulze; Entertainment—Mauri James; and Registration, Food, Housing and Hospitality—Jack Shinneman. The men of Theta chapter are going to handle the model initiation at the convention, and Epsilon will be approached with the idea of putting on a model pledge ceremony.



Rho to Wipe Out Mortgages

Brother W. Carson Wallace, Rho Alumni Treasurer, reports that the Lafayette chapter house has paid up its second mortgage and the first will be paid off within the next few months. The money for it is already in the bank.

Back in 1939, your Editor entered Lafayette . . . and Brother Wallace accepted the Treasurer's post . . . at virtually the same time. The outlook was bleak, then. Bills loomed sky-high and my pledge class was very small. The "Rabbit Ranch" as it was known in its more prosperous rushing days (from the hordes of Frosh who broke from the door for 8 a.m. classes) seemed destined for real trouble. Just when there appeared to be some

slight break in the gloom, the rumors of War started, and within a few short years the chapter was inactive. The Army took over the fraternity house and during its occupation certain damages to the interior of the building occurred. In 1946, Summer, your Editor returned to pick up the few credits still left to be secured. The House was a shabby remnant of what it used to be. A few eager pledges and a few returning brothers started in on a refurbishing job . . . paint, hard work, and too few hands. Revitalization of the fraternity was finally accomplished and a golden era started, only to be broken by the Korean War. The house was back on its feet, however, but sadly in need of funds to do

more than just a patch-up job of making things do. An appeal went out to alumni to help provide the more than \$12,000 needed to come out on top. Somehow, somewhere, the money was found without having to dig too deeply into the mortgage funds. Today, brother Wallace can look back on twenty years of scrimping and cutting financial corners with a great deal of satisfaction. The chapter is strong and the debts have been paid. Perhaps K.D.R. wasn't the richest or most prosperous house on campus in all those years, but it can hold up its head with pride in a job well done. Besides brother Wallace, the Rho alumni and actives over twenty years of uphill grind deserve to share in the credit.

ALUMNI

(Continued from page 15)

ness for years and his card lists his office at 209 S. LaSalle St. in Chicago.

Al Wagner

Eta '35, Chief Engineer at National Cylinder Gas Division of Chemetron, plant located in Cicero, Illinois.

Leonard A. Waldemar

Sigma '59, whose wife, Martha, and parents, Mr. and Mrs. Melvin Waldemar, live on Route 1, Culver, Ore., completed the ten-week officer basic course Dec. 11 at the Army Signal School, Fort Monmouth, N. J.

Lieutenant Waldemar received instruction in leadership, small unit tactics, staff and command procedures and communications methods.

The 22-year-old officer is a 1955 graduate of Culver High School and a 1959 graduate of Oregon State College in Corvallis.

A. N. Whitlock

Eta '33, now Plant Manager of Caterpillar Tractor's new Aurora Illinois showplace construction plant. For Aurora management and employees the opening of the plant last September marked the end of two years of site preparation and construction. It sprawls on a 352 acre site and encloses 1¼ million square feet of production facilities.

Robert G. Wright

Theta '54, writes the following for publication: "As a quick sketch to bring you, and whoever else may be interested, up to date, I graduated from Purdue in 1954. Had a scholarship for my MA in history at the State University of Iowa. Received the MA in August of 1955. Was drafted into the Army in January of 1956 and spent the majority of the two years stationed in the Pentagon as an Intelligence Analyst. After getting out of service in January, 1958, took a job

with the Legislative Reference Service in the Library of Congress. Wrote speeches, etc., for Congressmen in the field of American Foreign Policy. Left in September of this year when I obtained a Teaching Fellowship at George Washington University here in D.C. Am now teaching and working on the Ph.D. in the field of American

(Continued on page 28)



ORRIN JUDD

(Continued from page 12)

to United States Circuit Judge Learned Hand, where he stayed for a year until the opportunity of entering the law firm of Davies, Auerbach and Cornell occurred. By 1934 he became a partner. In 1936 Brother Judd married Miss Persis Dolloff of Arlington, Massachusetts. Four children bless that marriage, two boys and two girls. Pi, 22 is married; Orrin D., 20 is finishing Tufts and ready to enter theological school; Betsy, 17, is attending the University of New Hampshire; and John, 12, is in 7th grade.

In 1943, Orrin was appointed Solicitor General of New York State during Governor Dewey's administration, where he served until 1946, resigning to form a new law partnership. Religious, political, scholastic and fraternal affairs have claimed much of Brother Judd's energies. He has been National Treasurer of K.D.R.; since 1952 he has been chairman of the Bequests Committee of the Colgate Development Council. He is chair-

man of the Law Committee of the American Baptist Convention, a member of the Board of the National Conference of Christians and Jews and Chairman of the Board of the Protestant Council of the City of New York. He was also a member of the Board of Higher Education of New York City in Mayor LaGuardia's administration, and is active in many civic organizations.

On August 20th, 1959, Governor Rockefeller appointed Brother Judd chairman of a three-man advisory council to help administer the state's new anti-rackets law. This law which went into effect July 1st, 1959 requires union and management to file annual financial reports with the state. It forbids financial conflicts of interest for leaders and sets forth a code of ethics in labor-management relations. This challenging position is only the latest accolade of Brother Judd's long career in legal and public life. All of us in Kappa Delta Rho wish him well . . . with greater honors to come in the future.

BE NOT AFRAID

Be not afraid, comes the Word of Love,

In tender Voice from the throne above;

Be not afraid, nor be dismayed,

If all of my laws are obeyed;

I will guide your effort every day,

I will guard your footsteps all the way.

Be not afraid, is the word of God,

By faith my path can always be trod;

Be strong of heart nor yield to fear,

Remember I am always near:

I will guide your life amidst the storm,

I will guard your days from evil's harm.

Be not afraid wherever you go,

You can walk with me and fear no foe;

Be strong of faith and march ahead,

Be always by your Captain led:

I will guide you on with holy light,

I will guard your path both day and night.

REV. CARLOS GREENLEAF FULLER

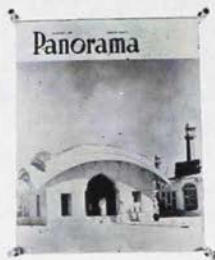
Delta '20

Pages from History

On the evening of August 14, 1959, Bob Walker was roused by a frantic stranger who insisted on using the telephone. Bob led the fellow into a nearby room and casually listened as the stranger called the Fire Department. It seemed as if a fraternity was on fire . . . or something similar . . . the number of the place was 306. Bob awoke fast enough. He was in 312 . . . and 306 was right next door. Smoke was pouring from the windows, and above the portico, flames were licking the outer wall. Damage eventually was estimated at over \$60,000 . . . the inside of the older portion of the building was completely gutted and a newer addition was extensively damaged.

A story without a point? Hardly. Bob Walker is a brother at Beta Chapter, 312 Highland Road, Ithaca, N. Y. 306 Highland Road is the Tau Epsilon Phi house. Previous to World War II, Beta chapter resided at 306 Highland Road. Another page in the history of Kappa Delta Rho.

MORE ABOUT



"International Incident"

Brother Neuberg sends the following information about himself to lend background to the *Panorama* article in this issue which was first printed in the Pakistan magazine. He was formerly Dean of Fraternity Men at the University of Illinois, 1954-58. Previous to the Dacca assignment, Howard was stationed in Saigon, Vietnam, as Public Affairs Trainee. He leaves Dacca this coming July for a home leave with coming assignment yet unknown. Present duties for brother Neuberg concern supervision of the six United States Information Service Branch Centers in East Pakistan. The centers, staffed by Pakistanis, are official outposts for the United States Govern-

ment in its attempt to portray American policies, history, culture and aspirations. *Panorama* is an outgrowth of this attempt. The magazine's 65,000 copies in two languages, English and Urdu, are distributed throughout Pakistan's East and West portions.

LAMBDA'S NEW HOUSE

(Continued from page 11)

built forms and poured a cement slab. Plasterboard was thrown up over bare studs, and a coat of black paint was sprayed over the works. Benches with cushions were built in to add the finishing touches. All this in less than two days.

The new house is a three-story affair with a lot of space and comfort not offered by the old house. Many of the rooms have a splendid view of San Francisco, San Francisco Bay, the Golden Gate and Bay bridges and the Berkeley hills.

But best of all, the house has absorbed enough of the KDR spirit to make it feel like home.

Why Not . . .

. . . do something about advertising? One of the innovations mentioned in the second issue of our new format was that of increased advertising. Rate cards were printed and an advertising committee appointed. The rates decided upon go into effect with the current issue. More advertising in *The Quill and Scroll* will eventually provide us with a bigger and better magazine that will help sustain active and alumni interest.

Now comes the job of securing advertisers . . . something a little more difficult than it may seem. An advertiser must be convinced of the merit of using each publication he considers. We can claim an illustrious alumni group . . . over 7,500 circulation . . . and a group of eager-to-read-each-issue guys. We can offer at least one

two-color page twice a year, and varying sizes within the book each issue. Perhaps this is not much compared to publications such as *Life* and *Look* . . . but neither are our rates (determined by comparative research into magazines of similar circulation). Besides, the thousands of dollars spent on mass media often reach many more than the true prospect — while the special-purpose magazine can reach a pin-pointed audience. We can offer bargain-rate insertions to discerning companies and corporations willing to invest just a little to reach a selective group.

Alumni can help by bringing this matter to the attention of the advertising department in their place of employment. Why Not . . . speak to your advertising manager NOW? Rate cards are available upon request. A brief note to the Editor about your particular situation will bring full details.

Change of Address Form

If you have changed your address recently clip off this form and mail to:

Kappa Delta Rho Fraternity
P.O. Box 36, West Hempstead, N. Y.



NEW ADDRESS:

Name Chapter

Address

City Zone State

OLD ADDRESS:

Street

City Zone State

CHAPTER CHATTER

(Continued from page 19)

and fresh flowers. The hors d'oeuvres and the punch bowls were set in two 300-pound blocks of ice.

The decorations were enchanting, the orchestra was good, and everyone was having a wonderful time when time ran out and brought to a close the "Embassy Ball," 1959.

OMEGA ANTICIPATES ACTIVE FEBRUARY

After reading the last issue of "The Quill and Scroll", I decided to let everyone know what's going on at Omega Chapter. The big thing is that we are no longer Indiana State Teachers College, but Indiana State College.

Omega Chapter is certainly on the ball this semester. Our rushing has just started and the brothers are showing tremendous interest. In the month of February two oig house parties are planned. The first, on February 6th, will be a

Mardi Gras party for brothers and their dates. On February 20 is the Hernandoes Hideaway party for brothers, rushees, and their dates. We are having three or four other parties for rushees at the house. Approximately 20 percent of the freshmen are eligible for rushing. With six other fraternities on campus, competition is stiff. So as you can see, we will really have to do a lot of rushing. Our rushing period ends on February 27.

We just bought a new TV for our house. It was certainly needed, as our other one was beyond repair. Also we are proud of our mosiac plaque that is on the wall behind the bar in our basement. As soon as we have our pictures developed, I'll try and send some to Quill and Scroll. The seven pledges that we took in last semester certainly did a good job. We had our open house with the Phi Mu Sorority before Christmas, and everyone that attended raved about the work that was done, especially on the mosiac. It is a contribution

that has pleased the brothers immensely. We will be having another open house sometime in March or April.

ALUMNI

(Continued from page 24)

Studies. The final aim is full time college teaching.

I can't emphasize enough how happy I am to see Kappa Delta Rho grow and expand as a vital living force. I am virtually convinced that the fraternity system is part of the life blood of any college or university. . . . And to all of you, let me add my thanks at being proud to be a KDR."

William L. Zwerman

Beta '57, married Patricia Ann Stewart of Rochester, N. Y., Dec. 21 in Ithaca, N. Y. David Hanselman, Beta '57, was best man. Pete Martin, Beta '61, and Bruce Glenn, Beta '60, were ushers. Bill is a graduate student in sociology at Cornell, and Pat is studying for a B.A. degree at Ithaca Colege. Bill is from Ithaca, N. Y.

KAP ALUMNI and ACTIVES

Order Your Jewelry Directly from This Page

KAPPA DELTA RHO OFFICIAL BADGE PRICE LIST

REGULATIONS

Crown Set Whole Pearl Delta	\$ 15.00
Crown Set Whole Pearl Delta, Garnet Points	15.00
Crown Set Whole Pearl Delta, Ruby Points	16.50
Crown Set Whole Pearl Delta, Diamond Points	35.00
Crown Set Whole Pearl Delta, Diamond Points, Diamond in Center of Delta	40.00
Crown Set Whole Pearl Delta, Ruby Points, Diamond in Center of Delta	25.00
Crown Set Whole Pearl Delta, Ruby Points, Ruby in Center of Delta	18.50
Full Diamond Delta	85.00
Full Diamond Delta with Diamond in Center of Delta	95.00

GUARD PIN PRICES

	Single	Double
	Letter	Letter
Plain	\$ 2.75	\$ 4.25
Crown Set Pearl	7.75	14.00

COAT-OF-ARMS GUARDS

Miniature, Yellow Gold	\$ 2.75
Scarf Size, Yellow Gold	3.25

SISTER PINS

Crown Set Whole Pearl Delta, Garnet Points	\$ 11.00
Crown Set Whole Pearl Delta, Ruby Points	12.00
Crown Set Whole Pearl Delta, Ruby Points, Ruby Center of Delta ..	13.00
Crown Set Diamond Delta	60.00
Crown Set Diamond Delta Diamond Center	70.00
Chased Kappa and Rho, Regulation Badge	\$1.50 extra
Sister Pin	1.00 extra
White Gold Badges	\$ 3.00 additional
Platinum	20.00 additional
Pledge Buttons, doz.	\$ 9.00
Recognition Buttons	
Small Monogrammed Gold Filled, each	1.00
Large Monogrammed Gold Filled, each	1.50
Miniature Coat-of-arms, Gold, each.	1.00
Miniature Coat-of-arms, Silver, each	.75

Jeweled badges may be engraved at no extra charge, providing a deposit of at least one-third of total amount accompanies the order. Instructions for engraving should be clearly printed. Check all names and dates carefully.

Proper official release must accompany your order to avoid delay in delivery.

Be sure to mention the name of your Chapter when ordering a guard for your pin.

Burr, Patterson & Auld Co.

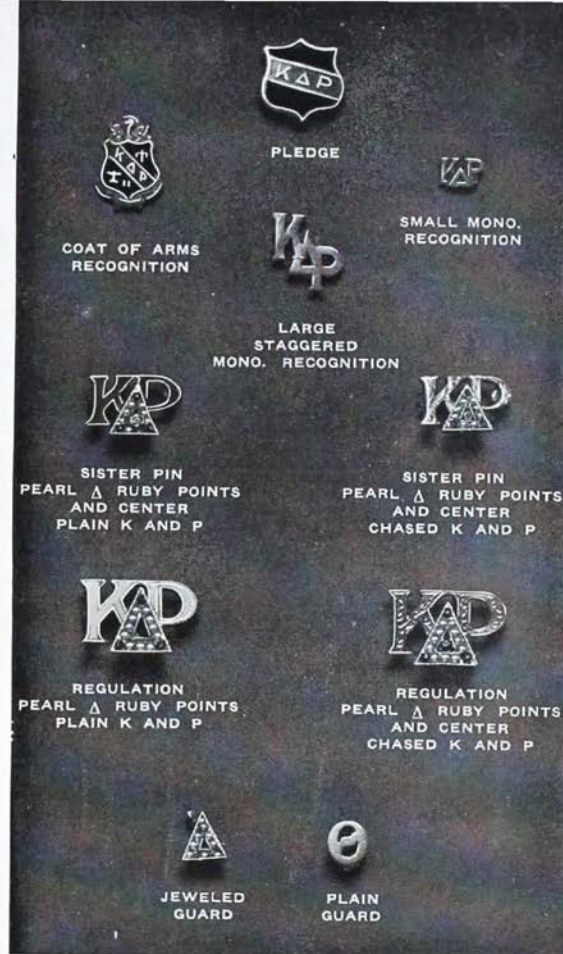
Send for Your FREE Personal Copy of "The Gift Parade"

Published Exclusively by Your Official Jewelers

ROOSEVELT PARK

DETROIT 16, MICHIGAN

America's Oldest—and Most Progressive—Fraternity Jewelers



ALL PRICES ARE SUBJECT TO 10% FEDERAL EXCISE TAX AND TO STATE SALES OR USE TAXES WHEREVER SUCH STATE TAXES ARE IN EFFECT.

Chapter Directory

Alpha—Middlebury College

Advisor—Reginald Cook
Consul—Douglas H. Phillips
Propraetor—Ralph Ellis
48 South Street
Middlebury, Vt.

Beta—Cornell University

Advisor—Curtiss Pfaff
Consul—Bruce Glenn
Propraetor—Ben Woodward
312 Highland Road
Ithaca, New York

Delta—Colgate University

Advisor—John Hoben
Consul—William White
Propraetor—William McDonald
Hamilton, New York

Epsilon—Franklin College

Advisor—Dr. Clifford Murphy
Consul—Richard Foster
Propraetor—Richard Switzer
801 E. Jefferson Street
Franklin, Indiana

Zeta—Pennsylvania State University

Advisor—Dr. George Hudson
Consul—Henry Faller
Propraetor—Albert Arnold
P. O. Box 767
State College, Pa.

Eta—University of Illinois

Consul—Arthur Bower
Propraetor—Frederick Roland
1110 S. Second Street
Champaign, Illinois

Theta—Purdue University

Advisor—Maurice Hamilton
Consul—Jon I. Fellers
Propraetor—Roger D. Lapp
1134 Northwestern Avenue
West Lafayette, Indiana

Iota—Bucknell University

Advisor—John Hale
Consul—Jack Whisler
Propraetor—Robert Hardy
College Hill
Lewisburg, Pa.

Kappa—Ohio State University

Advisor—Gordon Eldredge
Consul—Rudolf Tekavec
Propraetor—David Schwertfager
1985 Waldeck Avenue
Columbus, Ohio

Lambda—University of California

Advisor—Donald L. Edgar
Consul—Robert Carpenter
Propraetor—William Hogue
2601 Le Conte Avenue,
Berkeley, California

Nu—Indiana University

Advisor—Claude T. Rich
Consul—Weldon H. Leimer
Propraetor—Robert Luzadder
1075 North Jordan Avenue
Bloomington, Indiana

Xi—Colby College

Advisor—Ralph S. Williams
Consul—John Whittier
Propraetor—Michael Wilcox
Waterville, Maine

Pi—Gettysburg College

Advisor—Dr. C. Allen Sloat
Consul—Taylor P. Reeder, 3rd.
Propraetor—Carl W. Despreaux, Jr.
249 Carlisle Street
Gettysburg, Pa.

Rho—Lafayette College

Advisor—William S. McLean
Consul—Gerald I. Wilson
Propraetor—J. Rivers Adams
Easton, Pa.

Sigma—Oregon State College

Advisor—G. Morris Robertson
Consul—Donald Messerle
Propraetor—Gerald D. Blade
140 N. 23rd Street
Corvallis, Oregon

Psi—Lycoming College

Advisor—H. R. Otto
Consul—Kenneth McDaniel
Propraetor—Wilbur Swartwood
605 Franklin Street
Williamsport, Pa.

Omega—Indiana State College

Advisor—Robert Murray
Consul—N. Gregory Williams
Propraetor—James Stangarone
1070 Grant Street
Indiana, Pa.

Alpha Alpha—Lock Haven State Teachers College

Advisor—Franklin McIlvaine
Consul—Glenn Miller
Propraetor—Kenneth Fogleman
539 West Church St.
Lock Haven, Pa.

FLOYD R. BAUGHMAN
& BRISTOL-MYERS
630 FIFTH AVE.
NEW YORK 20 N.Y.

THE QUILL AND SCROLL

R. D. No. 1, Macungie, Penna.

Kappa Delta Rho Fraternity, P.O. Box 36, West Hempstead, N.Y.
Entered as Second Class Material at the Post Office at Easton, Penna.
Return Postage Guaranteed