

Finalists  
in the  
1959-60  
Sweetheart  
Contest



**NOVEMBER**  
**1959**

**THE QUILL AND SCROLL**

*of Kappa Delta Rho*

# National Directory

## OFFICERS AND DIRECTORS

Pres. Floyd R. Baughman (1962)  
1836 Longview Court,  
West Englewood, N. J.

Vice Pres. O. D. Roberts (1962)  
Dean of Men,  
Purdue University,  
West Lafayette, Indiana

Treas. Robert D. Corrie (1960)  
P. O. Box 36,  
West Hempstead, N. Y.

## DIRECTORS

E. Mayer Maloney (1960)  
335 South Jordan Avenue,  
Bloomington, Indiana

Merle W. Garing (1960)  
2561 Carisbrook Drive,  
Oakland, California

George E. Shaw (1960)  
Scarswold Apts., 3D,  
Garth Road,  
Scarsdale, New York

Frederic T. Closs (1962)  
402 Mansfield Street,  
Belvidere, New Jersey

John Hoben (1964)  
Hamilton, New York

Kenneth C. Kramer (1964)  
Box 851,  
State College, Pa.

O. L. Doud (1964)  
88 La Burnum Rd.  
Atherton, California

## ALTERNATE DIRECTORS

Robert D. Corrie (1960)

John Padget (1960)  
Mounted Route,  
Bettendorf, Iowa

James Hertling (1960)  
312 E. Franklin,  
Delphi, Indiana

## RITUAL COMMITTEE

John Padget  
James Hertling

## EDITOR QUILL AND SCROLL

Charles F. Beck,  
R. D. No. 1  
Macungie, Penna.

## SCHOLARSHIP ADVISER

John Hoben

## EXPANSION COMMITTEE

O. D. Roberts, Chairman  
O. L. Doud  
John Padget  
James Hertling

## LEGAL ADVISERS

Orrin G. Judd,  
655 Madison Avenue,  
New York, 21, New York

Leo T. Wolford,  
501 So. Second Street,  
Louisville 2, Kentucky

## NATIONAL HISTORIAN

George E. Shaw

## NATIONAL CHAPLAIN

The Very Reverend  
Harold F. Lemoine,  
87 Fifth Avenue,  
Garden City, New York



*Official Publication of Kappa Delta Rho*



# KAPPA DELTA RHO FRATERNITY

Founded at Middlebury in the spring of 1905 by \*George E. Kimball, Gino A. Ratti, Chester W. Walch, Irving T. Coates, \*John Beecher, Thomas H. Bartley, \*Benjamin E. Farr, \*Pierce W. Darrow, Gideon R. Norton and Roy D. Wood.

\*Deceased

## THE QUILL & SCROLL

Business office, Box 36, West Hempstead, New York.

The *Quill and Scroll* is published four times a year, in February, May, September and November.

Entered as second class matter at the Post Office at Easton, Pa.

Publication Office—535 Northampton St., Easton, Penna.

Printed by Correll Printing Company, Inc., Easton, Penna.

Subscriptions are available only to life members of the fraternity at \$10.00 each.

Notice of change of address, giving both old and new address should be forwarded at least thirty days before date of issue.

All manuscripts and correspondence submitted for publication should be addressed to the Editor, Charles F. Beck, R.D. No. 1 Macungie, Penna. Photographs should be sharp, glossy prints. Halftone cuts: 120 line screen.

**The Cover:** Miss Brenda Phillips of Colby and Miss Bonnie Replogle of Lock Haven.

Circulation this issue: 7600

*Member of the National  
Interfraternity Conference*



VOL. LXV NO. 3

NOVEMBER 1959

# THE QUILL AND SCROLL

*of Kappa Delta Rho*

REGULAR FEATURES	PAGES	SPECIAL FEATURES	PAGES
The National Sweetheart . . .	2	The Editor's Forum . . .	4
Sigma Remodeling . . .	6	Alumni Across the Nation	10
New Executive Secretary . .	8	Chapter Chatter . . . .	12
Epsilon Changing House . .	9	Chapter Eternal . . . .	15
KDR & Housing Shortage	14	Excerpts from the Mails .	20
Living Conditions: The Fraternities Failure . . .	16	Pages from History . . .	22
Nu to Host in 1960 . . .	17	Why Not? . . . . .	23
New Members of KDR . .	18		



*The Fraternity of Kappa Delta Rho*

*take pride and pleasure in announcing*

**MISS BONNIE LOU REPLOGLE**  
**of Lock Haven State Teachers College**

*has been selected as*

*the Kappa Delta Rho National Sweetheart*  
*for 1959-1960.*

Miss Brenda Phillipps of Colby College, also shown on the cover, was the next choice of a distinguished panel of judges including the following: Miss Beverly Stone, Assistant Dean of Women; Mr. Ross Smith, Chairman of Convocations and Lectures; and Mr. Stanley Shaw, Assistant to the Dean of Men and Fraternity Advisor — all of Purdue University.



**Bonnie Lou Replogle**

Vice President of Kappa Delta Rho, O. D. Roberts, Dean of Men at Purdue University took charge of the contest. All of the entries were exceptionally beautiful and worthy of the honor of being the National Sweetheart. It was unfortunate that only one could be chosen. The National would like to express its appreciation to all of the chapters who submitted entries.

Miss Bonnie Lou Replogle, our new Sweetheart, is a freshman at Lock Haven State Teachers Col-

lege. In High School she was a cheerleader, a member of the band and of the chorus. She was also on the yearbook staff and the newspaper staff. Intensely interested in sports, she is active in many of the college clubs.

During the annual Homecoming Parade, Miss Replogle represented Alpha Alpha chapter of Kappa Delta Rho and was instrumental in securing first place for Alpha Alpha among all the fraternities represented as well as first prize of all the floats in the



**Brenda Phillipps**

parade. Miss Replogle is five feet two inches tall, has brown hair and blue eyes, and weighs 110 pounds.

Runner-up Miss Brenda Phillipps is a sophomore at Colby College and an active member of Chi Omega Sorority. She also is interested in sports and singing, being a member of the cheerleading squad and a singing group, The Colbyettes. She is a member of the Angel Flight, the Homecoming planning committee and was a member in the cast of the College production of a hit Broadway musical.

## The Editor's Forum . . . .

The winds of winter will be blowing across the upper section of the nation by the time issue number three, year 1959 makes its appearance.

For your Editor the past year has been something akin to a nightmare and at the same time, full of hope for a brighter, more rewarding future. To go a little personal, January 1959 was bleak, jobless and filled with uncertainty . . . and so things remained until late Spring, when within one week, I took over the Editorship of *Quill and Scroll* and was offered a position ninety miles away from home.

The ensuing summer necessitated leaving my wife and three small children at home during the week, while I learned an entirely new position out of state. In this troubled interval, the first issue in the new format made its debut. It was composed late in the eve-

ning, in boardinghouses, in mid-summer heat. Mail came to my home address and was picked up weekends. Drawings were done on these weekends, between mowing the lawn and getting all the other leftover chores processed. Brother Jackman of Iota was most helpful in procuring the cover story, and Brothers Baughman, Shaw, Kramer and Corrie added much valuable information.

In the meanwhile, whatever spare hours were left were devoted to searching for a home in Pennsylvania. It was located in July, with occupancy in late August. The house was purchased — my New Jersey home sold — and we moved within a week of the deadline on issue number two of *The Quill and Scroll*. Much of the anxiety that attended the first issue was necessarily present through the second one.

Even this third issue is not without external problems. Our new home is a modest cape cod of post-war vintage. It requires considerable change to accommodate itself to our family. The surrounding countryside is beautiful, rolling, Pennsylvania farmland, and we are ensconced just below the ridge-line of one of the higher points in Lehigh County. Our share of the land totals a little less than an acre . . . complete with brooks, springs, old shade trees and all the rural phenomenon one could desire . . . BUT, there is much work to be done, and again the magazine has had to compete for time with lawn-mowing, Fall clean-up and the half-hundred tasks that had been undone for at least several years—plus unpacking and ac-customing ourselves to a more country-like existence than we had known previously.



But this is not an apology—these first few issues came into being at times of stress and turmoil . . . and as the new year approaches, so does the hope for a bigger and better *Quill and Scroll*. Perhaps an inkling of better things to come lies in this November issue. At the end of September, there was hope for only one article for November . . . and this did not materialize. Since then we have been able to amass sufficient material to enlarge the issue to twenty-four pages. Had one rather unusual article “come through” as hoped for, we might well have gone to thirty-two pages. Of course we cannot promise continually increasing length . . . but the hope is ever-present, and is beginning to be borne out in fact.

Brother Baughman has asked each chapter to forward material at regular intervals to the Editorial Offices . . . and once more I should

like to call for volunteers to help me keep in touch with alumni groups. If we all pitch in, the magazine can grow to even better proportions.

This issue contains several articles of particular importance to our hopes for a stronger and more active fraternity . . . principally the story on page 8 about our new Executive Secretary, Jack Widner, who should be starting his duties in early 1960. Of note, also, is the article on page 6 concerning Sigma and on page 9 concerning Epsilon . . . others in the group of vital, growing chapters who have been faced with a need for greater space. Some have solved the problem with new houses. Sigma and Epsilon had another answer, and I am certain that their correspondents will be glad to forward further information to other chapters who feel that remodeling might

spur them to similar efforts. George Shaw, National Historian, has still another comment about the housing problem on page 14.

We cannot, of course, allow the editorial to be closed without wishing our best to the new National Sweetheart. As can be seen from the photographs printed, she won over an outstanding challenger.

According to our judges, the choice was a most difficult one, and all the chapters who submitted photographs are to be commended on their excellent taste.

Miss Riplogle's selection can be construed as even more of an honor—photographs are to be commended of the other contenders.

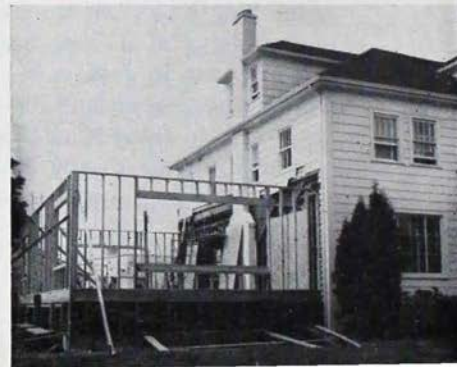
Goodbye 1959 . . . hello 1960—and as the old year passes, may we wish you the merriest of merry Christmases, and all the best that a New Year can bring, with peace, health, hope and happiness for all.



*\$60,000 Remodeling Project  
Pride of Sigma*

6

*View of Sigma with addition  
in progress May 1958.*



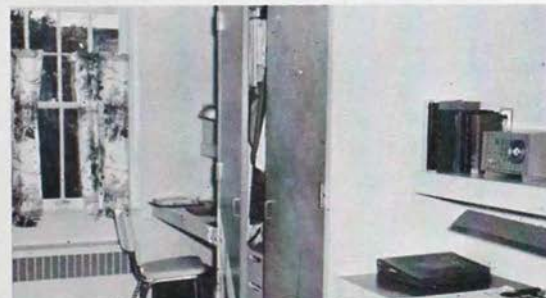


*Interior of one of the studyrooms.*



*Front view of house (above).*

*Another studyroom (below).*



Faced with the same problems confronting so many of our chapters . . . and for that matter, the entire fraternity world . . . Sigma chapter at Oregon State completed work on the exterior of a new addition during the summer of 1958. The enlarged section was designed in conformity with the architecture of the rest of the chapter house and added a space twenty-two by forty-two feet to overall dimensions . . . at a cost approximating \$60,000. On the main floor, the additional space provided a new, modern living room, and on the second floor four new study rooms eased the former crowded conditions. The basement also was partitioned off into four study rooms enabling the actives to use some of the older basement study rooms for other needed facilities.

During the process of remodeling, the entire house was considerably refurbished and improved. Several major areas in the house were expanded, including the housemother's room, kitchen and

dining room. New furnishings were secured for the living and dining rooms . . . principally donated by interested Alumni and the Mother's Club. A new wall-to-wall carpet, draperies, lamps and tables were among the larger donations helping to give the chapter house a new look. The Mother's Club also provided a cash sum with the specification that it be used in enlarging the basement party room. This task is in the process of being completed at this date . . . with the brothers all pitching in on their spare time, whenever possible.

The capacity of the fraternity house has been increased from forty-eight men to sixty men as a result of the extra room. At the start of this Fall's semester, about fifty-seven were living in the fraternity, and there are high hopes that all rooms can be filled as the year progresses. Interest in the fraternity is at a high point, and now that the addition is in "working" order, Sigma's future looks bright.

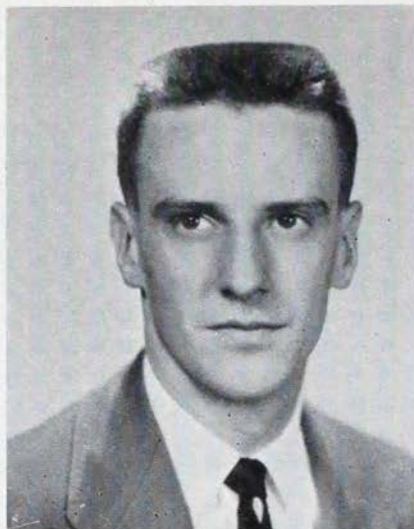
# Jack Widner, Nu '58

To Be

## New Executive Secretary

According to the latest information received from national headquarters, Jack Widner will be taking over the duties and responsibilities of Executive Secretary for Kappa Delta Rho as soon as possible after January 1st, 1960. Jack is now a Second Lieutenant at Fort Knox, Kentucky and expects to enter his new post shortly after his tour of duty has been completed.

All actives and alumni will rejoice in the selection to fill this apparent gap in executive ranks of the national fraternity. Ever since the summer of 1958, the executive committee has been searching for a man of leadership and ability of the caliber of Brother Widner. Upon his rise to the position, we will be on the road to a more active, more vital program destined to make our name a brighter one



in inter-collegiate circles. Great hopes will ride on his shoulders.

Jack was born in 1937 in Kokomo, Indiana. During his high school years his primary interests lay in music, dramatics and student leadership in the Y.M.C.A. He received a B.A. degree in 1958 in Speech and English and now holds a teaching license in both of these areas as well as in Safety Education. Graduate work has been in counselling and college personnel

administration. Summer employment continues Jack's interest in the Y.M.C.A.

During his college career, Jack has held his share of elective and honorary offices, including Blue Key national honorary fraternity for scholarship and activities; Scabard and Blade, military honorary; Sphinx Club, senior honorary; Dragonshead, honorary for presidents of major campus organizations; member of the I. U. Foundation; . . . secretary, corresponding secretary, song leader, disciplinarian and Consul of Nu chapter (at varying times during years at Indiana), Kappa Delta Rho.

We should all feel gratified that our executive committee has chosen a candidate of such obvious talents in training and dealing with young people. We wish him all the luck in the world. Be looking for the official announcement of his installment, and determining of the permanent offices of the new Executive Secretary early in the coming year.

# Epsilon Remodeling Chapter House

Kappa Delta Rho's Epsilon Chapter had a new look at the start of the 1959-60 school year. Work was started last summer toward removal of the old front porch and addition of a more attractive two story, three column, colonial porch.

This porch is now completed ... but the porch is only the start of a much more ambitious project—a forty-five foot by twenty-five foot addition. Tentative plans have been made for a new \$15,000 recreation center, according to Thurman DeMoss, senator and legal advisor for the chapter. The proposed new construction will include a large recreation room, television and trophy room, laundry room, basement and powder room. Fraternity members are providing funds for new furniture in the chapter, and the entire house will be remodeled and painted in the

near future. New electrical wiring, roofing and chimneys will be included in the plans.

Approximate costs will run over \$20,000 for the entire project. The cost is being held down because fraternity members are doing a great deal of the work themselves . . . including 'over-the-summer work by actives. While the actives are dedicated to the task of modernizing and enlarging their quarters, one fraternity spokesman said that the job cannot be completed without the loyal support of Epsilon's alumni.



*Editor's Note:* We always like to see the ambitious plans of courageous young men materialize . . . and from watching the stories come in across the country, almost every one of our chapters has dreams of future new or remodeled houses. A few of them have realized or are realizing their dreams. It might be most helpful to all of the groups verging on or working on similar projects to get in touch with chapters that have passed through the same paths a short time previously. There are ways of raising funds that might be applicable to those who are *about* to get their feet wet . . . that have proven useful to chapters who have *already* taken the plunge, and that can be used over and over again. We will be glad to act as "clearing house" for ideas, promotional or otherwise that have succeeded in achieving the desired goals.

---

*How the completed house will look, as visualized by one of our artists.*

# *Alumni Across the Nation*

## **Ted Bayler,**

*Eta*, '50, Reliability Coordinator at Chrysler, Missile Division, served as Chairman of the Third Annual Government-Industry Program for the Greater Detroit Section, American Society for Quality Control. Chrysler Corporation Missile Division was host to this year's meeting on the 8th of October.

Technical theme of the program was a presentation titled "Inter-service Ballistic Missile Reliability and Quality Control Data Interchange" by Mr. J. H. Draughon from the Army Ballistic Missile Agency, Huntsville, Alabama. The exchange of reliability and quality control data between Government and Industry contractors was described as increasing the reliability of Ballistic Missile Components while decreasing the overall cost of development programs. Equally important benefits are the conservation of engineering talent and

a reduction in the time required to progress from design concepts to operational use of weapon systems.

Other outstanding features included the rare privilege of an escorted tour through the Michigan Ordnance Missile Plant near Detroit and the premier showing of a movie on Missile Reliability. The film, called "The Price of a Goof", showed how one small human oversight led to the catastrophic failure of a large ballistic missile. The Detroit Ordnance District presented the film through the courtesy of the Army Ballistic Missile Agency.

The surprise appearance of Air Force Captain Leroy G. Cooper was one of the most noteworthy events of the meeting. Captain Cooper is one of the U. S. Astronauts currently training to be the first man to orbit the earth. His interest in the reliability of the

Redstone Missile is obvious. One or more of the Astronauts will be boosted into space by a Redstone Missile in part of the N.A.S.A. project Mercury. Other distinguished guests included Mr. J. French, Reliability Coordinator from the National Aeronautics and Space Administration, officers of the Army, Navy, and Air Force, and two United States Congressmen.

## **Robert Donald Corrie Married at Garden City, L. I.**

The Treasurer of the National Fraternity, Bob Corrie, married the former Miss Ann McLean Cameron, daughter of Mr. and Mrs. Edward Madison Cameron, Jr., of Garden City and Elk Lake, Penna., September 18, 1959. The ceremony took place at the Protestant Episcopal Cathedral of the Incarnation at Garden City with the Right Rev. John Henry Esquirol, Suffragan Bishop of the Diocese of Connecti-

cut officiating. The bride's sister, Mrs. Robert Benson was matron of honor and Mrs. Edward Cameron, III and Mrs. Bruce Allan Corrie, sister-in-law of the bridegroom were the other attendants. Lieutenant Bruce A. Corrie, U.S.A.F. was best man for his brother. W. Robert Stillman, '56 and John R. Padget '58, of Beta chapter were among the ushers.

Brother Corrie is also a Beta chapter alumnus. After graduation from Cornell, he graduated from the Wharton School of Finance and Commerce of the University of Pennsylvania, and is now with the Meadowbrook National Bank in Manhasset.

**Lt. Col. Arthur M. Frey,**  
*Pi '38*, announced his retirement from the Chemical Corps of the U. S. Army effective September 30, 1959. Colonel Frey began his military career immediately after graduation and was appointed Second Lieutenant, Infantry in the U. S. Army Reserve at that time. In 1939 he was called to active duty

and assigned to the 34th Infantry at Fort Meade, Maryland. In 1940 he was assigned to the Panama Canal Zone as commanding officer, Company F, 33rd Infantry where he remained until 1942. During World War II, Colonel Frey served as Assistant Chemical Officer, Headquarters Fifth Army in the Mediterranean Theatre of Operations, where he participated in the Sicily, Naples-Foggia, Anzio, Rome-Arno and North Apennines campaigns. Following the War, he attended the Command and General Staff College, Ft. Leavenworth, Kansas, and served as acting Professor of Military Science and Tactics at Greenbrier Military School, Lewisburg, West Virginia. In 1949 Colonel Frey was assigned to the European Command where he served with the 18th Infantry, as an instructor with the EUCOM Chemical School and later as Post Chemical Officer, Heidelberg Military Post. In 1952 he returned to the United States and was assigned as Commander, Ft. Belvoir CBR School. In 1953 he was assigned

as Chemical Officer, Military District of Washington. He served in this capacity until 1955 at which time he was appointed Deputy G-4. On 6 July 1956 he was assigned to Fort Ritchie, Maryland where he served as Post Chemical Officer and S-4 until his appointment as Post Executive Officer on 11 October 1957, where he served until his retirement.

### **Jerome Halsband,**

*Beta '54* has been appointed as Executive Secretary and Grand Recorder of Beta Sigma Rho Fraternity, effective October 1959. Brother Halsband can be reached (and congratulated) at his office at 527 Lexington Avenue, New York 17, N. Y.

### **Dick T. LeClere,**

son of Elmer D. LeClere, 1431 Mulberry St., Scranton, Pa., completed the officer basic course Oct. 3, 1959 at The Infantry School, Fort Benning, Ga.

*(Continued on Page 22)*

## Chapter Chatter

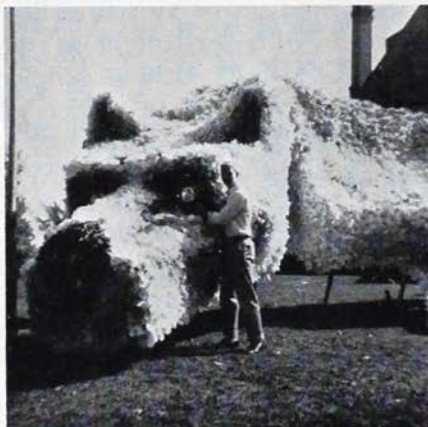
### ZETA WINS HOMECOMING DISPLAY



For the second straight year, Zeta chapter at Penn State has won the annual Homecoming lawn display. For 1959, the theme which was to be followed was "Penn State, the year 2,000—some things will never change".

Zeta's approach to the problem featured a gigantic Lion, fifty feet

long and fourteen feet high, representing the fact that the University would grow but the Lion will always remain. The lion was constructed from a plaster model scaled up at one to fifty-six. A wooden frame supported chicken wire, which in turn was stuffed with 20,000 white napkins and then spray painted. In front of the lion were two mannequins representing students of the twenty-first century



dressed in futuristic clothing; and a lamp post and bench, exact replicas of the present lamp posts and benches found about today's Penn State campus.

Our two photographs show the monster-lion in front of the Kappa Delta Rho house and a close-up of the head with the lion's creator, Hank Faller, Consul at Zeta. The actives are trying to figure out some way of getting Hank back in 1960 to design another "stopper" and continue the chapter's winning ways.

### XI FALL REPORT

Forty-four brothers returned to Xi chapter this September — and inasmuch as they had no "house" as such, proceeded to get their lounge furniture settled and their TV room arranged. Brothers Brackett, Davis, Henderson, Kudriavetz, Poland, Riis, Shattock, Teel and Whittier returned early to act

as student advisors for the freshmen. The College had picked these men to guide the freshmen and aid them in establishing proper working habits and attitudes toward college life.



*Scene from the Roaring Twenties party.*

Four Xi members, Clark, Coombs, Janes and Whitehead played on Colby's undefeated soccer team . . . (34 wins over a five year period). Brother Brackett heads the largest campus organization, the Colby Outing Club, and

top man of one of the five councils within the club is Brother Savage. Brother Poland is in charge of the "Colby 8", renowned college singing group. Three other members are K.D.R's.

Brother Kudriavetz is Group Commander with rank of Lt. Colonel in the advanced Air Force R.O.T.C. His Executive Officer is Brother Whittier, and his inspector is Brother Henderson. Three other Xi brothers are among the Cadet Lieutenants and Flight Commanders.

Among the cheerleaders for the Colby football games this year are Brothers Coombs, Craigin, Lockhart, Shackford, and Shattuck. This group is headed by Bob Shattuck.

Among many other active Brothers are Carl Stieler and Buck Barclay who are President and Vice-President respectively of the Colby College Marching Band.

To return to the activities of the house: The rush period started on October 3 and ended on October 17. Xi Chapter secured sev-



enteen pledges. Those from the Massachusetts area are Robert Haskell, Winchester; Doug Johnston, Westford; Barry Wallace, Norwell; Lew Welch, Milton; Stu Hardy, Braintree; Mal Eaton, Waban; and Lawrie Barr, Andover. The pledges from Connecticut include Paul Rogers, New Britain; Tom Curtis; Middlebury; Buz Bedford, New Canaan; and both Dave Reeves and Ken Robbins come from Old

*(Continued on Page 21)*

# *KDR and the Housing Situation in the Year 1959*

by George E. Shaw, Alpha 1910

*Editorial Note: The following is a comment by our National Historian, on the critical housing problem—so real for many of our chapters and common throughout all fraternity-land.*

October, 1959

Certain facts seem to be fairly well established:

1, The building cost of providing living accommodations for college students whether in a college dormitory or in a chapter house is between \$4,000. and \$5,000. per man.

2, With the exception of Indiana and Vermont where limited exemption is provided, it is believed that chapter houses of fraternities are generally subject to local real estate taxation whereas college property is exempt. College com-

munities, due to the large amount of exempt college property, of necessity have high taxes to provide community schools and other needs. Further exemption of fraternity property is therefore most unlikely.

3, Under present Federal law, educational institutions can borrow from the Federal Government for income producing buildings that are self liquidating in 40 years. The interest rate has been as low as  $2\frac{1}{2}\%$  per annum and is now believed to be  $3\frac{1}{8}\%$ . This will probably be higher.

4, Chapter houses unless built, owned and leased by the college under #3 above, are generally financed locally by a 6% mortgage running for 15 or 20 years with heavy amortization. From a consideration of #3 and #4, it is a reasonable estimate that rooming facilities in a chapter house will cost from \$150. to \$200. more per annum per man than in a dormi-

tory. Substantial savings should also be possible in a large dining hall as compared with a chapter house serving a smaller group.

5, In the early years of this century, most fraternity chapters had meeting rooms but no houses. As the colleges expanded in size and needed more dormitory accommodations chapters were encouraged to provide housing for their members.

6, Likewise in that early period, chapters were smaller, 20 to 30 being considered a good size. There was no pressure to take in men to support a house.

7, It is evident that the problems arising in the management and control of a group of 25 undergraduates without a house are less than when there are 75 to 100 men housed in perhaps a \$250,000. mansion that has to be maintained, financed and living facilities provided either by the undergraduates themselves or by alumni with vary-

ing degrees of interest, control and authority.

8, In many National Fraternities I believe it will be found that today the policies of the institutions where their chapters are located will show a surprising difference in their views on chapter housing. In many where dormitories are adequate, students are required to live for a substantial part of their college life in dorms. In others with limited dormitory space, and an increasing number of students, chapters will not be allowed on campus without a house.

*Conclusions:* Various conclusions might be drawn from the above premises.

It would appear that unless a Chapter House is already paid for, has tax exempt status, or is blessed with many wealthy and generous alumni, it cannot compete on a cost basis with the college dormitory or the college owned and leased house.

My personal feeling is that the primary purpose of a fraternity chapter is to promote brotherhood, honor and scholastic training in its members. It is not to provide training in hotel management.

I for one would welcome a return to more fraternities with smaller chapters, with private meeting rooms, with less emphasis on chapter housing and more emphasis on other aspects of fraternity life.

---

---

## Chapter Eternal

---

---

*Editorial Note: The September issue of Quill and Scroll carried the name of Brother L. B. Chalfant in this column. We are happy to say that our source of information erred, and that Brother Chalfant is alive and well . . . living at 2234 Ewing St., Evanston, Ill.*

### Irving V. Brunstrom Delta '30

Assistant general counsel of the American Life Convention, known throughout the industry as "Steve",

died at his home in Palatine, Illinois, on June 15 following a heart attack. He was 52 years old.

Born in McPherson, Kansas, in 1907, the son of Reverend David W. and Catherine Brunstrom, Steve was a graduate of Colgate University and took his law degree at Northwestern University. Admitted to the Illinois Bar in 1935, he was engaged by William O. Douglas, now Justice of the United States Supreme Court, to work with the SEC on a study of corporate reorganizations. He later worked for the Federal Communications Commission.

Brother Brunstrom joined ALC as an attorney in 1942, being named assistant general counsel in 1952. Although he objected to being classified as a "tax expert", he did important work in the field of taxation, Federal, State and local.

Steve Brunstrom was a member of the Chicago and American Bar Associations, the ALC Legal Sec-

*(Continued on Page 22)*

## *Living Conditions, the Fraternities Failure*

Excerpts from an article in the  
*Colgate Maroon* Wed. Sept. 30,  
1959.

"Setting aside for the moment such nebulous considerations as "brotherhood" and "social acceptance", the most important contribution of fraternities to the student on campus should be in providing him with beneficial study and living conditions within a healthy environment of group living. Unfortunately, this is the very field in which most of the fraternities seem to have fallen down."

Several surveys at Colgate brought out the need for a clearly-defined housing code to which all living units could voluntarily subscribe and adhere. A proposed set of standards, which was modified after consultation with the I.F.C. last spring, is scheduled for review by the Alumni I.F.C. this fall with the final proposal to be reviewed again by the student I.F.C. before

adoption by the Administration. The implementation of any such concrete code remains a matter of student responsibility.

"No less than half of the fraternities are found to be overcrowded in light of available living and study facilities. It is our hope that the houses, in conjunction with their alumni corporations, will set maximum - residence quotas for brothers actually living in the particular house. This provision should allow sufficient time for adjustments—the "code" should be a standard to work toward and not an unrealistic dictate for immediate action.

In general, the fraternities display a continuing problem of maintenance, in that desirable standards are not being maintained in living and study conditions. Moreover, most exhibit general uncleanness and untidiness. Rooms, study rooms in particular, are often cluttered and slovenly.

Mostly, these are attributable to slipshod handling of maintenance and cleaning jobs and a lack of enforced routine in these areas. These must be tightened.

A fraternity, furthermore, should guarantee a man his privacy when he desires it. He should have available to him a place in which to work uninterruptedly—for long and soul-searching hours if necessary. "Togetherness" is wonderful—up to a point. Privacy—a chance to be alone to concentrate or think—however, is essential to a maturing student and man. This should be provided within the confines of "group living". Strictly enforced "quiet hours" are only a step in this direction.

Finally, there is the question of the exterior view of the fraternity — often the view the community as a whole has of a particular house. To clean up,

inside and out, for special occasions is not enough.

Please note—we have not talked of the important safety factors, which should be well-understood.

As of now, the University has proposed no sanctions for failure to live up to any proposed housing code. And there is no need that it should have to. It is the ideal province of student responsibility, because students are the ones most affected. To be purely mercenary—it is all gravy to have summer “caretakers” who also pay rent to the fraternity. But they cannot be expected to do so if they are to be as little-satisfied as they were this past summer.

The real challenge goes far deeper, however. It is to every member of every fraternity. Group living is extremely valuable—but only if the group exercises strict self-discipline informed by self-pride. A fraternity should give us the feeling that this is our home — and should reflect our pride in it.

Take a good look around you.”

## *Nu to Host 1960 Convention*

The National Board of Directors voted unanimously, during the off-year Convention in August, to accept Nu Chapter's invitation to hold the 1960 National Convention at Indiana University. Plans are now underway at Indiana, and an eight-page report has been drawn up outlining the duties of each of six committees being formed with the express purpose of making the 1960 convention a complete success. Chairmen for the committees are now being selected, and it is hoped that all working units will be completely staffed by the end of November. The National Vice-President, O. D. Roberts, and alternate director James Hertling, plan to visit with Nu Chapter during the first part of November to discuss plans for the Convention.

National Conventions, like good bourbon, improve with age, thus,

the conclave at Nu Chapter should be the finest KDR National Convention to date. It is strongly desired that this gathering set a standard for future conventions.

Special attention is being devoted to planning of the Officers Training Session portion of the Convention. It is anticipated that at least a half-a-day will be set aside for this session. It is also hoped that a half-a-day may be set aside for individual conferences with National Officers and National Board members for purposes of discussing specific problems of individual chapters.

James Hertling, Convention Chairman, would appreciate hearing any comments or suggestions as to how we can make this Convention the finest to date. He can be reached by writing to him at 312 East Franklin, Delphi, Indiana.

# New Members of KDR

The following listing of new members of our fraternity indicates that these initiates have been processed through the National's office during the period July first, 1958 to June thirtieth 1959. This does not necessarily mean that these men were initiated during this time period. Various of our chapters have been slow in delivering the forms to the national office thereby causing this delay. It would be most helpful to all concerned if forms are forwarded to Kappa Delta Rho, Inc., P.O. Box 36, West Hempstead, N. Y. as soon as possible after initiations.

## ALPHA

Wayne Seymour Bailey  
Ralph Ward Ellis  
William Russell Epler, Jr.  
Harold V. Fergus  
James Brown Godfrey, Jr.  
Jackson Hathaway Hooper  
Peter Goodrich Hoyt  
Leonard Les Kaufman  
Douglas Hight Kirkwood  
Richard David Krasher  
Michael Edward Magus

Daniel Frederick Miner  
Edmund Daniel Moritz  
Kendall Stiles Myers  
Jon David Noel  
Thomas Sargent Paine  
Daniel Kenneth Silver  
Arthur Murray Wood

## BETA

Franklin Dorman Carson  
Donald Owen Conniff  
Roger Lowell Dewey  
Michael Preston Earnest  
Richard Woodman Ely  
Evan Egbert Freund  
Philip Richard Goodrich  
Robert Harold Jaycox  
Norman Hutchins Lacy  
David Walter Lloyd  
Steven Bruce Metz  
Robert Henry Petersen, Jr.  
William Bruce Shepherd  
Lai Sing Yeoh

## DELTA

Stephen Robert Baker  
Ronald George Blasberg  
Charles Peter Driscoll  
Bruce Albert Etting  
Edwin August Finche  
Daniel Malcom Fones  
Jay David Gaines  
Robert Keith Gray  
James Spencer Hine

Paul Bosworth Ingrey  
Ross Burling Jackson  
Peter Ronald Liebschintz  
Robert Mitchel MacQueen  
William Ernest  
McDonald, Jr.  
Michael Harrington Millard  
Wayne Dean Monteau  
Frank Lorenz Morris  
Anis Kahn Salti  
LeRoy Henry Steckler, Jr.  
Richard Arnold Stein  
Glenn Arthur Tryon  
Edward John Wilbur  
Howard Drake Williams  
Michael Jay Wolk

## EPSILON

Leonard Otto Ptaech  
Richard Louis Switzer

## ZETA

Albert Joseph Arnold, Jr.  
Frederick Charles  
Baldock, Jr.  
Alan Everett Bayer  
Robert Andrew Brumbaugh  
John Chatley III  
Thomas Frederick Crusco  
David Andrews Dambly  
Paul Hering  
Wells Elton Hunt, Jr.  
Glenn Everett Jones  
Frank Richard Korbin  
John Joseph McCarron

Ronald Anthony Maturi  
Joseph Edward Peters, Jr.  
Michael Myers Richards  
Charles James Weyandt  
Harlan Earl Williams

## ETA

Robert Gerald Arbogast  
Patrick Raymond Murphy  
Frederick Albert Nicoll  
Gary Lynn Post  
Larry Alan Thomas  
Chalfont Williams

## THETA

Ronald Joe Deaton  
Philip Edward Harms  
Fred David Hawker  
Sam Wright Heltzel  
Gary Alan Julian  
James Berle Kessler  
William Albert Kinsley  
Roger Davis Lapp  
William Floyd Marks  
Robert John Planisch  
Tony Joe Schmeltz  
William David Shupe  
William Stielstra

## IOTA

Richard Charles Barberie  
Thomas Frank Bauer  
Laurence Coates Beaker  
Paul Louis Chabot

Donald Frank Clostermann  
 Larry Lee Erdley  
 George Irwin Feinsod  
 Robert Charles Hardy  
 Sigfrid Werner Hauck  
 Edward Jerome Kauffman  
 James Anthony Kellogg  
 Kenneth William Lachie  
 James Edwin Lott  
 Richard Charles Piel  
 Jean Paul Plumez  
 George Alfred Reish  
 Steven Alden Smith  
 Richard Gary Wilderman  
 John Joseph Zygiel, Jr.

# KAPPA

Edward Michael Helal

# LAMBDA

Thomas Wescott Bridges  
 Robert Wayne Carpenter  
 Michael William Davis  
 John Malcolm Elgar  
 Dean Marvin Fenley  
 Paul Dyrsen Grien, Jr.  
 Peter Herbert Justin  
 Robert Roy Kirby  
 Walter Edward Nellis  
 Gerald Earl Peabody  
 Byron Kent Wood

# NU

David Edward Arch  
 Richard Eric Bishop  
 William Maxwell Goodwin

Robert Dake Green  
 Philip Stanley Hilligoss  
 Robert Warren Luzadoler  
 Richard Augustus Meyer  
 Robert Jay Musselman  
 Robert Eugene Poynter  
 Darwin Marcel Short  
 Richard Stephen Wilson

# XI

Gerald Franklin Gould, Jr.  
 Hugo Carl Stiehler  
 Carl Theodore  
 Tiedemann II  
 John Paul Whitehead, Jr.  
 Michael Wilcox

# PI

Thomas Harold Burke  
 Wayne Caldwell Chalmers  
 Carl Whitney Despreaux, Jr.  
 Robert Preston Doerschner  
 Frank William Hamilton  
 Robert Werner Hirning  
 Henry Johnson Miller, Jr.  
 Randolph Gray Richardson  
 Larry Brian Study  
 Jere Lee Towson  
 John Maurice Weirert  
 Edward Roland Wright

# RHO

James Rivers Adams  
 Neal Emerson Dyer, Jr.  
 Robert John Fox  
 Donald Langley Fuller

John Andrew Harobin  
 David Eby Landis  
 William Albert Mangels  
 Charles Richard Solomon  
 Paul Sheldon Spiecher  
 Frank James Walnista

# SIGMA

Jerry Lamont Boesel  
 Thomas Danforth Burnett  
 Gordon Lane Bursell  
 Melvin Lester Cooper  
 Jack Harold Davis  
 John Everett Hansen  
 Charles William Merrill  
 Kenneth Collver Messerole  
 Fred Martin Schwan  
 Clarence Paul Yundt III

# PSI

Victor Albert Bertillotti  
 David Mead Bliley  
 John Alexander Bowers  
 Edward Everett Cunningham  
 Robert Donald Foor  
 William August Habermann  
 Luke Harold Kauffman  
 Ralph A. Nardi, Jr.  
 Ronald Gary Sharp  
 John Richard Sneden  
 Albert Johnson Stevens III  
 Robert Louis Stevens  
 Wilbur Burton Swartwood  
 Robert Coquelin Wilson

# ALPHA ALPHA

Anthony John Beracqua

Fred Carl Colteryahn  
 James Hunt Covey  
 Gary Arthur Dearborn  
 James Arthur Elmer  
 Regis Eugene Endler  
 Kenneth Charles Fogelman  
 Charles Sheller Frank, Jr.  
 Anthony Geno  
 Frank Dominic Geno  
 Charles Richard Graham  
 Harry Roger Grigsby  
 Robert Edward Grissinger  
 Michael Albert Hoza  
 Evan Vinson Jones  
 David Peter Keppler  
 John Edward Korch  
 Eugene Les McCann  
 Michael Mezach III  
 Glenn Grant Miller  
 Laurence Roger Moran  
 Arlan Richard Neill  
 William Sinclair Reid, Jr.  
 John Caldwell Schroyer  
 Robert Charles Sherock  
 Harold Kenneth Spickler  
 Glenn H. Stephens, Jr.  
 Dwight Charles Stone  
 Stephen Eliot Stone  
 George Herman Stoll  
 Philip Raymond Swish III  
 Robert Allen Thomas  
 Joseph Victor Vesnesky  
 Verne Allan Wallace  
 Leon Roy Westlake  
 James Orval Wetzel  
 Robert Stanley Williams  
 Alex Andy Zbur

## Excerpts from the Mails

### Xi Plans Regular Report

Dear Brother Beck:

You requested in September that the chapters send you reports of their activities. We have finally gotten around to completing our report, and you will find it enclosed.

We hope that you will feel free to abridge it or make any corrections that you feel are necessary. Would you like a report for every edition of "The Quill and Scroll", and, if so, when would you like these articles submitted?

We are looking forward to assisting you in your new capacity, and wish you every success as our new Editor of "The Quill and Scroll".

Fraternally,  
John Whittier  
Consul  
Michael Wilcox  
Propraetor

*This is substantially the type of letter we would like to see every chapter send us . . . as per the plea on the opposite page. For everyone's information . . . material for QUILL AND SCROLL should be sent at least one month previous to date of issue. i.e. All February material should be in our hands during January.*

### Zeta Sees More Interest

Dear Brother Beck:

I would like to comment that in going through the Consul's files I have not seen much correspondence with the National. Since my term began last spring I have filed more letters than were in the file. We are in the process of revamping our internal structure but it is not due to this, it is because we have been receiving more correspondence from everyone concerned with the National. And it is a good feeling to know what people

are doing and how they are doing it.

Fraternally  
Henry Faller  
Consul, Zeta '60

---

*Interest IS reviving . . . and the National IS becoming more active all the time. Let's all try to keep up the good work and make this fraternity best of all!*

*(Ed. Note—I've forwarded the other matters mentioned in your letter to the proper authorities).*

---

### Plea For More Prominent Alumni Stories

Dear Brother Beck:

To the alumnus, KDR is people . . . not chapter house parties or athletics or sweethearts. Few of these have a place in an effective and conservative publication. Your first issue was remarkably keen in this sense. Why don't we FEA-

TURE in each issue a prominent alumnus . . . a man of national reputation (we are loaded with them) whose story will kindle pride in the alumnus and pride and help for the undergraduate.

As ever

Ferd B. Ensinger

Alpha—former

Executive Secretary

*I disagree a little, Ferd . . . There should be space for both active and alumni interests. Of particular interest to you should be the fact that we are on the verge of a regular featured article similar to that mentioned. Delays have caused us to cancel it for this issue, but February should include the second in this new series.*

## CHAPTER CHATTER

(Continued from Page 13)

Greenwich. The remaining pledges include: Rollo Grant, New York, N. Y.; Charlie Lehman, Wil-liamsport, Penn.; Dan Politica, Tenafly, New Jersey; Jimmy Johnson, Nicoscia, Cyprus; and Frank Kirby, London, England.

House social activities have been very successful centering around Saturday football games. We have had receptions and dancing in the house after each game, and a dance in the evening. Social activities were climaxed by our Homecoming weekend on October 30 and 31. On Saturday noon we had a buffet for returning alumni and Brothers plus their dates or wives. That evening we all met downtown at the Crescent Hotel for a banquet in honor of our Homecoming Queen candidate. At this time we presented each date with a favor in memory of the weekend. After the dinner we headed back to the house to enjoy a roaring twenties party where the ticket of admission was appropriate attire. Our TV room was converted into the roaring twenties atmosphere by the addition of a mural depicting that era. That weekend was especially significant to us in another way. Xi Chapter's display of a replica of a 1929 Model "A" made out of crepe paper won the house decoration competition

among the ten fraternities. We also won another competition on Saturday morning between the fraternities. That event was the annual bicycle race around Johnson Pond. Brother Brackett came up from 4th place in the last lap to win.

The following weekend the annual Woodsmen's Meet was held, being postponed from Homecoming weekend due to inclement weather. This is once again a competition between the ten fraternities at such tasks as speed chopping, pulp tossing, wood splitting, log rolling, and a two man canoe solemn race. Each fraternity entered a team of six men to compete in all five events. The KDR team came out on top in very close competition winning by only one point.

## CORRECTION

J. Calvin Affleck, *Alpha '31*, was omitted by mistake from the September Loyalty Fund listing.

## Pages from History

A landmark of interest perhaps to only the brothers of Pi Chapter has finally disappeared. The old K.D.R. house which stood for many years next to a vacant lot . . . where the college dining hall now stands . . . was sold for \$250 and demolition.

During the summer of 1959 a wrecking crew slowly mangled the old house that rang to so many K.D.R. festivities in the past. Brick by brick, and truckload by truckload, the old house levelled until now nothing remains but a gaping hole in the ground. According to latest rumor, a parking lot . . . of all things . . . will replace it. And one more building familiar to the men of Gettysburg is no more.

The fraternity is not completely out in the cold, however, as they have taken over their new home . . . formerly Buehler Hall . . . situated on Carlisle Street.

And so turns another page in the history of Kappa Delta Rho.

## Chapter Eternal

*(Continued from Page 15)*

tion, the Association of Life Insurance Counsel, and the Lions Club of Palatine.

He is survived by his wife, Ella, and one sister, Mrs. Eldon Guthrie of North Canton, Ohio.

Funeral services were conducted from the Lauterberg & Oehler Funeral Home in Arlington Heights, Illinois, with burial following at Memorial Park in Skokie.

**Ernest H. Daubert      Zeta '28**

Died September 25, 1958.

**Dr. Edward J. Filbey      Eta Hon.**

Passed away suddenly, while shovelling snow, March 10, 1959.

**Donald A. Miller      Epsilon '24**

208 W. Washington St., Chicago, Ill.

*(continued on page twenty-four)*

## ALUMNI

*(Continued from Page 11)*

Instituted for officers who have not served with troops, the ten-week course is designed to familiarize each new officer with the duties and responsibilities of an infantry unit commander.

A 1953 graduate of Central High School in Scranton and a 1959 graduate of the U. S. Military Academy at West Point, N. Y., Lieutenant LeClere will shortly receive permanent assignment.

---

**Abbot E. Rice**

Xi, received his Masters Degree in Education upon graduation from the Boston University School of Education in August 1959.

Shortly after graduation, Brother Rice married Miss Annie Kempton of Northfield, Vermont (August 29, 1959).

Brother Rice has taken a position teaching business subjects at the Duxbury High School, Duxbury, Mass.

## Why Not . . .

. . . support your national magazine whenever and wherever possible? The *Quill and Scroll* is going to be a better magazine as more and more alumni realize that only through support of the publication and the National will the fraternity grow.

Support, in this sense of the word, does not necessarily mean financial sacrifice. This publication must obtain its "meat" from three sources: the active chapters, National Headquarters and Alumni. Neither one can do it all. Our National has been cooperating in a thoroughly satisfactory manner in securing news. Individual chapters, when contacted, have turned in a spotty but better than adequate flow of news. The overall alumni body is the laggard, to date.

Starting with this issue, we should like to follow-up a letter addressed to all active chapters by our President asking for at least one page of news for the *Quill and Scroll*. Our magazine is printed four times

a year — and four times a year each chapter should find at least one item of interest to the fraternity-at-large. We ask each chapter to send us four pages per year . . . as a minimum standard.

And getting around to the lagging Alumni, would it be too much to ask 7,000-plus men of K.D.R. to send us at least four pages per issue? With the continued active support of our National, this degree of volume would permit a much more interesting magazine.

So, all you guys out there—why not drop us a line. It can be about other alumni who have made a name for themselves . . . it can be a short story . . . a poem . . . or simply a "sound-off" for or against anything of interest. But, take an hour and set it down on paper. The Editor would certainly appreciate it, but beyond him, the entire fraternity will benefit and you too will feel that you have more of a part in this fine group of brothers.

## Change of Address Form

If you have changed your address recently clip off this form and mail to:

Kappa Delta Rho Fraternity  
P.O. Box 36, West Hempstead, N. Y.

### NEW ADDRESS:

Name ..... Chapter .....

Address .....

City ..... Zone ..... State .....

### OLD ADDRESS:

Street .....

City ..... Zone ..... State .....



Kappa Delta Rho Fraternity

P. O. Box 36, West Hempstead, N. Y.

# Loyalty Fund Drive

I certainly do not want to be left out of the good things that are happening to Kappa Delta Rho.

Please add my name to the growing list of contributors for the 1959-1960 Fund.

Name .....  
Street .....  
City ..... Zone .....  
State ..... Chapter .....  
Amount of Contribution .....  
Clip and Mail to: .....

Be certain your check or Money Order is enclosed before mailing.

## Chapter Eternal

(Continued from Page 22)

**Dr. Charles A. Nicholas Rho '31**

Died November 4, 1958

**Dr. Kent Pease      Gamma '27**

Box 81, Macomb, Illinois, died  
December 28, 1958.

**Homer M. Sanders      Iota '16**

22790 Hadden Rd., Euclid 17,  
Ohio passed away November 15,  
1958.

**William J. Weslow      Theta '42**

1420 Betty Lane, Elyria, Ohio  
drowned while on his vacation in  
July, 1959.

## NOTICE

The September issue of *The Quill and Scroll* had at least 268 issues returned to the Editor for lack of sufficient address, or failure to notify the publication of change of address. If you have been among those—or if you know of members who have been among those—not receiving the magazine, please do one of the following:

1. Notify us of your or their address change immediately.
2. Notify your old post office of your desire to have second class mail forwarded.
3. Check with your old post

office to see whether your forwarding address is being listed . . . or whether the time limit has lapsed.

The *Quill and Scroll* is printed and mailed under a second class permit. This means that your magazine will NOT be forwarded to you upon change of address left with your postmaster, but will be returned to this office . . . UNLESS you notify us before you move. Please use the form on page 21 to be sure you continue to receive your National magazine.

# KAP ALUMNI and ACTIVE

Order Your Jewelry Directly from This Page

## KAPPA DELTA RHO OFFICIAL BADGE PRICE LIST

### REGULATIONS

Crown Set Whole Pearl Delta .....	\$ 15.00
Crown Set Whole Pearl Delta, Garnet Points .....	15.00
Crown Set Whole Pearl Delta, Ruby Points .....	16.50
Crown Set Whole Pearl Delta, Diamond Points .....	35.00
Crown Set Whole Pearl Delta, Diamond Points, Diamond in Center of Delta .....	40.00
Crown Set Whole Pearl Delta, Ruby Points, Diamond in Center of Delta .....	25.00
Crown Set Whole Pearl Delta, Ruby Points, Ruby in Center of Delta .....	18.50
Full Diamond Delta .....	85.00
Full Diamond Delta with Diamond in Center of Delta .....	95.00

### GUARD PIN PRICES

	Single	Double
	Letter	Letter
Plain .....	\$ 2.75	\$ 4.25
Crown Set Pearl .....	7.75	14.00

Jeweled badges may be engraved at no extra charge, providing a deposit of at least one-third of total amount accompanies the order. Instructions for engraving should be clearly printed. Check all names and dates carefully.

Proper official release must accompany your order to avoid delay in delivery.

Be sure to mention the name of your Chapter when ordering a guard for your pin.

## Burr, Patterson & Auld Co.

Send for Your FREE Personal Copy of "The Gift Parade"

Published Exclusively by Your Official Jewelers

ROOSEVELT PARK

DETROIT 16, MICHIGAN

America's Oldest—and Most Progressive—Fraternity Jewelers

### COAT-OF-ARMS GUARDS

Miniature, Yellow Gold .....	\$ 2.75
Scarf Size, Yellow Gold .....	3.25

### SISTER PINS

Crown Set Whole Pearl Delta, Garnet Points .....	\$ 11.00
Crown Set Whole Pearl Delta, Ruby Points .....	12.00
Crown Set Whole Pearl Delta, Ruby Points, Ruby Center of Delta ..	13.00
Crown Set Diamond Delta .....	60.00
Crown Set Diamond Delta Diamond Center .....	70.00
Chased Kappa and Rho, Regulation Badge .....	\$1.50 extra
Sister Pin .....	1.00 extra
White Gold Badges .....	\$ 3.00 additional
Platinum .....	20.00 additional
Pledge Buttons, doz. ....	\$ 9.00
Recognition Buttons	
Small Monogrammed Gold Filled, each	1.00
Large Monogrammed Gold Filled, each	1.50
Miniature Coat-of-arms, Gold, each.	1.00
Miniature Coat-of-arms, Silver, each	.75

COAT OF ARMS  
RECOGNITION

PLEDGE

SMALL MONO.  
RECOGNITION

LARGE  
STAGGERED  
MONO. RECOGNITION

SISTER PIN  
PEARL Δ RUBY POINTS  
AND CENTER  
PLAIN K AND P

SISTER PIN  
PEARL Δ RUBY POINTS  
AND CENTER  
CHASED K AND P

REGULATION  
PEARL Δ RUBY POINTS  
PLAIN K AND P

REGULATION  
PEARL Δ RUBY POINTS  
AND CENTER  
CHASED K AND P

JEWELLED  
GUARD

PLAIN  
GUARD

ALL PRICES ARE SUBJECT TO 10% FEDERAL EXCISE TAX AND TO STATE SALES OR USE TAXES WHEREVER SUCH STATE TAXES ARE IN EFFECT.

# Chapter Directory

## Alpha—Middlebury College

Advisor—Reginald Cook  
Consul—Douglas H. Phillipsen  
Propraetor—Ralph Ellis  
48 South Street  
Middlebury, Vt.

## Beta—Cornell University

Advisor—Curtiss Pfaff  
Consul—Bruce Glenn  
Propraetor—Ben Woodward  
312 Highland Road  
Ithaca, New York

## Delta—Colgate University

Advisor—John Hoben  
Consul—William White  
Propraetor—William McDonald  
Hamilton, New York

## Epsilon—Franklin College

Advisor—Dr. Clifford Murphy  
Consul—Richard Foster  
Propraetor—Richard Switzer  
801 E. Jefferson Street  
Franklin, Indiana

## Zeta—Pennsylvania State University

Advisor—Dr. George Hudson  
Consul—Henry Faller  
Propraetor—Albert Arnold  
P. O. Box 767  
State College, Pa.

## Eta—University of Illinois

Consul—Arthur Bower  
Propraetor—Frederick Roland  
1110 S. Second Street  
Champaign, Illinois

## Theta—Purdue University

Advisor—Maurice Hamilton  
Consul—Tom Shideler  
Propraetor—Phillip Harms  
1134 Northwestern Avenue  
West Lafayette, Indiana

## Iota—Bucknell University

Advisor—John Hale  
Consul—Jack Whisler  
Propraetor—Robert Hardy  
College Hill  
Lewisburg, Pa.

## Kappa—Ohio State University

Advisor—Gordon Eldredge  
Consul—Daniel Stouffer  
Propraetor—Edward Helal  
1985 Waldeck Avenue  
Columbus, Ohio

## Lambda—University of California

Advisor—Donald L. Edgar  
Consul—John Brennen  
2601 Le Conte Avenue,  
Berkeley, California

## Pi—Gettysburg College

Advisor—Dr. C. Allen Sloat  
Consul—Henry Bittle  
Propraetor—Robert H. Boyer  
249 Carlisle Street  
Gettysburg, Pa.

## Nu—Indiana University

Advisor—Claude T. Rich  
Consul—Max H. Schulze  
Propraetor—Robert Luzadder  
Building J. Rogers Center  
Ind. Univ., Bloomington, Indiana

## Xi—Colby College

Advisor—Ralph S. Williams  
Consul—John Whittier  
Propraetor—Michael Wilcox  
Waterville, Maine

## Rho—Lafayette College

Advisor—William S. McLean  
Consul—Gerald I. Wilson  
Propraetor—J. Rivers Adams  
Easton, Pa.

## Sigma—Oregon State College

Advisor—Morris Robertson  
Consul—Donald Messerle  
Propraetor—Gerald D. Blade  
140 N. 23rd Street  
Corvallis, Oregon

## Psi—Lycoming College

Advisor—H. R. Otto  
Consul—Kenneth McDaniel  
Propraetor—Wilbur Swartwood  
605 Franklin Street  
Williamsport, Pa.

## Omega—Indiana State Teachers College

Advisor—Robert Murray  
Consul—Kenneth Kaufman  
Propraetor—Eugene Iaconemma  
1070 Grant Street  
Indiana, Pa.

## Alpha Alpha—Lock Haven State Teachers College

Advisor—Franklin McIlvaine  
Consul—Glenn Miller  
Propraetor—Kenneth Fogleman  
539 West Church St.  
Lock Haven, Pa.



THE QUILL AND SCROLL

*R. D. No. 1, Macungie, Penna.*

Kappa Delta Rho Fraternity, P.O. Box 36, West Hempstead, N. Y.  
Entered as Second Class Material at the Post Office at Easton, Penna.  
Return Postage Guaranteed