

THE QUILL AND SCROLL

of Kappa Delta Rho



National Directory

OFFICERS AND DIRECTORS

Pres. Floyd A. Baughman (1962)
1836 Longview Court,
West Englewood, N. J.

Vice Pres. O. D. Roberts (1962)
Dean of Men,
Purdue University,
West Lafayette, Indiana

Treas. Robert D. Corrie (1960)
P. O. Box 36,
West Hempstead, N. Y.

DIRECTORS

E. Mayer Maloney (1960)
335 South Jordan Avenue,
Bloomington, Indiana

Merle W. Garing (1960)
2561 Carishbrook Drive,
Oakland, California

George E. Shaw (1960)
Scarswold Apts., 3D,
Garth Road,
Scarsdale, New York

Frederic T. Closs (1962)
402 Mansfield Street,
Belvidere, New Jersey

John Hoben (1964)
Hamilton, New York

Kenneth C. Kramer (1964)
Box 851,
State College, Pa.

O. L. Doud (1964)
431 Burgess Drive,
Menlo Park, California

ALTERNATE DIRECTORS

Robert D. Corrie (1960)

John Padget (1960)
710 Stewart Avenue,
Ithaca, New York

James Hertling (1960)
2114 Rockport Road,
Bloomington, Indiana

RITUAL COMMITTEE

John Padget
James Hertling

EDITOR QUILL AND SCROLL

Charles F. Beck,
924 South Avenue,
Westfield, New Jersey

SCHOLARSHIP ADVISER

John Hoben

EXPANSION COMMITTEE

O. D. Roberts, Chairman
O. L. Doud
John Padget
James Hertling

LEGAL ADVISERS

Orrin G. Judd,
655 Madison Avenue,
New York, 21, New York

Leo T. Wolford,
501 So. Second Street,
Louisville 2, Kentucky

NATIONAL HISTORIAN

George E. Shaw

NATIONAL CHAPLAIN

The Very Reverend
Harold F. Lemoine,
87 Fifth Avenue,
Garden City, New York



Official Publication of Kappa Delta Rho



KAPPA DELTA RHO FRATERNITY

Founded at Middlebury in the spring of 1905 by *George E. Kimball, Gino A. Ratti, Chester W. Walch, Irving T. Coates, *John Beecher, Thomas H. Bartley, *Benjamin E. Farr, *Pierce W. Darrow, Gideon R. Norton and Roy D. Wood.

*Deceased

THE QUILL & SCROLL

Business office, Box 36, West Hempstead, New York.

The *Quill and Scroll* is published four times a year, in February, May, September and November.

Entered as second class matter at the Post Office at Easton, Pa.

Publication Office—535 Northampton St., Easton, Penna.

Printed by Correll Printing Company, Inc., Easton, Penna.

Subscriptions are available only to life members of the fraternity at \$10.00 each.

Notice of change of address, giving both old and new address should be forwarded at least thirty days before date of issue.

All manuscripts and correspondence submitted for publication should be addressed to the Editor, Charles F. Beck, 924 South Avenue, Westfield, N. J. Photographs should be sharp, glossy prints. Halftone cuts: 120 line screen.

The Cover . . . Iota's new building as visualized by the architect, Malcolm A. Clinger, Lewisburg, Penna.

Circulation this issue: 7200

*Member of the National
Interfraternity Conference*



VOL. LXV NO. 1

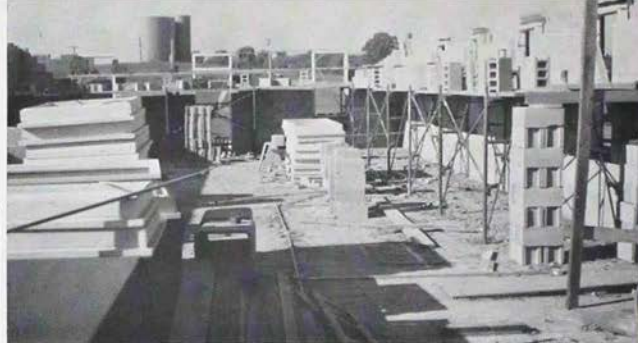
MAY 1959

THE QUILL AND SCROLL

of Kappa Delta Rho

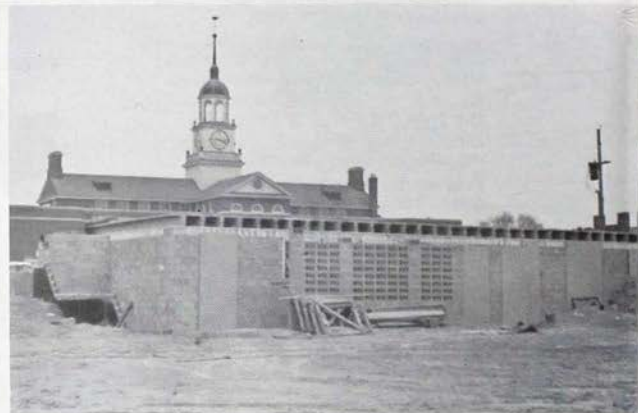
SPECIAL FEATURES	PAGES	REGULAR FEATURES	PAGES
Iota Chapter Construction . . .	3	Pages from History	4
The 47th National Convention	7	The Editor's Forum	5
1959 Odd-Year Convention . . .	7	Chapter Eternal	11
Pi Chapter Award	8	Alumni Across the Nation . .	14
Bill Myers, most cited K.D.R.	9	Chapter Chatter	18
Scholarship Report	10	Why Not	19
Fire in the Chapter House . . .	12		
The Fraternity Idea	17		

Under Construction, June 1959



Groundbreaking Ceremonies.
Left to right, Brothers Hoff, Pickell, Jackman, Griffith,
Cherneckski and Gardner. October 1957.

Rear
Elevation,
Dec. 1958



Rear
Elevation,
June 1959



Iota Chapter in the Throes of Construction

Tremendous strides have been made toward the goal of a new and permanent chapter house for Iota. In June 1958 an announcement was made of the chapter's intention to proceed with construction. It was hoped that the new building would be completed by the weekend of June 6, 1959, but several revisions in the summer of 1958 forced extension of this deadline. The final plans call for a more elaborate building than originally contemplated. The building now under construction will house a dining room, kitchen, chapter room, workshop, storage room and heating room in its basement. The design takes advantage of the sloping plot so that the rear gives the impression of a three-story edifice. The first floor plan includes a huge living room, house mother's quarters and a library. The sec-

ond floor will provide living facilities for twenty-eight men. The addition of a portico to the front of the building gives it a stately appearance blending nicely with the surrounding university structures.

Joseph Gardner, Iota '25, arrived in Lewisburg Oct. 15, 1958 to start construction. By Homecoming, the excavation was completed. At the onset of Winter in mid-December, the foundation had been poured, structural walls were at the first floor level and the first floor pre-stressed slabs were in place. During this activity, the Building Fund Committee, (Chairman Roy Jackman, Iota '49) was attempting to sell the former chapter house. Much needed capital was obtained when a buyer was located at State College on November 10th . . . principally through the efforts of Anthony Cherneski,

Iota '32. A subsequent poll of alumni members ratified the sale of both the house and its furnishings. Since then, Iota has been renting its former home back from the new owner as temporary quarters.

Partially due to his efforts during the early construction work, Joe Gardner became ill in the Winter and was forced to advise the Committee that he would be unable to continue his part of the job. However, he did agree to serve on the building committee and has served invaluable in this capacity.

Costs have naturally risen . . . not only because of inflation, but due to the necessity of hiring an outside contracting firm, and the inclusion of additional refinements in the original design. The Building Committee met with Mr. Zell-

(continued on page nineteen)

Pages from History

The Funds of Kappa Delta Rho

This short summary of the history of two funds established by the national fraternity is intended as informative material for all members . . . showing how and why your national operates to the fraternity's benefit.

The Quill and Scroll Trust Fund

The Quill and Scroll Trust Fund was established under the terms of a Deed of Trust dated November 26, 1927. Since then, each duly initiated member of Kappa Delta Rho, as an integral part of his initiation, has contributed the sum of ten dollars in payment for a life subscription to the national publication.

These sums are accumulated and added to the Trust Fund once a year. The income from the Trust

is used to defray in part the expense of publishing *The Quill and Scroll*.

The present Trustee of our Fund is The New York Trust Company, 100 Broadway, New York 5, N. Y. The Trust is limited to legal investments and has been well managed throughout the years. As of December 31, 1958, market value of the securities comprising the Trust was considerably over \$50,000. Approximately \$2,000 of net income was realized from the Trust in the fiscal year ended June 30, 1958.

Kappa Delta Rho Scholarship Fund

The following resolution adopted by the Board of Directors of the National Fraternity of Kappa Delta Rho, Inc., at Bread Loaf, Vermont, on September 1, 1956, established this Scholarship Fund.

"RESOLVED . . . that at this Golden Anniversary the Fraternity establish at Middlebury College, where the Fraternity was founded in 1905, a Commemorative Scholarship Fund to be known as the Kappa Delta Rho Scholarship Fund. Such fund to be the property of the College and the income therefrom to be distributed by the College authorities to worthy male students of the two upper classes majoring in science or mathematics, with preference being given to members of the Kappa Delta Rho Fraternity.

"An initial contribution of \$500 is hereby authorized to be paid from the treasury of the Fraternity with the expectation that further contributions for this purpose will be made from time to time either by the Fraternity or by various members direct to the College."

The above Fund now stands at

(continued on page nineteen)

The Editor's Forum . . .

With the current issue of the Quill and Scroll, we hope to start a revitalization of the national magazine of Kappa Delta Rho. As is true of any radical change, there will be some "bugs" which will have to be ironed out. We ask you to bear with us in this transition period.

The national officers and your editor will consider any constructive suggestions, criticisms and comments — and will act upon them as promptly as possible. Our major interest is to provide the men of Kappa Delta Rho with a magazine they will be proud to receive . . . a representation of the scope of the fraternity . . . a welcome addition to every K.D.R. home.

New departures in this issue have been confined to an extensive revision of format with emphasis on illustrative material and typograph-

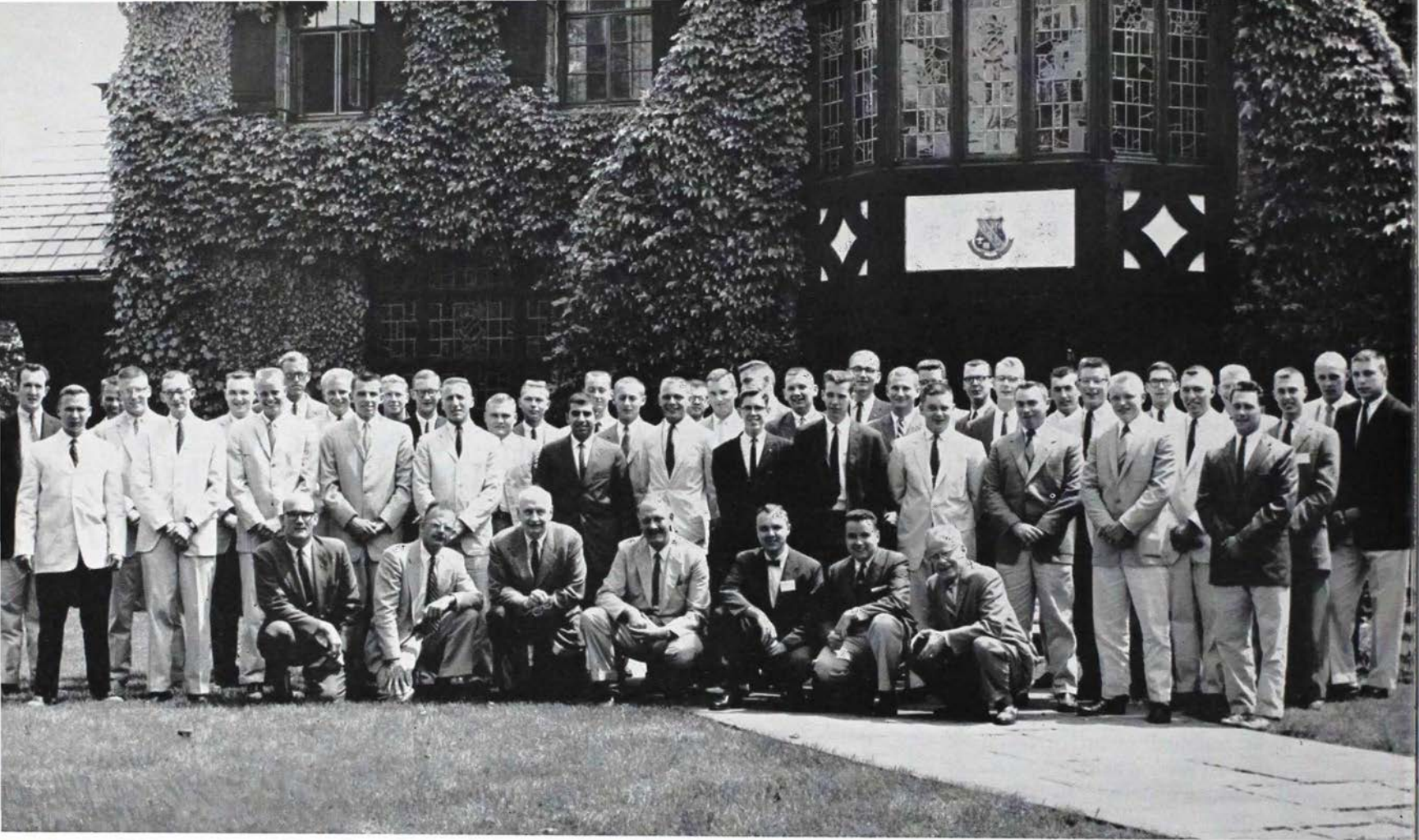
ic changes. Suggestions still to be considered include the following:

- A contest to determine a new name for this publication.
- A classified advertising section.
- A column relating KDR history, five, ten and twenty-five years ago.
- Fiction by actives and alumni.
- A photography contest.
- Feature articles on unusual hobbies of actives and alumni.

The Quill and Scroll of the future . . . whether it bears that name or not . . . will be exactly what our actives and alumni wish it to be. We should like to see the day when each chapter and each alumni group will be filing frequent news stories complete with photographs and drawings. We look forward to establishing "reporters" in each of

these units to help keep us up-to-date on current developments affecting KDR across the country. Volunteers for this task are welcome at all times. We want to hear from you . . . about you. Your views on the proposed suggestions and any others you may wish to submit are important to us. We shall endeavor to print and discuss controversial issues. The mail we receive will help determine which way this enterprise shall go. It's up to *you*.

In closing, a word of commendation is due to our retiring editor, Don C. Wolfe. For fourteen years responsibility for this magazine rested on his shoulders . . . and for fourteen years, four issues, each filled with harder work than can be realized appeared at your mailbox. We wish him well in his retirement, and hope that our efforts prove as satisfactory.



Official Photograph of Delegates to the 47th National Convention

The Forty-Seventh National Convention

This scanning of some of the more important happenings at last year's August 21-23 convention at Zeta Chapter House, Pennsylvania State University, State College, Pennsylvania, is included to help bring our chapters and alumni up-to-date inasmuch as the Quill and Scroll was not published in the intervening period.

Much of the material that should have been included in this story has been eliminated because of the unfortunate time lapse.

Item #1 Executive Secretary Don Wolfe submitted his resignation as of August 15, 1958. A talent search was started to find his successor.

Item #2 Scholarship Commissioner Hoben cited K.D.R.'s dismal record in 1956-57, (latest year on which complete data was available). President Roberts called scholarship the biggest stumbling block in the expansion hopes of the fraternity. Highest Scholarship award to Nu of Indiana. Most Improvement to Sigma of Oregon State.

Item #3 Resolution and Ritual Amendment. The following amendment was passed on a roll call of 88 Yea votes against 13 Nay votes:

"Whereas at the 1950 Convention the words "white Gentile" were eliminated from the requirements for membership as stated in the Constitution of the Fraternity, and

Whereas the Ritual of the Fraternity now contains a provision adopted at the 1952 Convention which, if enforced, would limit the membership to white gentile candidates, and

Whereas it is desired to unite all Chapters of the Fraternity in the preservation of the Christian principles which inspired the founding of the Fraternity as exemplified in the statement of Article II of the Constitution, "the practice of the highest ideals of the Christian faith", now, therefore:

BE IT RESOLVED:

1. That each Chapter possesses the right to determine the specific basis of selection of members within the general framework of the national Constitution with primary emphasis on character, AND

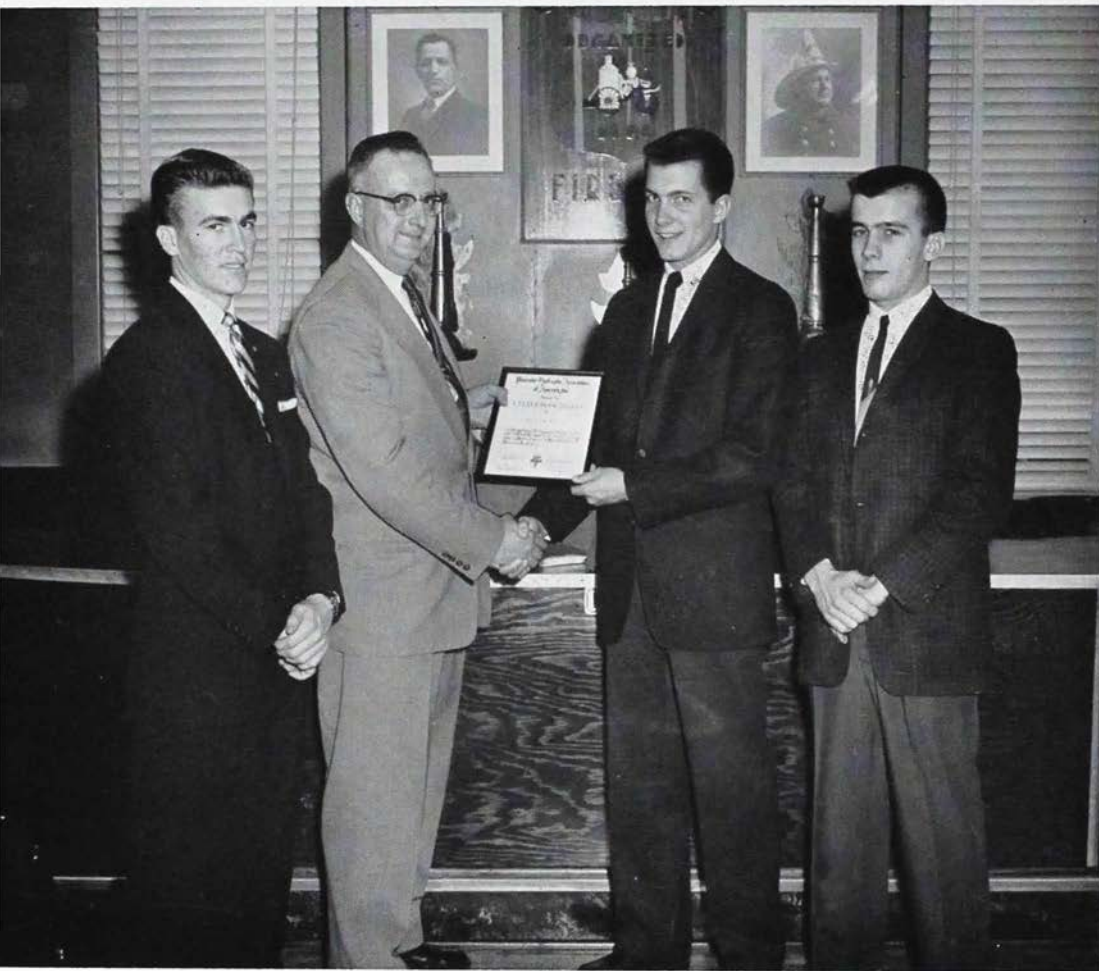
2. That the restrictive provision adopted in 1952 and confirmed at the 1954 Convention be stricken from the Ritual and that a copy of the revised Ritual be furnished each Chapter for its guidance in initiations, AND

3. That after each Chapter has drawn up its By-laws to determine its own explicit standards for membership in addition to the National Constitutional requirements, a copy of these Chapter By-Laws be sent to the President and to the Executive Secretary of the National Fraternity not later than Jan. 1, 1959."

Item #4 Best Chapter award to Nu chapter of Indiana University. Runner-up, Beta of Cornell University.

IMPORTANT NOTICE

The Odd-Year Convention of the National Fraternity of Kappa Delta Rho will be held at the Hotel Governor Clinton, Seventh Avenue and 31st Street in New York City, August 22nd, 1959. Sessions will start at 9:30 A.M. and continue throughout the day.



Pi Chapter Receives Award

Raymond E. Menges, President of the Gettysburg Fire Department and chairman of the Muscular Dystrophy Drive, Gettysburg, Pennsylvania, is shown presenting a citation from the Muscular Dystrophy organization to members of Pi Chapter, Kappa Delta Rho Fraternity of Gettysburg College for their assistance to the firemen in the conduct of the recent Muscular Dystrophy drive at a meeting in the engine house, on Jan. 14, 1959. Left to right are Frank Coffman, Pi, Raymond Menges, Kenneth Shockley, President of Pi, and Allen Slater, Vice President of Pi.

"Bill" Myers, Beta '14, most cited K.D.R., leaving Cornell Deanship

Born on a dairy and tobacco farm in the hills of Chemung County, New York, William I. Myers came to Cornell in 1910 to study agriculture. After getting his Ph.D., he was appointed Assistant Professor of Farm Management. In 1933, now Professor of Farm Finance, he was called to Washington to head the agency that helped save American agriculture from threatened disaster. In five years as head of the Farm Credit Administration, Bill controlled the distribution of five billion dollars in loans to debt-ridden farmers. When he left government service in 1938, agriculture was in better shape due largely to his farm credit policies.

Brother Myers came home to Cornell as head of the Agricultural Economics Department and later became Dean of the New York State College of Agriculture.

In 1952 he reentered the Washington arena as Chairman of President Eisenhower's National Agricultural Advisory Commission. The Commission is assisting the President and Secretary of Agriculture Ezra T. Benson in formulating the national farm policy. When the commission was formed, the New York Times

commented in an editorial, "General Eisenhower could hardly have put the chairmanship of the group in better hands than those of the man he has selected, William I. Myers."

Last November, eight of the leading farm organizations of New York State cited Bill as . . . "Teacher, Economist, Administrator and Advisor whose 45 years of distinguished service have kept the College of Agriculture at Cornell preeminent in teaching, research and extension — whose dedicated leadership . . . has influenced national policy . . . to the lasting benefit of farmers and consumers."

In January 1959, the New York State Horticultural Society and several similar groups spoke of Bill in part as follows:

"It has been said that the greatness of a man is measured by the impress he leaves upon human affairs. Of our friend 'Bill' Myers, we can state it more plainly. He has left his footsteps on the farms in all parts of America. Farm people are close to his heart and his contributions to better farming, better farm management and better living by farm people are many and great."

On July 1st of this year, after this long and illustrious career, Bill is retiring from his Deanship at Cornell. He assuredly holds a record as being the most cited member of Kappa Delta Rho. In addition we believe Dean Myers also holds another record—that of being the first K.D.R. to have a grandson, (Peter Martin, Beta '61) who is a member of our fraternity.

Editor's note: We would appreciate hearing of any similar instances.



Scholarship Report 1957-58

Ed. Note: Because of the difficulty in securing official figures, scholarship reports usually lag behind by about a six month period. As noted at the last Convention, the Fraternity had no other place to go but up.

For the second consecutive year, Nu Chapter, Indiana University edged out Delta Chapter of Colgate for top honors in scholarship. Alpha Chapter of Middlebury won the accolade for the most improvement over the previous year.

A substantial gain in over-all performance from all-time low of 19-56-57 was evident. In that doldrum, only two chapters, Delta and Nu, stood above their campuses' all-mens' average. This past year seven chapters, Alpha, Beta, Delta, Theta, Nu, Xi, and Sigma, broke academic par. On the other hand more than half our chapters are below the all-mens' averages on their campuses and need help.

"Scholarship is the biggest stumbling block in the expansion hope of the fraternity," said O. D. Roberts at the last convention. We now must face up to the issue of initiative and leadership in scholarship. All of the officers of the Fraternity realize the importance of the challenge, if KDR is to grow in prestige, influence, and efficiency.

Here are a few first steps for every chapter to consider:

1. Appoint a chapter scholarship advisor, give him authority and support. Make him responsible for reviewing academic performance of all potential pledges. Put him in charge of a preceptorial program for weak students.
2. Get your local IFC to concentrate on a program for upping scholarship in all fraternities on your campus.*
3. Stop wasting time and money rushing men who can never

make the grade required for initiation.

4. Start a campaign for a scholarship fund to be used for awards for outstanding achievement.**
5. Pass along to your national scholarship advisor all notions and gimmicks so he can circulate them to other chapters.

The reports for 1958-59 are just beginning to trickle through. Zeta Chapter of Penn State won a local scholarship award by rising from 51 out of 52 chapters to 20th. Lambda jumped into the first ten after a 23rd place finish last year. It *can* be done!

*At Purdue last year the IFC helped to lift the grade average of freshman pledges from 3.6 to 4.7; 65% of the pledges made their initiation average instead of 48% for the previous year.

**Alpha Chapter, Middlebury, by December, 1958 had raised a scholarship fund of \$1,435.00 with money still coming in.

Chapter Eternal

F. Carlisle Coates Alpha '23

Died at 62 years of age, January 19, 1959, after a short illness. As a construction engineer he had charge of all highway construction in the State of Vermont. He is survived by his wife and two sons.

Ralph W. Floody Gamma '18

Brother Floody was among the charter members of Gamma chapter. After a long career in the Navy, he returned to State College, Albany, N. Y. He was elected principal of Smithtown, L. I. Branch High School prior to his death.

Henry F. Harvey Alpha Hon. '03

Brother Harvey was one of our oldest honorary members and is reported to have died at his home in Bristol, Vt., on May 14, 1958.

Earl F. Horsford Alpha '17

Died September 14, 1958. Brother Horsford was a veteran of World War I and managed the Horsford Nurseries at Charlotte, Vt. for many years. He served two terms in the Vermont Senate and was a representative of the U. S. Social Security Administration. He is survived by his wife and a daughter.

Arthur J. Mott Alpha '16

Died October 16, 1958 after a brief illness. Brother Mott was Superintendent of Schools at North Attleboro, Mass. He is survived by his wife, two sons and a daughter.

Dr. Everett W. Probst Rho '26

Brother Probst, a graduate of Lafayette and New York University Medical School, passed away late in 1958. He became an industrial surgeon and during W. W. II served as a Lieutenant Colonel in the Army Medical Corps. Brother Probst was a member of Phi Alpha Sigma medical fraternity and a founder of Alpha Phi Omega.

Harris S. Wells Alpha '36

Brother Wells died after a long illness on November 15, 1958. He was associated with the First National Bank of Boston and is survived by his wife and four children.

Charles C. Wilcox Alpha '14

Born in Green River, Vt. 1890 . . . Died March 10, 1958. Brother Wilcox was associated with Du Pont de Nemours Company for many years. Seventeen years ago he entered the Real Estate business and maintained an office in Barrington, N. J. until his death. He is survived by his wife, two sisters and a brother.

Change of Address Form

If you have changed your address recently clip off this form and mail to:

Kappa Delta Rho Fraternity
P.O. Box 36, West Hempstead, N. Y.



NEW ADDRESS:

Name Chapter

Address

City Zone State

OLD ADDRESS:

Street

City Zone State

Fire in the Chapter House

by JOHN MORRIS

Vice Chairman, Campus Safety Association; Member National Fire Protection Association.

When fire strikes the average chapter house the occupants are in real danger, because most chapter houses are "built to burn." This conclusion must be drawn from frequent reports of fraternity fires and the heroic measures needed to get people out of the buildings. It is not often that we read about a night fire in a chapter house in which the students left their bedrooms and went calmly down stairways or down a fire escape stairs out of the house.

More typical is this Alabama incident, as reported in a recent issue of FIRE NEWS, published by the National Fire Protection Association:

"Careless smoking was the probable cause of fire that originated during the night in the first story living room of this 3-story brick, wood-joisted fraternity house. When the fire was discovered at 4:15 A.M. by one of the 15 occupants asleep on upper floors the fire was spreading up the open stairway that extended from the living room to the third story. Since there were no other interior stairways and no outside fire escapes the 14 boys and their housemother escaped by dropping from windows.

In 1943 state and local fire officials had recommended to the University president that adequate fire escapes be installed on the 36 fraternity and sorority houses. So far only four have installed outside fire escapes."

What is wrong with fraternity house construction? The one worst feature is the open stairway all the way from the first floor or basement to sleeping areas. This is unfortunately typical; it is exceptional to find a fraternity house which has a properly enclosed main stairway or other stairway leading directly outside the building. Yet the danger can hardly be overemphasized. If you can walk upstairs from the living room of the house to the sleeping quarters without passing through one or more substantially constructed, self-closing fire doors, then fire originating in the lower part of the house will certainly follow the same path and carry deadly superheated gases and smoke right to the bedrooms or dormitory.

This chimney action of fire was dramatized by wholesale loss of

life in a series of hotel fires at Chicago, Dubuque and Atlanta in 1945 and 1946, when fire raced upward in the buildings through unprotected vertical openings. These and other tragedies of fire and panic are the source of construction fire safety principles of the *Building Exits Code* of the National Fire Protection Association, a nationally recognized code for fire safety in buildings.

Although fraternity houses do not have the extreme height of multi-story hotels, they are none the less vulnerable. A fire which demonstrated this destroyed the S. A. M. House at Illinois during the early morning hours several years ago. When firemen arrived at the scene, they had to spend the first valuable fifteen minutes at the fire taking students off the roof. Fire starting in the basement had filled the ornate vaulted living room and upper floors with heat

and smoke. There was no place to go except out the windows.

It is not enough that a chapter house is equipped with a good fire escape on the outside of the building. If occupants are to be able to reach it, the inside stairways must be so constructed as to prevent the upward spread of fire. To make alterations providing this sort of protection is not an insurmountable problem. At the Second National Conference on Campus Safety at the University of Minnesota in 1955, John J. Ahern* said

"It would be more serious if this were an impossible problem to solve, but actually it is very simple. Even in our oldest buildings, the stairways can be enclosed using either a metal lath and plaster type of partition with good self-closing doors, or the more ornamental type of wired glass in metal frame en-

closure . . . In a recent survey of a typical fraternity house it was found that a three-story stairway c o u l d be enclosed using these movable partitions for approximately \$1500 . . . Please understand that a treatment of openings as outlined above will not provide a completely fire safe building, but it will slow down the progress of the fire and smoke long enough to enable the students to reach the emergency exits . . ."

Enclosed stairways are, of course, not the only thing to be considered in fraternity house fire safety. Automatic fire detection devices strategically placed will ring bells or send out horn blasts when fire occurs. An automatic sprinkler sys-
(continued on page twenty)

*Director, Fire Protection and Safety Engineering, Illinois Institute of Technology.

Alumni Across the Nation

Anderson Estate

Bequeathes Gift to Middlebury. The death of Brother Malcom T. Anderson, Alpha '25 was reported in a past issue of *Quill and Scroll*, to which he had contributed articles on the actuarial side of the Life Insurance Business. Brother Anderson's Estate recently gave Middlebury College \$74,286, to be used for Plant Development.

Charles F. Beck,

Rho '44 to new position. Charles F. Beck has been appointed Advertising Promotion Manager of Rodale Press, Emmaus, Pa., publisher of *Organic Gardening and Farming and Prevention*. Mr. Beck was formerly an Account Executive at Edwin Bird Wilson Advertising Agency, N. Y.

Editor's Note: This is picked up verbatim from ADVERTISING AGE, June 1,

1959. To the readers of QUILL AND SCROLL it will mean that there will probably be a change of the editor's address in the near future . . . as soon as we can locate housing in the vicinity. Be sure to watch for it!

Robert H. Brough,

Eta '52, Assistant Traffic Engineer of the Chicago Area Traffic Department of the Illinois Bell Telephone Company was promoted in January 1959 to Traffic Engineer of the same department.

Robert Donald Corrie,

Treasurer of National to Wed. Mr. and Mrs. Edward Madison Cameron, Jr. of Garden City, L. I. and Elk Lake, Pa. announced the engagement of their daughter, Miss Ann McLean Cameron, to Mr. Robert Donald Corrie, son of Mr. and Mrs. George Wilson Corrie, of West Hempstead, L. I., Feb. 15, 1959. Miss Cameron is a Wells Col-

lege graduate and did graduate work at Stanford and Columbia Universities. She received the M.A. degree in special education. She teaches at the Central Palsy School, Roosevelt, L. I. Following graduation from Cornell Mr. Corrie was a first Lieutenant in the Army Finance Corps. He received the M.B.A. degree from Wharton School, University of Pennsylvania, where he was a finance instructor. He is National Treasurer of Kappa Delta Rho Fraternity and is with the Meadow Brook National Bank.

Rev. William F. Davison,

Delta, '43 has been appointed Associate Director of Field Services of the Colgate Rochester Divinity School, Rochester, N. Y. Brother Davison's new home address is 85 Southview Terrace, Rochester 20, N. Y.

Lewis G. Ensinger,

Alpha '46, Advances. The Chase Manhattan Bank, New York announced the promotion of Brother Ensinger from Assistant Treasurer to Assistant Vice-President recently. Lew is in the International Department and has been with the bank since 1947. He is currently attending the Graduate School of Banking, Rutgers State University. His present address is 65 Hickory Hill Road, Eastchester, N. Y.

Percy E. Fellows

Student Award has been established at Bulkeley High School in Hartford, Conn., in honor of Percy E. Fellows, *Alpha '20*, who retired in June 1956 as head of the Guidance Department. Brother Fellows now lives in Weathersfield, Conn.

Charles Harvi,

Alpha '38 Becomes Partner. Brother Charles Harvi has been elected a partner in the firm Cal-

lan-Harvi Associates. The organization specializes in technical and management consulting, executive and technical search and sales engineering. Location: Dover, Massachusetts.

Dr. Curtiss B. Hickcox,

Alpha '34 Elected President American Board of Anaesthesiology. Brother Hickcox has been Secretary and Treasurer of this organization during the past ten years. He studied at Tufts University School of Medicine and is currently on the staff of the Hartford Hospital, Hartford, Conn.

Sumner J. House,

Named Director of Student Personnel. Brother House, *Alpha '41*, for the past six years Dean of Carroll College Wisconsin, has been appointed Director of Student Personnel of Newark New Jersey College of Engineering. Mr. and Mrs. House are residing at 86 Farms Road Circle, East Brunswick, Milltown, N. J.

Milford C. Howard,

Beta, '36 retired recently from the U. S. Forest Service after 31 years of duty. His former responsibilities included being in charge of national forests in Virginia and Arkansas. Brother Howard's most recent rank was Assistant Chief of the Division of Recreation and Lands, Region 9.

Donald G. Kennedy,

Xi '58, was married to Jean Ann Merrill in Portland, Maine at the First Parish Church on April 4, 1959. Don reported to Lockland Air Force Base as a Second Lieutenant for PreFlight Training April 29, 1959.

"Gus" Seeley,

Rho, '57 reports that he has been assigned to the Field Advertising Department of Proctor and Gamble Distributing Company. He is doing his share of travelling all over the country.

Lee Vranek,

Eta, '46 has been appointed Manager of the Denver, Colorado branch office of Manufacturers Life Insurance Company. Brother Vranek earned his success as a Brokerage Manager and more recently as Assistant Branch Manager of the Company's Chicago office.

J. Bradford Wharton,

Zeta, '35, chairman of Maryland Biscuit Company, Baltimore, Md., and president of Wealden Company, Wilmington, Del., was elected president and chief executive officer of National Can Corporation in September 1958. Brother Wharton is giving up posts as director and chairman of the finance committee of Lear, Inc., Santa Monica, Cal., and president of Guardian Insurance Company, Baltimore, Md., as well as discontinuing most of his consultant business to devote more time to his new position. He will retain only sufficient director-

ates in a spread geographically and industrially which will assist him "in keeping a finger on the pulse of things". Brother Wharton's principal function will be in developing long range policy.



KENNETH W. WANTLAND

Kenneth W. Wantland,

Epsilon, '28 has been elected assistant director of Eli Lilly and Company's glandular products manufacturing division. A thirty year veteran with Lilly, Brother Wantland has been associated with Insulin research and glandular products development since 1937. He is a member of the American Chemical Society and the American Association for the Advancement of Science.

Rev. Michael Zaparyniuk, Jr.,

Iota, was ordained to priesthood at Holy Trinity Ukrainian Orthodox Church, Trenton, N. J. last December. Father Zaparyniuk has been designated pastor of the church filling the vacancy left by the death of his father, the Very Reverend Michael Zaparyniuk, Sr.

For the third year the Delta Upsilon chapter at Illinois was host to an exchange student from Holland, and for the third time it pledged its guest.

The Fraternity Idea

In co-operation with members of the campus Interfraternity Council Indiana University has produced "The Fraternity Idea", a 22 minute motion picture depicting fraternity life on an average college campus.

The film is designed to serve as an effective aid during rushing; to create a favorable attitude regarding fraternities in the mind of the general public; to indicate positive values of fraternity life; and to serve as a guidance tool to those interested in fraternity life.

Fraternal showing of "The Fraternity Idea" is planned for such activities as rush week, visiting days, parents' clubs, fraternal leadership-training programs, alumni rush activities, or in dorms by representatives of the interfraternity council. Other possible showings would be to P.T.A.'s and other adult groups, faculty meetings, and workshops and conferences.

This documentary type film presents a factual picture of fraternity life and ideals. Using no particular fraternity, campus, or location, it shows how groups of men are bound together by a desire for genuine comradeship and ideals—the lifeblood of any fraternity. Robert H. Shaffer, Dean of Students, Indiana University served as an educational film consultant.

By illustrating the advantages of fraternity life in terms of daily living, co-operation, brotherhood, and social affairs, the film stresses how young fraternity men become aware of their social responsibilities and their duties as citizens through these activities. The picture explains that the individual is responsible for his own progress within the group and emphasizes the importance fraternities place on scholarship, leadership, and moral standards. Much of the film depicts the various activities and opera-

tional responsibilities of fraternities that provide the necessary experiences for the growth and development of the individual man.

To illustrate the contribution of fraternity life to a man's future success, the film ends with the distinguished president of a leading university telling a fraternity group that he owes much of his success to the development of attitudes, friendships, and ideals formed during his undergraduate fraternity days.

"The Fraternity Idea" may be purchased from the Audio-Visual Center, Indiana University, Bloomington, Indiana, or the Educational Film Library Association, 250 West 57th Street, New York 19, New York. Prices are \$200 in color or \$100 in black and white.

Rental prints may be obtained from the Audio-Visual Center, Indiana University, Bloomington, In-

(Continued on Page Eighteen)

Chapter Chatter

ZETA DATA

OCTOBER 11, 1958

First Place finish in Lawn Display for Homecoming, featuring a cheerleader and a moveable cheering card section in the back-ground.

APRIL 10, 1959

Kappa Delta Rho won the Sigma Chi scholarship trophy for the fraternity showing greatest improvement in scholarship from the previous semester. See scholarship report, pg. 10.

MAY 1, 1959

Sophomore Ed Kikla is making a name for himself pitching on Penn State's baseball nine. At this point in the season, his record is 3 wins, 0 defeats and a remarkable ERA of 0.45.

LAMBDA REPORT

MAY 15, 1959

Founder's Day Banquet, held in Berkeley was attended by 77 undergraduates and alumni. O. L. Doud addressed the meeting, bringing first-hand greetings from the National. A new chapter house has been obtained on a six year lease basis, starting in August.

MAY, 1959

Informal reports state that Lambda, ranked 23rd in the last scholarship list, has jumped into the first ten!

Editor's Note:

We would like to thank all contributors to this first issue in a new era of *Quill and Scroll*. All alumni groups and chapters have not been represented . . . much as we should like to have seen them in print.

The material which *is* in these pages is the result of efforts by a few individuals. If your chapter or group is not represented, it is because no one has forwarded information. Reiterating, we will *print* what we *receive*. We cannot print what is not available. So let's pitch in and mail out the stories, photos, (glossy, please) and art work. *If every chapter and alumni group sent one page of copy four times a year, this magazine would go over a hundred pages.*

THE FRATERNITY IDEA

(continued from page seventeen)

diana with the rental prices being \$10 for color and \$5 for black and white. These rental fees may be applied toward the purchase price for those wishing to purchase a copy. The film is also available on an annual rental plan that leads to ownership, costing \$54 per year for four years.

Why Not . . .

. . . think about the boy across the street who's going to college this year? If the college is any of the ones listed on the back cover of this magazine, *send his name* to the rushing chairman of that chapter — or if you prefer, send your listing to us for forwarding.

The major source of names of eligible freshmen is alumni recommendation . . . and it doesn't matter at all if the college is not your own, as long as it does have a K.D.R. chapter. The boys on campus will certainly appreciate your thoughtfulness.

Fraternities and sororities, long exempt from personal taxes at the University of Oregon, are legally resisting a ruling of the state tax commission that compells them to pay. The tax bill is being backdated five years.

Did you know that there are only eleven fraternities (NIC) having more than 100 chapters?

IOTA CONSTRUCTION

(continued from page three)

er and Mr. Young, Vice President and Treasurer respectively of Bucknell University in February, submitting a mortgage proposal for \$50,000. Immediate approval of the major portion of this figure was granted. Eventually the Board of Trustees confirmed approval for the remainder. The University has been most co-operative and is anxious to see the new house open its doors. They have offered to landscape the property charging only for labor.

On June 6th, 1959 a cornerstone ceremony was held, attended by President Floyd Baughman, and Acting Executive Secretary Ken Kramer of the National as well as 65 Alumni and guests. Sam Hoff, Iota '53 acted as Master of Ceremonies. Reverend Bauer of Milton, Pennsylvania gave the invocation. There were talks by Roy Jackman and Anthony Cherneski prior to their setting of the cornerstone, and a review of the history of the local chapter since reactiva-

tion in 1946 by Dr. Dalzell Griffith, Iota '23, Head of Bucknell's Civil Engineering Department. After the ceremony the party adjourned to a buffet dinner.

Iota still has many problems to iron out, but they have licked the major one . . . initial inertia. Funds are still needed and furnishings must be provided, but the Building Committee is optimistic. They feel that with continued support such as has been exhibited in the past, Homecoming 1959 should be just that for K.D.R.'s at Bucknell.

PAGES FROM HISTORY

(continued from page four)

\$1,679, the latest contribution being \$200 from the estate of Brother George T. Whitmore, Jr., Alpha '21.

Contributions for the Scholarship Fund may be made directly to Middlebury College, Middlebury, Vt. with instructions that they be credited to the K.D.R. Scholarship Fund. Such contributions are deductible for income tax purposes.

FIRE

(Continued from Page Thirteen)
tem will quench a fire as soon as it begins. Fire escapes are useful if interior stairways are equipped to hold back fire until people can get to them. Rope ladders, ropes, and vertical ladder fire escapes for any type of student housing are poor provision against fatal fires and are below the minimum essential acceptable under the NFPA standards.

It would be a worthwhile project for every chapter of every fraternity to take stock of its fire safety. Here are some of the points that weigh heavily:

- (1) Good housekeeping in basement and storage areas.
- (2) Adequate wiring brought up to date, to avoid overloading of circuits, and proper fuses of 15 amperes maximum capacity in fuse boxes.
- (3) Sensible decorations for parties—including flameproofed

paper. Christmas trees are almost explosive if neglected; follow the special fire prevention precautions.

- (4) Smoking safety; large ashtrays; don't tolerate careless disposal of cigarettes.
- (5) Provide a second way out from every part of the house, especially from sleeping areas and large public rooms.

Any chapter looking ahead to construction of a new house, or expansion or remodeling of the old, should demand of architects and contractors good fire safety in construction for the sake of the lives of its members. Competent advice can be obtained through municipal fire prevention bureaus and fire departments in larger cities, through the state fire marshal of any state, or by writing the Campus Safety Association, National Safety Council, 425 North Michigan Avenue, Chicago 11, Illinois.

Living expenses of two 21-year-old Hungarian refugees at the University of Massachusetts, students in engineering, have been underwritten by the IFC, the total being \$1900 a year. This will cost each IFC member one dollar a semester for five years.

* * *

Not all tragic events occur on fraternity campuses. Last fall two Rice Institute sophomores were killed while carrying out a prank involving a contest over an auto tire.

* * *

The State of Massachusetts has established a loan fund to assist students who wish to attend college either in the state or elsewhere. The New York legislature will consider a similar plan.

KAP ALUMNI and ACTIVES

Order Your Jewelry Directly from This Page

KAPPA DELTA RHO OFFICIAL BADGE PRICE LIST

REGULATIONS

Crown Set Whole Pearl Delta	\$ 15.00
Crown Set Whole Pearl Delta, Garnet Points	15.00
Crown Set Whole Pearl Delta, Ruby Points	16.50
Crown Set Whole Pearl Delta, Diamond Points	35.00
Crown Set Whole Pearl Delta, Diamond Points, Diamond in Center of Delta	40.00
Crown Set Whole Pearl Delta, Ruby Points, Diamond in Center of Delta	25.00
Crown Set Whole Pearl Delta, Ruby Points, Ruby in Center of Delta	18.50
Full Diamond Delta	85.00
Full Diamond Delta with Diamond in Center of Delta	95.00

GUARD PIN PRICES

	Single	Double
	Letter	Letter
Plain	\$ 2.75	\$ 4.25
Crown Set Pearl	7.75	14.00

COAT-OF-ARMS GUARDS

Miniature, Yellow Gold	\$ 2.75
Scarf Size, Yellow Gold	3.25

SISTER PINS

Crown Set Whole Pearl Delta, Garnet Points	\$ 11.00
Crown Set Whole Pearl Delta, Ruby Points	12.00
Crown Set Whole Pearl Delta, Ruby Points, Ruby Center of Delta ..	13.00
Crown Set Diamond Delta	60.00
Crown Set Diamond Delta Diamond Center	70.00
Chased Kappa and Rho, Regulation Badge	\$1.50 extra
Sister Pin	1.00 extra
White Gold Badges	\$ 3.00 additional
Platinum	20.00 additional
Pledge Buttons, doz.	\$ 9.00
Recognition Buttons	
Small Monogrammed Gold Filled, each	1.00
Large Monogrammed Gold Filled, each	1.50
Miniature Coat-of-arms, Gold, each.	1.00
Miniature Coat-of-arms, Silver, each	.75

Jeweled badges may be engraved at no extra charge, providing a deposit of at least one-third of total amount accompanies the order. Instructions for engraving should be clearly printed. Check all names and dates carefully.

Proper official release must accompany your order to avoid delay in delivery.
Be sure to mention the name of your Chapter when ordering a guard for your pin.

Burr, Patterson & Auld Co.

Send for Your FREE Personal Copy of "The Gift Parade"

Published Exclusively by Your Official Jewelers

ROOSEVELT PARK

DETROIT 16, MICHIGAN

America's Oldest—and Most Progressive—Fraternity Jewelers

PLEDGE

COAT OF ARMS RECOGNITION

SMALL MONO. RECOGNITION

LARGE STAGGERED MONO. RECOGNITION

SISTER PIN PEARL Δ RUBY POINTS AND CENTER PLAIN K AND P

SISTER PIN PEARL Δ RUBY POINTS AND CENTER CHASED K AND P

REGULATION PEARL Δ RUBY POINTS PLAIN K AND P

REGULATION PEARL Δ RUBY POINTS AND CENTER CHASED K AND P

JEWELLED GUARD

PLAIN GUARD

ALL PRICES ARE SUBJECT TO 10% FEDERAL EXCISE TAX AND TO STATE SALES OR USE TAXES WHEREVER SUCH STATE TAXES ARE IN EFFECT.

Chapter Directory

Alpha—Middlebury College

Advisor—Reginald Cook
Consul—Douglas H. Phillipsen
Propraetor—Ralph Ellis
48 South Street
Middlebury, Vt.

Beta—Cornell University

Advisor—Curtiss Pfaff
Consul—Bruce Glenn
Propraetor—Ben Woodward
312 Highland Road
Ithaca, New York

Delta—Colgate University

Advisor—John Hoben
Consul—William White
Propraetor—William McDonald
Hamilton, New York

Epsilon—Franklin College

Advisor—Dr. Clifford Murphy
Consul—Richard Foster
Propraetor—Richard Switzer
801 E. Jefferson Street
Franklin, Indiana

Zeta—Pennsylvania State College

Advisor—Dr. Hudson
Consul—Henry Faller
Propraetor—Charles Weyandt
420 E. Prospect Avenue
State College, Pa.

Eta—University of Illinois

Consul—Robert Sullivan
Propraetor—Frederick Roland
1110 S. Second Street
Champaign, Illinois

Theta—Purdue University

Advisor—Maurice Hamilton
Consul—William Kiffmeyer
Propraetor—Ronald Morgan
1134 Northwestern Avenue
West Lafayette, Indiana

Iota—Bucknell University

Advisor—John Hale
Consul—Jack Whisler
Propraetor—Robert Hardy
120 S. Sixth Street
Lewisburg, Pa.

Kappa—Ohio State University

Advisor—Frank Koval
Consul—Kenneth Hoetzel
Propraetor—Edward Helal
1985 Waldeck Avenue
Columbus, Ohio

Lambda—University of California

Consul—David Cardelli
2250 Piedmont Avenue
Berkeley 4, California

Pi—Gettysburg College

Advisor—Dr. C. Allen Sloat
Consul—Henry Bittle
Propraetor—Robert H. Boyer
249 Carlisle Street
Gettysburg, Pa.

Nu—Indiana University

Advisor—Claude T. Rich
Consul—Max L. Schulze
Propraetor—Robert Luzadder
Building J. Rogers Center
Ind. Univ., Bloomington, Indiana

Xi—Colby College

Advisor—Ralph S. Williams
Consul—David Tomaccio
Propraetor—Norcross Tell, Jr.
Waterville, Maine

Rho—Lafayette College

Advisor—William S. McLean
Consul—Gerald I. Wilson
Propraetor—J. Rivers Adams
Easton, Pa.

Sigma—Oregon State College

Advisor—Morris Robertson
Consul—Donald Messerle
Propraetor—Gerald D. Blade
140 N. 23rd Street
Corvallis, Oregon

Psi—Lycoming College

Advisor—Robert W. Rabold
Consul—Kenneth McDaniel
Propraetor—Wilbur Swartwood
605 Franklin Street
Williamsport, Pa.

Omega—Indiana State Teachers College

Advisor—Robert Murray
Consul—Anthony Sobata
Propraetor—Eugene Iaconemma
1070 Grant Street
Indiana, Pa.

Alpha Alpha—Lock Haven State Teachers College

Advisor—Franklin McIlvaine
Consul—John Schroyer
Propraetor—Kenneth Fogleman
539 West Church St.
Lock Haven, Pa.



THE QUILL AND SCROLL

924 South Avenue, Westfield, N. J.

Kappa Delta Rho Fraternity, P.O. Box 36, West Hempstead, N. Y.
Entered as Second Class Material at the Post Office at Easton, Penna.
Return Postage Guaranteed