



---

# *The* Quill and Scroll

*of the*

KAPPA DELTA RHO  
FRATERNITY

SUMMER  
1958

All human institutions are imperfect. And fraternities never will become perfect. It would be foolish to expect an organization of very young people, in college, to attain a perfection of conduct and policy quite unknown to any organization of adults. So we ought not to demand that the fraternities become so many Terrestrial Paradises, purged of snobbery and exclusiveness and folly. But they have been improving. The rough hazing of which they often were guilty two decades ago has diminished markedly; and at most colleges, far from being an influence detrimental to scholarship—which, on occasion, some of them used to be—they now have become, most of them, bulwarks of a decent minimum, at least, in academic performance. Fraternity brothers and sorority sisters seem to have grown increasingly tolerant, too, of differences of opinion and social standing. Fraternities are not getting worse: which is more than one can say of our world at large.

*Russell Kirk*

*(In the National Review)*



Member of the National  
Interfraternity Conference

## WANTED

A contribution to the 1957 Loyalty Fund from two alumni who sent in blank envelopes from New Haven, Conn. and Seattle, Washington.

Information concerning the above blank envelopes is urgently solicited by the Loyalty Fund Committee who had to pay reply postage to get the above information.

## Interfraternity Authors

April 1958 Interfraternity Journals carried articles by two KDR's.

The Fraternity Month carried a special article "Why Do They De-Pledge?" by Howard G. Neuberg, Illinois '52.

Banta's Greek Exchange carried a reprint of the Winter 1957 Quill and Scroll article, "How Important Are Alumni?" under the title "A Case Study in Successful Alumni Relations". Written by Don Wolfe, Lafayette '25, editor, the case study was supplied by Beta Chapter at Cornell.

## One Third

Two of the six alumni trustees of Colgate University are KDR's, Orrin G. Judd, Delta '26, and Ernest F. Staub, Delta '27. Both are lawyers, the former in New York City, the latter in Chicago. Brother Judd is also legal adviser to Kappa Delta Rho.

# The Quill and Scroll



Official Publication  
of

Kappa Delta Rho Fraternity

VOL. LXIV MAY, 1958 No. 2

## In This Issue

1958 Convention .....	2
Alpha Alpha Installed .....	4
Outstanding Seniors .....	6
Beta Is Host .....	9
Sweetheart Crowned .....	11
These Gave in '57 .....	12
With KDR's .....	15
Franco's Spain .....	18
Across the Editor's Desk .....	21
Chapter Nuptial .....	22
Chapter Eternal .....	23
Directory .....	24

The Cover — Delegates to Eastern Regional Conference at Beta relax between sessions.

Don C. Wolfe—EDITOR

Circulation this issue .....6800

Entry as second-class matter at the post office at Easton, Pa. PUBLICATION OFFICE—535 Northampton Street, Easton, Pa.

Published four times a year in February, May, September and November.

EDITORIAL AND BUSINESS OFFICE: R. D. 2, Stockton, N. J. Subscriptions are available only to life members at \$10.00 each.

Notice of change of address should be given at least 30 days before date of issue. Give old as well as new address. Address all correspondence and contributions to the editorial office, R. D. 2, Stockton, N. J. Pictures will be returned upon request.

# *1958 Convention Being Held At Zeta Chapter, Penn State*

---

The 1958 Convention of Kappa Delta Rho is being held in the chapter house of Zeta Chapter at State College from August 21 to 24, with delegates from KDR chapters everywhere and alumni from chapter corporations and State College convening for the three day sessions. Alumni are especially invited to attend any or all of the sessions, especially the grand banquet on Saturday evening.

An innovation this year brings a Leadership Training Session to the Convention for the first time in KDR history. Thursday will be devoted to this part of the program with chief officers of the chapters being instructed in finances, rushing and various other phases of chapter operation.

Kenneth C. Kramer, 108 W. Beaver Ave., State College, is general chairman of the Convention and all inquiries and reservations should be addressed to him. His telephone number is Adams 8-8013.

## THE PROGRAM

THURSDAY, August 21st

### Morning Registration

- 10:00 a.m.—Board of Directors Meeting  
Chapter Room—Chapter House
- 12:00 noon—Buffet Lunch—Chapter House
- 1:30 p.m.—Leadership Training Session  
Introduction by Edward Pollock, Assistant to  
the Dean of Men for Fraternity Affairs, Penn  
State.
- 2:15 p.m.—Group Discussions on:  
Finances—Chapter Room  
Pledge Training—Party Room  
Scholarship—Dining Room  
Chapter-National Relations—Library
- 4:15 p.m.—Initiation Ceremony—Living Room—Chapter House
- 5:30 p.m.—Dinner—Chapter House
- 7:00 p.m.—Informal Smoker and Discussion
- 8:30 p.m.—Informal Party

## FRIDAY, August 22nd

7:30 a.m.—Breakfast—Chapter House

9:00 a.m. - 12:00 — Business Meeting — 111 Boucke  
Building  
Invocation  
Opening Ritual  
Roll Call  
Reading of Minutes of Previous Convention  
Appointment of Committees  
Reports of Officers  
Reports of Committees

12:00 noon—Lunch at the Chapter House

1:30 p.m.—Business meeting continued—109 Osmond  
Laboratory Bldg.  
Reports of Chapter Delegates

6:00 p.m.—Dinner—Hetzl Union Building

8:30 p.m.—Informal Dance at the Chapter House

## SATURDAY, August 23rd

8:00 a.m.—Breakfast at the Chapter House

9:00 a.m.—Business Meeting Continued—111 Boucke  
Building  
Unfinished business  
New business  
Election of directors  
Adjournment

12:00 noon—Lunch at the Chapter House

1:00 p.m.—Group Picture

1:30 p.m.—Reorganization Meeting, Board of Directors  
—Chapter Room  
Reports  
Election of Officers

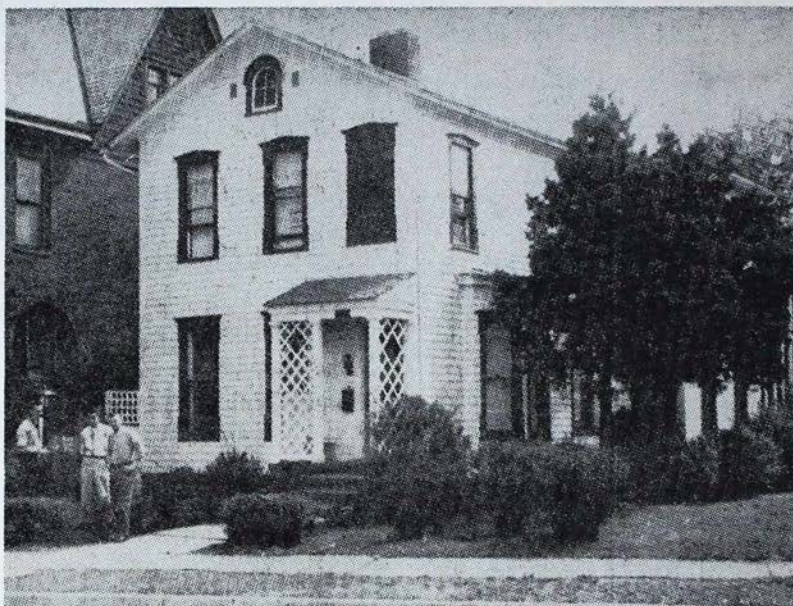
4:30 - 5:30—Cocktail Party—At the Chapter House

6:30 p.m.—Grand Banquet, Nittany Lion Inn  
Toastmaster — Ralph "Sam" Wherry, Zeta,  
Head of Dept. of Commerce, Penn State  
Invocation —  
Introductions:  
Speaker —

9:00 p.m.—Dance at the Chapter House

## SUNDAY, August 24th

8:00 a.m.—Breakfast  
Departure



## *Alpha Alpha Chapter Installed at Lock Haven*

Kappa Delta Rho has its eighteenth chapter and Lock Haven State Teachers College its first national social fraternity. On April 26 local fraternity Epsilon Omega Alpha was installed as Alpha Alpha Chapter of Kappa Delta Rho, following initiation of the 26 members in the afternoon by an initiation team from the sponsoring chapter, Zeta, at Penn State.

Initiation of members was performed in the house on Water Street during the afternoon. Besides presenting the chapter with a set of initiation robes the national body also gave the chapter a handsome Bible to be used for chapter initiations and other important affairs.

Epsilon Omega Alpha was started last fall when several men interested in forming a fraternity posted a notice on the college bulletin boards asking "all men interested in forming a social fra-

ternity please meet in the day-room". The nucleus of the local was expanded until the present 26 active brothers were organized and living in a house off the campus. James Murphy became the first president of Epsilon Omega Alpha.

### **Becomes a Colony**

Progress in the new group was rapid and on October 17, 1957 the Board of Directors voted to give colony status to Epsilon Omega Alpha. It then became Alpha Alpha Colony of Kappa Delta Rho. Franklin M. McIlvaine, professor of psychology at the college and a member of another social fraternity became the faculty adviser to the new colony. His fraternity experience and extreme interest in bringing social fraternities to the Lock Haven campus have been invaluable aids to the new group during their pledgship period.

Progress during colonyship was

so rapid that the new group was deemed worthy of becoming a chapter during March. They had rented a house at 428 W. Water Street (about four blocks from the campus) which they had renovated and furnished, begging or borrowing much of the larger furniture. The exterior of the house was painted, the basement pumped out and sealed (the house faces the Susquehanna River) and all woodwork painted. Twelve men took up residence in the house, its full capacity, and social affairs were held regularly in the neatly furnished first floor. A kitchen adds to the utility of the house, for although all members must eat in the college dining room, the kitchen is equipped for late breakfasts, snacks, and parties.

Besides renovation members found time for community and campus activities by conducting the March Bloodmobile visit to the campus, solicit for the Heart Fund, and with Sigma Sigma Sigma sorority conduct the Easter Seal drive on campus. The first issue of a chapter paper was published during the spring also.

Several members of the local fraternity were most active in organizing the colony and helping it grow to chapter status. George Stoll, living in the house this summer and taking care of all correspondence, etc., Arlan Neill of Ridgway, James Murphy of Glassport, Calvin Arter of Lock Haven, Michael Mesack of Stoyestown and Richard Funk of Renova, all in Pennsylvania, all served as officers and chairmen during the growth period. They furnished much of the leadership for the new group during a critical period.

#### **Installation**

Installation ceremonies were conducted as a part of the installation banquet at the Fallon Hotel following initiation, with Executive secretary Don Wolfe and Expansion secretary Jack Morgart performing the public ceremony

climaxed by the formal presentation of the charter. Consul James Murphy accepted the charge for the chapter and acknowledged receipt of the charter.

Dr. Richard T. Parsons, president of the College, welcomed the new chapter to the campus and reviewed part of the history of its growth. Dean of Men Carey E. March was spokesman for the faculty in acknowledging the new chapter as an important part of the campus. Brief remarks were also heard from Don Wolfe, representing the national body of Kappa Delta Rho, and Franklin McIlvaine, adviser to the chapter. Larry Moran, elected consul for 1958-59, acted as master of ceremonies and the chapter chaplain Edward Joseph gave the invocation.

#### **Future Plans**

Future plans of the chapter include the acquisition of a larger house to sleep more of the members under one roof. Since boys' dormitory space is at a premium at Lock Haven Teachers College and since plans of the College do not include much additional men's dormitory space the chapter is anxious to room all members eventually, especially since it will aid greatly the already bulging enrollment of the college. Maximum membership has been set at 40 according to the policy of the present officers.

Alpha Alpha Chapter today is a reality and a working chapter—one that has visions of their own house in the not too distant future. With the energy they have shown in the first year of their existence as an organized group it shouldn't be long before their visions become realities.

---

In a small town, everybody knows what every one else is doing, but they all read the local paper to find out who got caught at it.

# *Outstanding Seniors of 1958*

The Quill and Scroll, for the second consecutive year, presents the seniors voted by their chapters as having contributed the most to Kappa Delta Rho on their respective campuses.

All have been active in campus and chapter activities as well as maintaining better than average scholarship. Their contributions to their fraternity is here publicly acknowledged and due honor paid to them.

Success in business is sure to follow such significant accomplishments in college. The Quill and Scroll wishes them all success possible in the future.

## **BETA — CORNELL**

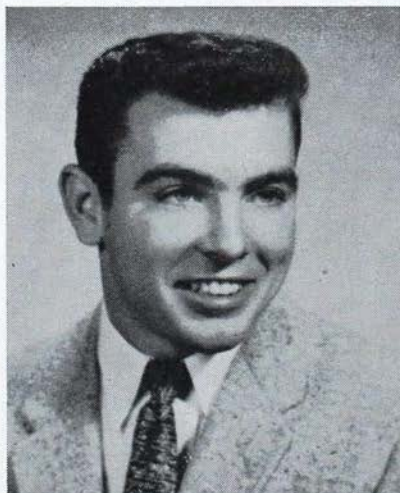
### **JOHN R. PADGET**

Course — Agricultural Engineering

Home town — Tully, New York

Campus Activities — Varsity Crew Manager, Varsity Manager's Club, Cornell Crew Club, Athletic Association Awards Committee, IFC Appeals Board, IFC Orientation Committee, Big Red Band, Reportory Band, Seven "S" Honorary Society, Cornell Society of Agricultural Engineers, Baptist Student Fellowship.

Chapter Activities — Consul, Rush Chairman, House Manager, House Committee, Expansion Committee.



## **EPSILON — FRANKLIN**

### **JAMES W. MILLER**

Course — A.B. in Education

Home town — Bridgeport, Indiana

Campus Activities — Young Democrats, Modern Language Club, F-men (president), Interfraternity Council (president), football, cross-country, track. Winner of eight varsity letters and F-blanket.

Chapter Activities — Consul, Scholarship chairman, propraetor, praetor, quaestor, junior tribune, senior tribune.



## **XI — COLBY**

### **DONALD G. KENNEDY**

Course — A.B. in History

Home town — Portland, Maine

Campus Activities — AF-ROTC Cadet Colonel, Commander of Cadet Corps, Distinguished Military Graduate, Arnold Air Society, Band (president), Maine Intercollegiate Band Committee (chairman), Orchestra, Baseball Manager, Republic Aviation Speaking Prize, Goodwin Speaking Prize.

Chapter Activities — Senior Tribune, Student Government Representative, Editor-Xi Crier.

## **DELTA — COLGATE**

### **HASKELL SCHIFF**

Course — A.B. in Chemistry

Home town — Brooklyn, N. Y.

Campus Activities — Roy B. Smith Chemistry Prize, Chi Pi Mu (president), Phi Beta Kappa, Phi Society, Maroon Key, Konosioni (Senior Honorary), Soccer.

Chapter Activities — Senator



## **PI — GETTYSBURG**

### **EDWARD GIBBLE**

Course — A.B. in History

Home town — Pottstown, Pa.

Campus Activities — Booster Club, Men's Tribunal, SCA, Freshman Class Representative.

Chapter Activities — Steward (3 years), Student Senate, Inter-Fraternity Council (2 years).



## ALPHA — MIDDLEBURY

### J. MICHAEL McDONOUGH

Course — A.B.

Home town — Manchester, N. H.

Campus Activities—Interfraternity Council, ROTC Guards (pres.), Blue Key, Class President (3).

Chapter Activities — Consul, praetor.

---

## ALPHA ALPHA LOCK HAVEN

### MICHAEL MEZACK, III

Course — B.S. in Biology

Home town — Stoyestown, Pa.

Campus Activities — Kappa Delta Pi, Association for Secondary Education, Swimming Team, Varsity Club, Biology Club.

Chapter Activities — Senior Tribune.

---

## New Addition

Contractors are busy this summer building a \$60,000 addition to the Sigma Chapter House at 140 North 23rd Street, Corvallis, Oregon.

The new section will be three stories high and with changes made in the old house will enable the capacity to be raised to 61 from 42. It is expected to be finished for use this fall.

The new facilities also include a hostess' apartment as well as enlarged dining and living room facilities.

John McClure, 3824 N.E. Skidmore Street, Portland is in charge of alumni contributions toward the new addition.



*Editor's Note: No picture was available for Alpha Alpha. Kappa had no seniors and therefore omitted the election.*

---

## Lambda Observes Founders' Day

Founders' Day was observed in true KDR style by Lambda Chapter on May 23, 1958 with a banquet in the Sheraton-Palace Hotel, San Francisco. Actives and alumni participated in the special program which saw the election of officers and trustees of the Lambda Alumni Corporation.

Don Anderson, '46, was toastmaster for the program and Bob Sutherland, '50, did a yeoman job as songmaster. Awards were given to the outstanding pledge and outstanding active of the chapter. Chapter reports were highlighted by a special report on House Procurement and Finances, now the first topic with Lambda since the University has indicated its intentions of taking over the present KDR house soon.

In charge of reservations and general arrangements for the banquet was Chet Newell, '24, secretary of the Alumni Corporation.

# *Beta Chapter is Host To 1958 Regional Conference*

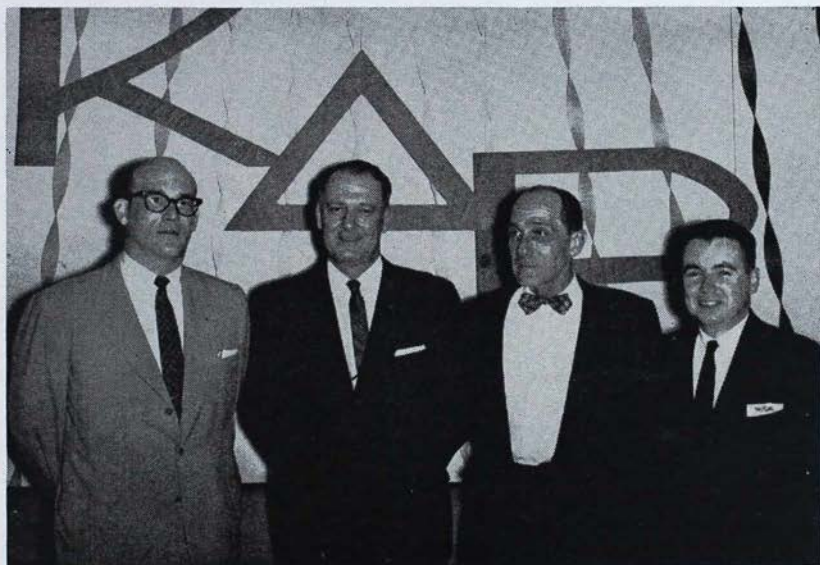
Ten Eastern chapters participated in the 1958 Regional Conference on April 18 with Beta Chapter at Cornell University as host. Representatives from Alpha, Psi, Omega, Pi, Zeta, Delta, Rho, Iota and Xi chapters sent 35 delegates to take part in the discussions of fraternity problems. National President O. D. Roberts, Executive-secretary Don Wolfe, Expansion-secretary Jack Morgart and Assistant-treasurer Bob Corrie represented the national organization, and served as consultants.

Saturday morning was given over to registration and informal discussions and get-acquainted groups, although several delegates had arrived Friday evening. After lunch the formal discussion groups were held in one of the university buildings. Areas of discussion in-

cluded chapter finances, chapter-national relations and pledge training. Groups were small enough so that chapters could state their particular method used in these areas, and discuss its efficiency with those from the other chapters present.

The entire group then joined in the last discussion on selectivity where all chapters could state the stand taken on this controversial subject. An interesting part of the group discussion was an informal vote of the ten chapters present, in which each stated just how his chapter would vote if formally asked to do so. Further discussion of the selectivity problem will take place at the National Convention in August at Penn State when all chapters will be present.

The grand banquet was held



Alternate Director Kenneth Kramer, National President O. D. Roberts, Executive Secretary Don Wolfe and Assistant Treasurer Bob Corrie were guests at the 1958 Regional Conference at Beta Chapter.

Saturday evening at the V.F.W. Hall in downtown Ithaca. (All other meals were served in the Beta chapter house.) National President Roberts addressed the delegates on the problems facing fraternities today, especially the problem of maintaining good scholastic standing amidst a variety of other demands on the student's time. As Dean of Men at Purdue he is very much aware of the problems of fraternities on the Purdue campus and elsewhere, since he is in demand as a fraternity speaker at IFC affairs in the Midwest and East.

A formal dance followed the banquet, dates being supplied by

the very efficient committee headed by Bruce Glenn, now Senior Tribune of Beta Chapter. Sunday morning was given over to informal discussions with most of the delegates leaving by noon in order to return to their respective campuses.

John Padgett, consul of Beta Chapter, was representative of the Beta hospitality that the chapter extended to all delegates, personally welcoming each guest. Local alumni who attended functions of the Conference were 'Clip' Turner, '31, and 'Doc' Shackelton, '19. Bob Corrie is also a Beta alumnus, class of 1953.

---

## *Pi Moves Into New House*

Pi Chapter is moving into a new house this fall, more imposing and large enough to accommodate a chapter of 40 or 50 members.

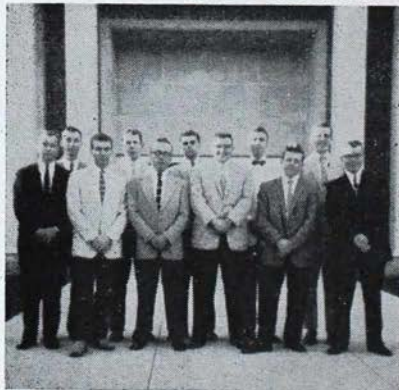
On June 7 the house committee of the alumni corporation made final arrangements to sell the old house on Lincoln Avenue and acquire the former Beuhler Hall on the campus. The chapter expects to take possession this fall.

Originally one of the smaller dormitories on campus, Beuhler Hall lends itself well to renovation as a chapter house. Largest and most important project of the chapter is to furnish it for the fall term since the furnishings in the present house will be lost in the new one. Most of the furniture will have to be new since the old house could accommodate but twelve men comfortably. Present strength of the chapter is 27 active members. A strong rush program has been instituted to bring this number to 40 at least, all of them living in the new quarters.

A section of the new look at Pi that will play an important part in future rushing is the scholastic improvement of the chapter.

Long engulfed in last place in scholarship standings on the Gettysburg campus, a concerted drive brought them up to sixth place during the last semester. (There are 13 fraternities on campus.) The new scholastic standing plus a house right on the campus will be potent factors in rushing during the coming year.

Pi Chapter extends to all KDR-dom a cordial invitation to visit their new quarters. They are proud KDR's right now and happy in the fact that after so many years they have acquired a house to accommodate all active members.



Pi Initiation Class — 1958

# *Anne Alloway Crowned Sweetheart of All KDR's*

Miss Anne Alloway, Eta Chapter Sweetheart and co-ed at the University of Illinois, was crowned National Sweetheart of Kappa Delta Rho at a "Bal de Couronnement" held in the chapter house at 1110 South Second Street, Champaign, on April 19. Gifts were presented during the crowning ceremony; KDR roses from the chapter, a jewel case and complete campact from the national KDR.

Promptly at 10 P.M. Anne was escorted by William Gullet, consul of Eta Chapter, down an aisle formed by the couples attending the ball to a throne at the head of the spacious Eta living room. Bill performed the crowning after a brief speech concerning past Sweethearts of KDR. (This is the second time that the honor has come to Eta chapter.) The gifts were presented during the crowning ceremony. A coronation waltz was played in honor of the new sweetheart.

The chapter house was tastefully and beautifully decorated as a Norman castle, bringing a medieval atmosphere to a modern dance. A moat and drawbridge had to be traversed to enter the house, and the moat was made realistic by the emission of white smoke in the evening darkness. Inside the main hall of the 'castle' were wall shields in honor of each individual chapter of Kappa Delta Rho. Locations were noted on each chapter shield.

Mr. and Mrs. J. P. Hipkind of Champaign were chaperons and entered into the Norman spirit prevailing. Richard Swallow was the social chairman in charge of the dance. He and his committee truly made it a memorable occasion.

## A SWEETHEART



**Crowned and Gifted**

## PANTY RAIDS?

Students, pupils, clerks, whatever name they have gone by, have tried to live up to rowdy reputations ever since the first crib notes were scribbled on the hem of a tunic. When medieval students were not huddled, quills poised, at the feet of the master, they were out on the town.

The University of Leipzig found it necessary to caution its playful students against interfering with the hangman in the execution of his duty. A despairing Paris clergyman wrote: 'A student's heart is in the mire, fixed on prebends (allowances) and things temporal and how to satisfy his desires.' The town of Oxford, England, complained officially: 'They sleep all day and at night roam about taverns and houses of ill-fame for opportunity of robbery and homicide'.

# These KDR's Gave \$1176.50 To Loyalty Fund for 1957

WILL YOUR NAME BE ON THE LIST FOR 1958?

For the second consecutive year Lambda Chapter has topped all other chapters in alumni contributions to the Loyalty Fund. More Lambda alumni contributed more to the 1957 Fund than did any other chapter. This is more significant since the chapter has had a concentrated building fund program running at the same time.

Through the regular mail you will receive your appeal for the 1958 Fund. Read the President's letter carefully and then contribute what you can to help build up your fraternity in numbers and in prestige. Your contribution will help to set up a program of expansion and services that would otherwise be impossible on our budget.

Use the reply envelope enclosed with this year's appeal. For the first time in many years we are asking you to furnish your own stamp, thereby increasing your contribution by four cents.

## ALPHA

George R. Ayres-'16  
Robert Blacker-'57  
William P. Burpeau-'24  
William H. Edmunds-'17  
Carl J. Ellsworth-'27  
Charles A. Fort-'15  
Ivan D. Hagar-'09  
Samuel N. Hicks, III-'59  
Arthur J. Hoffman-'30  
John B. Horner-'22  
George F. Lewin-'40  
Charles W. Murdock-'10  
George E. Shaw-'10  
Chester M. Walch-'07  
Raymond Walch-'46  
Roy H. Walch-'13  
Wayland F. Walch-'12  
Sidney P. White-'37  
Contributors—18  
Amount—\$100

## BETA

Howard E. Blair-'18  
Edward Borchers-'51  
Robert D. Corrie-'53  
William P. Colman-'19  
Eric Cronkhite-'54  
L. W. Davison-'16  
Gordon R. Dennis-'53  
Ralph A. Johnson-'25  
Cornelius C. Jones-'53  
Clarke B. Loudon-'17  
Michael A. McCarthy-'56  
John L. McElfresh-'20  
Richard E. Mastin-'55  
John E. Nye-'44  
James A. Oest-'31  
John R. Padgett-'58  
Roland W. Porter-'24

Burlye B. Pouncey, Jr.—'57  
James A. Ramsey-'21  
Harold Raynor-'56  
Alan W. Riddiford-'60  
John H. Sachleben-'56  
Everett A. Sargent-'39  
Robert C. Shoemaker-'14  
Carl G. Slutter-'57  
J. F. Wager-'33  
James W. Wilbur-'21  
H. Lynn Wilson-'24  
Contributors—28  
Amount—\$116

## GAMMA

Stephen D. Bull, Jr.—'41  
Francis H. Donahue-'21  
Jules G. Fiscus-'X'23  
Leland E. Foster-'22  
H. K. Hornung-'26  
Herbert W. Leneker-'43  
Zollie W. Privett-'48  
Almer J. Snider-'24  
Warren W. Wagner-'X'43  
Contributors—9  
Amount—\$33.

## DELTA

Donald C. Dinsmore-'55  
John D. Flagg-'X'29  
John B. Freestone-'23  
Gordon Hewitt-'42  
John Hoben-'30  
Ellsworth J. Johnson-'44  
Orrin G. Judd-'26  
Richard B. Kelsey-'31  
Martin J. Loeb-'57  
Peter B. Naeye-'25  
Ernest F. Staub-'27  
William A. Thomas, II-'52

Edward G. Watson-'33  
Contributors—13  
Amount—\$45.

## EPSILON

Jennings B. Sanders-'23  
Robert F. Volland-'43  
Leo T. Wolford-'12  
Contributors—3  
Amount—\$26.50

## ZETA

Robert W. Arnold-'49  
Harry E. Blansett, Jr.—'55  
Robert J. Calhoun-'50  
H. Guy Erb-'20  
C. H. Flickinger-'22  
J. L. Fuchs, Jr.—'37  
William D. Hartman-'34  
Edward T. Kitchen-'33  
Kenneth C. Kramer-'54  
R. R. McCombs-'28  
Joseph P. Milham-'36  
John L. Motz-'29  
Lane H. Riland-'51  
Leo Russell-'41  
Lester G. Stine-'47  
Samuel H. Weaver-'29  
Contributors—16  
Amount—\$64.

## ETA

G. R. Avery-'40  
Floyd R. Baughman-'28  
Howard F. Brown-'31  
A. E. Carlson-'34  
O. L. Doud-'22  
Robert W. Eby-'50  
Charles O. Foster-'56  
Howard R. Hannapel-'35

## Most Contributors

<b>LAMBDA</b> .....	<b>34</b>
<b>BETA</b> .....	<b>28</b>
<b>RHO</b> .....	<b>20</b>
<b>ALPHA</b> .....	<b>18</b>
<b>ETA</b> .....	<b>17</b>
<b>THETA</b> .....	<b>17</b>

A. G. Herche-'23  
Harry Hoogstraal-'38  
Weldon Powell-'22  
Robert D. Schutt-'34  
Paul Sisco-'50  
Floyd Sours-'58  
Richard V. D. Strong-'31  
Glenn C. Summerfelt-'42  
R. N. Weber-'36

**Contributors—17**

**Amount—\$87.**

### THETA

Urban H. Anslinger-'48  
R. H. Cade-'23  
John W. Campbell-'24  
\*W. H. Chambers-'36  
Thomas B. Chase-'50  
Alfred C. Kaser-'51  
Wilbur A. Koontz-'50  
Robert W. Kropf-'48  
Colin S. MacKenzie-'55  
George J. Peer-'45  
Enilio P. Ratti-'42  
Edward C. Rearick-'27  
Malcolm H. Small-'30  
C. H. Springer-'45  
William M. Steinfeldt-'38  
\*R. A. Suessse-'38  
Roger W. Walker-'46  
\*In Memorium

**Contributors—17**

**Amount—\$86.**

### IOTA

John L. Bergen-'35  
C. K. Budd-'24  
Charles I. Carpenter-'27  
George M. Craig-'X'38  
James D. Helt, Jr.'-43  
M. W. Huntingdon-'28  
Finley Keech-'22  
M. Joseph Martelli-'39  
Robert L. Payne-'30  
Charles L. Sanders-'13  
Clay S. Sanders-'13  
William Wolensky-'50  
William G. Carman-'X'58

**Contributors—13**

**Amount—\$60.**

### KAPPA

Kenneth P. Bowers-'X'56  
J. W. Gill-'26  
Henry Hausman-'26  
Herbert W. Hennick—Hon.  
Howard J. Kim-'29  
Harold C. Miller-'33  
Richard A. Pellow-'34  
Robert M. Sherwood-'34  
Charles W. Swormstedt-'22  
Horace S. Wetzel-'23

**Contributors—10**

**Amount—\$67.**

### LAMBDA

W. W. Alving-'33  
R. Donald Behrer-'55  
Clinton I. Brahnard-'24  
Robert W. Bruce-'26  
Norman J. Carmichael-'49  
Eugene F. Corbin-'27  
Frank H. Dunsmore-'25  
Lyman R. Fink-'33

Stan Gillette-'50  
William D. Gould-'26  
Erle Heath-'X'23  
Harry H. Iversen-'24  
Gardiner Johnson-'26  
Gordon Johnson-'26  
Stanley J. Jones-'26  
Barsley Jordan-'29  
Harold P. Knopp-'34  
Albert W. Larsen-'28  
Stewart A. Lindauer-'58  
Wayne Lobdell-'33  
Warren I. McCord-'56  
Ronald F. Martin-'58  
Turner A. Moncure-'26  
James W. Moon-'35  
Robert E. Nash-'57  
Stanley S. Petersen-'48  
H. Dieter Schugt-'53  
W. H. Shipley-'24  
Merritt G. Smalley-'51  
Thomas C. Tellefsen-'58  
Arthur R. Thorsen-'26  
F. Allen Whitaker-'51  
Roger P. Williams-'34  
Kenneth G. Wolfe-'42

**Contributors—34**

**Amount—\$124.**

### MU

Frederic J. DeWitt, Jr.'-22  
Samuel W. Glass-'32  
H. W. Gouldthorpe-'27  
Robert S. Innes-'39  
George D. Quelette-'28  
Robert O. Varnum-'27  
Francis E. Wheeler-'30

**Contributors—7**

**Amount—\$35.**

### NU

Richard Brunoehler-'50  
Walter E. Bunham-'27  
Arthur B. Clark-'29  
Lester L. Farrell-'34  
Robert Ford-'43  
Miles C. Gerberding-'56  
A. D. Hoopengardner-'62  
Ben W. Miller-'31  
Frank W. Oliphant-'32  
C. Dale Owens-'28  
Harvey F. Renee-'52  
Claude Rich-'29

**Contributors—12**

**Amount—\$42.**

### XI

Joseph G. Antan-'38  
Robert A. Cooke-'53  
Arthur E. Engdahl, Jr.'-55  
Kenneth R. Gesner-'53  
Robert L. Hooper-'52  
Harold F. Lemoine-'32  
Maurice F. Ronayne-'51  
William N. Taylor-'52

**Contributors—8**

**Amount—\$26.**

### OMICRON

Henry M. Booz-'33  
Eugene Campbell-'31  
R. Kent Dormay-'27  
C. B. Frazier-'32  
C. Dave McKay-'32

**Contributors—5**

**Amount—\$37.**

### PI

Arthur E. Armitage-'14  
George W. Aumiller-'31  
B. Donald Ellsworth-'20  
Walter E. Garman, Sr.'-20  
Vaughn L. Gibbs-'33  
Robert M. Laird-'20  
Richard E. Lippert-'53  
Robert S. Nagle-'35  
William H. Sandlas-'14

Charles A. Sloat-'33  
John W. Williams-'54

**Contributors—11**

**Amount—\$44.**

### RHO

A. Ralph Bartolacci-'57  
Robert M. Boarts-'26  
Roswell W. Corwin-'25  
Robert G. Croson—Hon.  
Kent Dyer-'28  
Norton D. Fern, II-'50  
E. G. Fooder-'32  
Robert E. Gerard-'33  
Ralph K. Gottshall-'27  
Philip L. Greenawalt-'34  
Robert C. Hamlyn-'50  
H. L. Hay, Jr.'-48  
David H. Koch-'60  
John K. McDonald-'49  
William T. Payne-'25  
Joseph R. Probst-'35  
Bob Relch-'51  
William J. Relick-'50  
W. Carson Wallace-'28  
Don Wolfe-'25

**Contributors—20**

**Amount—\$89.**

### SIGMA

Robert H. Andrew-'49  
Alfred B. Carter-'26  
R. Wayne Goodale-'29  
Walter A. Goss-'32  
A. R. Helis-'38  
Lawrence L. Plagmann-'41  
E. J. Schoen-'25  
Roger Q. Sherman-'38  
Monroe T. Smartt-'28  
Donald R. Wiley-'52  
Rex H. Wilson-'32  
Eugene Wymore-'38  
J. Orville Young-'49  
Keith F. Young-'49

**Contributors—14**

**Amount—\$45.**

### TAU

L. F. Brown-'31  
Donald A. Cuthbert-'30  
P. H. Ditzler-'36  
Dwight W. Lewis-'28

**Contributors—4**

**Amount—\$19.**

### PHI

Ross W. Bruner-'52  
Theodore Dake, Jr.'-52  
Earl W. Dittman-'53  
John F. Weller-'51

**Contributors—4**

**Amount—\$12.**

### PSI

D. E. McWilliams, Jr.'-52  
Charles Mitchell-'53  
Henry A. Van Zanten-'58

**Contributors—3**

**Amount—\$12.**

### Omega

Albert G. Lebedda-'57

### Members-at-large

Culbreath Whitehead, Jr.'-55

## Most Contributed

<b>LAMBDA</b> .....	<b>\$124</b>
<b>BETA</b> .....	<b>116</b>
<b>ALPHA</b> .....	<b>100</b>
<b>RHO</b> .....	<b>89</b>
<b>ETA</b> .....	<b>87</b>

# Wanted... Alumni Help in Rushing

Do you know a likely candidate for Kappa Delta Rho in any of the seventeen colleges where KDR has chapters? Do you have a good prospect for rushing from your neighborhood who will enroll at any of the colleges where KDR has a chapter? What information can you give us prior to his matriculation in the fall?

The actives want your help in rushing. They want the alumni to provide them with more leads in their rushing program and to make it easier have asked that the blank below be included in this issue of The Quill and Scroll for the convenience of those wishing to suggest a possible KDR of the future.

Active rushing chairmen have been selected for each chapter, with all of them being registered in the national office. Blanks sent in by alumni will be forwarded to the rushing chairman for proper action. It has also been suggested that each alumnus sending in a suggestion be notified as to what action the chapter took on his prospect.

KDR needs more help in all fields from the alumni this year. You can aid in many more ways than just by contributing to the Loyalty Fund for you can visit high school seniors in your vicinity and tell them about your fraternity. A personal visit does much more than all the literature we can send out and it will also help to perpetuate the kind of fraternity that you as an alumnus want it to be.

Help KDR in its rush program by sending in the names of any prospects today. Your help will be most appreciated by the chapters.

## RUSHING INFORMATION

I recommend the following as a possible rushee for Kappa Delta Rho:

Name .....

Address: Street .....

City ..... State .....

College to be attended .....

Graduate of ..... High School Year .....

Remarks: (Give any other pertinent information such as scholarship, athletic ability, relatives in KDR, etc. ....  
.....  
.....

Alumnus recommending the above .....

Address .....

Chapter ..... Year .....

Please mail the above to Kappa Delta Rho, R.D. 2, Stockton, N. J. It will be forwarded to the rush chairman of the chapter at the college the prospect expects to attend. (Additional blanks may be had upon request at the address above.)

# *With KDR's Here & There*

## **With USIA.**



**HOWARD G. NEUBERG**

Howard G. Neuberg, Eta '52, has resigned as assistant dean of men in charge of fraternities at the University of Illinois and has entered the United States Information Agency in Washington, D. C. He completed a twelve week training program for his new position and will be assigned overseas as either cultural affairs or public information officer. The position requires a knowledge of a foreign language.

Howie has been assistant dean of men since 1954. Before that he was overseas as civilian news chief with the Blue Danube Network of the Armed Forces Radio in Salzburg, Austria. He also worked with the Swiss Short Wave Service communications Union in Geneva.

Also a member of Sigma Delta Chi, professional journalism fraternity, he has been adviser to Eta Chapter. Reliable information has it that he is now married and will take his wife overseas following a brief honeymoon in the U.S.

## **President Roberts Guest At Michigan**

Dean O. D. Roberts, National President, was the guest speaker at the annual alumni banquet of the University of Michigan held May 1 at Barton Hills Country Club, Ann Arbor, Michigan. O. D. spoke on fraternity problems.

The banquet was open to all fraternity alumni, and special invitations were sent to corporation and fraternity officers. While in Ann Arbor Dean Roberts met with the Kappa Delta Rho alumni relative to the fraternity situation at the University of Michigan, former home of Mu Chapter.

## **Vice-president**

Hal B. Cook, Indiana '40, is now vice-president and director of sales of Warner Bros. Records, Inc. of 666 Fifth Ave., New York. Brother Hal was formerly with Columbia Records of New York.

## **Retired**

Almer J. Snider, New York State Teachers 1924, retired as a teacher in the Irvington (N. J.) High School commercial department on June 30, 1957 after 37 years of teaching. Thirty-two of them were in Irvington. A. J. is now enjoying his retirement at 91 Midland Blvd., Maplewood, N. J.

## **Puts Up Shingle**

Rafael L. Franco Garcia, Gettysburg '51, is presently engaged in private law practice at Ponce de Leon 1663, Stop 24, Santurce, Puerto Rico. Any KDR's traveling his way are invited to stop in for legal advice—or just to chat.

## *George Eby, Penn State, '34. Honored for Charity Work*

George W. Eby, Penn State '34, was honored at a testimonial luncheon in the Penn-Sheraton Hotel, Pittsburgh, Pa. on June 16 following his return from London where he was elected International Chief Barker of Variety International during its recent convention.

Known as "the heart of show business", Variety was formed in Pittsburgh 30 years ago to give a chance in life to a baby girl who was abandoned in the Sheridan Square Theater. Since then there are 46 Tents (chapters) with Pittsburgh having Variety's No. 1.

George is a certified public accountant, treasurer of the Harris Amusement Companies and also treasurer of the Ice Capades. He is credited with spearheading the successful Roselia Foundling Home drive, the main project of Pittsburgh's Variety Club. The new Roselia hospital was opened in 1956.

After graduating from Penn State George joined Main & Co. and became a CPA in 1939. Having handled several audits of the Harris Amusement Companies, he was persuaded by Mr. Harris to join the staff. In 1940 George became controller of the expanding Harris enterprises. He still maintains his own CPA office in addition to his positions in the Harris chain.

Brother Eby has been active in charity work since he joined the showman's organization in 1940. He was elected chief barker for Tent No. 1 in 1949. His new honor as international barker brings credit not only on him but on the chapter in Pittsburgh where he has done most of his charity work.

We salute another KDR for service to humanity. It is in such a mold that a true KDR shows his mettle.

---

## *Gottshall, Chairman of the Board*

Ralph K. Gottshall, Lafayette '27, has been elected chairman of the board of Atlas Powder Company according to an announcement by the company in July. Ralph will also continue as president of the company.

Brother Gottshall joined Atlas as a chemist in 1927 after receiving his bachelor's degree in chemistry, magna cum laude. He changed to sales work after eight years of production and supervisory experience at Atlas explosives plants, becoming director of explosives sales in 1943 and assistant general manager of the explosives division in 1948. He was elected vice-president in 1951, executive

vice-president in 1952 and president in 1953.

At Lafayette he is vice-president and a life member of the Board of Trustees. He formerly served as president of the alumni association.

---

## *Zellerbach President*

Peter T. Sinclair, Oregon State '28, is now president and chief executive officer of Crown Zellerbach of Canada, Limited, of Vancouver, British Columbia. He was with the same corporation in West Linn, Oregon before his promotion and transfer to Canada.

# *Many Serve Their Country*

---

## **At Fort Knox**

Pvt. William H. Stevenson, Penn State '57, completed eight weeks of basic combat training February 15 at the Army's Armor Training Center, Fort Knox, Ky.

Bill's wife lives at 317 Cesino Ave., Cranford, N. J.

## **Kansas Bound**

Pvt. Daniel R. Olejniczak, Franklin '57 and former consul of his chapter, recently was assigned to Headquarters Detachment of the U. S. Army Garrison, Fort Riley, Kansas.

Dan, who works in the library, entered the Army in August 1957 and received basic training at Fort Carson, Colo. He was last stationed at Fort Lee, Va.

The 23-year-old soldier was formerly employed by Roach Appleton Manufacturing Company.

## **In Korea**

Pvt. Frank D. Christensen, Oregon State '57, recently arrived in Korea and is now a member of I Corps.

A radio teletype operator in the signal section of the Corps' Headquarters, Frank entered the Army last August and completed basic training at Fort Ord, Calif. He completed the radio teletype operation course at the Army's Southeastern School, Fort Gordon, Ga.

## **Physical Director**

Henry "Hank" Van Zanten, Lycoming '58, has accepted a position as physical director of the Y.M.C.A. in Jamestown, N. Y. He assumed his new duties July 1. Hank was active in sports in Psi Chapter and also was a member of various varsity squads at Lycoming College during his four-year course.

## **Finishes Course**

Pvt. Daniel R. Olejniczak, Franklin '57, recently was graduated from the eight-week general supply specialist course at the Army's Quarter-master School, Fort Lee, Va.

Olejniczak entered the army in August 1957 and received basic training at Fort Carson, Colo.

## **German Exercises**

Army Specialist Third Class Alvin L. Grisby, Delta '54, recently participated in a month-long field training exercise conducted by the 3rd Armored Division near Grafenwohr, Germany.

Specialist Grisby, a fire team leader in Company B of the division's 52nd Infantry in Friedberg, entered the Army in October 1956 and received basic training at Fort Hood, Texas. He arrived in Europe in May 1957. He attended Harvard University after graduating from Colgate.

## **Completes Training**

Pvt. James H. Marchbank, Colby '57, recently completed eight weeks of basic combat training under the Reserve Forces Act program at Fort Knox, Ky.

## **New Manager**

John Y. Mohler, Colgate '32, is manager of the new W. T. Grant Company store in Eastland Shopping Center, West Covina, Calif.

## **In Public Relations**

Wayne E. Conery, Eta '55, is assistant director of public relations for the professional schools (medicine, dentistry, pharmacy) and the Research and Education Hospitals of the University of Illinois with offices in Chicago. Wife Lynn is assistant personnel manager for IBM in River Forest, Ill. Home is in Berwyn, Ill.

# Franco's Spain or After Franco... What?

*(The author, Beta '15, recently returned from a trip to Spain, where he was very much impressed with some of the conditions he found there. Consultant for the Better Housing League of Cincinnati, he has done much for that city in planning for the future. He was also very much interested in housing in Spain and its effect on the population. We think you will find his comments as interesting as we did.)*

The Editor.

by Bleecker Marquette

It is still Franco's Spain but his hold on the country is waning. Wage earners, victims of the lowest wage rate in Europe and constantly mounting prices, are restive. Tenant farmers and inhabitants of the almost primitive villages are discontented with their lot. The small middle class objects to the role favoritism plays in almost everything the state controls from getting a government job to renting an apartment. They are annoyed too because Franco refuses to name a successor, thus keeping the country in a constant state of apprehension.

The big worry of the Spanish next to the creeping inflation is "After Franco What?" In a plebiscite a few years ago, the voters approved a return of the monarchy. Knowledgeable people say, however, that this did not represent the real feeling of the people. Spain really does have an active monarchist party, however, in fact two of them, the Royalists and the Carlists. Just two months ago they had a conclave in Portugal, presumably to speed up the selection of a king. What Franco wants, of course, is a monarch who can

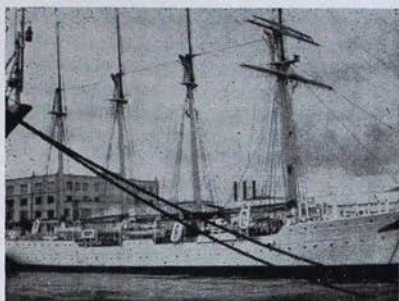
be manipulated by the Falangist party. His choice is Don Juan Carlos, grandson of the late king, Alfonso XIII, and he is now having the young man educated for the post. The monarchist parties seem to be agreed on him too. However the fly in the ointment is that the father, Don Juan, doesn't seem quite ready to give up his claim to the throne. While we were in the Canaries, blond, attractive Don Juan Carlos came into Las Palmas on the naval training ship. We had a good look at him as he sat with the other cadets enjoying folk dances arranged for their benefit in the Pueblo Canario (village square).

No one knows at this juncture which one if either will be king,



DON JUAN CARLOS

or what is more important who will succeed Franco as head of the government. The only guess we heard was that it might be a man high up in the labor move-



Training Ship of Don Juan

ment—no name mentioned, for obvious reasons. What makes people so concerned is the possibility of an all-out fight for power when Franco steps down and possibly even another civil war. The nation literally went through hell during the terrible years from 1936 to 1939 and Spaniards almost to a man would prefer anything to a repetition of that.

The perplexity of the people is illustrated by this story. A habitué of a particular cafe came in one evening and announced to his cronies; "I hear that the Caudillo is ready to step down". There was a ripple of approval but it was soon followed by looks of concern, and the query; "Yes, but who is going to take his place?" The answer was "the Generalísimo, they say." "Muy bien", all agreed and settled down again to their cognacs and coffee.

Actually the traveler in Spain is not too aware of Franco. About the only place he sees the Dictator's picture is on the postage stamps or in historic buildings. Except perhaps for the civil guards along every highway, there isn't much that smacks of the police state. Citizens can say what they please about the government without any risk, provided they don't become too violent. What the tourist doesn't see is the ironclad censorship of everything said in public meetings and in the press. No leaflet criticizing the state can be printed. Anyone who wants to ad-

dress a meeting has to indicate what he is going to say in advance and a representative of the government is on hand to see that he does not "get off the reservation".

The mounting discontent with social and economic conditions is causing Franco real concern. About two years ago the government ordered an across the board wage increase of about 25%, but prices had gone up 30% so that the working people were no better off. This worried the Falange leaders who feared that the Caudillo might lose his power completely. There was a big shakeup in the government departments. A new group pledged to hold inflation in check was installed. The results to date have not been impressive.

Spain has labor unions, called "sindicatos obreros". They have very little power and are not labor unions in our sense. In fact until recently they had no part in negotiations as to wages and hours. The Falange pretty well controls them.

The Falange is of course Franco's party and for a time was all powerful. Now it has passed its heyday. Its members do not necessarily reveal their identity but it is known that their numbers are dwindling and that they are not getting many new recruits. The Falange may be down but it is far from out. Almost every city has its Falange newspaper. The party is allotted substantial representation in the Cortes, Spain's parliament. Its influence is not to be discounted.

Economically, Spain's situation has not been good for many years. It was made much worse by the frightful devastation caused by Civil War and the loss of gold almost all of which was taken out of the country by the Republicans and carried to Mexico and to Russia at the end of the war. Wages are almost unbelievably low. In



### **New Housing In Franco's Spain Is Behind Schedule.**

Madrid maids get \$5.00 a month; hotel clerks and grocery clerks \$20 to \$30: In Seville a skilled worker in a ceramics factory earns \$2.00 a day. In the Canaries a dock worker's daily wage is 60 cents and a laborer's 54 cents. School teachers have to hold other jobs to supplement their paltry \$20.00 a month salaries. Hence the saying in Spain: "poor as a school teacher."

Industrial development has been slow. This is true too of agricultural methods. The old wooden plow is still in use although mechanization is now in process.

There is a sizeable job to be done in education. There aren't enough schools or teachers. Many children still get little if any schooling. The nation needs more of almost everything except people. Even milk for children is in short supply.

Still the picture is by no means all dark. Progress has been made.

There are comprehensive programs for new schools, roads, housing and hospitals. Unfortunately, lack of materials and machinery prevents the country from keeping up with its time schedules, but it is making a valiant effort. One can't help wishing these Spanish well, for a more courteous, vivacious, and likable people would be hard to find. Incidentally they are among the handsomest people in Europe and the Madrillenos among the best groomed.

We often hear it said the countries that receive our aid are ungrateful. It may be so of some, but it is certainly not true of the Spanish. They appreciate what we have done and they like Americans better than any other foreigners. Still they are a proud people, fully aware of their past greatness, and deeply resentful of an attitude of condescension and any belittling of their country. The traveler in Spain would do well to bear that in mind.

---

## **Have you changed your address?**

**Send us your new one immediately**

Name .....Chapter .....

Address .....

City .....State .....

Old Address .....

**MAIL TO QUILL & SCROLL, R. D. 2, Stockton, N. J.**

## ACROSS THE EDITOR'S DESK

### FAREWELL

The time has come to say Farewell.

Little did your editor suspect 14 years ago when he volunteered to help out in the crucial War years that he would still be here in 1958 as editor of *The Quill and Scroll*. When he volunteered to the late Jack Boyd, then national president, he was accepted so fast it made his head whirl, but with help from a few interested alumni, enough news was gathered, very often after considerable correspondence, to get out four issues a year.

Now it is time to step down and let a younger man take over the job of reporting the important events of KDR. I leave to him the job of wrestling with the many problems of production and editing that must be solved to get your magazine to you.

One thing stands out over the years, the modesty of most KDR's. When your editor thought he had a stunning story about the achievements of some successful member modesty prevented a full story in many cases because he preferred 'not to have his picture printed' or was so downright modest that he just failed to give the full story by mail. After 14 years I attest to the modesty of our members.

One crowning satisfaction will remain as long as I live: the many wonderful men in

KDR that I have come to know both by correspondence and in person. Hundreds of members have been hounded by letter, telegram, and phone for stories to grace the pages of your magazine. No matter how high they had climbed in the business world, or what recognition they had achieved in the scientific or educational world they were always friendly and gracious. I hope I can count them not only as brothers in KDR but friends.

It has often been a difficult job, ferreting out stories from afar, and sometimes adding details that were modestly omitted from the information sent in, but it has been a rewarding job over the years. One gets used to the critical letter from one who disagrees with you on some controversial subject, but the letters of commendation outweighed those over the years. It was good to hear that chapters profited from articles on rushing or alumni relations or that some alumnus was pleased to hear that a classmate was doing so well.

What have I said? Nothing, except to say that I appreciate the help of the many busy KDR's who took time out from earning a living to send in news to *The Quill and Scroll*. I treasure the many friendships that I have built up in the past 14 years, and hope that some day I

may meet some of my correspondents face to face to give them the KDR grip and thank them for the help they gave in keeping your magazine alive.

I say Farewell with a heavy heart for I will miss all the accomplishments of KDR's who do things and don't want them told to an eager fraternity world, but most of all I will miss the contacts with men whom I have come to regard as real fraternity brothers and warm friends.

---

## Working Dad Through College

If you've wondered whether it costs more to send a daughter or a son to college, the U.S. Office of Education has come up with the answer: the girls cost more! That's because male students earn more in addition to the money they get from Dad. Actually, girls spend less money at college, but Dad's cost per daughter runs about 12% higher. Dad may find some comfort—while working his way through the bills—in the fact that the cost of college education itself is comparatively small. It is the cost of living at college which consumes five-sixths of the average budget of students.

The U.S. Office of Education also finds 'heartening news concerning individual initiative among students'. Three-fifths work while they learn; and most take their

studies seriously and not as a lark at Dad's expense. There is one other factor. The father of a co-ed may spend 12% more on her education; but the average male student, as the Wall Street Journal notes, 'has the burden of paying for dates' while the co-ed 'possibly to attract the male's recreation money' spends more on clothes.

N.B. We already have reserved space in 'Voice of the People' for those co-eds who will tell us how they not only go 'Dutch' but lend money to the boys. But we won't tell Dad; he might want to borrow some, too.

---

## What Is Pledge Training?

What is the purpose of pledge training? It boils down to one simple sentence: To teach a new member to become a good active—not a good pledge.

Has a member when he leaves your fraternity (whether it is after one semester or four years), has he learned something which has made him a better person? Has your fraternity taught him social poise and etiquette? — the kind that is used every day, all day, and not the kind that is used on Friday and Saturday nights? Has your fraternity taught him the meaning of the word 'Honor' — a word that is employed in almost all of your rituals?

These are the things you can sell; and these are the things a new student and the new type of student, will buy.

HOWARD G. NEUBERG

(From an address given at  
Greek Week Banquet, Illinois.)

---

## Chapter Nuptial

### Basil — Pfister

Charles "Chuck" Basil, Franklin '61, and Miss Ninette Pfister of Seymour, Indiana were married

in the Church of God, Seymour, on June 9. The couple will live in Franklin while Chuck finishes his college career.

## Krise — Martin

Lawrence Krise, Franklin '60, took the big step with Miss Janyth Martin of Young America, Indiana at the First Baptist Church of Young America on June 21. Larry and his wife Janny will live in Franklin while he finishes school.

## Stohl — Johnson

Donald L. Stohl, Penn State '53, and Miss Kaye Roberts Johnson of Irwin, Pa. were married in the Calvary Baptist Church, Irwin on May 10. A reception was held at the Irwin Country Club.

Don is assistant expansion director and served last spring as expansion secretary for the spring term. He was instrumental in organizing Epsilon Omega Alpha at Lock Haven, the local becoming Alpha Alpha Chapter. He is employed in Pittsburgh.

## Dennis — Parker

Gordon R. Dennis, Cornell '53, and Miss Mary Alison Parker were married on May 17th in the Afton Presbyterian Church, Afton, N. Y. A reception followed the ceremony.

Gordon is now serving as alternate director on the national Board of Directors. The Dennis' will make their home at 4212 Alendorf Drive, Cincinnati 9, Ohio.

## Maberry - Pierce

The Rev. Barron B. Maberry, Gettysburg '55, and Miss Audrey Nadine Pierce of Baltimore were married on June 1, 1957 at the Lutheran Theological Seminary in Gettysburg. After living in Gettysburg during Barry's last year in Seminary they have settled 20 miles from Baltimore where Barry is pastor of the Upperco Lutheran Parish, Upperco, Md.

# Chapter Eternal

## Dana L. Edwards

### Zeta '26

Dana LaRue Edwards, Penn State '26, died at his home in Wilkes-Barre, Pa. on September 28, 1954. He was in the insurance business in the Luzerne County seat.

A native of Pikes Creek, Pa., Brother Edwards was born on February 21, 1904. Graduating from Berwick, (Pa.) High School in 1922, he entered Penn State and graduated from the school of Commerce and Finance in 1926. He had been in the insurance field the past 32 years.

## Luther M. Bingaman

### Pi '27

Luther M. Bingaman, Gettysburg '27, died at his home in Mifflinburg, Pa. in January 1957. He was a high school physics teacher.

## RICHARD W. WAGNER

### IOTA '29

Richard W. Wagner, Bucknell '28, died in Lewisburg, Pa. on May 11 at the age of 50. He was a postal employee in Lewisburg for many years.

Services were held in the Sacred Heart Chapel, Lewisburg, on Wed. May 14. Many local KDR's paid their respects to a departed brother.

## Donald B. Cloward

### Iota '19

Dr. Donald B. Cloward, Bucknell '19, a member of the Forum local from which Iota chapter emerged, died in White Plains on September 18, 1956.

Brother Cloward entered the service in 1917 to serve in World War I and then re-entered Bucknell upon his discharge. He was a Baptist minister in White Plains for many years prior to his decease.

## Clifford A. Hill

### Zeta '23

Clifford A. Hill, Penn State '23, died in Pompano Beach, Florida on May 30, 1958 where he lived for three years following his retirement as treasurer of Dravo Corporation, Pittsburgh. He formerly lived in Mt. Lebanon, a suburb of Pittsburgh.

He was born in Titusville, Pa. and after graduation from Penn State became associated with the Dravo Corporation. He became a director of the Union Barge Line Corporation, the Southern Transfer Company and the Fullerton-Portsmouth Bridge Company.

He was past president of the Pittsburgh Chapter, Controllers Institute of America and a member of the American Institute of Accountants, the Pennsylvania Institute of Certified Public Accountants, Pittsburgh Chamber of Commerce, Phi Kappa Phi and Delta Sigma Pi.

His wife, a daughter and two grand-children survive.

## DIRECTORY

### KAPPA DELTA RHO FRATERNITY

Founded at Middlebury in the spring of 1905, by \*George E. Kimball, Gino A. Ratti, Chester W. Walch, Irving T. Coates, \*John Beecher, Thomas H. Bartley, \*Benjamin E. Farr, \*Pierce W. Darrow, Gideon R. Norton and Roy D. Wood.  
\*Deceased.

#### OFFICERS and DIRECTORS

Pres.—O. D. Roberts (1962)  
Dean of Men  
Purdue University  
West Lafayette, Ind.

Vice. Pres.—Frederic T. Closs (1962)  
402 Mansfield St.  
Belvidere, N. J.

Treas.—Floyd R. Baughman (1962)  
c/o Bristol-Myers  
630 Fifth Ave.  
New York 20, N. Y.

Asst. Treas.—Robert D. Corrie  
156 Oak St.  
West Hempstead, N. Y.

#### DIRECTORS

Oliver E. Harris (1958)  
Lymhurst, R. D.  
Williamsport, Pa.

E. Mayer Maloney (1960)  
335 South Jordan Ave.  
Bloomington, Ind.

Merle W. Garing (1960)  
2561 Carlsbrook Drive  
Oakland, Calif.

George E. Shaw (1960)  
Scarswold Apts.—3D  
Scarsdale, N. Y.

Roland I. Gammon (1958)  
244 Riverside Drive  
New York, N. Y.

Joseph P. Porter (1958)  
144 Linn St.  
Ithaca, N. Y.

#### ALTERNATE DIRECTORS

John Hoben (1958)  
Hamilton, N. Y.

Kenneth C. Kramer (1958)  
Box 851  
State College, Pa.

Gordon R. Dennis (1958)  
257 Gilman Ave.  
Cincinnati 19, Ohio

#### RITUAL COMMITTEE

Fred T. Closs  
Walter E. Garman, Sr.

#### SCHOLARSHIP ADVISER

John Hoben  
Hamilton, N. Y.

#### EXPANSION COMMITTEE

Frederic T. Closs, Chairman  
402 Mansfield St.  
Belvidere, N. J.

Don Stohl, Ass't Chairman  
11 S. Third St.  
Youngwood, Pa.

#### EXECUTIVE SECRETARY

Donald C. Wolfe  
R. D. 2  
Stockton, N. J.

#### EXPANSION SECRETARY

Jack Morgart  
R. D. 1  
New Paris, Pa.

#### ASST SECRETARY—WEST COAST

Merle W. Garing  
2561 Carlsbrook Drive  
Oakland, Calif.

#### LEGAL ADVISERS

Orrin G. Judd  
New York 21, N. Y.  
655 Madison Ave.

Leo T. Wolford  
501 So. Second St.  
Louisville 2, Ky.

#### NATIONAL HISTORIAN

George E. Shaw  
Scarswold Apts.—3D  
Scarsdale, N. Y.

#### NATIONAL CHAPLAIN

The Very Rev. Harold F. Lemoine  
87 Fifth Ave.  
Garden City, N. Y.

# KAP ALUMNI and ACTIVES

## Order Your Jewelry Direct from This Page KAPPA DELTA RHO Official Badge Price List

### REGULATIONS

Crown Set Whole Pearl Delta	\$ 15.00
Crown Set Whole Pearl Delta, Garnet Points	15.00
Crown Set Whole Pearl Delta, Ruby Points	16.50
Crown Set Whole Pearl Delta, Diamond Points	35.00
Crown Set Whole Pearl Delta, Diamond Points, Diamond in Center of Delta	40.00
Crown Set Whole Pearl Delta, Ruby Points, Diamond in Center of Delta	25.00
Crown Set Whole Pearl Delta, Ruby Points, Ruby in Center of Delta	18.50
Full Diamond Delta	85.00
Full Diamond Delta with Diamond in Center of Delta	95.00

### GUARD PIN PRICES

	Single Letter	Double Letter
Plain	\$ 2.75	\$ 4.25
Crown Set Pearl	7.75	14.00

### COAT-OF-ARMS GUARDS

Miniature, Yellow Gold	\$ 2.75
Scarf Size, Yellow Gold	3.25

### SISTER PINS

Crown Set Whole Pearl Delta, Garnet Points	\$ 11.00
Crown Set Whole Pearl Delta, Ruby Points	12.00
Crown Set Whole Pearl Delta, Ruby Points, Ruby Center of Delta	13.00
Crown Set Diamond Delta	60.00
Crown Set Diamond Delta Diamond Center	70.00

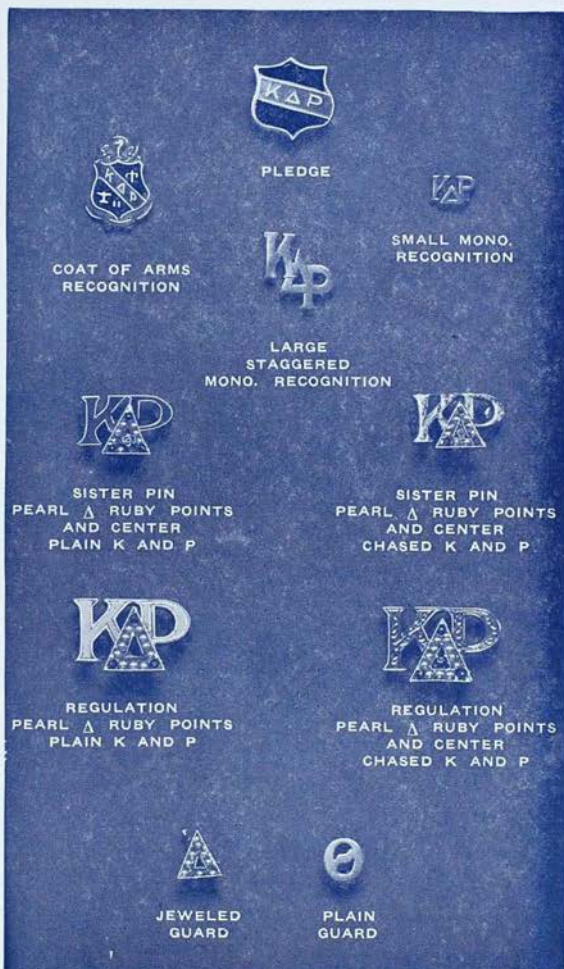
Chased Kappa and Rho, Regulation Badge	\$1.50 extra
Sister Pin	1.00 extra
White Gold Badges	\$ 3.00 additional
Platinum	20.00 additional
Pledge Buttons, doz.	\$ 9.00

Recognition Buttons	
Small Monogrammed Gold Filled, each	1.00
Large Monogrammed Gold Filled, each	1.50
Miniature Coat-of-arms, Gold, each	1.00
Miniature Coat-of-arms, Silver, each	.75

Jeweled badges may be engraved at no extra charge, providing a deposit of at least one-third of total amount accompanies the order. Instructions for engraving should be clearly printed. Check all names and dates carefully.

Proper official release must accompany your order to avoid delay in delivery.

Be sure to mention the name of your Chapter when ordering a guard for your pin.



ALL PRICES ARE SUBJECT TO 10% FEDERAL EXCISE TAX AND TO STATE SALES OR USE TAXES WHEREVER SUCH STATE TAXES ARE IN EFFECT.

## BURR, PATTERSON & AULD CO.

Send for Your FREE Personal Copy of "The Gift Parade"

PUBLISHED EXCLUSIVELY BY YOUR OFFICIAL JEWELERS

ROOSEVELT PARK

DETROIT 16, MICHIGAN

America's Oldest—and Most Progressive—Fraternity Jewelers

## CHAPTER DIRECTORY

**Alpha**—Middlebury College  
Reginald L. Cook, Adviser  
F. W. Johnson, Consul  
Hilton Bicknell, Propraetor  
48 South Street  
Middlebury, Vermont

**Beta**—Cornell University  
Alan W. Riddiford, Consul  
Richard Newman, Propraetor  
312 Highland Ave.  
Ithaca, N. Y.

**Delta**—Colgate University  
John Hoben, Adviser  
William White, Consul  
Norman Whitten, Propraetor  
Hamilton, N. Y.

**Epsilon**—Franklin College  
Dr. Clifford Murphy  
Donald Merriott, Consul  
Richard F. Gordon, Propraetor  
801 East Jefferson Street  
Franklin, Ind.

**Zeta**—Pennsylvania State University  
Ralph Wherry, Adviser  
James A. Morgart, Consul  
Henry C. Faller, Propraetor  
420 East Prospect Ave.  
State College, Pa.

**Eta**—University of Illinois  
Howard Neuberg, Adviser  
Robert Sullivan, Consul  
Fred Roland, Propraetor  
1110 South Second St.  
Champaign, Ill.

**Theta**—Purdue University  
Richard Ramhap, Adviser  
Gerald A. Swedeen, Consul  
Jon I. Fellers, Propraetor  
1134 Northwestern Ave.  
West Lafayette, Ind.

**Iota**—Bucknell University  
Mickey Pickell, Consul  
Bob Muzik, Propraetor  
120 South Sixth Street  
Lewisburg, Pa.

**Kappa**—Ohio State University  
Frank Koval, Adviser  
Kenneth E. Hoeltzel, Consul  
Ronald C. Hanck, Propraetor  
1985 Waldeck Ave.  
Columbus, Ohio

**Lambda**—University of Calif.  
Robert Harrigan, Adviser  
Robert Nash, Consul  
Jack Howes, Propraetor  
2250 Piedmont Ave.  
Berkeley 4, Calif.

**Nu**—Indiana University  
Claude T. Rich, Adviser  
Jim Koehlinger, Consul  
Don Schroeder, Propraetor  
814 East Third Street  
Bloomington, Ind.

**Xi**—Colby College  
Ralph S. Williams, Adviser  
Larry LaPointe, Consul  
Bob Huss, Propraetor  
Waterville, Maine

**Pi**—Gettysburg College  
Dr. Chas. A. Sloat, Adviser  
Ken Shockley, Consul  
William Pusch, Propraetor  
225 West Lincoln, Ave.  
Gettysburg, Pa.

**Rho**—Lafayette College  
William S. McLean, Adviser  
Joseph Zazzara, Consul  
Donald Straub, Propraetor  
Easton, Pa.

**Sigma**—Oregon State College  
G. Morris Robertson, Adviser  
Monroe Bevans, Consul  
Jim Robinson, Propraetor  
140 North 23rd Street  
Corvallis, Oreg.

**Psi**—Lycoming College  
Dr. Robert Rabold, Adviser  
Donald W. Habel, Consul  
L. William Price, Propraetor  
140 Bennett Street  
Williamsport, Pa.

**Omega**—Indiana State Teachers College  
William Farrell, Consul  
James H. McConnell, Propraetor  
1070 Grant Street  
Indiana, Pa.

**Alpha Alpha Colony**—Lock Haven State  
Teachers College  
Franklin McIlvaine, Adviser  
Larry Moran, Consul  
George Boone, Propraetor  
428 W. Water St.  
Lock Haven, Pa.

**Kappa Delta Rho Fraternity**  
**R. D. 2, STOCKTON, N. J.**

**Entered as Second Class Matter**  
**at the Post Office at Easton, Pa.**

**Return POSTAGE GUARANTEED**