

The Quill and Scroll

of the

KAPPA DELTA RHO
FRATERNITY

FALL
1957

Fraternities are Good

I believe that college fraternities serve an important and valuable function on the nation's campuses. In the main, they have helped thousands of college students develop into better American citizens.

*Benjamin Fine, Alpha Epsilon Pi
Education Director—New York Times*



Member of the National
Interfraternity Conference

Not Asking Much

Dear Don:

Here comes my annual contribution to the KDR Loyalty Fund.

Surely as national president, Mr. Roberts is not asking much when he says in his note to the alumni: "You can find at least a spare dollar to give toward a bigger and better Kappa Delta Rho. May we hear from you—all 7000 strong."

Best wishes,
Charlie Sanders, Iota '13

A Mother Helps

Dear Folks:

I read your literature before sending it on to our son, Robert Holm, who is one of your alumni members (Upsilon '52).

He is an engineer now stationed at Douglas Plant at Patrick Air Force Base in Florida. He undoubtedly will be sending his response to your issue as Robert was very proud of his fraternity.

Please accept the small enclosed check from me to further help your work for your fine fraternity.

Sincerely yours,

Mrs. L. A. Holm

To KDR Parents

If your son is still in school his magazine is sent to his home address. We are thrilled to hear that so many parents are reading it; we hope that we may continue to have you as readers for many years.

Please do not try to forward your son's magazine without the proper postage on it; it is simply returned to the KDR headquarters. Forwarding postage is usually 2c but if in doubt consult your post office. Or just hold the magazine until your son comes home on vacation. Thank you.

The Quill and Scroll



Official Publication
of

Kappa Delta Rho Fraternity

VOL. LXIII SEPTEMBER, 1957 No. 3

In This Issue

Outstanding Seniors	2
Loyalty Fund	7
Xi Wins	8
New Colony	10
Scholarship 1956	11
Crossroads	12
Chapter Eternal	15
Directory	16

The Cover — Many KDR's have stood at this most unique signpost on Wake Island. (See story on page 12.)

Don C. Wolfe—EDITOR

Circulation this issue6700

Entry as second-class matter at the post office at Easton, Pa.
PUBLICATION OFFICE—535
Northampton Street, Easton, Pa.

Published four times a year in
February, May, September and
November.

EDITORIAL AND BUSINESS
OFFICE: R. D. 2, Stockton, N. J.
Subscriptions are available only to
life members at \$10.00 each.

Notice of change of address should be given at least 30 days before date of issue. Give old as well as new address. Address all correspondence and contributions to the editorial office, R. D. 2, Stockton, N. J. Pictures will be returned upon request.

Introducing . . .

Outstanding seniors of 1957

For the first time in the history of Kappa Delta Rho, the Quill and Scroll proudly presents the outstanding seniors in the class of 1957. Each represents, in the opinion of his chapter, the KDR member who has done the most for his fraternity.

Last spring we asked each chapter to vote, without nominations or the usual fanfare of elections, on the senior who they felt had done the most for Kappa Delta Rho on its campus. Twelve of the chapters sent in their results. These we proudly present to all of KDR as the outstanding seniors of 1957.

It will be noted that those doing the most for their fraternity also did a notable job for their college. Lists of campus activities in many cases were quite long and necessitated editing. In all cases if any were omitted it was the least important in the editor's opinion. We tried to include all important honors and honorary fraternities.

One side-light on the chapter voting appears in the inclusion of two seniors from Eta Chapter. A tie vote resulted on the first ballot; two subsequent ballots failed to break the tie so we have included both candidates in our honor list.

Five chapters failed to send in the results of their voting. It is our hope that every chapter in KDR will be represented when we next present the seniors who have done the most for Kappa Delta Rho.

The Quill and Scroll salutes the members of the class of 1957 who have done the most for Kappa Delta Rho.



NU — INDIANA

KENT ARVIN

Course—B.S. in Business.

Home town—Indianapolis.

Campus activities—Chief justice, Student Supreme Court; Business manager, 1957 Arbutus; Blue Key (vice-president), YMCA Cabinet, Treasurer junior class, Director sophomore class, Skull and Crescent, treasurer; Secretary, Organized party; Phi Eta Sigma, Delta Sigma Pi, One of 10 outstanding senior men selected by Sigma Delta Chi, Journalism honorary; State merit scholarship.

Chapter activities—Consul, Senior tribune, Custodian, Scholarship chairman, Alumni secretary, IFC representative, Pledge class president.

IOTA — BUCKNELL

ROBERT D. BAUMAN

Course—A.B. in Mathematics.

Home town—Catonsville, Md.

Campus activities—Bucknellian (weekly), photographer; L'Agenda (yearbook), photographer; Inter-fraternity Council representative, ROTC-Cadet captain (Officers' club), Men's Glee club, WVBU, Announcer and engineer; Disc jockey.

Chapter activities—Pledge-of-the-year, Custodian, Centurion, Proprietor, Senior tribune, Consul, Headed active drive for new house.



SIGMA — OREGON STATE

WILLIAM ABEL

Course—Agriculture.

Home town—Astoria, Oreg.

Campus activities—Crew hospitality committee, IFC representative, Men's chorus, Senior weekend committee, Personnel managers assoc. (president), International Farm Youth Exchange delegate to Argentina, Delegate, National 4-H Club Congress; King, Associated Women Students Corral.

Chapter activities—Intramural manager, Song leader, Study chairman, Custodian, Senior tribune, Consul.

BETA — CORNELL

BURLYE B. POUNCEY

Course—Electrical engineering.

Home town—Englewood, N. J. (now Houston, Texas).

Campus activities—IFC committees, Engineers' Day committee (open house, College of Engineering), Delta club (EE social club), Advanced ROTC (Cadet Major), Distinguished Military student award, Brigadier General Hospital award, Eta Kappa Nu, Tau Beta Pi, IFC badminton champion (with Ted Cotton), (Won trophy for KDR in 1956).

Chapter activities—Rush chairman, Quaestor, Senior tribune.





OMEGA — INDIANA STATE

JOHN DEE VARNER

Course—A.B. in secondary education.

Home town—Indiana, Pa.

Campus activities—Student council (president), College finance committee, Oak committee, Junior Chamber of Commerce, ROTC Drum and Bugle Corps, Wrestling team, Soccer team.

Chapter activities—Charter member, Delta Gamma Tau, Proprietor, Advisory committee, Consul, KDR local quartet, Chairman, Eastern Regional Conference, 1956.

LAMBDA — CALIFORNIA

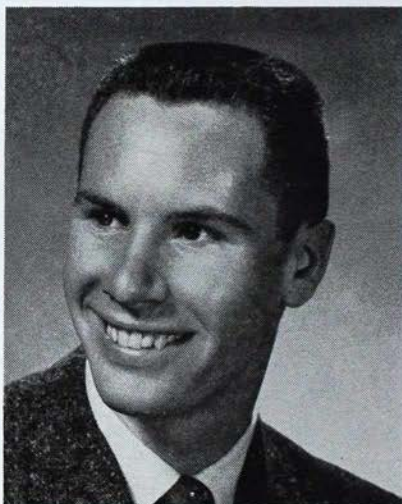
JOHN W. LARSEN

Course—A.B. in Chemistry.

Home town—Berkeley, Calif.

Campus activities — Y. M. C. A., Naval ROTC, ROTC Honor Society.

Chapter activities—Junior tribune, Adviser, Scholarship chairman, Consul, Delegate, 1956 National convention, By-law revision committee.



DELTA — COLGATE

BILL WIER

Course—A.B. in Philosophy.

Home town—Wilmington, Del.

Campus activities—Editorial Board, Calliper Magazine, Marching Band, Philosophy Club (Pres.), Maroon Key (Junior activities society), Konosone (Senior activities society), Mu Pi Delta, Pi Delta Epsilon, Phi Beta Kappa.

Chapter activities—Senior senator, Treasurer.



ETA — ILLINOIS

NORBERT SARGENT

Course—General agriculture.

Home town—Berwyn, Ill.

Campus activities—Wrestling squad (letter 2, 3, 4), Tribe of Illini (Varsity club), ROTC, Lt. Col., Battalion commander, Distinguished military award, Military council, Phalanx (National Commander, 4,) Infantry special drill team, George Huff certificate for proficiency in scholarship and athletics, Agriculture club, Delta Zeta Dream man, 1957.

Chapter activities—Pledge training committee (3 years), Executive committee, Pontifex, Pledgemaster, Custodian, Delegate, National convention, 1956.



ETA — ILLINOIS

STANLEY W. WOODS, JR.

Course—Civil engineering.

Home town—Roxana, Ill.

Campus activities—Freshman track, Varsity cross country, Varsity track, Phalanx, Advanced ROTC, ASCE, KDR representative to McKinley Foundation (Presbyterian).

Chapter activities—Custodian, Senior tribune, Consul, Intra-mural horse-shoe champion.

EPSILON — FRANKLIN

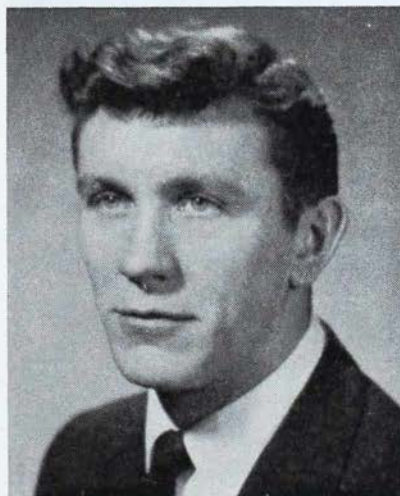
DAN OLEJNICZAK

Course—A.B. in English.

Home town—South Bend, Indiana.

Campus activities—Young Democrats (treas.), Dramatic Club (vice-president), Interfraternity Council (vice-president), Theta Alpha Phi (president), Chairman Junior prom, Chairman Greek Week dance, Chairman Homecoming dance, Co-writer and producer Bianca (musical comedy).

Chapter activities—Custodian, Song leader, Recording secretary, Senior tribune, Consul, Awarded chapter plaque for fraternity leadership.





ZETA — PENN STATE

DAVID Z. RICHARDS

Course—Mechanical Engineering.

Home Town—Selinsgrove, Pa.

Campus Activities — Business Mgr., Daily Collegian, Parmi Nour Hat Society, Cadet Major in Arnold Air Society, Air Force Honorary Society, Cadet Lt. Col.—Air ROTC, Spring week coronation and business committees, Campus political party—vice-president, Publicity chairman—Greek Week, Campus Chest dorm coordinator, Interfraternity Council Safety Committee, American Society of Mechanical Engineers, Distinguished military cadet of 1957, Omicron Delta Kappa (scholastic and leadership honorary), Phi Eta Sigma, Pi Tau Sigma, Tau Beta Pi.

Chapter activities—Consul.

RHO — LAFAYETTE

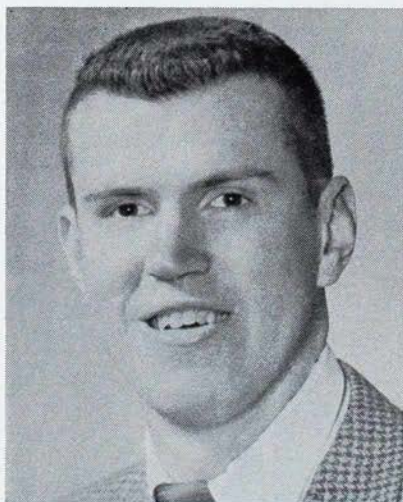
JOHN S. PARSONS

Course—B.S. in Business Administration.

Home town—Pittsburgh, Pa.

Campus activities—Football squad, Interfraternity council, Fraternity council.

Chapter activities—Consul.



XI — COLBY

ALLEN D. MacLEAN

Course—A.B. in Government.

Home town—Rockport, Mass.

Campus activities — Student Christian Association (Treas. and vice-president), Cosmopolitan club, French club, International Relations club, Young Republican club (Treas.), Assistant scoutmaster, Organist, Waterville church.

Chapter activities — Pontifex, Praetor, Student government representative, Ping-pong and volley-ball teams, House pianist.

Have You? Why Not Now!

Have you used your summer issue of *The Quill and Scroll*? Did you know it was meant for use and not just decoration?

Inserted in it was an envelope to use in sending in your contribution to the 1957 Loyalty Fund. Several hundred alumni have availed themselves of this easy method of helping the activities of their fraternity meet the budget of today's rising expenses.

If you have mislaid the summer issue of your magazine you can still contribute by just mailing your check to:

Loyalty Fund
Kappa Delta Rho
RD #2, Stockton, N. J.

In answer to several inquiries a fuller explanation of the uses of the Loyalty Fund is in order.

PLACED IN GENERAL FUND

Your contribution to the Loyalty Fund is placed in the general fund of Kappa Delta Rho. The budget is made up from anticipated income to the general fund; therefore, your contribution goes to help meet the budget for the fiscal year.

WHERE HELP IS NEEDED

One area where financial help is needed most from the alumni is in meeting the cost of *The Quill and Scroll*. Theoretically, the Trust Fund was set up to yield enough income to publish the fraternity magazine. Practically, the interest has not kept up with the rise in the costs of publication and distribution so that approximately \$1500 a year has to come from the general fund to meet the publication expenses of the magazine.

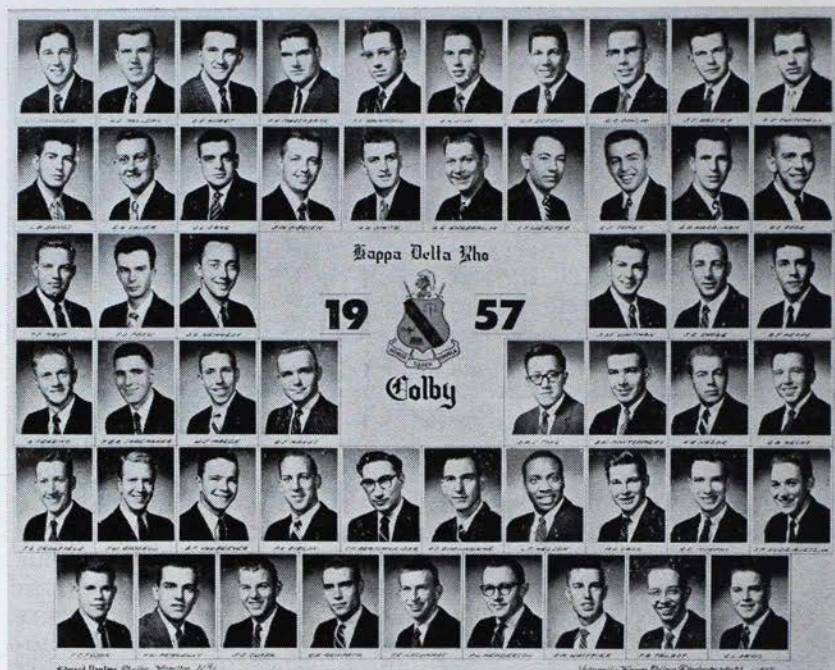
This is not primarily an expense of the undergraduates, and their dues should not go to pay for an alumni magazine. Since the magazine goes to some 6000 alumni it costs the general fund 25c each per year above the yield of the Trust Fund just to publish and mail a magazine.

If each alumnus in KDR were to contribute just 25c a year toward his magazine we would just break even. Since many do not, other generous members make it up, with some donating as much as \$50 to the Loyalty Fund. It is easy to see from this that unless the contributions average more than 25c for every alumnus in KDR nothing actually remains for use in some other area of activity.

THERE IS MORE NEED

Kappa Delta Rho has embarked upon a program of expansion, designed to bring in more chapters in an expanding college cycle. Many alumni have written since the last issue of *The Quill and Scroll* evincing an interest in such a program. It takes money, to visit a campus, investigate local groups who might be interested in going national, helping such groups through a period of pledgeship into that of a full-fledged chapter.

Your contribution is the answer to your approval of such a program. But until we average more than 25c an alumnus little remains to put into an expansion program. Is it asking too much to expect an alumnus to spare a dollar (\$1) toward such a program? Brother, won't you think it over—and then ACT.



Xi Wins First Annual Award To Outstanding Chapter of KDR

by Don Stohl

For the first time in the history of Kappa Delta Rho the question of the most outstanding chapter has been settled. At the National Convention, held at Middlebury, Vermont, in August of 1956, a standing committee was selected to devise a system that would not only find the outstanding chapter, but bring the chapters closer together and give added interest in the National itself.

Trying to originate a new program such as this, is not always perfect at its beginning but with time, the small complications should be eliminated. Any suggestions from the chapters will be appreciated by the committee.

Xi chapter has been named the Outstanding Chapter of Kappa Delta Rho Fraternity, for the year of 1957. Alpha Chapter, receiving the next highest number of

points out of a possible 60, placed second, while Zeta Chapter was third. To complete the Top Ten, Lambda placed fourth; Epsilon fifth; Psi sixth; Delta seventh; Omega eighth, Beta ninth; and Rho tenth.

The program was divided into six main categories; Alumni Relations, Community Relations, Pledge Training, House Activities, Athletics, and Individual Activities. Scholarship was also taken into consideration, along with many other points.

The five chapters placing the highest in the above named categories are shown in the following list:

Five Top Chapters in Alumni Relations

- | | |
|-----------|------------|
| 1. Xi | 3. Beta |
| 2. Lambda | 4. Epsilon |
| | 5. Rho |

**Five Top Chapters
in Community Relations**

1. Epsilon
2. Lambda
3. Xi
4. Alpha
5. Psi

**Five Top Chapters
in Pledge Training**

1. Xi
2. Lambda
3. Omega
4. Zeta
5. Epsilon

**Five Top Chapters
in House Activities**

1. Xi
2. Sigma
3. Lambda
4. Zeta
5. Alpha

**Five Top Chapters
in Athletics**

1. Zeta
2. Psi
3. Alpha
4. Xi
5. Delta

**Five Top Chapters
in Individual Activities**

1. Xi
2. Delta
3. Zeta
4. Alpha
5. Omega and Beta (Tie)

Dr. Crosen Resigns; Now in Iran

Dr. Robert G. Crosen, Rho Honorary, has resigned as Scholarship adviser and member of the Board of Directors to take a teaching position at the new Abadan Institute of Technology in Iran. He assumed his duties the beginning of September when he and Mrs. Crosen left for Iran.

Brother Crosen has been granted a two-year leave of absence from Lafayette to travel, study and teach abroad. He had been dean of the faculty for eleven years prior to the time when he made his decision to leave administration work and return to teaching.

He has been very active nationally in Kappa Delta Rho. Besides being an active adviser of Rho chapter he became a member of

the Board, serving as scholarship adviser for three years and president for two years during his tenure on the Board. His term of office would have run out in 1958.

Oliver E. Harris, Penn State '37, was elected by the Convention in August to fill the unexpired term of Brother Crosen. Oliver is now director of admissions at Lycoming College in Williamsport, and was the adviser to Psi Colony when it was installed in 1953.

John Hoben, a member of the faculty at Colgate University, and an alternate member of the Board, has been named to succeed Crosen as Scholarship Adviser. He will have charge of all the national scholarship records of the fraternity.

Have You Changed Your Address?

Send us your new one immediately

Name Chapter

Address

City State

Old Address

MAIL TO QUILL & SCROLL, R.D. 2, Stockton, N. J.

New Colony Approved At Lock Haven State Teachers College

A new colony has been added to the roster of Kappa Delta Rho. On October 19, 1957 Epsilon Omega Alpha local fraternity at Lock Haven State Teachers College, Lock Haven, Pa., received official status as Alpha Alpha colony from the expansion committee of the Board of Directors.

Organized April 30, 1957, Epsilon Omega Alpha has made great strides on the Lock Haven campus. After ratifying a set of by-laws before summer vacation they returned to school in September with a zeal that carried them to greater heights. With the administration solidly behind them they rented a house close to the campus and set to work begging, borrowing or buying enough furniture to equip it. This month they moved in and by January 1st they expect to be completely furnished and re-decorated. Sixteen of the membership will live in the house.

Thirty-one members comprise the present roster of the colony. Four of the original group graduated last June, making an alumni membership of four. Present president of the colony is James A. Murphy, Jr. of Glassport, Pa. Chapter adviser is Prof. Franklin McIlvaine of the college faculty.

Qualification standards will be set up for the group and when they are met plans will be completed for installation. The expansion committee hopes for a spring installation.

More Expansion

The expansion committee hopes that within a short time several other groups will join Epsilon Omega Alpha as colonies. Negotiations are under way with groups in Pennsylvania and Illinois, and petitions for colonyship are expected from at least two more groups soon. The executive secre-



JAMES A. MURPHY, JR.

tary has had inquiries from groups in New Hampshire, New York and Oregon, where fraternity facilities are being increased due to expanding enrollment.

The newly-formed Cleveland Alumni Association is expected to take an active part in expansion in Northern Ohio and other individuals and associations have indicated their desire to help.

Alumni in the vicinity of Lock Haven are urged to extend greetings to the new colony by dropping into their new house for a visit. The colony travelled to Penn State on November 17 to meet with the brothers of Zeta and observe a fraternity in action. They want the alumni to visit them too and will welcome all visitors to Lock Haven.

At age 20 we don't care what the world thinks of us; at 30 we begin to worry about what it thinks of us; at 50 we find it wasn't thinking of us at all.

—Case Alumnus

Scholarship Record for 1955-1956.
Colgate Wins Again in High Ranking:
Bucknell Wins for Greatest Improvement

<i>Chapter</i>	<i>Rank and Average 1953-54</i>	<i>Rank and Average 1954-55</i>	<i>Rank and Average 1955-56</i>	<i>Increase or Decrease in Over previous year</i>
Alpha Middlebury	3rd in 8 + 0.64	2nd in 8 + 4.07	2nd in 8 + 5.17	+ 1.10
Beta Cornell	No record	5th in 50 + 6.18	10th in 49 + 3.49	- 2.69
Delta Colgate	1st in 14 + 13.95	2nd in 14 + 9.75	1st in 13 + 17.11	1st in rank + 7.36
Epsilon Franklin College	1st in 4 - 2.42	2nd in 4 + 0.18	2nd in 4 - 3.16	- 3.34
Zeta Penn State	38th in 42 - 6.47	36th in 42 - 6.55	34th in 43 - 6.63	- 0.08
Eta Illinois	38th in 50 - 10.39	23rd in 50 - 5.67	44th in 51 - 15.06	- 9.39
Theta Purdue	23rd in 36 - 3.31	18th in 36 - 1.76	18th in 36 - 2.82	- 1.06
Iota Bucknell	12th in 12 - 20.00	12th in 12 - 21.02	11th in 12 - 8.44	1st in Improve- ment + 12.58
Kappa Ohio State	36th in 40 - 11.43	38th in 40 - 12.75	39th in 40 - 19.76	- 7.01
Lambda University of Calif.			31st in 42 - 7.27	
Nu Indiana		15th in 27 - 3.81	6th in 27 + 5.47	+ 9.28
Xi Colby	5th in 8 + 4.96	4th in 8 + 4.58	4th in 8 + .58	- 4.00
Pi Gettysburg	12th in 12 - 14.30	11th in 12 - 10.61	11th in 12 - 13.23	- 2.62
Rho Lafayette	6th in 19 + 1.92	3rd in 14 + 3.40	13th in 19 - 6.79	- 10.19
Sigma Oregon State	22nd in 30 - 6.76	25th in 30 - 11.11	27th in 30 - 13.19	- 2.08
Indiana State Teachers			3rd in 5 - 3.60	
Psi Lycoming		4th in 4***	No data available	

Wake Island . . .

Crossroads of the Pacific

by NORMAN J. CARMICHAEL
Lambda '49



Wake Island is not a miserable rock in a remote corner of the Pacific. Nor is it a lush tropical dreamland awaiting the touch of some smart promoter to become a challenge to Hawaii as Paradise of the Pacific. It is neither of these, but, during a nine-month tour there as an employee for PAN AMERICAN WORLD AIRWAYS, I found Wake to be an enjoyable experience in tropical, coral-atoll, living.

To the KDRs who may have transited Wake Island as passengers during the post-WW II years, the rather dreary, king-size, quonset hut which serves as a terminal building has been the only face of the island visible. A coral atoll has many faces, few of which are visible to the transit visitor. In the shallow depths of the shimmering green lagoon, deep in the velvet blue waters off the ocean reef, along the miles of coral beaches, and faces with the ever-changing make-up of dramatic tropical skies.

For Panam, as for other trans-Pacific airlines, and for the routes of the military air services, Wake is simply a large gas station on

As a Transocean DC4 taxis in, a PamAm Clipper is being serviced en-route to Japan. At the right, a MATS cargo transport.

the aerial highway to the Far East. The island is under the jurisdiction of the U.S. Navy but it is administered, locally, by the U.S. Civil Aeronautics Administration. The C.A.A. operates and maintains the airport facilities. Operation of the radar navigation installation and maintenance of the air-sea rescue squadron is the regular duty of the U.S. Coast Guard detachment. Mid-Pacific Operations, a Standard subsidiary, oper-



Rusting Japanese guns still guard Wake beaches.

ates all of the fueling facilities for Wake, an extensive network of storage tanks, underground pipelines, and pumps at each aircraft parking spot. Brother Nelson's TRANSOCEAN AIR LINES, provides handling, maintenance, and billeting service for the U.S. Air Force and the Military Air Transport Service besides their own trans-Pacific flights.

Wake is supplied both by air and by sea. The bulk of goods arrive via monthly tankers and freighters. With modern storage facilities for frozen foods, P.A.A. is able to keep it's dining room and flight kitchen supplied with a variety of fresh foods normal to the average household in the U.S. By air, milk, fruits, and other perishables arrive from Honolulu, 3000 miles away. Employees each have a free monthly shipping allowance for the receipt of special items for personal use they may find unavailable on the island. And for anyone who thinks his laundry is far away, the bulk of PAA's goes by air, 1800 miles west to Guam for washing and ironing.

The resident population of Wake is about 700. There are, of course, a couple of hundred more crew members in transit at all times resting for the next leg of their trips. The 45 school-age children of the various families living there attend a two-room country-style school. A doctor and two nurses staff the small modern hospital operated by the C.A.A. without charge to the island's residents.

What to do with spare time is no problem. Aquatic activities predominate, naturally. The reefs encircling Wake abound in fish of all sizes, shapes, and, especially, color. For the fisherman, be he surf angler, speargun enthusiast, or deep-sea, game-fish, sportsman, there is almost no limit to the variety of locations and quarry for the novice or expert. Skin divers are in a genuine paradise



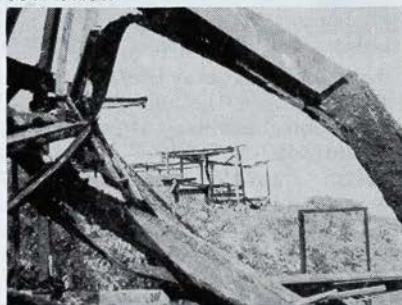
Wake Island—crossroads of the Pacific.

which offers miles of reef and lagoon for exploration and sight-seeing. Tank, snorkel, and swim-fins abound as a minor hazard to the sailors, another group to whom the lagoon is home. There, hardly a day passes free of a sailboat of some sort, the variety running from sailfish (an overgrown surf board with keel and sail) to the twin-hulled catamaran owned by the PAA employees' club. The power fans spend their time on water skis zooming around the others on the calm water. Skiing is probably the most popular of sports among the local populace with all the equipment provided free from the employees' recreation fund. There is also tennis, basketball, volleyball, a darkroom, a club with the latest magazines and newspapers from the Coast, a golf driving range and, finally, the Low Tide Country Club, a

coral golf course partly submerged at high tide.

Families at Wake have a pleasant relaxed life with comfortable modern homes. The active youth spends hours swimming or floating around the lagoon on rafts, roaming the beaches and exploring the miles of trenches and relics of war days. Social life is unpressured and informal. The nightly movies are free and not much older than late-hour TV.

Vacations, every six months, usually mean a trip to Manila, Tokyo, or Hong Kong. The shopping center is actually the shops and bazaars of Singapore, Honolulu, or Japan with delivery service provided by cooperative flight crew members. And life is frequently made interesting with glimpses of transiting celebrities: Chief Justice Warren, the President of Vietnam, Jane Russell, Charles Lindberg, Bill Holden, and popular artists of all the Asian countries.



Twisted and rusting, the uncompleted frames of large buildings stand as a monument to "too little and too late". Eleven hundred construction workers were captured by the Japanese in 1941. The extensive Marine and Navy base, had it been finished and manned, might well have changed the course of the early days of the Pacific War.

I'll probably return. Memories of relaxing tropical days on a breeze-swept lanai, cold drink and good book in hand, of twilight beach parties, blazing sunrises, and moonlight swims, all of these form a picture in my mind of life at its pleasantest, of life on Wake Island, mid-Pacific.

Audio-Visual Director

Donald P. Ely, Gamma '51, is now associate director of the audio-visual center at Syracuse University. He was a delegate to the national convention in Berkeley in 1950.

Since graduating he has been visiting lecturer in audio-visual education at the University of Buffalo, assistant professor and director of audio-visual education at New Paltz State Teachers College and director of audio-visual education in Hicksville, New York. He has also served as president of the New York State Audio-Visual Council, co-chairman of the national committee on Buildings and Equipment of the National Education Association and Educational consultant of the Weston Woods Studios.

He is author of several articles published in various educational journals.

IN TOURNAMENT

First Lt. Gary A. Lindell, Oregon State '55, played in the Fifth Army basketball tournament at Fort Riley, Kan., with the Fort Carson, Colo., post team last season.

Lieutenant Lindell is regularly assigned as athletic and recreation officer with the 9th Division Artillery's headquarters at the Colorado fort.

Costs Going Up

Beginning July 1, your Fraternity has had to pay five cents for each copy of **THE QUILL AND SCROLL** returned without a correct address for delivery.

If we don't have your correct address you won't get your magazine, Kappa Delta Rho will pay five cents to have it returned and further time and money will be spent trying to find where you are located.

Save your fraternity this money by mailing in the Change of Address coupon found elsewhere in this copy of your magazine. Or just mail your new address on a two-cent postal card or a post office change of address card, furnished upon request by any post office.

May we have your correct address, please. Your next issue will come to your new address.

Chapter Eternal

Charles G. Seelbach Beta '19

Charles G. Seelbach, Cornell '19, died at his home in Buffalo, N. Y., on July 26, 1956 at the age of 60. He was in the fur business in Buffalo. He was a former director of the Century Orchestra of Buffalo.

He was initiated into KDR in November 1915. A letter man at Cornell in cross-country, he was elected life secretary-treasurer of his class in his senior year.

His wife, the former Marcia Grimes, (Cornell '18) and one son, Charles W. Seelbach, survive. Walter J. Seelbach, Cornell '25, is a brother.

Stanley F. Schenck Epsilon '22

Stanley F. Schenck, Franklin '22 and a charter member of that chapter, died in 1956 at the age of 59 at his home in Goshen, Indiana. He was chairman of the science and mathematics departments of the Goshen public schools.

A graduate of the Columbus (Ind.) public schools, he was a member of Phi Alpha Pi local at Franklin College when it was installed as Epsilon chapter on May 24, 1919.

Arthur T. Brush Alpha '29

Arthur Twitchell Brush, Middlebury '29, died some time during 1953, according to information received in *The Quill and Scroll* office. He was an editor of the *Manchester Union - Leader*. Manchester, N. H.

Born in St. Albans, Vt. October 14, 1908 he graduated from the high school in 1925. He was initiated on February 20, 1926 and graduated from Middlebury with a B.S. degree. He has been associated with the fourth estate since his high school days.

William Wilkerson Kappa '22

William Wilkerson, Ohio State '22, is reported deceased at his home in Osborn, Ohio on May 17, 1957. No details are available.

Brother Wilkerson was one of the charter members of Kappa Chapter.

Bernard A. Leonard Alpha '13

Bernard Arthur Leonard, Middlebury '13, died at his home in Northboro, Mass., August 3, 1955. He was 67 years old.

A native of Wallingford, Vermont, he attended Vermont Academy and Wallingford High School before going to Middlebury. He was active in the educational field following his graduation, becoming the Dean of Men at Washington State Normal School at Ellensburg, Wash. He had retired shortly before his death.

Charles F. Reilly Gamma '23

Charles F. Reilly, New York State Teachers '23, is reported deceased in May 1951 according to the records of the college alumni association. No further information is available.

Walter R. Barkley Theta '23

Walter R. Barkley, Purdue '23, and a charter member of his chapter, died of a heart attack at his home in Birmingham, Mich., on March 10, 1957. He was 61 years old.

A native of Parker, S. D., he graduated as a mechanical engineer. For many years before taking a similar position in Michigan he was engineer for the Utah Power & Light Co. in Salt Lake City.

Richard J. Race Xi '29

Richard J. Race, Colby '29, died on July 20, 1957 at Dover-Foxcroft hospital where he had been taken following a coronary attack at his camp on Sylvan Lake. He was 51 years old and a charter member of Xi Chapter.

A native of Guilford, Maine, he graduated from Guilford High School, Colby College and received his master's degree at the University of Vermont. He was a teacher at Foxcroft Academy at the time of his death. Previously he had been principal of North Danville, Vt., High School and supervising principal of Underhill, Vt., High School.

His wife, the former Otelia Rogers, survives.

Neil H. Williams Mu Hon.

Prof. Neil H. Williams, professor of Physics at the University of Michigan, is reported deceased by the post office department. No details are available.

DIRECTORY

KAPPA DELTA RHO FRATERNITY

Founded at Middlebury in the spring of 1905, by *George E. Kimball, Gino A. Ratti, Chester W. Walch, Irving T. Coates, *John Beecher, Thomas H. Bartley, *Benjamin E. Farr, *Pierce W. Darrow, Glendon R. Norton and Roy D. Wood.
*Deceased.

OFFICERS and DIRECTORS

Pres.—O. D. Roberts (1962)
Dean of Men
Purdue University
West Lafayette, Ind.

Vice. Pres.—Frederic T. Closs (1962)
402 Mansfield St.
Belvidere, N. J.

Treas.—Floyd R. Baughman (1962)
c/o Bristol-Myers
630 Fifth Ave.
New York 20, N. Y.

DIRECTORS

Oliver E. Harris (1958)
Lymhurst, R. D.
Williamsport, Pa.

E. Mayer Maloney (1960)
335 South Jordan Ave.
Bloomington, Ind.

Merle W. Garing (1960)
2561 Carisbrook Drive
Oakland, Calif.

George E. Shaw (1960)
220 Broadway
New York 38, N. Y.

Roland I. Gammon (1958)
244 Riverside Drive
New York, N. Y.

Joseph P. Porter (1958)
124 E. Court St.
Ithaca, N. Y.

ALTERNATE DIRECTORS

John Hoben (1958)
Hamilton, N. Y.

Kenneth C. Kramer (1958)
Box 851
State College, Pa.

Gordon R. Dennis (1958)
257 Gilman Ave.
Cincinnati 19, Ohio

RITUAL COMMITTEE

Fred T. Closs
Walter E. Garman, Sr.

SCHOLARSHIP ADVISER

John Hoben
Hamilton, N. Y.

EXPANSION COMMITTEE

Frederic T. Closs, Chairman
402 Mansfield St.
Belvidere, N. J.

Don Stohl, Ass't Chairman
11 S. Third St.
Youngwood, Pa.

EXECUTIVE SECRETARY

Donald C. Wolfe
R. D. 2
Stockton, N. J.

ASS'T SECRETARY—WEST COAST

Merle W. Garing
2561 Carisbrook Drive
Oakland, Calif.

LEGAL ADVISERS

Orrin G. Judd
New York 21, N. Y.
655 Madison Ave.

Leo T. Wolford
501 So. Second St.
Louisville 2, Ky.

NATIONAL HISTORIAN

George E. Shaw
220 Broadway
New York 38, N. Y.

NATIONAL CHAPLAIN

The Very Rev. Harold F. Lemoine
87 Fifth Ave.
Garden City, N. Y.

KAP ALUMNI and ACTIVES

Order Your Jewelry Direct from This Page

KAPPA DELTA RHO

Official Badge Price List

REGULATIONS

Crown Set Whole Pearl Delta	\$ 15.00
Crown Set Whole Pearl Delta, Garnet Points	15.00
Crown Set Whole Pearl Delta, Ruby Points	16.50
Crown Set Whole Pearl Delta, Diamond Points	35.00
Crown Set Whole Pearl Delta, Diamond Points, Diamond in Center of Delta	40.00
Crown Set Whole Pearl Delta, Ruby Points, Diamond in Center of Delta	25.00
Crown Set Whole Pearl Delta, Ruby Points, Ruby in Center of Delta	18.50
Full Diamond Delta	85.00
Full Diamond Delta with Diamond in Center of Delta ..	95.00

GUARD PIN PRICES

	Single Letter	Double Letter
Plain	\$ 2.75	\$ 4.25
Crown Set Pearl	7.75	14.00

COAT-OF-ARMS GUARDS

Miniature, Yellow Gold	\$ 2.75
Scarf Size, Yellow Gold	3.25

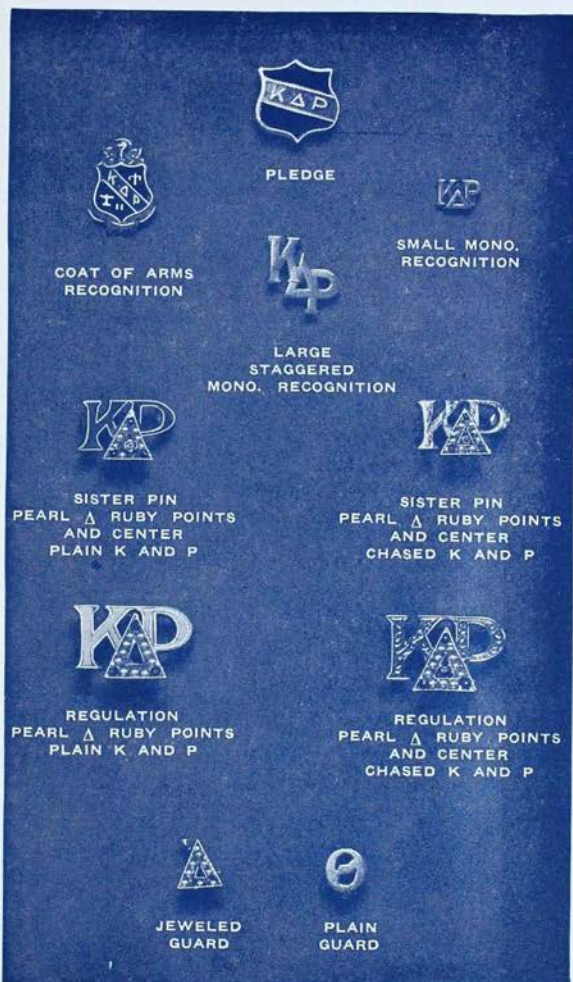
SISTER PINS

Crown Set Whole Pearl Delta, Garnet Points	\$ 11.00
Crown Set Whole Pearl Delta, Ruby Points	12.00
Crown Set Whole Pearl Delta, Ruby Points, Ruby Center of Delta	13.00
Crown Set Diamond Delta ..	60.00
Crown Set Diamond Delta Diamond Center	70.00
Chased Kappa and Rho, Regulation Badge	\$1.50 extra
Sister Pin	1.00 extra
White Gold Badges ..	\$ 3.00 additional
Platinum	20.00 additional
Pledge Buttons, doz.	\$ 9.00
Recognition Buttons	
Small Monogrammed Gold Filled, each	1.00
Large Monogrammed Gold Filled, each	1.50
Miniature Coat-of-arms, Gold, each	1.00
Miniature Coat-of-arms, Silver, each75

Jeweled badges may be engraved at no extra charge, providing a deposit of at least one-third of total amount accompanies the order. Instructions for engraving should be clearly printed. Check all names and dates carefully.

Proper official release must accompany your order to avoid delay in delivery.

Be sure to mention the name of your Chapter when ordering a guard for your pin.



ALL PRICES ARE SUBJECT TO 10% FEDERAL EXCISE TAX AND TO STATE SALES OR USE TAXES WHEREVER SUCH STATE TAXES ARE IN EFFECT.

BURR, PATTERSON & AULD CO.

Send for Your FREE Personal Copy of "The Gift Parade"

PUBLISHED EXCLUSIVELY BY YOUR OFFICIAL JEWELERS

ROOSEVELT PARK

DETROIT 16, MICHIGAN

America's Oldest—and Most Progressive—Fraternity Jewelers

CHAPTER DIRECTORY

Alpha—Middlebury College
Reginald L. Cook, Adviser
F. W. Johnson, Consul
Hilton Bicknell, Propraetor
48 South Street
Middlebury, Vermont

Beta—Cornell University
Joseph P. Porter, Adviser
John Padgett, Consul
Bill Zwerman, Propraetor
312 Highland Ave.
Ithaca, N. Y.

Delta—Colgate University
John Hoben, Adviser
William Hieber, Consul
H. Allen Young, Propraetor
Hamilton, N. Y.

Epsilon—Franklin College
John F. Schrodt, Jr.
John Thurston, Consul
Jay Jackson, Propraetor
801 East Jefferson Street
Franklin, Ind.

Zeta—Pennsylvania State College
Ralph Wherry, Adviser
Dave Richards, Consul
Thomas W. Kinsey, Jr., Propraetor
420 East Prospect Ave.
State College, Pa.

Eta—University of Illinois
Howard Neuberg, Adviser
Stan Woods, Consul
Jack Hulson, Propraetor
1110 South Second St.
Champaign, Ill.

Theta—Purdue University
Richard Ramhapp, Adviser
Albert H. Neubauer, Consul
Robert K. Armstrong, Propraetor
1134 Northwestern Ave.
West Lafayette, Ind.

Iota—Bucknell University
Mickey Pickell, Consul
Bob Muzik, Propraetor
120 South Sixth Street
Lewisburg, Pa.

Kappa—Ohio State University
Floyd Stahl, Adviser
Ray Foster, Consul
Edward Helal, Propraetor
1985 Waldeck Ave.
Columbus, Ohio

Lambda—University of Calif.
Robert Harrigan, Adviser
John Larsen, Consul
Jack Howes, Propraetor
2250 Piedmont Ave.
Berkeley 4, Calif.

Nu—Indiana University
Claude T. Rich, Adviser
Jim Koehlinger, Consul
Don Schroeder, Propraetor
814 East Third Street
Bloomington, Ind.

Xi—Colby College
Ralph S. Williams, Adviser
Terrance Mayo, Consul
E. Raymond Dow, Propraetor
Waterville, Maine

Pi—Gettysburg College
Dr. Chas. A. Sloat, Adviser
Donald Stein, Consul
Wilbur MacIvor, Jr., Propraetor
225 West Lincoln, Ave.
Gettysburg, Pa.

Rho—Lafayette College
William S. McLean, Adviser
Joseph Zazzara, Consul
Donald Straub, Propraetor
Easton, Pa.

Sigma—Oregon State College
G. Morris Robertson, Adviser
Guinn James, Consul
James Goodrich, Propraetor
140 North 23rd Street
Corvallis, Oreg.

Psi—Lycoming College
Dr. Robert Rabold, Adviser
Don Bohensky, Consul
John Boettger, Propraetor
140 Bennett Street
Williamsport, Pa.

Omega—Indiana State Teachers College
John D. Varner, Consul
James H. McConnell, Propraetor
1070 Grant Street
Indiana, Pa.

Alpha Alpha Colony—Lock Haven State
Teachers College
James A. Murphy, Jr., Pres.
428 W. Water St.
Lock Haven, Pa.

Kappa Delta Rho Fraternity
R. D. 2, STOCKTON, N. J.

Return POSTAGE GUARANTEED

Entered as Second Class Matter
at the Post Office at Easton, Pa.