

---

# *The* Quill and Scroll

*of the*

KAPPA DELTA RHO  
FRATERNITY

Summer  
1951

# ATIONAL NTERFRATERNITY ONFERENCE

## FRATERNITY CRITERIA



WE CONSIDER THE FRATERNITY RESPONSIBLE FOR A POSITIVE CONTRIBUTION TO THE PRIMARY FUNCTIONS OF THE COLLEGES AND UNIVERSITIES, AND THEREFORE UNDER AN OBLIGATION TO ENCOURAGE THE MOST COMPLETE PERSONAL DEVELOPMENT OF ITS MEMBERS, INTELLECTUAL, PHYSICAL, AND SOCIAL. THEREFORE, WE DECLARE:

- I THAT THE OBJECTIVES AND ACTIVITIES OF THE FRATERNITY SHOULD BE IN ENTIRE ACCORD WITH THE AIMS AND PURPOSES OF THE INSTITUTIONS AT WHICH IT HAS CHAPTERS;
- II THAT THE PRIMARY LOYALTY AND RESPONSIBILITY OF A STUDENT IN HIS RELATIONS WITH HIS INSTITUTION ARE TO THE INSTITUTION, AND THAT THE ASSOCIATION OF ANY GROUP OF STUDENTS AS A CHAPTER OF A FRATERNITY INVOLVES THE DEFINITE RESPONSIBILITY OF THE GROUP FOR THE CONDUCT OF THE INDIVIDUAL;
- III THAT THE FRATERNITY SHOULD PROMOTE CONDUCT CONSISTENT WITH GOOD MORALS AND GOOD TASTE;
- IV THAT THE FRATERNITY SHOULD CREATE AN ATMOSPHERE WHICH WILL STIMULATE SUBSTANTIAL INTELLECTUAL PROGRESS AND SUPERIOR INTELLECTUAL ACHIEVEMENT;
- V THAT THE FRATERNITY SHOULD MAINTAIN SANITARY, SAFE, AND WHOLESOME PHYSICAL CONDITIONS IN THE CHAPTER HOUSE;
- VI THAT THE FRATERNITY SHOULD INCULCATE PRINCIPLES OF SOUND BUSINESS PRACTICE BOTH IN CHAPTER FINANCES AND IN THE BUSINESS RELATIONS OF ITS MEMBERS.



THESE CRITERIA SHOULD BE APPLIED IN CLOSE COOPERATION WITH THE ADMINISTRATIVE AUTHORITIES OF THE INSTITUTIONS. DETAILED METHODS OF APPLICATION WILL NECESSARILY VARY IN ACCORDANCE WITH LOCAL CONDITIONS. IT IS THE PURPOSE OF THE NATIONAL INTERFRATERNITY CONFERENCE TO OFFER DETAILED SUGGESTIONS, AFTER FURTHER STUDY AND INVESTIGATION, REGARDING PRACTICAL STEPS TO MAKE THIS COOPERATION EFFECTIVE.





MEMBER OF THE NATIONAL  
INTERFRATERNITY CONFERENCE

## The QUILL and SCROLL



Official Publication  
of  
Kappa Delta Rho Fraternity

---

Vol. XXXVII Summer 1951 No. 2

---

### FEATURED IN THIS ISSUE

Colony Grant at Lycoming	2
Ensinger Resigns	5
Student of All Trades	6
Eliminating Hell Week	8
Lafayette Elects	9
The Editor's Corner	10
Chapter Eternal	12
Loyalty Fund Contributors	14
Directory	16

COMING - The full story about the first Sweetheart of Kappa Delta Rho and how she missed being Miss America by an eyelash.

Don Wolfe - EDITOR

Circulation this issue - 5600

Entered as second-class matter  
at the post office at RAHWAY, N.J.

Publication office: 443 Grove Street, Rahway, N.J. Published quarterly at the above office of publication. Subscriptions are available only to life members at \$10.00 each.

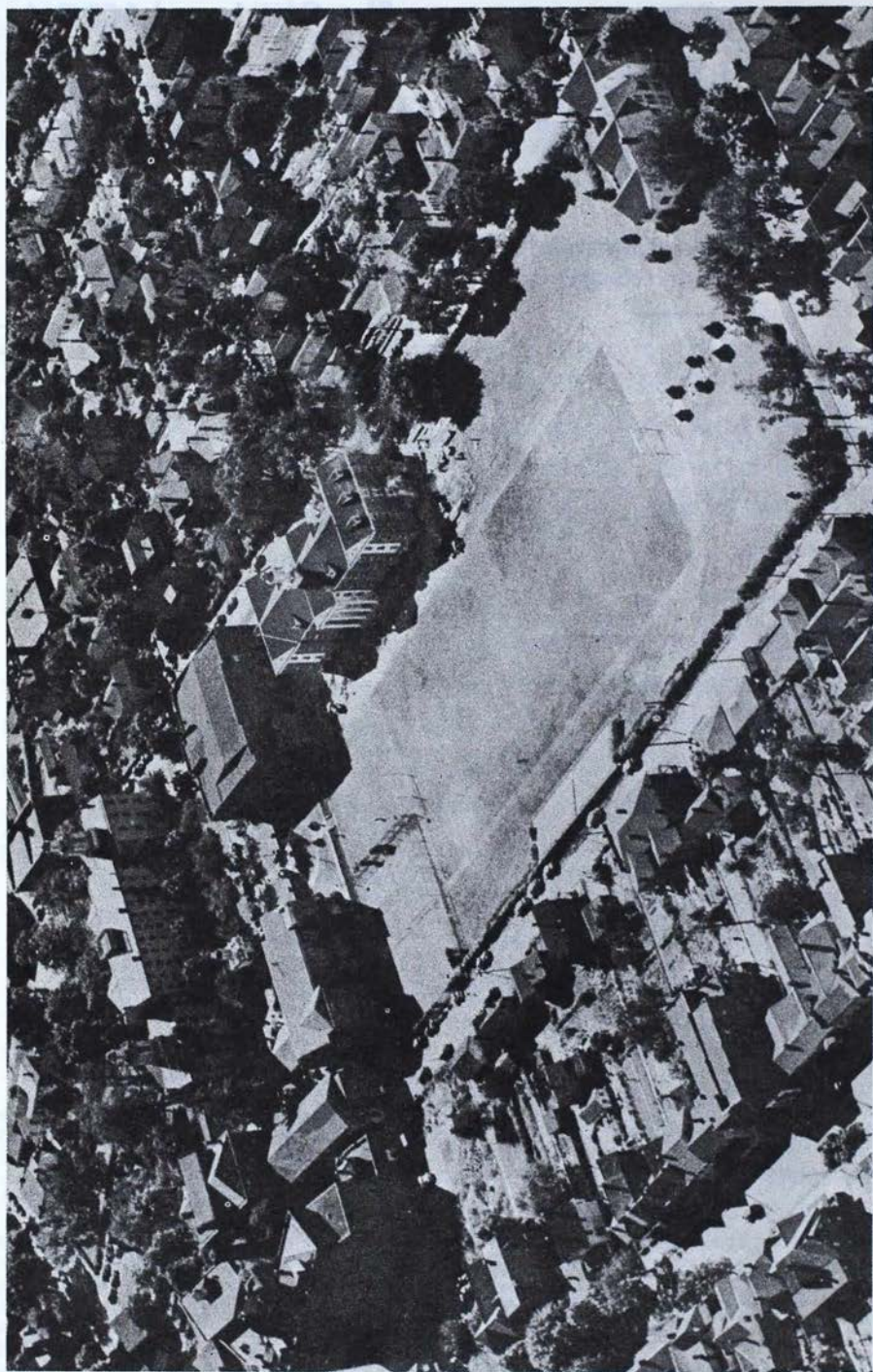
Notice of change of address should be given at least 30 days before date of issue. Give old as well as new address. Address all correspondence and contributions to the office of publication, 443 Grove Street, Rahway, N.J. Pictures will be returned upon request.

This issue is dedicated to the newest colony of Kappa Delta Rho, Psi Colony at Lycoming College.

It is our sincere hope that Psi Colony shall grow up to mature manhood in the chapters of KDR.

Iota and Zeta Chapters become sponsors with the realization that their task is made easier by the high calibre of the Colony and the educational aims of the institution it represents.

**THE FRONT COVER** - Center of the campus at Lycoming College in Williamsport, Pa. is the attractive spire of the college chapel, signifying that the spiritual life of the student is an integral part of his education.



Lycoming College Campus, Williamsport, Pa.



# *Colony Grant at Lycoming*

Theta Pi Pi Local,  
Founded In 1896,  
Becomes Psi Colony

Psi Colony of Kappa Delta Rho was established at co-educational Lycoming College, Williamsport, Pennsylvania, September 13, through a grant of colonyship by Grand President E. Mayer Maloney and acceptance of this grant by student Consul C. Scott Wilhelm. Psi marks the twentieth active undergraduate unit in the fraternity and the fifth in college-rich Pennsylvania. Zeta and Iota Chapters have been named co-sponsors of the new group.

The establishment of Psi came about through the conversion to colonyship in KAP of Theta Pi Pi, a local fraternity which since its founding in 1896 has been prominent on this north-central Pennsylvania Campus. Having written to former executive-secretary Ferd Ensinger last spring, representatives of the local met in August with Grand Extension Committee member Frederic T. Closs, and in this meeting the seeds for the new colony were sown.

Lycoming College, home of Psi, maintains a co-ed student population of about 500 and boasts founding roots dating back to 1812 when the Williamsport Academy was established to serve area education needs. After 135 years of academy, seminary, preparatory and junior college service under the auspices of the Methodist Church, Lycoming was re-organized as a four-year

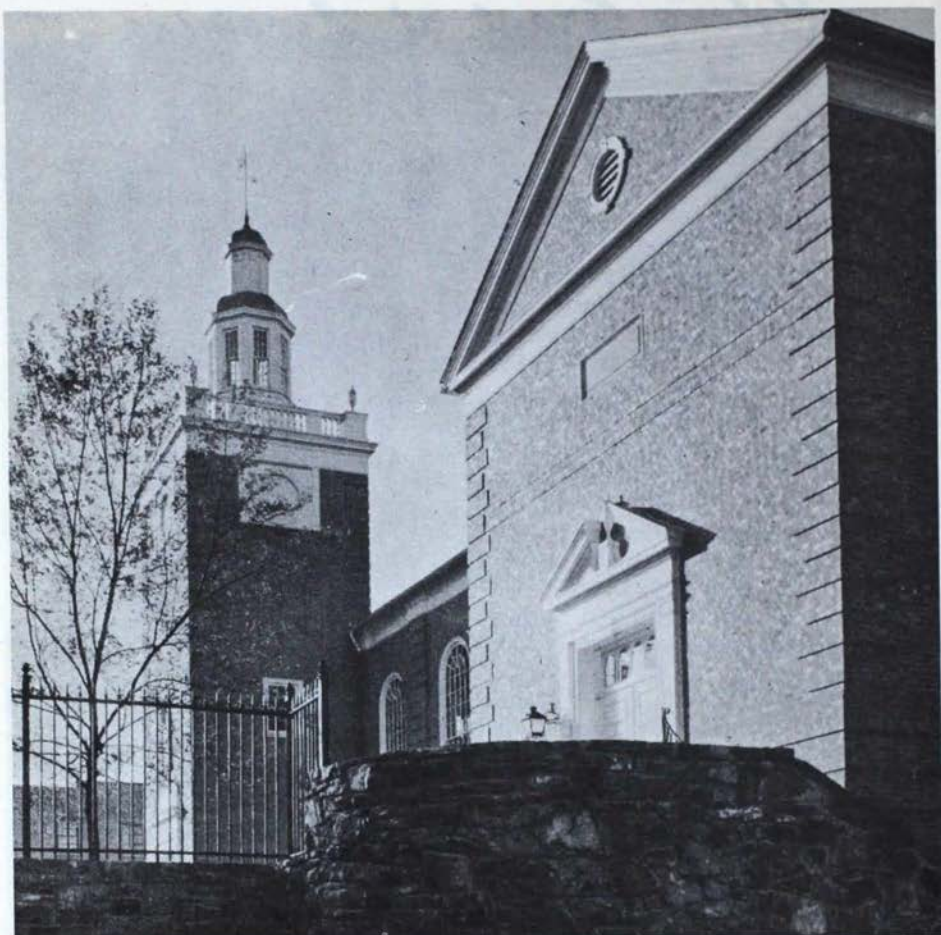


Dr. John W. Long, President

bachelor-degree-granting institution in 1947 and has graduated bachelor degree classes for the past three years.

Psi opens the fall semester with fifteen members, including Interfraternity Council President Paul A. Sabin, former prexy of the Theta Pi Pi local. Two other seniors, nine juniors, and three sophomores fill out the group, and according to enthusiastic reports from Consul Wilhelm the rushing goal for this fall is ten or more top men.

At present the Colony, which



Clarke Memorial Chapel, Lycoming College

as Theta Pi Pi listed over 800 alumni, is considering house-building plans in conjunction with the college, and through cooperation with Dean of Students G. H. Gramley and College President Dr. John W. Long considerable progress has been made in preliminary discussions. The college itself has recently finished a beautiful new library housing over 100,000 volumes, and the years since 1945 have seen a new women's dormitory and a new science building constructed and the renovation of Old Main - the original class-

room and dormitory structure - to contain administration offices.

Bob Matasick, '52, of Zeta and Jack Stamets, '52, of Iota are heading up sponsoring committees for the Williamsport colony in their respective chapters.

The Grand Chapter, the active chapters and the alumni of Kappa Delta Rho join in welcoming Psi Colony to the ranks of a great and meaningful national fraternity, and extend congratulations in the steadfast confidence that Psi Colony will soon become Psi Chapter.



# Executive-secretary Ensinger Resigns

## Closes Busy Career With KDR and NIC

One of the most illustrious careers of an executive-secretary of KAP came to a close on July 31 when Ferd Ensinger officially resigned to become an insurance underwriter. After five years of getting Kappa Delta Rho known on every campus where a chapter is situated he reluctantly retired from all active participation in fraternity and inter-fraternity affairs. He will stay on as adviser to those entrusted with the growth of the new chapters instituted under his term.

The last official meeting he attended as an executive-secretary was the summer meeting of the College Fraternity Secretaries Association at Wianno, June 27 to July 1. There he regretfully declined any active committee work by announcing his decision to retire as executive-secretary of KAP.

Brother Ensinger became executive-secretary in January 1946 when a hurried call went out to anyone interested in taking up the slack left in the ranks by another world war. He volunteered to take temporarily the almost impossible job of bringing back a KAP which had practically de-activated during hostilities. Few houses were open and those which were had but a scant nucleus to begin operations. Brother Ensinger met the challenge by frequent trips to chapters needing urgent aid.

By contacting alumni and holding conferences with actives returning to college he built up an esprit de corps which carried many chapters over a crucial point in their history. Numerous contacts with interested alumni brought them to the aid of depleted chapters. With the aid of a new publication, *The Sentry*, chapters were kept informed of the latest developments not only in the national office but in other chapters as well.

So successful was the campaign that chapter after chapter awoke, shook off the ravages of another war and dug in for the difficult task ahead. Kappa Delta Rho, through its executive-secretary, took a new interest

(See Page 7)



# Student of All Trades

*Reprinted from the August 4 edition of the BUFFALO EVENING NEWS.*

Donald P. Ely is a young man whose ordinary daily schedule gives the lie to the old saw that there aren't enough hours in the day.

This 20-year-old teacher, scientist, Methodist preacher, and race track cashier even has time to devote to his hobby, color photography. He took a precious hour Friday to talk about his summer's work.

Principally, he spends his time teaching the uses of audio-visual techniques in education at the University of Buffalo. He has a class of 64 graduate students, all of them teachers or professional persons older than himself.

But that accounts for only a part of his day. He holds a local preacher's license in the Methodist Church and, last year, when a senior at the State College for Teachers at Albany, he conducted services in two churches. He will preach tomorrow and Aug. 12 in University Methodist Church.

## Man of Many Interests

Teaching, experimenting in the school laboratory and conducting church activities apparently aren't enough for this man who appears as youthful as a college freshman. At night, Mr. Ely has been a cashier at the parimutual window of the Buffalo Raceways in Hamburg.

'I pay out about \$2000 every night at my \$2 'place' window,'

he said. 'If I don't come out right every night, they take the amount I'm short out of my pay. You have to be pretty accurate. So far, I've lost only one dollar.'

Money he earns this summer will help him this fall when he joins the staff of Syracuse University. He will teach audio-visual methods and take graduate courses while there.



**DONALD P. ELY**

While in the State Teachers College at Albany, he conducted a disk-jockey radio program of music and campus chatter over station WROW in addition to his class and church work.

'But that was only once a week,' he said modestly. Mr. Ely really is sold on his first love, audio-visual methods. His desk was crowded with project devices made by his students.



## Stays Busy to Enjoy Life

'Instead of giving my students a final examination, I'm having them complete audio-visual projects and make things which they can use in their own classrooms,' he said.

Church work, Mr. Ely admitted, also attracts him. He organized youth programs, preached and conducted church business last year in Clarksville and Reidsville. But will he enter the ministry? He doesn't know yet.

'I do enjoy the work and I enjoy the service,' he said. 'But I believe that sometimes a person can be a better minister outside the church than in.'

Even Mr. Ely's scheduled relaxation time has a business-like reason behind it. This takes place in his home at 497 Hewitt Ave.

'Sunday evening is my television night,' he said. 'I usually sit back and watch programs because it is becoming such a big thing in audio-visual work, I feel that, as a teacher, I must keep up with developments in the medium.'

The interview ended when Mr. Ely picked up an armload of books, reading for spare moments, and strode out of the laboratory. Over his shoulder he said, 'If you're not busy, you don't enjoy life.'

KAP

## ENSINGER RESIGNS

in affairs of the National Interfraternity Conference. He became chairman of the local interfraternity councils committee and in that office visited many campuses to aid in the organization of fraternity councils. As official representative of

the NIC he added to the prestige of KAP by his wise and tireless efforts on behalf of the entire fraternity system. He made many friends among educators throughout the country and was always outspoken in his belief that a fraternity could be made a meaningful experience in the lives of college men.

He fought against the common fallacious belief that a fraternity is nothing more than a boarding house, and burned much midnight oil among the growing chapters of KAP to instill in the active members a conviction that brotherhood means more than just eating and sleeping in the same house. His conviction was so great that sometimes his efforts and activity were misunderstood by book-burdened actives. He stood in his tracks, however, and through persistent resolution built up in KAP a spirit that brought her recognition as a fraternity that stood for the highest ideals of Christian brotherhood.

During the five years and more that Brother Ensinger was at the helm, one chapter, Oklahoma, was added and another, a colony at the University of Florida, is serving its apprenticeship. The installation of Chi Colony in Florida would bring to nineteen the number of active chapters now on the roll.

The entire fraternity wishes former executive-secretary Ensinger success in his new venture, certain in the belief that he will take with him those principles of honor that characterize the true man of Kappa Delta Rho.

KAP

Contribute to the Loyalty Fund



# Eliminating Hell Week

The mark of passing time has been evident in many phases of living and recreation. Ways of thinking have progressed so that many institutions of today bear little resemblance to their predecessors. One of the more radical changes evident on the Indiana University campus is in the structure of its fraternities. Today membership in fraternities is much less restricted and senseless hazing of Hell Week has been replaced by a project that has placed Indiana among the leaders in its treatment of this problem. Fraternities are now serving the community thru some constructive project.

During the school year 1949-50, Alpha Tau Omega social fraternity instituted the idea of a service project by undertaking some much needed task in the community. Duties were performed by the pledges and were included in their Hell Week requirements. The community service idea replaced the old wild shenanigans and horseplay which was characteristic of Hell Week in fraternities of a few years ago.

Nu Chapter of Kappa Delta Rho at Indiana University accepted the idea readily and included it in their Hell Week by sending their prospective initiates to the Knight House, a dormitory and home for approximately 60 people who are suffering from speech defects. Sixteen pledges were fully equipped to paint, scrub, repair, wash, and do anything else that was needed. They worked for six hours and transformed the Knight House into tip-top condition again. Fixtures were repaired, windows

were washed, floors were scrubbed and other odds and ends were done. The expense and other costs were handled by our chapter of KAP, and all the pledges asked of the Knight House residents was to lift their feet when our men scrubbed the floor.

The new idea has brought considerable favorable comment from school and city officials. Other fraternities quickly approved the project and made plans for this year. The whole idea is that as long as Hell Week is necessary for initiation and a good deal of effort must be expended, the time and energy may as well be channeled into doing something useful.

There is no reward for this, except the grateful smiles of the people the fraternity has helped and the good feeling and pride one takes in knowing that in some small way he has been able to help those less fortunate than himself.

KAP

Have You Contributed?

## PRINTED SPECIALIZED SPORTSWEAR

To Build Spirit and Publicize

Your Fraternity

### PRINTED "T" SHIRTS

Designed for comfort & appearance. Fine combed cotton, fully cut with tight fitting neckline & deep armholes. Accumulate your brothers' orders and take advantage of this low quantity price.

Chapter name FREE

on orders of 3 dz. or more.

**\$9.50** per doz.

**EXTRA HEAVYWEIGHT "T" SHIRT...\$12.00 per dz.**

Sweat Shirts (Processed) .....\$18.50 per dz.

Cardigans (Processed) .....\$27.50 per dz.

Sweat Shirts & Pants .....\$40.00 per dz.

4 Pc. Gym Uniform .....\$27.00 per dz.

(Processed Tee, Short, Bike Supporters, Gym Sox.)

Write for FREE Sportswear Catalog F 10

Campus Agents Wanted

**RICHARD SMITH CORP., 217FR Centre St., N.Y. 13, N.Y.**





# Lafayette Elects Thompson

## Gotshall And Stevens Serve On Council

Kappa Delta Rho alumni continued to occupy leading positions in the Lafayette College Alumni Association as a result of balloting during the June reunion. Robert B. Thompson, Jr., P '24, former vice-president of the Association, was named national president for the coming year. Ralph K. Gottshall, P '27, is currently chairman of the Alumni Council, governing body of the Association, and Robert A. Stephens, P '30, is also a member of the Council.

Besides occupying both top jobs in the alumni organization of the college, KAP's thus also hold three of the eight positions on the governing board, as Brother Thompson is an ex-officio member of this group.

Brother Thompson, who has been active both in college and Rho Chapter alumni work for many years, is a resident of Lancaster, Pa. and comptroller of the Hamilton Watch Corporation of that city. His link to KAP is strengthened by the fact that



Robert B. Thompson, Jr.

one of his sons, Robert B., Jr. is presently a senior at Rho.

Brothers Gottshall and Stephens, also both long associated with alumni activities, make up a powerful two-thirds of the KAP triad. Gottshall, recently named vice-president of the Atlas Powder Company in Wilmington, Del. has headed the Alumni Council for a number of years. Stephens, an executive with C. K. Williams of Easton, site of Lafayette, will occupy his term on the Council until 1955.



Ralph K. Gottshall



Robert A. Stephens



*(The Quill and Scroll editorials do not necessarily reflect the thinking of all members of our great little fraternity. They are meant to present problems of interest to members at large. The editor accepts all credit or blame for the opinions expressed herein, but he expects those who disagree to respect also those who agree with him. These columns are always open for the discussion of fraternity problems. Your editor invites your comments, either pro or con, but he cannot publish any communication that hurls invectives.)*

### New Cover

With this issue we present a new cover to KDRdom. The idea of Expansion Chairman Fred Closs, it expresses better the conservatism which Kappa Delta Rho has always been so proud of. We are sure that its appeal will be a new chapter in the history of a fraternity that is growing in stature by its support of those things which mean something.

We are also presenting for the first time editorials much shorter than those of the past. The con-

densation will no doubt lose some of the facts but we hope contain the meat. We hope you like them, read them, and ponder their meaning as related to KΔP. We even hope that you disagree with some of them for with disagreement and subsequent argument comes growth. We should foster a conservatism that results in growth, not stagnation.

### Twilight of Honor

A most gratifying satisfaction fills the heart of every genuine member of Kappa Delta Rho when he reads an editorial like 'Twilight of Honor' in the July Redbook. Written by a member of Xi Chapter, Roland Gammon, the editorial contains everything that a true son of KΔP should stand for.

More Christian answers are needed for the problems of a rather perverted generation. Basketball scandals, insincerity in public office, backbiting in everyday jobs, all bear the stamp of a generation that thinks of HONOR last in-



stead of first. First in the hearts of all true KDR's should be HONOR. May we keep it that way and make our fraternity something to be proud of. Hold your head high when you hear 'Kappa Delta Rho'. It means HONOR.

### **Maturity?**

Maturity! What are we doing to make initiates mature? Are we taking a mature attitude toward fraternity life or do we consider it just another lark?

Students at Harvard have questioned the restrictions placed upon students regarding the entertaining of girls in rooms. They are seeking a mature solution of the problem. If a student cannot learn to respect womanhood then a very important part of his education must have been neglected. If he has not learned anything from his books but logarithmic tables, rhetorical figures, and reams of dates, then his education cannot be complete.

Until he learns to apply the proper Christian philosophy to dating, drinking, scholarship, and just plain living then he doesn't deserve a college diploma. It is about time that college authorities trained college students in the spiritual

values that will generate among the future leaders of this country a respect for the individual, male or female. Less emphasis should be put on making a living and more on living.

Kappa Delta Rho should take a strong stand for maturity. We can prove that the principles of Christianity will work in a fraternity. Unless we do we are wasting our time.

### **New Advertiser**

Elsewhere in this issue is the first advertisement by the Richard Smith Corp. We think their prices are very reasonable; we hope that chapters needing their products will support them.

For financial support of our magazine we need more advertising. Your support of our advertisers will determine what we can offer them in the future. Give them a try.

### **New Executive-Secretary**

Kappa Delta Rho is happy to announce that Hugh Penman, formerly field secretary on the West Coast, has been engaged to succeed Ferd Ensinger as executive-secretary. After an extensive trip visiting chapters on the West Coast and in the Midwest he will take up headquarters at 443 Grove Street, Rahway, N.J.



# Chapter Eternal

Charles H. Woolley, @ '27

Charles H. Woolley, @ '27, died suddenly on November 11, 1950 after suffering a cerebral hemorrhage while driving his automobile in Cranford, N.J. A noted boiler design engineer, Brother Woolley was associated with the Babcock and Wilcox Company of New York City since his graduation from Purdue. Besides being a member of Kappa Delta Rho, he was connected with Scabbard and Blade, Tau Beta Pi, Pi Tau Sigma, the ASME, the Purdue Club of New York and the Sons of Indiana of New York. A native of Summitville, Ind., he had lived in Cranford for twenty-three years.

William S. Tanner, 8 '28

A graduate of Colby College in 1928 and a brother of Xi Chapter, William S. Tanner died in Garden City, Long Island, October of 1950. Since 1932 he had been a master at St. Paul's School in Garden City, and at the same time held the positions of registrar and head of the Upper School. He was a member of the Evaluating Committee of the Mid-Atlantic Association of Private Preparatory Schools and of the correcting staff of the College Board Examiners. The Rev. Harold F. Lamoine, Kappa Delta Rho spiritual adviser and a classmate of Brother Tanner's, read the scripture at his funeral in Garden City.

Dr. O. R. Chambers, N Hon.

From the *Portland Oregonian*.  
Dr. O. R. Chambers, 57, for the past 22 years head of the Oregon State college department of

psychology, died here Wednesday. (Feb. 21.) Death was caused by a cerebral hemorrhage.

Widely known throughout the Northwest as a psychologist, Dr. Chambers was one of the most popular speakers on the college staff and was much in demand by groups of all types throughout the state.

Born and educated in Indiana, Dr. Chambers spent most of his early life in that state. He received his doctor's degree from Ohio State university in Columbus and came to OSC from the University of Texas in 1929.

## Varied Positions Occupied

Dr. Chambers had been active in numerous psychological associations of Oregon and the Pacific Northwest. He was president of the Benton county hygiene committee last year, and also active in the Pacific Northwest council of family relations.

He was a member of numerous social and honorary societies including Sigma Xi, Kappa Delta Pi, Phi Delta Kappa, Alpha Psi Delta, besides being a member of Kappa Delta Rho. (*Brother Chambers, Nu Chapter, was a five-year contributor to the LOYALTY FUND.*)

He is survived by his widow, the former Gladys Dawson, a son, Neil, now with the U.S. Army in Korea; a daughter, Mrs. Martha E. Smith of Corvallis, and a brother, Ronnie Chambers of Jasper, Ind.

No funeral service will be conducted. Committal is in charge of the Warner-McHenery funeral home of Corvallis.



George Kopsick, Jr., @ '47

The first Kappa Delta Rho to give his life in the Korean War, George Kopsick, Jr., @ '47, was killed in action sometime in October 1950. Brother Kopsick was a first lieutenant in the U.S. Army, having obtained his commission through advanced ROTC training at Purdue. He graduated from the University with a Bachelor's Degree in home economics and was a native of Gary, Indiana.

Walter A. Goss, Sr., Σ Hon.

Walter A. Goss, Sr., donor of Sigma Chapter's 'Goss Award for the Outstanding Senior' and an honorary member of that chapter, died in Portland, Oregon on September 11, 1950. Brother Goss was the father of two KAP's, John C. and Dr. Walter A., Jr. and besides being a successful agent of the Mutual Life Insurance Society of New York in Portland, he was the organizer of the Irvington (Portland) Children's Parade and many other community activities, and an active KAP. An editorial in the *Oregon Journal* of September 12, 1950 read in part: 'Walter Goss was a successful businessman, a useful citizen, a devoted father and husband, a good companion. He lived the well-rounded life of a man who liked and respected all people.'

'Portland is a better city because he lived in it.'

John L. Gieger, N Hon.

Prof. John L. (Jack) Gieger, professor of music at the University of Indiana and an active honorary member of Nu Chapter, died suddenly on June 13, 1950 at his home in Bloomington.

Russell Helmer, T '40

Russell Helmer, T '40, of Wilmerding, Pa. has been reported deceased by the post office of that city.



Pete Bendorf, Δ '46, was married to Carolyn Tyler, ΑΓΔ, of Vilisca, Iowa at Iowa State College on Mar. 20, 1950. Pete moved to Iowa State to study veterinary science.

#### KAP

Schuyler L. Mott, Ε '51, and past consul of Xi Chapter, was married to Miss Constance M. Alta on February 4 at Sanford, Maine.

#### ALUMNI NOTICES

**CHICAGO ALUMNI ASS'N.** - Meets 3rd Thursday of the month at Allegretti's Cue Room, 135 W. Madison Street at 6:30 P.M. Secretary - C. O. Bernard, 5823 N.W. Circle Ave., Chicago 31.

**LOS ANGELES** - Meets irregularly. All southern California alumni invited. For next meeting contact Robert W. Houston, 3607 Plumosa, San Diego 6, Calif.

Notices of both regular and special meetings of alumni associations should be sent to the editor, 443 Grove Street Rahway, N.J. for inclusion in future issues.

# Contribute to the 1951 Fund

The 1951 LOYALTY FUND is now open for contributors. On June 30 the 1950 Fund was officially closed with a total of 155 loyal members contributing \$521.00.

For the past five years KΔP has been kept solvent by the generous help of those alumni who wish to see the ideals of KΔP perpetuated. The cost of everything has risen, but income has not kept pace with costs. The slack has been taken up by you loyal alumni who have aided KΔP to take its rightful place among the fraternities of the country.

This year we are asking every alumnus to contribute something to the LOYALTY FUND, even if it is only a 3¢ stamp to help us keep down the postage bill. In the interest of economy we are NOT including postage paid envelopes this year. We feel that every KΔP wants to help and will be glad to furnish his own stamp.

WE WANT EVERY KΔP TO CONTRIBUTE TO THE 1951 FUND. WON'T YOU SIT DOWN NOW AND SEND IN YOUR DIMES, YOUR DOLLARS, WHATEVER YOU FEEL YOU CAN AFFORD. MAKE IT A 100% YEAR.

Simply address: LOYALTY FUND, 443 Grove St., Rahway, New Jersey.

## CONTRIBUTORS TO THE 1950 FUND

A complete list of those who contributed to the 1950 Fund follows. Numbers before names indicate the number of years contributing. \* - In Memoriam.

### ALPHA

- 3 Adams, Edw., '47
- 5 Arnold, S.H., '41
- Corttis, H.S., '24
- 5 Edmunds, W.H., '17
- 5 Ensinger, F.B., '45
- 4 Ensinger, L.G., '44
- 5 Fellows, P.E., '20
- Fort, C.A., '15
- 5 Hagar, I.D., '09
- 2 Hallock, Edw., '38
- 5 Hickcox, Rev. E.S., '26
- 3 Hoffman, A.J., '30
- 5 Murdock, C.W., '10
- 5 Root, M.J., '13
- Schuettauff, H.W., x'27
- 5 Shaw, G.E., '10
- 4 Walch, C.M., '07
- 3 Walch, R.E., '46
- 5 Walch, R.H., '13

### BETA

- 5 Davison, L.W., '16
- 2 Flumerfelt, W.E., '23
- 4 Johnson, R.A., '25
- 5 Marquette, B., '15
- 5 Oest, J.A., '31
- Rea, Dr. F.W., '31
- 5 Wilbur, J.W., '21
- Winchester, M.F., '21

### GAMMA

- 5 Haswell, H.M., '32
- 3 Leneker, H.W., '43
- Muggleton, J., '39
- Phipps, W.K., '43
- 3 Wagner, W.W., x'43

### DELTA

- 4 Hancock, R.O., '35



- 3 Naeye, P.J., '25
- 2 Stewart, S.W., '39

## EPSILON

- 5 Klipsch, G., x'33
- Tash, R., x'52
- 5 Volland, R.F., '43

## ZETA

- Delp, C.W., Jr., '49
- 5 Erb, H.G., '19
- 4 Hartman, W.D., '34
- 2 Jensen, T.R., '50
- 5 Jones, D.A., '31
- 5 Kutz, W.N., '29
- 3 McCallaugh, R.P., '31
- 3 Risteen, R.N., '47
- 2 Stein, L.G., '47

## ETA

- 5 Blakeley, J.L., '22
- 5 Doud, O.L., '22
- 3 Harman, H.F., '40
- 5 Herche, A.G., '23
- Johnson, W.A., '32
- 4 Larsen, K.A., '30
- 5 Powell, W., '22
- Robinson, E.B., '27
- 3 Stevens, C.V., '41
- Wharf, J.E., '31

## THETA

- Anslinger, U., '49
- \* Chambers, W.H., '36
- Ellenberger, J.R., '49
- Green, V.H., '49
- 5 Hill, R.M., '39
- 4 Hobbs, C.L., '41
- Hommell, D.R., '31
- 4 Peer, G.J., '45
- 5 Steinfeldt, W., '38
- \* Suesse, R.A., '38

## IOTA

- 5 Glover, E.A., '30
- 5 King, A.P., '21
- 5 Priemer, B., '28
- Rhoads, W.K., '50
- 5 Sanders, C.L., '13
- Schaeffer, J.I., '49
- 3 Stricker, R.S., '34
- 2 Webster, G.E., '08

## KAPPA

- Boresh, J.K., '50
- Hauseman, H., Jr., '26
- 3 Miller, H.C., '33
- 5 Sherwood, R.M., '34
- Swormstedt, C.W., '22
- 5 Weaver, M.C., '36

## LAMBDA

- 4 Babin, N.S., '23

- 4 Baldwin, D.H., '28
- 3 Brainerd, C.I., '24
- 5 Bruce, R.W., '26
- 2 Carmichael, N.J., '49
- 5 Deakins, D.D., '44
- 5 Fink, L.R., '33
- Haley, J.B., Jr., '49
- 4 Heath, E., x'23
- 2 Houston, R., '46
- 3 Lewis, V.D., '33
- 3 McInerney, J.E., '43
- 2 Newell, C.H., x'24
- Rowland, M., '26
- 2 Wall, I.L., '30

## MU

- 4 DeWitt, F.J., '29
- 5 Ford, H., Jr., '28
- 5 Innes, R.S., '28
- Steinko, S.M., '28
- Twitmire, R.F., '43

## NU

- 3 Atkinson, A.R., '33
- 2 Brockman, E.F., '37
- 3 Foster, D., '42
- 3 Glendening, G.R., '31
- Kriebble, J., '49
- 5 Maurer, R.M., '38
- 5 Miller, B.W., '31
- 4 Rich, C., '29
- Ulrich, R., '50
- Wood, R.L., '45

## XI

- Antan, J.G., '38
- 4 Buyniski, E.F., '35

## OMICRON

- 2 Boaz, H.M., '33
- 5 McKay, C.D., x'32
- 3 Sattilaro, M.P., '30

## PI

- 4 Armitage, A.E., '14
- 4 Frey, A.M., '38
- 5 Garman, W.E., Sr., '20
- 5 Sandlas, W.H., '14
- 2 Schlueter, S.D., '46
- 5 Strayer, H.W., '10

## RHO

- 4 Corwin, R.W., '25
- 3 Crosen, R.G., Hon.
- Davis, R.W., '37
- Dean, A.N., '43
- Fern, N., '50
- 5 Fooder, E.G., x'33
- 5 Gottshall, R.K., '27
- 2 Kennedy, L.G., '44
- 3 McLean, W.G., '32
- 5 Payne, W.T., '25
- 4 Probst, J.R., '35

- 3 Raver, R., '35
- 4 Snyder, C.E., '29
- 5 Stephens, R.A., '30
- Thompson, R., Sr., '24
- 5 Wallace, W.C., '28
- 5 Wolfe, D.C., '25

## SIGMA

- Beane, R., '44
- 5 Chambers, O.R., Hon.
- 5 Goodale, R.W., '29
- 3 Goss, W.A., Jr., '32
- 4 Hixson, R.F., '24
- 2 Leaf, C.S., '43
- McClure, J.R., '49
- Morris, K.W., '33
- Robertson, G.M., '41
- 3 Stokesbury, W.A., '32
- 5 Wymore, E., '38
- 2 Young, K.F., '49

## TAU

- 4 Adams, K.R., '27
- Delaney, J.J., '33
- 3 Lewis, D.W., '28
- 4 Nielson, H.N., '32
- 5 Schell, M.R., '24
- 5 Williams, A.L., '38

## UPSILON

- Edwards, S.H., Jr., '49
- 2 Ellis, C.J.

## Pictures Get Results For Rho; Repairs Made

A very attractive bulletin to all Rho Chapter alumni last spring actually pictured needed repairs around the house. The response was spontaneous, with \$120 being collected immediately from 22 alumni back for Alumni Day at Lafayette. Other help came in by mail so that this fall the house sports a new coat of paint outside, rotted pillars have been repaired and the living room furniture is covered with new plastic material. The college supplied the help to beautify the grounds so that a fresh crop of grass will now cover the formerly stony front yard.

Rho made a record last year by spending \$2300 out of the

house budget for a new stove, a new living room rug and a sizeable sum for amortization of the mortgage. Sounds like stable financing! Interested chapters may request information as to how it can be done; Rho will gladly supply the details.

## Directory

### OFFICERS AND DIRECTORS

- Pres. - E. Mayer Maloney (1954)  
5317 Graceland Ave.  
Indianapolis 8, Ind.
- Vice-pres. - Alton R. Snyder (1952)  
565 North Walnut St.  
Franklin, Ind.

- Treas. - Don G. Leach (1956)  
4 Locust St.  
Madison, Maine

- Ass't treas. - Walter E. Garman, Sr.  
3513 St. James Road (1956)  
Baltimore 7, Md.

### DIRECTORS

- Harold H. Brelsford (1952)  
211 State St.  
West Lafayette, Ind.
- Gordon Eldredge (1952)  
511 Olentangy St.  
Columbus 2, Ohio
- Dr. Robert J. Crosen (1952)  
901 McCartney St.  
Easton, Pa.
- Bernhard A. Priemer (1954)  
9 West Hudson Ave.  
Englewood, N.J.
- Merle W. Garing (1954)  
2561 Carisbrook Drive  
Oakland, Calif.

### ALTERNATE DIRECTORS

- George E. Shaw  
220 Broadway  
New York 7, N.Y.
- Oscar L. Doud  
Box 471  
Akron 9, Ohio
- G. Morris Robertson  
945 North 34th St.  
Corvallis, Oreg.
- EXPANSION COMMITTEE
- Frederic T. Closs, Chairman  
3609 Locust Street  
Philadelphia 4, Pa.



#### EXECUTIVE SECRETARY

Hugh S. Penman  
443 Grove Street  
Rahway, N.J.

#### SCHOLARSHIP COMMISSIONER

Dr. Robert J. Crosen  
901 McCartney St.  
Easton, Pa.

#### FINANCIAL ADVISER

Fred G. Harrison  
Bank of Herrin  
Herrin, Ill.

#### CONTROLLERS

Orrin G. Judd  
655 Madison Ave.  
New York 21, N.Y.

Leo T. Wolford  
1711 Ky. Home Life Bldg.  
Louisville, Ky.

#### ALUMNI COMMISSIONER

Walter E. Garman, Sr.  
3513 St. James Road  
Baltimore 7, Md.

#### NATIONAL HISTORIAN

George E. Shaw  
220 Broadway  
New York 7, N.Y.

#### NATIONAL CHAPLAIN

The Rev. Harold F. Lemoine  
9910 - 217 Lane  
Queen's Village, L.I., N.Y.

#### COMMITTEE-CONSTITUTIONAL REVISION

George E. Shaw, chairman  
H. Guy Erb  
Roswell W. Corwin  
Orrin G. Judd

#### COMMITTEE-PUBLICATIONS

John O. Boyd, chairman  
George E. Shaw  
Ferd B. Ensinger  
Don C. Wolfe  
Dwight W. Lewis  
Frederic T. Closs

Beta - Cornell University  
301 Eddy St., Ithaca, N.Y.

Gamma - Albany State Teachers  
295 Western Ave., Albany, N.Y.

Delta - Colgate University  
Hamilton, N.Y.

Epsilon - Franklin College  
801 East Jefferson St.  
Franklin, Ind.

Zeta-Pennsylvania State College  
Vincent Purcell, Proprietor  
420 East Prospect Ave.  
State College, Pa.

Eta - University of Illinois  
Robert B. Foxall, Proprietor  
1110 South Second St.  
Champaign, Ill.

Theta - Purdue University  
1134 Northwestern Ave.  
West Lafayette, Ind.

Iota - Bucknell University  
120 South Sixth St.  
Lewisburg, Pa.

Kappa - Ohio State University  
1985 Waldeck Ave., Columbus, O.

Lambda - University of California  
2250 Piedmont Ave.  
Berkeley 4, Calif.

Nu - Indiana University  
814 E. Third St.  
Bloomington, Ind.

Xi - Colby College  
Waterville, Maine

Pi - Gettysburg College  
Gettysburg, Pa.

Rho - Lafayette College  
Easton, Pa.

Sigma - Oregon State College  
Bob Drews, Proprietor  
140 North 23rd St.  
Corvallis, Oreg.

Upsilon - Fresno State Teachers  
243 No. Van Ness Ave.  
Fresno, Calif.

Phi - University of Oklahoma  
1008 Monnett Ave., Norman, Okla.

Chi Colony-University of Florida  
Gainesville, Fla.

Psi Colony-Lycoming College  
C. Scott Wilhelm, Pres.  
Williamsport, Pa.

## Chapter Directory

Alpha - Middlebury College  
Ferd. L. Wyckoff, Jr., Proprietor  
48 South Street  
Middlebury, Vermont

# KAP ALUMNI and ACTIVES

*Order Your Jewelry Direct from This Page*

## KAPPA DELTA RHO

### Official Lodge Price List

#### REGULATION

Crown set Whole Pearl Delta	\$ 12.50
Crown Set Whole Pearl Delta, Garnet Points	12.50
Crown Set Whole Pearl Delta, Ruby Points	13.75
Crown Set Whole Pearl Delta, Diamond Points	35.00
Crown Set Whole Pearl Delta, Diamond Points, Diamond in Center of Delta	45.00
Crown Set Whole Pearl Delta, Ruby Points, Diamond in Center of Delta	27.50
Crown Set Whole Pearl Delta, Ruby Points, Ruby in Center of Delta	15.50
Full Diamond Delta	100.00
Full Diamond Delta with Dia- mond in Center of Delta	115.00

#### GUARD PIN PRICES

	Single	Double
	Letter	Letter
Plain	\$ 2.25	\$ 3.50
Crown Set Pearl	6.50	11.50

#### COAT-OF-ARMS GUARDS

Miniature, Yellow Gold	\$ 2.75
Scarf Size, Yellow Gold	3.25

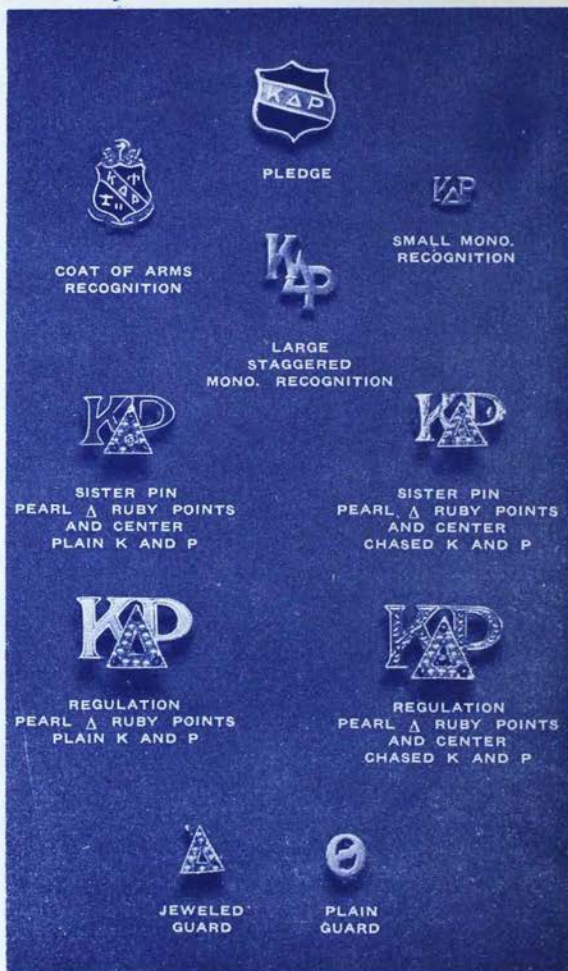
#### SISTER PINS

Crown Set Whole Pearl Delta, Garnet Points	\$ 8.75
Crown Set Whole Pearl Delta, Ruby Points	9.50
Crown Set Whole Pearl Delta, Ruby Points, Ruby Center of Delta	9.75
Crown Set Diamond Delta	70.00
Crown Set Diamond Delta, Diamond Center	75.00
Chased Kappa and Rho, Regula- tion Badge	\$1.50 extra
Sister Pin	\$1.00 extra
Pledge Buttons, each	.50
Recognition Buttons	
Monogram Gold Filled, each	1.00
Miniature Coat-of-arms, Gold, each	1.00
Miniature Coat-of-arms, Silver, each	.75

Jeweled badges may be engraved at no extra charge, providing a deposit of at least one-third of total amount accompanies the order. Instructions for engraving should be clearly printed. Check all names and dates carefully.

Proper official release must accompany your order to avoid delay in delivery.

Be sure to mention the name of your Chapter when ordering a guard for your pin.



ALL PRICES ARE SUBJECT TO 20% FEDERAL EXCISE TAX AND TO STATE SALES OR USE TAXES WHEREVER SUCH STATE TAXES ARE IN EFFECT

*Send for Your FREE Personal Copy of "The Gift Parade"*

PUBLISHED EXCLUSIVELY BY YOUR OFFICIAL JEWELERS

## BURR, PATTERSON & AULD CO.

ROOSEVELT PARK

DETROIT 16, MICHIGAN

*America's Oldest—and Most Progressive—Fraternity Jewelers*