

SPRING
1951

THE QUILL AND SCROLL



OF KAPPA DELTA RHO

JOHN LOY BLAKELEY

John Loy Blakeley, president of Kappa Delta Rho Fraternity, died May 7, 1951.

So closes the active career of one who has probably done more for this fraternity than any other man living or dead. His lifetime of service to his country's flag and to his fraternity that he loved needs no eulogy from me. Words are weak and soon forgotten but the memory of John Blakeley will remain treasured in the hearts of the men of Kappa Delta Rho.

We need not mourn his departure; he went as he wanted to go. It is rather for us who remain to carry on the task to which he gave the last full measure of devotion: that this fraternity, by the grace of God and by our individual and united efforts, may become an organized force for righteousness among the college men of this country.

HAIL AND FAREWELL! MAY HE REST IN
PEACE IN THE CHAPTER ETERNAL!

George E. Shaw



MEMBER OF THE NATIONAL
INTERFRATERNITY CONFERENCE

The QUILL and SCROLL



Official Publication
of
Kappa Delta Rho Fraternity

Vol. XXXVII Spring 1951 No. 1

This issue is dedicated to the memory of our great President, John L. Blakeley, who joined the Chapter Eternal on May 7, 1951.

Several hitherto unpublished pictures showing some of his activities on the KDR scene have been included in the story of his life.

We respectfully bow our heads in memory of one who served KDR with his all.

KΔP

THE FRONT COVER - Attractive Carol Mitchell, the first national Sweetheart of KΔP, as she leaves the Pi Beta Phi house for classes at Indiana University, Bloomington, Indiana. Sponsor was NU chapter.

FEATURED IN THIS ISSUE

John Loy Blakeley	2
Sweetheart of 1951	6
Regional Conventions	10
Delegates and Judges	14
Important Announcement	15
Directory	16

COMING - News of the alumni and actives from hither and yon. Executive-secretary resigns; new officers elected. Read it in the next issue.

Don Wolfe - EDITOR

Circulation this issue - 5500

Entered as second-class matter at the post office at RAHWAY, N.J.

Publication office: 443 Grove Street, Rahway, N.J. Published quarterly at the above office of publication. Subscriptions are available only to life members at \$10.00 each.

Notice of change of address should be given at least 30 days before date of issue. Give old as well as new address. Address all correspondence and contributions to the office of publication, 443 Grove Street, Rahway, N.J. Pictures will be returned upon request.



Fabian Bachrach

John L. Blakeley, 1899 - 1951

Brother Blakeley Joins Chapter Eternal

Was Most-traveled President in History of Fraternity

John Loy Blakeley, fourteenth national president of KAP, was probably the most traveled officer in the 46 year history of the fraternity. From XI to UP-SILON, practically every chapter has entertained president Blakeley for some special occasion.

John Loy Blakeley was born in Kilbourne, Ill. on August 3, 1899, the son of Mr. and Mrs. H. L. Blakeley.

He was graduated from Kilbourne Highschool in 1917 and entered the University of Illinois the following year. He pioneered in the establishment of Delta Pi local fraternity in

1918 and as one of the founders was initiated into Kappa Delta Rho in 1921.

He was active in the New York Alumni Association of KAP, serving as president from 1934 to 1935. He became grand president of KAP on June 8, 1946 and served in that capacity until his death on May 7, 1951.

A research engineer, he worked for various research organizations in the East including the Johns-Manville Corporation. He was working in Newark, N.J. at the time of his death.

His wife, his father, a sister and a brother survive. His mother followed him in death by exactly four weeks.

His service to his fraternity dates back to his college days.

Taken soon after President Blakeley was elected, this picture shows him with Treasurer Everts (seated) and Executive-secretary Ensinger when they were conferring about budgetary matters following a Board of Directors' meeting.



While in Illinois he was active in ETA chapter, culminating in his being the chapter delegate to the national convention. He attended practically every national convention since that time.

During World War II he became the national vice-president. When John O. Boyd asked to be relieved of his duties as president Brother Blakeley was elected to the highest office on June 8, 1946 at a Board of Directors meeting following the national convention in Columbus, Ohio.

The task he faced was a tremendous one. All but a few chapters had closed their houses during World War II; very few had a substantial nucleus with

To the right: President Blakeley is amused at some remark made at the 1948 Convention in Chicago. Below: at the NIC banquet in Washington in 1949. On his right is Alton Snyder, now vice-president. On his left are Albert Conradis and George Shaw, alternate director.



One of President Blakeley's fond references was to his work as an instructor on the New York Power Squadron, his only other activity besides his fraternity.

A respected member because of his long service with the Squadron, he had become instructor in navigation. One evening a week was usually devoted to teaching the newer members.

One of his students some years ago was a red-headed enthusiast who had just joined the squadron. His name - Arthur Godfrey.

which to begin rushing. Reactivation was a task that meant building from the foundation, for little was left on which to build. Many houses were in a state of disrepair that discouraged even the most ardent alumni. His was the task of welding the pieces together to

(Turn to page 16)

Upper right: As President Blakeley spoke at the Phi Installation banquet in Oklahoma City, 1949. Middle right: With Vice-president Sandlas following the Pi initiation ceremony in 1950. Lower right: With some of the Pi alumni who attended the same initiation ceremony. Below: With two Alpha undergraduates on the Middlebury ski course during a visit to that chapter in 1948.



Sweetheart of 1951

Carol Mitchell, Fair Co-ed From Indiana Chosen First KDR Sweetheart

By Jim Hetherington

Pretty Carol Mitchell, a Pi Beta Phi at Indiana University, is the Kappa Delta Rho SWEET-HEART of 1951. By winning the title this year, she becomes KAP's first national SWEETHEART.

Carol was entered first in the I.U. chapter's Sweetheart

Contest by her pinman, Dale Monroe, of NU. She was chosen the Sweetheart of NU in January and then the Sweetheart of all KAP in April. At NU chapter's twenty-fifth anniversary on April 8, both titles were officially bestowed on her.

With her quick sweet smile and her sparkling personality, Carol has become very popular on campus - with co-eds as well as boys. Twenty-one years old,



she is 5 feet 3 inches tall and has brown hair and blue-green eyes.

Carol is not, however, like the typical 'queen' - beautiful but dumb. Besides being attractive, she is very talented. In three years as an art major at I.U. Carol has maintained better than a B average, and at the same time she has entertained regularly on campus and throughout the state. She has also filled many responsible positions in campus activities.

With her chalk talks and marionette shows, using marionettes she herself created, Carol has gained a wide reputation as an outstanding entertainer

The 1951 KAP Sweetheart finds every day filled with activities both curricular and extra-curricular. She does find time to eat lunch with her Pi Phi sisters (above) after which she may often be found at the Art Center working on some art project (center) and surrounded by paints and, on a warm day, Coke bottles. Sometimes she finds time to sun herself in the Pi Phi backyard (below) but always the day is a busy one for Carol.



Whether Carol entertains soldiers with a chalk talk at Camp Atterbury (below) or the KAP boys at 814 East Third Street, she is always the center of attraction.



of children and adults. Besides working alone, she performs on a local television show with a group of students called the I.U. Madcaps, who put on shows all over the Midwest. The Madcaps have traveled as far as Pittsburgh to do a show.

When she graduates, Carol wants to get a job on television as a children's entertainer. She loves youngsters and can win their attention and their friendship almost instantly -even before she starts her show. And she does equally well in winning over parents and teachers, with the subtle emphasis on good health and safety which she puts in her performance for children.



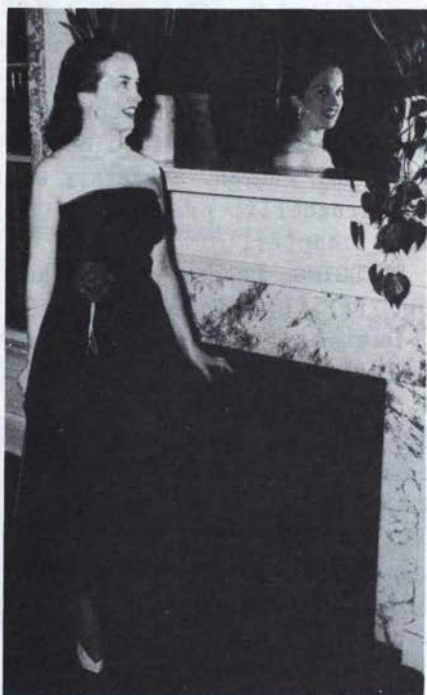
Carol's love of people, especially children, comes partly from being a member of a large family. She grew up in Rochester, Indiana, which is still her home, with three sisters and a brother. Now two of her sisters are married and the third is a freshman in high-school. Her brother is a freshman at Indiana University.

Carol was active in extra-curricular work in highschool, especially in dramatics and on the staffs of the school paper and the yearbook, but since coming to I.U. she has been really outstanding. Last year she was vice-president of the sophomore class, the highest class office open to a co-ed.

This year Carol has served as Art Editor of both the *Arbutus*, the college yearbook, and *The Crimson Bull*, the campus humor magazine. She is a member of the YWCA Council and Pleiades, honorary for organized junior and senior women. She is also pledge trainer of her sorority. Just last May she was elected to Mortar Board, highest honorary for women.

Her combination of beauty and ability has brought Carol national, as well as campus-wide, recognition. Last December she appeared on Don McNeill's television show in Chicago as the representative of the college students of Indiana. This March she was featured in *The American Magazine* as the College Co-ed-of-the-Month.

Carol has been in several 'queen' contests, winning a fur coat and the title of Northern Indiana Crops Queen as early as her sophomore year in high-school, but she feels that being chosen KAP's Sweetheart of the Year is her greatest honor. And we feel that she is truly THE SWEETHEART OF KAP.



The Quill and Scroll, as well as the entire fraternity, wishes to extend to Carol Mitchell congratulations on her election as the first KDR Sweetheart. May she always be a sweetheart of Kappa Delta Rho.

Regional Conventions

They Resolve Problems Through Cooperation

West Coast

The third West Coast Conclave was held in the Upsilon chapter house, Fresno, Calif., on Sunday, March 18 at 2:10 P.M. Members of Lambda, Sigma, and Upsilon chapters attended, as well as alumni from Sigma and Upsilon. Chairman of the Conclave was the West Coast Field Secretary, Hugh Penman. Secretary was Jack Brughelli, praetor of Upsilon chapter.

PLEDGING. Leader - Ralph Enloe, jr., Upsilon.

Duties of pledges outlined as follows:

1. Each pledge should know the location of every fraternity house on his campus.
2. That it be obligatory to take part in all fraternity activities, especially in social functions.
3. Should suggest other prospective pledges.

ALUMNI AND PARENT RELATIONS. Leader - Dave Swall, Sigma

Many alumni feel that they lack correspondence from the active chapter. They have suggested that the actives send out newsletters, giving activities, whereabouts, etc. of all alumni.

Delegates and alumni suggested that chapters invite mothers and fathers to visit the

houses. Mothers should be encouraged to join the Mothers' Club, or form one, if one is not already organized.

RUSHING AND INITIATION. Leader - Don Edgar, Lambda.

The general conclusion was that initiations should take place the semester following pledging. This policy corresponds generally with practices at Fresno State, California, and Oregon State.

HOUSE MANAGEMENT. Leader - Grady Hobson, Sigma.

Delegates were urged to see that chapters remain financially solvent by having as many members as possible living in the house.

Announcement was made that the 1952 Conclave is to be held at Lambda chapter, Berkeley, with the date to be announced later.

Northeast

The second annual Northeast Regional Convention was held at Rho chapter house, Lafayette College, April 6-8. Chapters sending delegates were; Alpha, Beta, Gamma, Delta, Zeta, Iota, Pi and Rho. Frederic T. Closs, consul of Rho chapter, acted as convention chairman with Morry Albertson, Jr. taking the minutes.

Subjects for round table discussion included: results of

Selective Service on college enrolment for 1951-52, retrenchment for emergency period, chapter administration and the function of executive committee, rushing, better parent and alumni relations, and improvement of initiation ritual.

RETRENCHMENT FOR EMERGENCY.

1. Be optimistic.
2. Keep in touch with the national office.
3. Keep informed - read newspapers, Time, etc.
4. Keep accounting procedures under control. Accounts receivable should be kept at a minimum, books should be audited once a year.
5. Verify current charges and adjust where necessary.
6. Watch inventories - buy judiciously.
7. Plan and act on income and

expense budgets - watch variable expenses and cut corners.

8. Indoctrinate pledges quickly and thoroughly. Stress internal organization.

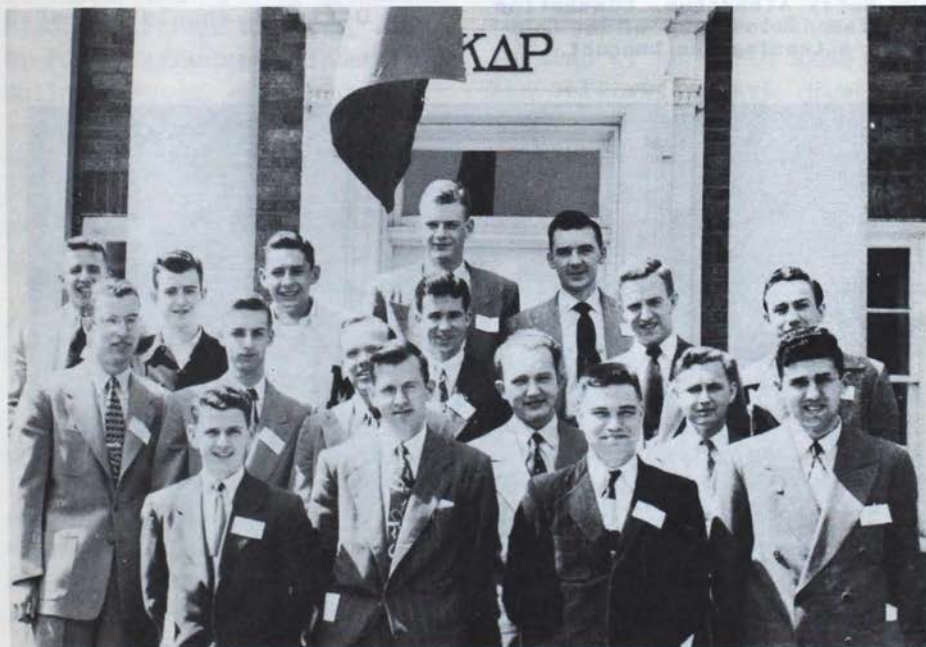
9. Keep alumni informed. The ones who have been out more than ten years are the valuable ones; they can give both advice and financial aid.

10. Delegate responsibility. How many men are actually working? There must be responsible men available if others leave.

CHAPTER ADMINISTRATION.

1. Have spiritual, moral, and educational goals.
2. Pick out 'dead wood'.
3. Strengthen pledge training.
4. Let an executive committee

This very enthusiastic group of actives met for the Northeast Regional Convention, April 6-8, at Rho chapter house, Lafayette College, Easton, Pa.





Dean Crosen gave an inspiring talk to the large group of delegates attending the formal banquet of the Northeast Convention. To his left: Fred Closs, Convention chairman, and Morry Albertson, Convention secretary. Below: some of the delegates attending the banquet.

formulate action, voted on ultimately by the chapter.

RUSHING.

1. If possible, keep card file and picture of rushee.
2. Stress KAP ideals and meaning of fraternity life in KAP.
3. Use literature such as rush booklets, etc.
4. Try to meet rushees informally at odd hours.
5. Concentrate on a small core group. If they like KAP they will tell others.

BETTER PARENT AND ALUMNI RELATIONS.

1. Letters to parents help to explain KAP and fraternities in general.
2. Postcard alumni letters make for more frequent contact.
3. Keep alumni card file up to date.

IMPROVEMENT OF INITIATION RITUAL.

1. Officers should rehearse parts.



2. Religious tone should be emphasized.

Dean Frank Hunt was the guest speaker at the first session on the subject of Selective Service. He also attended other sessions, including the formal banquet on Saturday evening.

Midwest

The full-day business sessions of the Midwest Regional Conference got underway at 10:00 A.M. on March 7 at the Epsilon chapter house with an informal round table discussion led by the executive-secretary, Ferd Ensinger, all delegations participating. Represented were: Theta, Nu, Eta, and Kappa chapters, besides the host chapter, Epsilon. Subjects on the agenda included; Coping with Emergency Problems, Pledge Training, Alumni-Parent Relations, Finance and Building Funds, and Expansion.

The Conference reached the conclusion that the best defense in the emergency is an all-out offense. This offense was seen to involve:

1. vigorous personal rush responsibility in support of rush committee programs;

2. a new cultivation of alumni interest through the postcard memo bi-weekly;

3. a vigorous cultivation of parent interest through Consul-Pledgemaster letters to the parents of all new pledges, plus follow-up invitations to visit

the house on Mothers' and Dads' Days;

4. the pay-as-you-go building fund program was seen as the best method of building a financial program for the house proper, such a fund to be administered by joint active-alumni trustees (active consul and quaestor plus corporation president and treasurer). The pay-as-you-go plan relieves a new alumnus from financial responsibility to the chapter at a time when he is just getting started in the workaday world.

5. pledge training was hit with a typical KAP emphasis and was seen to express without reservation either the best or the worst in chapter operation. Sound training at the door with only the best men accepted for initiation will give coherent and positive strength to a chapter. A man *MUST* know what he is joining if he is to know what his obligations are. His preconceptions are too often faulty. He must be taught. *PATHFINDER* texts are invaluable as first lessons in the fraternal idea... to be supported by operational and organizational problems at the local level to include a knowledge of the chapter by-laws, Roberts' Rules of Order, rush, finance, etc.

A luncheon was held for the delegates at the Epsilon chapter house, and following the afternoon sessions and a tour of the Franklin campus, a banquet was held in downtown Franklin.

Delegates and Judges



These delegates of the five mid-western chapters attended the Midwest Regional Conference, March 7 at Franklin, Indiana. Represented were members of Eta, Theta, Nu, Kappa, and Epsilon chapters. Informal round table discussions were led by Ferd Ensinger, executive-secretary.

Below: two of the judges for the selection of the first Sweetheart of KAP ponder some of the fine points of the contestants. Left is Don Wolfe and pointing to the winner is Warren Young of LIFE. Take the picture was Roland Gammon of SEE. A feature about him will appear in an early issue.



Just Off The Press!

OFFICIAL DIRECTORY

THE BOOK OF THE YEAR

Here is what some members say about it:

It is a pleasure to enclose a check for only one buck for so formidable an undertaking.

Bill Sandlas, Pi '14.

It's worth a lot more. It came in handy right away.

Barney Bernard, H '32

I am very glad to have this.

Leo T. Wolford, E '12

Good job! Thanks!

J. C. Affleck, A '31

Kappa Delta Rho members are certainly spread out over the country. This little or rather big listing should enable many of us to get in contact with fellows we have been wondering about for years as well as getting to know the members in our area.

Dwight W. Lewis, T' 28

Wonderful job done!

Dr. Robert S. Ackerly, B' 22

\$1 postpaid

Send orders to

Directory — Quill & Scroll

443 Grove St.

Rahway, New Jersey

Brother Blakeley (cont.)

form some structure for the future life of KAP.

His plan for reactivation required much time and travel. Between numerous conferences with the national executive-secretary and the editor he attended chapter initiations, banquets, symposiums. In addition he visited chapters to lend his advice on matters that could well determine whether the chapter lived or died. Noone who needed help was ever refused no matter what the distance or difficulty.

He presided over two national conventions with diplomatic yet firm parliamentary procedure. At Chicago in 1948 and at Berkeley in 1950 his was the task of integrating the affairs of the fraternity. At both conventions he steered the delegates over the rocks of several controversial issues besides helping to smooth some of the rough spots in an unbalanced budget.

He was well-informed on all these matters and his information enabled him to give a complete picture of the fraternity. Under his leadership the fraternity assumed a position of unity that was needed following the complete cessation of activities during the War.

BECOMES PRESIDENT

E. Mayer Maloney, vice-president at the time of Brother Blakeley's sudden death, has assumed all duties of the presidency.

DIRECTORIES BEING MAILED

The Directory is now back from the printer and copies have been mailed to all members who ordered them ahead. In case of error kindly notify the Quill and Scroll office, 443 Grove Street, Rahway, N.J.

A limited number of copies are still available to those who did not pre-order at the original price of one dollar. They will not last long. Get your order in now.

Directory

OFFICERS AND DIRECTORS

Pres. - E. Mayer Maloney (1954)
5317 Graceland Ave.
Indianapolis 8, Ind.

Vice-pres. - Alton R. Snyder (1952)
565 North Walnut St.
Franklin, Ind.

Treas. - Don G. Leach (1956)
4 Locust St.
Madison, Maine

Ass't treas. - Walter E. Garman, Sr.
3513 St. James Road (1956)
Baltimore 7, Md.

DIRECTORS

Harold H. Brelsford (1952)
211 State St.
West Lafayette, Ind.

Gordon Eldredge (1952)
511 Olentangy St.
Columbus 2, Ohio

Dr. Robert J. Crosen (1952)
901 McCartney St.
Easton, Pa.

Bernhard A. Priemer (1954)
9 West Hudson Ave.
Englewood, N.J.

Merle W. Garing (1954)
2561 Carisbrook Drive
Oakland, Calif.

ALTERNATE DIRECTORS

George E. Shaw
220 Broadway
New York 7, N.Y.

Oscar L. Doud
Box 471
Akron 9, Ohio

G. Morris Robertson
945 North 34th St.
Corvallis, Oreg.

EXECUTIVE SECRETARY

Ferd B. Ensinger, Jr.
15 Field End Lane
Tuckahoe, N.Y.

FIELD SECRETARY (West Coast)

Hugh S. Penman
2250 Piedmont Ave.
Berkeley 4, Calif.

SCHOLARSHIP COMMISSIONER

Dr. Robert J. Crosen
901 McCartney St.
Easton, Pa.

FINANCIAL ADVISER

Fred G. Harrison
Bank of Herrin
Herrin, Ill.

CONTROLLERS

Orrin G. Judd
655 Madison Ave.
New York 21, N.Y.

Leo T. Wolford
1711 Ky. Home Life Bldg.
Louisville, Ky.

ALUMNI COMMISSIONER

Walter E. Garman, Sr.
3513 St. James Road
Baltimore 7, Md.

NATIONAL HISTORIAN

George E. Shaw
220 Broadway
New York 7, N.Y.

NATIONAL CHAPLAIN

The Rev. Harold F. Lemoine
9910 - 217 Lane
Queen's Village, L.I., N.Y.

COMMITTEE-CONSTITUTIONAL REVISION

George E. Shaw, chairman
H. Guy Erb
Roswell W. Corwin
Orrin G. Judd

COMMITTEE-PUBLICATIONS

John O. Boyd, chairman
George E. Shaw
Ferd B. Ensinger
Don C. Wolfe
Dwight W. Lewis
Frederic T. Closs

Chapter directory

Alpha - Middlebury College
48 South St., Middlebury, Vt.

Beta - Cornell University
301 Eddy St., Ithaca, N.Y.

Gamma - Albany State Teachers
241 Manning Blvd., Albany, N.Y.

Delta - Colgate University
Hamilton, N.Y.

Epsilon - Franklin College
801 East Jefferson St.
Franklin, Ind.

Zeta - Pennsylvania State College
420 East Prospect Ave.
State College, Pa.

Eta - University of Illinois
1110 South Second St.
Champaign, Ill.

Theta - Purdue University
1134 Northwestern Ave.
West Lafayette, Ind.

Iota - Bucknell University
120 South Sixth St.
Lewisburg, Pa.

Kappa - Ohio State University
1985 Waldeck Ave., Columbus, O.

Lambda - University of California
2250 Piedmont Ave.
Berkeley 4, Calif.

Nu - Indiana University
814 E. Third St.
Bloomington, Ind.

Xi - Colby College
Waterville, Maine

Pi - Gettysburg College
Gettysburg, Pa.

Rho - Lafayette College
Easton, Pa.

Sigma - Oregon State College
140 North 23rd St.
Corvallis, Oreg.

Upsilon - Fresno State Teachers
1035 Harvard Ave.,
Fresno, Calif.

Phi - University of Oklahoma
1008 Monnett Ave., Norman, Okla.

Chi Colony - University of Florida
13 N.W. 11th St.
Gainesville, Fla.

KAP ALUMNI and ACTIVES

Order Your Jewelry Direct from This Page

KAPPA DELTA RHO

Official Badge Price List

REGULATION

Crown set Whole Pearl Delta.....	\$ 12.50
Crown Set Whole Pearl Delta, Garnet Points	12.50
Crown Set Whole Pearl Delta, Ruby Points	13.75
Crown Set Whole Pearl Delta, Diamond Points	35.00
Crown Set Whole Pearl Delta, Diamond Points, Diamond in Center of Delta	45.00
Crown Set Whole Pearl Delta, Ruby Points, Diamond in Center of Delta	27.50
Crown Set Whole Pearl Delta, Ruby Points, Ruby in Center of Delta	15.50
Full Diamond Delta	100.00
Full Diamond Delta with Dia- mond in Center of Delta.....	115.00

GUARD PIN PRICES

	Single Letter	Double Letter
Plain	\$ 2.25	\$ 3.50
Crown Set Pearl	6.50	11.50

COAT-OF-ARMS GUARDS

Miniature, Yellow Gold	\$ 2.75
Scarf Size, Yellow Gold.....	3.25

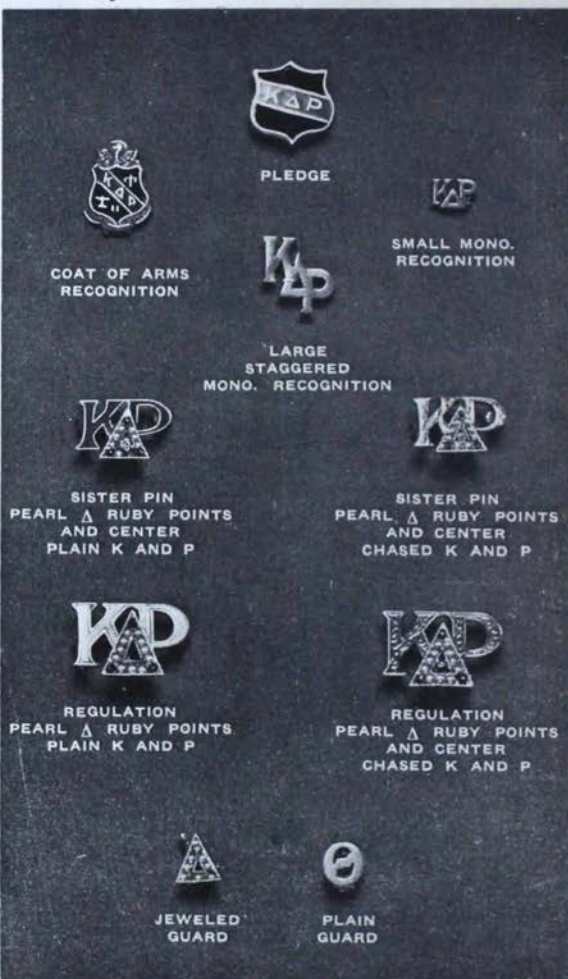
SISTER PINS

Crown Set Whole Pearl Delta, Garnet Points	\$ 8.75
Crown Set Whole Pearl Delta, Ruby Points	9.50
Crown Set Whole Pearl Delta, Ruby Points, Ruby Center of Delta	9.75
Crown Set Diamond Delta	70.00
Crown Set Diamond Delta, Diamond Center	75.00
Chased Kappa and Rho, Regula- tion Badge	\$1.50 extra
Sister Pin	\$1.00 extra
Pledge Buttons, each50
Recognition Buttons	
Monogram Gold Filled, each.....	1.00
Miniature Coat-of-arms, Gold, each	1.00
Miniature Coat-of-arms, Silver, each75

Jeweled badges may be engraved at no extra charge, providing a deposit of at least one-third of total amount accompanies the order. Instructions for engraving should be clearly printed. Check all names and dates carefully.

Proper official release must accompany your order to avoid delay in delivery.

Be sure to mention the name of your Chapter when ordering a guard for your pin.



ALL PRICES ARE SUBJECT TO 20% FEDERAL EXCISE TAX AND TO STATE SALES OR USE TAXES WHEREVER SUCH STATE TAXES ARE IN EFFECT

Send for Your FREE Personal Copy of "The Gift Parade"

PUBLISHED EXCLUSIVELY BY YOUR OFFICIAL JEWELERS

BURR, PATTERSON & AULD CO.

ROOSEVELT PARK

DETROIT 16, MICHIGAN

America's Oldest—and Most Progressive—Fraternity Jewelers