

FALL
1950

THE

QUILL

AND

SCROLL



OF KAPPA DELTA RHO

—
*You Don't Have
To Feel Like This* ➡



—
LIMITED EDITION
OF THE 1950 DIRECTORY READY SOON

RESERVE YOURS NOW!

TRIPLE LISTING OF 5600 MEMBERS.

\$1 *postpaid*

—
Send orders to

Directory — Quill & Scroll

443 Grove St.

Rahway, New Jersey

BOOK MATCHES

in

OFFICIAL COLORS, WITH OFFICIAL SEAL

BOX OF 50 - - - 50c postpaid

ORDERS SHOULD BE ADDRESSED:

Quill and Scroll

443 Grove St., Rahway, New Jersey



MEMBER OF THE NATIONAL
INTERFRATERNITY CONFERENCE

The QUILL and SCROLL



Official Publication of Kappa Delta Rho
Fraternity

Vol. XXXVI Fall 1950 No. 4

ACTIVES! IMPORTANT!

All actives are urgently requested to keep the editorial office, 443 Grove Street, Rahway, N.J. informed of any change of address, including transfers to other schools and induction into the Armed Forces.

We have one purpose in requesting you to keep in touch with us; we want you to get your QUILL AND SCROLL wherever you are. As far as we are able we will see that you get the latest news of your fraternity, but we must have an address to send it to.

As soon as your address or status is changed, let us know. We will keep our records up to date only with your help.

The Front Cover - John Cannady, former Indiana star, now with the New York Giants, as he looked when he played in the backfield.

FEATURED IN THIS ISSUE

Football-1950	2
'Youth on the Campus'	11
What Will Happen?.....	12
Strike three, you're out! ...	14
Directory	16

This issue is dedicated to all KDR football players who did not make it,- the scrubs.

DON WOLFE - Editor

Circulation this issue - 4950

Entered as second-class matter at the post office at RAHWAY, N.J.

Publication office: 443 Grove Street, Rahway, N.J. Published quarterly at the above office of publication. Subscriptions are available only to life members at \$10.00 each.

Notice of change of address should be given at least 30 days before date of issue. Give old as well as new address. Address all correspondence and contributions to the office of publication, 443 Grove Street, Rahway, N.J. Pictures will be returned upon request.



John Biltz (No. 66), Ohio State guard, in action in a Big Nine game.

Gridiron Greatness!

Many KDR's Star on the Gridiron during the 1950 Season

When the cheers die down and the Monday morning quarterbacks unloose the strategy that has won many a lost cause, the names of many Kappa Delta Rho's are on the lips of those who root frantically for their alma maters. Saturday after Saturday the teamwork of many elevens was bolstered by KAP's who contributed a small or a large part to the making of some 1950 team. At Ohio State, Illinois, Gettysburg, Penn State, Lafayette, KAP's played their parts on offense or defense, kicking or catching, blocking or tackling.

And then, as if that isn't enough on college gridirons, the names of KAP's again are heard on Sunday by radio when the professionals go into action. Cannady on defense, Rogel on offense, are familiar to all who follow big-time football. Just as they won fame at Indiana and Penn State these two stars are now thrilling crowds at the Polo Grounds or Forbes Field.

BILTZ HONORED

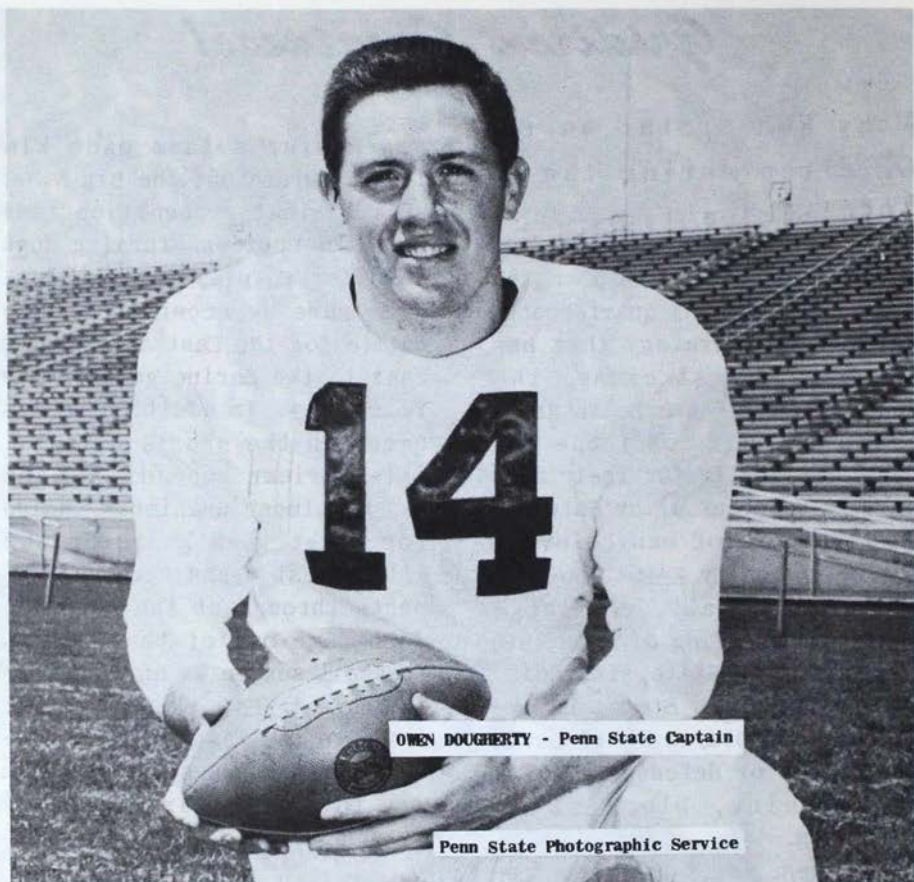
Recipient of most honors the past season was John Biltz, Ohio State guard, who was the first KAP to play in the Rose Bowl. His work on defense with

Wes Fesler's team made him feared throughout the Big Nine, so much that recognition came from all sources. Turning down an offer to play in the Blue-Gray game he accepted one to battle for the East against the West in the Shrine game on New Year's Day. In addition he was named on the sports writers' all-American second team and was an almost unanimous choice for first team guard on the all-Midwest teams named by experts throughout the country. John came out of the present football season as an outstanding guard. His record of two trips to the West Coast in succeeding years ought to stand in KAP for many years.

LETTERMEN

Not all were fortunate enough to play in the Big Nine but many earned their letters. Another KAP known in the Big Nine was Sammy Rebecca, Illinois point kicker, and one whom Ohio State will remember for a long time. Besides Sammy, lettermen in KAP included Ditty Jones and Larry Johnson, mainstays of the Gettysburg Bullets, Owen Dougherty and Pat McPoland of Penn State and Mel Everingham of the Lafayette Leopards.

Missing from the line-up is Bill Roggeman, last year's starting guard with the Purdue Boilermakers. It was a blow to



Purdue when Bill was drafted this last summer but he left his brother Tom to carry on the Roggeman name in Purdue football. Tom showed much promise, also as a guard, in this, his sophomore year. Look for him in the line-up next year.

Owen Dougherty-Captain

A versatile halfback, 'Doc' plays both offense and defense at Penn State. His all-around popularity must have earned him the captaincy of the Lions 1950 team for he is popular on campus as well as on the football

field.

Imagine an Irish tenor specializing in hillbilly ballads - that's 'Doc'! His voice is really tops in the KAP house and on the campus.

But he also plays football. Last year he led Penn State backs with a total offense of 519 yards in 81 attempts, a record that will make him sought after by several pro clubs. He is a senior and considers it his biggest thrill in life so far to be elected captain.

He had other records before that. For instance he was a 15

letterman in high school, four each for baseball, football and track, and three for basketball. He was an undefeated miler for four years; played in two American Legion All-Star games ('46, '47) in Shibe Park, Philadelphia; was an All-Scholastic gridder in the Scranton area ('46) and third team All-State.

His roommate last year in the KAP house was 'Punchy' Rogel, and together they ended up with much of Penn State's yardage. 'Doc's' 188 pounds is distributed evenly and his 5 feet nine inches makes him harder to tackle on the field.

He's a true KAP captain, totally unattached. No girl friend, but many who would like to be. As for 'Doc', he likes football and baseball.

Pat McPoland - end

Pat latched on to a defensive end position at Penn State when pre-season practice began and has held it ever since. He is the third of a line of Penn varsity greats in the past two years, Rogel, Dougherty and McPoland. He puts his 195 lbs. to good use as an end, thriving on contact. He's rugged.

The story goes that Pat always dreamed of playing in the backfield. After practice as an end he would rush over to join the fullbacks for a play or two before going to the locker room.

His chance came one day. Up to that day his team was undefeated. They lost that game 6-0.

On the opposing team was a young fullback named Rogel. It was a quirk of fate that they were later to play on the same team and live in the same KAP house. It was another bit of fate that while in boot camp in the Navy Pat met John Booth, now consul.

Pat started to school at Pitt but eventually transferred to State. He keeps his helmet on most of the time for his hair is prematurely gray. Pat says it 'all started in eighth grade'.



Sam Rebecca-place kicker

When Sam Rebecca trotted off the field after kicking a 24 yard extra point against Ohio State this season he wore a broad smile. That extra point was the high-light of his football career for that day Illinois defeated mighty Ohio State 14-7. Two points of the 14 were due to Sammy's reliable toe.

He also remembers a field



goal against Ohio State during the 1949 season, - and he is also proud of his 1950 record of 17 out of 19 extra points, his two misses being in games which Illinois won handily.

Sammy now reserves his toe for the Illini varsity. But he started his football career at West Rockford High School, playing quarterback for three years. He entered the University of Illinois in 1948.

As a sophomore Sam quarterbacked the Junior Varsity to a very successful season, losing but one game. In the middle of the season the varsity coach recognized his educated toe and promoted him to the position of place-kicker on the varsity.

Sam does a specialized job and does it well. KAP's and rooters for the Illini at Champaign are hoping that he will get plenty of work in 1951. When Sam trots on the field it means that Illinois has scored again. And Sam usually adds one more to the big board at the end of the field.

'Ditty' Jones - blocker

John R. Jones, Jr., otherwise 'Ditty', has played varsity football for three years, earning his letter all three seasons. In his sophomore year he was leading ground gainer for Gettysburg but since then has been used as a blocker, which he can do expertly. Last year as a punter he averaged 32.5

yards.

At Lansdowne Highschool he was captain of the football, basketball, and baseball teams. He also played all three sports at Friends' Central where he became an inseparable friend of Larry Johnson's. He also played freshman football at Gettysburg.

'Ditty' is a popular senior at Gettysburg. He, like Larry, also made Who's Who. He is one of three student representatives on the Athletic Council and is senior class president. Besides all this he is co-sports editor of the Gettysburgian, student newspaper.

'Ditty' plays second base on the varsity baseball team - but he still loves football too.

Larry Johnson and Ditty Jones, in that order, relax on the KAP steps after a strenuous afternoon on the practice field.

One thing is certain; he is one of Pi chapter's most popular and most famous athletes. AND Kappa Delta Rho is proud of all athletes like 'Ditty'.

Larry Johnson - end

Larry Johnson's blue eyes are sharp when he plays defensive end for the Gettysburg Bullets, for he loves to play football. He has been on the squad the past three seasons, earning his letter the last two. He played freshman football and basketball and is Head Dorm Counselor.

Larry played at Chester Highschool before attending Friends' Central, where he earned letters in football, basketball and track. He also became vice-president of the senior class.

Activity in Pi chapter is an-



other of Larry's fortes. He was president of the pledge class of 1948. This year he made 'Who's Who in American Colleges' an honor which he proudly shares with two other KAP's.

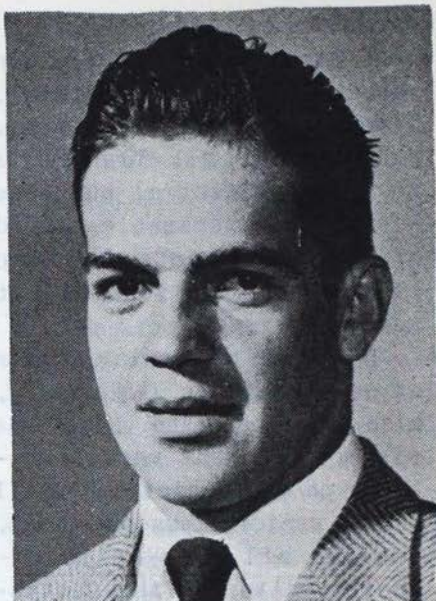
Defensive end does not offer many chances for scoring but Larry still contemplates with satisfaction the 6 points he scored this past season. He intercepted a lateral and ran for a touchdown against Johns Hopkins.

Mel Everingham - end

It's easy to play on a winning team but Mel Everingham can tell you how it feels to play with a Lafayette team that won but one game. Yet, week after week Mel was in there playing defensive end as if the national championship depended on his play.

Mel's collegiate athletic career hasn't been too fruitful. Last year in the second game of the season he suffered a shoulder break which kept him out for the remainder of the season. This year he stayed in there all season but saw his team win but once.

At Swedesboro (N.J.) High-school he was a four letter man - in football, basketball, baseball and track. He went to Lafayette for one semester then joined the Navy. He played two years of football with the Naval Air Corps, the Memphis N.A. T.T.C. Upon return to Lafayette he became defensive left end



and star javelin thrower on the track team.

Mel is 22 years old and married. His wife is his most ardent rooter, but she still remembers that broken shoulder.

John Cannady - Giant

When the New York Giants fought Cleveland in the pro playoffs last fall the captain of the Giant defensive team was none other than John Cannady, Indiana KAP. Defensive expert and line backer-up for the past four years, he is not unknown to those who listen to the radio broadcasts on Sunday afternoons. Many times can one hear the announcer say 'tackle was made by Cannady'.

John entered Indiana University from Owensboro, Kentucky High School in 1943. He began playing varsity ball that year and during his four years at



Fran Rogel is currently with the Pittsburgh Steelers. As he did in Penn State he plays fullback on offense. His State record was one to be proud of, but the day he remembers more than any other is the one on which he scored both touchdowns against a mighty Pennsylvania team that was picked to beat State handily.

Indiana he established himself as one of the most versatile players in the University's history. Believe it or not - he played center, guard, quarterback, fullback and right halfback. He became a center against Northwestern in 1945 and played a mean part in bringing the Big Ten title to Bloomington that year.

During 1945 and '46 John, together with Pete Pihos, gained the distinction of being the greatest pair of line backers in the long history of Indiana

football. As a result John was chosen All-Big Ten center in 1946 and was named on midwest teams and in various runner-up All-American teams of that year.

He entered pro football in 1947 and is just completing his fourth year with the New York Giants. His big game defensively with the Giants was when they shut out the Cleveland Browns 6-0 for the first time in the history of the Cleveland club. John contributed his bit to hold the Browns scoreless. He's always there when the play ends; he has an uncanny sense of knowing where the play is going - and he meets it head-on.

Squad Members

Alpha chapter does not have any stars on the Middlebury team but they boast of one thing; they have the biggest and the smallest man on the squad.

Tallest man on the squad is Jim McManus, a tackle from Riverdale, N.Y. who reaches skyward 6 feet 4 inches. Bruce MacKay is out for guard, but doesn't have to bend down on the line too far from his 5



Bruce MacKay

feet 7 inches. Bruce hails from St. Albans, Vt. Both he and Jim are sophomores.

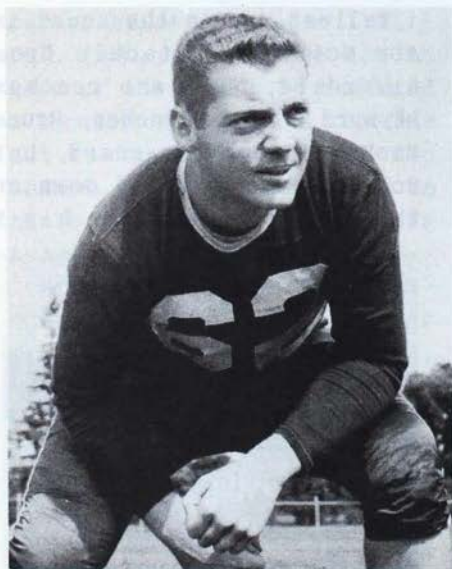
Theta chapter has three good prospects for the Purdue team of 1951. One starting guard of the Boilermakers, Bill Roggeman, was drafted last summer. He regrets that he couldn't help in the Notre Dame upset.

Tom Roggeman of Mishawaka, Ind. is out for guard at Purdue. Since he is only a sophomore he looks like a good prospect and much is expected next year.

Bill Knight was a member of the freshman team. From Schenectady, N.Y. Bill has had much experience before entering Purdue. While in the service he played for the Air Force at Randolph Field and Keesler Field. After his discharge he played one year in an independent league in Mississippi.

Another freshman player at

Jim McManus



Purdue this past season was Angelo Lombardo of St. Louis. In addition to being all-city halfback he also played baseball and basketball for Sol-dan-Blervett Highschool.

IS YOUR CHAPTER HERE?

Many sizeable contributions have been received for the LOYALTY FUND. The latest count finds RHO chapter alumni leading the pack with 15 contributors, and Lambda alumni in second place. The leaders, December 15, 1950:

RHO	15
LAMBDA	12
THE TA	10
NU	10

(Watch for the latest score in the next issue of *The Quill and Scroll*.)

ABOUT THE DIRECTORY

The directory was slated for completion during 1950. Because of the magnitude of the task, it is still in the process of being set up for the printer. We give this explanation to the many members who have been inquiring as to the date of publication. If work progresses at the present rate it should be in the hands of the printer some time during February. It will contain more than 200 pages and will list all members alphabetically, geographically, and by chapters. There will also be a complete list of members who have joined the chapter eternal.



Chicago Tribune photos by Andrew Pavlin

"Youth on the Campus" Features KDR's

Two members of Theta Purdue chapter were prominently pictured in the roto section of the *Chicago Sunday Tribune* last spring. The occasion was the annual Interfraternity ball at Purdue, sponsored by 35 campus fraternities as a climax to Greek week activities, and attended by 500 couples. It was held in the two huge ballrooms of Purdue Memorial Union.

The captions are given just as they appeared in the *Youth on the Campus* section of the *Tribune*:

(Top) Gene Patton, junior Kappa Delta Rho, Danville, Ill., and Edith Ann Row, a Pi Beta Phi pledge from Hammond, Ind.

(Right) Foursome at intermission. Left to right: Robert Baxter, Indianapolis, a visiting Beta Theta Pi from Indiana University; Charles Hardy, Kappa Delta Rho, North Liberty, Ind.; Jayne Burgoyne, Auburn, Ind.; and Jane Nickell, Purdue freshman, Indianapolis.



WHAT WILL HAPPEN?

Here's How Every Alumnus Can Help the Actives Meet the Present Challenge

A number of questions on the international scene gravely concern all of us, actives and alumni alike. Having been through the most recent war, we know how easy it is to drop our enthusiasm for our fraternity and fall into an easily rationalized lethargy awaiting the 'inevitable' evacuation of campus hill.

The last war has taught us many lessons. Through our neglect houses were allowed to deteriorate and as alumni we were asked to 'cough up' just twice as much for repairs afterwards as we would have if we had spent just a few minutes checking on our houses every so often. Every alumnus can see the wisdom of the stitch in time when it comes to repairs on a house.

This time we want to plan with calm deliberation; to be prepared for any emergency. We want to have all alumni briefed as to their part in conserving the assets of our fraternity, both tangible and intangible.

A definite plan has been proposed to all actives in the latest (January) issue of THE SENTRY. All active chapters having houses are asked to take certain steps to prepare for any emergency that may take place. What the future holds we do not know. Optimists estimate that military training will take at most 25% of the male students in college; pessimists give figures all the way from 40% to 65%. If the former is true we do not have much to fear, but if the latter is correct we have many affairs to take care of in our active chapters.

At this writing some 50 KDR's have left college for the military services. Statistics say that the drop in male enrolment this year is about 15%. Both of these facts substantiate the fact that we must plan for the best disposition of our houses. We cannot afford again to let a million dollars worth of property deteriorate the way it did by the end of World War II.

We are proposing the following definite jobs for the alumni, all of which will contribute mat-

erially to the future well-being of both actives and alumni:

1. All alumni living in a city where a chapter is situated should contact as soon as possible the officers of the chapter to ascertain the status of of the chapter NOW. From this report the alumnus can determine future action, but he should accept the responsibility of keeping in touch with the house periodically (at least twice a semester) to determine any change in personnel and finances. OF YOU ARE NOT A MEMBER OF THAT CHAPTER PLEASE ACCEPT THE RESPONSIBILITY JUST AS IF YOU WERE. A MEMBER OF ANOTHER CHAPTER WILL DO AS MUCH FOR YOUR CHAPTER.

2. Chapter Consuls have been asked to keep in close contact with Corporation and Alumni Association presidents. If they do not contact you soon, then you do the contacting. They may be busy taking exams, or even being inducted.

3. Notify any chapter of any good men going to that school from your home town. Rushing becomes increasingly difficult with a drop in enrolment and your leads may help them to keep the house full and thereby stay out of the

red.

4. When you visit a house ask pointed questions about their finances. Do not hesitate to ask pertinent questions which will help you to determine if they are up to par or sliding backward through increasing difficulties in getting pledges.

5. Contact the KDR house immediately upon the opening of school this fall. Get an accurate picture of the situation so you can plan any future action accordingly.

6. Alumni not too far from their chapters should plan to visit their houses from time to time, if for nothing more than to give moral support to the actives who are trying to keep things going. They need your support NOW worse than they need your contribution after the house falls down.

**HAVE
YOU
CONTRIBUTED?**

Strike three, you're out!

By Marvin Shiro

This cry prevailed throughout that glorious day, the 27th of May when Eta, Kappa and Theta chapters gathered at Epsilon for a softball tournament.

Epsilon for a softball tournament. Nu was invited but could not attend because of final exams. After the smoke of battle had cleared Epsilon had emerged victorious with Eta the runner-up.

The festivities began Saturday afternoon when Epsilon opened the tournament against the team from Kappa. Epsilon had no trouble in disposing of the Kappa threat. The second game

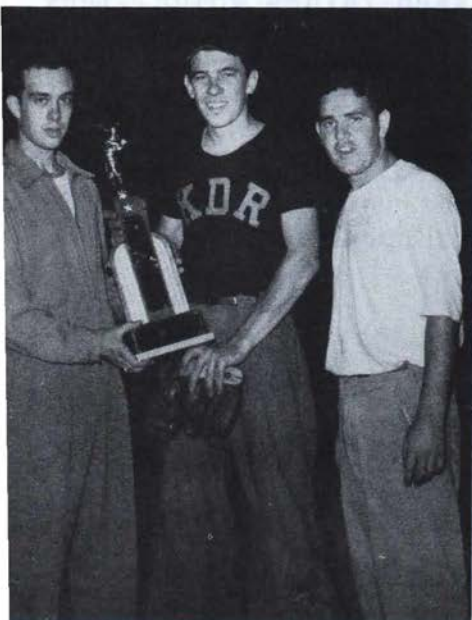
Epsilon's Intramural Manager Jake Moffett presents the softball trophy to Epsilon's Consul Dick Pool as Eta's Sam Rebecca watches.

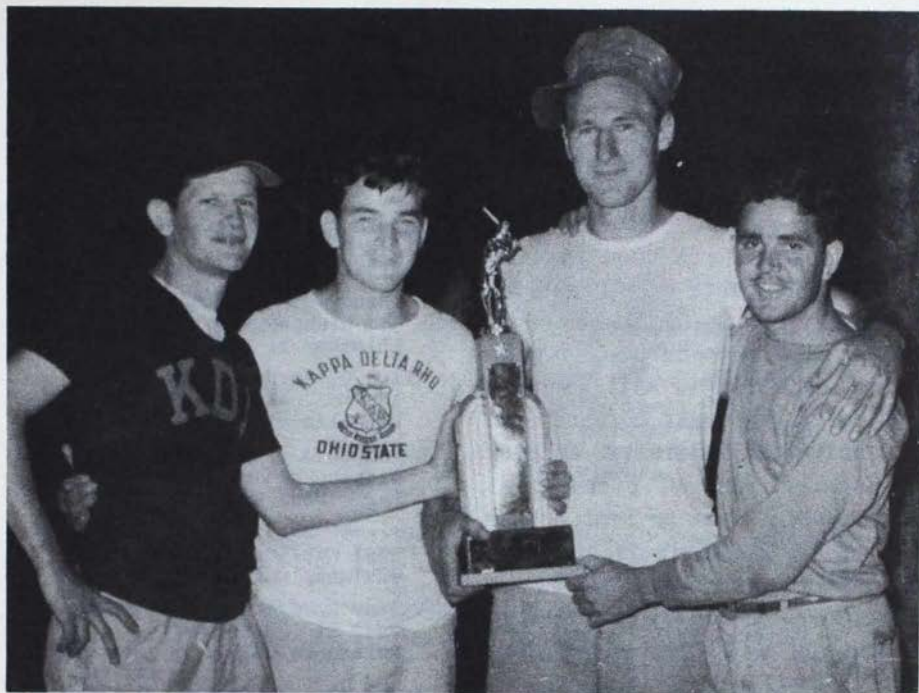
between Eta and Theta was held up because Eta had not arrived. Twenty minutes later the Eta team arrived and the game was on. Eta edged Theta in a very close and thrilling game.

The finals were scheduled for 7 and 8:15 that evening. After the games in the afternoon a buffet lunch was served to all team members. In the consolation game Theta took the measure of Kappa in a wild and woolly game. The stage was set for the final championship game. The winner would take home with them an enormous trophy emblematic of softball supremacy. In a very tight and hard-fought game Epsilon came out victorious in the first Mid-west KAP Softball Tournament.

TOURNEY HI-LIGHTS!

The boys from Kappa brought along with them Gordon El-dredge...When the boys from Eta prepared to return home the following morning they were delayed by a downpour. So necessity being the mother of invention, Smitty from Eta, borrowed a couple of sheets and coated them with wax. The sheets were then put over the top of the truck to keep the boys dry and they were off...The meeting room of Epsilon was turned into a dorm for the boys from Eta... Theta went home right after the consolation game in the even-





Epsilon's Gene Gurthet, Kappa's Bob Clouse, Theta's Walt Wittholz, and Eta's Sam Rebecca hold trophy which went to the winning chapter. Epsilon was host for the First Mid-west Softball Tourney, and the winning chapter.

ing...Kappa arrived for the tourney Friday night and they roomed out with the Epsilon boys...After all the chapters had departed, Epsilon members looked around and gave a weary

sigh, but when they looked at the trophy over the fireplace they knew very well that it was worth it...The site of the tourney for 1951 has not yet been announced.

25th for Indiana Nu

Elaborate preparations are being made by NU chapter for the 25th anniversary of the installation of Sigma Eta Chi into the national of Kappa Delta RHO. April 9, 1926 saw 25 men with Dr. Paul Sayre as faculty adviser initiated into KAP and NU installed as the 13th chapter in the national organization.

All alumni have been extended a special invitation to return for the festivities that are promised to surpass any NU celebration of the past. A special attempt is being made to have Dr. Joseph Todd, guiding spirit of Sigma Eta Chi, and Dr. Paul Sayre, the first faculty adviser of Kappa Delta Rho present for the special program.

Chapters Will Pick National Sweetheart

KAP will have a queen this year! Final arrangements have been made by Henry Uhlenhop, author and promoter of the contest, and all chapters have been invited to nominate their most beautiful co-ed KAP for the national honor.

The requirements are simple. First, each chapter will nominate one co-ed, who must be attending the university where the chapter is located. Second, pictures of the beauties must be sent to the judges for preliminary judging. Third, after elimination of most of the contestants, the chapters will vote on the finalists.

It is hoped, with the cooperation of all chapters, to have the final votes in by the end of March so that the winner can receive recognition at a spring formal.

Two judges have accepted the difficult assignment of acting as Paris to the KAP Venus's. Warren Young, assistant editor of LIFE, will act as judge of KAP pulchritude. The other one will be Don Wolfe, a substitute, who will judge the beauty that his KAP actors in college never mention in the *Quill and Scroll* write-ups.

Directory

OFFICERS AND DIRECTORS

Pres. - John L. Blakeley (1956)
420 West 24th St.
New York 11, N.Y.

Vice-pres. - E. Mayer Maloney (1954)
5317 Graceland Ave.
Indianapolis 8, Ind.

Treas. - Donald G. Leach (1956)
4 Locust St.
Madison, Maine

DIRECTORS

Harold H. Brelsford (1952)
211 State St.
West Lafayette, Ind.

Gordon Eldredge (1952)
511 Olentangy St.
Columbus 2, Ohio

Alton R. Snyder (1952)
565 No. Walnut St.
Franklin, Ind.

Bernhard A. Priemer (1954)
9 West Hudson Ave.
Englewood, N.J.

Merle W. Garing (1954)
2561 Carisbrook Drive
Oakland, Calif.

Walter E. Garman, Sr. (1956)
3513 St. James Road
Baltimore 7, Md.

ALTERNATE DIRECTORS

George E. Shaw
220 Broadway
New York 7, N.Y.

Oscar L. Doud
4323 Gloster Road
Dallas 9, Texas

G. Morris Robertson
945 No. 34th St.
Corvallis, Oreg.

EXECUTIVE SECRETARY

Ferd B. Ensinger, Jr.
15 Field End Lane
Tuckahoe, N.Y.

FIELD SECRETARY

(West Coast)
Hugh S. Penman
2250 Piedmont Ave.
Berkeley 4, Calif.

SCHOLARSHIP COMMISSIONER

Dr. Robert J. Crosen
901 McCartney St.
Easton, Pa.

FINANCIAL ADVISER

Fred G. Harrison
Bank of Herrin
Herrin, Illinois

CONTROLLERS

Orrin G. Judd
39 Broadway
New York 6, N.Y.

Leo T. Wolford
1711 Ky. Home Life Bldg.
Louisville, Ky.

ALUMNI COMMISSIONER

Walter E. Garman, Sr.
3513 St. James Road
Baltimore 7, Md.

NATIONAL HISTORIAN

George E. Shaw
220 Broadway
New York 7, N.Y.

NATIONAL CHAPLAIN

The Rev. Harold F. Lemoine
9910-217 Lane
Queen's Village, L.I., N.Y.

COMMITTEE-CONSTITUTIONAL REVISION

George E. Shaw, chairman
H. Guy Erb
Roswell W. Corwin
Orrin G. Judd

COMMITTEE-PUBLICATIONS

John O. Boyd, chairman
George E. Shaw
Ferd B. Ensinger
Don C. Wolfe

Zeta-Pennsylvania State College
Consul-John Booth
Propraetor-William Molloy, Jr.
420 E. Prospect Ave.
State College, Pa.

Eta-University of Illinois
Propraetor-Henry Uhlenhop
1110 South Second St.
Champaign, Ill.

Theta-Purdue University
Consul-John C. Carl
Propraetor-Arthur Bonneau
1134 Northwestern Ave.
West Lafayette, Ind.

Iota-Bucknell University
Propraetor-Bob Boland
120 South Sixth St.
Lewisburg, Pa.

Kappa-Ohio State University
Propraetor-Chuck Heitsman
1985 Waldeck Ave., Columbus, O.

Lambda-University of California
Consul-Clyde LaJeunesse
2250 Piedmont Ave., Berkeley 4.

Nu-Indiana University
Consul-Dick Loges
Propraetor-Gerhard Koehlinger
814 E. Third St., Bloomington

Xi-Colby College
Consul-Schuyler Mott
Propraetor-William Thompson
Waterville, Me.

Pi-Gettysburg College
Consul-Howard Humphrey
Propraetor-Richard Lippert
Gettysburg, Pa.

Rho-Lafayette College
Consul-Morry Albertson
Propraetor-Harry Bahr, Jr.
Easton, Pa.

Sigma-Oregon State College
Consul-Graeme Duthie
Propraetor-Paul Brockneier
140 N. 23rd St., Corvallis

Upsilon-Fresno State Teachers
Consul-Carl Muehlberg
1035 Harvard Ave., Fresno, Calif.

Phi-University of Oklahoma
Consul-Jim Lontos
Propraetor-Philip Dittmar
1008 Monnett Ave., Norman

Chi Colony-University of Florida
13 N.W. 11th St.
Gainesville, Fla.

Chapter directory

Alpha-Middlebury College
Consul-Jack Cran
48 South St., Middlebury, Vt.

Beta-Cornell University
Consul-Douglas LeRoy
301 Eddy St., Ithaca, N.Y.

Gamma-Albany State Teachers
Consul-James Dunn
Propraetor-James Corsetti
465 State St., Albany 6, N.Y.

Delta-Colgate University
Consul-Robert Kienzie
Propraetor-Warren Baumgartner
Hamilton, N.Y.

Epsilon-Franklin College
Consul-Richard Pool
Propraetor-Arthur Lucas
801 E. Jefferson St.
Franklin, Ind.

KAP ALUMNI and ACTIVES

Order Your Jewelry Direct from This Page

KAPPA DELTA RHO

Official Badge Price List

REGULATION

Crown set Whole Pearl Delta.....	\$ 12.50
Crown Set Whole Pearl Delta, Garnet Points	12.50
Crown Set Whole Pearl Delta, Ruby Points	13.75
Crown Set Whole Pearl Delta, Diamond Points	35.00
Crown Set Whole Pearl Delta, Diamond Points, Diamond in Center of Delta	45.00
Crown Set Whole Pearl Delta, Ruby Points, Diamond in Center of Delta	27.50
Crown Set Whole Pearl Delta, Ruby Points, Ruby in Center of Delta	15.50
Full Diamond Delta	100.00
Full Diamond Delta with Diamond in Center of Delta	115.00

GUARD PIN PRICES

	Single Letter	Double Letter
Plain	\$ 2.25	\$ 3.50
Crown Set Pearl	6.50	11.50

COAT-OF-ARMS GUARDS

Miniature, Yellow Gold	\$ 2.75
Scarf Size, Yellow Gold	3.25

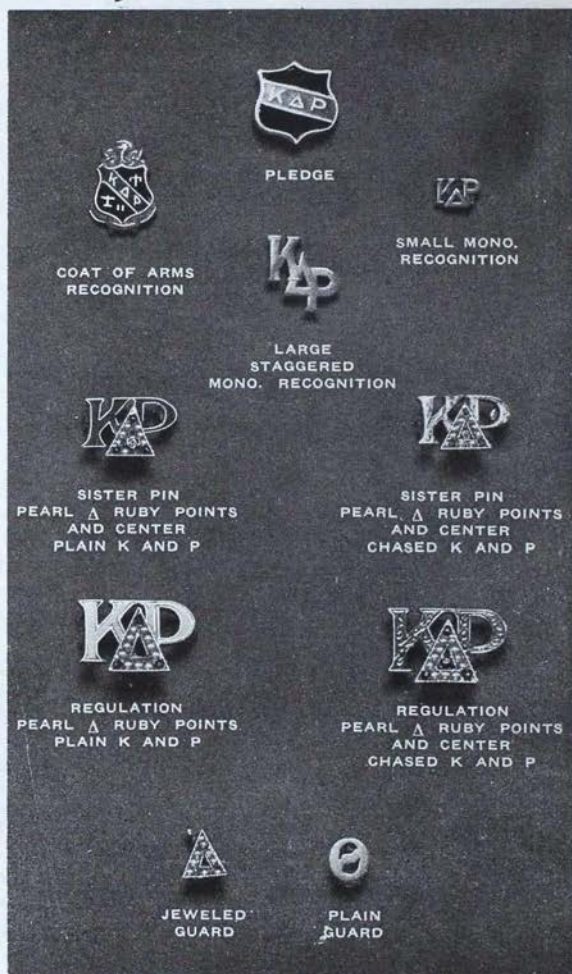
SISTER PINS

Crown Set Whole Pearl Delta, Garnet Points	\$ 8.75
Crown Set Whole Pearl Delta, Ruby Points	9.50
Crown Set Whole Pearl Delta, Ruby Points, Ruby Center of Delta	9.75
Crown Set Diamond Delta	70.00
Crown Set Diamond Delta, Diamond Center	75.00
Chased Kappa and Rho, Regulation Badge	\$1.50 extra
Sister Pin	\$1.00 extra
Pledge Buttons, each50
Recognition Buttons	
Monogram Gold Filled, each	1.00
Miniature Coat-of-arms, Gold, each	1.00
Miniature Coat-of-arms, Silver, each75

Jeweled badges may be engraved at no extra charge, providing a deposit of at least one-third of total amount accompanies the order. Instructions for engraving should be clearly printed. Check all names and dates carefully.

Proper official release must accompany your order to avoid delay in delivery.

Be sure to mention the name of your Chapter when ordering a guard for your pin.



ALL PRICES ARE SUBJECT TO 20% FEDERAL EXCISE TAX AND TO STATE SALES OR USE TAXES WHEREVER SUCH STATE TAXES ARE IN EFFECT

Send for Your FREE Personal Copy of "The Gift Parade"

PUBLISHED EXCLUSIVELY BY YOUR OFFICIAL JEWELERS

BURR, PATTERSON & AULD CO.

ROOSEVELT PARK

DETROIT 16, MICHIGAN

America's Oldest—and Most Progressive—Fraternity Jewelers