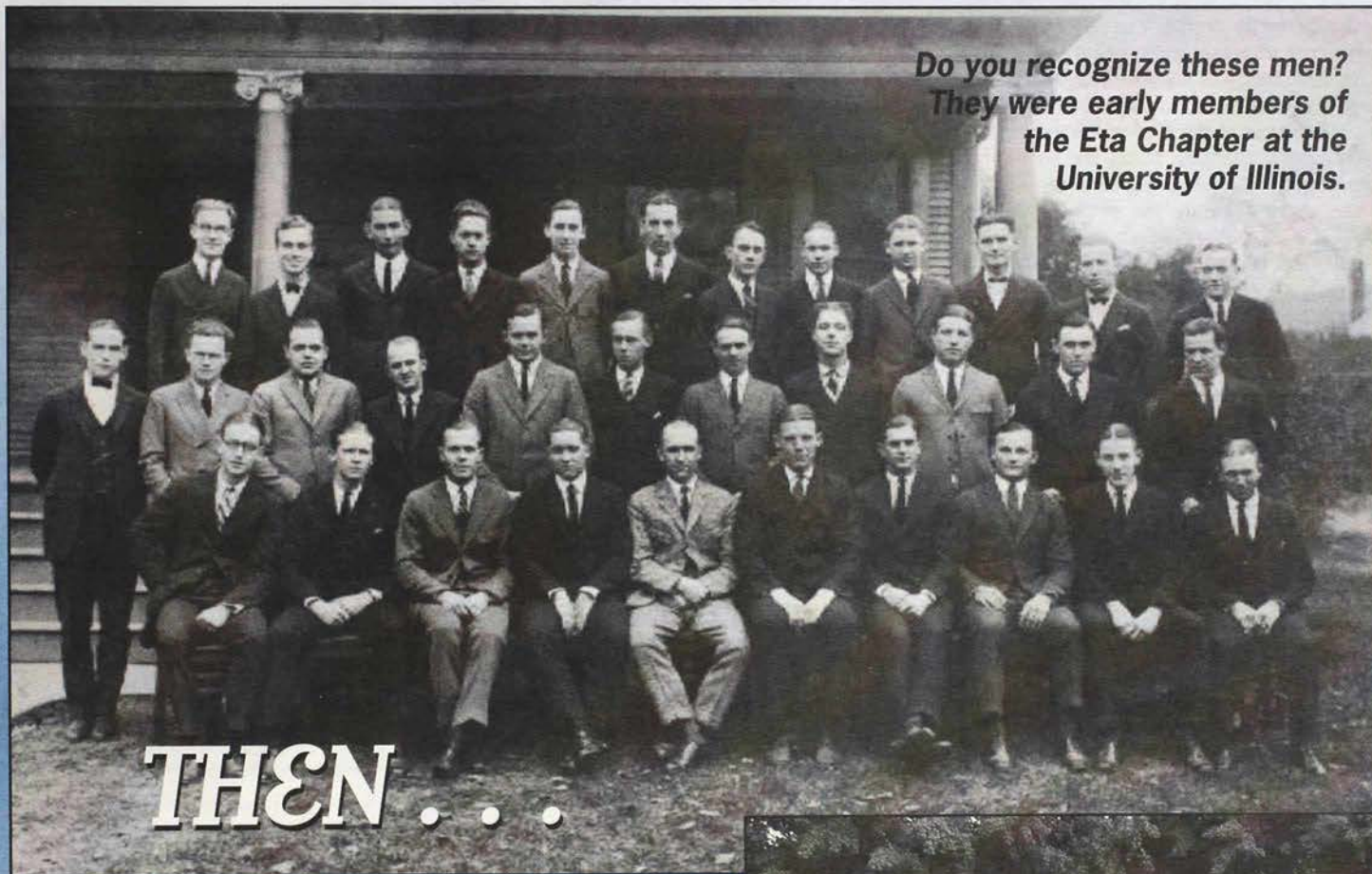


Quill & Scroll

SUMMER 2000

THE MAGAZINE OF KAPPA DELTA RHO



Do you recognize these men?
They were early members of
the Eta Chapter at the
University of Illinois.

THEN . . .

& NOW.

INSIDE:

Regional Conclaves

Chapter News

National Fraternity Expansion

Vision 2000 Update

Archive Photos Identified



Members of the Eta Alpha Chapter at Robert Morris College in Pittsburgh, PA.

From the President

As we approach the completion of my second year as Fraternity President I can report that we are building positive momentum and making measurable progress in key areas that are crucial to building the health and strength, that we all desire, in our organization. Of course all days are not "good ones." That is one of our challenges, and we have many — most known and, I'm sure, some that we are unaware of today.

In 1998 we left the convention stating that we would concentrate our efforts to strengthen the three legs of our fraternity "stool" — chapters, alumni and national office — and would do so simultaneously. The basis is that fraternity strength can only come from significant progress, and in some cases considerable change. It comes through raising our "bar of expectations," in each of these areas.

This issue of the *Quill and Scroll* reports on progress, changes, status and some of the challenges in strengthening our three designated areas of priority. We, of the national organization, are, and will continue to be, responsible and accountable for obtaining the results necessary to acquire and retain that strength. Of course, paramount in everything we do, at all levels, is to provide quality and timely customer service.

If you get the impression that we have our "plate full," you are absolutely right. However, there is no doubt in my mind that we will complete the journey successfully and we will have fun on the trip.

Although we are a fraternity, there are many aspects of what we do that must be treated in exactly the same manner that you would handle a business. One area that this pertains to is data. To operate effectively we need to acquire, record and track key data.

It's the old story of "if you don't know where you've been and if you don't know where you are, then how do you know how to get where you want to go." Building an accurate database and data history is one of our current challenges. As we are able to see trends and changes in data we become more and more proactive, and less reactive.

I frequently communicate with alumni, chapter officers and Greek advisors, and if you would like to pass something along to me or chat about KDR, feel welcome to contact me at my email address listed below. Also, don't forget to check our website periodically. It is now getting over 2000 user sessions per month, and it is also a good place to list your email address with your chapter.

We have several Alumni Social events coming up — Philadelphia in August and Washington, DC in November. I know you will want to attend at least one of these if you live anywhere near. Keep in mind — no fund raising, no black tie, you don't have to remember the Greek alphabet — just come and enjoy yourself. With regard to alumni events, Philadelphia will be number 14 for me over the last several years, and I've had fun at each — I'm sure you will too. Hope to see you soon.

Fraternally,
Bob Swinney, Sigma '58
President

bobswinney@erols.com



From the Executive Director

UPDATE ON NATIONAL FRATERNITY PRIORITIES

For two years the National Fraternity has been working on strengthening each of the three legs of the KDR stool — Chapters, Alumni and the National Office.

Now, we would like to update everyone on our progress.

In each of the three sections of this update you will find progress items and continuing challenges for the National Fraternity.

The National Fraternity will proceed with priority areas that continue to build health in to each of the three legs of the KDR stool. We have made a lot of progress over the last two years and we will continue to address our challenge areas — we will be successful!

Fraternally,
Christopher B. Miller, Tau Alpha '97
Executive Director



MAILBAG *cont. on page 13*

George O. Way, Alpha Alpha '77, Inducted into Lock Haven University Wrestling Hall of Fame.

On February 19, 2000, Brother George Way was inducted into the Lock Haven University Wrestling Hall of Fame. George began his wrestling career in the Williamsport Area School District where he wrestled for Pennsylvania Hall of Fame member Hank Green and Dick Connor (both Lock Haven Grads). During his senior year he earned a District 4 title, a Northeast Regional title and a fourth place medal in the PIAA State Championships. George then attended and graduated from Lock Haven University where he served as the team's co-captain for two years. During his college career, he was a four time Pennsylvania Conference place winner (twice a gold medallist) and a three-time NCAA Division I qualifier. He was an Eastern Regional Champion in 1975, and a two-time EWL runner-up. Upon graduation, he held the record for the most number of dual meet victories (56) and was second in career wins (93) at Lock Haven. George was also voted by his teammates over his four-year stint as Outstanding Freshman, Outstanding Wrestler (3 times) and Most Inspirational Wrestler. While at Lock Haven George served as Junior Tribune at the

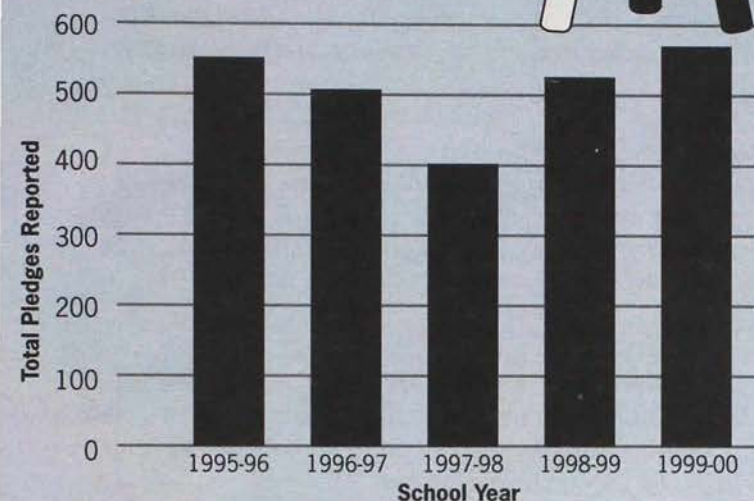
Alpha Alpha Chapter where he was a member from 1974-77.

After graduation, George coached for twenty-one seasons, eighteen as head coach where he amassed an overall record of 210-103-5. Over those years as a head coach he coached over 30 sectional champions, 31 state qualifiers, 16 state medallists and 5 state champions. Most notably while at Manheim Central High School his teams finished in the states top ten four times at the PIAA Championships. His teams also won numerous league, sectional and district titles. George was voted both league and District III Coach of the Year twice. George was also active in the sport as President of the District III and Pennsylvania State Wrestling Coaches Association. He is a member of the Pennsylvania District III Hall of Fame as well as his most recent induction at Lock Haven. Many of his wrestlers have continued their education at the college level and 28 have continued wrestling in college. Several are currently coaching today including the current staff at Manheim Central.

George is currently an elementary school principal in the Manheim Central School District and resides in Lititz, PA with his wife of twenty years Pam, and their three daughters Kellye, Georganne and Meredith.

I. BUILD HEALTH AND STRENGTH IN OUR CHAPTERS

RECRUITMENT



REGIONAL CONCLAVES

1998/1999	28 Chapters	120 Students
1999/2000	36 Chapters	233 Students

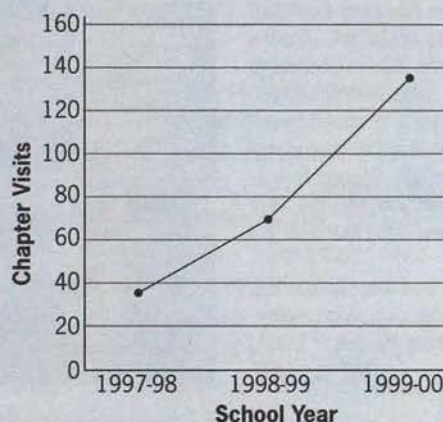
CHAPTER VISITS

Increased in number:

(see chart at right)

Increased in effectiveness:

- Specific visit objectives set prior to each visit
- National Fraternity goals are advanced through each visit
- Attainment of objectives evaluated after each visit
- Follow-up to ensure goals are being pursued by the chapter between visits



LEADERSHIP ACADEMY AND NATIONAL CONVENTION

Complete renovation of programming to emulate the most effective leadership education models available today. Over 90% of attendees indicated they would recommend the program to future undergraduates.

CHALLENGES

Chapter finances and inappropriate behavior continue to regularly face us. Even though recruitment numbers have been increasing each year for the last two years, our number of returning active brothers has been decreasing. This trend will reverse itself this coming fall as the number of students joining in the last two years has just surpassed the number of graduates.

(continued on next page)

From the Archives	4
Alumni Affairs	5
Regional Conclaves	6-7
Foundation News	8
Eminent Architect from Lambda Chaper Passes Away	12
New Chapter Expansion	12
Chapter News	14-18
Chapter Eternal	18
Directory	19

Quill and Scroll (USPS 605-402), an educational journal, is published two times a year by Kappa Delta Rho, Inc., 331 South Main Street, Greensburg, PA 15601. Forward all correspondence, manuscripts, and changes to the National Office.

EXECUTIVE EDITOR: Christopher B. Miller, Tau Alpha '97

ASSOCIATE EDITOR: Jonathan H. Lay, Mu Beta '99

CONTRIBUTING EDITOR: Paul A. Downes, Gamma '68

KAP

NATIONAL OFFICE

331 SOUTH MAIN STREET
GREENSBURG, PA 15601
1-800-536-5371 • www.kdr.com

FRATERNITY

Christopher B. Miller

Executive Director

Chris@kdr.com

Extension 12

Suzanne M. Balash

Office Manager

Sue@kdr.com

Extension 10

Scott A. Johnson

Director of Programming and

Member Services

Scott@kdr.com

Extension 13

Wm. Scott Bradley

Programming Coordinator

Bradley@kdr.com

Extension 17

Jonathan H. Lay

Programming Coordinator

Jon@kdr.com

Extension 14

FOUNDATION

Patrick Uram

Assistant Director of Gift

Planning and Development

Patrick@kdr.com

Extension 15

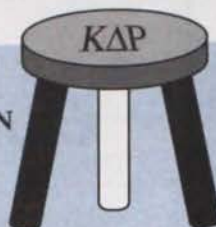
VISIT OUR WEBSITE!

www.kdr.com

Read the latest KDR news!

Locate other brothers'
e-mail addresses!

Update your contact information!



II. BUILD INTEREST AMONG THE ALUMNI IN THE "CONTINUATION OF BROTHERHOOD"

NATIONAL ALUMNI EVENTS

- 4 events held with 245 total attendees
- 2 upcoming events — Philadelphia and Washington, DC

CHAPTER ALUMNI EVENTS

Staff and national volunteers have participated in 20 chapter specific alumni events over the last two years with nearly 1,300 attendees.

ALUMNI CORPORATION SERVICES

Increased services available to dues paying alumni corporations and now provide:

- \$11 million in liability insurance coverage per corporation (see policy for details)
- Publication of newsletters and sending of announcements

- Participation for 1 alumni corporation delegate to the Leadership Academy and National Convention
- Assistance with alumni corporation operations planning
- Address and directory services to alumni corporations
- Alumni programming at convention to begin August 2000.

CAREER NETWORKING

5 events held over the last two years with a total of 142 attendees

1 upcoming event at the annual convention meeting in Philadelphia

CHALLENGES

Even though the number of brothers participating in national alumni events may be impressive, it is still a very, very small percentage of the brothers in the immediate area of the event who are invited.

FROM THE ARCHIVES



Rho Chapter Football

Gary Paton '63, Russ Davis '64, Charles Corson '64 and Ed Curtis '62 responded to this photo request.

First Row L-R: Gary Paton '63, Unknown (center) and Dave Bilheimer '61. Second Row L-R: Bill Murdock '63, Lynn Johnson '64, Bob Cucinell '63 and John Martens '63



Delta Chapter Living Room

Jeff Jensen '65, Joe Losquadro '64 and Glenn Mease '64 were able to identify all but one of the brothers in this photo.

Front Row L-R: Al Whipple, Dick Burke, Glenn Mease, Pete Whipple, Unknown. Middle Row L-R: Gary Smith, Tony Michaels, Jim Oestreich, George Quackenbos, Henry Malarkey, Don Smith. Back Row L-R: Al Sundberg, Joe Losquadro, Tom Bacchetti, Art Weber, Greg Auleta, Tom Martin, Ted Mallory

The photo was of the class of 1964. It was probably taken in the spring of 1961 before the pledge banquet.

Apparently, the center was Jim Marlatt '63, William Lowe '62 or a Delta Upsilon brother. The picture was either from the fall of 1961, 1962 or 1963.



Theta Chapter Founders

This picture was probably taken in 1921 in front of the original Theta chapter house. The second from left and middle brothers in the front row were real brothers — twins, in fact. They were Dale Owen Tomey (on the left) and Gale Hastings Tomey.



Omega Chapter Walk to Pittsburgh

Contributing to the identification effort were Melanie Wardrop and Dan Wardrop '78, sister and brother respectively of Herb Wardrop '73, Bob Mitchell '71, Ken Ruffner '72 and Bob Lee '74. There was some disagreement about the exact year that it was taken, but it was definitely in 1971 or 1972. The picture was taken in what used to be the KDR house behind Cogswell Hall. This was the largest response ever received from one of the "From the Archives" photos.

The brothers in the photo are:

Front Row L-R: Pat Riley, Joe DiNapoli, Dave Dickey and Tim McDonald. Second Row L-R: Joe Raglani (pointing to sign), Mike McCurdy (face only partially shown), Dick Knapko, Buddy Burke, Dan Brownlee (holding can) and Bob Lee. Third Row L-R: Ken Ruffner, Larry Greenberger and Paul Jankowski. Fourth Row L-R: Ken Hue (head tilted), Jim Klipa and Joe Olish (holding sign). Two brothers behind and on either side of Jim Klipa are John Sekusky and Jim O'Keiff.

The six visible faces across the top of the picture from L-R are: Bob Merriner, Tony Lenze, Ken Vinton, Herb Wardrop, Dennis Leahey and Paul Charlson.

III. BUILD STRENGTH IN THE NATIONAL OFFICE

COMMUNICATION

- Email added for all staff
- Cell phones for traveling staff
- All chapter officers email contact information used to send emails to specific functional segments, i.e. all presidents or all treasurers
- KDR List-serve
- KDR Website

STAFFING

Restructured processes and responsibilities to minimize the amount of administrative staff and maximize the amount of staff available to visit with chapters and plan programs.

INTERNAL PRODUCTIVITY/IMPROVEMENTS IN RESPONSIVENESS

- General cleanliness and organization



- Plaque/Pin member registration process overhaul
- Cut in half the backlog and collection of membership registration information

MEASUREMENT AND ACCOUNTABILITY REPORTING

- Staff and Board set measurable goals
- Performance is evaluated systematically
- Goals and objectives are revisited to determine applicability on a regular basis

CHALLENGES

Creative technological investments have been made to maximize the National Office's contact with the membership. However, continuous improvements in this area become exponentially budget prohibitive as we progress. In addition to maximizing the effectiveness of the staff that we currently have, it is necessary to develop funding to add any additional staff persons.

Vice President for Alumni Affairs/ Alumni Affairs Committee

A little over two years ago the Board of Directors of AKDR established the Alumni Affairs Committee. The charter was simple — "Make alumni aware that brotherhood does not end after college". KDR is a lifetime commitment. It is the continuation of brotherhood. In this short time, many positive changes have taken place and the future looks more promising than ever for alumni.

This past year brought several alumni events around the country that were well attended and more of these events are being planned currently. Some of these future events include Philadelphia (August 11th) and Washington, DC (Fall 2000). Keep checking the KDR Homepage under alumni events for more details. If your chapter is holding an event and you want to publish it on the KDR Homepage (www.kdr.com), please contact the National Office.

We continue to get requests from alumni who want to get involved at the local and national level. This year we have asked several alumni with diverse backgrounds from around the country to help put together a document/road map on the in's and out's of alumni relations and corporation operations. We are putting the first draft together between now and convention with the goal of sharing it with alumni and adding to it as necessary.

Speaking of convention, many of you have asked for more programming at convention. At least two sessions will be tailored specifically for alumni at this year's convention. One of the biggest areas of concern you have told us about is the relationship (good and bad) between alumni and undergraduate members. There will be a panel discussion on that subject as well as a presentation on what KDR National can do for alumni corporations today. We will be asking for your suggestions and ideas for future programming.

With all of these projects underway, we still need support from individual alumni and corporations. There are many ways to get involved. Each one of the active alumni corporations pays to send an alumni delegate to Convention, but many of these groups do not take advantage of it. The convention is one of many ways to help build stronger alumni relations. With the Information Highway playing a large role in most of our lives, it is easier for us to exchange information with each other, whether it is examples of newsletters, budgets or housing contracts. The Internet is not the answer for everything, picking up the phone and calling another alumnus or checking in on the chapter can go a long way too.

I would like to encourage every alumnus to help in some way in the "continuation of brotherhood".

Mark S. West, Upsilon Alpha '90
Vice President for Alumni Affairs



Attendees at the Denver, CO Alumni Social. From left to right: Scott Johnson, Phi Alpha; Jerry Stebbins, Phi Alpha; Janet & Bob Lynd, Iota; Greg Gehring, Nu and Bob Swinney, Sigma.

SOUTHERN CONCLAVE



Programming Coordinator Scott Bradley leads the South Conclave through a risk management workshop.



2000 South Regional Conclave attendees at the Sigma Beta Chapter in Greensboro, NC.

Sigma Beta Chapter - University of North Carolina/Greensboro, Southern Conclave Host

- Tau Alpha - Radford University
- Epsilon Beta - Old Dominion University
- Lambda Beta - James Madison University
- Upsilon Beta - Clemson University
- Phi Beta - College of William & Mary
- Chi Beta - University of Charleston
- Omega Beta - University of North Carolina/Asheville

THE 2000 REGIONAL CONCLAVES were a model of continuous improvement; 233 members from 36 chapters participated this year — a 94% increase in attendance over last year! Brothers who attended both this year and last year also noted a marked improvement in the programming.

Each of the five Regional Conclaves was held during the month of February and consisted of interactive workshops focusing on confrontation skills, financial management, officer transitions, scholarship, risk management and membership motivation and retention.

Through an educational grant from The Kappa Delta Rho

Foundation, there is no cost to the chapters and each may send up to 10 participants. The Regional Conclaves are a key tool in affecting the performance of our chapters. Most importantly, the undergraduates learn from their peers in other chapters — sharing solutions to the challenges that every chapter faces.

Once again, the Ratti Stone “went on tour” for the Conclaves and was passed around the groups for photos and a chance to see a part of KDR’s rich history. There is nothing like the first time an undergraduate sees the Ratti Stone and finds a connection back to the founding days of 1905.

EASTERN CONCLAVE

Iota Chapter - Bucknell University, Eastern Conclave Host

- Rho - Lafayette College
- Psi - Lycoming College
- Alpha Alpha - Lock Haven University
- Eta Beta - West Chester University
- Omicron Beta - William Paterson University
- Psi Beta - East Stroudsburg University



East Conclave participants discussing various topics in a small group breakout session.

NORTHERN CONCLAVE

Mu Beta Chapter - Syracuse University, Northern Conclave Host

- Beta - Cornell University
- Delta - Colgate University
- Iota Beta - Rochester Institute of Technology



2000 North Regional Conclave attendees at the Mu Beta Chapter in Syracuse, NY.

CENTRAL CONCLAVE



Programming Coordinator Scott Bradley leads the Central Conclave through a risk management workshop.



2000 Central Regional Conclave attendees at the Psi Alpha Chapter in Erie, PA.

Psi Alpha - Penn State Behrend, Central Conclave Host

Zeta - Penn State University
Tau - Carnegie Mellon University
Omega - Indiana University of Pennsylvania
Eta Alpha - Robert Morris College
Theta Alpha - Slippery Rock University
Phi Alpha - Clarion University
Kappa Beta - Edinboro University



2000 East Regional Conclave attendees in a large group discussion led by Chris Miller, executive director.

Volunteers whose attendance and participation helped to make the Regional Conclaves a success:

Greg Fowler - Psi Alpha Chapter Advisor
Roger Way, Alpha Alpha '91, Alumni Corporation Treasurer / Chapter Advisor
Dr. Roy Baker - Assistant Dean of Students, Bucknell University
Stan Gajda - Assistant Director of Student Organizations, University of North Carolina/Greensboro
Lori Neff - Director of Residence Life, Franklin College, Advisor to the Epsilon Chapter
Frank Hattula, Nu '94 - Alumnus Volunteer

MIDWEST CONCLAVE



Attendees to the Midwest Conclave enjoying lunch and a little relaxation at the Eta Chapter house.

Eta - University of Illinois, Midwest Conclave Host

Epsilon - Franklin College
Theta - Purdue University
Nu - Indiana University
Pi Alpha - University of Toledo
Upsilon Alpha - St. Louis University
Zeta Beta - Tarleton State University
Alpha Gamma - University of Detroit Mercy
Loras Provisional Chapter - Loras College



2000 Midwest Regional Conclave attendees at the Eta Chapter in Champaign-Urbana, IL.

Kappa Delta Rho Foundation

How do we get from here to there! This is a comment I hear almost every day, as I meet and work with a variety of people. It is like cradle-to-grave entrepreneurialism, and the shift away from big bureaucracies. Even with this shift, I am finding, however, that most people's daily lives often prevent them from "stopping and smelling the roses." We need that special time and space for reflection and re-creation.

The next century certainly will be a dramatic time for KDR. Our undergraduates (and future alumni) will be forced to behave like entrepreneurs in managing their careers, supervising their children's education and planning for their retirement. But, where did this all begin?

Since 1991, I have had the privilege of visiting the Iota Beta Chapter at Rochester Institute of Technology many times. In those nine years, this chapter has helped me to "stop and smell the roses." In fact, they have given me a new lease on life that would have not been possible without our very close association. Their talent, dedication, energy and wit have shown me that brotherhood is not a mere word, but a living embodiment of our credo.

When I was asked to speak at the Iota Beta 10th Anniversary Red Rose Formal celebration in early May, I looked out on the gathering, and it struck me that I knew the first and last names of most of the brothers and their leaders. And, I could even remember some of the delightful experiences we had together. They were not strangers, but friends - brothers who had imparted to me some of their most private and profound thoughts over the years. And, that made me reflect on one of my hobbies - collecting Lehigh Valley Railroad memorabilia. Like that once mighty railroad, KDR is like a train in the distance, rolling down the line year after year, stopping at each chapter depot, picking up brothers and leaving them off at unforeseen destinations in their lives. The KDR train whistle has called each of us to our place in time, and I can even hear the whistle calling future undergraduates to get on board for an exciting journey that will take them to exotic places and experiences that we can only imagine. KDR is one of the deepest experiences in my life. I am glad that I boarded that train in the 1960's, for my life was switched to the

"main line" of living those KDR values and high ideals.

Yes, I have taken time to "stop and smell the roses" and the fragrance of KDR's successes. But, there will be changes in store for the KDR Foundation in the not-too-distant future. In August 2000, I will step down as president of the foundation after more than seven years. Like all good Broadway musicals and dramas, there is always that inevitable time for a final curtain call. I have enjoyed every moment, from working with our



David Hamrick, Zeta '57

national presidents and executive directors, to the annual conventions, to meeting with undergraduates and alumni of various chapters. For any president, it was, and is, an exciting time, filled with great expectations and promise.

When I became president, there were only two trustees — me and Cornelius Jones, Beta '53. Then we persuaded Bob Corrie and Ray Hunt to join our ranks. In 1995, George Peer and Andy Hibel became trustees. Then, Andy Barth, John Carl, Bob Lynd, Tom Lockwood, George King, Jim Buterbaugh and Dave Hamrick joined the board. But, a large share of the credit for the foundation's success goes to Brother Paris, who has provided a bridge between the past and the future. I truly believe the foundation has been blessed with outstanding trustees and staff who possess a broad spectrum of business and personal experience.

In 1993, we were a fledgling foundation — few assets, a small General Fund Campaign and few scholarships. But, look where we are now — assets surpassing \$1.1 million, a robust General Fund Campaign, about \$35,000 in scholarships awarded annually and now an endowment campaign. Those are solid accomplishments, and alumni have been instrumental in forging a crucial part of a new KDR that invests in the lives of its members.

To take the foundation to the next step in its evolution, the foundation trustees have

selected David Hamrick, Zeta '57, to be the president-elect, who will serve with me to provide a very smooth transition, and allow him to put into place his own program for the next few years. As you begin to know Brother Hamrick, you will find him a brother of impeccable integrity. He has immense energy, foresight and determination to carry the foundation into the twenty-first century. In the 1980's he served as a member of the national fraternity board of directors.

As for me, I will still be a foundation trustee available to help out in any way to perpetuate the ideals of KDR. A very adulterated paraphrase from an old saying sums it best — "KDR alumni never die or fade away, they just find bigger and better things to do."

*Fraternally,
Paul A. Downes, Gamma '68
President*



FOUNDATION SEARCH FOR DIRECTOR OF GIFT PLANNING AND DEVELOPMENT

The Trustees of the KDR Foundation are searching for a new Director of Gift Planning and Development. This position reports to the KDR Foundation Board of Trustees.

Summary: This individual will be responsible for the planned and orderly conduct and administration of the National Fraternity's fund raising activities.

The Director's duties include:

- Visiting with alumni to discuss the programs of the foundation and fraternity and to garner their financial support of the organization. The Director maintains personal contact with large donors and develops relationships with capital giving prospects.
- Coordinating all aspects of planning and implementation for annual and special campaigns, which includes writing and producing marketing materials and following up with prospective donors.
- Developing and implementing all facets of the comprehensive planned giving program, including brochures, visiting with alumni to discuss options and contracting for the distribution of letters and other materials.

A Goodbye to Bill Paris

Executive Editor's note: The following letter was recently sent to brothers who are highly involved with the KDR Foundation. We could not think of a better way to phrase our appreciation to Bill for his years of service. With Brother Downes' permission, his letter has been reproduced here.

May 12, 2000

Dear Brother,

In 1993, Bill Paris and I became executive director and president respectively of the Kappa Delta Rho Foundation. In just seven short years, the foundation has grown from less than \$200,000 in assets to more than \$1.1 million. Contributions to the General Fund have increased from less than \$50,000 to more than \$150,000 this year. In addition, we launched our boldest initiative ever, *Vision 2000*, a five-year, five-million-dollar endowment campaign. None of this happened just by accident. It happened because of a few dedicated volunteer trustees, and above all because of one individual — Bill Paris.

Bill has served our fraternity and foundation with great distinction. His

hard work has contributed to a much more stable organization. And, he is the embodiment of honesty and integrity in the relationships he has cultivated over the past seven years.

But, like all things in life, Bill has decided to make a career change. On May 15, he will begin a new full-time job with Stewart Howe Alumni Services, headquartered in State College, PA. There, he will be involved in fundraising for fraternity and sorority alumni groups, similar to the work he has done for the foundation.

Leaving the foundation to pursue a new career interest has been a very difficult choice for Bill, since he has come to know you and other alumni on a very personal level. And, he has gained tremendous strength of purpose from the fellowship and guidance you have given him over the last few years.

Personally, I will miss Bill's leadership style and friendship that I have come to trust implicitly. And, I am sure you share those same sentiments with me. Until we hire a new director of gift planning and development, Patrick Uram, our assistant director, will carry on the day-to-day duties of coordinating the General Fund and *Vision 2000* Campaigns along with me and our president-elect Dave Hamrick, Zeta '57. We have great confidence in Patrick's ability to carry on with many of Bill's duties. I know Patrick is eager to serve you with the same kind

1986-1990 Director on the National Fraternity Board

1989-1991 Trustee of the Kappa Delta Rho Foundation

Served as Secretary and Chair of Fundraising Committee

1990-1993 Chapter Advisor Rho Beta Chapter, Eastern Illinois University

1993-1997 Executive Director of National Fraternity and Foundation

1997-2000 Director of Gift Planning and Development of KDR Foundation

2000- Volunteering as a Campaign Coordinator for *Vision 2000*

of respect and consideration that Bill has nurtured over the years.

Please feel free to write or call Dave Hamrick or me if you have any questions. Again, we will be available to assist you in any way, and to provide the continuity you expect of the foundation as we make this important transition.

Fraternally,
Paul A. Downes, Gamma '68
President

P.S. If you wish to send Bill a personal note or letter of appreciation, you may send it to him at 100 Hawthorne Road, Pittsburgh, PA 15221.

- Administrative management of the Foundation's business processes, which includes ensuring timely acknowledgments of gifts and coordinating the activities of the investment, scholarship and other committees and implementing their decisions. This may also include executing financial transactions on behalf of the Foundation.
- Facilitates the meetings of the Foundation Trustees by assisting with the selection of meeting sites, setting deadlines for reports and helping the trustees to complete those reports.
- Participates in the preparation of budget projections, obtains cost projections and reviews the grant request received from the fraternity with the Treasurer.
- Researches and recommends appropriate action to the Board concerning proffered gifts that come in a form other than cash or publicly traded securities.

Qualifications:

- Bachelor's Degree in Business or Liberal Arts or Equivalency.
- Familiarity with computers and business applications software.
- Ability to analyze, compare and interpret facts and figures quickly and to make sound judgments based on this knowledge.
- Ability to exhibit patience and tact.
- High standards of integrity.
- Knowledge in not-for-profit organizations concerning legal, tax and accounting.
- Ability to travel overnight on business on occasion.

Interested individuals can respond to:
David R. Hamrick, Foundation President-Elect
c/o Kappa Delta Rho
331 South Main Street
Greensburg, PA 15601

EMPLOYER MATCHING — DOUBLE YOUR GIFT!

Many companies offer matching programs to double the charitable contributions of their employees. Not all programs will match to fraternity foundations. However, it doesn't hurt to ask and, this is a painless way to double the impact of your giving!

In most cases, all you need to do is talk to your Human Resources Department and request a matching gift form. Complete the form and send it along with your contribution to the Foundation. We do the rest!

Here's a possible surprise! Perhaps your company doesn't have a matching gift program, but, your spouse's might! Again, it doesn't hurt to ask and think of the benefit!

If you are uncertain that your company has a matching gifts program, a quick call to your Human Resources Department will provide you with the answer.

ORDER OF THE PEREGRINE FALCON

The Order of the Peregrine Falcon is a public and visible means by which the Foundation can acknowledge and thank dedicated undergraduate members of the Fraternity for contributing their personal resources to support the programs of the Foundation. Any undergraduate member of the Fraternity may become a member by making an unrestricted contribution of at least \$35 to the Kappa Delta Rho Foundation. Each member receives a special recognition pin and a numbered certificate.

NEW PEREGRINE FALCON MEMBERS

(Between May 29, 1999 and May 24, 2000)

Paul S. Dome '00,
KDR Society - Alpha Chapter
Brian C. Quiros '00,
KDR Society - Alpha Chapter
Melissa V. Mahoney '01,
KDR Society - Alpha Chapter
David S. Craine '01, Beta
Jeffrey P. Tyhach '01, Beta
Joshua D. Goldman '02, Beta
Laurence P. Chirch '01, Beta
Gregory H. Rutter II '02, Beta
Steven N. Violin '00, Delta
Read T. Price '01, Delta
Paul D. Whitbeck '00, Epsilon
Gabriel A. Morris '01, Epsilon
Michael J. Ferraro '00, Zeta
Michael A. Orehowsky '00, Zeta
Peter Lucchese '01, Eta
Eric S. Weir '02, Eta
Brian A. Sievertsen '02, Theta
Richard H. Albright III '01, Iota
Peter A. Kadens '00, Iota

Geoffrey B. Sargeant '00, Iota
Marcus J. Hernandez '00, Iota
M. Andrew McLain, Jr. '01, Iota
Francesco DiMartino '01, Iota
Michael L. Doherty '00, Tau
Timothy N. Denlinger '03, Tau
Craig A. DiCarlo '01, Tau
Benjamin R. Miller '01,
Alpha Alpha
Gregory D. Fornalczyk '01,
Theta Alpha
Matthew E. Lown '02,
Theta Alpha
Marc I. Simon '02, Nu Alpha
Anthony M. Denier '00, Nu Alpha
Derrick A. Mayo '02, Nu Alpha
Timothy M. Watkins '00,
Upsilon Alpha
Paul T. Knize '00, Upsilon Alpha
Matthew Agnoli '00, Psi Alpha
Barclay D. Jenkins '01, Zeta Beta
Kyle W. Jordan '03, Zeta Beta
Justin D. Roberts '03, Zeta Beta
Justin D. Gassett '00, Zeta Beta
Patrick E. Dickinson '03,
Zeta Beta

Joshua T. Aaron '02, Iota Beta
Jay R. Baker '00, Iota Beta
Craig M. Jeffers '00,
Kappa Beta
Shawn M. Payne '00,
Sigma Beta
Sam A. Coleman '01,
Sigma Beta
Derek N. Hudson '01,
Chi Beta
Jay Johnson '00, Omega Beta
Samuel B. Powell '00,
Omega Beta
Eric J. McGrath '00,
Alpha Gamma

PEREGRINE FALCON RENEWALS

(Fiscal Year to date
July 1, 1999 - May 24, 2000)

Patrick M. Carr '96, Beta
Michael J. Higley '98, Beta
Daniel LaPlaca '96, Beta
Dominick L. Schirripa '99, Beta
Michael E. Van Brunt '97, Beta
Walter Scott Burns '98, Eta



Bimal N. Saraiya '00, Theta
Joseph I. Marchese '98, Iota
Brian M. Lewis '99, Lambda
Ronald G. Clark, Jr. '97, Rho
Seth M. Marlatt '98, Rho
Lachlan W. McLean '98, Rho
K. Philip M. Lychak '98, Tau
Jason S. Salegna '97,
Lambda Alpha
Craig A. Frederick '98,
Alpha Beta
Christopher K. Gordon '95,
Zeta Beta
John D. Lee '00, Zeta Beta
Donnie W. Plyler, Jr. '99,
Upsilon Beta

RHO (LAFAYETTE COLLEGE) CHAPTER ADVISOR-IN-RESIDENCE POSITION

The Rho Chapter of Kappa Delta Rho is seeking a Brother of KDR to fill the position of Advisor-in-Residence for the 2000-2001 academic year.

The Advisor-in-Residence lives in the chapter house while maintaining their full-time career or pursuing a graduate degree at one of the schools in the Lehigh Valley. The Advisor-in-Residence will receive free room and board as compensation.

This position is ideal for a brother who has graduated during the past 5 years. Generally, this individual will act as a liaison between the chapter and the college community, assist the chapter with house management issues, involve himself in helping to resolve behavior issues, planning retreats and participating in college training sessions.

For a detailed description and further inquiries, contact Ed Curtis, President of the Board of Governors, Rho Chapter.

Edward B. Curtis '62
P.O. Box 26470
Collegeville, PA 19426
610-948-0719

Heritage Society

The Heritage Society is the planned giving recognition society of the Kappa Delta Rho Foundation. Those members who have notified the Foundation (and not requested to remain anonymous) are on the roster of members.

Ferd B. Ensinger, Alpha '44
Gordon E. Hoyt, Alpha '36*
Robert A. Jones, Alpha '59
James W. Kitchell, Alpha '51
Ronald C. Dunbar, Beta '57*
Paul A. Downes, Gamma '68
Thomas R. Jensen, Zeta '50
Mrs. Alvah Borah, Eta '32
Timothy F. Moore, Eta '68
Arthur S. Nelson, Eta '32
William J. Paris, Eta '87
John C. Carl, Theta '51
J. Gregory Carl, Theta '80
Daniel R. Johnsen, Theta '62
George J. Peer, Theta '45
Michael P. Pumilia, Theta '71
John D. Winters, Jr., Theta '55
Lee H. Idleman, Iota '54
Allen L. Shumard, Kappa '30

Christopher Harley, Lambda '74
Thomas J. Linnemeier, Nu '58
Thomas C. Lockwood, Nu '56*
Thomas V. McComb, Nu '59
Max H. Schulze, Nu '61
Harold F. Lemoine, Xi '32
Maurice F. Ronayne, Xi '51
Loran L. Stewart, Sigma '32
James F. Edgeworth, Sr., Psi, '56
Nine-Tzu Chen, Alpha Alpha '94
Thomas B. Delac, Jr., Pi Alpha '94
Dean B. Rissolo, Rho Alpha '89
James D. Carroll, Alpha Beta '93
Joseph W. Rejuney, II, Epsilon Beta '90
Bradley S. Witzel, Lambda Beta '94

*New since the last edition of the
Quill and Scroll

Founder's Society

THE FOUNDER'S SOCIETY is the top donor recognition category of the Kappa Delta Rho Foundation. The Society has four levels within which it recognizes the unrestricted gifts of donors each year. We are very proud to recognize the many alumni each year who make very generous contributions to support the programs funded by the Foundation.

There are several levels of giving recognition with the Founder's Society: Benefactor, \$1,000-\$2,499; Philanthropist, \$2,500-\$4,999; Patron, \$5,000-\$9,999; and Grand Patron, \$10,000 or more.

The Foundation is pleased to recognize the following NEW members since the last publication of the Quill and Scroll.

John H. Sachleben, Beta '56 (Benefactor)

John is a 1956 graduate of the Beta Chapter at Cornell University. He is a Marketing Manager at Grumman Data Systems in North Charleston, SC.

Dr. Jay D. Luft, Beta '79 (Benefactor)

Jay is a 1979 graduate of the Beta Chapter at Cornell University. He is a doctor and resides in Kennett Square, PA.

Timothy F. Moore, Eta '68 (Benefactor)

Tim is a 1968 graduate of the Eta Chapter at the University of Illinois. He is a chartered life underwriter and specializes in charitable gift planning with the New York Life Insurance Company. He resides in Diamond Bar, CA.

William C. Benton, Theta '59 (Benefactor)

Bill is a 1959 graduate of the Theta Chapter at Purdue University. He is the founder and chairman of Benton, Schneider and Associates in Lisle, Illinois. He and his wife Joyce live in Naperville, IL.

Fred O. Cook, Theta '66 (Benefactor)

Fred is a 1966 graduate of Theta Chapter at Purdue University. He is a retired pharmacist and lives with his wife Bonnie in Richmond, IN.

Steven Schilson, Gamma Alpha '67 (Benefactor)

Steve is a 1967 graduate of the Gamma Alpha Chapter at Bradley University. He was initiated as a member of the Eta Chapter at the University of Illinois and transferred to Bradley where he helped found the Gamma Alpha Chapter. He is a stockbroker and lives in Chesterfield, MO.

Chuck Berger, Iota '75 (Benefactor)

Chuck is a 1975 graduate of the Iota Chapter at Bucknell University. He has spent his career in the technology industry and is currently CEO of Adforce, Inc., an internet advertising company owned by CMGI, Inc. He lives in Los Gatos, CA, with his wife and kids.

Editor's note: Foundation gift recognition societies recognize a donor's unrestricted gifts to the General Fund each year. They do not include other gifts a donor may have made to the endowment.

RENEWALS THIS YEAR TO DATE

(July 1, 1999 - May 24, 2000)

The Foundation is pleased to recognize the following alumni who renewed their membership in the Founder's Society as of May 24 this fiscal year.

BENEFACTOR (\$1,000 - \$2,499)

Robert P. Youngman, Alpha '64
Jay D. Luft, Beta '79
Thomas S. Loane, Beta '67
Paul A. Downes, Gamma '68
Edward H. Dickson, Delta '40
George A. King, Delta '81
S. Carlisle Botts, Epsilon '30
James D. Kowalski, Epsilon '57
David R. Hamrick, Zeta '57
Timothy F. Moore, Eta '67
William J. Paris, Eta '87
Fred O. Cook, Theta '67
V. Richard Miller, Theta '63
Chuck Berger, Iota '75
Gary J. Buchmann, Iota '79
Robert D. Lynd, Iota '67
Jon Pensyl, Pi '66
Ray C. Hunt, Rho '53
Murray Clay, Rho '30
Richard D. Kline, Rho '61
Loran L. Stewart, Sigma '32
Robert L. Gett, Omega '72
Steven V. Schilson, Gamma Alpha '66

PHILANTHROPIST (\$2,500 - \$4,999)

George J. Peer, Theta '45
Thomas C. Lockwood, Nu '56

PATRON (\$5,000 - \$9,999)

James H. Buterbaugh, Zeta '55
Lee H. Idleman, Iota '54
Andrew F. Barth, Nu Alpha '54

A PERSONAL PERSPECTIVE: TOM LOCKWOOD, NU '56

My wife Charlotte and I are nearing retirement and, like most people, are trying to figure out exactly what that means from a personal and financial perspective. Part of that process included revising our estate plan.

Like most people, our first priority was our family. Then, we began to examine what, if any, charitable gifts we might wish to make. I had a terrific experience with KDR while I was in school at Indiana University. The Fraternity provides a learning experience for young people, an experience that isn't available in the classroom. When Charlotte and I learned about the Vision 2000 Campaign, we talked about how we might help the campaign succeed and help the Fraternity provide the same valuable experience I had to thousands of young people in the years to come.

We're very pleased to join the Heritage Society by including the KDR Foundation in our estate plans. It is a small way that we can make a difference to the future of young people.

If you are like most people, planning your estate is not something you think about every day. In fact, many of us don't like to think about our own mortality at all. However, it is very important to make sure your plans are in place in case something happens to you. By doing so, you can be sure that your estate benefits those most important to you, in the most cost-efficient way, and as simply as possible to spare your loved ones unnecessary stress.

An estate gift to the KDR Foundation creates a charitable estate

tax deduction. It also allows you to provide for future generations of KDRs. For the Foundation, planned gifts allow for growth in the endowment. These endowed funds generate income, in perpetuity, for scholarships and educational programs, which will affect the lives of generations of future KDRs.

What is an Estate Gift? An estate gift can be a bequest in your will. You might name the Foundation as a beneficiary of a life insurance policy, trust or a retirement account such as a 401(k). You might also consider a "life-income" kind of gift such as a charitable remainder trust or gift annuity (where available).

If you are considering a gift, consult your attorney or financial advisor. We suggest the following wording as a common form of bequest. "I hereby give to the Kappa Delta Rho Foundation, a Pennsylvania Corporation, the sum of \$_____ to be used for the general educational purposes of the Foundation as the trustees may direct."

If you have remembered the KDR Foundation in your will or through another kind of planned gift, please let us know. You may write, call, or e-mail the planned giving staff at 331 South Main Street, Greensburg, PA 15601; (800) 536-5371 ext. 15; Foundation@KDR.com. We would be happy to acknowledge your thoughtful generosity and welcome you as a member of the Heritage Society.



Tom Lockwood, Nu '56

Eminent Architect Ernest Kump,



Executive Editor's Note: Hiko Takeda, business partner and friend of Brother Kump, submitted most of this article.

In the February 1980 edition of the *Quill and Scroll*, Brother Kump wrote, "1977 found me leaving 45 years of traditional architectural practice to my partners in California, and pursuing my special interest in total systems architectural research in England, where I am now engaged in the development of an approach to architecture as a living environmental system. I highly recommend to the brothers a change of pace and goal to enhance one's zest in living, and permit full scope to creative energies." According to his long-time friend and business partner, Hiko Takeda, Kump's 1980 submission is, "a poignant reminder of the time we left Palo Alto/San Francisco for London with all our possessions. As Ernie used to say we "burned the bridge" behind us and left for Europe to explore "Enviroecture (coined by Kump)." It was

an extraordinarily exciting and testing time for all of us. At 65 then, he had the outlook and energies of a 17-year-old."

Ernest Joseph Kump was one of the most extraordinary, innovative and provocative architects to come out of California. He died November 4, 1999, in Zurich, Switzerland at age 87 of Alzheimer's disease. He leaves a legacy of distinctive architecture of enduring dignity and informality with some of the best examples of built-environment that is in harmony with the aspirations of people and its natural setting.

The American Institute of Architects conferred Ernest J. Kump Associates in Palo Alto, CA the prestigious Firm of the Year Award in 1970, and said "The hallmark of this firm is an architecture without ostentation, but an architecture of excitement that recognizes human values," and noted Kump as a "pioneer of modular practices and systems concepts in Architecture."

He became an international expert in school planning as his pioneering work on educational programming and his integrated-space-module concept achieved great success. Among the best known is the creation in association with architects Masten & Hurd and landscape architects Sasaki & Walker of the Foothill-De Anza Community College District in California which opened in 1957 and is now one of the largest community college districts in the United States.

He served as a consulting architect to the development of the University of California at Santa Cruz from its inception. His firm's designs for the major universities included the Herbert Hoover Federal

Memorial Building at Stanford University in California, Crown College at UC Santa Cruz, a dormitory complex for the University of New Mexico at Albuquerque, student union buildings at Rensselaer Polytechnic Institute in New York and San Jose State University in California and college buildings at Pine Manor College in Massachusetts and Mills College in California. His firm designed over a hundred educational buildings.

His best-known urban development plan was Las Colinas, TX, a five square mile, and 3,000 acres area of undeveloped land next to Dallas-Fort Worth Airport. Las Colinas was to evolve out of a predetermined infrastructure of waterways and parklands woven in with traffic and utilities network. It is now purported to be the most successful privately financed urban development in the world.

A prolific inventor, he held 59 international and U.S.A. patents covering a diverse range, from building components and housing systems to industrial processes, including tone of the earliest inventions on laminated wood structure in 1946 to a series of "solid-state" building components in the 1970's.

His career began in Fresno, CA with Charles Franklin in 1934. Works like the Sill Building in Bakersfield, CA built in 1938 and still impressive, brought him fame. International acclaim of Fresno City Hall and Acalanes High School in Lafayette, CA followed as outstanding examples of innovative open plan modular construction.

He moved to San Francisco as the

National Fraternity Expansion



Loras College Provisional Chapter immediately after the Provisionalisation Ceremony.

LORAS COLLEGE GROUP BECOMES PROVISIONAL CHAPTER

On February 27, 2000, the National Fraternity accepted a new provisional chapter at Loras College in Dubuque, IA. Loras is a small, catholic liberal arts college with an impressive student population. Following the ceremony the group held it's first set of elections as an official part of Kappa Delta Rho. There is a lot of excitement among the members and they hope to become a chartered chapter of Kappa Delta Rho by the spring of 2001.

**Alpha
Gamma
Chapter
Chartered
at the
University
of Detroit
Mercy**

ambda '32, Passes On

Second World War broke, where work for the U.S. Department of Defense and community planning during World War II, with engineer Mark Falk, allowed him to exploit his concepts on modular and prefabricated construction. His Hunters Point Naval Ordinance Building in San Francisco was one of the world's first totally transparent multistory buildings.

After the War, Kump engaged in international work. He designed housing for the U.S. Navy and Air Force in Zaragoza and Madrid, Spain, the U.S. Embassy in Seoul, Korea, and advised the British Building Commission on England's post-war school building program. His office produced a master plan and library building for the American University in Beirut, Lebanon and engaged in campus development for Colleges of the Virgin Islands at St. Thomas and St. Croix and Bendigo College in Victoria, Australia.

He created Tekkto Systems in 1970 to explore the potential of "space-age" technology for mass production of low cost housing. As a grant came from a firm based in Europe to advance this work, his research was moved to London in 1977.

The most profound of his written works is, perhaps, "A New Architecture for Man" published in 1957 which continues to be relevant today as we approach the new millennium.

Kump served on the Ronald Reagan Presidential Task Force for Arts and Humanities; chaired and participated in committees on education and school planning at state, national and international lev-

els; taught at numerous universities including Harvard, Columbia, Stanford and Massachusetts Institute of Technology and spoke at public venues including an address in Moscow during the presidency of Nikita Khrushchev in 1958.

A free spirit and true maverick, he was born in Bakersfield, CA in 1911, received his Bachelor of arts in Architecture from University of California at Berkeley in 1932 and Masters Degree in Architecture from Harvard University in 1933.

He was a fellow of the American Institute of Architects, Royal Institute of British Architects, Royal Society of Arts (London), Akademie der Kunste (Berlin), International Union of Architects and International Arts and Letters (Switzerland). He spent his final years in London, his castle Schloss Matzen in Tyrol, Austria and Zurich, Switzerland.

His father, Ernest Joseph Kump, Sr., was a dashing "classical architect" in Bakersfield and Fresno, CA who fell out with his modernist son. The younger brother, Peter Kump was an accomplished architect on his own right and worked with the Kump firm until 1977. Ernest J. Kump married Josephine Clark Miller in 1934 and between them were born Peter Clark and Ramonda (Mondi). Grandson Christopher Kump and granddaughters Anne Bridges Gavin, Dr. Sara Bridges and Dr. Margaret Bridges survive him.

MAILBAG

Raphael Isaac, Iota Beta '91, Elected as Village Trustee

On April 12, 2000, Raphael Isaac, a chapter founder, was elected to a two-year term as Trustee of the Village of Kensington in Great Neck, New York. The Mayor has appointed him Lighting Commissioner and Code Enforcement Officer. Prior to this, he served for four years on the Architectural Review Board, which regulates all improvements and construction to real property in the village. Brother Isaac is a Licensed Real Estate Broker and a member of the Long Island Board of Realtors. Brother Isaac served the National Fraternity as a Leadership Consultant during the 1991-1992 school year.



Town Trustee Rafael Isaac, Iota Beta '91, being congratulated by Village of Kensington Mayor Bonnie Golub.

Eric Urbano, Pi Beta '95, Runs for County Clerk

Eric Urbano, a chapter founding father, is the GOP nominee for Wayne County Clerk. Eric needs the support of his brothers nationwide to make his campaign a success. Please direct all correspondence to: Friends of Eric Urbano, PO Box 276, Scotch Plains, NJ 07076

On April 15, 2000, the National Fraternity Chartered the Alpha Gamma Chapter at the University of Detroit Mercy. Not only is this the first new chapter of the millennium, but it is also the first chapter in the "Gamma" series of chapters. Thirty-four brothers were initiated in a celebration of their hard work to create the new chapter.

Since the group was made a provisional chapter in the fall of 1998 they have put together an impressive list of accomplishments.

- Chapter GPA of 3.42 in the fall of 1999.
- No member GPAs below 2.7.
- Largest fraternity on the UDM campus.
- Chapter involvement in campus Earth Day planning and activities.
- Chapter involvement in the campus admission department, with leaders in the Prospective Student Tour Department, Caller Department and Insignis Scholarship Department.
- Members involved with the Titan Pep Band in leadership roles.
- Members involved with the Chemistry Club in leadership roles.

- At the 1999 National Convention the Provisional Chapter took home 3rd place in the George E. Kimball outstanding social service award and 1st place in the Leo T. Wolford award for outstanding campus involvement.

The initiation ceremony took place on a Saturday afternoon in Detroit, immediately following the Detroit Area Alumni Luncheon. In addition to the National Fraternity representatives present, Frank Hattula, Nu '94 and Gary Powell, Pi Alpha '92 assisted with the ceremony.

Congratulations to the fine brothers of Alpha Gamma Chapter!



KDR Society - Alpha Chapter - Middlebury

The Alpha Chapter had a great fall at Middlebury College. We pledged and initiated a diverse and enthusiastic group of 18 new brothers. We were also excited to host many National leaders. In early November, we hosted our annual charity run in memory of our brother, T. Ragan Ryan. We also participated in the Angel program in December, purchasing gifts for the needy in Vermont's Addison County. Many Alpha brothers are active in Middlebury's Community Friends and Page One Literacy programs. In January, we elected new officers, who have quickly adjusted to their leadership positions. We currently have 13 new pledges, and are in the process of familiarizing them with the traditions of KDR.

Beta - Cornell University

The renovations to the Beta house we planned several years ago have now come to fruition. Among the renovations include all new windows and a remodeled bathroom, with a new heating system to follow this coming summer. Our formal rush was the most memorable in recent years. We went to a taping of The Late Show with David Letterman and many other unique events motivated the brotherhood and we wound up with an especially strong pledge class by the end of the week. We recently hosted our annual pledge-alum weekend and enjoyed seeing so many alumni and hearing about their latest pursuits. In keeping with tradition, the game ended without any permanent injuries, and the actives lost once again. The semester is heating up, but for our seniors their Cornell careers are coming to an end. Several soon-

to-be graduates are looking forward to entering graduate programs across the nation. Each of us has learned much from them and hope to emulate the way in which they have led our chapter. We wish them continued success in their future endeavors.

Delta - Colgate University

This is an exciting year for the Delta chapter. Once again we are proud to announce a strong class of new brothers. Our eighteen new members will continue KDR's reputation of involvement at Colgate. These new brothers hold leadership positions in student government, SOMAC, the student newspaper, athletics and various volunteer organizations on campus. Delta is also proud to announce that the chapter's new executive board has been successful at greatly improving chapter relations with the National Office, and look forward to sending our delegates to the Philadelphia convention to meet and work with our brothers from across the country this summer. Thanks to the efforts of our chapter advisor, Rob Gustafson, our chapter house sports a beautiful new hardwood floor and Delta hopes to continue the improvements with the help of Rob and our alumni in the coming year. To close, Delta would like to congratulate our graduating seniors as they prepare to depart to pursue legal, medical and graduate degrees; as well as those jumping into the "real world" of employment. They will be missed, but like all of our brothers, will always be welcome in our home.

Epsilon - Franklin College

The Epsilon Chapter

C

CHAPTER NEWS

achieved the highest GPA on campus in the fall 1999 semester. This is the fourth semester out of the past five that we have accomplished this feat. We also have four brothers that are going to continue their education in graduate school after graduation this semester.

The brothers of Epsilon chapter are also excited about the contribution to KDR that our seven new members have already given and will continue to give in the future. They are a diverse group of men; much like KDR is around the country.

Zeta - Pennsylvania State University

Zeta Chapter has taken place in a multitude of events this past year including Penn State Dance Marathon. This annual event, founded in 1972 by KDR and Delta Delta Delta Sorority, has grown each year and reached its culmination this year as KDR and Delta Delta Delta raised over \$173,000.00 for children with cancer. With this total we finished in third place as the top money raisers in Greek organizations. This total was our best ever in the 28-year history that we have participated in this Philanthropy.

In addition to Dance Marathon Zeta Chapter, for the second year in a row, finished in second place in the annual Holiday Lighting Contest among Fraternities at Penn State. All of these accomplishments took place while our house maintained the tenth highest GPA out of 54 other Fraternities on campus. Our 2.98 GPA beat out the All-Mens Average and the All Fraternity Average while tying the All University Average.

The future is bright, Zeta maintains its position at the top each year at Penn State and the only time we look back is for the great memories we made among our brotherhood.

Eta - University of Illinois

On February 26th the Eta chapter welcomed eight other KDR chapters into their chapter house for a weekend of furthering Kappa Delta Rho brotherhood. The Midwest Conclave was a tremendous learning experience and a great way to begin a busy spring semester. This semester Kappa Delta Rho is hosting an Ultimate Frisbee Competition for University of Illinois Greek chapters. This project is being held in conjunction with a local environmental organization-Students for Environmental Concerns. The Eta Chapter is also continuing to work with the Community Blood Services of Illinois for our spring blood drive. The Alpha Phi

Sorority sponsored their annual talent show event, this year KDR reclaimed the crown and were named King of Hearts once more. We have also finalized plans for our spring walkout to the Zeta Beta Chapter at Tarleton State University, Texas.

Theta - Purdue University

The past semester the Theta chapter has seen many repairs and renovations done to the house. The two large projects have been the renovation of the dining room and the construction of a computer lab. The kitchen has been repainted and several damaged areas of the walls repaired. The old linoleum has been replaced with new ceramic tile being installed by the House Manager. Also, the Theta Alumni Corporation donated a complete new set of kitchen furniture. The computer lab, constructed in the cold air dorm, now has a capacity for three computer stations, the house network server, and a communal printer for the brothers. We all hope these renovations not only

make the Chapter house a better place for us and future brothers, but also act as added incentive for initiated brothers to continually improve the house.

Iota - Bucknell University

The 99-00 academic year has proved to be quite a success for our chapter. The year started with the recruitment of 26 outstanding pledges, two of which now serve as our Praetor and Quaestor. In addition, we have worked diligently to revamp our philanthropic effort and succeeded through the first annual KDR Chili Cook-Off. This event should prove to be successful in years to come. Reinstallation of appreciation weekends such as Parent's Weekend, held in the fall, and Dad's Weekend, held in the spring, has helped us to show appreciation to the people that have given us so much.

Lambda - Cal Berkeley

After a solid pledge class of 5 for the Spring 2000, the Lambda Chapter of KDR has boosted its

Lambda Chapter Celebrates 75 Years

By Scott Johnson, Director of Programming and Member Services

On October 29, 1999, I had an opportunity to join the Lambda Chapter for the celebration of its 75th anniversary at the University Club - San Francisco. National President Bob Swinney also traveled to Berkeley, CA to join in the celebration, which included 90 brothers. The attendees spanned 8 different decades - 30's, 40's, 50's, 60's, 70's, 80's, 90's and 00' - 2 centuries of KDRs.

I rekindled some acquaintances from a previous visit, met the new faces that I did not recognize and was highly impressed with such a collegial sense of friendship. However, mostly I just stood back and absorbed the many stories of days gone-by. The strength of KDR brotherhood among the Lambda Chapter brothers was incredible - sometimes especially among those that hadn't seen each other since graduating from Cal.

The dinner was followed by a few words from the president of the Lambda Alumni Corporation, Ed Leahy '74 and the treasurer



Presentation of a 75th Anniversary Plaque by Scott Johnson, director of programming and member services, to Aaron Burke, consul and Ed Leahy, president of the Lambda Alumni Corporation.

membership to 26 as we now have a full house. With a majority of the Brotherhood being freshman and sophomores, there is much excitement about the future of KDR on the Berkeley campus. The chapter has become increasingly active, and is now looking to help contribute to the Cal Greek Pediatric AIDS concert next fall, which will raise an expected \$200,000. Due to the increase in

other. On a final note the house is looking great, as the Alumni are now working on rewiring portions of the house and installing an Ethernet system. KDR pride is high!

Nu - Indiana University

The Nu Chapter has had a great year thus far. In the fall we accomplished many things, the most important being excellent recruitment. In October we held a



Nu Chapter members at their formal.

membership, our social calendar is quite busy in comparison to previous years and for the first time a Spring Red Rose Formal will be held. Our last Alumni Banquet hosted by Chris Harley at the end of Fall, was a huge success consisting of over 70 brothers who were able to share their memories and stories about Lambda with each

homecoming party for our alumni. While in December we raised \$1500 in new toys for Toys for Tots.

Thus far in the spring, we have continued our effort in recruitment. We have also started meeting with the new Nu Advisory - which consists of Brothers Tom McComb, Ken Beckley, Mel Ermon, Keith Toombs and

CHAPTER NEWS

Dick Jones. As the spring continues we are planning our Red Rose Formal, and are preparing for the Mini 500 Trike race.

Rho - Lafayette College

The Rho chapter of Kappa Delta Rho, at Lafayette College, is continuing to maintain a strong campus presence in addition to hosting extremely beneficial philanthropy events. Rho chapter currently has an impressive five seats in Lafayette College's fifteen member Student Government. In addition, the Rho Chapter continues its tradition of supporting and hosting annual philanthropy events. The Dance Marathon charity event, which is co-hosted with the Pi Beta Phi sorority, will take place on April 12th & 13th. This event will raise money for the Spring Garden Children's Home. Various donations such as cash, refreshments and prizes are donated throughout Lafayette and the city of Easton, PA. During a skit contest incorporating numerous organizations, both Greek and non-Greek, along with a twenty-four hour dance marathon, Rho Chapter raises thousands of dollars for the nearby children's home.

Tau - Carnegie Mellon

The Tau Chapter has refocused on Greek Sing following our strong spring rush, which resulted in 6 new members (17 for the year). We've raised money for this annual Greek philanthropy and have been working on our rendition of "A Funny Thing Happened on the Way to the Forum" which we'll perform on March 18th. For this year's

Spring Carnival we have designed and built two new buggies, for the race, and the designs have also been finalized for the booth competition. Spring always turns out to be a busy semester, but we predict another semester in which we'll have the highest grades on campus (that will be 5 out of the last 6 semesters).

Psi - Lycoming College

The chapter has had a great deal of success this year recruiting new members. The Gamma Phi pledge class includes 12 pledges, largest class in over 7 years. This helps us in our quest to regain a floor in East Hall.

Graduation is scheduled for Sunday, May 7, 2000. The chapter plans to have its first Advisory Board meeting on Friday, May 5, 2000. This way everyone can support the new graduates. The next meeting is being planned for Homecoming Weekend (Oct. 20-22, 2000).

The chapter has also been very involved with community service this year. Participating in such events as, Coach-A-Thon, Adopt-A-Grandparent, and the 2nd Annual Teddy Bear Drive.

If you have any questions please contact Scott Condello, at Phone: (570) 321-4756, or email: conscot@lycoming.edu.

Omega - Indiana University of Pennsylvania

The brothers of the Omega Chapter have been focusing on two major concepts throughout the 1999-2000 academic year. The first concept is improvement. We had one of our most productive rushes in recent memory pledg-

ing seven new brothers. The house received some repairs with the addition of new windows and doors as well as a satellite TV system. Relationships with the campus have improved as two brothers served on the IFC and regular meetings are held with the Office of Student Activities and Organizations. Finally, the 38th annual Walk to Pittsburgh was held which raised \$11,400 this year after overcoming many adversities. The Omega Chapter is also focusing on change as the Indiana University of Pennsylvania has announced plans to eliminate alcohol from chapter houses starting July 1, 2000. As steps are being made to comply with this new policy, the announcement comes at a bad time as campus enrollment is down as well as rushes and pledges. Also, a large percentage of our brothers are graduating within the next year, which will leave a smaller KDR behind. The Omega Chapter looks toward the future with high hopes as a younger but stronger fraternity emerges.

Alpha Alpha - Lock Haven University

The Alpha Alpha Chapter of Kappa Delta Rho has been extremely busy this past school year. We've instituted many new programs that we feel will help our chapter grow to be even bigger and better in the new millennium. One of these programs, which we named KDR Cares, deals with community service projects such as hosting speakers on the campus and adopting a Colombian boy through the Christian Children's Fund. We've also been actively working with the University to help organize and run programs like a Thanksgiving dinner for the

residence hall students and a professional wrestling show which was held on campus to benefit the Make A Wish Foundation. Through projects like these, our many fundraising events and rush programs that completely shadow those of the past, our chapter continues to grow stronger and the brotherhood continues to grow closer. Our current pledge program is phenomenal, designed to not only educate new brothers, but show them exactly what it takes to keep KDR strong. We run it so that by the end of the program, any one of us would be completely confident turning over the house to any one of them. We see our future in the pledges and quite frankly, it looks to be a bright one. We also have the benefit of an alumni corporation that is actively involved in our daily functions and is always here to lend a hand whenever we need them. One of our alumni has volunteered his time and efforts to produce a web page for the chapter, which can be found at www.kdraa.com. We encourage all our alumni, friends and brothers to check it out.

Eta Alpha - Robert Morris College

During the past year the Eta Alpha Chapter has grown to be stronger than ever. We have seen much improvement with the chapter and campus as a whole. The chapter has made many contributions to campus, and is a vital part of student life. The chapter has supported the United Way through multiple fundraisers. The idea for these fundraisers came from the 2000 Regional Conclave at Penn State Behrend, where brothers from around the area gave

Christopher Harley '74. Bob Swinney and I also had an opportunity to speak and present a plaque to the chapter and the alumni corporation in honor of the anniversary.

Bob Swinney remarked that one of the main reasons that the Lambda Chapter has thrived for all these years is because a dedicated core of alumni. Without alumni, a chapter can not survive. Lambda's alumni have made a difference much greater than surviving.



Ted Tronoff, Lambda '46, and Scott Johnson, director of programming and member services, at the Lambda 75th Anniversary Banquet.

their ideas on fundraisers and general input for improvement of the chapter. Philanthropy activities have been received with a new found enthusiasm from not only brothers, but also from the surrounding community. Through these activities, the chapter has become closer and that bonding has reflected in other areas. The chapter carried on the spirit of competition by competing and winning the first handball season of the new millennium. Eta Alpha is looking forward to capturing another Greek Week title along with a ninth consecutive Chapter of the Year award. This award is given to the organization that is most involved on and off campus. We have worked very hard to excel and show that Kappa Delta Rho is the standard of what a fraternity should be. As always, the brothers are looking forward to the Red Rose Formal, which will be the appropriate celebration to an end of one of the most successful campaigns in memory.

Theta Alpha - Slippery Rock University

The Theta Alpha chapter of Kappa Delta Rho has recently been participating in many different community services in the area. The weekend of March 3rd and 4th our chapter attended a dance-a-thon in which all proceeds went to the Children's Institute and Children's Hospital of Pittsburgh. Our chapter brought forth the most participants of all fraternities as well as raised the most donations. Our efforts and donations were much appreciated in the community as we received local attention in the campus newspaper. We have also set up a new philanthropy committee that will initiate more campus and community involvement after spring break.

Iota Alpha - University of Pittsburgh at Johnstown
Did not submit chapter news.

Nu Alpha - Columbia
Did not submit chapter news.

Pi Alpha - University of Toledo
Michael Moore (Consul) was recently elected Homecoming King for the University of Toledo. Out of 22,000 students that is a great honor for the chapter.

The chapter is having its first 5K race planned with the proceeds going to a local charity. If any other chapter would like to participate they are more than welcome to attend. For more information contact Mike Moore at moore2@pop3.utole-do.edu.

Tau Alpha - Radford University

This year the Tau Alpha Chapter has been extremely busy on the campus of Radford University. We have participated in many fundraisers and helped out with other charities. We have participated in the Great American Heart Walk which went to benefit Alzheimer's patients, we have helped with the set up and administration of blood donation efforts with the American Red Cross and we also participated in the Zeta Tau Alpha line dance which benefited breast cancer research. KDR is also giving back to the local community by being active with Radford area youth, a host of brothers coached little league basketball teams, while others spend time mentoring under-privileged children from 3-5p.m. each weekday. The fraternity is also active on it's campus, we had a brother who served as the advisor to the off-campus Student

CHAPTER NEWS

Council, one who won the award for the most Outstanding Student Worker, and recently we had Brother Jason Miller elected Student Body President. We are starting a tradition of service and leadership here at RU that we hope to continue for many years to come.

Upsilon Alpha - St. Louis University

The brothers of Upsilon Alpha at St. Louis University are extremely proud of what we have accomplished here within our chapter. Since late August, we had an outstanding rush period. In the fall we initiated 6 new members. During this time the chapter was proud to announce that its overall chapter GPA increased by over 20%, and the Fall 99 pledge class received best GPA of any class on campus. Our chapter then participated in such events as Habitat for Humanity and the Adopt-A-Highway program. We currently have plans to work at Busch Stadium starting in April as a fundraiser also. In late February, we enjoyed our invitation to the Midwestern Regional Conclave at the University of Illinois. We would like to take the time to thank the Eta Chapter for their hospitality, and all the others who helped with this event. As usual, we thoroughly enjoyed our time with fellow brothers from other chapters across the country. We look forward to including them in some of our plans for later this year. Our Ski-trip switch, upcoming Sorority Softball World Series and other planned events have certainly kept us busy. Our Red Rose Formal has been

scheduled for April 15th, 2000 at the Henry XIII Hotel in Bridgeton, MO. If anyone would like to attend, please contact Tim Watkins at 314-882-5973 or myself, Seth Keggin 314-367-9655.

Phi Alpha - Clarion University

The Phi Alpha chapter of Kappa Delta Rho, has recently completed the Pennsylvania Liquor Control Board's Responsible Alcohol Management Program (RAMP). Harold R. Steighner trained 90% of our brothers on ways to identify minors and fake ID's, spot visibly intoxicated patrons and cut off service to somebody who's had too much to drink. The 2-1/2-hour program, which includes video and lecture segments, helps licensees to reduce their liability. The PLCB developed RAMP to prevent underage drinking and alcohol-impaired driving at the point of sale. The program's ultimate goal is to reduce alcohol-related crashes. Over 6,000 licensees and 30,000 beverage servers have been RAMP trained since it began in 1993. Also our chapter is anticipating upcoming Greek Week in early April looking to improve on our third place finish last year.

Psi Alpha - Pennsylvania State Behrend
Did not submit chapter news.

Alpha Beta - University of Delaware

This semester the Alpha Beta Chapter is working on strengthening itself internally and externally. Thus far we remain relatively unaffected by the downward spiral of Greek Life on our

campus, however we recognize that in the years to come only the strongest fraternities will survive. We have a very strong pledge class for spring and several Bids have already been extended for next fall as well. Our Scholarship Chairman is working very hard on restructuring our scholarship program to increase the vast number of resources already available to our brothers. While our Greek Games Committee is planning several key events for the celebration of Greek Week. One of those events, which we hope to open to the entire University, will feature Tin Pan Alley, an East Coast Band that is quite a draw wherever they play. Of course any local (or not so local) KDR Chapters are welcome to attend and can contact our Proprietor (Dan Hayward — dfh@udel.edu) for more info. That just about sums it up for the semester, we look forward to seeing everyone at the National Convention in August.

Epsilon Beta - Old Dominion University

The Epsilon Beta Chapter has a great spring pledge class of five strong members who are all freshmen. The Phi pledge class consists of Tyler Hubbard, Griff Jones, Adrian Jank, Mike Raphael and Paul Burchuk, whose uncle is Winston Cup driver Ricky Rudd. These five men are eager to rebuild the chapter. They have begun to sit in during president meetings and IFC meetings to represent the chapter. They should be initiated in about two weeks. At that time we hope to begin a second pledge class. We have discussed upcoming rush events such as Broomball, Cookouts, and attending baseball games. We have begun to solidify our-

selves financially through fundraisers like selling coupon books, a planned car wash with Alpha Phi, and helping out with bingo games one night a week. We also have had a great deal of alumni support financially and inspirationally. We are working hard and any help anyone can provide would be great.

Zeta Beta - Tarleton State University

The 1999-2000 academic year has been a successful one for Zeta Beta. We have rushed over 20 new members for this year, keeping our distinction of the largest fraternity on campus. We have been very active with philanthropy this year participating with "The Big Event," a community wide clean up, the local foster home, as well as Habitat for Humanity. On April 5, 2000, we will hold our biggest annual fundraiser, Rent-A-Gent. This year marks the eleventh year of our chapter and our 11th Annual Red Rose Formal will take place on April 15, 2000, at the Holiday Inn in Stephenville, TX.

Eta Beta - West Chester University

Last semester we marked our 10-year anniversary for our chapter's existence here at West Chester University. We have established a solid foundation for ourselves and our alumni body is continually growing stronger. On March 24th, we will have 41 brothers dancing at Dance Marathon to help raise money for children with AIDS. Also, we are currently establishing the Kappa Delta Rho Juvenile Diabetes Run. This will take place a year from now and will be our annual philanthropy. Besides community service, we have our eyes set on yet another possible Intramural Cup as a

new year of sports has begun. Best of Luck to all of the chapters and feel free to stop by if you are in the West Chester area.

Iota Beta - Rochester Institute of Technology

This past quarter, the Iota Beta Chapter adopted a young mother for Christmas. With the help of our advisor, Deacon Dave Palma, the chapter collected money from students and staff. The money was used to purchase food, clothing, and a few holiday gifts for the family. Also, with the help of the RIT Greek Council, Iota Beta donated food to help four additional families during the holiday season. This previous quarter also brought the Iota Beta chapter an excellent rush period in which KDR has made its name visible to the campus. One-time events, such as the Arctic Breakfast,

Arcade Night and Bowling as well as continuous events such as Sunday football have helped bring friends, rushees and brothers closer together. We currently look forward to an energetic and productive spring quarter.

Kappa Beta - Edinboro University

The Kappa Beta Chapter at Edinboro University has been busy so far in this spring semester. We have turned our sites towards philanthropic events to better not only the members of the chapter but also the image of the University as well among the Community. We have spent a number of hours at the Edinboro Manor Retirement Home simply playing cards and spending quality time with the residents. The reward of seeing smiles on their faces at the end

CHAPTER NEWS

of the day is immeasurable. We wish everyone a safe semester, what's left of it, and hope that everyone had a great spring break.

Lambda Beta - James Madison University

The brothers of the Lambda Beta Chapter have been hard at work this semester trying to outdo their successes of last year. The chapter participated in the Big Brothers/Big Sisters of Harrisonburg's "Bowl for Kids Sake" on Feb. 26. Last year the chapter raised \$1350 for Big Brothers, and when the final donations are counted on March 15 the chapter should have raised \$200 more than last year. Up next the chapter will try and defend last year's

first place finish in both Greek Week and Greek Sing on April 10-17.

Mu Beta - Syracuse University

The Mu Beta chapter has been busy this semester in the areas of rush and philanthropy. We have had several successful rush events so far, including a Super Bowl gathering as well as events such as bowling and laser tag. These events have helped us gain a quality pledge class. We have also participated in numerous philanthropic events. We are nearing the final planning stages for our Twister Tournament to benefit the Muscular Dystrophy Association. Brothers helped out at the university Jam Session for area kids

and will be participating in Vera House's white ribbon campaign to raise awareness about domestic violence. In addition, we will be taking part in two sorority philanthropies this semester.

Omicron Beta - William Paterson University

The Omicron Beta chapter of Kappa Delta Rho, along with several other members from various fraternities and sororities at William Paterson University, has been attending a weekly visitation program at the Preakness Nursing Home. This is a useful tool when attempting to become acquainted with members from other fraternities and sororities. This allows us to receive support on campus in order to aid us in our future endeavors.

In addition we have become active in William Paterson's annual Springfest. A one-week festival, which Omicron Beta will be featuring a carnival issue water tank manned by undergraduate Kappa Delta Rho members. It is our opinion that this idea should prove to be quite successful by offering William Paterson students a chance to have good, clean fun at the same time as improving our chapter's fund raising income and fraternity recognition. In the future, we hope to combine our traditions with our modernized ideas in order to continue with the growth of the Omicron Beta chapter as well as the National Fraternity of Kappa Delta Rho.

Sigma Beta - UNC Greensboro

The Sigma Beta chapter has enjoyed its best year ever in the area of recruitment. We initiated a class of fifteen members in the fall and our spring pledge class is made up of twelve great guys. We hosted the South Regional

Conclave this spring and it was a huge success. It was very exciting to have so many KDRs on our campus.

Upsilon Beta - Clemson University

This semester has been flowing very smoothly for the Upsilon Beta Chapter. The semester began by conducting Formal Rush. With limited success, we decided to hold a Rolling Rush a few weeks later. This turned out well. Pledge education is going strong. Recently, eight brothers attended the Regional Conclave at Sigma Beta Chapter, UNC-Greensboro. We brought back many ideas to be used in the coming semesters. Our calendar for the future is running rather full. The chapter has two teams competing in the Kappa Delta Shamrock Golf Tournament as well as a full slate of intramural events. We will be holding Red Rose Formal this year in Sky Valley, GA, over the weekend of March 31-April 2. Also, the chapter has planned a number of philanthropic and fund-raising events later in the semester.

Phi Beta - College of William and Mary

Did not submit chapter news.

Chi Beta - University of Charleston

Did not submit chapter news.

Psi Beta - East Stroudsburg University

Greetings from the Psi Beta Chapter at East Stroudsburg. We have been working very hard this past year, during time of hardship that new chapters often face. We have almost doubled our numbers in 3 semesters and our morale is up. We are continuing to serve our community in new and exciting ways by helping with a local food-drive, Special Olympics, and

Eta Beta Chapter Celebrates 10th Anniversary

As Vice President of Education I was honored to represent the National Fraternity at Eta Beta Chapter's Red Rose Formal on December 4th. It is their tradition to hold the formal in a different city each year. They journeyed from West Chester, PA to Baltimore for the special occasion, celebrating Eta Beta's 10th anniversary.

During its relatively short ten-year history, the Eta Beta Chapter quite quickly and consistently has been one of the top fraternities on the campus of West Chester University and has won numerous national KDR awards. Just some recent awards of note include the following:

1996

Greek awards for the chapter and for individual brothers.

1998

Executive Director's Award for Recruitment, 17 Pledges
National Staff Risk Management Award, 1st Place

1999

Executive Director's Award for Recruitment, 19 Pledges
Dr. Harold Osborn Award for Outstanding Intramural Sports, 1st Place
Outstanding Chapter Advisor of the Year, Dr. Robert Marbach

The formal dinner at the Tremont Plaza Hotel was followed by skits and awards ceremonies. New initiates, upper classmen and alumni all participated in the enjoyable festivi-

ties. On behalf of the National fraternity, I presented a commemorative plaque to Steve Galos, Eta Beta's Worthy Consul, who accepted the plaque for the chapter. The KDR gentlemen and their ladies then danced away the night.

My wife, Kenda, and I enjoyed being a part of Eta Beta's celebration. We are impressed by the enthusiasm all the brothers exhibited for Kappa Delta Rho and the fondness they expressed for their academic pursuits. Congratulations to the men of Eta Beta!

*Submitted by
Mark N. Lundgren, Nu '00
Vice President of Education*



National VP of Education Mark Lundgren gives the Eta Beta Chapter its 10th Anniversary commemorative plaque.

volunteering at the local historical association. We are always looking for new ways to have fun, be it paintball or hanging out. So far this school year, we've hosted an anti-hazing seminar for IFC, had one brother serving the IFC executive board as treasurer, won the Outstanding Community Service Award for ESU, and we have the biggest pledge class on campus this semester. We have a couple social events planned (paintball, roadtrips to other chapters, and camping trip), Greek Week and many fundraisers to help pay for our first Red Rose Formal next year.

Omega Beta - UNC Asheville

The Omega Beta chapter's year has been highlighted with events. Our chapter had a pledge class of 8 strong-hearted guys. We also continued to

work with our local Adopt-A-Road and Adopt-A-Stream programs in our efforts to keep the areas around the campus and in Asheville litter free. The chapter also held a clothes drive in UNCA's dorms for the Salvation Army. During the fall some guys helped at Camp Greenville in South Carolina. They spent a day of painting, clearing land and clearing trails for the campground. This spring we enjoyed participating in the Regional Conclave at UNC-G in February. It gave inspiration to the younger guys that went, and that is spreading into others of the chapter. On Feb. 19, the chapter held a very successful Parent/Alumni Luncheon. Our chapter also enjoyed the company of some guys from Radford's chapter as our teams battled each other in the Big South Conference tournament. We have

CHAPTER NEWS

also been very involved in our Big Brother/Big Sister events with the AZD sorority. Our major upcoming events are the Red Rose Formal in Savannah, GA, and we are sponsoring the AIDS Quilt to come to UNCA for public awareness of AIDS and the prevention of the spreading of HIV.

Alpha Gamma - University of Detroit Mercy

Since the last *Quill and Scroll*, a lot has happened to KDR here in Michigan. This past fall, we welcomed fifteen new brothers into KDR and six more are currently going through the pledge education process, scheduled to culminate at the pledge induction ceremony on March 25. We are still a very

strong fraternity academically, as the chapter boasted a cumulative 3.3 GPA last term and continues to excel in school. Our group has maintained its position as an organization dedicated to service as we worked concessions and ushering at UDM basketball games, began working concessions at the Palace of Auburn Hills, and adopted Selma's Home as our local philanthropy. We also continued serving the school as leaders, student hosts, student tour directors, and dedicated workers and helpers. Finally, we created the first ever KDR Chronicle newsletter and spread it around campus so everyone could know what we do. We are looking forward to the Alumni Luncheon on

April 15 and to being chartered on that same day. Best wishes to all KDR brothers and to the National Fraternity.

Loras College Provisional

The men at the Loras College Provisional Chapter of Kappa Delta Rho are excited to be a part of this fraternity. After attending the Regional Conclave at the University of Illinois we feel welcomed into a strong brotherhood of honor and we look forward to working with other KDR chap-

ters to build a stronger fraternity. We have a roster of 14 men and are excited to carry on the traditions of Kappa Delta Rho in Honor Above All Things. We want to say thank you for all the help and assistance to all the chapters that have given great ideas so far and we are always open for any new ideas that chapters may have to give. The men at Loras College are looking forward to becoming a National Chapter of Kappa Delta Rho.



Loras College Provisional Chapter during its first officer elections.

CHAPTER ETERNAL

BETA

Harry B. Weber, '27
Palm Springs, CA

GAMMA

Dr. Harry C. Baden, '48
Webster, NY

Raymond E. Carroll, '40

He is survived by his wife Marjorie who asked that her address be included:

24 Das Court
Williamsville, NY 14221

Charles F. McVoy, '42
Danville, IL

DELTA

Robert M. Metcalfe, Jr., '52

Jamestown, NC

Thomas D. Patterson, '30
Manhasset, NY

ZETA

Eugene J. Wasilewski, '48
Rohnert Park, CA

THETA

Richard D. Morgal, '45
Dix Hills, NY

George A. Sweigart, '35
New Castle, IN

William R. Stover, '65
Decatur, GA

James W. Walker, '56
Ten Mile, TN

IOTA

Francis K. Barber, '51
Harrisburg, PA

Todd K. Beaver, '55
Daytona Beach, FL

Anthony Jalovick, '50
Buffalo, NY

Robert D. Minium, '40
Lewisburg, PA

LAMBDA

Richard V. Baldry, '50
Carmichael, CA

Thomas Bolger, '56
Hayward, CA

Ray G. Farrell, '38
Shafter, CA

Ernest J. Kump, '32
Zurich, Switzerland

Glenn A. Malone, '53
Cohasset, MA

Robert E. Rolling, '53
Auburn, CA

MU

Millard H. Pryor, '25
Chapter Founder

NU

Ben W. Miller, '31
Ojai, CA

From his wife: Ben and I chaperoned some KDR celebrations in 1934-5 at Indiana U. and attended venison dinners! I graduated in June B.S. Martha Linn Miller.

He played basketball against John Wooden (Purdue) then his sons were coached by John at UCLA. Sincerely, Martha Linn Miller, Sigma Kappa.

XI

Paul G. Poulin, '51
St. Petersburg, FL

Willard E. Alexander, '31
Willston, VT

PI

Dr. John Nelson McKay, '49
Ellicott City, MD

Jack E. Shaffer, '52
Altoona, PA

RHO

Raymond C. Sowko, '50
Indiana, PA

SIGMA

Arthur E. Matthews, '53
Roseburg, OR

Jay M. Mitchell, '55
Portland, OR

Thomas J. Nock, '38
Walnut Creek, CA

UPSILON

Maynard T. Carr, '53
Lindsay, CA

PSI

Franklin W. Noll, III, '89
Wyomissing, PA

ALPHA ALPHA

Thorwald E. Lewis, Jr., '64
Hatboro, PA

Our Kappa Delta Rho

By Benjamin Miller,
Alpha Alpha 2000

By virtue of our experiences
And all that we've done,
We call ourselves brothers
And stand unified as one.

The fraternity that binds us
And keeps us together,
Holds a special place in our hearts
Where it will remain forever.

Some minor points will change
As time keeps passing by,
Brothers will come and go
Some traditions will die.

Others will continue to evolve
That's the way it has to be,
The fraternity is a part of us all
She is a living, breathing entity.

We may take comfort in knowing
That long after we're gone,
Through our precious fraternity
Each one of us will live on.

National Directory

KAPPA DELTA RHO FRATERNITY

BOARD OF DIRECTORS

President (2000)

Robert L. Swinney, Sigma '58

Executive Vice President

Christopher B. Miller,
Tau Alpha '97

Vice President/Standards and Risk Management (2002)

Joshua L. Smith,
Alpha Beta '93

Vice President/Finance and Administration (2000)

Douglas M. Rammel,
Pi Alpha '90

Vice President/Education (2000)

Mark N. Lundgren, Nu '70

Vice President/Alumni Affairs (2000)

Mark S. West,
Upsilon Alpha '88

Secretary (2000)

Gerald L. Murray, Theta '66

Treasurer (2000)

Edward B. Curtis, Rho '62

Director/Insurance Programs (2002)

J. Hall Jones, Lambda Beta '91

Directors (2002)

David Bernstein,
Omicron Alpha '88
Richard O. Jones, Nu '64
Christopher K. Gordon,
Zeta Beta '95

Directors (2000)

Shawn M. Hoke,
Phi Alpha '95
Brian Lewis, Lambda '99
Eric Duff, Zeta Beta '00
Jay Johnson,
Omega Beta '99

Directors Emeritus

Robert D. Corrie, Beta '53
Robert D. Lynd, Iota '67
James F. Edgeworth, Sr.,
Psi '56

Ordo Honoris Selection Committee

Robert D. Corrie, Beta '53
- Chairman

Loran L. Stewart, Sigma '32
Gordon R. Stanley, Delta '59

Alumni Affairs Committee

Mark S. West, Upsilon Alpha '88 - Chairman
Christopher K. Gordon,
Zeta Beta '95

Judiciary Committee

Joshua L. Smith, Alpha Beta '93 - Chairman
Shawn M. Hoke,
Phi Alpha '95
Richard O. Jones, Nu '64
Christopher B. Miller,
Tau Alpha '97

Finance Committee

Edward B. Curtis,
Rho '62 - Chairman
Suzanne M. Balash
David Bernstein,
Omicron Alpha '88
J. Hall Jones,
Lambda Beta '91
Christopher B. Miller,
Tau Alpha '97
Douglas M. Rammel,
Pi Alpha '90
Scott M. Smaniotto,
Alpha Beta '93
Robert L. Swinney, Sigma '58

Expansion Committee

Eric Duff, Zeta Beta '00
- Chairman
Shawn M. Hoke,
Phi Alpha '95
Brian Lewis, Lambda '99
Gerald L. Murray, Theta '66

Marketing and Communications Committee

David Bernstein, Omicron Alpha '88 - Chairman
Jay Johnson, Omega Beta '99

Nominating Committee

James F. Edgeworth, Sr.,
Psi '56 - Chairman
Brian Lewis, Lambda '99
Christopher B. Miller,
Tau Alpha '97
Douglas M. Rammel,
Pi Alpha '90
Mark S. West, Upsilon Alpha '88

Website Committee

Jay Johnson, Omega Beta '99
- Chairman
John Dempsey, Upsilon Alpha '90
Brian Lewis, Lambda '99
Shawn M. Hoke, Phi Alpha '95
Richard O. Jones, Nu '54
Michael Morelli, Rho '01

Convention Committee

Scott A. Johnson, Phi Alpha '95 - Chairman
John Kapell, Eta Beta '95
(Dean of the Leadership Academy)
Paul A. Downes, Gamma '68
Christopher K. Gordon,
Zeta Beta '95

Jerry Stebbins, Phi Alpha '88
Mark S. West, Upsilon Alpha '88

Chapter Awards Committee

Scott A. Johnson, Phi Alpha '95 - Coordinator
Scott Chesky, Iota '94
Frank Hattula, Nu '94
Vernon Hurd, Pi Alpha '97
Rafael Isaac, Iota Beta '91
Jon Kapell, Eta Beta '95
Brian Leckrone, Epsilon '86
Eric Mitcheltree, Alpha '90
Doug Vogel, Tau Alpha '96
Corey Waltz, Tau Alpha '96

KAPPA DELTA RHO FOUNDATION, INC.

BOARD OF TRUSTEES

President

Paul A. Downes, Gamma '68

President-Elect

David R. Hamrick, Zeta '57

Vice President/Investments Secretary

Ray C. Hunt, Rho '53

Treasurer

Robert D. Corrie, Beta '53

Trustees

Andrew F. Barth, Nu Alpha '83
James H. Butterbaugh,
Zeta '55
John C. Carl, Theta '51
George A. King, Delta '81
Thomas C. Lockwood, Nu '56
Robert D. Lynd, Iota '67

Assistant Director of Gift Planning and Development

Patrick Uram

INVESTMENT COMMITTEE

Ray C. Hunt, Rho '53 - Chairman
Andrew F. Barth, Nu Alpha '83
Robert D. Corrie, Beta '53
William J. Paris, Eta '87
Robert P. Youngman,
Alpha '64

SCHOLARSHIP COMMITTEE

John David Reed, PhD.,
Eta '64 - Chairman
Thomas L. Guthrie, Theta '62
Dr. Alan T. Lord, Kappa '72

LAW SCHOLARSHIP

Paul W. Upson, Alpha '66

ORDER OF THE PEREGRINE

FALCON COMMITTEE

Michael Higley, Beta '97

CHAPTERS

Kappa Delta Rho Society

Alpha Chapter
Middlebury College

Kappa Delta Rho Fraternity

Alpha (inactive)
Middlebury College

Beta

Cornell University

Gamma (inactive)

University at Albany
(S.U.N.Y.)

Delta

Colgate University

Epsilon

Franklin College

Zeta

Penn State University

Eta

University of Illinois

Theta

Purdue University

Iota

Bucknell University

Kappa (inactive)

Ohio State University

Lambda

University of California - Berkeley

Mu (inactive)

University of Michigan

Nu

Indiana University

Xi (inactive)

Colby College

Omicron (inactive)

Butler University

Pi (inactive)

Gettysburg College

Rho

Lafayette College

Sigma (inactive)

Oregon State University

Tau

Carnegie Mellon University

Upsilon (inactive)

Fresno State University

Phi (inactive)

University of Oklahoma

Chi Colony (inactive)

University of Florida

Psi

Lycoming College

Omega

Indiana University of Pennsylvania

Alpha Alpha

Lock Haven University

Beta Alpha (inactive)

C.W. Post College

Gamma Alpha (inactive)

Bradley University

Delta Alpha (inactive)

Rhode Island State University

Epsilon Alpha (inactive)

Lewis University

Zeta Alpha (inactive)

University of Dayton

Eta Alpha

Robert Morris College

Theta Alpha

Slippery Rock University

Iota Alpha

University of Pittsburgh/Johnstown

Kappa Alpha (inactive)

Illinois State University

Lambda Alpha (inactive)

Gannon University

Mu Alpha (inactive)

West Virginia University

Nu Alpha

Columbia University

Xi Alpha (inactive)

Temple University

Omicron Alpha (inactive)

Rutgers University

Pi Alpha

University of Toledo

Rho Alpha (inactive)

Bryant College

Sigma Alpha (inactive)

Hofstra University

Tau Alpha

Radford University

Upsilon Alpha

St. Louis University

Phi Alpha

Clarion University

Chi Alpha (inactive)

University of Pittsburgh/Greensburg

Psi Alpha

Penn State Behrend College

Omega Alpha (inactive)

Virginia Commonwealth University

Alpha Beta

University of Delaware

Beta Beta (inactive)

Ball State University

Gamma Beta (inactive)

Virginia Tech

Delta Beta (inactive)

West Liberty University

Epsilon Beta

Old Dominion University

Zeta Beta

Tarleton State University

Eta Beta

West Chester University

Theta Beta (inactive)

NY Institute of Technology

Iota Beta

Rochester Institute of Technology

Kappa Beta

Edinboro University

Lambda Beta

James Madison University

Mu Beta

Syracuse University

Nu Beta (inactive)

Fordham University

Xi Beta (inactive)

University of Pittsburgh

Omicron Beta

William Paterson University

Pi Beta (inactive)

Richard Stockton College

Rho Beta (inactive)

Eastern Illinois University

Sigma Beta

University of North Carolina/Greensboro

Tau Beta (inactive)

East Tennessee State University

Upsilon Beta

Clemson University

Phi Beta

The College of William and Mary

Chi Beta

University of Charleston

Psi Beta

East Stroudsburg University

Omega Beta

University of North Carolina/Asheville

Alpha Gamma

University of Detroit/Mercy

Provisional Chapter

Loras College

THE KAPPA DELTA RHO FOUNDATION

INVESTING IN THE LIVES OF STUDENTS

We can't succeed without YOU! With your help, we can make someone's life better. We can help them to achieve their full potential. We can make a difference! Consider recognition as a member of the Centennial Society or higher with a gift of at least \$100.

YES, I WANT TO HELP A STUDENT ACHIEVE FULL POTENTIAL! I ENCLOSE MY TAX-DEDUCTIBLE CONTRIBUTION OF:

\$ _____ \$100 - \$249 Centennial Society

\$ _____ \$250 - \$499 Gina Arturo Ratti Society

\$ _____ \$500 - \$749 Chester Monroe Walch Society

\$ _____ \$750 - \$999 Gideon Russell Norton Society

\$ _____ Other

Please make your check payable to the Kappa Delta Rho Foundation or you can charge your donation to your AmEx, Visa or MasterCard.

Card Number _____

Expiration Date _____

AmEx Visa MasterCard (circle one)

Signature _____

____ My employer (or my spouse's employer) will match my contribution. My Matching Gift Form is enclosed!

Brother _____

Chapter/Graduation Yr _____

Address _____

City/State/Zip _____

Note if New Address _____

Company _____

Position _____

____ I have included the Kappa Delta Rho Foundation in my estate plans.

____ I would like more information about gifts of property, stock or other types of planned gifts to the Kappa Delta Rho Foundation.

A Note from Mark Lundgren, Nu '70



The above photograph of me with my wife, Kenda, and my son, Kristopher, taken at the University of Chicago reminds me of my own first year at Indiana University. As a new member of IU's main campus of 32,000 students, I felt instantly more at home and secure because of my pledgeship to Nu Chapter of Kappa Delta Rho. I developed deep friendships, gained assistance at navigating the big campus, learned social and organizational skills, and enjoyed the social atmosphere fostered by fraternity life at KDR. Membership then in Kappa Delta Rho was a major motivator for me to succeed academically, and membership continues to this day as a great source of personal pride. Because I have been called upon to volunteer my personal time and resources

KDR CALENDAR

- Aug. 10-13 Williams Leadership Academy
- Aug. 11 Philadelphia Area Alumni Social
- Aug. 12 National Convention Meeting/
Career Symposium/Ordo Honoris
Banquet (Philadelphia)
- Nov. 11 Washington, DC Area Alumni Social
- Aug. 2005 KDR Centennial Celebration



Kappa Delta Rho, Inc.
National Office
331 South Main Street
Greensburg, PA 15601

Address Service Requested

VISION

A Campaign for Kappa Delta Rho

CAMPAIGN COUNTER

Pledges payable over five years

VISION 2000 Campaign pledging ends December 31, 2002

GOAL: \$5,000,000

	Goal	Committed as of May 30, 2000
Cash Commitments	\$2,500,000	\$1,003,874
Estate Gift Commitments	\$1,750,000	\$282,000
General Fund	\$750,000	\$453,395
TOTAL: \$1,739,269		

to serve the National Fraternity over the past five years, I have been fortunate to expand my friendships with alumni and undergraduate KDRs throughout the country. I continue to be amazed at the comfortable bonds that all us brothers of Kappa Delta Rho enjoy across the miles and spanning many generations. My love of our Brotherhood motivates me to participate in *Vision 2000*.

My participation in *Vision 2000* will help fulfill my personal responsibility to strive to ensure that the lifetime brotherhood of Kappa Delta Rho will persevere and enrich the lives of future generations to come. I encourage each of you to join me to the extent you are financially comfortable in participating in *Vision 2000 - A Campaign for KDR*. I hope that for you too it is not a question of whether or not you will participate, but simply to what extent.

NON PROFIT
ORGANIZATION
US POSTAGE PAID
PERMIT # 1715
PITTSBURGH, PA 15290