

Quill & Scroll

FALL 2003

THE MAGAZINE OF KAPPA DELTA RHO

Your IMPACT on KDR...



Old Painter Hall
Fall 1999

**Involvement TODAY
determines
our legacy
TOMORROW!**

INSIDE:

*Convention 2003 Wrap-Up
Foundation Annual Report
Local Chapter and Alumni News
New Amendments to the Constitution*

From the President

Brothers,

The Board of Directors and National Headquarters staff have been hard at work during the past year creating programming and services that will assist the Fraternity to achieve excellence in all its pursuits. Our focus has been on member development, alumni relations, chapter operations, and chapter expansion. I believe we have made steady improvement in each of these areas, which is demonstrated by objective criteria. Our numbers have grown, we have held successful alumni events, and our undergraduate chapters continue to excel on their university campuses. In the coming year, the National Fraternity will focus on three goals: increased communication, chapter and undergraduate member financial accountability, and growth.

On August 7-10, 2003, the National Fraternity of Kappa Delta Rho held its annual convention and Williams Leadership Academy in St. Louis, Missouri. As reported by the undergraduates and alumni that attended the convention, our staff provided participants with a number of very well-received educational programs related to all areas of chapter management. Our St. Louis Area Alumni event at

Dave & Buster's, sponsored by the Upsilon Alpha Alumni Corporation, was our most successful event in recent history.

Beginning in 2005, Kappa Delta Rho begins a celebration of its Centennial. We have already started planning this exciting anniversary. Multiple events will take place during the year culminating with a beautiful event at Baltimore's Inner Harbor in the summer of 2005. Stay tuned for additional information in the coming months.

This is a very exciting time for Kappa Delta Rho. However, we would not be where we are today without the assistance of the Kappa Delta Rho Foundation and many, many alumni volunteers. Thanks to all of you for your time, commitment, and dedication to our Fraternity.

Fraternally yours,
Joshua L. Smith, AB '93
National President
josh@kdr.com



From the Executive Director

Your Impact on KDR

Do you remember the night you were initiated? The feeling of pride and excitement in your heart that your non-greek buddies in the dorm could not understand when you tried to explain it to them in the cafeteria the next day? Do you remember the promises that you and the rest of your pledge class made to the Fraternity that night? Some of your pledge brothers were too overwhelmed with excitement to realize the obligation and responsibility that all of you had just accepted, and some could not wait to go out and get started. Overall, each of us understood that our number one goal was to leave the Fraternity better than we found it the day we joined.

Was that too broad of a statement? Did we make that promise to our individual chapter for the duration of our college experience, or did we make that promise to the National Fraternity of Kappa Delta Rho for life? As a new member, we were able to understand that the caliber of each individual pledge class would impact the chapter, as they became leaders. But how many

NATIONAL FRATERNITY STAFF CHANGES

The National Headquarters welcomes Programming Coordinator

David A. Barber, Omega 2003

David A. Barber, Omega 2003 (Indiana University of Pennsylvania), joined the National Headquarters staff in June 2003 as a Programming Coordinator. Dave graduated with a 3.67 GPA and received his BS in Physical Education and Sports Exercise Science. While active in the Omega chapter, Dave held the positions of President, Pledge Educator, and Treasurer; and was instrumental in turning his chapter around by reducing its debt and helping to win the award for Most Improved Chapter at the 2003 National Convention.

Executive Director Resignation, Interim Executive Director Appointed

Former Executive Director Benjamin K. Willis, Zeta Beta '99 (Tarleton State University) has resigned his position effective November 30, 2003 to become VP of Greek Programs and Senior Marketing Manager with Cutting Edge Resource Group. Although he is leaving the National Staff and full-time employment with the fraternity, he will continue to stay involved as a volunteer, assisting with upcoming Regional Conclaves and serving on various committees.

Director of Chapter Services, Joseph E. Rees II, Nu '01 (Indiana University) has been appointed Interim Executive Director by the Board of Directors. Brother Rees joined the national staff in 2002 as a Programming Coordinator and earned the respect and admiration of our membership. Before coming to work for the National Headquarters, brother Rees served a two-year term as an undergraduate board member on the National Fraternity's Board of Directors. Upon graduation he worked as Operations Manager for the HOPE Foundation, a nonprofit educational organization, where he assisted in conference planning, database management, marketing, shipping and receiving, and collections.

Jonathan H. Lay, Mu Beta '99, departs for his MBA

Former Chief Development Officer for the Kappa Delta Rho Foundation, Jonathan H. Lay, Mu Beta '99 (Syracuse University), started classes this fall at the Simon Business School at The University of Rochester to pursue his MBA. We wish him the very best that life has to offer, and look forward to his continued involvement as a dedicated volunteer with local chapters in the area.

of us realized that as each of us grew up, graduated, and left the comfort and security of the Fraternity, we were still bound to our promise that we made that first night? And now, as alumni, what impact can we make in the Fraternity?



Impact can be defined as "the effect or impression of one thing on another." Making an impact in KDR can be broken down to a simple four step process: 1) Ask yourself why you joined KDR, 2) remember what kept you involved until you graduated, 3) determine what impact you want to leave behind and how it will effect the Fraternity, and 4) act on it. You ask yourself why you joined, because you need to acknowledge what it is that attracted you to Kappa Delta Rho. Most of us joined because we each found an opportunity to improve ourselves in various areas, such as socially and academically, or our networking opportunities for job hunting after graduation. Next, you need to remember why you stayed involved until graduation, and not just join for a few semesters and then get out. Was it the friendships created, the opportunities to sharpen your leadership skills, or the overall sense of being a part of something that is greater then you are? Step three is to then determine what impact you want to leave behind and how will it affect the Fraternity, or take an inventory of what resources you have available to give and determine how it will best suit the Fraternity. Some of us have jobs that allow us to volunteer our time on the chapter or national level of the Fraternity. Others lack free time but are able to help by giving to the Kappa Delta Rho Foundation to fund scholarships and provide programming for leadership development of our undergraduates. And the final step is act on it, find out who you need to contact to put your idea in to action. If you want to help remodel the chapter house, call the Alumni Corporation. If you want to start a chapter scholarship contact the KDR Foundation. If you want to volunteer with a local chapter in your area or more on a national level you should contact the National Headquarters. When you follow these four simple steps, it is easy to see what kind of impact that you can make on our Fraternity.

So why do we even worry about making an impact? Well, if each of us are charged to "leave the fraternity better than when we found it," then all of us need to strive to do everything in our power to make sure that the legacy that we leave behind for future KDR's is a good one. Because when it comes down to it, one thing is always for certain: *The impact that we make on the Fraternity today, determines the legacy that we leave behind tomorrow!*

VISIT OUR WEBSITE!

www.kdr.com

Read the latest KDR news!

Locate other brothers' E-mail addresses!

Update your contact information!

Quill & Scroll

From the President.....	2
From the Executive Director.....	2
2003 Convention News.....	4
KDR Foundation News.....	8
National Fraternity News.....	13
Alumni News.....	16
Chapter News.....	18
National Directory.....	19

Quill and Scroll (USPS 605-402), an educational journal, is published two times a year by The National Fraternity of Kappa Delta Rho, Inc., 331 S. Main St., Greensburg, PA 15601. Forward all correspondence, manuscripts, and changes to the National Office.

EXECUTIVE EDITOR: Ben Willis
ASSOCIATE EXECUTIVE EDITOR: J.R. Rees

KAP

NATIONAL OFFICE
 331 SOUTH MAIN STREET
 GREENSBURG, PA 15601
 (800) 536-5371 • www.kdr.com

FRATERNITY
Joseph E. Rees II
Interim Executive Director
jr@kdr.com
 Extension 12

Suzanne M. Balash
Office Manager
sue@kdr.com
 Extension 10

Michael R. Natale
Programming Coordinator
mike@kdr.com
 Extension 14

David A. Barber
Programming Coordinator
dave@kdr.com
 Extension 17

FOUNDATION
William J. Paris
Director of Development
foundation@kdr.com
 Extension 15



Group photo of all convention attendees taken at the Ordo Banquet



THE 92ND ANNUAL KAPPA DELTA RHO NATIONAL CONVENTION has come and gone, and by all accounts it was a huge success. Nearly 150 people attended the convention, which was held in St. Louis, and everyone left with smiles on their faces.

On Thursday and Friday, delegates took part in the Williams Leadership Academy. Students and alumni attendees alike were treated to excellent presentations by speakers such as KDR Executive Director Ben Willis, Theta Chi Executive Director Dave Westol, and Ed King, and also participated in smaller breakout sessions facilitated by a talented group of volunteers.

Friday afternoon's chapter awards luncheon recognized chapters for their hard work over the past school year in areas such as recruitment, philanthropy, social service, alumni relations, campus involvement, faculty relations, and academics.

A St. Louis area alumni event took place at Dave & Buster's on Friday night – which turned out to be the largest alumni event KDR has ever had.

Saturday was a full day of excitement for everyone. The National Convention business meeting was held in the morning, where a group of students stood up and thanked the National Headquarters Staff for the best undergraduate programming that they had ever seen.

At the Ordo Honoris banquet on Saturday night, the O.D. Roberts Award for Chapter Improvement was presented to our chapters at Colgate University, University of California at Berkeley, Indiana University of Pennsylvania, Edinboro University of Pennsylvania, and Syracuse University.

Our Grand Consul's Award for Chapter of the Year was awarded to our chapter at Franklin College. The night concluded with three distinguished members of Kappa Delta Rho, Richard J. Petronis, Zeta Beta Honorary; James W. Sherby, Nu '68;

and Mark S. West, Upsilon Alpha '88, being inducted into the Ordo Honoris.

The entire event was a positive experience for all who attended. In August 2005 we will be holding our Centennial Celebration, in Baltimore, Maryland. Every year we see attendance increase at the convention and the National Board of Directors, Headquarters staff, and Kappa Delta Rho Foundation Board of Trustees envision a record breaking turnout for our 100th birthday party!

ST. LOUIS AREA ALUMNI EVENT

On August 8, 2003, 113 KDR brothers and guests met at Dave & Busters in St. Louis for an evening of fun, games, networking, and KDR. The event was held in conjunction with the 92nd Williams Leadership Academy and National Convention. Upsilon Alpha had the largest contingency of alumni present, but many other chapters were well represented (Zeta Beta, Nu, Omega, Beta, Tau, Gamma Alpha, Theta, Pi Alpha, Iota Beta, Sigma, Alpha Beta, Rho, and Psi to name a few).

Special thanks to Mark West, Joe Duggan, and other Upsilon Alpha alumni and undergraduates for making this the most successful alumni event to date. The Upsilon Alpha Alumni Corporation and Chapter raised \$1,500 to sponsor Thursday night's dinner at the convention. The money was raised by several individual contributions and three major fundraising events. These events included the alumni working at St. Louis Cardinals baseball games, alumni and undergraduates working a fundraising stand at the 2003 St. Louis Mardi Gras festival. Also, the chapter allocated part of their dues for the event. In addition to the dinner, the alumni corporation purchased the Missouri State Flag and display equipment and presented it to the National Fraternity as a gift. The National Fraternity is very excited to see such commitment and dedication from alumni groups. If you would like to have your alumni group sponsor a local event, contact Programming Coordinator Dave Barber at the National Headquarters for more information.

2003 Chapter Awards

At the 2003 National Convention Awards Luncheon, a number of chapters were recognized for their commitment to excellence. Competition was tight, as you will notice by the several tie votes listed below.

Dr. Harold Osborn Award for Intramural Sports

First Place - Tau Chapter, Carnegie Mellon
Second Place - Zeta Beta Chapter, Tarleton State
Third Place - Psi Alpha Chapter, PSU Erie

Donald C. Wolfe Award for Outstanding Chapter Newsletter

First Place - Nu Chapter, Indiana
Second Place - Alpha Alpha Chapter, Lock Haven
Third Place (tie) - Iota Beta Chapter, Rochester Institute of Technology and Alpha Gamma Chapter, Detroit Mercy

Gino A. Ratti Award for Outstanding Alumni Relations

First Place - Zeta Beta Chapter, Tarleton State
Second Place (tie) - Eta Chapter, Illinois and Iota Beta Chapter, Rochester Institute of Technology

George E. Shaw Award for Public Relations

First Place - Epsilon Chapter, Franklin
Second Place - Mu Beta Chapter, Syracuse
Third Place - Alpha Gamma Chapter, Detroit Mercy

John V. Dempsey Award for Best Chapter Website

Tau Chapter, Carnegie Mellon

John L. Blakely Award for Philanthropic Projects

SMALL CHAPTERS
First Place - Kappa Beta Chapter, Edinboro
Second Place - Epsilon Chapter, Franklin
Third Place - Epsilon Beta Chapter, Old Dominion
LARGE CHAPTERS
First Place - Zeta Beta Chapter, Tarleton State
Second Place - Tau Chapter, Carnegie Mellon
Third Place - Alpha Gamma Chapter, Detroit Mercy

George Kimball Award for Outstanding Social Service

First Place - Mu Beta Chapter, Syracuse
Second Place - Zeta Beta Chapter, Tarleton State
Third Place - Alpha Gamma Chapter, Detroit Mercy

E. Mayer Maloney Award for Outstanding Faculty Relations

First Place - Mu Beta Chapter, Syracuse
Second Place - Alpha Gamma Chapter, Detroit Mercy
Third Place - Epsilon Chapter, Franklin

Leo T. Wolford Award for Outstanding Campus Involvement

First Place - Zeta Beta Chapter, Tarleton State
Second Place (tie) - Mu Beta Chapter, Syracuse and Alpha Gamma Chapter, Detroit Mercy

Outstanding Pledge

Joe McGillian, Iota Chapter, Bucknell University

This year's outstanding pledge award went to a gentleman who pledged as a sophomore in the fall of 2002, while earning a 3.3 GPA in a challenging engineering program. During his first semester as an active brother Joe was elected Quaestor, and worked to ensure the financial good standing of the chapter. He has a professional electrician's license, and during his time off from college and fraternity commitments, he owns and manages an electrical contracting business and an apartment building in Philadelphia. He has sponsored holes for charity golf tournaments, and runs his business in a manner consistent with the highest ideals of life and character. For a strong work ethic, commitment to excellence, and dedication to school, Fraternity, and community, we were proud to present Joe McGillian the Outstanding Pledge of the Year award.

Outstanding Senior

Matthew Moore, Epsilon Chapter, Franklin College

Matt Moore spent the last four years compiling an impressive record of service to his college and chapter. He earned a 3.8 GPA majoring in political science and pre-law, and will attend Indiana University School of Law. While an active brother, he created original recruitment and social service programs for his chapter. In addition to serving as a leader in recruitment and social service, he also served as Centurion and Risk Manager.

Outstanding Chapter Advisor

Lori Neff, Epsilon Chapter, Franklin College

O.D. ROBERTS AWARDS FOR

Delta Chapter, Colgate University

This chapter made great strides in the past year. At a school with a challenging environment for fraternities, the Delta Chapter has continued to succeed. This year, Delta Chapter has distinguished itself in many areas, including chapter operations and



alumni relations. With their alumni corporation, they raised over \$35,000 for renovations and a new front porch to their beautiful chapter house.

Lambda Chapter, University of California – Berkeley

This award goes to another chapter that has made great strides in the last year, particularly in the area of university relations and risk management. The University of California – Berkeley has seen a strong KDR



chapter emerge last year, which earned the highest GPA among the 36 fraternities two semesters in a row. Lambda Chapter now serves as a role model for other fraternities. A brother of the chapter currently serves as IFC Risk Manager.

Omega Chapter, Indiana University of Pennsylvania

This year, Omega Chapter demonstrates how far you can go in a short space of time if sufficiently motivated. As recently as two years ago, the Omega Chapter was plagued with internal membership problems, poor financial management and recruitment. Omega Chapter eliminated many of its problems, and adopted a pledge education program, responsible financial planning, and created new life and energy by reviving an



inactive alumni corporation. For coming back from the brink and refusing to quit, Omega Chapter earned this award for chapter improvement.

Kappa Beta Chapter, Edinboro University

This award went to another chapter in western Pennsylvania, one that found itself in adverse circumstances this past year. After losing the lease on their long-term chapter house, many of the members of Kappa Beta Chapter lost hope. However, a core group of dedicated brothers refused to go gently into



the night, and in an amazing show of KDR spirit and dedication, kept the chapter alive, growing, and succeeding. Their first-place award for philanthropy is a fine example of their commitment to rebuild. Their willingness to address long-standing financial problems is another demonstration of commitment. For its sheer dedication and refusal to give up, we proudly presented a chapter improvement award to the brothers of the Kappa Beta Chapter at Edinboro University of Pennsylvania.

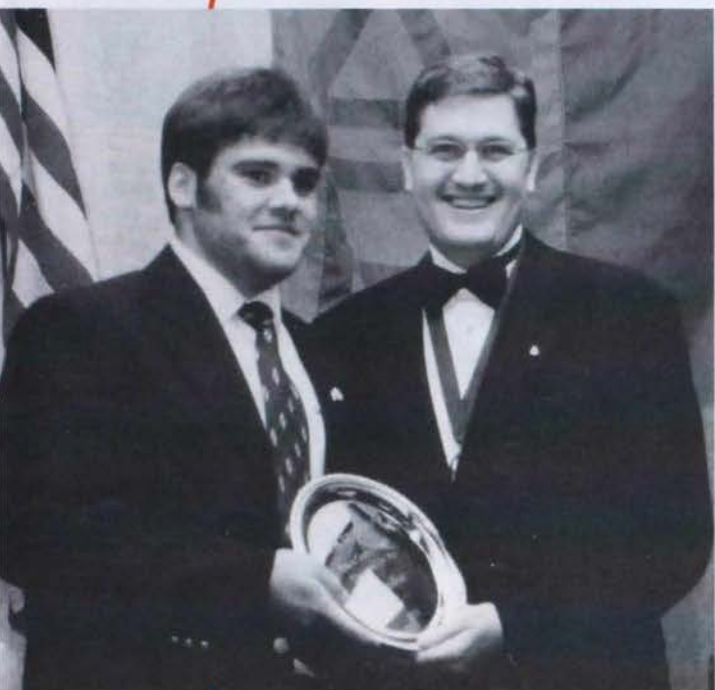
Mu Beta Chapter, Syracuse University

An award for chapter improvement went to another chapter that prospered despite adversity. The brothers of Mu Beta Chapter took a leap of faith in giving up their university-owned house for a chance to move onto Greek Row. Even when it became apparent that they would have to spend a year as a homeless chapter in order to do so. Rather than spend an idle year, the Mu Beta brothers got involved in their campus and com-



munity like never before, racking up an impressive record of achievements and good works completed, and then putting out the good word with an effective public relations program. For refusing to stay idle, for their ability to roll with the punches, KDR presented an award for chapter improvement to the Mu Beta Chapter at Syracuse University.

CHAPTER IMPROVEMENT


GRAND CONSUL'S AWARD FOR CHAPTER OF THE YEAR
Epsilon Chapter, Franklin College

The men of our Epsilon Chapter accumulated many awards this year. When they returned to school in the fall of 2002 with only 11 brothers, Epsilon went to work and recruited an excellent pledge class of 10 members, doubling the size of the chapter. Rather than lower their standards to get the numbers up, they once again had the highest GPA on their campus by a considerable margin. Not content to rest on their laurels, the chapter went on to compile an impressive list of achievements in almost every category: scholarship and recruitment, then community service, public and alumni relations, campus involvement, involvement in the National Fraternity, and they even won Homecoming. In 2002, this chapter won an award for chapter improvement, rebounding from a risk management violation, learning valuable lessons along the way. In 2003, KDR saw just what happens when you persevere and refuse to compromise. For being leaders in the classroom, campus, community, and Fraternity, the Grand Consul's Award for Chapter of the Year 2003 was presented to the Epsilon Chapter at Franklin College.

2003 Foundation Scholarship Winners

At the 2003 National Convention the Kappa Delta Rho Foundation sponsored a Scholarship Luncheon where 42 scholarships were awarded, which totaled almost \$40,000.

O.D. Roberts Scholarship

Jonathan Finity - Lambda Beta

Robert D. Lynd Scholarship

Allan Holzer - Lambda

Past Recipients Scholarship

Ty Lim - Lambda

Mayer Maloney Scholarship

Lauren Bowe - Alpha

Inactive Chapter Scholarship

Lauren Bowe - Alpha

H.E. Shackelton Scholarship

Benjamin Chaika - Lambda

Wally Miller Scholarship

Jonathan Gray - Lambda

General Graduate Scholarship

Jonathan Gray - Lambda

Pi Alumni Scholarship

Mark DeFalco - Iota Beta

Beta Chapter Scholarship

Matthew Tyhach - Beta

Delta Chapter Scholarship

Saurabh Arora - Delta

Zeta Chapter Scholarship

Jason Gides - Zeta

K. Kramer Scholarship

Frank Tedesco - Zeta

Guy Davis Scholarship

Stuart Chen - Eta

William J. Paris Scholarship

Vincent Klos - Eta

Dale Schaffener Scholarship

Adam Freda - Eta

Thomas Burns Scholarship

Jacob DiCiaula - Eta

Theta Veterans Memorial Scholarship

Matthew Tebbe - Theta

Theta Chapter Scholarship

Matthew Tebbe - Theta

W.C. Hogan Scholarship

Matthew Tebbe - Theta

John Carl Scholarships

Blake Strouse - Theta

Buck Martin - Upsilon Alpha

Thomas McClelland - Upsilon Alpha

Lambda Scholarship

Benjamin Chaika - Lambda

Nu Scholarship

James Brooks - Nu

Rho Alumni Scholarships

Lee Goldfarb - Rho

Peter Gray - Rho

Michael Greenfield - Rho

Matthew Haddad - Rho

Alex Karapetian - Rho

Thomas Kennedy - Rho

James LaBuz - Rho

James Murphy - Rho

Kavon Nasabzadeh - Rho

Michael Tuller - Rho

John Veltri - Rho

David Watts - Rho

Sammy Briggs Scholarship

Michael Phillips - Phi Alpha

C.B. Martin Engineering Scholarship

Vincent Gallo - Psi Alpha

Matthew Tyhach - Beta

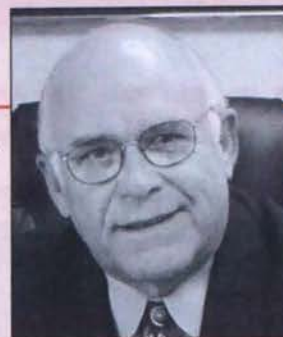
Gordon Johnson Law Scholarship

Jeff Anbinder - Beta

Michael McCarthy Architect Scholarship

Eric Hornick - Alpha Gamma

Kappa Delta Rho Foundation



Dear KDR Brothers,
It was with a deep sense of humility, pride and commitment that I accepted the position of President of your Foundation at the annual convention of Kappa Delta Rho this past August in St. Louis. Humility from the standpoint of those dedicated brothers who have served in this capacity before me; pride in the great Fraternity in which we are able to serve if only as a small payback for those outstanding values received as young men, and commitment in the undertaking of the great task that lies ahead. By comparative standards, the KDR Foundation is young in years of service and we've got a lot of catching up to do, but we've got miles and miles of heart, as the song goes!

The Foundation is the financial bedrock of our Fraternity and it provides in excess of 25 percent of the Fraternity's annual budget in addition to providing academic scholarships to our worthy undergraduate members. It is the major benefactor of the Williams Leadership Academy held in conjunction each year with the annual convention and provides necessary funding for the various leader-

ship conclaves held throughout the year in various parts of the country. Through these activities, leadership is bred and nurtured within our undergraduate members to prepare them for leadership positions in business, industry, education, the professions and government in the years to come. So, we truly are investing in the lives of students.

In order to continue its vital work to build a stronger Fraternity on a chapter-by-chapter basis and continue investing directly in the scholastic and leadership activities of our undergraduate brothers, the Foundation needs your financial assistance. In addition to our various annual endowment programs, the Foundation also must solicit funding for its general fund which directly assists the Fraternity financially and runs the day-to-day operations of the Foundation.

Our General Fund Campaign began in July of this year and will continue throughout the 2003-04 fiscal year. All contributions to the Kappa Delta Rho Foundation are tax deductible. I urge you to financially support your Foundation through direct cash gifts so that the legacy of Kappa Delta Rho Fraternity will contin-

ue well into the future. Also, if you wish to make a provision in your will or specifically assist the Foundation through life insurance, please contact us for information on our Heritage Society planned giving programs. Please use the response form and envelope provided in this issue to return your gift.

Finally, I want to welcome back to the Foundation a truly loyal and dedicated KDR. Bill Paris, Eta '87, former Executive Director of the Fraternity and later Director of the Foundation, has returned to the Foundation as Director of Development. We are, indeed, fortunate to again have the expertise, experience, and dedication of Bill Paris.

Thank you, Brothers, and I look forward to your continued support.

Fraternally,

Thomas V. McComb, Nu '59
President

Heritage Society

The Heritage Society is the gift recognition society for the alumni and friends of the Kappa Delta Rho Foundation who have included the Foundation in their estate plans. The following information is designed to give you some ideas on ways to include the Kappa Delta Rho Foundation in your estate plans.

Bequest in your will

One of the simplest ways to make a gift to the Kappa Delta Rho Foundation is to include the Foundation as a named beneficiary in your will. You can make a bequest of a specific amount, or a percentage of your estate. For instance, "I leave \$10,000 to the Kappa Delta Rho Foundation, a PA corporation, for its general educational purposes" or "I leave XX percent of my estate to the Kappa Delta Rho Foundation."

Named Beneficiary

You can name the Kappa Delta Rho Foundation as a full or partial beneficiary on your investment or retirement accounts. For instance, you might have an IRA or 401(K) plan. These plans include mutual funds and other investment accounts, most of which permit you to name the beneficiary to receive the assets if something happens to you.

Life Insurance

Another common way to make an estate gift is to give the Foundation a paid-up life insurance policy or name the Foundation as a beneficiary on an existing policy. For instance, you could name the Foundation as a full or partial beneficiary on any life insurance provided by your employer. You could also buy a new life insurance policy and make the Foundation the owner. As you make payments, they would be tax deductible to you as a charitable contribution.

Gift Annuity

The Kappa Delta Rho Foundation offers a complete gift annuity program. This type of planned gift involves a gift of assets to the Foundation. At the time of transfer, you enter into a contract with the Foundation to pay you an income for your life or for the life of you and your spouse. The rate varies depending upon your age. The amount of your present income tax charitable deduction will vary depending on your age, the rate of return and the kind of assets used to fund the annuity.

Charitable Remainder Annuity Trusts (CRAT)

This kind of trust involves a transfer of assets to the trust. The gift is irrevocable. The donor retains an income for life from the trust. The charitable income tax deduction will vary depending upon the age of the donor, whether the income is for one or two lives and the rate of return. The income provided from this trust is fixed at the time the trust is created and will not vary.

Charitable Remainder Unitrust (CRUT)

This kind of trust is very similar to the Charitable Remainder Annuity Trust. The gift is irrevocable and the donor retains an income from the trust. The charitable income tax deduction will vary depending upon the age of the donor, whether the income is for one or two lives and the rate of return. This trust varies from the Annuity Trust in that the rate of return will vary depending upon the

GIFTS BY AMOUNT

There are a number of different giving categories within the KDR Foundation. Some are for gifts that are unrestricted. Some are for gifts from parents and friends. Some are endowment gifts. Some are scholarship gifts. The following list shows the total given by members and friends from July 1, 2002 through June 30, 2003. The lowest gift level listed is \$100.

\$10,000 AND UP

John C Carl, Theta '51 (dec)
Rho Alumni Corporation
Andrew F Barth, Nu Alpha '83

\$5,000 - \$9,999

James H Buterbaugh, Zeta '55
William J Paris, Eta '87
Gordon G Johnson,
Lambda '26 (dec)
Thomas V McComb, Nu '59
J Hall Jones, Lambda Beta '91

\$2,500 - \$4,999

Mrs Commerford B Martin, Beta '33
David R Hamrick, Zeta '57
Arthur S Nelson, Eta '32
William M Goodwin, Nu '61
Thomas C Lockwood, Nu '56
Robert L Swinney, Sigma '58
Earl W Stolz II, Upsilon Alpha '92

\$1,000 - \$2,499

Mr & Mrs Victor Ugolyn
Thomas S Loane, Beta '67
Paul A Downes, Gamma '68
R Marshall Phillips, Zeta '60
Mrs. Thomas P Burns, Eta '74
Randall D Johnson, Eta '74

Keith R Meister, Eta '96
Thomas M Skafidas, Eta '74
David A Mosborg, Eta '78
Michael E Mueller, Eta '95
Mark W Paradies, Eta '77
David L Rathgeb, Eta '73
Troy L Reed, Eta '75
Philip R Troyk, Eta '74
William C Benton, Theta '59
Arnold E Denton, Theta '49
V Richard Miller, Theta '63
Rudolph J Tekaucic, Kappa '60
Richard O Jones, Nu '64
Jon P Pensyl, Pi '60
Richard D Kline, Rho '61
Howard A Rubin, Rho '77
John W Irving, Sigma '63
Loran L Stewart, Sigma '32
James C Hubbard, Psi '66
Douglas M Rammel, Pi Alpha '90

\$750 - \$999

Joseph D Lezark, Eta '77
Timothy F Moore, Eta '68
Gerald L Murray, Theta '66
Donald K Wemlinger, Nu '66
Randal S Saunders, Sigma '79
John V Dempsey, Jr, Upsilon Alpha '90

\$500 - \$749

Robert P Youngman, Alpha '64
Scott A Bailey, Zeta '69
Paul F Hummer II, Zeta '63
Robert J Knourek, Eta '73
Anthony R Pasquinelli, Eta '56
Kenneth J Krynicki, Eta '73
Bobby G McCormick, Eta '79
John Doddridge, Theta '61
Bimal N Saraiya, Theta '00
Peter W Strong, Theta '49
Roy P Jackman, Iota '49
Robert D Lynd, Iota '67
Lawrence L Swearingen, Nu '64
James M Anderson, Rho '63
Edward B Curtis, Rho '62
Ray C Hunt, Jr, Rho '53
David L McLuckie,
Gamma Alpha '71
Roderick B Covlin, Nu Alpha '96
Mark S West, Upsilon Alpha '88
Scott M Smaniotto,
Alpha Beta '93
Christopher K Gordon, Zeta Beta '95
Jonathan H Lay, Mu Beta '99

\$250 - \$499

Roy P Allen, Beta '56
Robert D Corrie, Beta '53
Howard F Crumb, Beta '53
Ronald C Dunbar, Beta '57
Walter R Stillman, Beta '56
Joseph Youn, Beta '91
Carl T Mitchell, Gamma '42
David G Lazarus, Delta '00
David R Coffin, Epsilon '68
P Duane Walker, Zeta '53

Donald P Phillips, Zeta '57
Ronald L Stief, Zeta '53
David A Fehrenbacher, Eta '78
Andrew W Hibbel, Eta '90
David C Lauder, Eta '71
Vincent J Thompson, Eta '83
David W Morley, Theta '65
Russel E Patton, Theta '51
Elmer E Naugle, Iota '50
Angelo J Pegno, Iota '53
Alan T Lord, Kappa '72
Stephen R Branam, Nu '69
Ronald G Clark, Nu '65
James R Hetherington, Nu '53
Mark N Lundgren, Nu '70
George W Neal, Nu '57
John R Probert, Rho '37
Patrick B Mikesell, Omega '62
Edward L Bowes, Alpha Alpha '63
Jason S Salegna, Lambda Alpha '97
Peter Byrne, Tau Alpha '88
Joshua L Smith, Alpha Beta '93
Richard T Barbour, Epsilon Beta '89
Benjamin K Willis, Zeta Beta '96
Brian J Stumm, Iota Beta '92
Paul N Hajjar, Lambda Beta '00

\$100 - \$249

Mr & Mrs Vincent R DeFina
Mr & Mrs David M Moyer
Mr & Mrs Joseph F Quidone
Mr Kevin Trumpower
John A Moser, Alpha '61
Harry Rossi, Alpha '43
Raymond B Strong III, Alpha '91

value of the trust assets. For example, if you retain an income of 7 percent on \$100,000 in principal, the return in year one is \$7,000. If the principal appreciates by 10 percent so that in year two it is \$110,000, then at 7 percent your return is \$7,700.

Charitable Lead Trust (CLT)

This kind of trust is commonly used to permit a donor to take certain tax advantages and still end up conveying his/her assets to their heirs. A CLT allows a donor to create a trust with a transfer of assets. By the terms of the trust, the trust will last for a period of years. The income payments from the trust will go to the charity as set forth by the donor. At the end of the trust, the principal reverts back to the heirs of the donor. The donor gains tax advantages since the gift places the assets out of his/her control and places the income payments in the hands of the charity.

Heritage Society members

(who have not requested to remain anonymous):

Ferd B Ensinger, Alpha '44
Gordon E Hoyt, Alpha '36
Robert A Jones, Alpha '59
James W Kitchell, Alpha '51
Ronald C Dunbar, Beta '57
Paul A Downes, Gamma '69
Thomas R Jensen, Zeta '50
Timothy F Moore, Eta '68
Arthur S Nelson, Eta '32
William J Paris, Eta '87
J Gregory Carl, Theta '80
Charles P Hendricks, Theta '56
Daniel R Johnsen, Theta '62
George J Peer, Theta '45
Michael P Pumilia, Theta '71
John D Winters, Jr., Theta '55

Lee H Idleman, Iota '54
Allen L Shumard, Kappa '30
Christopher Harley, Lambda '74
Thomas J Linnemeier, Nu '58
Thomas C Lockwood, Nu '56
Thomas V McComb, Nu '59
Max H Schulze, Nu '61
Maurice F Ronayne, Xi '51
Ray C Hunt, Jr., Rho '53
Loran (Stub) L Stewart, Sigma '32
James F Edgeworth, Sr., Psi '56
Nien-Tzu Chen, Alpha Alpha '94
Thomas B Delac, Jr., Pi Alpha '94
Dean B Rissolo, Rho Alpha '89
James D Carroll, Alpha Beta '93
Joseph W Rejuney, II, Epsilon Beta '90

This information is not intended to offer legal or tax planning advice and is not all inclusive. Anyone considering an estate gift should consult with their legal and/or financial advisors.

Ferdinand Wyckoff, Jr, Alpha '54	Raymond A Cramer, Jr, Eta '50	Walter A Molawka, Jr, Iota '71	Robert H B Wade, Rho '37
John G Youngman, Alpha '90	Douglas L Garwood, Eta '66	Daniel L Packer, Iota '67	John J Walsh, Rho '86
Richard L Haner, Beta '53	Douglas K Jackson, Eta '78	William D Schaeffer, Jr, Iota '70	J Scott Watson, Rho '78
Ralph L Higley, Beta '30	John W Kapala, Eta '68	Donald L McDowell, Kappa '57	James W Williams III, Rho '80
Richard G Jackson, Beta '63	George Korecky, Eta '50	Max C Weaver, Kappa '36	Gerald I Wilson, Rho '60
Victor F Janas, Beta '78	Norman G Kouba, Eta '54	Bruce T Coggins, Lambda '43	Clark F Canham, Sigma '66
Cornelius C Jones, Beta '53	Donald R Lathrop, Eta '53	Richard G Davis, Lambda '65	Harold K Meyers, Sigma '49
Vincent J Kiernan, Beta '81	Stephen A Lawrence, Eta '79	Cyril B Haworth, Lambda '37	William C Moller, Sigma '52
Daniel LaPlaca, Beta '96	Arnold L Lippert, Eta '31	John B Hendricks, Lambda '65	Craig B Peterson, Sigma '74
David L Ladd, Beta '58	Robert M Mitchell, Eta '38	W Harry Lange, Jr, Lambda '34	Earl W Dittman, Phi '53
Norbert A Lasher, Beta '39	Richard A Miyazaki, Eta '84	William J Morgan, Lambda '62	David M Bliley, Psi '62
Dale S Lazar, Beta '74	Patrick R Murphy, Eta '62	James F San Sebastian, Lambda '50	Roy W Crowe, Psi '80
David R May, Beta '80	Leif E Olsen, Jr, Eta '40	Byron C Coats, Mu '32	E Noel Faddis, Psi '58
Alonzo H Ross III, Beta '72	John G Powell, Eta '53	James L Babb, Jr, Nu '62	Roger B Ludlum, Psi '53
Hamilton Acheson, Gamma '31	Carl A Reed, Eta '79	R Michael Barnard, Nu '64	Gerald A Wasson, Jr, Psi '69
Richard S Beach, Gamma '48	Donald C Russell, Eta '70	Edward S Beach, Nu '69	Timothy G Rupert, Omega '68
Curtis L Pfaff, Gamma '48	Steven M Still, Eta '66	Kenneth A Beckley, Nu '62	Calvin J Arter, Alpha Alpha '60
Warren W Wagner, Gamma '43	Franklin J Vernon, Eta '34	William P Butz, Nu '65	James P Murphy, Alpha Alpha '59
John S Goodreds, Delta '56	Stanley W Woods, Jr, Eta '58	Stephen L Ernest, Nu '70	Frank W Harris, Beta Alpha '65
Paul B Ingrey, Delta '61	Urban H Anslinger, Theta '48	William R Fox, Nu '55	James M Leclair, Beta Alpha '66
Ellsworth P Johnson, Delta '44	J William Benson, Theta '51	Donald G Loftus, Nu '65	John J Zureck, Beta Alpha '63
John S Rothschild, Delta '49	J Gregory Carl, Theta '80	Thomas M McGlasson, Nu '65	Steven Schilson, Gamma Alpha '65
John P Wait, Delta '54	William L Coorsh, Theta '78	Wayne C Ponader, Nu '53	Matthew P O'Connor, Iota Alpha '83
Douglas R Black II, Epsilon '99	V Thomas DeVillie, Theta '62	Robert B Purdy, Nu '50	David V Trapani, Iota Alpha '84
James D Kowalski, Epsilon '57 (dec)	William A French, Theta '51	James H Ramsey, Nu '64	John F Kiernan, Nu Alpha '83
Ray A Alberigi, Zeta '57	Richard G Graves, Theta '55	Edward A Spray, Nu '63	Eric D Barbe, Pi Alpha '87
John E Booth, Zeta '51	Robert C Griffin, Theta '50	James T C Talbott, Nu '88	Joshua M Champion, Pi Alpha '96
Dusan Bratic, Zeta '68	Charles P Hendricks, Theta '56	Arthur H Smith, Xi '57	Craig A Gordon, Pi Alpha '87
James P Clugston, Zeta '58	Robert W Kropf, Theta '48	Thomas C Staples, Xi '78	James A Hart, Tau Alpha '95
Robert J Dankanyin, Zeta '56	Charles F Meinzer, Theta '87	Richard W Garman, Pi '53	Douglas M Miller, Tau Alpha (H)
Warren A Hunter, Jr, Zeta '69	Chad T Peck, Theta '97	Gary H Cassel, Rho '75	Daniel E Mashburn, Upsilon Alpha '87
Thomas R Jensen, Zeta '50	George S Peck, Theta '40	William R Dodds, Jr, Rho '74	V Shane Stover, Upsilon Alpha '89
Clayton F Ost, Zeta '55	George J Peer, Theta '45	Thomas R Dougherty, Rho '65	Donald A Ravasio, Chi Alpha '88
David W Reese, Zeta '71	Robert W Stalker, Theta '52	Henry Elion, Rho '54	John A Lucksinger, Zeta Beta '97
David Z Richards, Zeta '57	Werner C Trifshouser, Theta '56	John A Falcone, Rho '60	Kai U Gebhard, Theta Beta '91
Richard A Roschli, Zeta '56	Kenneth W Wysong, Theta '29	Walter B Gilmour, Rho '39	Kristofer A Block, Iota Beta '99
Leo P Russell, Zeta '41	Robert A Bavar, Iota '94	Daniel H Krombolz, Rho '54	Steven C Rapids, Iota Beta '91
Robert G Thomas, Zeta '55	George F Blades, Iota '54	Henry A Lee, Rho '51	Peter C Stoffel, Iota Beta '94
Oscar C Tissue, Jr, Zeta '51	Edward K Hoffman, Jr, Iota '68	Richard E Mueller, Rho '69	Steven T Barham, Lambda Beta '94
Daniel E Winslow, Jr, Zeta '48	Matthew W Leiphart, Iota '92	Jeffrey A Nelson, Rho '89	Jonathan Hotz, Mu Beta '94
Albert B Wrigley, Zeta '55	Richard H Leirer, Iota '66	Stephen P Otway, Rho '70	Michael W Rogers, Tau Beta '94
Larry S Beanblossom, Eta '73	John G Lore, Iota '67	Charles E Peterson III, Rho '69	D Will Plyler, Jr, Upsilon Beta '99
Gregory A Bell, Eta '81	Joseph I Marchese, Iota '98	John K Powell, Jr, Rho '72	
Taylor H Bell, Eta '62	Alexander McClinchie III, Iota '64	Roland Raver, Rho '35	
Daniel J Burns, Eta '80	John V Melick, Iota '93	William C Richtmyre, Rho '42	

GIFTS BY CHAPTER

Contributions by Chapter (Restricted and Unrestricted).

Gifts received from July 1, 2002 through June 30, 2003.

Number of contributions per chapter is equal to the number of contributions received. If a donor gave more than one time though, their name is only listed once.

Total number of chapters participating: 55

KDR SOCIETY, ALPHA CHAPTER KDR FRATERNITY, ALPHA CHAPTER MIDDLEBURY COLLEGE \$1,905

34 Contributions

Stephen H Arnold '41
Robert J Baskin '64
Peter N Bohn '43
Scott H Buzby '51
Roger L Easton '43
Lewis G Ensinger '44
Albert E Fiacre, Jr '72
Robert C Hall '65
John J Kalbacher '75
James J LaFronz '85
John A Moser '61

Russell A Norton '38
Charles P Puksta '49
Henry M Richardson '38
Nathaniel J Rockwell '82
Steven M Roser '65
Harry Rossi '43
G Crossan Seybolt, Jr '77
David D Steece '72
Peter T Stewart '71
Raymond B Strong III '91
Raymond E Walch '46
Ferdinand Wyckoff, Jr '54
John G Youngman '90
Robert P Youngman '64

BETA CORNELL UNIVERSITY \$8,425

54 Contributions

Roy P Allen '56
Jason H Biegelson '96
Benjamin R Chen '03
Joel E Cisne '04
Wesley A Clark '73
Robert D Corrie '53
Howard F Crumb '53
Bruce L Davis '60
Gordon R Dennis '54
Ronald C Dunbar '57
Charles H Fowler '73
Richard L Haner '53
David J Harding '72
Michael J Higley '98
Ralph L Higley '30
Richard G Jackson '63
Victor F Janas '78
Cornelius C Jones '53
Edward A Kelleher '03
Vincent J Kiernan '81
Storm E Kildoye '77
Daniel LaPlaca '96
Phillip LaRocca (H)

David L Ladd '58
Norbert A Lasher '39
Dale S Lazar '74
Dean B Livingston '72
Thomas S Loane '67
Mrs Commerford B Martin '33
David R May '80
William D Munch '76
Albert H Packer '53
James L Rose '40
Alonzo H Ross III '72
Bradford J Ross '81
Robert R Saltzman '75
Bruce W Saunders '61
Philippe G Savary '72
Walter R Stillman '56
J Walter Streett '63
Robert W Thomas '57
Scott D Thyng '72
Blaise P Vitale '84
Howard H Voelker '52
James J Whalen '57
Joseph Youn '91

GAMMA SUNY ALBANY \$1,910

13 Contributions

Hamilton Acheson '31
Richard S Beach '48
George E Decker '36
Paul A Downes '68
Harold A Haynes '38
Naoshi Koriyama '54
Herbert W Leneker '43
Carl T Mitchell '42
Curtis L Pfaff '48
Warren W Wagner '43

DELTA COLGATE UNIVERSITY \$1,520

32 Contributions

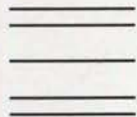
Alan S Anderson '70
James M Beverley, Jr '53
William C Brigham '44
Stanley W Chapman '68
Eric F M Chubenko '94
Herbert A Dietzel '52
Jack H Ehretzman '92
Seymour L Ellison '53
Peter L Frank '03

Robert L Glendening '71
John S Goodreds '56
Paul B Ingrey '61
Ellsworth P Johnson '44
David G Lazarus '00
Brian H Leventhal '92
H Paul Mosher '56
Richard L Naeye '51
Nicholas A Orsini '52
John S Rothschild '49
Robert G Schreiber '49
Jack F Sinn '43
Howard E Sutliff '50
George J Terra-Nova '62
James C Tomasi '51
John P Wait '54

EPSILON FRANKLIN COLLEGE \$845

17 Contributions

Robert E Addington '46
Douglas R Black, II '99
David R Coffin '68
Robert S Conner '65
Kevin D Elmore '85
William N Espy '72



PLACE
STAMP
HERE

Annual Fund
Kappa Delta Rho Foundation
P.O. Box 699
Greensburg PA 15601-0699



THE KAPPA DELTA RHO FOUNDATION
Investing in the Lives of Students

I want to make a difference! I enclose my tax-deductible contribution of

_____ (\$25) _____ (\$50) _____ (\$100) _____ (\$250) _____ Other

Please make your check payable to the Kappa Delta Rho Foundation or you can charge your donation to your Visa or Mastercard.

Card Number _____ Expiration Date _____

Visa Mastercard (Circle one)

Signature _____

_____ My employer will match my contribution; my matching gift form is enclosed!

To ensure proper credit, please complete the following:

Mr. _____

Chapter _____ Graduation Year _____

Number and Street _____

City _____ State _____ Zip _____

Phone () _____

Email _____

_____ *Note if new address*

Company _____

Position _____

_____ I have included the Kappa Delta Rho Foundation in my estate plans.

_____ I would like more information about gifts of property, stock, life insurance or other types of planned gifts to the Kappa Delta Rho Foundation

ANNUAL FUND – SPECIAL RECOGNITION CLUBS

FOUNDERS SOCIETY:

Grand Patron	\$10,000 and higher
Patron	\$5,000-\$9,999
Philanthropist	\$2,500-\$4,999
Benefactor	\$1,000-\$2,499

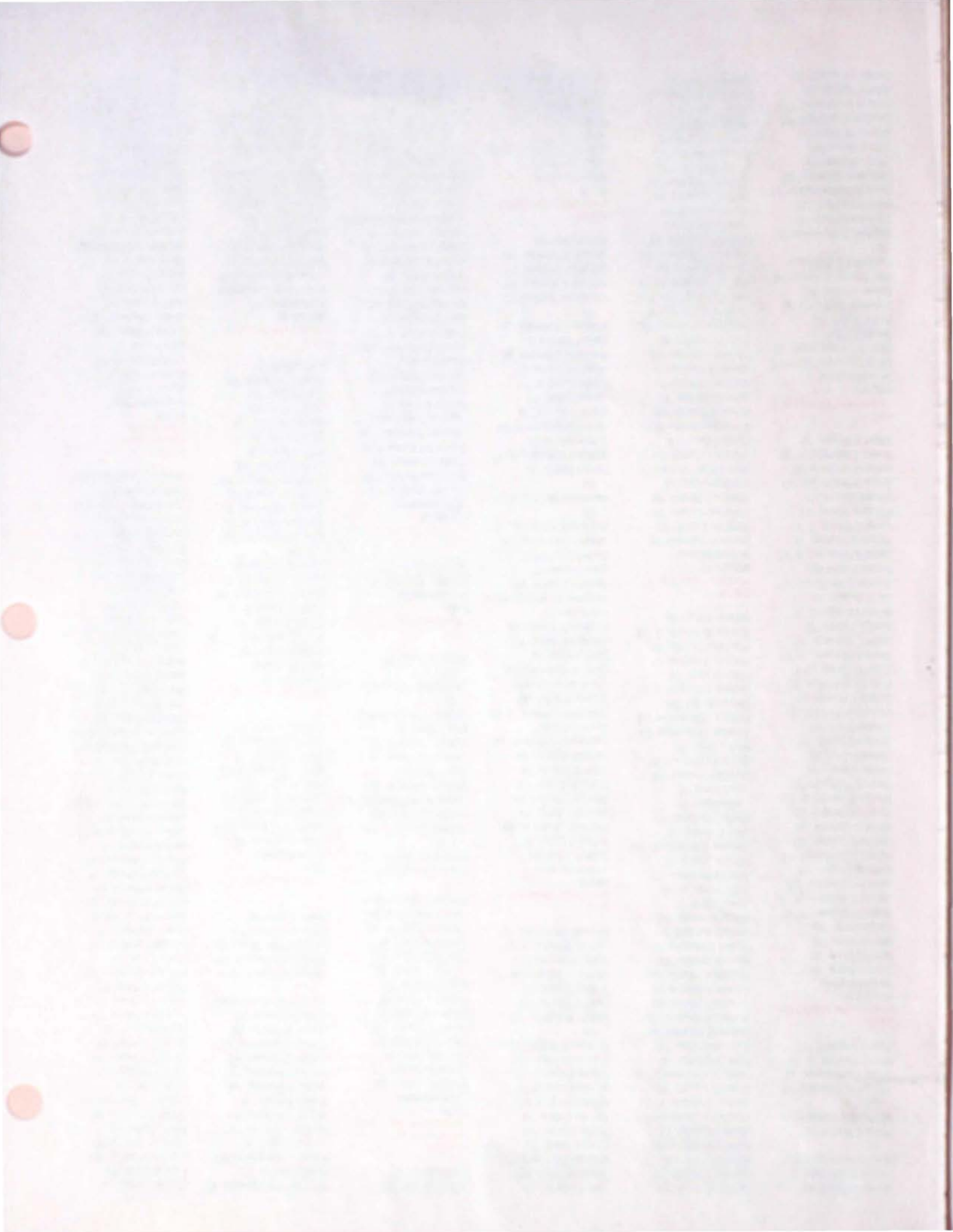
Other Recognition Clubs

Silver Club	\$35.00
Gold Club	\$50.00
Ruby Club	\$100.00
Sapphire Club	\$250.00
Emerald Club	\$500.00
Diamond Club	\$750.00

THIS FLAP IS GUMMED. MOISTEN, FOLD DOWN FLAP AND SEAL.



THE KAPPA DELTA RHO FOUNDATION
Investing in the Lives of Students





THE KAPPA DELTA RHO FOUNDATION

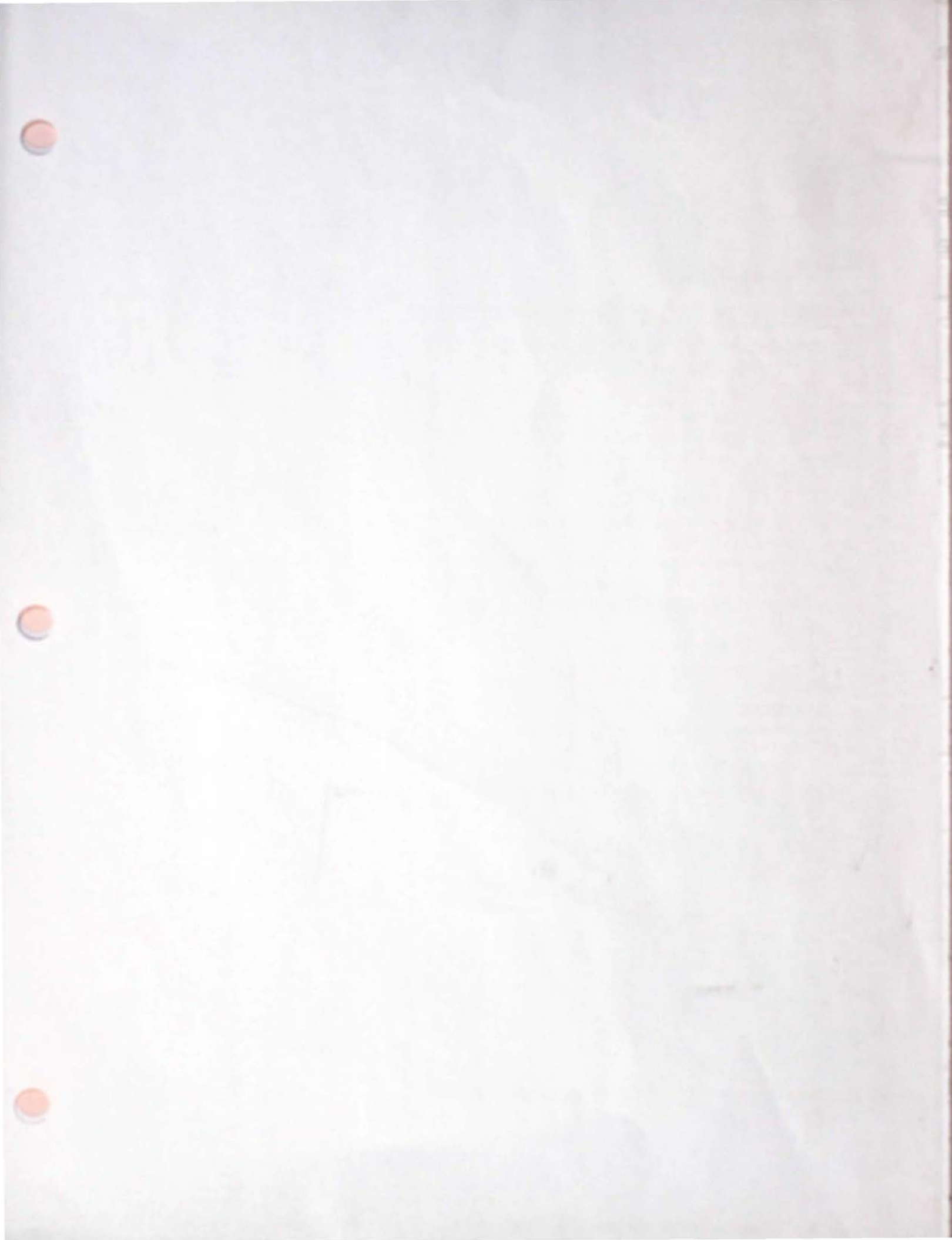
Investing in the Lives of Students

The Kappa Delta Rho Foundation was established in 1984 for the purpose of supporting educational and leadership programs and to provide scholarships as an **investment** in the lives of individual undergraduate KDR's.

Your donation matters! Since 1984, alumni support has enabled the Foundation to invest over \$1,000,000 in the lives of undergraduate KDR's in addition to supporting the Fraternity's educational programs. In addition, the Foundation has awarded nearly \$750,000 in scholarships to deserving KDR's.

Please consider joining the more than two thousand KDR Brothers who make tax-deductible contributions to the Foundation each and every year.

Your support does matter!
Together, we are making a difference!



Myron C Knauff '41
James D Kowalski '57
Marvin Paul Manteuffel '63
Frank K Martin '52
Matthew D Runnebohm '04
William W Scheeley '56
Henry F Steinkamp '52
Noel A Thomas, Jr '70
Robert F Volland '43

ZETA
PENN STATE UNIVERSITY
\$14,321.59

48 Contributions

Ray A Alberigi '57
Scott A Bailey '69
John E Booth '51
Dusan Bratic '68
Anson C Burwell, Jr '42
James H Buterbaugh '55
James P Clugston '58
Michael S Cover '78
Robert J Dankanyin '56
Matthew D Glass '83
David R Hamrick '57
Paul F Hummer II '63
Warren A Hunter, Jr '69
Thomas R Jensen '50
Steven C Kelly '84
Vernon A Long '65
William L Nichol '59
Clayton F Ost '55
Michael B Pennock '67
Donald P Phillips '57
R Marshall Phillips '60
David W Reese '71
Harry B Rhoades, Jr '51
David Z Richards '57
Patrick J Rielly '58
Richard A Roschli '56
Leo P Russell '41
Charles G Schlichter '67
Ronald L Stief '53
David N Summers III '62
Robert G Thomas '55
Oscar C Tissue, Jr '51
P Duane Walker '53
John H Warren '70
Bruce H Whitenight '36
Harlan E Williams '60
Daniel E Winslow, Jr '48
Albert B Wrigley '55

ETA
UNIVERSITY OF ILLINOIS
\$29,109

87 Contributions

Gerry L Beanblossom '73
Larry S Beanblossom '73
Gregory A Bell '81
Taylor H Bell '62
Robert M Bordeaux '69
Daniel J Burns '80
Mrs Thomas P Burns '74
Raymond A Cramer, Jr '50
Stephen R Domianus '77
Clarence L Dunn '47
Brian S Faulkner '96
David A Fehrenbacher '78
Douglas L Garwood '66
John L Heckel '53
John E Henry '64
Andrew W Hibbel '90
Douglas K Jackson '78
Randall D Johnson '74
John W Kapala '68
Robert J Knourek '73

George Korecky '50
Norman G Kouba '54
Kenneth J Krynicki '73
Donald R Lathrop '53
David C Lauder '71
Stephen A Lawrence '79
Joseph D Lezark '77
Arnold L Lippert '31
Bobby G McCormick '79
Keith R Meister '96
Scott M Meister '99
Robert M Mitchell '38
Richard A Miyazaki '84
Timothy F Moore '68
David A Mosborg '78
Michael E Mueller '95
Bruce A Mullins '79
Patrick R Murphy '62
Richard A Naatz '50
Arthur S Nelson '32
Brian D Noel '77
Leif E Olsen, Jr '40
Mark W Paradies '77
William J Paris '87
Anthony R Pasquinelli '56
John G Powell '53
David L Rathgeb '73
Carl A Reed '79
Troy L Reed '75
Donald C Russell '70
Norbert J Sargent '57
Paul C Sisco '50
Thomas M Skafidas '74
Roger E Steingraber '52
Steven M Still '66
Vincent J Thompson '83
Philip R Troyk '74
Gregory R Uhrhan '01
Franklin J Vernon '34
Stanley W Woods, Jr '58
William P Zorc '80

THETA
PURDUE UNIVERSITY
\$88,973.13

66 Contributions

Urban H Anslinger '48
Stephen D Arvin '85
J William Benson '51
William C Benton '59
J Gregory Carl '80
John C Carl '51 (dec)
William L Coorsh '78
David A Crow '74
V Thomas DeVille '62
Arnold E Denton '49
John Doddridge '61
William A French '51
James W Graves '59
Richard G Graves '55
Robert C Griffin '50
Martin W Grossman '62
Thomas L Guthrie '62
Maurice E Hamilton '56
Charles P Hendricks '56
John D Hylkema '82
James D Jasiewicz '99
Daniel R Johnson '62
John E Kanally '40
Robert W Kropf '48
William J Landis '56
Charles F Meinzer '87
V Richard Miller '63
David W Morley '65
Gerald L Murray '66
Russel E Patton '51
Chad T Peck '97
George S Peck '40
George J Peer '45

John E Picken '77
James W Prech '65
Michael P K Pumilia '71
Craig S Reber '73
Phillip J Reber '86
Dennis M Ring '63
William J Rippe '65
Bimal N Saraiya '00
James H Seaton '55
C Dwayne Sloan '37
Andrew W Smithberger '54
Robert W Stalker '52
Peter W Strong '49
T Terry Tousey '77
Werner C Trifftshouser '56
Robin N Wienke '65
John D Winters, Jr '55
Kenneth W Wysong '29

IOTA
BUCKNELL UNIVERSITY
\$4,570

49 Contributions

Scott A Alfieri '94
Robert A Bavar '94
Richard C Bean, Jr '88
Joseph J Berry '96
George F Blades '54
Bruce S Cooper '72
John M D'Elisa '85
Michael S Davis '64
Lawrence N Gardner '66
David E Hill '64
Edward K Hoffman, Jr '68
Harvey P Huber '48
Roy P Jackman '49
Kevin M Kaminski '95
Colin E Kane '96
James A Kellogg '62
Stephen R Knapp '84
Ted Kullen '57
Matthew W Leiphart '92
Richard H Leirer '66
John G Lore '67
Robert D Lynd '67
Joseph I Marchese '98
Anthony B Markunas, Jr '66
Alexander McClinchie III '64
John V Melick '93
Walter A Molawka, Jr '71
D Kyle Morris '95
John K Musgrave IV '88
Elmer E Naugle '50
John C Nixon '40
Daniel L Packer '67
Angelo J Pegno '53
Frederick J Roeper '86
Keith F Rozolis '81
William D Schaeffer, Jr '70
Richard H Trefflich '65
Andrew D Wenner '01
William E Whitney '74
William M Winkler '70
Elliot Zulver '69

KAPPA
OHIO STATE UNIVERSITY
\$1,760

10 Contributions

J Richard Barth '69
James R Goodrich, Jr '69
Alan T Lord '72
Donald L McDowell '57
F Paul Nestor '52
Stephen E Sinky '76
Rudolph J Tekaucic '60

Max C Weaver '36
Paul L Weller '35

LAMBDA
UNIVERSITY OF CALIFORNIA, BERKELEY
\$6,776

34 Contributions

Norbert C Babin '56
Donald L Bartels '71
Douglas J Bell '64
Marc A C Brandt '84
Bruce T Coggins '43
Richard G Davis '65
Donald L Edgar '52
Hugh F Ewing '49
Wilfred J Fekeci '80
Paul D Griem, Jr '61
Cyril B Haworth '37
Donald L Haworth '50
John B Hendricks '65
Ronald W Hendrickson '51
Brann Johnson '68
Gordon G Johnson '26 (dec)
W Harry Lange, Jr '34
Leonard J Lepera (H)
Robert H McPhillamey '39
William J Morgan '62
Paul F Pick '39
Louis Raun-Linde '49
Robert J Roberts '53
Ned T Ryan '65
James F San Sebastian '50
Theodore R Thompson '37
Byron K Wood '63

MU
UNIVERSITY OF MICHIGAN
\$160

2 Contributions

Robert L Boynton '37
Byron C Coats '32

NU
INDIANA UNIVERSITY
\$19,284.99

69 Contributions

James L Babb, Jr '62
R Michael Barnard '64
Edward S Beach '69
Kenneth A Beckley '62
Stephen R Branam '69
Thomas E Brethauer '57
William P Butz '65
Stephen C Chaleff '48
Andrew J Chmiel '65
Ronald G Clark '65
James D Clements '60
Emery E Coon, Jr '58
John R Dragoo '48
Stephen L Ernest '70
Herbert E Farrell '44
William R Fox '55
James R Gambrell '61
William M Goodwin '61
James E Hertling '59
James R Hetherington '53
Mark A Jones '77
Richard O Jones '64
Allen W Koehlinger '55
Weldon H Leimer '60
Thomas C Lockwood '56
Donald G Loftus '65
Mark N Lundgren '70
Jody R Maze '93
Thomas V McComb '59
James D McConnell '49

Thomas M McGlasson '65
Edwin D Miller '72
Robert J Musselman '61
George W Neal '57
George T Orfanos '44
Wayne C Ponader '53
Robert B Purdy '50
James H Ramsey '64
Ronald L Reinking '59
Robert W Risteen '49
Stanley C Salomon '55
James W Sherby '68
Edward A Spray '63
Lawrence L Swearingen '64
James T C Talbott '88
Randel E Trebing, Jr '69
Donald K Wemlinger '66
Richard S Wilson '58
David R Zaun '64

XI
COLBY COLLEGE
\$515

13 Contributions

A Lawrence Barr '63
Richard D Goodridge '44
Richard B Mack '51
Donald H Rhoades '33
Abbott E Rice '54
Maurice F Ronayne '51
Arthur H Smith '57
Thomas C Staples '78
John M Whittier '60

PI
GETTYSBURG COLLEGE
\$1,875

26 Contributions

Robert H Boyer '60
Cody F Burkindine, Jr '48
Charles P Cable '56
G David Deardorff '63
William R Deisinger '68
Richard W Garman '53
James M Henderson, Jr '55
James H Honafius '65
Joseph E Kelley III '65
Robert L Klinedinst '47
Richard E Lippert '53
J Norman Miller, Jr '55
Edward C Muller '49
John R Nagle '65
Jon P Pensyl '60
Ivan J Punchatz '71
John J Reilly '54
Jaye R Ryan '55
Robert J Trewella '48
Lance G Valt '64

RHO
LAFAYETTE COLLEGE
\$22,821.26

82 Contributions

Rho Alumni Corporation
James M Anderson '63
David K Bilheimer '61
Douglas S Brown '91
Gary H Cassel '75
David T Clark '68
James A Coccagna '77
Robert G Cucinell '63
Richard H Cummings, Jr '69
Edward B Curtis '62
William R Dodds, Jr '74
Thomas R Dougherty '65
Henry Eliot '54
John A Falcone '60
Marc J Gallagher '93

Richard J Gant '76
S Scott Gates '91
Charles J Gatt, Jr '85
Walter B Gilmour '39
Fred C Guest '59
Robert C Hamlyn '50
Charles W Harrison '75
Walter Hartl '49
David P Hourigan '75
Robert B Howard '42
David R Hughes '69
Ray C Hunt, Jr '53
Eugene B Kelsey '79
Bruce E Kleinert '71
Richard D Kline '61
Daniel H Krombolz '54
Henry A Lee '51
George R Lyles III '86
Scott L Mangan '75
John K McDonald '49
Richard E Mueller '69
Jeffrey A Nelson '89
Stephen P Otway '70
Charles E Peterson III '69
John G Polivka '49
John K Powell, Jr '72
John R Probert '37
Charles M Puckette IV '59
Roland Raver '35
Robert A Reich '51
Kevin M Rhodes '82
William C Richtmyer '42
James H Riefenstahl '65
Howard A Rubin '77
John A Snyder, Jr '41
Roy H Stetler, Jr '36
Donald S Straub '59
Nicholas J Sumas II '91
James L Terhune '65
Robert B Thompson III '53
Robert H B Wade '37
Harlow E Waite '57
John J Walsh '86
J Scott Watson '78
Mark R Whitley '70
Berkeley S Wildman '31
James W Williams III '80
Gerald I Wilson '60
Justin B Wineburgh '94
Harrison F Wood '51
Edward O Woolridge '52

SIGMA
OREGON STATE UNIVERSITY
\$7,365

40 Contributions

Myron C Andrew '71
Richard L Baker '65
Clark F Canham '66
Jack Foster '55
Gerald W Harte '58
James E Huskey '55
John W Irving '63
Lyle T Lindsay '47
Robert E Loud '58
Nels J Martin '69
Howard A McClellan '64
John R McClure '50
Gene R Meyer '63
Harold K Meyers '49
William C Moller '52
Kenneth E Moulton '79
Craig B Peterson '74
Mark S Pfister '84
John L Robbins '72
Edwin K Robinson '55
Randal S Saunders '79
John R Sinnhuber '67

Loran L Stewart '32
Robert L Swinney '58
Travis J Trupp '91
George F Zimmer '69
Emanuel C Zografos '50

**UPSILON
FRESNO STATE
UNIVERSITY**

\$50
2 Contributions
Frank W Kinsey '52

**PHI
UNIVERSITY OF
OKLAHOMA**

\$160
3 Contributions
Earl W Dittman '53
Thomas G Robinson '51

**PSI
LYCOMING COLLEGE**

\$2,248.90
18 Contributions
David M Billey '62
Roy W Crowe '80
E Noel Faddis '58
Edward J Genther III '71
David A Himes '58
Corey T Hnat '95
Richard G Houck '67
James C Hubbard '66
Luke H Kauffman '62
Roger B Ludlum '53
Jay H McCormick '60
C Alan Stephan '57
William G Toner '86
David W Vilushis '79
Gerald A Wasson, Jr '69
James T Wolyniec '60

**OMEGA
INDIANA UNIVERSITY OF
PENNSYLVANIA**

\$742
12 Contributions
James E Lore '76
Jeffrey E Meek '68
Patrick B Mikesell '62
John C Rose III '92
Timothy G Rupert '68
John M Sakolan '73
Frederick W Seinfeld (H)
Thomas E Shirley '64
Charles Szvitch '61
John D Varner '57

**ALPHA ALPHA
LOCK HAVEN UNIVERSITY**

\$910
14 Contributions
Calvin J Arter '60
Edward L Bowes '63
Richard L Funk '59
Frank D Geno '59
Stephen B Morley '58
James P Murphy '59
Michael L Peters '91
Gene E Rexford '62
Dale T Sphar '63
Jon R Suders '93
M Gordon White, Jr '59

**BETA ALPHA
CW POST COLLEGE**

\$475
8 Contributions
Frank W Harris '65
Richard T Hennessy '65
James M Leclair '66
Christopher Wales '84
John J Zureck '63
Charles H Zwicker (H)

**GAMMA ALPHA
BRADLEY UNIVERSITY**

\$850
7 Contributions
Francis C Furman '77
Richard E Kurz '68
David L McLuckie '71
Steven Schilson '65
John A Thorp '71
Gregory A Wiczorek '73
Timothy R Zeigler '71

**EPSILON ALPHA
LEWIS UNIVERSITY**

\$110
3 Contributions
Randall H Fleck '75
Dennis J Turner '75

**ETA ALPHA
ROBERT MORRIS
UNIVERSITY**

\$40
2 Contributions
Ronald R Ramer, Jr '95

**IOTA ALPHA
UNIV. OF PITTSBURGH
AT JOHNSTOWN**

\$305
6 Contributions
Mathew P O'Connor '83
Clayton J Stahl '84
David V Trapani '84
Brian J Winters '88

**LAMBDA ALPHA
GANNON UNIVERSITY**

\$515
12 Contributions
Richard M Andre '91
Christopher M Cornue '92
Christian B Owen '98
Jason S Salegna '97

**MU ALPHA
WEST VIRGINIA
UNIVERSITY**

\$10
1 Contribution
Dwayne E Porter '85

**NU ALPHA
COLUMBIA UNIVERSITY**

\$20,910
6 Contributions
Joseph J Adipietro '87
Andrew F Barth '83
Roger W Bowers '88
Matthew E Brooks '90
Roderick B Covlin '96
John F Kiernan '83

**XI ALPHA
TEMPLE UNIVERSITY**

\$30
1 Contribution
Paul T Richey '92

**OMICRON ALPHA
RUTGERS UNIVERSITY**

\$200
3 Contributions
James A Balog '94
Glenn T Gnrrep
Michael J Kiernan '86

**PI ALPHA
UNIVERSITY OF TOLEDO**

\$1,520
10 Contributions
Eric D Barbe '87
Joshua M Champion '96
Craig A Gordon '87
Thomas O McGannon '90
Douglas M Rammel '90
David E Shultz '88
William J Stuchal '99

**RHO ALPHA
BRYANT COLLEGE**

\$40
1 Contribution
Michael A White '91

**SIGMA ALPHA
HOFSTRA UNIVERSITY**

\$10
1 Contribution
Alfred M DiBernardo '87

**TAU ALPHA
RADFORD UNIVERSITY**

\$760
8 Contributions
Peter Byrne '88
Evan Fabricant '98
James A Hart '95
Douglas M Miller (H)
Eric D Padgett '86

**UPSILON ALPHA
ST LOUIS UNIVERSITY**

\$4,924.63
12 Contributions
John V Dempsey, Jr '90
Daniel E Mashburn '87
Paul J Nager '91
Earl W Stolz II '92
V Shane Stover '89
Mark S West '88

**PHI ALPHA
CLARION UNIVERSITY**

\$185
5 Contributions
Michael D Ferretti '99
Scott A Johnson '96
Ryan H Loberg '88
Gerald E Stebbins '88

**CHI ALPHA
UNIV. OF PITTSBURGH
AT GREENSBURG**

\$150
3 Contributions
Ronald M DeGuffroy '88
Donald A Ravasio '88

**ALPHA BETA
UNIVERSITY OF
DELAWARE**

\$800
7 Contributions
Thomas R Masino, Jr '91
Scott M Smariotto '93
Joshua L Smith '93
Michael A Tigani '89

**BETA BETA
BALL STATE UNIVERSITY**

\$25
1 Contribution
Michael W Wilkins '97
**GAMMA BETA
VIRGINIA TECH**
\$25
1 Contribution
Manuel J Fernandez '89

**EPSILON BETA
OLD DOMINION
UNIVERSITY**

\$550
5 Contributions
Richard T Barbour '89
Kenneth L Felix II '91
Mark N Sandler '89
Raymond H Springsteen '92

**ZETA BETA
TARLETON STATE
UNIVERSITY**

\$1145
8 Contributions
Christopher K Gordon '95
Dusty K Joiner '93
William H Kelly
Jason T Lovell '98
John H Lucksinger '97
Patrick H McCarty '03
Benjamin K Willis '96

**THETA BETA
NEW YORK INSTITUTE
OF TECHNOLOGY**

\$175
4 Contributions
Douglas P Barna (H)
Kai U Gebhard '91
Steen M Lawler '92

**IOTA BETA
ROCHESTER INSTITUTE
OF TECHNOLOGY**

\$650
6 Contributions
Kristofer A Block '99
Paul J Lindars '95
Mark Nowakowski '92
Steven C Rapids '91
Peter C Stoffel '94
Brian J Stumm '92

**LAMBDA BETA
JAMES MADISON
UNIVERSITY**

\$9,375
12 Contributions
Steven Barham '94
Paul N Hajjar '00
J Hall Jones, Jr '91
Daniel K Lowrey '91
Peter J Tartaro '00
Bradley S Witzel '94

**MU BETA
SYRACUSE UNIVERSITY**

\$700
4 Contributions
Jonathan Hotz '94
Jonathan H Lay '99
Andrew S Pawlak '97
Mark E VanZandt '99

**OMICRON BETA
WILLIAM PATERSON
UNIVERSITY**

\$50
2 Contributions
Fabio Adduci '93
Nicholas S Consiglio '03

**PI BETA
STOCKTON STATE
COLLEGE**

\$15
1 Contribution
James F Flores '94

**TAU BETA
EAST TENNESSEE STATE
UNIVERSITY**

\$150
1 Contribution
Michael W Rogers '94

**UPSILON BETA
CLEMSON UNIVERSITY**

\$100
1 Contribution
D Wil Plyler, Jr '99

**PHI BETA
COLLEGE OF WILLIAM
AND MARY**

\$70
2 Contributions
Douglas C Piker '03
Gilbert G Via IV '04

**PSI BETA
EAST STROUDSBURG
UNIVERSITY**

\$40
1 Contribution
Jared L Campbell

**ALPHA GAMMA
UNIVERSITY OF DETROIT
MERCY**

\$160
4 Contributions
Bradley O Brzuchalski '02
Eric P Hermes '03
Eric J McGrath '00
Marc L Miles '05

FRIENDS OF KDR

\$2,755
34 Contributions
Dr & Mrs Richard
Albright, Jr
Mr & Mrs Richard S
Bickham
Mrs Shirley A Bonaddio
Mrs F Joyce Bryant
Mr & Mrs Vincent R
DeFina
Mr & Mrs Anthony Denier
Mr & Mrs Christopher G
Donathan
Mrs Debbie Fife
Mr & Mrs Carmen P Freda
Mr & Mrs Charles G
Gaines
Mr Stanley Gallinger
Mr & Mrs Harry G Glenos
Miss Marie Graci
Mr & Mrs Kenneth Hemler
Mr Eric T Hornit
Mr & Mrs Alan Jank
Mr & Mrs John H Kellogg
Mr & Mrs Herbert McLean
Mr & Mrs Gregory
Mitchell
Drs Nick & Cheryl Morell
Mr & Mrs David M Moyer
Mr & Mrs Frank A Porto
Mr & Mrs Joseph F
Quidone
Mr & Mrs Gustave J
Saettele IV
Mr & Mrs Bruce J Stuckel
Mr & Mrs Robert A
Sweede
Mr Kevin Trumpower
Mr & Mrs Victor Ugolyn
Mr T VonRickenbach
Mrs Linda Weigl
Mr & Mrs Lee A Weir
Mr & Mrs Robert D
Westerfer
Mr & Mrs Carl H
Zimmerman



Announcement for Changes to our National Constitution

Pursuant to **Article XVII, Section 1** of the Constitution of The National Fraternity of Kappa Delta Rho, this serves as notice and an announcement of a proposed constitutional amendment that will be brought to a vote at the 2004 National Convention. All proposed amendments must be either submitted to the Board of Directors, chapters, alumni corporations, and alumni associations no later than April 1st prior to convention, or have been published in the fraternity magazine at least thirty days prior to the convention.

The three sets of changes being voted upon relate to term limits of members serving on our National Board of Directors (found in **Article X, The Directors**), office length of service and presidential term limits (found in **Article XI, Officers**), and also allowing KRD to use our national website (www.kdr.com) to be an official medium for announcement of proposed constitutional amendments (found in **Article XVII, Amendments**).

The new changes to **ARTICLE X** are as follows:

ARTICLE X

The Directors

SECTION 1. There shall be a board of fifteen directors who shall manage the business affairs of the Fraternity in the interim between conventions. In addition, the Board of Directors may, in its discretion, enact a resolution expanding the number of directors to sixteen. The Board of Directors shall be responsible to, and report to the convention.

SECTION 2. The Board of Directors may, in its discretion and pursuant to Section 1, appoint or remove the Executive Vice President as the sixteenth director.

SECTION 3. Honorary, alumni, and undergraduate members in good standing shall be eligible for election as directors of the fraternity. Three director seats shall be filled by undergraduate members, and the remaining director seats shall be filled by honorary and alumni members.

SECTION 4. Term Length – Except for the three undergraduate directors, directors elected by the convention shall have terms of four years duration. The three undergraduate directors shall have terms of two years duration.

SECTION 5. Term Limits - Directors elected by the convention shall be eligible to serve three consecutive terms. These directors must be absent from the board for two consecutive years before being again eligible for election as a director. Service as a two-year undergraduate director and service commencing prior to the 2004 convention shall not be counted for the purpose of determining the limitation of consecutive terms for directors.

SECTION 6. In the event of a vacancy of any board seat, the Board of Directors may elect a member to serve the unexpired term. This unexpired term shall not be counted for the purpose of determining the limitation of consecutive terms for the individual who is elected. The Board of Directors may hold a special meeting for the purpose of filling vacated director positions.

SECTION 7. Timing of elections – Six of the four-year directors and the three two-year undergraduate directors will be elected at each even numbered year convention.

SECTION 8. Ten days notice of annual or special meetings shall be given by telegraph, telephone, mail, e-mail, or in person, but such ten days notice may be dispensed with upon unanimous consent and waiver by all the directors.

SECTION 9. Eight directors shall constitute a quorum.

SECTION 10. No director, other than the Executive Vice-President, shall receive directly or indirectly any salary, compensation, or emolument from the Fraternity, either as a director or in any other capacity unless authorized by the By-laws or by the concurring vote of two-thirds of all the directors.

SECTION 11. In the event that a director fails to attend two consecutive Board of Directors meetings without satisfactory reason and advance notification to the President, he shall be deemed to have tendered his resignation and will, therefore, be replaced in accordance with the procedures in Section 6.

SECTION 12. In recognition of long and outstanding service, and upon recommendation of the Board of Directors, the annual convention may elect a member to a position of Director Emeritus. This entitles the member to the position of an advisor with no voting privileges.

SECTION 13. One of the honorary or alumni directors, elected at the convention in 2004, will be elected for a two-year term.

The new changes to **ARTICLE XI** are as follows:

ARTICLE XI

Officers

SECTION 1. The officers of the Fraternity shall be elected by the Board of Directors and shall be the President, the Vice President of Standards and Risk Management, the Vice President for Finance and Administration, the Vice President for Education, the Treasurer and the Secretary. These six officers shall be members of the Board of Directors and shall constitute the Executive Committee.

continued on next page

National Fraternity News

SECTION 2. The Board of Directors may, in its discretion, elect one or more additional Vice Presidents, and one or more Assistant Vice Presidents, Assistant Treasurers, and Assistant Secretaries or other officers, each of which shall have duties as specified by the Board of Directors.

SECTION 3. The election of officers shall take place at the first meeting of the Board of Directors after the convention or as soon thereafter as appropriate. Officers shall serve for a term of two years, and may be reelected. If an officer serves less than a full term, The Board of Directors will elect a replacement to fill the unexpired term. This unexpired term shall not be counted for the purpose of determining officer term limits.

SECTION 4. The President shall be the presiding officer and chief executive officer of the Fraternity. The President may serve no more than two consecutive officer terms (four years). A President having served two consecutive officer terms shall not be eligible for the election to the presidency for two consecutive years. Service commencing prior to the convention 2004 shall not be counted for the purpose of determining the presidential term limit.

Renumber **SECTION 4** through **15** to be **SECTION 5** through **16**.

End of **ARTICLE XI** changes.

The new changes to **Article XVII** are as follows:

ARTICLE XVII

SECTION 1. This constitution may be amended at an annual convention or a special convention on the recommendation of the Board of Directors, or of any chapter, alumni corporation, or alumni association. The proposed amendment shall be submitted to the Board of Directors and to all chapters, alumni corporations, and alumni associations no later than April 1st prior to the convention, or have been published in the Fraternity magazine or posted on the Fraternity web site at least thirty days prior to the convention. A three-fourths vote of the delegates present shall be necessary in order to amend.

End of **ARTICLE XVII** changes.

If you would like further explanation of the amendments, contact J.R. Rees, Interim Executive Director, at the National Headquarters and he will be happy to go over the amendments in detail.

Board of Directors Applicants Wanted

The Nominating Committee is looking for candidates for the Board of Directors of the National Fraternity. There are both alumni and undergrad board seats expiring in August 2004. If you are interested in becoming a part of the leadership of our organization, E-mail Bob Swinney (Nominating Committee Chair) or J.R. Rees (Interim Executive Director) by January 31, 2004, so you can receive an application.

You can reach them at:

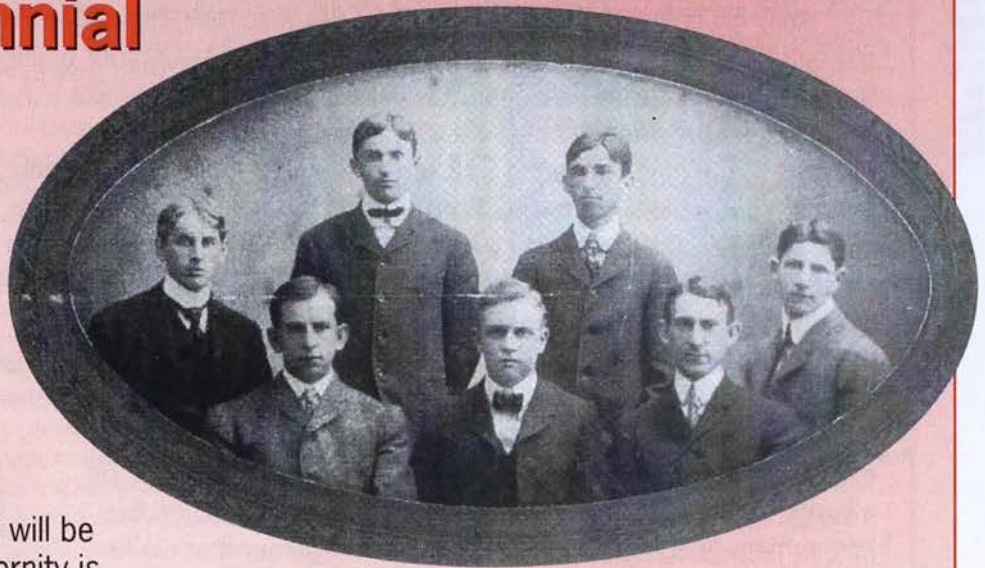
Bob Swinney
bobswinney@erols.com

J.R. Rees
jr@kdr.com

*Your 2003 Board of
Directors for the
National Fraternity of
Kappa Delta Rho*



Learn how you can make an impact at our Centennial Celebration in 2005!

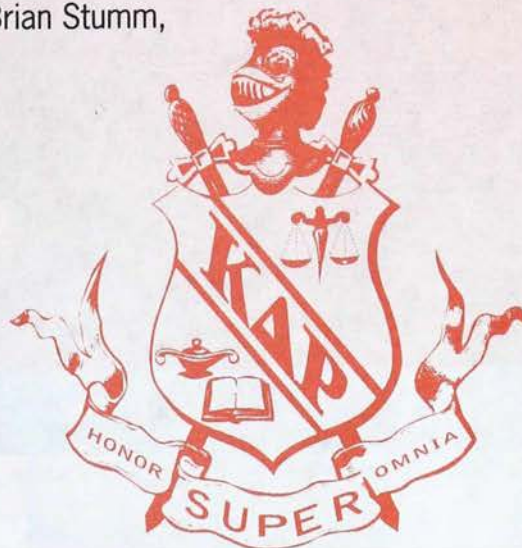


In 2005, The National Fraternity will be 100 years old! The National Fraternity is currently seeking volunteers to help make this event the greatest of all time. The committee is currently looking for people interested in:

- Planning the Alumni Events in the evenings,
- Planning family outings in the Baltimore area,
- Being alumni sponsors for events and meals,
- Volunteering to help write the "History of Kappa Delta Rho,"
- Planning a gift from the Fraternity to be given to Middlebury College,
- Providing pictures from their time in college. It doesn't matter what year, the older the picture the better!

Mark **August 3rd thru the 6th, 2005** on your calendar and celebrate the joy of being a KDR!

For more info call the National Headquarters or E-mail Brian Stumm, Centennial Chairman at kdrdoc@comcast.net.



Chapter Eternal

GAMMA

Dr. Roger W. Bancroft, '34

DELTA

Donald C. Bryden, '46

EPSILON

Rev. Robert M. Hutchings, '40
James D. Kowalski, '57

ETA

Robert N. Fryer, '40
David Amodeo, '77

IOTA

John L. Bergen, '35

NU

Daryl R. Little, '64

XI

Schuyler L. Mott, '51

RHO

William G. McLean
(Ordo Honoris), '32
Earl S. Lathorp, '37

ALPHA ALPHA

Robert C. Shevock, Jr., '59

GAMMA ALPHA

Richard A. Poterek, Honorary

Eta Alumni Announce Memorial Scholarship

Last year, many friends and brothers were shocked at the unexpected death of Thomas P. Burns, Eta '74. Tom and his brothers were well known for many years at Eta Chapter and have been strong supporters of both the Kappa Delta Rho Foundation and Eta Chapter over the years.

After his untimely death at the age of 51, a scholarship endowment was created in the fall of 2002, through the Kappa Delta Rho Foundation, to benefit Eta Chapter undergraduates in Tom's memory. Dave Rathgeb, Eta '74, Tom Skafidas, Eta '74, and Mark Paradies, Eta '77, stepped up to contact everyone to help support the project.

Pledges to the fund exceeded \$12,000 in the first month, and to date, nearly \$20,000 has been pledged toward a permanent endowment for the scholarship. The group hopes to increase the endowment to at least \$30,000, thus providing a stipend of \$1,000-\$1,500 annually to a deserving young KDR. If you are an Eta Chapter alumnus and are interested in donating to the Thomas P. Burns Memorial Scholarship, with a tax-deductible donation, contact the KDR Foundation office.

According to Tom McComb, Nu '59, President of the KDR Foundation, "We're very pleased that the Foundation could assist these Eta Chapter brothers in creating a permanent memorial and recognition for their chapter friend and brother. The Burns scholarship will benefit an undergraduate member of Eta Chapter each year and be a living memorial to Tom Burns' memory. It's opportunities like this, to help good kids and remember lost brothers that make me so proud to be involved with the Foundation. We didn't have a Foundation in my days as an undergraduate, and I'm darn glad we do today."

If your chapter is interested in developing a scholarship to assist fellow KDR undergraduates, contact the KDR Foundation office. The Foundation is eager to work with you to create an endowment to help our brothers in school. You can reach the office at (800) 536-5371 ext. 15, or by E-mail at foundation@kdr.com



Pictured in front, left to right: Foundation President Tom McComb (Nu '59), Bill Paris (Eta '87), winner Jake DiCiaula (Eta 2005). Back: Dave Rathgeb (Eta '73) and Dan Burns (Eta '74).

Legacy

Fraternity brothers, young and old, rally to establish a scholarship to honor Gary Wayne Brannon, otherwise known as Zeta Beta #7.

By Ben Tinsley,
Zeta Beta #32, 1991
Alpha Pledge Class



Ben Tinsley

Gary Wayne Brannon never thought of himself as a gentleman. But, the founding member of the Zeta Beta Chapter at Tarleton State University set the standard by which his fraternity brothers measure themselves to this day.

"There was nothing phony about Gary," said John Hughes of Granbury, TX, a fellow Zeta Beta founder and founder of its alumni corporation. "He didn't make a big deal out of it, but he did all the little things like opening doors for women, helping people out, and being there for his friends."

The 21-year-old's death in a tragic automobile accident south of Ranger, TX, on May 18, 1990, nearly crippled his KDR brothers with grief.

"Gary died the night before I got married, and we were just stunned – all of us, just stunned," said Hughes.

But Gary's spirit lives on in the chapter he helped establish. The KDR Gentleman's Award, for example, was named after him posthumously. The Zeta Beta Chapter brothers have also started to gather funds for a special scholarship in Gary's name. Specifics have yet to be ironed out.

Gary's tragic accident and the current efforts to establish a scholarship in his name are reminiscent of the death of another beloved Zeta Beta brother, Jacob (Jake) Bentley Sandlin, Zeta Beta #97, who died of a self-inflicted gunshot wound to the head on April 25, 1997. The chapter brothers decided to establish an educational scholarship in his name, according to Patrick McCarty, Zeta Beta '03.

"Jake was a gentleman, too," McCarty said. "Both of these individuals were great losses in the sense of their values and morals."

After Jake died, his brothers thought up the idea of a memorial scholarship endowed by the college. Between 1997 and 2002, KDR brothers and Jake's family accumulated the \$5,000 needed to endow the scholarship.

Once again, the current membership

of Zeta Beta has turned its sights toward honoring the past. A similar scholarship is in the process of being established for Brannon. The target goal for endowment by the college is \$5,000.

"This scholarship is really hitting home with our older alumni," McCarty said.

McCarty said he understands the trauma a fraternity brother's death can bring.

"There are still individuals who get teary-eyed when they talk about Jake Sandlin today," the president said. "Even during special business a lot of us still end in honor of Zeta Beta 97."

Brannon's family members, who continue to live in Quitaque, in the southeast part of the Texas Panhandle, say they appreciate the efforts on his behalf.

"It's wonderful," Peggy Brannon said of the proposed scholarship during a recent telephone interview. "Gary's sister and I both are really pleased."

Ben Tinsley, 36, a 1991 graduate of Tarleton State University in Stephenville, TX, is the founding editor of KDR Jazz. He works as a crime reporter for The Fort Worth Star-Telegram in Fort Worth, TX. You may contact him at (817) 685-3821 or by E-mail at btinsley@star-telegram.com.

The Mighty "O" – New Omega Chapter Alumni Corporation is Going Great!

This past October more than 40 members of the Omega Alumni Corporation came back home for Indiana University of Pennsylvania's Homecoming. The group had entertainment from a band made up of local chapter brothers, and fantastic food provided by an executive chief. Alumni Corporation President Craig Coppaway, along with many other dedicated Omega Chapter alumni, have worked very hard this past year to revive the alumni group, and plans are already underway for a local area alumni event in the Pittsburgh area.

Members of the newly formed Omega Alumni Corporation take time to pose for a picture during Homecoming.



CHAPTER NEWS

Beta Chapter – Cornell University

Our Beta Chapter hosted its 90th Anniversary this fall. Congratulations to members of Beta for 90 years of hard work and dedication, your chapter has seen many changes throughout the years, and through it all your members are just as strong and loyal as they were almost a century ago. Thanks for bleeding Blue & Orange!

Epsilon Chapter – Franklin College

Epsilon Chapter has had a successful year, doubling the size of the chapter since this time last year. Recently, the chapter had a number of lighting, heating, and plumbing renovations in the chapter house, thanks to the generosity of their alumni. Almost \$4,500 was raised for the effort. Way to go guys!

Nu Chapter – Indiana University

KDR Takes Second Place At 2003 IU Sing
A wonderful, crowd-pleasing performance was the result of months of effort by KDR, Delta Upsilon and Alpha Phi. In the end it was rewarded by a Second Place Trophy in the A Division (65 cast members or more).

Starting about November, song leaders met to begin planning their individual acts for the competition. Nu Chapter worked with the song leaders from its pairs, DU, and Alpha Phi. As their script came together, they began to practice with the cast members.

Meeting at DU almost every weeknight for six weeks, Nu's members showed dedication to performing as best as they could. In the end, all the hard work and planning paid off. The high quality of the show and the appreciation of the audience made all the hard work seem worthwhile.

Rho Chapter – Lafayette College

Congratulations to Rho Chapter as they celebrated their 75th Anniversary during Homecoming this fall. Rho has always had a strong chapter where her members tend to stay involved after they graduate on all levels of the National Fraternity, the Kappa Delta Rho Foundation, and on her local Alumni Board. Happy 75th, and may you continue to be healthy and strong for another 75 years!

Psi Chapter – Lycoming College

Happy 50th Anniversary to the members of the Psi Chapter. The event was celebrated at Homecoming this fall. The chapter has already had more than 30 original chapter founders RSVP for the event! Congratulations from all us at the National Headquarters. Your dedication to KDR does not go unnoticed!

Epsilon Beta Chapter – Old Dominion University

The Old Dominion University baseball team had its home opener this past spring 2003. Along with the Student Activities Council, the Epsilon Beta Chapter co-sponsored an Opening Day Barbeque Bash. There were tons of food, and the campus radio station was out providing music. The weather was great, although it got cold during the game, and we ended up beating Rutgers 5-1. Attendance was great: all the brothers were present along with our five pledges, plus 10 rushees. If all goes well they will try this again next spring!

Omicron Beta Chapter – William Paterson University

Omicron Beta Chapter is on the rebound! This past year the chapter has moved into a new house, its first in several years, although

nity at William Paterson can be.

Alpha Gamma Chapter – University of Detroit Mercy

This past year, Alpha Gamma went through its own version of "changing of the guards" as the last of the founding members graduated from

projects on their houses, and just the weekly hanging out at the house, this fraternity will not miss a beat as the founders leave the remaining members and new members will work hard to keep Alpha Gamma Chapter where it is today.

Zeta Beta Chapter-Tarleton State University

*This poem was sent in by one of our undergraduates,
Jonathan Perser, ZB #217.*

From the might of those that have gone before,
We have been fashioned
Our time to join them is nigh
If lessons learned before are implemented now,
We can never fail
Our loyalties run deep, but our bonds run deeper
For I will always be proud to say
"I am my brothers keeper."

the chapter was challenged by having only six returning active members a year ago. Since then, the chapter has more than doubled its membership, and will try to repeat that this year. With a new pledge program and fundraising efforts, the chapter is looking forward to continuing its success. Brothers are on Student Senate and at the head of IFC, and have the highest GPA of any Greek organization on campus. Other fraternities on campus are looking to KDR as a model of what a frater-

the University of Detroit Mercy at the end of the 2003 spring semester. Although they parted ways with many members that had contributed a lot to this chapter, they did not miss a beat. There will be a continuing of all the great events that have made Alpha Gamma what it is today. The chapter brought home several awards from the National Convention this past summer. With many events to participate in such as events with sororities, helping friends and family with personal

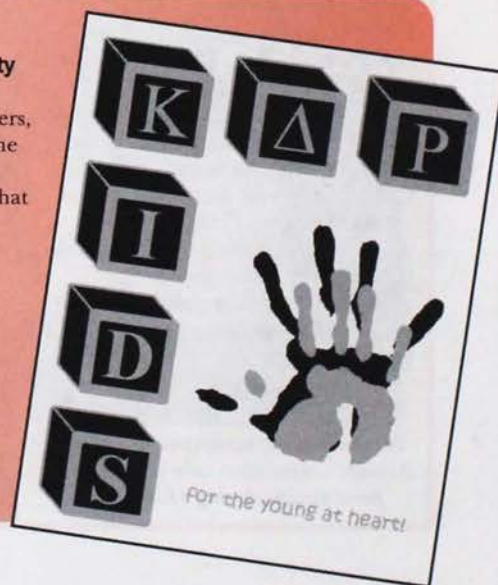
WHERE'S MY CHAPTER? We can only publish what we've been given! **Propraetors, be sure to send us periodic chapter reports so we can let the fraternity know all the good things that are going on in your chapter.**



Tau Chapter – Carnegie Mellon University

This fall Tau Chapter held their annual philanthropy event, Quarter Mile of Quarters, which raised several thousand dollars for the Pittsburgh Children's Hospital. The event turned out to be a huge success, so much that the university even added funds to help sponsor other campus events that would help draw people over to our event.

Members and friends of Tau Chapter at Carnegie Mellon University pose for a photo during their annual "Quarter Mile of Quarters" event.



National Directory

KAPPA DELTA RHO FRATERNITY

BOARD OF DIRECTORS

(Parentheses indicate the year this seat comes up for election)

President (2006)
Joshua L. Smith,
Alpha Beta '93

Interim Executive Director
Joseph E. Rees, Nu '01

Vice President/Standards and Risk Management (2006)
Richard O. Jones, Nu '64

Vice President/Finance and Administration (2004)
John V. Dempsey, Jr.,
Upsilon Alpha '90

Vice President/Education (2004)
Lansing Dimon, Mu Beta '94

Vice President/Alumni Affairs (2006)
Christopher K. Gordon,
Zeta Beta '95

Secretary (2004)
Gerald L. Murray, Theta '66

Treasurer (2004)
Edward B. Curtis, Rho '62

Director/Insurance Programs (2006)
Scott Smariotto, Alpha Beta '93

Directors (2004)
Robert L. Swinney, Sigma '58
Mark N. Lundgren, Nu '70
Roy Crowe, Psi '80
Patrick McCarty, Zeta Beta '03
Michael Hudson, Mu Beta,
Undergrad
Kenny Hemler, Alpha Gamma,
Undergrad

Directors (2006)
Brian J. Stumm, Iota Beta '92

Directors Emeritus
Robert D. Corrie, Beta '53
James F. Edgeworth, Sr., Psi '56
Robert D. Lynd, Iota '67

COMMITTEES

Alumni Affairs Committee
Christopher K. Gordon,
Zeta Beta '95 - Chair
J.R. Rees, Nu '01
Brian J. Stumm, Iota Beta '92
Benjamin K. Willis,
Zeta Beta '99
Roy Crowe, Psi '80
Kenny Hemler, Alpha Gamma
Undergrad

Finance Committee

Edward B. Curtis,
Rho '62 - Chair
John V. Dempsey, Jr.,
Upsilon Alpha '90
Benjamin K. Willis,
Zeta Beta '99
Brian J. Stumm, Iota Beta '92
Scott M. Smariotto,
Alpha Beta '93
Joshua L. Smith,
Alpha Beta '93
Jerry Murray, Theta '66

Website Committee

Michael T. Jesse,
Iota Beta '96 - Chair
Benjamin K. Willis,
Zeta Beta '99
JR Rees, Nu '01
John V. Dempsey, Jr.,
Upsilon Alpha '90
Nik Bonaddio, Tau Undergrad

Nominating Committee

Robert L. Swinney,
Sigma '58 - Chair
Benjamin K. Willis,
Zeta Beta '99
Gerald L. Murray, Theta '66
Joseph C. Duggan,
Upsilon Alpha '93

Expansion Committee

Mark N. Lundgren,
Nu '70 - Chair
Benjamin K. Willis,
Zeta Beta '99
Gerald L. Murray, Theta '66
Mike Natale, Tau '00
Patrick McCarty, Zeta Beta '03
Kenny Hemler, Alpha Gamma,
Undergrad

Philanthropy Committee

Robert L. Swinney,
Sigma '58 - Chair
Douglas M. Rammel,
Pi Alpha '90
J.R. Rees, Nu '01

Education Committee

Lansing Dimon,
Mu Beta '94 - Chair
Mark N. Lundgren, Nu '70
Benjamin K. Willis,
Zeta Beta '99
J.R. Rees, Nu '01
Shawn Hoke, Phi Alpha '95
Jon Kapell, Eta Beta '95
Roy Crowe, Psi '80
Jorge A. Zapata, Zeta Beta '99

Centennial Committee

Brian J. Stumm,
Iota Beta '92 - Chair
Benjamin K. Willis,
Zeta Beta '99
Christopher K. Gordon,
Zeta Beta '99
Douglas M. Rammel,
Pi Alpha '90
Mark S. West, Upsilon Alpha '88
James H. Buterbaugh, Zeta '55
Glen Jarrett, Alpha '70
J.R. Rees, Nu '00
Jerry Stebbins, Phi Alpha '88
Gerald L. Murray, Theta '66
Lansing Dimon, Mu Beta '94
Mike Natale, Tau '00

Ordo Honoris Committee

Robert D. Corrie,
Beta '53 - Chair
Paul A. Downes, Gamma '69
John Irving, Sigma '63
Douglas M. Rammel,
Pi Alpha '90

Convention Committee

J.R. Rees, Nu '01 - Chair
Benjamin K. Willis,
Zeta Beta '99
Edward B. Curtis, Rho '62
Christopher K. Gordon,
Zeta Beta '95
Jerry Stebbins, Phi Alpha '88

Chapter Awards Committee

JR Rees, Nu '01 - Coordinator
Scott Chesky, Iota '94
Frank Hattula, Nu '94
Vernon Hurd, Pi Alpha '97
Rafael Isaac, Iota Beta '91
Jon Kapell, Eta Beta '95
Brian Leckrone, Epsilon '86
Eric Mitchelltree,
Alpha Alpha '90
Pete Tartaro, Lambda Beta '00
Corey Waltz, Tau Alpha '96

KAPPA DELTA RHO FOUNDATION, INC.

BOARD OF DIRECTORS

President (2004)
Thomas V. McComb, Nu '59

VP Investments/Secretary (2006)
Michael E. Mueller, Eta '95

VP General Fund (2006)
Douglas M. Rammel,
Pi Alpha '90

Secretary (2005)
Paul A. Downes, Gamma '68

Treasurer (2005)
Robert D. Corrie, Beta '53

Director of Development
William J. Paris, Eta '87

Trustees (2004)
James H. Buterbaugh, Zeta '55
Thomas C. Lockwood, Nu '56

Trustees (2005)
Andrew F. Barth, Nu Alpha '83
David R. Hamrick, Zeta '57
J. Hall Jones, Jr.,
Lambda Beta '91

Trustees (2006)
Douglas A. Cifu, Nu Alpha '87
Howard A. Fidler, Eta Beta '92
Bimal N. Saraiya, Theta '00

Emeritus Trustee
Ray C. Hunt, Jr., Rho '53

Investment Committee
Michael E. Mueller,
Eta '95 - Chair
Andrew F. Barth, Nu Alpha '83
Robert D. Corrie, Beta '53
Delano Newkirk, Nu '61
Robert P. Youngman, Alpha '64

General Fund Committee

Douglas M. Rammel,
Pi Alpha '90 - Chair
James H. Buterbaugh, Zeta '55
Douglas A. Cifu, Nu Alpha '87
Howard A. Fidler, Eta Beta '92

Paul A. Downes, Gamma '68
Bimal N. Saraiya, Theta '00
Melvin F. Erman, Nu '58

Scholarship Committee

Dr. Alan T. Lord,
Kappa '72 - Chair
Dr. Thomas L. Guthrie, Theta '62
James H. Buterbaugh, Zeta '55
David Z. Richards, Zeta '57

Law Scholarship

Paul W. Upson, Alpha '66

CHAPTERS

Kappa Delta Rho Society

Alpha Chapter

Middlebury College

Kappa Delta Rho Fraternity

Alpha (inactive)
Middlebury College

Beta

Cornell University

Gamma (inactive)

University at Albany (S.U.N.Y.)

Delta

Colgate University

Epsilon

Franklin College

Zeta

Penn State University

Eta

University of Illinois

Theta

Purdue University

Iota

Bucknell University

Kappa (inactive)

Ohio State University

Lambda

University of California - Berkeley

Mu (inactive)

University of Michigan

Nu

Indiana University

Xi (inactive)

Colby College

Omicron (inactive)

Butler University

Pi (inactive)

Gettysburg College

Rho

Lafayette College

Sigma (inactive)

Oregon State University

Tau

Carnegie Mellon University

Upsilon (inactive)

Fresno State University

Phi (inactive)
University of Oklahoma

Chi Colony (inactive)
University of Florida

Psi
Lycoming College

Omega
Indiana University of Pennsylvania

Alpha Alpha
Lock Haven University

Beta Alpha (inactive)
C.W. Post College

Gamma Alpha (inactive)
Bradley University

Delta Alpha (inactive)
Rhode Island College

Epsilon Alpha (inactive)
Lewis University

Zeta Alpha (inactive)
University of Dayton

Eta Alpha
Robert Morris University

Theta Alpha
Slippery Rock University

Iota Alpha
University of Pittsburgh/Johnstown

Kappa Alpha (inactive)
Illinois State University

Lambda Alpha (inactive)
Gannon University

Mu Alpha (Group of intent)
West Virginia University

Nu Alpha
Columbia University

Xi Alpha (inactive)
Temple University

Omicron Alpha (inactive)
Rutgers University

Pi Alpha
University of Toledo

Rho Alpha (inactive)
Bryant College

Sigma Alpha (inactive)
Hofstra University

Tau Alpha
Radford University

Upsilon Alpha
St. Louis University

Phi Alpha
Clarion University

Chi Alpha (inactive)
University of Pittsburgh/Greensburg

Psi Alpha (suspended)
Penn State Behrend College

Omega Alpha (inactive)
Virginia Commonwealth University

Alpha Beta
University of Delaware

Beta Beta (inactive)
Ball State University

Gamma Beta (inactive)
Virginia Tech

Delta Beta (inactive)
West Liberty University

Epsilon Beta
Old Dominion University

Zeta Beta
Tarleton State University

Eta Beta
West Chester University

Theta Beta (inactive)
NY Institute of Technology

Iota Beta
Rochester Institute of Technology

Kappa Beta
Edinboro University

Lambda Beta
James Madison University

Mu Beta
Syracuse University

Nu Beta (inactive)
Fordham University

Xi Beta (inactive)
University of Pittsburgh

Omicron Beta
William Paterson University

Pi Beta (Group of intent)
Richard Stockton College

Rho Beta (inactive)
Eastern Illinois University

Sigma Beta
University of North Carolina/Greensboro

Tau Beta (inactive)
East Tennessee State University

Upsilon Beta
Clemson University

Phi Beta
The College of William and Mary

Chi Beta
University of Charleston

Psi Beta
East Stroudsburg University

Omega Beta
University of North Carolina/Asheville

Alpha Gamma
University of Detroit/Mercy

Groups of Intent
Christopher Newport University

Millersville University

ATTENTION PARENTS

Does your student have a new address? Please help us stay up to date. Send, fax, or e-mail any new information so that no fraternity event happens without his knowledge.

Name of Brother

New Address

School and Year of Graduation

Old Address

Telephone

Email

Please send responses to:

Kappa Delta Rho, Inc.
331 South Main Street • Greensburg, PA 15601
Fax Number: 724.838.7101
Email: kdr@kdr.com

Here We Grow Again!

The National Fraternity is pleased to report that once again we have the resources and manpower to focus on expanding our organization, and those efforts have already borne fruit. At the 2003 National Convention the Board of Directors added two new Groups of Intent.

Our first group is at Millersville University, located in Eastern PA. Brother Jeremiah Boring, from our Omega chapter, transferred there last year and worked with a local group on campus to bring them into the KDR family. You can E-mail Jeremiah at kiltedguard@yahoo.com.

Our second group is located at Christopher Newport University located in Newport News, VA. The members of this group have already visited several of our southern chapters and are excited to get things moving towards becoming a Provisional Chapter for the Fraternity. You can E-mail the group's President, Greg Hawkins, at ghawkins@cnu.edu.

I urge each of you to contact these groups and welcome them to our order. I also suggest that you give any ideas or suggestions to these guys as they strive to become a fully chartered chapter!

More Expansion News

Through the Expansion Committee and National Headquarters Staff, the Board of Directors is in contact with other groups and individuals that are seeking more information about opening new chapters of KDR. Interested groups in Virginia, Oregon, Pennsylvania, New York and Texas may be added to the KDR fold in the upcoming year. Stay tuned for more information!

You can help! The National Fraternity is always looking for groups of men that have what it takes to start a new chapter of KDR. It can even start with one dedicated individual. If you know of anyone who may be interested in becoming a chapter's founding father, please forward their contact information to Expansion Chairman Mark Lundgren at lundgren@dvol.com or Expansion Coordinator Mike Natale at mike@kdr.com.

Make an Impact in the Fraternity everyday!

Have you just graduated, or are about to?
Do you know where you'll be working when you do? Work for the National Fraternity as a Programming Coordinator and make a difference in Kappa Delta Rho. Part of building the fraternity is hiring strong people to work with each chapter on an individual basis. Do you have what it takes to help build our fraternity? If you will be graduating on or before August 2004 please call me or E-mail a resume and cover letter to:

Joseph E. Rees II,
Interim Executive Director
1-800-536-5371 ext 12
jr@kdr.com



Kappa Delta Rho, Inc.
National Office
331 South Main Street
Greensburg, PA 15601

Address Service Requested

NONPROFIT ORG
US POSTAGE
PAID
GREENSBURG PA
PERMIT NO. 653