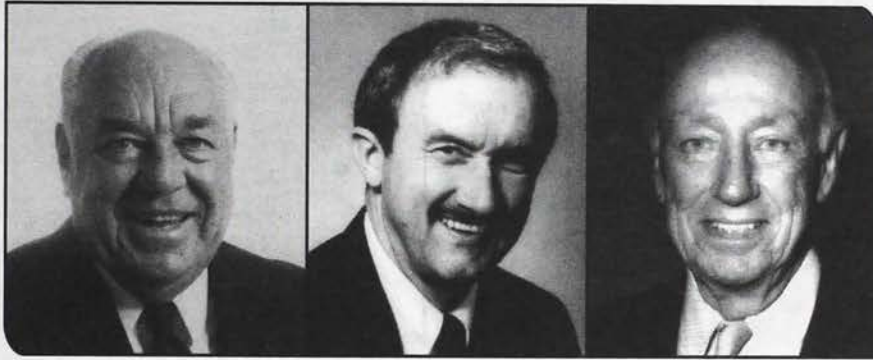


Quill & Scroll

FALL 1996

THE MAGAZINE OF KAPPA DELTA RHO



Lifetime Brotherhood

*"To thy
happy
children of the future,
those of the past
send greetings."*

INSCRIBED ON BASE OF THE ALMA MATER
AT UNIVERSITY OF ILLINOIS

Also Inside: **Record Year for the Foundation •**
Stock Gifts Keep Giving • Brotherhood Contributions

Letter From the President and Executive Director

Record year for the Foundation creates stronger fraternity

On June 30th, the National Fraternity concluded a very successful year. I am pleased to report that we ended the year with a positive net worth for the first time in over five years. In addition, the Kappa Delta Rho Foundation ended a record year (see article on page 6) with overall giving up 65%, unrestricted giving up 22%, and restricted giving up 365%.

The success of the fraternity and foundation is permitting the fraternity to add much needed leadership consultants and chapter services programs this fall. For several years, the fraternity has operated without the proper number of consultants in order to address our financial concerns. We now feel comfortable adding two individuals to work with the chapters.

The addition of staff comes at an important time for our fraternity. There continues to be a negative sentiment against greek organizations. Our young members are working to reverse this opinion. Each year they perform thousands of hours of community service work and raise nearly \$100,000 for charity. We can all be proud of their accomplishments!

The sentiment in the Greek system continues to challenge our efforts at recruitment. Despite our strong financial results, recruitment and initiation figures were down by 14% and 8%, respectively, last year. The National Fraternity is responding to this issue with the addition of staff and a strengthened recruitment incentive program.

You can help. As a dedicated alumnus, you can help respond to the recruitment recession by using the attached form to submit any information about friends, relatives, or any other contacts who may be interested in the fraternal experience.

The trends in the Greek world suggest a new environment in our future. Many fraternities are actively developing "substance-free" living arrangements. This means no alcohol in the fraternity house! In addition, many campuses are looking to defer rush to the second semester of the freshman year or even as late as the sophomore year. Many of these same universities are now seeking to raise their academic requirements for participation in the Greek system. We continue to monitor these developments and respond where appropriate.

The board of directors for the fraternity appointed an active task force to reach a proposed resolution to the issue involving our Alpha Chapter at Middlebury College. Several alumni of the fraternity are helping to work in this area.

The National Long Range Planning Task Force met twice during the past year and continues work on what will eventually lead to the presentation of a one-year, five-year, and ten-year program for the fraternity.

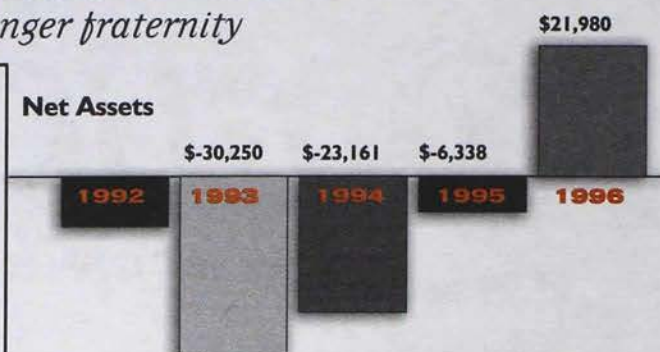
In closing, we all need to be aware of the vital changes occurring within KDR and the Greek system as a whole. As the universities change their posture, so too must KDR be prepared to change. As an alumnus, I encourage you to become involved. The undergraduate members need our guidance. They need your support. We cannot assume they will always be there for us.

Fraternally,

James F. Edgeworth, Sr. (Psi '56)
President

William J. Paris (Eta '87)
Executive Director

Net Assets



Revenues



CONSOLIDATED FINANCIAL REPORTS

NATIONAL FRATERNITY OF KAPPA DELTA RHO

Statement of Activities Year Ending June 30, 1996

	1996	1995	1994	1993
Income:	464,964	450,838	351,449	370,015
Expenses:				
Personnel	138,040	132,277	113,795	124,246
Office	102,960	60,692	55,411	54,247
Activities	195,646	188,907	175,277	214,433
TOTAL EXP.	436,646	381,876	344,483	392,926
Operating Inc./loss	28,318	68,962	15,132	(22,911)
Special Fund Activity	0	0	8,166	6,181
Total Inc./loss	28,318	68,962	15,132	(16,730)
Adjustments/trans	0	(52,139)	(8,043)	5,000
Net Assets	(6,338)	(23,161)	(30,250)	(8,520)
NET ASSETS:	21,980	(6,338)	(23,161)	(30,250)

II. Statement of Financial Position

ASSETS:				
Current	180,661	163,033	148,193	109,946
Fixed	12,430	8,424	12,651	4,343
Total Assets	193,091	171,457	160,844	114,289
Total Liabilities	171,111	177,795	184,005	144,539
Total Net Assets	21,980	(6,338)	(23,161)	(30,250)

TOTAL LIABILITIES

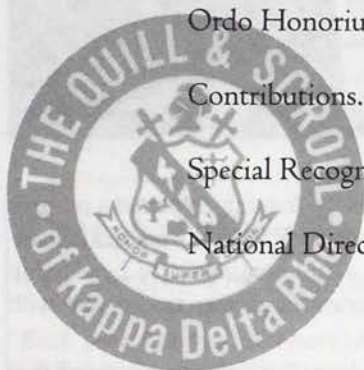
& NET ASSETS	193,091	171,457	160,844	114,289
-------------------------	----------------	----------------	----------------	----------------

A copy of the audited financial statements is available free of charge by directing your request in writing to: William J. Paris, Executive Director National Fraternity of Kappa Delta Rho, Inc. 331 S. Main St. Greensburg, PA 15601

Quill & Scroll

Contents

Convention Highlights	2
National News	3
Fond Farewells.....	4
Chapter Eternal	5
Foundation News.....	6
Ordo Honorium.....	8
Contributions.....	9
Special Recognition Clubs.....	9
National Directory	13



Quill and Scroll (USPS 605-402), an educational journal, is published two times a year by Kappa Delta Rho, Inc., 331 South Main Street, Greensburg, PA 15601. Forward all correspondence, manuscripts, and changes to the National headquarters.



DESIGN • Adam Logan Fulrath • OMICRON ALPHA '94 EDITOR • William J. Paris • ETA '87

MANAGING EDITOR Paul A. Downes, GAMMA '68

CONTRIBUTING EDITORS Carole Otypka • David Gaffen, Omicron Alpha '95

National Headquarters Adds Staff

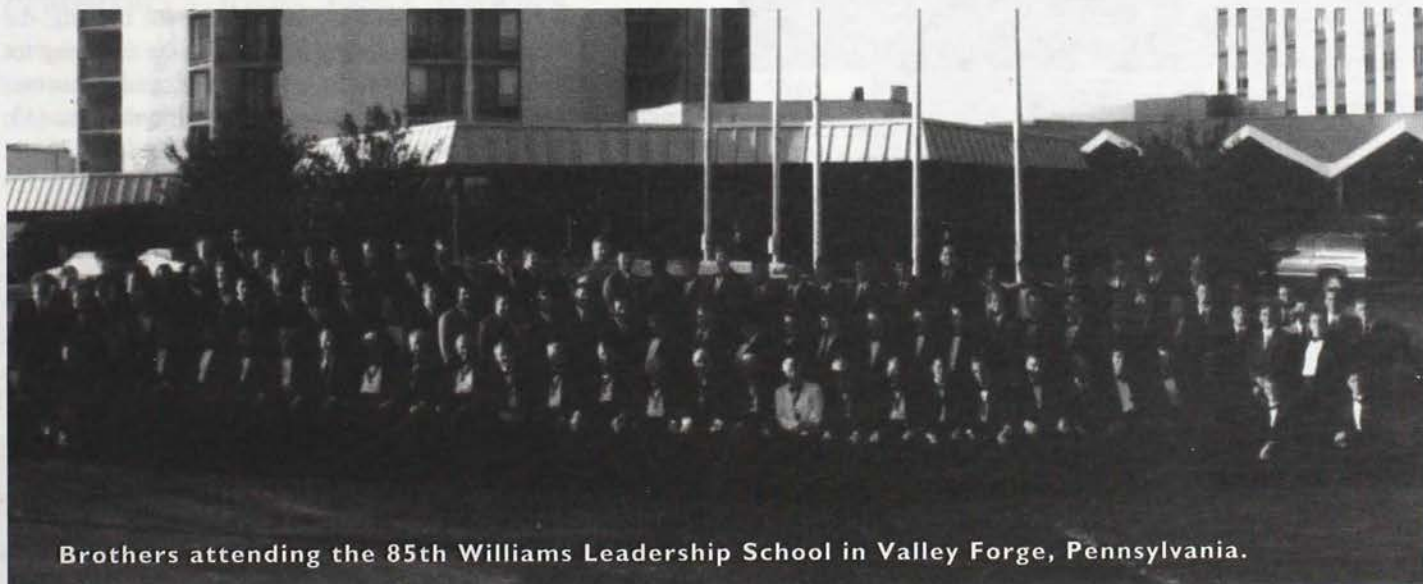
The National Fraternity is pleased to welcome two new traveling consultants this fall. Doug Vogel, a graduate of our Tau Alpha Chapter at Radford University, is the consultant responsible for chapters in Eastern Pennsylvania, Central New York, and the Midwest. Josh Champion, a graduate of the University of Arizona in Tucson, who was a member of our Pi Alpha Chapter at the University of Toledo, is responsible for the East coast and Southeast chapters.

Doug and Josh will each be responsible for twenty-four chapters. Along with the Director of Chapter Services, their role is to ensure that each chapter is visited and provided with necessary support. In addition, Doug and Josh will work on expansion and recolonization efforts.

The National Office is pleased to welcome these outstanding young men to our staff. We look forward to a successful year.



LEFT TO RIGHT Consultants Doug Vogel (Tau Alpha '96) and Josh Champion (Pi Alpha '96)



Brothers attending the 85th Williams Leadership School in Valley Forge, Pennsylvania.

Convention Highlights

This year marked the 85th Williams Leadership School which was well attended by both chapter and alumni delegates. An outstanding array of speakers presented issues critical to the development of both delegates and chapters. Once again, the Leadership School gave the delegates an opportunity to meet and discuss the issues confronting their individual chapters, as well as to develop ties with other fraternity members.

Gerry Stebbins, assistant dean of students at Washington and Jefferson College and a graduate of Phi Alpha Chapter at Clarion University spoke on developing and properly using credit. Gerry conducted a mock BYOB event to illustrate the fine points of Risk Management.

Dr. Jerry Belloit, a professor of Finance at Clarion University and an honorary member of Phi Alpha Chapter worked with the delegates on chapter financial management.

Chuck Loring, past president of the National Interfraternity Conference and past executive director of the Phi Sigma Kappa Foundation spoke about motivation, recruitment, fundraising, and house management for alumni corporations.

Dan Horn of the Philadelphia Aids Task Force led a discussion on safe sexual practices and men's health related issues.

The two days of workshops wrapped up with a night out at the Phillies game, where KDR spirit and brotherhood captured the attention of television crews and commentators when the delegates formed a K-D-R in the upper stands. No one in the Philadelphia area could miss us in the crowd that night.

Saturday morning's meeting was filled with annual progress reports. A summary is contained here and throughout this issue



of the *Quill and Scroll*.

For the first time in several years the fraternity reported a positive net worth at the end of the year, and with support from the foundation will finally be able to add a full contingent of Leadership Consultants. The foundation experienced another record year with an increase in unrestricted giving.

After much discussion and debate, the delegates decided that member dues will increase to \$65 per man for the coming year, but the risk management assessment will remain at \$80 per man. Various committees presented their reports and the meeting closed with the election of new board members.

The event ended with the annual Ordo Honorium Banquet on Saturday evening. The fraternity was honored to have Mr. and Mrs. Hillary Halloway as its guests. Hillary, a member of Kappa Alpha Psi, is the president of the National Interfraternity Conference and an attorney in Philadelphia. At the conclusion of the evening, the fraternity recognized six outstanding members of the fraternity for their contributions to community, fraternity, and business. Congratulations to Mike McCarthy, Beta '57; Neil Jones, Beta '53; Bill Nichol, Zeta '59; Wes Litzinger, Zeta '73; Bob Stern, Theta '54; and Bob Kiser, Rho '74.



TOP (clockwise from top left) "Famous Sports Casters" Bob Lynd (Iota '66) and Jim Edgeworth (Psi '56); Bill Paris (on right) presents the Interfraternal Award to Chuck Loring of Phi Sigma Kappa; Ed Curtis (Rho '62) presents the Rho endowment gift.

ABOVE Delegates from Zeta Beta (Tarleton State University) displaying their awards LEFT Jim Edgeworth presents Paul Downes (Gamma '68) with the Outstanding Alumnus Award.

Convention Awards

Dr. Harold Osborn Award
Intramural Sports
Psi Alpha (Behrend College)

Donald C. Wolfe Award
Outstanding Newsletter
Beta (Cornell University)

John L. Blakely Award
Best Single Project
Rho (Lafayette College)

John L. Blakely Award
Best New Project
Eta Alpha
(Robert Morris College)

Gino A. Ratti Award
Alumni Relations
Beta (Cornell University)

Outstanding Senior Award
Eric Larsen, Eta Beta
(West Chester University)

Fraternity Expansion

UNC-Ashville

On May 4, 1996 a group of outstanding men were formally pledged as the Omega Beta Provisional Chapter of the fraternity at the University of North Carolina at Asheville. Shawn Hoke, Director of Chapter Services and Expansion for the fraternity oversaw the formal ceremony. National Board member Joe Rejuney assisted along with brothers from the Old Dominion University chapter.

Sigma-Oregon State University

The National Fraternity plans to recolonize the Sigma Chapter at Oregon State this fall. The alumni

corporation has indicated a strong interest in starting a new chapter. Shawn Hoke, along with Josh Champion, a staff consultant, will be on campus for several weeks beginning in October to conduct the recolonization.

The Sigma Chapter was closed by the alumni in the spring of 1992. No previous efforts have been made to recolonize the chapter.

SUNY Alfred

The National Fraternity has granted recognition to a local fraternity Pi Rho Zeta as a group of intent of the National Fraternity. The chapter has been in existence on the campus for ten years. As a group of intent, the chapter will work to become a provisional chapter and eventually a fully chartered chapter of the fraternity. They will be the Alpha Gamma Chapter of the Fraternity.

Psi Beta Chapter Chartered at East Stroudsburg

The fraternity chartered the Psi Beta Chapter at East Stroudsburg University on April 26th and 27th. Forty-five men were initiated on Friday evening. Executive Director Bill Paris received assistance from Shawn Hoke, Director of Expansion, National Board Member Bill Nichol, and undergraduates from Rho Chapter at Lafayette College.

In 1893, the East Stroudsburg State Normal School was built on donated land in the middle of the sprawling Pocono Mountains. From its inception, the school set out to improve the quality of teachers in the state of Pennsylvania. However, in 1920 financial difficulties forced the school to close its doors and be sold to the state of Pennsylvania.

The State made the school into a four-year teachers college and renamed it the East Stroudsburg State Teachers College in 1926. Since the school only taught teachers education, it was not given full status as a state college until 1960.

In 1960, the State granted permission for the school to transform into a comprehensive state college. In light of the new programs and degrees offered, the school name was changed to East Stroudsburg State College. Then in 1982, East Stroudsburg State College joined the Pennsylvania state system of higher education and was renamed East Stroudsburg University. Today, the university offers a wide variety of courses in the arts and sciences, while still maintaining the education programs on which it was founded.



Bill Paris and Bill Nichol (Zeta '59) join (left to right) Jason Albert, Mike Ritter, and John Pressler

Outstanding Senior Award

Eric Larson, Eta Beta Chapter (Westchester University)

Each year, the five members of the awards selection committee select the senior who best exemplifies the ideal KDR brother. Eric Larson is this year's winner. Eric has held positions in his chapter including consul, senior tribune, and member-at-large. He was active in the Interfraternity Council, holding positions such as IFC president, IFC rush director, and guest speaker at three Order of Omega Leadership Conferences. In addition to fulfilling the role of active leader, Eric was able to complete over 400 hours of community service in events including Trick-or-Treat for Unicef, Walktoberfest for Diabetes and numerous clean-ups.

Fraternity Closes Two Chapters

At the March 2 meeting of the board of directors of the fraternity, two chapters were closed for noncompliance with fraternity policy. The Omega Alpha chapter at Virginia Commonwealth University and the Sigma Alpha Chapter at Hofstra University in New York. The fraternity intends to reopen these chapters at an appropriate time in the future.

Outstanding New Member
Jeff Carroll, Epsilon
(Franklin College)

E. Mayor Maloney Award
Faculty Relations
Beta (Cornell University)

George E. Shaw Award
Public Relations
Phi Alpha (Clarion University)

Leo T. Wolford Award
Campus Involvement
Eta Beta
(West Chester University)

George E. Kimball Award
Community Involvement
Eta Beta
(West Chester University)

John L. Blakely Award
Overall Philanthropy
Eta Beta
(West Chester University)

Executive Director Award
Outstanding Rush
Pi Alpha
(University of Toledo)

Executive Director Award
Most Improved Rush
Lambda Beta
(James Madison University)

Floyd R. Baughman Award
Chapter Of Achievement
Eta Beta
(West Chester University)

O. D. Roberts Award
Most Improved Chapter
Zeta Beta
(Tarlton State University)

William I. Myers Award
Scholastic Achievement
Mu Beta (Syracuse University)

National Staff Award
Risk Management
Beta (Cornell University)

Outstanding Advisor Award
Dr. Robert Marbach
Eta Beta (West Chester University)

Executive Director Award
16 New Members
Zeta (Penn State University)

Executive Director Award
16 New Members
Zeta Beta (Tarlton State University)

Executive Director Award
17 New Members
Delta (Colgate University)

Executive Director Award
18 New Members
Beta (Cornell University)

FOND FAREWELLS

Charles John "Jack" Hughes graduated from Delta Chapter at Colgate University in 1940. Our friendship began in the fall of 1936 when Jack and I pledged Kappa Delta Rho Fraternity and continued for 60 years as Jack remained my closest Colgate friend and a man I respected for his remarkable motivation and great resourcefulness.

Jack's entrepreneurial ingenuity put him through college. He traveled through the dorms selling candy and coercing subscriptions to the *N.Y. Herald Tribune* from unsuspecting freshmen. I even heard stories of Jack discussing the sale of the radiators for their dorm rooms.

As a result, Jack graduated a modestly wealthy man. He moved to New York, working first at the *Tribune*, and later, selling telephone equipment. It was there that he met his wife, Barbara, and together they returned to Madison, New York and set up a successful appliance business.

Jack's contributions to the Colgate community were numerous. He was the acknowledged leader of the Class of 1940 alumni, running each reunion

with style and heading up a fundraising campaign so strong it deemed the class a reputed leader in participation.

The secret to Jack's many accomplishments was his concern for others. He shepherded the young men of KDR for over 40 years, taking care to lead each one through school and out into the world. As a strict but fair guide, I'm sure that hundreds of them would attest to his great influence. We have lost a man who set an extraordinary example of service and dedication. His friends, his fraternity, and his college will not be the same without him.



Charles
John "Jack"
Hughes, '40

GEORGE W. FISK '40

John W. Taylor, '58

John W. Taylor graduated from the Zeta Chapter at Penn State University in 1958. On June 26, 1996, Kappa Delta Rho lost a good friend and brother. John graduated with a business degree and began his career at Penn State's Student Loans and Scholarship office where he dedicated nine years. He was business manager of Fayette Campus for five years and the financial director of Capitol Campus for nine. In 1986, he retired from a position as director of finance for the Commonwealth Education System which he served for five years.



John was an active member of his chapter and continued to serve his fraternity from the day he graduated. In recent years, he served as treasurer of the National Fraternity and as a member of its board of directors. At the time of his death, John was serving as a director and member of the Finance Committee.

John was a common face around the National Office. He came in quarterly to prepare taxes and catch up with fraternity affairs. He became a good friend and mentor to those who had the pleasure to work with him and will be sorely missed.

Alvah Borah graduated from the Eta Chapter at the University of Illinois in 1932. His life, presence, and dedication has had a profound influence on the development of Eta chapter and the Kappa Delta Rho Foundation.

I first met Al in 1983 when I was freshman. He and his pledge brothers would return to the chapter for Homecoming and fraternity functions and were noticeably present to support the chapter and its members. They bore witness to the chapter's beginnings—as pledges in the fall of 1928 when the chapter moved into its newly constructed home. They became the chapter's historians and storytellers, giving us our collective memory and the perseverance to push through difficult times. They remem-

Alvah Borah, '32



bered aloud about prohibition, the depression, and the means that it took to literally "hang on" to the chapter house during those years.

Although Al spent his career as a salesman, banker, and businessman, he found the time to be a leader within the National Fraternity. In 1983 he served as one of the original trustees of the newly formed Kappa Delta Rho Foundation. Through his generosity, funds were made available to organize the foundation, and today, thirteen years later, the Kappa Delta Rho Foundation is a critical part of the success of Kappa Delta Rho, conducting an annual fund campaign totaling over \$126,000 last year and awarding over \$20,000 in scholarships to undergraduates.

Al and his pledgebrothers taught me the meaning of 'Fraternity.' Theirs was a lifetime commitment of service to both community and individual. My sadness at the loss of a brother and friend is as deep as the gratitude for the lessons learned. Alvah Borah's presence had a special influence on our chapter over the years, he will be greatly missed by both our chapter and our fraternity.

WILLIAM J. PARIS, ETA '87

Chapter Eternal

ALPHA

Henry E. Hunt '29
Portsmouth, NH
Richard L. Treat '41
Johns Island, SC

BETA

James H. Bugden '38
Albany, NY
Sidney Kachel '70
Burke, VA
Gordon F. Stevenson '32
Lakewood, NJ
Fred E. Uhl '24
Lansdale, PA
Roswell C. VanSickle '23
Fort Lauderdale, FL

GAMMA

Dr. Ralph A. Beaver '24
Brooklyn, NY
Joseph F. McKeon '40
Albany, NY

DELTA

Leonard B. Allen '27
Stamford, CT
William A.
Carpenter, Jr. '66
Montclair, NJ
Clayton W. Cook '19
(was Colgate's oldest
living alumnus)
Jacksonville, FL
Carlos G. Fuller '20
(Chapter Founder)
Philadelphia, PA
Charles J. Hughes '40
(Ordo Honorium)
Madison, NY
Robert E. Reid '35
Shoreham, NY

*"To thy happy
children of the
future, those of
the past send
greetings."*

INSCRIBED ON BASE
OF THE ALMA MATER
AT UNIVERSITY OF
ILLINOIS

EPSILON

William J. Calderbank '51
Wildwood, NJ
John L. Harrell '40
Michigantown, IN
Joseph S. Rohrabough '32
Mulberry, IN

ZETA

John W. Taylor,
(Honorary member of
KDR Board, former treasurer
and member of Founders'
Society)
State College, PA
Frederick M. Wintermute, Jr. '49
Bethlehem, PA

ETA

Alvah C. Borah '32
(Ordo Honorium and
member of Founders' Society)
Springfield, IL
Harold J. Rietveld '54
McLean, VA

THETA

Louis E. Gaston '48
Coatesville, IN
Charles J. Kennedy '42
Malibu, CA
Albert D. Lutgens '37
East Peoria, IL
Wilbur G. Wood '26
Glendale, CA
George V. Woodling '23
Rock River, OH

IOTA

Ernest C. Mueller '39
Lake Jackson, TX
Frank X. Showell '63
Easton, MD

KAPPA

Frank S. Bonner '50
Columbus, OH
Floyd H. McKenna '52
Newark, OH
Col. Harold C. Miller '33
Marmara, NJ

LAMBDA

James C. Duerr '64
Goleta, CA
James H. Elmendorf '45
Orinda, CA
Lyman R. Fink '32
(Ordo Honorium)
San Francisco, CA
Kenneth A. Garcia '50
Sacramento, CA
Herbert H. Hughes '27
Danville, CA

MU

David G. Mickle '30
Juno Beach, FL

NU

William H. Alter '46
Bedford, IN

XI

Robert A. Stander '50
Lafayette, LA

PI

John A. Fitch '33
Pittsburgh, PA
Russell W. Heiges '35
Pittsburgh, PA

RHO

Joseph F. Braid, Sr. '43
Easton, PA
Robert S. Leighton '52
Portland, ME
C. Albert Kind '39
Storrs, CT
Joseph A. Munder '55
Plano, VA
Robert G. Nyberg '43
Sterling, VA
Howard B. Reed '32
St. Johnsbury, VT
C. Daniel Rush '42
Lake Ronkonkoma, NY
Mervin L. Saul '28
Hazelton, PA
Calvin C. Talmage '48
Avon-by-the-Sea, NJ
Robert B.
Thompson, Jr. '24
Hanover, NH
Edwin C. Winship '55
Charleston, SC
Edwin S. Worster '31
Fort Myers, FL
Leo A. Zack '39
Charleston, SC
Jack Richard Zahn '33
Wilmington, DE

SIGMA

William Nightingale '49
Lynnwood, WA
David L. Swall '52
Tulare, CA

UPSILON

Lewis L. Larae '51
El Paso, TX
Arleigh McConnell '42
Ventura, CA

PHI

Charles Montgomery '49
Muskogee, OK

PSI

Edson S. Hockenbury '59
Pocomoke City, MD

EPSILON BETA

Richard T. Swift '96
Newport News, VA

ORDER OF THE PEREGRINE FALCON

Beta Chapter continues to hold a commanding lead in the number of individual members of the Order of the Peregrine Falcon, undergraduate giving society of the Kappa Delta Rho Foundation.

The Order of the Peregrine Falcon is a public and visible means by which the Foundation can acknowledge and thank the dedicated undergraduate members of the fraternity for contributing their personal resources to support the programs of the Foundation. Any undergraduate member of the fraternity may become a member by making an unrestricted contribution of at least \$35 to the Kappa Delta Rho Foundation. Each member receives a special recognition pin and numbered certificate. The following brothers are members (through August 13, 1996):

**Members Listed
by Chapter****Beta**

Jason H. Biegelson '96
Michael S. Buff '97
Patrick M. Carr '96
Bryan J. Cohen '97
Michael H. Craine '98
Michael V. Daniels II '99
Toby S. Emo '97
Nathaniel B. Forman '97
Matthew M. Glenn '97
Pankaj C. Gupta '97
Joshua M. Herman,
pledge
Michael J. Higley '98
Michael T. Lambert '96
Daniel LaPlaca '96
Jeffrey P. Newman '98
Domenick L. Schirripa,
pledge
Jeffrey Shapiro, Pledge
Stephen M. Thomas '98
Michael E. Van Brunt '97
Louis D. Wolinetz '96
Delta
Brent W. Grable '98
Zeta
Sean R. Marcucio,
pledge
Eta
Walter S. Burns '98
Scott M. Meister '99
Theta
Scott A. Devine '97
Richard J. Gibson '97

Bradley E. Hartzell '96
Chad T. Peck '96

Iota

Joseph J. Berry '96
William A. Lake III '96
Nu
T. J. Tryon, Jr. '96
Jeremy J. Bartfield '96
Frederick H. Buehl II '98

Rho

Ronald G. Clark, Jr. '97
Lachlan W. McLean '98
Patrick O'Meara '97
Brian M. Rodowicz '96
David R. Schoenhaar '96

Tau

Wing-Long Cheung '99
Omega
Michael A. Jamison '96

Alpha Alpha

John T. Nolan, '97
Theta Alpha
Russell J. O'Connor '97

Lambda Alpha

Joseph B. Manno '98
Jason S. Salegna '97

Mu Alpha

Brett M. Ferro '98

Pi Alpha

Vernon E. Hurd '96
Craig M. Ortega '97

Tau Alpha

Henry T. Goode II '96
Christopher B. Miller '97

Upsilon Alpha

Paulo J. Melo '99

Psi Alpha

Wayne R. Croyle '00
Omega Alpha
Benjamin K. Smith '97
Benjamin E. Skowysz '97

Alpha Beta

William B. Myles '97

Delta Beta

Steven W. Lewis '96

Zeta Beta

Christopher J. Dietel '97
Christopher K. Gordon
'95

Sean C. Hatfield '97

Lambda Beta

Allen D. Schutz '97

Mu Beta

Nicholas M. Petruncio
'99

Jonathan H. Lay '98

Omicron Beta

Michael J. Ostermueller
'96

Pi Beta

Ian O. Lauer '96

Tau Beta

Brian W. Bender '97
Thomas B. Tomlin '97

Upsilon Beta

D. Wil Plyler, Jr. '99

Chi Beta

Bill E. Day III '97
Jonathan R. Strickland '96

Psi Beta

Ryan M. Ofcharsky, '98
Brian P. Weida, '98

CORRECTIONS

A Case of Mistaken Identity. In the Spring 1996 Quill and Scroll it was incorrectly reported that John Youngman, Alpha '64 was recently appointed as a non trustee member of the Foundation Investment Committee. We should have reported that Robert Youngman, Alpha '64, was appointed to the committee. John is Bob's son and is also a KDR from Alpha Chapter.

False Alarm. We reported that Eric A. Saloom, Theta Alpha '86, was deceased. A note from Brother Saloom shows him alive and well. We deeply apologize for this error.

Misst Spellings. John G. Smale, a charter member of Lambda '24, who resides in Chico, California,

informed us of errors in the article about rechartering Lambda Chapter. He states, "One of the original four founders was Ed Stanley, not Stoley. Also, Henry spelled his name Greene (i.e.) with a final e. One further error was made in Chapter Eternal. Albert Larsen, not Larson."

CHAPTER NEWS

Look for updated news
information in the Spring 1997
issue of the Quill and Scroll.

Kappa Delta Rho Foundation

The Kappa Delta Rho Foundation had another very successful year. The 1995-96 Annual Campaign ended on June 30 with contributions totalling \$162,316.73, a 64 percent increase over the 1994-95 campaign total of \$104,668.38. Unrestricted contributions were up 22 percent to \$120,137.92, and restricted contributions increased an amazing 376 percent to this year's unprecedented

Eta '90; Ray C. Hunt, Jr., Rho '53; and George J. Peer, Theta '45, are the leaders guiding your foundation into the year 2005 and our Centennial Celebration.

For the second year in a row, the trustees convened their semiannual meeting at a college campus with a KDR chapter. This year, Alpha Beta Chapter at the University of Delaware hosted the trustees with a backyard barbecue. The hospitality of Consul William Myles and all the Alpha Beta brothers was greatly appreciated. The trustees enjoyed meeting and talking with our undergraduate members and learning what they are looking for to make their college KDR experience more fulfilling.

We are delighted to see a growing number of undergraduates joining the Order of the Peregrine Falcon, and many renewing their membership during the 1996-97 Annual Campaign.

Looking toward the future, our 1996-97 Annual Campaign is well under way. We anticipate a very promising year with the help of our more than 17,000 alumni and undergraduates. If you have not yet made your tax-deductible donation to the Annual Campaign, please consider a gift today. KDR makes a difference in every undergraduate's life.

Fraternally,
Paul A. Downes, Gamma '68
President

**"...honor and integrity,
the hallmarks
of our brotherhood"**

\$42,178.81. The number of contributors increased to 1,272.

Thank you to all of our undergraduate members and alumni who continue to support and foster our foundation scholarship and leadership programs. We deeply appreciate this outpouring of support.

Kappa Delta Rho is very fortunate to have volunteer foundation trustees who exemplify honor and integrity, the hallmarks of our brotherhood. The trustees Andrew F. Barth, Nu Alpha '83; Robert D. Corrie, Beta '53; Andrew W. Hibell,

SCHOLARSHIP ENDOWMENT ESTABLISHED

GREENSBURG, PA

On February 9, 1996, the Rho Alumni Corporation of Kappa Delta Rho, Inc., and the Kappa Delta Rho Foundation established the Rho Alumni Endowment Fund. Its purpose is to provide scholarships to deserving young men who are members of the Rho Chapter of Kappa Delta Rho at Lafayette College, to assist them with their educational expenses. The endowment will be managed by the Kappa Delta Rho Foundation Investment Committee.

Beginning in August 1996, scholarships will be awarded each year, with applicants

being solicited by the foundation each spring. The scholarships will be available to sophomore, junior, or senior members of the Rho Chapter.

Scholarship recipients will be determined by the Foundation Scholarship Committee based on the following criteria:

financial need, service to the fraternity and Greek system, and service to the campus and community.

The Kappa Delta Rho Foundation is a not-for-profit, charitable foundation. Started in 1984, the foundation provides scholarship opportunities to the fraternity's members, as well as providing direct grant support

for the educational initiatives of the National Fraternity of Kappa Delta Rho. A few of these programs include the annual Williams Leadership Academy, five regional conclave leadership development seminars, the Regional Senator program, and the Chapter Advisor program.

Originally founded in 1923, the Rho Alumni Corporation of Kappa Delta Rho is a not-for-profit corporation that manages the assets of the Rho Chapter of Kappa Delta Rho. Its board of governors consists of alumni volunteers who provide advice and guidance to the undergraduate fraternity members on topics ranging from chapter operations to personal development.



NEW FOUNDER'S SOCIETY MEMBERS

The Kappa Delta Rho Foundation is pleased to welcome three new members to the Founder's Society. There are several levels of giving within the Founders Society: Benefactor, \$1,000-2,499; Philanthropist, \$2,500-4,999; Patron, \$5,000-9,999; and Grand Patron, \$10,000 or more. Membership in the Founders Society is based on a members contributions to the annual fund of the Kappa Delta Rho Foundation.

Donald Muyskens, Rho '54. (Benefactor) Don graduated from Lafayette College in 1954. He is retired as President and Representative Director of Caltex Oil Japan K. K. He presently resides in Houston, TX with his wife.

James Buterbaugh, Zeta '55. (Benefactor) Jim graduated from Penn State University in 1955. He is retired from the Allendale Insurance Companies and resides with his wife in Dunwoody, Georgia.

Mark Lundgren, NU '70. (Benefactor) Mark graduated from Indiana University in 1970. He currently works in the real estate office for the Department of the Navy in the Northeast region. Mark is a member of the Board of Directors for the National Fraternity and resides with his wife and son in Drexel Hill, Pennsylvania.

HERITAGE SOCIETY

The Heritage Society, sponsored by the Kappa Delta Rho Foundation, recognizes those brothers and friends of the fraternity who have included the Foundation as part of their estate plans. The brothers listed below have given notice that they have included the Kappa Delta Rho Foundation in their estate plans.

Have you already included the Foundation in your estate plans? If so, notify the Foundation executive offices today so we may include your name among the list of dedicated brothers planning for the future of KDR.

James F. Edgeworth Sr., Psi '56
Paul A. Downes, Gamma '68
William J. Paris, Eta '87
Alvah Borah, Eta '32
Art Nelson, Eta '32
Daniel R. Johnsen, Theta '62
John D. Winters, Theta '55
Lee Idleman, Iota '54
Christopher Harley, Lambda '74
Max H. Schulze, Nu '61
Very Reverend Harold F. Lemoine, XI '32
Thomas Delac, Pi Alpha '94
Dean B. Rissolo, Rho Alpha '89
Joseph W. Rejuney, II, Epsilon Beta '89
Andy Hibell, Eta '90 (new member)



The Kappa Delta Rho Foundation

Investing in the Lives of Students

1984 saw the establishment of the Kappa Delta Rho Foundation. Its purpose . . . to support educational programs and provide scholarships as an **investment** in the lives of individual undergraduate KDR's.

Your donation matters! Since 1984, generous alumni support enabled the Foundation to invest over \$500,000 in the lives of undergraduate KDR's through support of the fraternity's educational programs. In addition, the Foundation awarded nearly **\$60,000** in scholarships to deserving KDR's.

A **donation** to the Kappa Delta Rho Foundation is an **investment** in the lives of student brothers of **our** fraternity!

Please consider joining the over **thirteen hundred** brothers who make tax deductible contributions to the Foundation each year.

Your support **does matter!** Together, we are **making a difference!**



The Kappa Delta Rho Foundation

Investing in the Lives of Students

I want to make a difference! I enclose my tax-deductible contribution of:
____(\$15) ____(\$25) ____(\$50) ____(\$75) ____ (other)

Please make your check payable to the Kappa Delta Rho Foundation or you can charge your donation to your Visa or Mastercard.

Card number _____ Expiration date _____

____ Visa or Mastercard (circle one)

Signature _____

____ My employer will match my contribution, my matching gifts form is enclosed!

To ensure proper credit, please complete the following:

Mr. _____

Chapter _____ Graduation Year _____

Street _____

City _____ State _____ Zip _____

____ Note if new address

Company _____

Position _____

____ I have included the Kappa Delta Rho Foundation in my estate plans.

____ I would like more information about gifts of property, stock, or other types of planned gifts to the Kappa Delta Rho Foundation.

Annual Fund — Special Recognition Clubs

FOUNDER'S SOCIETY:

Grand Patron	\$10,000 and higher
Patron	\$5,000 - 9,999
Philanthropist	\$2,500 - 4,999
Benefactor	\$1,000 - 2,499

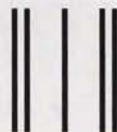
Other recognition clubs:

Silver Club	\$35.00
Gold Club	\$50.00
Ruby Club	\$100.00
Sapphire Club	\$250.00
Emerald Club	\$500.00
Diamond Club	\$750.00

Tear off along perforation and enclose in envelope provided.



The Kappa Delta Rho Foundation
Investing in the Lives of Students



PLACE
STAMP
HERE

Annual Fund
Kappa Delta Rho Foundation
331 South Main Street
Greensburg, PA 15601-3111



Kappa Delta Rho Foundation 1995-96 National Scholarship Winners

\$250 Q. D. ROBERTS MEMORIAL SCHOLARSHIP
John E. Kocka, Pi Alpha '97

\$250 ROBERT D. LYND SCHOLARSHIP
Bradley A. Windbigler,
Pi Alpha '98

**\$250 E. MAYER MALONEY
MEMORIAL SCHOLARSHIP**
Brett M. Ferro, Mu Alpha '98

**\$250 HORACE E. SHACKELTON
MEMORIAL SCHOLARSHIP**
Kevin J. Williams, Chi Beta
'98

\$250 PAST RECIPIENTS SCHOLARSHIP
Nicholas J. Giordano,
Iota Pledge

Chapter Scholarships

\$250 BETA CHAPTER SCHOLARSHIP
Lawrence C. Weintraub, Beta
'98

\$250 DELTA CHAPTER SCHOLARSHIP
John S. Weaver, Delta '98

\$250 ZETA CHAPTER SCHOLARSHIP
Stephen M. Melisi, Zeta '99

**\$250 KENNETH E. KRAMER
MEMORIAL SCHOLARSHIP (ZETA CHAPTER)**
Jason D. Lavender, Zeta '97

\$250 ETA CHAPTER SCHOLARSHIP
James R. Cameron, Eta '97

**\$500 JOHN C. CARL THETA
CHAPTER SCHOLARSHIP**
Chad T. Peck, Theta '96

**\$250 THETA CHAPTER VETERAN'S
MEMORIAL SCHOLARSHIP**
Thomas O. P. Sweeney,
Theta '99

\$250 IOTA CHAPTER SCHOLARSHIP
Peter C. R. Larsen, Iota '98

\$250 NU CHAPTER SCHOLARSHIP
Jeremy J. Bartfield, Nu '96

\$250 RHO CHAPTER SCHOLARSHIP
Daniel J. Hanna, Rho '97

\$2,580 RHO CHAPTER ALUMNI SCHOLARSHIPS
Daniel A. Bills, Rho '97
Ronald G. Clark, Rho '97
Patrick F. O'Meara, Rho '97
Darryl B. Lee, Rho '97
Kevin M. Kasarjian, Rho '97
Colin H. Lautz, Rho '98

Specified Scholarships

**\$800 COMMERFORD B. MARTIN
MEMORIAL ENGINEERING SCHOLARSHIP**
Patrick F. O'Meara, Rho '97

\$500 ELMON M. WILLIAMS M.B.A. SCHOLARSHIP
Christopher J. Epperson, Zeta '90

**Gordon Johnson Memorial
Law Scholarship**
\$1,000 First Year Stipend
John M. LaRosa, Alpha Beta '96

Stock Gifts Keep Giving

The rapid rise in the value of the stock market is creating an exciting opportunity for many of our members—the opportunity to make a gift of appreciated stock. Appreciated assets can often create a variety of estate and other tax problems. By making a gift of these appreciated securities to the Kappa Delta Rho Foundation you receive many rewards.

First, you avoid paying capital gains tax on the appreciated value of your stock. Second, you receive a present charitable income tax deduction for the full value of your stock. Third, you have the benefit of knowing you are helping the many young men who benefit each year from the programs supported by the Kappa Delta Rho Foundation.

You may make this type of gift to support the annual fund, restrict the gift to endow a spe-

cific scholarship or restrict the gift to build the general endowment of the Kappa Delta Rho Foundation.

If you would like to explore the opportunities available to you, please contact William J. Paris, Executive Director, The Kappa Delta Rho Foundation, 331 South Main Street, Greensburg, PA 15601, (412) 838-7100.

DOUBLE YOUR GIFT!

Many companies offer matching programs to double the charitable contributions of their employees. This is a painless way to double your gift to your

favorite charities. In most cases, all you need to do is speak to your personnel department about completing a matching gift form. You complete the form and send it to the Foundation along with your contribution. We do the rest.

These matching gifts add up. If your company has a matching gifts program, take advantage of this opportunity to double the impact of your generous support of Kappa Delta Rho!

If you are uncertain that your company

has a matching gifts program, a quick call to your personnel department will provide you with an answer.

GIFTS RECEIVED FROM COMPANIES WITH MATCHING FUNDS

LILLY ENDOWMENT, INC.
William M. Goodwin
THE SUN MICROSYS-
TEMS FOUNDATION, INC.
Clinton Heyd
THE UPS FOUNDATION
Stephen R. Knapp
CARTER-WALLACE, INC.
Glenn Gniirrep
FREEPORT-MCMORAN
Roger S. Austin
ALLENDALE INSURANCE
FOUNDATION
James H. Buterbaugh

Q: How Can I Make a Planned Gift to the Foundation?

A: Two common ways our brothers are making plans for the future of our fraternity involve life insurance and bequests in their wills.

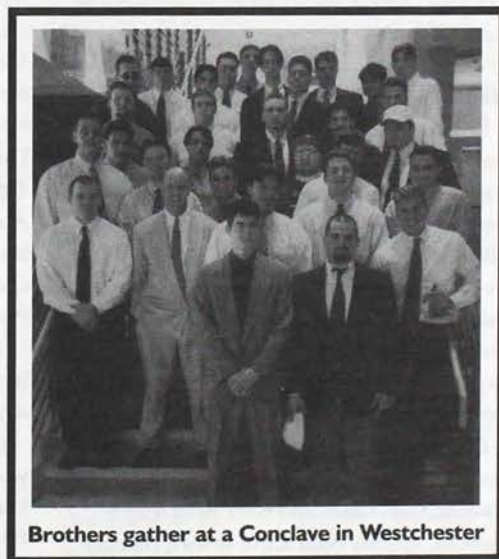
You may have an old, paid up life insurance policy that you no longer need. If this is the case, you may name the Foundation as the beneficiary of the policy. Or, you can give the policy to the Foundation and receive a present charitable tax deduction for the cash value of the policy.

You might also have a life insurance policy provided by your employer. You could choose to name the Foundation as the beneficiary for all or part of the proceeds of the policy.

A very common way to plan for the future is to have a Will. This document, generally drafted by your attorney, provides instructions on what happens to your assets should something happen to you. You may wish to include the Foundation as a beneficiary of a gift in your Will. A bequest can take many forms such as a specific dollar amount or percentage of your total estate, or perhaps a gift of securities or real estate. If you are considering a gift, it is recommended to consult your attorney or financial advisor. The follow-

ing wording is suggested; "I hereby give to the Kappa Delta Rho Foundation, a Pennsylvania Corporation, the sum of \$_____ to be used for the general purposes of the Foundation as the Trustees may direct." Gifts to the Foundation are deductible for estate tax purposes. It is an excellent way to provide for our fraternity's future.

Please direct questions and requests for any further information to William J. Paris at the National Headquarters, (412-838-7100).



Brothers gather at a Conclave in Westchester

ORDO HONORIUM

The following brothers were initiated into the Ordo Honorium.

Cornelius C. Jones, Beta '53

Brother Jones graduated from Cornell University in 1953. In 1964 he received his Master's in Business Administration from the University of California at Berkeley. He engaged in non-degree study programs at Biblical Seminary of New York and Berkeley Baptist Divinity School.

From 1953 to 1955 Jones served as a First Lieutenant Airborne, in the United States Army Medical Service Corp. In 1957 he was appointed to the American Baptist Foreign Mission Society, serving in the home office financial section until he left for India.

Jones spent thirteen years as a missionary in India. In 1972 he moved to Thailand to continue his missionary work for eight years. Jones served as the representative for Estate Planning Service of the American Baptist Foreign Mission Service from 1981 to 1983 when he assumed the role of director.

Presently, Jones serves as the treasurer and the medical correspondent and budget director of the American Baptist Foreign Mission Service. He is also currently on the Investment

Committee for the American Baptist Foundation and is the corporate vice president of the American Baptist Computer Center.

During his time at the Beta Chapter, he served as Consul from 1951 to 1953 and was a trustee of the Kappa Delta Rho Foundation from 1990 to 1994.

William L. Nichol, Zeta '60

Brother Nichol attended Pennsylvania State University, graduating in 1960 with a Bachelor's of Science degree in Education. He went on to receive his master's degree from Millersville University in 1961. While he was working on his master's degree, Nichol taught industrial arts in the Newark Special School District in Delaware. Since 1971 he has been an assistant professor of Agricultural Engineering at the University of Delaware.

Brother Nichol has served his church as a youth advisor, deacon, and ruling elder. He has coached Colt, Little, and Babe Ruth league baseball, and has been active in 4-H, conduct-

ing various workshops. He is currently a Delaware Hunter Education Instructor and Young Waterfowler Instructor for the Delaware Wildlife Federation.

Brother Nichol has been nominated three times for the University-wide Excellence in Teaching Award and has received the State and County Appreciation Award for volunteer service to the hunter education program.

While Brother Nichol was an active member of the Zeta chapter he held the position of house manager. He assisted in the organization of the Alpha Beta Chapter at the University of Delaware and is their faculty advisor.

Bob B. Stern, Theta '54

Brother Stern attended Purdue University where he received his Bachelor's of Science degree in 1954. After graduating from Purdue, he served the U. S. Army as a First Lieutenant at the Research Army Chemical Center in

manager, and the chairman of the KDR Over-the-Hill Gang's homecoming festivities. He was honored by the Theta undergraduate chapter with the Outstanding KDR Alumni Award this year.

Wesley L. Litzinger, Zeta '73

Brother Litzinger received his Bachelor's of Architecture degree in 1973 from Pennsylvania State University. After graduation, he worked as a design draftsman from 1973 until 1981, when he became a project manager for The Hill Partnership. In 1990 Brother Litzinger became a project director for CYP. He is now a principal at Litzinger & Associates.

He has served on the Board of Design Review and Adjustments for the City of Laguna Beach. He is a member of the American Institute of Architects, National Council of Architectural Registrations Boards, and the International Conference of Building Officials.

Brother Litzinger was initiated by the Zeta Chapter and served as the senior tribune and

consul. As an alumnus he serves on the Zeta Alumni Board and is a member of the board of directors of KDR Properties, Inc.

Robert V. Kiser, Rho '74

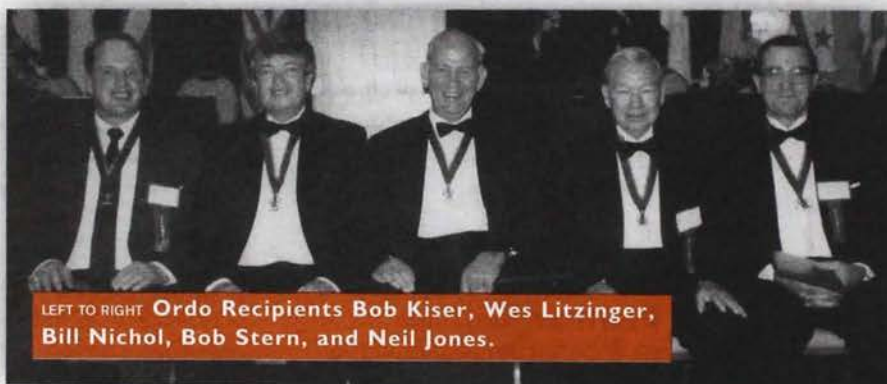
Brother Kiser graduated from Lafayette College in 1974 with a Bachelor's of Science

degree in Civil Engineering. Upon graduating he became an engineer for the city of Easton, Pennsylvania, taking on the role of director of public services/city engineer in 1978. He is currently the township engineer/director of public works for the city of Princeton, New Jersey.

Brother Kiser has been a leader, serving as president of the New Jersey Society of Municipal Engineers, the American Public Works Association, and the Public Works Association of New Jersey. He has won the first place Project of the Year Award from the New Jersey Society of Municipal Engineers three times. He was named Engineer of the Year by the New Jersey Society of Municipal Engineers and Young Engineer of the Year by the Lehigh Valley Section of the Pennsylvania Society of Professional Engineers.

He has also been active in his community through the Bridgewater-Raritan School District, serving as chairman of the District

continued on back cover



LEFT TO RIGHT Ordo Recipients Bob Kiser, Wes Litzinger, Bill Nichol, Bob Stern, and Neil Jones.

Maryland. In 1957 Brother Stern became the chief pharmacist and store manager of a pharmacy chain in West Lafayette, Indiana. He served as the director of pharmacy at the Indiana Veteran's Home from 1984 until his retirement in 1994.

He has been on the board of trustees of the Methodist Church and has been the director of the Kiwanis Club and the Local State Board of Health. He has served as treasurer for the West Lafayette Business Men's Association and the Tippecanoe County Pharmaceutical Association. Brother Stern has also dedicated his time to the Lion's Club, Lafayette Elks Club, Boy Scouts, American Legion, the John Purdue Club, Ducks Unlimited, and Quail Unlimited. Brother Stern was affiliated with the Indiana State Cystic Fibrosis Organization, where he served as director.

He was the Theta house manager for three years. Since then he has served on the Theta Foundation Board of Directors for thirty years. He is the current alumni advisor and house

CONTRIBUTIONS BY CHAPTERS

ALPHA MIDDLEBURY COLLEGE

\$7,313
Stephen H. Arnold, '41
Christopher A. Barry '91
Robert J. Baskin '64
Peter N. Bohn '43
Scott H. Buzby '51
Philip L. Carpenter '33
Francis L. Cooper '74
Nelson R. Easton '41
Lewis G. Ensinger '44
Clifford W. Fulton '42
Frederick J. Grab '40
Brian C. Green '89
Robert C. Hall '65
Gordon E. Hoyt '36
Robert A. Jones '59
Lucius R. Kempton '55
Eugene M. Koellhoffer '74
James J. Lafronz '85
Stephen J. Markham '50
John L. McEwan '60
William Millman III '72
John A. Moser '61
Curtis B. Norris '51
Russell A. Norton '38
Stanley V. Peterson '34
Halbert E. Phillips '26
John L. Rice '40
Henry M. Richardson '38
David C. Ruberg '68
G. Crossen Seybolt, Jr. '77
Daniel M. Silverschein '87
Todd J. Stanley '89
David D. Steece '72
Peter T. Stewart '71
Raymond B. Strong III '91
William T. Watt '39
R. Glen Wehrwein '68
Vernon M. Wright '41
Ferdinand Wyckoff, Jr. '54
John G. Youngman '90
Robert P. Youngman '64

BETA CORNELL UNIVERSITY

\$9,166
William M. Ackerman '75
Roy P. Allen '56
Brian W. Apgar '92
Jason H. Biegelson '96
Philip J. Bracht '78
Roger C. Burggraf '55
Patrick M. Carr '96
Wesley A. Clark '73
Millard V. Cogshall '37
Bryan J. Cohen '97
Lee T. Corbett, Jr. '59
Robert D. Corrie '53
Michael H. Craine '98
Scott A. Crego '86
Howard F. Crumb '53
Dale H. Cutler '35
Michael V. Daniels II '99
Bruce L. Davis '60
Gordon R. Dennis '54
Toby S. Emo '97
Paul W. Feeney '55
Richard A. Ferrari '54
Nathaniel B. Forman '97
Charles H. Fowler '73
Matthew M. Glenn '77
Philip R. Goodrich '63
Pankaj C. Gupta '97
David J. Harding '72
Michael J. Higley '98
Ralph L. Higley '30
Charles C. Howell '87
John H. Humpton III '76
Aaron F. Hunt '95
Richard G. Jackson '63
Cornelius C. Jones '53
Mark S. Kachigian '46
Paul E. Karchin '75
Storm E. Kildoye '77
David L. Ladd '58
Michael T. Lambert '96
Daniel LaPlaca '96
Dale S. Lazar '74
Kenneth Lerman '66
Dean B. Livingston '72
William H. MacInnis '64
Commerford B. Martin, Dec. '33
Howard S. Mather '36
David R. May '80
Michael A. McCarthy '57
William D. Munch '76
Robert W. Neureuter '45
Jeffrey P. Newman '98
James A. Oest '31
John R. Padgett '58
Stuart Pergament '87
Milton W. Pinckney '39

Allan W. Porowski '94
Merton M. Pultz '43
Frederick W. Rea '31
Harold A. Reynolds '30
James L. Rose '40
Bradford J. Ross '81
Robert R. Saltzman '75
Philippe G. Savary '72
Alan C. Schussheim '90
Walter R. Stillman '56
Robert W. Thomas '57
Stephen M. Thomas '98
Scott D. Thyng '72
Michael E. VanBrunt '97
Blaise P. Vitale '84
James J. Whalen '57
Walter N. Whitney '31
Louis D. Wolinetz '96

GAMMA

S.U.N.Y. ALBANY
\$2,868.83
Hamilton Acheson '31
Wilfred P. Allard '35
Anthony T. Amerlio '60
David L. Anderson '69
Richard
Bardeschewski, Jr. '71
Richard S. Beach '48
Gerard R. Brophy '51
Robert T. Carr '42
George E. Decker '36
Dennis J. Dole '41
Paul A. Downes '68
Robert E. Goodrich '32
Harold A. Haynes '38
Otto J. Howe '40
Donald C. Hoyt '50
Herbert W. Leneker '43
Robert A. Leonard '43
Charles F. McVoy '42
Curtis L. Pfaff '48
Robert E. Reid '71
Alan R. Stephenson '52
Daniel L. Van Leuvan '35
Richard E. Wagner '54

DELTA COLGATE UNIVERSITY

\$1,415
Alan S. Anderson '70
Paul J. Behar '94
Joseph L. Benero '52
William C. Brigham '44
David S. Bundy '80
Rufus P. Collea '89
John E. Costello '91
Seymour L. Ellison '53
J. David Gaines '61
Robert L. Glendening '71
George Godfrey III '87
John S. Goodreds '56
Charles H. Harff '51
Charles J. Hughes '40
Gilbert B. Ide, Jr. '48
Ellsworth P. Johnson '44
Peter R. Liebschutz '60
Nicholas J. Mayer, Dec. '42
H. Paul Mosher '56
K. Stephen Parmelee, Jr. '59
James M. Quigley '48
David S. Reed '86
Robert E. Reid '35
John S. Rothschild '49
Donald T. Ruby '38
Robert G. Schreiber '49
Douglas V. Simpson '48
Jack F. Sinn '43
Howard Sutliff '50
Kenneth B. Tate '45
Ronald J. Taylor '63
George J. Terra-Nova '62
Paul B. Thompson '43
Christopher R. Torell '90
N. John Torres '85
James H. Tweed '70
John P. Wait '54
Edward G. Watson '33
Scott H. Werner '59
H. Drake Williams, Jr. '61
Daniel U. Wiseman '85
Graydon R. Wood '60
Willard N. Woodward '36

EPSILON FRANKLIN COLLEGE

\$2,842
Gordon A. Bardos '65
Charles E. Benson '60
Reinhard W. Bockstette '68
S. Carlisle Botts '30
Frank L. Brame, Jr. '52
Russell R. Campbell '29
David R. Coffin '68
Ronald H. Cohen '66
Robert S. Conner '65
Q. Arthur Day '43

SPECIAL RECOGNITION CLUBS

Clare and Gordon Johnson Annuity Trust

\$5,000

Commerford B. Martin Engineering Scholarship Fund

\$5,000

Rho Chapter Alumni Scholarship Fund

\$30,500

Theta Veteran's Scholarship Fund

\$9,636

Oregon Community Foundation (Loran L. Stewart Fund)

\$1,000

FOUNDER'S SOCIETY GRAND PATRON

\$10,000 OR MORE

Lee H. Idleman, Iota '54

PATRON

\$5,000 - \$9,999

Robert A. Jones, Alpha '59
Wally Miller, Theta '59
William M. Steinfeldt, Theta '38
Andrew F. Barth, Nu Alpha '83

PHILANTHROPIST

\$2,500 - \$4,999

BENEFACTOR

\$1,000 - \$2,499

Paul A. Downes, Gamma '69
James D. Kowalski, Epsilon '57
James H. Butterbaugh, Zeta '55
William J. Paris, Eta '87
John C. Carl, Theta '51
George J. Peet, Theta '45
Robert D. Lynd, Iota '67
Ray C. Hunt, Jr., Rho '53
Richard D. Kline, Rho '61
Donald Muyskens, Rho '58
Howard A. Rubin, Rho '77
Loran L. Stewart, Sigma '32

DIAMOND CLUB

\$750 - \$999

William L. Nichol, Zeta '59

William J. Deubel '70
Kevin D. Elmore '85
Robert W. Godshall '49
John B. Hachman '67
Robert M. Hutchings '40
Gene Kellams '35
Leon M. Kistler '69
J. W. Glenn Klipsch '33
Myron C. Knauff '41
James D. Kowalski '57
Marvin Paul Manteuffel '63
Frank K. Martin '52
Philip B. Nason '53
David E. Overmyer '70
Michael F. Petti '71
Albert W. Porter '41
Michael Rubosky '43
Henry F. Steinkamp '52
Noel A. Thomas, Jr. '70
Robert F. Volland '43
Archie C. West '36
David K. Wilkinson '52

ZETA PENN STATE UNIVERSITY

\$7,052.62

Ray A. Alberigi '57

EMERALD CLUB

\$500 - \$749

Frederick W. Rea, Beta '31
S. Carlisle Botts, Epsilon '30
Robert T. Butler, Zeta '87
John W. Taylor, Dec., Zeta
Honorary
Rev. Canon Knud A. Larsen, Eta '30
Frank E. Thomas, Kappa '52
William M. Goodwin, Nu '61

SAPPHIRE CLUB

\$250 - \$499

Robert D. Corrie, Beta '53
Reinhard W. Bockstette, Epsilon '68
Ronald L. Stief, Zeta '53
Alvah C. Borah, Dec., Eta '32
Timothy F. Moore, Eta '68
Anthony R. Pasquinelli, Eta '56
John David Reed, Eta '64
V. Richard Miller, Theta '63
Gerald L. Murray, Theta '66
Gary J. Buchmann, Iota '79
Eugene F. Corbin, Lambda '27
Ronald G. Clark, Nu '65
Jack D. Shinneman, Nu '62
Lawrence L. Swearingen, Nu '64
John E. Parker II, Pi '68
Roger S. Austin, Rho '62
Robert L. Gett, Omega '72

RUBY CLUB

\$100 - \$249

Glenn Gnrirrep
David C. Ruberg, Alpha '68
Vernon M. Wright, Alpha '41
Robert P. Youngman, Alpha '64
Roy P. Allen, Beta '56
Phillip J. Bracht, Beta '78
Roger C. Burggraf, Beta '55
Howard F. Crumb, Beta '53
Philip R. Goodrich, Beta '63
Ralph L. Higley, Beta '30
Cornelius C. Jones, Beta '53
Dale S. Lazar, Beta '74
David R. May, Beta '80
Michael A. McCarthy, Beta '57
John R. Padgett, Beta '58
Walter R. Stillman, Beta '56
Walter N. Whitney, Beta '31
Donald T. Ruby, Delta '38
Charles E. Benson, Epsilon '60
Q. Arthur Day, Epsilon '43
Scott A. Bailey, Zeta '69
John E. Booth, Zeta '51

Scott A. Bailey '69
John E. Booth '51
John J. Borbee '84
Robert A. Brumbaugh '63
David A. Burdette '81
Anson C. Burwell, Jr., '42
James H. Butterbaugh '55
Robert T. Butler '87
Bernard H. Carson '55
Peter A. Chaump '91
Peter M. Clarke '90
James P. Clugston '58
David T. Corradi '91
Michael S. Cover '78
William F. Covolus '66
Garry N. Crothers '55
Robert J. Dankanyin '56
Warren L. Davies '46
Erik R. Foster '79
Elmer W. Fry '45
William R. Fuchs '41
Earl H. Grissinger '53
Paul D. Guiteras '48
David R. Hamrick '57
E. David Harr '66
R. Merl Hess '54
Robert F. Holstead '45

William F. Covolus, Zeta '66
Robert J. Dankanyin, Zeta '56
David R. Hamrick, Zeta '57
Paul F. Hummer II, Zeta '63
David F. Irwin, Zeta '30
Thomas R. Jensen, Zeta '50
Wesley L. Litzinger, Zeta '73
John S. Moeller, Zeta '38
Clayton F. Ost, Zeta '55
R. Marshall Phillips, Zeta '60
Richard K. Stetzer, Zeta '82
John M. Sullivan II, Zeta '85
P. Duane Walker, Zeta '53
Albert B. Wrigley, Zeta '55
Arthur R. Gottschalk, Eta '49
Andrew W. Hibel, Eta '90
Norman G. Koubas, Eta '54
Robert M. Mitchell, Eta '38
Richard A. Miyazaki, Eta '84
Arthur S. Nelson, Eta '32
Randal C. Paniello, Eta '80
Donald G. Pyles, Eta '53
Gerald L. Robinson, Eta '85
Jerome W. VanGorkom, Eta '39
Franklin J. Vernon, Eta '34
Stanley W. Woods, Jr., Eta '58
Robert V. Adams, Theta '54
J. Gregory Carl, Theta '80
Fred O. Cook, Theta '63
V. Thomas DeVille, Theta '62
John Doddridge, Theta '61
William A. French, Theta '51
Clinton Heyd III, Theta '72
William F. Hogan, Theta '51
Daniel R. Johnson, Theta '62
James W. Jones, Theta '92
Charles F. Meinzer, Theta '87
David W. Morley, Theta '65
Russell E. Patton, Theta '51
George S. Peck, Theta '40
Tony J. Schmeltz, Theta '61
Bob B. Stern, Theta '54
Werner C. Trifshouser, Theta '56
Kenneth W. Wysong, Theta '29
R. Thomas Zimmerman, Theta '31
Scott A. Alfieri, Iota '94
David C. Ballard, Iota '71
John R. Behrmann, Iota '58
Charles W. Berger, Iota '75
George F. Blades, Iota '54
Garland Boothe III, Iota '84
William A. Lindberg, Iota '79
John G. Lore, Iota '67
Alexander McClintchill III, Iota '64
Walter A. Molawaka, Jr., Iota '71
Ernest C. Mueller, Dec., Iota '39
Angelo J. Pugno, Iota '53
William D. Schaeffer, Jr., Iota '70
Rudolph J. Tekaucic, Kappa '60
W. Drew Chick, Jr., Lambda '34
Stanley P. Jones, Lambda '26
W. Harry Lange, Jr., Lambda '34
Edward S. Beach, Nu '69
Kenneth A. Beckley, Nu '62

Paul H. Hughes '25
Paul F. Hummer II '63
David F. Irwin '30
Thomas R. Jensen '50
Steven C. Kelly '84
John R. Kosko '63
Wesley L. Litzinger '73
Vernon A. Long '65
Arthur W. Lotz '37
Sean R. Marcucio, Pledge
William H. Matz '44
Lee M. McQuiston, Dec. '48
John E. Megles '53
Robert E. Miller '52
John S. Moeller '38
James A. Morgart '59
William L. Nichol '59
Leo A. Nobile '48
John C. O'Connor '38
Allan J. Ofensend '54
Clayton F. Ost '55
Donald B. Partridge III '68
Donald P. Phillips '57
R. Marshall Phillips '60
Vincent I. Purcell '52
Thomas A. Pyle '54
David W. Reese '71

Miles C. Gerberding, Nu '54
James R. Hetherington, Nu '53
Richard D. Jones, Nu '64
Thomas C. Lockwood, Nu '56
Donald G. Loftus, Nu '65
Mark N. Lundgren, Nu '70
Duane E. Lupke, Nu '52
Thomas M. McGlasson, Nu '65
Claude T. Rich, Nu '29
Lowell L. Strawser, Nu '66
Donald E. Stroud, Nu '54
Donald K. Wemlinger, Nu '66
Dennis H. Ting, Xi '59
John A. Falcone, Rho '60
Walter B. Gilmour, Rho '39
Henry A. Lee, Rho '51
James D. Levi, Rho '59
Curtis K. Smith, Rho '67
Charles E. Snyder, Rho '29
H. Alan Vasoli, Rho '55
Gerald I. Wilson, Rho '60
Randal S. Saunders, Sigma '79
John J. Ginsburg, Tau '91
Jonathan S. Goldick, Tau '88
Dylan D. Newlander, Tau '92
Daniel C. Pavord, Tau '87
Thomas A. Westover, Tau '36
David M. Billee, Psi '62
Stephen E. DePalantino, Jr., Psi '91
James F. Edgeworth, Sr., Psi '56
William H. Gallagher, Psi '57
H. Milton Fry, Omega '63
Patrick B. Mikesell, Omega '62
Edward L. Bowes, Alpha Alpha '63
Richard DeBernardo, Jr., Alpha Alpha '75
Michael L. Peters, Alpha Alpha '91
Dennis L. Ritchey, Jr., Alpha Alpha '89
John J. Zureck, Beta Alpha '63
David L. McLuckie, Gamma Alpha '71
Steven Schillon, Gamma Alpha '65
Gregory Suran, Eta Alpha '92
William Speary III, Mu Alpha '93
Jason J. Chai, Nu Alpha '83
Chadwick A. Rupp, Pi Alpha '94
Thomas A. Fiore, Sigma Alpha '87
Christopher P. Arman, Upsilon Alpha '88
Mike F. Kazzie, Upsilon Alpha '86
Earl W. Stolz II, Upsilon Alpha '92
Mark S. West, Upsilon Alpha '88
Phi Alpha Chapter
Perry J. Gonella, Chi Alpha '90
Anthony G. Marino, Jr., Eta Beta '91
Raphael E. Isaac, Iota Beta '91
J. Hall Jones, Lambda Beta '91
Brian S. Keller, Mu Beta '92

Richard N. Risteen '44
Robert W. Schilling '72
Charles G. Schlichter '67
Robert N. Shogry '77
William P. Stackhouse, Jr., '53
Dennis N. Stanz '65
Richard K. Stetzer '82
Ronald L. Stief '53
John M. Sullivan II '85
John W. Taylor, Dec., Honorary
Robert G. Thomas '55
Oscar C. Tissue, Jr., '51
Walter C. Unangst '83
William A. Vernon '48
Stephen S. Waddell '78
P. Duane Walker '53
Bruce H. Whitenight '36
Daniel E. Winslow, Jr., '48
Albert B. Wrigley '55
Ralph M. Yeager '42

ETA UNIVERSITY OF ILLINOIS

\$6,572.71

Daniel E. Barbour '78

John A. Barra '71
Alvah C. Borah '32
Howard F. Brown '31
Walter S. Burns '98
Frank A. Carrera '91
David R. Claypool '64
Lawrence A. Cox '69
Raymond A. Cramer, Jr. '50
Frank A. Cronican '39
Frank W. Czaja '72
Robert S. Darke '39
Mark S. Dills '76
Howard A. Dove '59
Mark A. Dugger '88
Robert W. Eby '50
Max K. Eno '33
Robert A. Frech '49
Douglas L. Garwood '66
Arthur R. Gottschalk '49
Alfred R. Gould '50
William G. Haag '69
Arthur D. Hallstrom '68
Keith H. Hazzard '54
John L. Heckel '53
John E. Henry '64
Andrew W. Hibbel '90
Douglas K. Jackson '78
Fred S. John '50
Randall D. Johnson '74
Richard M. King '34
Norman G. Kouba '54
Frederick E. Koziol '73
Rev. Canon Knud A. Larsen '30
Donald R. Lathrop '53
Stephen A. Lawrence '79
Joseph D. Lezark '77
William W. Locke '38
Bobby G. McCormick '79
Michael D. McWilliams '71
Robert M. Mitchell '38
Richard A. Miyazaki '84
Timothy F. Moore '68
Patrick R. Murphy '62
Richard A. Naatz '50
Arthur S. Nelson '32
Brian D. Noel '77
John E. Oberhill '88
Randal C. Paniello '80
William J. Paris '87
Anthony R. Pasquinelli '56
Adam J. Pientka '51
John G. Powell '53
Donald G. Pyles '53

Paul D. Coomler '53
William L. Coorsh '78
David A. Crow '74
G. Michael Cullen II '71
Robert S. DeCoursey '88
V. Thomas DeVille '62
Scott A. Devine '97
John Doddridge '61
Don A. Doud '50
Paul D. Douglas '52
Ernest J. Fischer '48
Stephen A. Fordyce '78
William A. French '51
Richard J. Gibson '97
James W. Graves '59
Victor H. Green '49
Robert C. Griffin '50
Martin W. Grossman '62
H. Louis Gurthie '60
Thomas L. Guthrie '62
Bradley E. Hartzell '96
Albert S. Henderson '66
Charles P. Hendricks '56
Rodney K. Hendricks '84
LeRoy J. Hershberger, Honorary
Clinton Heyd III '72
Charles L. Hobbs, Jr. '41
William F. Hogan '51
Robert L. Huxtable '56
Daniel R. Johnsen '62
Daniel B. Johnson '82
Robert K. Jolls '41
James W. Jones '92
John E. Kanally '40
Richard D. Keller '65
Maurice C. Keltch '50
Val F. Kimbel III '64
Edward Marashlian '86
William F. Marks '60
Herbert J. McCave '50
Mark R. McClellan '93
John C. McLauchlan '50
David B. McMath '91
Charles F. Meinzer '87
Jimmy W. Miller '63
V. Richard Miller '63
Wally Miller '59
Milton L. Mills '31
William L. Molyneux '38
David W. Murray '65
Gerald L. Murray '66
Russell E. Patton '51
Chad T. Peck '96
George S. Peck '40

TOP TEN CHAPTERS BY NUMBER OF CONTRIBUTORS

1.	Theta (Purdue University)	103
2.	Nu (Indiana University)	91
3.	Rho (Lafayette College)	90
4.	Zeta (Penn State University)	75
5.	Beta (Cornell University)	74
6.	Eta (University of Illinois)	72
7.	Iota (Bucknell University)	66
8.	Chi Alpha (Univ. of Pgh./Greensburg)	50
9.	Lambda (University of California)	48
10.	Delta (Colgate University)	43

R. Thomas Zimmerman '31
Herbert F. Zinsmeister '44

IOTA BUCKNELL UNIVERSITY

\$20,038.50
Scott A. Alfieri '94
David C. Ballard '71
Donald P. Bean, Dec. '36
Richard C. Bean, Jr. '88
John R. Behrmann '58
William W. Bell, Jr. '50
John L. Bergen '35
Charles W. Berger '75
Joseph J. Berry '96
Anson B. Birchard '35
George F. Blades '54
Robert Bonn '37
Garland Boothe III '84
Jason L. Branker '88
Gary J. Buchmann '79
Scott L. Chesky '94
Kenneth R. Coulter, Jr. '92
George M. Craig '38
John M. D'Elisa '85
Michael J. Dominguez '91
Lionel S. Frank, Jr. '64
Mark C. Gebhardt '71
Harold H. Grey '79
Frederick W. Haelig '60
Bertram P. Haines '27
Robert C. Hardy '61
Sherman A. Herman '49
William R. Hicks '73
Daryl S. Hodgkinson '92
Edward K.

Hoffman, Jr. '68
John R. Hogan '65
Harvey P. Huber '48
Lee H. Idleman '54
James A. Kellogg '62
Stephen R. Knapp '84
Ted Kullen '57
William A. Lake III '96
Richard H. Leier '66
Thomas S. Levato '95
William A. Lindberg '79
John G. Lore '67
Robert D. Lynd '67
Paul C. Mallay '23
Anthony B. Markunas, Jr. '66
Jeffrey R. Mastracchio '91
Alexander McClinchie III '64
John V. Melick '93
Thomas H. Miller '55
Walter A. Molawka, Jr. '71
D. Kyle Morris '95
Ernest C. Mueller '39
Elmer E. Naugle '50
Angelo J. Pegno '53
Richard C. Reeve '68
Carl O. Reitz, Jr. '67
John P. Rozolis '80
Keith F. Rozolis '81
William D. Schaeffer, Jr. '70
Mark A. Sordi '94
Kenneth R. Stubenrauch '69
Edward J. Tague III '95
William W. Werther '74
John F. Whitaker '81
Jeffrey S. Whitcomb '91
William M. Winkler '70
Michael Zaparyniuk, Jr. '55

KAPPA OHIO STATE UNIVERSITY

\$1,430.00
Jack G. Boresh '50
Walter K. Boyd '45
Fred E. Eastman '52
Jon C. Emigholz '56

Thomas A. Fawcett '57
Dennis C. Fleming '68
Peter C. Gallagher '52
James R. Goodrich, Jr. '69
Kenneth E. Hoeltzel '59
Fred B. Holcomb IV '65
Harry E. Lobell '54
Alan T. Lord '72
Donald L. McDowell '57
Earl D. McMichael, Jr. '49
Robert L. Mobley '49
Donald L. Paris '39
Hans A. Schokatz '66
John C. Seitz '53
Robert M. Sherwood '34
Stephen E. Sinkey '76
Rudolph J. Tekaucic '60
Frank E. Thomas '52
Ned Vannatta '60
Paul L. Weller '35
Earl F. Williams '32

LAMBDA UNIVERSITY OF CALIFORNIA, BERKELEY

\$7,225.00
William W. Alving '33
Donald W. Anderson '49
Robert H. Anderson '62
Norbert C. Babin '56
Solon D. Barbis '52
Douglas J. Bell '64
David J. Bonelli '77
William C. Cameron '41
W. Drew Chick, Jr. '34
Bruce T. Coggins '43
Eugene F. Corbin '27
Ronald D. D'Ercole '83
Richard G. Davis '65
Hugh F. Ewing '49
Wilfred J. Fekeci '80
Lyman R. Fink, Dec. '32
Robert A. Goings, Jr. '63
Paul D. Griem, Jr. '61
Robert P. Hall, Jr. '75
Christopher Harley '74
Richard A. Hickman '46
James N. Hicks '42
William S. Hiddleston '68
Bertram C. Izant '63
Stanley P. Jones '26
Arthur F. Kirby '54
Harold P. Knopp '33
W. Harry Lange, Jr. '34
Albert W. Larsen '28
Vance D. Larsen '33
Stewart A. Lindauer '54
James W. Moon '35
William J. Morgan '62

MEMORIAL GIFTS

In memory of Perry H. Lewis, Eta '29 by Franklin J. Vernon, Eta '34
In memory of Nicholas J. Mayer, Delta '42 by his wife, Fran Mayer
In memory of Donald P. Bean, Iota '36 by his wife, Betty Bean
In memory of Brian Arena, Rho '86 by the Rho Chapter Alumni Corporation
In memory of Kenneth C. Kramer, Zeta '54 by Dr. and Mrs. Bernard H. Carson, Zeta '55
In memory of Otis B. Read, Xi '34 by his

Frederick L. Nettell '38
Robert W. Nicholson '89
Jack W. Norris '44
Paul F. Pick '39
John W. Russell '82
Ned T. Ryan '65
Michael P. Sanford '76
Guy T. Saperstein '65
William D. Sharon '67
John G. Smale '24
Christopher P. Swenson '90
Theodore R. Thompson '37
James R. Wheeler, Honorary
Allen R. Whitsitt '52

MU UNIVERSITY OF MICHIGAN

\$470.00
Earl G. Barrett '44
William E. Behringer '44
Richard D. Boynton '42
Robert L. Boynton '37
Byron C. Coats '32
James A. O. Crowe '43
Hubert W. Gouldthorpe '27
Conrad E. Holben '36
Donald Magoon '32
Harley M. Newcomb '35
Roland Savilla '40
Kenneth G. Wigle '24

NU INDIANA UNIVERSITY

\$5,620.30
Nolan W. Allen '69
James L. Babb, Jr. '62
Jeremy J. Bartfield '96
Edward S. Beach '69
Kenneth A. Beckley '62
Stephen R. Branam '69
Thomas E. Brethauer '57
Frederick M. Burgess, Honorary

Roger H. Burton '53
William P. Butz '65
George E. Cannon '67
Stephen C. Chalfie '48
James A. Chaney '71
Andrew J. Chmiel '65
Ronald G. Clark '65
James D. Clements '60
Jack L. Cooper '65
Robert T. Dingham '69
John R. Drago '48
Richard L. Edrington '68
Frank W. Elm '53
Stephen L. Ernest '70
Joseph P. Fields '50
G. Robert Ford '43
Dean Foster '42
Robert N. Fox '50
William R. Fox '55
Miles C. Gerberding '54
William M. Goodwin '61
Robert B. Grouss '55
Paul A. Hartmann '68
James E. Hertling '59
James R. Hetherington '53
Smith Higgins, Jr. '67
C. Bruce Hinton '58
Brian K. Houlihan '76
Mark A. Jones '77
Richard O. Jones '64
Allen W. Koehlinger '55
James F. Koehlinger '58
Joseph E. Kriebel '49
Lance J. Lahr '78
Lawrence K. Lahr '78
Weldon H. Leimer '60
Thomas C. Lockwood '56
Donald G. Loftus '65
Brandt L. Ludlow '69
Mark N. Lundgren '70
Duane E. Lupke '52
Mark D. McCaslin '83
Thomas V. McComb '59
Thomas M. McGlasson '65
Sean M. Mead '89
Robert A. Moynihan '69
Robert J. Musselman '61
Gary S. Nelson '74
James A. Nelson '63
James R. Oliver '89
Douglas E. Otto '72
David L. Pollert '66
Wayne C. Ponader '53
Robert B. Purdy '50
James H. Ramsey '64
Thomas A. Rather '74
Ronald L. Reinking '59
Claude T. Rich '29
Robert W. Risteen '49
Stanley C. Salomon '55
James E. Scheid '64

Robert E. Schweitzer '64
Joel P. Shappell '91
Lawrence E. Shearer '68
Jack D. Shinneman '62
George N. Silca '65
Joseph L. Skozen '36
Gordon N. Spellman '35
Edward A. Spray '63
Brian K. Stalder '94
John E. Stein '40
A. Lee Stilwell '63
Lowell L. Strawser '66
Donald E. Stroud '54
Lawrence L. Swearingen '64
Craig S. Thomson '68
Randel E. Trebing, Jr. '69
Gary L. Trent '71
T. J. Tryon, Jr. '96
Joseph A. Villagan '50
Donald K. Wemlinger '66
Gary W. Wilson '69
Richard S. Wilson, Honorary

XI COLBY COLLEGE

\$715.00
Willard E. Alexander '31
A. Lawrence Barr '63
Raymond C. Evans, Jr. '52
Howard H. Gaskill, Jr. '52
Richard D. Goodridge '44
Edward T. Kyle '36
The Very Reverend Harold F. Lemoine '32
M. Cass Lightner '51
Richard B. Mack '51
Schuyler L. Mott '51
Linwood E. Palmer, Jr. '42
George C. Putnam '34
Jan E. Raiha '79
Otis B. Read, Jr., Dec. '34
Donald Rhoades '33
Abbott E. Rice '54
Maurice F. Ronayne '51
Paul E. D. Sheldon '41
Thomas C. Staples '78
Dennis H. Ting '59
Edmund W. Underwood '76
John M. Whittier '60

OMICRON BUTLER UNIVERSITY

\$95.00
Harold W. Buckhorn '34
Donald A. Jones '33
William C. Ogden '31

PI GETTYSBURG COLLEGE

\$999.45
Charles F. Anderson '33
Dean B. Arnold '29
Brian J. Blood '70
Robert H. Boyer '60
Charles G. Cavey, Jr. '53
G. David Deardorff '63
William R. Deisinger '68
B. Donald Ellsworth '52
Russell W. Heiges '35
James M. Henderson, Jr. '55
Lawrence Johnson '51
Joseph E. Kelley III '65
Robert L. Klinedinst '47
Richard E. Lippert '53
Vincent Majkowski '65
James B. McLaughlin '66
Timothy D. McMillin '65
Edward C. Moul '49
John R. Nagle '65
Clarence E. Painter '33
John E. Parker II '68
Ivan J. Punctatz '71
William C. Pursch '60
John J. Reilly '54
Jaye R. Ryan '55
S. Donald Schlueter '46
Edmund M. Schneider '60
Kenneth F. Wohlfert '48

RHO LAFAYETTE COLLEGE

\$38,160.00
James M. Anderson '63
Brian S. Arena '97
Roger S. Austin '62
Walter C. Beamer '64
David K. Bilheimer '61
James J. Black, Jr. '69
James P. Braisted '82
Henry B. Brooks '67
Douglas S. Brown '91
Alfred A. Bruhn, Jr. '57
Cornelius J. Bruinooge '51

1995-96 Fund Drive

Total Giving

\$162,316.73

\$42,178.81 Restricted Gifts

**\$120,137.92 Unrestricted Gifts
from 1,272 Contributors**

David L. Rathgeb '73
Carl A. Reed '79
John David Reed '64
Leslie L. Reid '27
Gerald L. Robinson '85
Ruben A. Sanchez '66
Norbert J. Sargent '57
George W. Scheppach '40
Robert D. Schutt '34
Roderick H. Schutt '69
Paul C. Sisco '50
Thomas M. Skafidas '74
Herbert L. Templeton '56
Jerome W. Van Gorkom '39
Franklin J. Vernon '34
Lorin D. Whittaker '28
Stanley W. Woods, Jr. '58
William P. Zorc '80

George J. Peer '45
John E. Picken '77
Michael P. Pumilia '71
Craig S. Reber '73
Phillip J. Reber '86
Dennis M. Ring '63
William J. Rippe '65
William F. Russell '62
Tony J. Schmeltz '61
Thomas L. Scoppimire '60
Robert M. Shultz '51
C. Wayne Sloan '37
Andrew W. Smithberger '54
Robert W. Stalker '52
Philip W. Steinfeldt '71
William M. Steinfeldt '38
Bob B. Stern '54
David M. Stevens '64
Philip D. Stinson '65
Thomas M. Strohl '53
George A. Sweigart '35
Scott C. Tillman '89
T. Terry Tousey '77
Werner C. Triffshouser '56
Jeffrey W. Tucker '90
Barry E. Van Hoozen '81
Roger W. Walker '49
Arthur M. White '34
Allan L. Whitlow '69
Edward R. Williams '58
John D. Winters, Jr. '55
Donald W. Woodward '41
Kenneth W. Wysong '29

THETA PURDUE UNIVERSITY

\$25,201.38
Robert V. Adams '54
Stephen D. Arvin '85
Thomas J. Aylward '63
William F. Baker '83
J. William Benson '51
Howard G. Berger '80
Kevin E. Boyle '88
William W. Brant '55
Kenneth J. Caldwell '66
Donald S. Campbell '66
J. Gregory Carl '80
John C. Carl '51
Ralph E. Coblentz '30
Fred O. Cook '63

RESTRICTED GIFTS

NU ALPHA CHAPTER SCHOLARSHIP FUND

Andrew F. Barth, Nu Alpha '83

RHO CHAPTER ALUMNI SCHOLARSHIP FUND

Rho Chapter Alumni Corporation

COMMERFORD B. MARTIN ENGINEERING SCHOLARSHIP FUND

Mrs. Madeline Martin, Wife

IOTA BETA CHAPTER SCHOLARSHIP FUND

Dale D. Bless, Iota Beta '92

SAMUEL BRIGGS SCHOLARSHIP FUND

Phi Alpha Chapter
Shawn M. Hoke, Phi Alpha '95

HORACE E. SHACKELTON SCHOLARSHIP FUND

Scott A. Crego, Beta '86
Stuart Pergament, Beta '87
David R. May, Beta '80

RHO CHAPTER SCHOLARSHIP FUND

Rho Chapter Alumni Corporation
in memory of Brian Arena

IOTA CHAPTER SCHOLARSHIP FUND

John R. Behrmann, Iota '58

THETA CHAPTER VETERAN'S MEMORIAL SCHOLARSHIP FUND

William M. Steinfeldt, Theta '38

STEVEN MORRISON SCHOLARSHIP FUND

Brian MacNeil, Epsilon Beta '87

GORDON AND CLARE JOHNSON ANNUITY TRUST (LAW SCHOLARSHIP FUND)

Susan Johnson Willey, Daughter

ETA EDUCATIONAL FUND

Gerald L. Robinson, Eta '85

PI ALPHA CHAPTER SCHOLARSHIP FUND

Joshua M. Champion, Pi Alpha '96

RESTRICTED GIFTS

GENERAL ENDOWMENT FUND

Jerome J. Audia, Jr., Chi Alpha '93
Joseph E. Bilik, Chi Alpha '88
Randy E. Brecht, Chi Alpha '89
Robert E. Brong, Chi Alpha '92
Scott A. Byard, Chi Alpha '90
Carl E. Campbell, Chi Alpha '87
Mark R. Carrick, Chi Alpha '87
Michael R. Chizmar, Chi Alpha '88
Dale E. Crosby, Chi Alpha '89
Scott D. Dallas, Chi Alpha '89
Ronald M. DeGuffroy, Chi Alpha '88
Salvatore Destefano, Jr., Chi Alpha '91
Daniel R. Devilbiss, Chi Alpha '92
Stephen J. Donley, Chi Alpha '90
Steven D. Evans, Chi Alpha '89
Thomas D. Feight, Chi Alpha '87
Jeffrey A. Feret, Chi Alpha '89
Todd A. Fleming, Chi Alpha '90
Walter Fromm, Jr., Chi Alpha '91
Jeffrey A. Garris, Chi Alpha '90
Perry J. Gonella, Chi Alpha '90
David R. Guy, Chi Alpha '91
Michael J. Hartge, Chi Alpha '91
Perry F. Hartge, Chi Alpha '90
Michael D. Herr, Chi Alpha '92
James E. Holifield, Chi Alpha '92
Bryan J. Kaputa, Chi Alpha '87
John R. Komisary, Chi Alpha '92
Douglas J. Kukta, Chi Alpha '91
Wayne R. Lewandowski, Chi Alpha '88
Matthew L. Malin, Chi Alpha '91
Matthew E. Marsh, Chi Alpha '89
Gerald J. Marshall, Chi Alpha '90
Robert A. Maselli, Chi Alpha '92
James D. Maxfield, Chi Alpha '90
Gregory R. Maynard, Chi Alpha '88
Daniel J. Meharey, Chi Alpha '91
Ronald A. Miller, Chi Alpha '91
Matthew E. Nease, Chi Alpha '91
Shawn W. Nedley, Chi Alpha '88
Ross A. Poullet, Chi Alpha '91
Mark E. Porterfield, Chi Alpha '88
Donald A. Ravasio, Chi Alpha '89
Robert E. Salerno, Chi Alpha '92
James A. Sanders, Chi Alpha '91
Jeffery W. Schaefer, Chi Alpha '86
Ryan T. Shaffer, Chi Alpha '90
Steven W. Stawowczyk, Chi Alpha '89
Jeffery C. Testa, Chi Alpha '89
David S. Whalen, Chi Alpha '89

Lachlan W. McLean '98
William G. McLean '32
William C. McNeill '31
Christopher J. Monte '92
George R. Muth '49
Donald Muyskens '58
Jeffrey A. Nelson '89
Stephen A. Olean, Jr., '66
Stephen P. Otway '70
Gary A. Paton '63
Charles Peterson III '69
John G. Polivka '49
Robert M. Rader '68
Roland Raver '35
David M. Reed '73
Robert A. Reich '51
Rho Alumni Corporation
James H. Riefenstahl '65
Brian M. Rodowicz '96
Howard A. Rubin '77
Joseph C. Sands '80
Curtis K. Smith '67
Edwin B. Smith '75
Gregory B. Smith '80
Charles E. Snyder '29
Charles R. Solomon '62
Donald S. Straub '59
Robert B.
Thompson III '53
H. Alan Vasoli '55
Robert H. B. Wade '37
Harlow E. Waite '57
John J. Walsh '86
J. Scott Watson '78
Berkeley S. Wildman '31

Roy R. Willauer '31
James W. Williams III '80
Gerald I. Wilson '60
Justin B. Wineburgh '94
Harrison F. Wood '51
Edward O. Woolridge '52
Lucky H. G. Yaple '78
Robert F. Young '87
Charles W. Zook '30

SIGMA OREGON STATE UNIVERSITY

\$1,085.00
Myron C. Andrew '71
Richard L. Baker '65
Robert E. Blasen '33
Michael G. Crowley '88
David A. Fulton '78
George Y. Harry III '40
Gerald W. Harte '58
Everett W. Holstrom '39
Lyle T. Lindsay '47
Robert E. Loud '58
Lester O. Matthews '25
John R. McClure '50
George R. McCormick '50
Kenneth L. McGinnis '65
Alphons R. Melis '38
Gene R. Meyer '63
Harold K. Meyers '49
William C. Moller '52
Johnny L. Robbins '72
Edwin K. Robinson '55
Henry J. Rupperecht '54
Kenneth R. Sandstrom '64

Randal S. Saunders '79
Faye H. Stewart '38
Loran L. Stewart '32
John W. Stewart '59
Robert L. Swinney '58
Matthew C. Triplett '90
Joseph E. Vecera '78
John K. Watzling '54
Keith F. Young '49
Emanuel C. Zografos '50

TAU CARNEGIE MELLON UNIVERSITY

\$800.00
Adelmo Botta '34
John J. Ginsburg '91
Jonathan S. Goldick '88
Richard H. Gotwalt '33
Earle D. Moiles '37
Allen M. Montgomery '37
Dylan D. Newlander '92
Daniel C. Pavord '87
James C. Reynolds '37
Alexander R. Smith '87
Thomas A. Westover '36

UPSILON FRESNO STATE UNIVERSITY

\$90.00
Robert A. Forsblad '41
Frank W. Kinsey '52
Arleigh McConnell '42
Holger A. Selling '41

PHI UNIVERSITY OF OKLAHOMA

\$110
Ernest Z. Anderson '54
Edmund R. Kirkland '53
Thomas G. Robinson '51

CHI UNIVERSITY OF FLORIDA

\$65
Joseph A. Myers '52

PSI LYCOMING COLLEGE

\$1,291.13
Larry A. Armor '65
David M. Bliley '62
Christopher Christie '65
Brian C. Churchill '82
Stephen E.
DePalantino, Jr., '94
James F.
Edgeworth, Sr., '56
William H. Gallagher '57
Edward J. Genthner III '71
Corey T. Hnat '95
Robert G. Jamieson '69
Luke H. Kauffman '62
Thomas R. Kruger '87
Steph M. Leighton '77
Roger B. Ludlum '53
Jay H. McCormick '60
Kenneth G.
McDaniel, Jr., '60
Bruce A. McNally '63
Franklin W. Noll III '89
Edward J. G. Novakoski '94

Dave Pearson '68
Wade W. Pugh '57
E. Bard Rupp '58
James G. Scott '70
Richard F. Shue '91
George F. Staib '57
C. Alan Stephan '57
James T. Wolyniec '60

OMEGA INDIANA UNIVERSITY OF PENNSYLVANIA

\$1,125.00
James E. Ake '61
Kevin C. Anderson '79
Harry L. Barton '61
Ronald E. Baughman '55
David G. Bird '59
Domenic V. Calabro '65
John J. Colpo, Jr., '71
Frank Farina '61
H. Milton Fry '63
Robert L. Gitt '72
Guyton F.
Giannotta, Jr., '72
Keith A. Graham '92
James E. Lore '76
Louis J. Martarano '73
Jeffrey E. Meek '68
Patrick B. Mikesell '62
Robert A. Pohle '62
John C. Rose III '92
John M. Sakorian '73
Paul M. Steckel '66
Stephen J. Steranchak '65
Robert J. Stevens '87

Charles Sztvich '61
John D. Varner '57
Stephen P. Wareham '61
Harvey M. Weitzel '65
Bruce A. Young '89
Michael T. Zappone '70

ALPHA ALPHA LOCK HAVEN UNIVERSITY OF PENNSYLVANIA

\$930
Travis S. Bicher '90
Edward L. Bowes '63
Richard DeBernardo, Jr., '75
Lewis F. Frain '64
Richard L. Funk '59
Patrick G. Hawbaker '91
Gregory W. Kitchen '71
Stephen B. Morley '58
Alexander Morris IV '68
James P. Murphy '59
John T. Nolan '97
Michael L. Peters '91
John P. Rech '71
Gene E. Rexford '62
Dennis L. Ritchey, Jr., '89
Lawrence J. Schubert '72
Larry T. Shervanick '72
Dale T. Sphar '63
Donald W. Wagner '66

BETA ALPHA C. W. POST COLLEGE

\$405
Arthur T. Boinay '62
Thomas L. Cassese '67
James M. Harlow '62
Frank W. Harris '65
Richard T. Hennessy '65
Peter G. Hoyt '62
Frank S. Ioppolo '63
John J. Zureck '63
Charles H. Zwicker,
Honorary

Eugene A. Susi, Jr. '90

THETA ALPHA SLIPPERY ROCK UNIVERSITY OF PENNSYLVANIA

\$105
Matthew A. Heromin '92
Donald E. Myers '83
Mark A. Thomas '84
Steven L. Tingley '94
Douglas G. Zelnor '84

IOTA ALPHA UNIVERSITY OF PITTSBURGH AT JOHNSTOWN

\$254
Barre P. Bell '88
John P.
Gundermann, Jr., '84
Sean S. Moran '83
Frank M. Palazzolo '95
Clayton J. Stahl '84
David V. Trapani '84
Brian J. Winters '88

KAPPA ALPHA ILLINOIS STATE UNIVERSITY

\$60
Douglas E. Goss '85
Lee E. Williams '71

LAMBDA ALPHA GANNON UNIVERSITY

\$250
Richard M. Andre '91
Mark W. Bettwy '91
Russell S. Griffiths '93
Anthony R. Kelly '89
Ronald T. Kubeja '84
Wesley D. Meyer '90
Patrick M.
Settemire '87

TOP TEN CHAPTERS BY CONTRIBUTIONS

(Includes both restricted and unrestricted gifts)

1.	Rho (Lafayette College)	\$38,160.00
2.	Theta (Purdue University)	25,201.38
3.	Iota (Bucknell University)	20,038.50
4.	Beta (Cornell University)	9,166.00
5.	Nu Alpha (Columbia University)	7,361.00
6.	Alpha (Middlebury College)	7,313.00
7.	Lambda (University of California)	7,225.00
8.	Zeta (Penn State University)	7,052.62
9.	Eta (University of Illinois)	6,572.71
10.	Nu (Indiana University)	5,620.30

GAMMA ALPHA BRADLEY UNIVERSITY

\$495
Richard K. Creasy '75
Francis C. Furman '77
Charles A. Green '79
David L. McLuckie '71
Wallace Paprocki,
Honorary
Christophher Paxson '83
Daniel I. Rovner '71
Steven Schilson '65
Daniel J. Susina '73
Douglas C. Swanson '65
Gregory A. Wiczorek '73

EPSILON ALPHA LEWIS UNIVERSITY

\$75
Randall H. Fleck '75
David E. Kristin '71
Dennis J. Turner '75

ETA ALPHA ROBERT MORRIS COLLEGE

\$308
Mark P. Brula '89
Peter E. Gundillo '94
Luke M. Jacobs '87
Gary J. Norris '92
Ronald R. Ramer, Jr., '95
Steven M. Scanlon '94
Bradley K. Shoff '87
Gregory Suran '92

MU ALPHA WEST VIRGINIA UNIVERSITY

\$150
William Speary III '93
Gary P. Williams '87

NU ALPHA COLUMBIA UNIVERSITY

\$7,361
Joseph J. Adipietro '87
Andrew F. Barth '83
Jason J. Chai '83
Jonathan P. Katz '88
Corey D. Klestadt '86
Everton L. Lopez '84
Richard C. Oh, Esq., '83
Sascha M. Retaillieu '92
Stephen D. Savas '87
John C. Sciarra '86

XI ALPHA TEMPLE UNIVERSITY

\$35
Neil D. Larrimore '92

OMICRON ALPHA RUTGERS UNIVERSITY

\$525
James R. Balog '94
David K. Bernstein '88
Charles J. Citro '87
Alan A. Dolnick '89
Robert H. Dolnick '86

David T. Clark '68
Ronald G. Clark, Jr., '97
Murray G. Clay '30
James A. Coggagna '77
Charles A. Corson, Sr., '29
Roswell W. Corwin '25
Russell V. Davis '64
Thomas R. Dougherty '65
John A. Falcone '60
Dana V. Ferraris '94
Marc J. Gallagher '93
Richard J. Gant '76
S. Scott Gates '91
Charles J. Gatt, Jr., '85
Richard A. Gay '54
Walter B. Gilmour '39
Fred C. Guest '59
Walter Hartl '49
Peter T. Holran '87
David P. Hourigan '75
Robert B. Howard '42
Arthur B. Hube '42
David R. Hughes, Esq., '69
Harvey H. Humerberg '48
Ray C. Hunt, Jr., '53
Andrew P. Kail '91
Eugene B. Kelsey '79
Donald N. Kirkpatrick '32
Richard D. Kline '61
Joseph F. Koegler '54
Arthur Kontura '59
Henry A. Lee '51
James D. Levi '59
John C. Ludlum '35
Scott B. McCausland '91
Breslin W. McKnight '44

Kevin S. Gill '93
 Brian C. Hughes '92
 Patrick M. Keating '91
 Erik J. Kent '92
 Michael J. Kiernan '86
 Stephen M. Levine '88
 Cliff R. Mure '85
 Frank P. Nardi '89
 Douglas L. Obetz '86
 Dana F. Rubin '89
 Jay A. Smith '85
 David M. E. Solot '95
 William M. Whetstone '89

**PI ALPHA
 UNIVERSITY OF TOLEDO**
 \$655
 Matthew R. Armstead '95
 Brian K. Bachtel '88
 James D. Badowski '94
 Eric D. Barbe '87
 Joshua M. Champion '96
 Paul A. Emerson '97
 Brian K. Gorbey '89
 Christopher A. Hupe '91
 Jerald Katcher '89
 Anbu Lingappan '92
 Michael A. Meffie III '87
 Brad A. Nieset '93
 Gregg A. Peppel '94
 Albert O. Rahal '91
 James C. Ramicone '88
 Douglas M. Rammel '90
 Chadwick A. Rupp '94

**RHO ALPHA
 BRYANT COLLEGE**
 \$130
 Keith R. DiCarlo '86
 Bradford H. Gouzie '89
 Stuart W. Johnson '86
 Dean B. Rissolo '89
 Michael A. White '91

**SIGMA ALPHA
 HOFSTRA UNIVERSITY**
 \$100
 Thomas A. Fiore '87

**TAU ALPHA
 RADFORD UNIVERSITY**
 \$380
 Shawn E. Davis '88
 Stefan S. Dedes '95
 Henry T. Goode '96
 Andrew P. Hale '91
 Kevin G. Jackson '89
 Donald E. Lorton, Jr., '87
 Christopher B. Miller '97
 Eric D. Padgett '86
 Liam M. Pelot '93

Daniel E. J.
 Talmage, Jr., '88
 Matthew F. Thompson '87
 Douglas T. Vogel '96
 Edward K. Ward '95
 Robert T. Wilson '91

**UPSILON ALPHA
 PARKS COLLEGE
 OF ST. LOUIS**
 \$600
 Christopher P. Arman '88
 Troy W. Fey '91
 Mark A. Freestone '88
 Michael R. Helbig '93
 Peter P. Hogan '92
 Mike F. Kazzie '86
 Kyriakos Michael '94
 Jose P. Romero '92
 Michael D. Schelonka '91
 Paul F. Stevens '88
 Earl W. Stolz II '92
 Mark S. West '88

**PHI ALPHA
 CLARION UNIVERSITY
 OF PENNSYLVANIA**
 \$435
 Brian D. Breth '87
 Shawn M. Hoke '95
 Ryan H. Loberg '88
 Todd R. Marciniak '95
 Kenneth G. McCurdy '93
 Michael S. O'Neill '97
 Michael J. Opal '89
 Phi Alpha Chapter

**CHI ALPHA
 UNIVERSITY OF PITTSBURGH
 AT GREENSBURG**
 \$2,328.81
 Jerome J. Audia, Jr., '93
 Joseph E. Bilik '88
 Randy E. Brecht '89
 Robert E. Brong '92
 Scott A. Byard '90
 Carl E. Campbell '87
 Mark R. Carrick '87
 Michael R. Chizmar '88
 Dale E. Crosby '89
 Scott D. Dallas '89
 Ronald M. DeGuffroy '88
 Salvatore Destefano, Jr., '91
 Daniel R. Devibiss '92
 Stephen J. Donley '90
 Steven D. Evans '89
 Thomas D. Feight '87
 Jeffrey A. Feret '89
 Todd A. Fleming '90
 Walter Fromm, Jr., '91

Jeffrey A. Garris '90
 Perry J. Gonella '90
 David R. Guy '91
 Michael J. Hartge '91
 Perry F. Hartge '90
 Michael D. Herr '92
 James E. Hollifield '92
 Bryan J. Kaputa '87
 John R. Komisary '92
 Douglas J. Kukta '91
 Wayne R. Lewandowski '88
 Matthew L. Malin '91
 Matthew E. Marsh '89
 Gerald J. Marshall '90
 Robert A. Maselli '92
 James D. Maxfield '90
 Gregory R. Maynard '88
 Daniel J. Meharey '91
 Ronald A. Miller '91
 Matthew E. Nease '91
 Shawn W. Nedley '88
 Ross A. Poullet '91
 Mark E. Porterfield '88
 Donald A. Ravasio '89
 Robert E. Salerno '92
 James A. Sanders '91
 Jeffery W. Schaefer '86
 Ryan T. Shafer '90
 Steven W. Stawowczyk '89
 Jeffery C. Testa '89
 David S. Whalen '89

**PSI ALPHA
 BEHREND COLLEGE**
 \$90
 David A. Graves, Jr., '89
 Michael A. Merbach '90
 Eric J. Pine '95

**OMEGA ALPHA
 VIRGINIA COMMONWEALTH
 UNIVERSITY**
 \$155
 John W. Bozicevic '90
 Jackson H. Miller '89
 Benjamin E. Skowysz '97
 Benjamin K. Smith '97
 Timothy A. Smith '92

**ALPHA BETA
 UNIVERSITY OF DELAWARE**
 \$308
 William R. Coffman '95
 Marc B. Davis '91
 Christopher T.
 Kauffman '88
 Anthony J. Lupinetti '94
 Thomas R. Masino '91
 John C. Pennington '91
 Scott M. Smaniotto '93
 Joshua L. Smith '93

**BETA BETA
 BALL STATE UNIVERSITY**
 \$110
 Robert A. Becker '93
 James D. Jones '95
 William T. Shermer II '92
 Jeffrey L. Strycker '89

**GAMMA BETA
 VIRGINIA POLYTECHNIC
 INSTITUTE**
 \$170
 Sean L. Bohl '89
 Richard K. Degen '90
 Manuel J. Fernandez '89
 Eric M. Focht '90
 P. Andrew Leynes '91

**DELTA BETA - WEST LIBERTY
 STATE COLLEGE**
 \$35
 Steven W. Lewis '96

**EPSILON BETA
 OLD DOMINION UNIVERSITY**
 \$515
 Nicholas Colatella '91
 John E. Drake '93
 Robert D. Garrett, Jr., '91
 Jerry L. Hudson, Jr., '92
 Karl T. Keller '92
 Kenneth J. Lowenstein '89
 Gerald D. Luken '91
 Brian H. MacNeil '87
 Mills H. March '91
 Ronald A. Marsh '95
 James D. Mowry '91
 Brian M. Nolan '89
 Clifton L. Parker IV '90
 Mark N. Sandler '89
 Raymond H. Springsteen '92
 Paul L. Striedl '90
 Scott D. Sutton '90

**ZETA BETA
 TARLETON STATE UNIVERSITY**
 \$100
 William V. Gillentine, Jr., '91
 Christopher K. Gordon '95
 Kyle L. Kimery '92

**ETA BETA
 WEST CHESTER UNIVERSITY**
 \$185
 Howard A. Fidler '92
 Brian L. Grove '95
 Anthony G. Marino, Jr., '91
 Michael T. Pomponio '92

**THETA BETA
 NEW YORK INSTITUTE
 OF TECHNOLOGY**
 \$170
 Douglas P. Barna, Honorary

Kai U. Gebhard '91
 Antonio G. Pena '91
 Richard R. Sudderth '89
**IOTA BETA
 ROCHESTER INSTITUTE
 OF TECHNOLOGY**
 \$460
 Noel T. Aird '91
 Dale D. Bless '92
 Keith J. Bona '92
 James M. Donahue '91
 Raphael E. Isaac '91
 Alok K. Kapoor '93
 Steven C. Rapids '91
 Edward E. Smith III '93
 Peter C. Stoffel '94
 Brian J. Stumm '92

**KAPPA BETA
 EDINBORO UNIVERSITY**
 \$55
 Edward P. Harper '92

**LAMBDA BETA
 JAMES MADISON UNIVERSITY**
 \$289
 Scott A. Clarke '91
 J. Hall Jones '91
 Richard L. McCoy, Jr., '92
 Robert C. Neal '91

**MU BETA
 SYRACUSE UNIVERSITY**
 \$335
 John M. Arnold '92
 Alan M. Gutman '95
 Christopher B.
 Kaczmarek '93
 Brian S. Keller '92
 Mark J. Krukonis '93
 Michael C. Markiewicz '93
 Jason S. Montague '92
 Christopher J. Rottkamp '92

**XI BETA
 UNIVERSITY OF PITTSBURGH**
 \$80
 Michael J. Bennett '94
 Timothy A. Schrag '93
 Joseph A. Webber '93

**OMICRON BETA
 WILLIAM PATTERSON COLLEGE**
 \$50
 Joel DeStaso '94
 Michael J. Ostermueller '96

**PI BETA
 RICHARD STOCKTON
 COLLEGE OF NEW JERSEY**
 \$225
 John L. Carboni '93
 Cory P. Cuomo '92
 William E. Dixon IV '95
 James F. Flores '94

**Honor
 Super
 Omnia**
 Jason A. Gross '93
 Ian O. Lauer '96
 James P. Welch '93

**RHO BETA
 EASTERN ILLINOIS
 UNIVERSITY**
 \$95
 Michael J. Garrity '98
 Kevin J. Koontz '94
 Jamie C. Motejzik '97
 Brian A. Zimmer '93

**SIGMA BETA
 UNIVERSITY OF NORTH
 CAROLINA AT GREENSBORO**
 \$40
 Christopher D. Pace '94
 Hakim A. Srour '94

**TAU BETA
 EASTERN TENNESSEE
 STATE UNIVERSITY**
 \$115
 Brian W. Bender '97
 Michael W. Rogers '94
 Thomas B. Tomlin '97

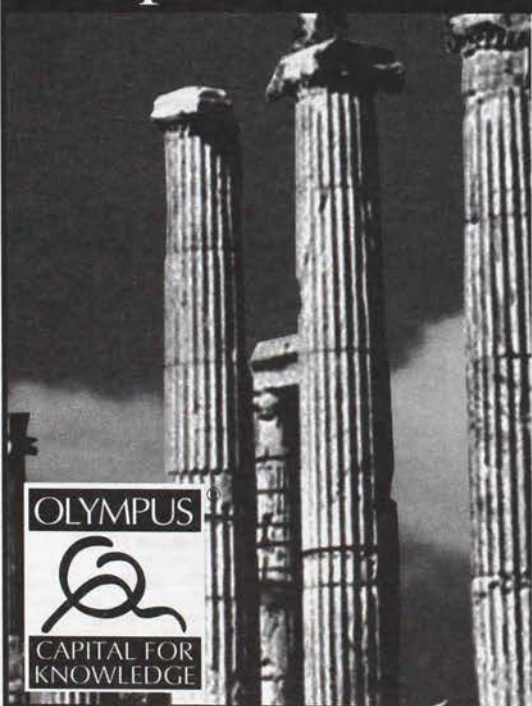
**PHI BETA
 COLLEGE OF WILLIAM
 AND MARY**
 \$25
 Darren S. Tucker '95

**CHI BETA
 UNIVERSITY OF
 CHARLESTON**
 \$90
 Bill E. Day III '97
 Jonathan R. Strickland '96

**PSI BETA
 EAST STROUDSBURG
 UNIVERSITY**
 \$85
 Ryan M. Ofcharsky, Pledge
 Michael P. Ritter '95
 Brian P. Weida, Pledge

ADDITIONAL CONTRIBUTIONS
 Glenn Gnirrep
 Anonymous
 The Oregon Community
 Foundation

Keep Your Education From Going to Ruins



Olympus Capital for KnowledgeSM provides the financial building blocks for Kappa Delta Rho brothers, alumni, and family to get an education.

OlympusSM offers Kappa Delta Rho Brothers:

- Up to \$25,000 annually
- Money to cover the cost of education-related expenses (i.e. books, fees, and chapter dues)
- No application fee
- Loan checks within one week of approval
- \$3,000 for a personal computer

With one 5 minute phone call to Olympus, you can be pre-approved for the Olympus loan program for yourself or any other relative of a Kappa Delta Rho brother—any time of the year!

Call Olympus today to build your education.

1-800-544-2099

and ask for ext. 102.



National Directory

GRAND CHAPTER NATIONAL BOARD OF DIRECTORS

President • (1998)

James F. Edgeworth, Sr., Psi '56
2800 Pleasant Hill Road
Maumee, OH 32537

Executive Vice President

William J. Paris, Eta '87
331 S. Main Street
Greensburg, PA 15601

Vice President/Standards and Risk Management • (1998)

William L. Nichol, Zeta '59
P.O. Box 534
Alloway, NJ 08001

Vice President/Finance • (2000)

Edward B. Curtis, Rho 62
125 Roboda Boulevard
Royersford, PA 19468

Vice President/Education • (2000)

Mark N. Lundgren, Nu '70
1100 Drexel Avenue
Dexel Hill, PA 19026

Secretary • (2000)

Gerald L. Murray, Theta '66
6600 S. Overlook Drive
Daleville, IN 47334

Treasurer • (1998)

John E. Parker II, Pi '68
5 Crooked Pond Road
Hilton Head, SC 29926

Director/Insurance Programs • (2000)

J. Hall Jones
1746 Westover Avenue
Petersburg, VA 23805

Director/Chairman, Long Range Planning Task Force • (2000)

Douglas M. Rammel, Pi Alpha '90
3887 Bushnell Road
Cleveland, OH 44118-3141

Director/Chairman, Alpha Task Force • (1998)

Mark S. West, Upsilon Alpha '88
2220 N. Village Drive
Saint Charles, MO 63303-5181

Director/Chairman, Constitution Committee • (1998)

Joshua L. Smith, Alpha Beta '93
519 Graham Place
Bloomington, IN 47401

Director • (2000)

Robert L. Swinney, Sigma '58
423 Golf Course Drive
Leonia, NJ 07605-1415

Director • (1998)

David K. Bernstein, Omicron Alpha '88
19 Patterson Street
Norfolk, VA 23508

Director • (1998)

Ryan B. Hall, Eta '97
1110 South Second Street
Champaign, IL 61820

Director • (1998)

David D. Cardone, Psi Alpha '98
209 Weaver Drive
Glenshaw, PA 15116

Director • (1998)

Christopher B. Miller, Tau Alpha '97
1013 Grove Avenue, Apt. T
Radford, VA 24141

DIRECTORS EMERITUS

Robert D. Corrie, Beta '53
10 Ash Street
Garden City, NY 11530

Robert D. Lynd, Iota '67
9011 Swan Avenue
Millers Island, MD 21219

KAPPA DELTA RHO FOUNDATION

TRUSTEES

President

Paul A. Downes, Gamma '69
RR 3, Box 121
Moravia, NY 13118-9521

Vice President/Investments and Secretary

Ray C. Hunt, Jr., Rho '53
107 Reynard Drive
Charlottesville, VA 22901

Vice President/Annual Campaign

Andrew W. Hibbel, Eta '90
1218 S. Allen Street #19
State College, PA 16801

Treasurer

Robert D. Corrie, Beta '53
10 Ash Street
Garden City, NY 11530

Directors

George J. Peer, Theta '45
95 Springpine Lane
Savannah, GA 31411

Andrew F. Barth, Nu Alpha '83
1730 Windsor Road
San Marino, CA 91108

INVESTMENT COMMITTEE

Chairman

Ray C. Hunt, Jr., Rho '53
107 Reynard Drive
Charlottesville, VA 22901

Members

Robert P. Youngman, Alpha '64
1130 Park Avenue
New York, NY 10128

Robert D. Corrie, Beta '53
10 Ash Street
Garden City, NY 11530

Andrew F. Barth, Nu Alpha '83
1730 Windsor Road
San Marino, CA 91108

William J. Paris, Eta '87
331 South Main Street
Greensburg, PA 15601

SCHOLARSHIP COMMITTEE

Chairman

John David Reed, Ph.D., Eta '64
1044 West. Hayes
Charleston, IL 61920

Members

Thomas L. Guthrie, Theta '62
8817 Gateview Drive
Fort Wayne, IN 46835-8825

Alan T. Lord, Kappa '72
406 E. Truman Avenue
Bowling Green, OH 43402

LAW SCHOLARSHIP

Paul W. Upson, Alpha '66
28 Sherborne Road
Lexington, MA 02173

ORDO HONORUM COMMITTEE

Chairman

John E. Booth, Zeta '51

Members

John S. Goodreds, Delta '56
Loran L. Stewart, Sigma '32
John A. Falcone, Rho '60
Claude T. Rich, Nu '29
Gordon R. Stanley, Delta '59

ORDER OF THE PEREGRINE FALCON COMMITTEE

Chairman

Daniel LaPlaca, Beta '96
G-0066, Box 8705
Williamsburg, VA 23187-8705

NATIONAL HEADQUARTERS STAFF

Executive Director/Editor

William J. Paris, Eta '87
331 South Main Street
Greensburg, PA 15601

Director of Chapter Services/Expansion

Shawn M. Hoke, Phi Alpha '95

Chapter Leadership Consultant
Joshua M. Champion, Pi Alpha '96
Douglas T. Vogel, Tau Alpha '96

Director of Chapter Accounts

Suzanne Balash

Director of Alumni Affairs

Peg Zimmerman

Administrative Support

Mary Lou McLaughlin

CHAPTERS

ALPHA (Inactive)

Middlebury College
Middlebury, VT 05753

BETA

Cornell University
Ithaca, NY 14850

GAMMA (Inactive)

S.U.N.Y.
Albany, NY 12200

DELTA

Colgate University
Hamilton, NY 13346

EPSILON

Franklin College
Franklin, IN 46131

ZETA

Penn State University
University Park, PA 16802

ETA

University of Illinois
Champaign, IL 61820

THETA

Purdue University
West Lafayette, IN 46906

IOTA

Bucknell University
Lewisburg, PA 17837

KAPPA (Inactive)

Ohio State University
Columbus, OH 43200

LAMBDA

University of California
Berkeley, CA 94704

MU (Inactive)

University of Michigan
Ann Arbor, MI 48104

NU

Indiana University
Bloomington, IN 47401

XI (Inactive)

Colby College
Waterville, ME 04900

OMICRON (Inactive)

Butler University
Indianapolis, IN 46200

PI (Inactive)

Gettysburg College
Gettysburg, PA 17325

RHO

Lafayette College
Easton, PA 18042

SIGMA (Inactive)

Oregon State University
Corvallis, OR 97330

TAU

Carnegie Mellon
University
Pittsburgh, PA 15213

UPSILON (Inactive)

Fresno State University
Fresno, CA 93700

PHI (Inactive)

University of Oklahoma
Norman, OK 73069

CHI COLONY (Inactive)

University of Florida
Gainesville, FL 32601

PSI

Lycorning College
Williamsport, PA 17701

OMEGA

Indiana University of PA
Indiana, PA 15701

ALPHA ALPHA

Lock Haven University
Lock Haven, PA 17745

BETA ALPHA (Inactive)

C. W. Post College
Greenville, NY 11548

GAMMA ALPHA (Inactive)

Bradley University
Peoria, IL 61600

DELTA ALPHA (Inactive)

Rhode Island State University
Providence, RI 02900

EPSILON ALPHA (Inactive)

Lewis University
Lockport, IL 60441

ZETA ALPHA (Inactive)

University of Dayton
Dayton, OH 45400

ETA ALPHA

Robert Morris College
Coraopolis, PA 15108

THETA ALPHA

Slippery Rock University
Slippery Rock, PA 16057

IOTA ALPHA

University of Pittsburgh/Johnstown
Johnstown, PA 15907

KAPPA ALPHA (Inactive)

Illinois State University
Normal, IL 61761

LAMBDA ALPHA

Gannon University
Erie, PA 16507

MU ALPHA (Provisional)

West Virginia University
Morgantown, WV 26505

NU ALPHA

Columbia University
New York, NY 10025

XI ALPHA

Temple University
Philadelphia, PA 19107

OMICRON ALPHA

Rutgers University
New Brunswick, NJ 08903

PI ALPHA

University of Toledo
Toledo, OH 43608

RHO ALPHA (Inactive)

Bryant College
Smithfield, RI 02917

SIGMA ALPHA (Inactive)

Hofstra University
Hempstead, NY 11551

TAU ALPHA

Radford University
Radford, VA 24141

UPSILON ALPHA

Parks College of St. Louis
Cahokia, IL 62206

PHI ALPHA

Clarion University
Clarion, PA 16214

CHI ALPHA (Inactive)

University of Pittsburgh/Greensburg
Greensburg, PA 15601

PSI ALPHA

Behrend College
Erie, PA 16510

OMEGA ALPHA (Inactive)

Virginia Commonwealth Univ.
Richmond, VA 23220

ALPHA BETA

University of Delaware
Newark, DE 19717

BETA BETA

Ball State University
Muncie, IN 47303

GAMMA BETA (Inactive)

Virginia Tech
Blacksburg, VA 24060

DELTA BETA

West Liberty University
West Liberty, WV 26074

EPSILON BETA

Old Dominion University
Norfolk, VA 23508

ZETA BETA

Tarleton State University
Stephenville, TX 76402

ETA BETA

West Chester University
West Chester, PA 19380

THETA BETA

NY Institute of Technology
Central Islip, NY 11722

IOTA BETA

Rochester Institute of Technology
Rochester, NY 14623

KAPPA BETA

Edinboro University
Edinboro, PA 16412

LAMBDA BETA

James Madison University
Harrisonburg, VA 22807

MU BETA

Syracuse University
Syracuse, NY 13210

NU BETA (Inactive)

Fordham University
Bronx, NY 10458

XI BETA (Inactive)

University of Pittsburgh
Pittsburgh, PA 15213

OMICRON BETA

William Paterson University
Wayne, NJ 07070

PI BETA

Richard Stockton College
Pomona, NJ 08240

RHO BETA (Inactive)

Eastern Illinois University
Charleston, IL 61920

SIGMA BETA

University of NC/Greensboro
Greensboro, NC 27413

TAU BETA

Eastern Tennessee
State University
Johnson City, TN 37614

UPSILON BETA

Clemson University
Clemson, SC 29632

PHI BETA

The College of William and Mary
Williamsburg, VA 23186

CHI BETA

University of Charleston
Charleston, WV 25304

PSI BETA

East Stroudsburg University
East Stroudsburg, PA 18301

PROVISIONAL CHAPTER

University of North Carolina/Asheville
Asheville, NC 28804

RUSH RECOMMENDATION FORM

ALUMNI CAN HELP our chapters to increase their number of quality members by letting the National Fraternity know of an incoming student to a college or university who would be a good candidate for membership. If you know of anyone, please fill out this form and send it to Shawn Hoke, Kappa Delta Rho, Inc. National Headquarters, 331 South Main Street, Greensburg, PA 15601.

Submitted by (include chapter and year) _____



Prospective's name _____

Home address _____

Phone number _____

Prospective's college and local school address _____

Academic status _____

Does prospective have a KDR relative? _____

ATTENTION PARENTS

**Does your son have
a new address?**

**Please help us stay up to
date. Send or fax this box
with any new information
so that no fraternity
event happens without
his knowledge.**

Name of Brother

**School and
Year of Graduation**

Old Address

New Address



Mike Howard (Mu Alpha '84) and
family visit the National Headquarters

**Please send responses to:
Kappa Delta Rho, Inc.
331 South Main Street
Greensburg, PA 15601**

Fax Number: 412.838.7101

Culinary Delight

Scott Vadney, a founder of Iota Beta '91 (Rochester Institute of Technology), won the Grande Plaque (highest overall score) for his entries in the First Annual Community Health Plan (CHP) Healthy Challenge for Restaurants.

Schenectady County Community College hosted this American Culinary Federation (ACF) sanctioned contest on March 18, 1996.



Welcome New Board

The National Fraternity is pleased to welcome several new members to the board of directors. We are confident that the skills and experience these dedicated brothers bring to the board will guide Kappa Delta Rho on a steady course toward the future.

Ed CURTIS A 1962 graduate of the Rho Chapter at Lafayette College, Ed has been the President of the Rho alumni corporation for several years. During his career, Ed served as comptroller for several companies in the Philadelphia area and is presently self-employed with Curtis and Associates.

Robert SWINNEY A 1958 graduate of the Sigma Chapter at Oregon State University, Bob spent his career with Colgate-Palmolive Co. He retired as vice president of operations for Colgate U.S. in 1990.

ORDO continued from p.8

Facilities Committee, vice president of the Athletic Hall of Fame Committee, and a member of both the High School Design Committee and the School District Centennial Committee.

Brother Kiser was a member of the Rho Chapter at Lafayette College where he served as the house manager and served on the Rho Alumni Corporation's board of directors from 1978 to 1987.

Michael A. McCarthy, Beta '57

Brother Michael A. McCarthy received his Bachelor of Architecture degree from Cornell University in 1956. He went on to receive his Master's of Architecture degree from the Harvard University Graduate School of Design.

He began work with Skidmore, Owings & Merrill, a leading architecture firm in 1964 and was elected Partner in 1973. Brother

McCarthy has designed a wide variety of buildings around the globe. His clients included the Chase Manhattan Bank, Texaco, General Electric, General Motors, and J.P. Morgan. His work includes additions to the Dulles International Airport, Columbia-Presbyterian Medical Center, St. Luke's/Roosevelt Hospital Center, and the renovation of the Harvard Square subway station in Cambridge, Mass. He is also responsible for the design of Manhattan's only mosque, the Islamic Cultural Center.

Brother McCarthy served as advisor on the Art Committee of the Chase Manhattan Bank and is a member of the Advisory Council at Cornell University's College of Architecture, Art and Planning. He is a life member of the Albright-Knox Art Gallery in Buffalo; and the founder of the Patron Endowment Fund in honor of Susan C. McCarthy.

David BERNSTEIN David is a 1988 graduate of the Omicron Alpha Chapter at Rutgers University. David is an attorney in Northern New Jersey and has been active in the Omicron Alpha Alumni.

Mark WEST Mark is a 1988 graduate of the Upsilon Alpha Chapter at Parks College - Saint Louis University. Mark is a financial analyst with McDonnell Douglas Corporation in Saint Louis. He served for several years as president of his chapter's alumni corporation and also served the National Fraternity as a regional senator in the Midwest.

Ryan HALL Ryan is an undergraduate member of the fraternity at the Eta Chapter at the University of Illinois. Ryan currently serves as consul of the Eta Chapter.

David CARDONE David, an undergraduate member of the fraternity at the Psi Alpha Chapter at Penn State Behrend College, is currently serving

his chapter as its junior tribune.

Chris MILLER Chris is an undergraduate member of the fraternity at the Tau Alpha Chapter at Radford University. He served his chapter as consul and senior tribune and is currently serving as president of the Interfraternity Council.

The National Fraternity is grateful to the service and contributions made by the outgoing members of the board of directors. Through their efforts, Kappa Delta Rho is a stronger organization.

Our thanks go to: Tom McGlasson, Nu Chapter, Indiana University, class of 1965; Scott Racek, Iota Chapter, Bucknell University, class of 1991; John Taylor, Zeta Chapter, Penn State University, class of 1958; John Kienzie, Nu Chapter, Indiana University, class of 1995; Darren Tucker, Phi Beta Chapter, College of William and Mary, class of 1995; and Eric Larsen, Eta Beta Chapter, Westchester University, class of 1995.



**Kappa Delta Rho, Inc.
National Headquarters
331 South Main Street
Greensburg, PA 15601**

forwarding and return postage guaranteed
address correction requested

**NON PROFIT ORGANIZATION
US POSTAGE PAID
PERMIT # 1715
PITTSBURGH, PA 15290**