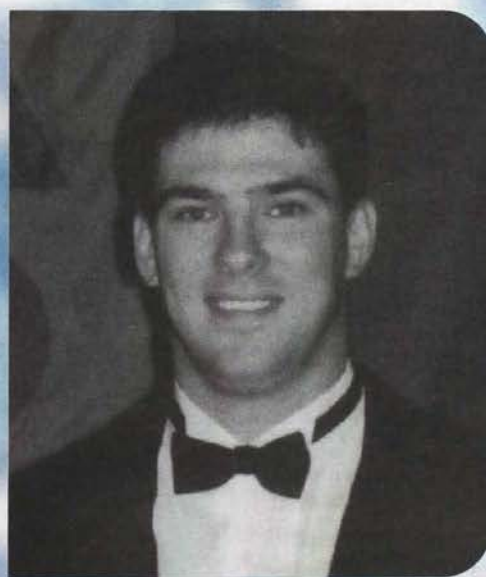
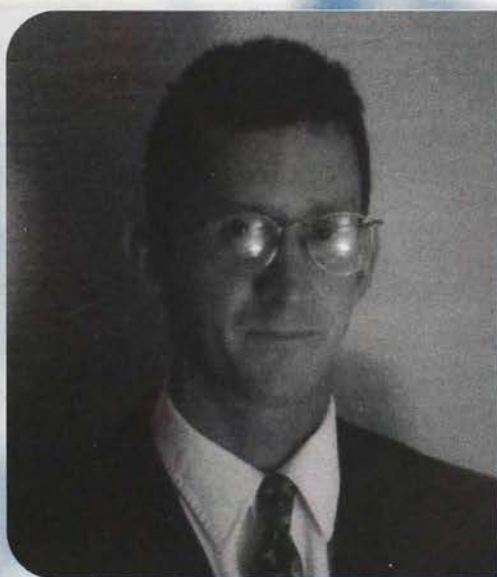


Quill & Scroll

FALL/WINTER 1997

THE MAGAZINE OF KAPPA DELTA RHO

A Changing of the Guard



Message From the President

Changing Roles and Expanding Our Future

I am pleased to report to you on the state of our Fraternity.

New Executive Director Announced

At the Fraternity's recent Leadership School and Convention, I announced on behalf of the board of directors the appointment of Shawn M. Hoke, Phi Alpha Chapter '95, Clarion University, as the new executive director for the National Fraternity. Shawn began work for the National Fraternity in December 1995. He later became director of chapter services and then, director of expansion and communication. Shawn's appointment will be discussed in this issue. (See story on page 1.)

Bill Paris Retained by Foundation

I am also pleased to announce that the trustees of the Kappa Delta Rho Foundation have finalized arrangements to retain former executive director Bill Paris, Eta Chapter '87, University of Illinois, as chief administrator in charge of all aspects of foundation operations, with a specific focus on gift planning and development. (See story on page 6.)

Board Elects President-Elect

The board of directors for the National Fraternity took a bold step in creating a new position in the National Fraternity. I had informed the board of my intention not to run for another term on the board. I advised, however, that I would be willing to be elected president for my final year. As I had served as president for the past nine years, I feel that a transition with the new president would be beneficial. After a discussion of possibilities, the board decided on the creation of the position of "President-Elect."

I am pleased to report that Robert L. Swinney, Sigma Chapter '58, Oregon State University, has been elected to the position. The board anticipates electing Bob as president of the National Fraternity at the August 1998 board of directors meeting.

Alpha Resolution

As stated in the last few issues of the *Quill & Scroll*, the National Fraternity has been evaluating a response to the situation at Middlebury College involving our former Alpha Chapter. Following a very lengthy discussion at the recent Convention meeting, the delegates voted in favor of a resolution authorizing the board to enter into a licensing agreement with the local group at Middlebury. This agreement creates an association between the National Fraternity and the local co-ed group.

Although further details follow in this issue, I must compliment the delegates on the responsible and mature manner in which the debate of this topic was handled. Its orderly resolution is of great importance to the fraternity.

Other Convention News

The Convention meeting addressed a number of significant items of legislation, including proposed revisions to the ritual and to the Constitution of the National Fraternity. The revisions, discussed later, are designed to strengthen the administrative structure of the National Fraternity, as it is reflected in the daily operations of its chapters.

Financial Results

The fiscal year that ended June 30, 1997, was a challenging year financially for the National Fraternity. Returning chapter membership—based on the initial billing last fall—was below expectations. We, in fact, believe that this has been the "bottom" year for returning membership. Recruitment during the course of the year has been flat. However, we should see an increase in returning numbers for this fall.

Despite the weakness in the initial returning numbers, the National Fraternity acted to improve its financial position by continuing its program to reduce outstanding debts. Although the low returning numbers did leave cash flow very tight for the year, the consolida-

tion and closure of five chapters allowed the fraternity to charge \$20,000 to bad debt, which led to an operating loss for the fiscal year. (See complete financial report on page.)

In Summary

Enormous changes are taking place within KDR and we are positioning ourselves for a strong and successful future. By separating and delegating the responsibilities of the fraternity and the foundation to Shawn Hoke and Bill Paris respectively, we place the foundation—and ultimately the fraternity—on the threshold of taking action on things that the fraternity has previously only talked about.

The board and I are vigilantly watching developments within the Greek World and on campuses with our chapters to see how changes may affect the future of KDR. Initiatives such as substance-free housing are common topics of discussion, at both the National Interfraternity Conference level, and in the board room of Kappa Delta Rho.

There is an excitement among the members of the board, the trustees of the foundation and many other volunteers at the national level about the prospects of KDR over the next few years. I believe we are well-positioned to see a level of progress never before seen in our organization's history. I encourage you to become involved and become a part of the future of KDR.

Fraternally,

James F. Edgeworth, Sr., Psi '56
President

From the New Executive Director

Greetings From Greensburg, Pennsylvania!

As many of you are well aware by now, this summer has been one of significant change for the National Fraternity of Kappa Delta Rho. As a product of that change, I feel that a brief introduction is in order.

My name is Shawn Hoke, I am a 1995 graduate of Clarion University of Pennsylvania, and I am your new executive director. I began my association with Kappa Delta Rho when I pledged the Phi Alpha Chapter in the spring of 1992.

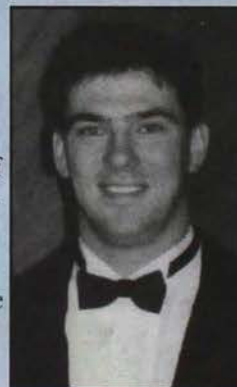
During the course of my undergraduate membership I served my chapter as junior tribune, consul, and scholarship chairman.

Like most of you, the memories of my undergraduate experience are some of my most treasured. It was that experience that prompted me to seek employment with

the National Fraternity.

On December 16, 1995, I received my bachelor's degree in communication from Clarion University. On December 17, 1995, I packed all of my worldly belongings into my Ford Festiva (a sad statement I know) and moved to Greensburg, Pennsylvania.

On December 18, 1995, I started working for the



Shawn Hoke

Quill & Scroll

Contents

National News	1
Convention 1997	2
Middlebury Resolved	4
Ordo Honorium	5
Chapter Eternal	5
Foundation News	6
Gifts of Stock	7
National Directory	13
KDR Joins FRMT, LTD	14

Quill and Scroll (USPS 605-402), an educational journal, is published two times a year by Kappa Delta Rho, Inc., 331 South Main Street, Greensburg, PA 15601. Forward all correspondence, manuscripts, and changes to the National headquarters.



DESIGN • Adam Logan Fulrath • OA '94
EXECUTIVE DIRECTOR • Shawn M. Hoke • PHI ALPHA '95

EDITOR Paul A. Downes, GAMMA '68 • CONTRIBUTING EDITOR Carole Otyпка

CORRECTIONS In the Spring/Summer 1997 issue of the *Quill and Scroll*, the Zeta Beta Chapter at Tarleton State University was incorrectly listed as 'inactive' in the National Directory. We apologize for any confusion this oversight caused.

National Fraternity of Kappa Delta Rho as a leadership consultant.

During my time on staff I've seen a lot of this great country, met countless numbers of alumni and undergraduates, studied the operations of Kappa Delta Rho on the national and chapter level from every angle, and have had more "titles" than I can remember. Through it all, I have tried to stay focused on improving Kappa Delta Rho so that future members can look back on their undergraduate fraternity experience with the same fondness that I now have.

In my dedication I am not alone. This fraternity is fortunate to have such a hard-working office staff, dedicated men serving on the National Fraternity's board of directors and the foundation's board of trustees, and the other committed alumni volunteers, too numerous to mention, but whose help is also greatly appreciated.

As the National Fraternity seeks to implement programs that will help strengthen Kappa Delta Rho, we need the continued support of you, the alumni.

Whether you choose to

support the fraternity financially, through contributions to the Kappa Delta Rho Foundation, and/or with your time and talents, by serving as a chapter advisor or a national committee member, the choice is yours. The important thing is that you choose to support your fraternity so that Kappa Delta Rho can continue to make a difference in the lives of young men for generations to come.

Fraternally,
Shawn M. Hoke
Executive
Director



National News

Financial Report

THE YEAR BEGAN WITH RETURNING CHAPTER membership at 19 percent below projections. The immediate effect of this low rate of return is a reduction of revenue from this source.

At the May board meeting, the board of directors voted to close five chapters of the fraternity. Two of these chapters, West Virginia University and West Liberty State College, had voluntarily tendered their charters as a result of low membership and an inability to continue. Three others—New York Institute of Technology, Gannon University, and East Tennessee State University—were experiencing extremely low membership and serious financial difficulty. Each of the chapters had been assisted, without success, by the National Fraternity over the past two years. Ultimately the board concluded that closure was the only viable course. As a result of the closings of these five chapters, the board took a charge of \$20,000 against bad debt. By taking this expense charge, the National Fraternity showed an operating loss of \$10,922 for the fiscal year.

Although closure of these chapters has reduced the number of chapters considered "critically weak," there are a few more that merit great concern. The fraternity should be in a better position to focus its efforts on the remaining chapters in need of assistance. The recent institution of a revised fee-payment policy should bring about greater control over the collection process and produce greater financial strength in the current, and future, fiscal years.

Joshua Champion, staff consultant, advised the headquarters that he had been offered an opportunity with the Phoenix Police Department. We were supportive of his pursuing this opportunity and upon his departure on December 1, 1996, we made the decision not to fill his position immediately. —Edward B. Curtis, Rho '62, Treasurer

Hoke Appointed Executive Director

THE SEARCH COMMITTEE AND THE NATIONAL Fraternity board of directors are pleased to announce that Shawn M. Hoke, Phi Alpha '95, Clarion University, has been appointed the new executive director for the National Fraternity.

Following the resignation of Bill Paris as executive director of the National Fraternity in March, the board of directors

(continued on next page)

appointed a search committee to locate candidates for the position. The board appointed past national president Robert D. Lynd, Iota '64 as Chairman of the Search Committee as well as Directors, Doug Rammel, Pi Alpha '90, and Mark West, Upsilon Alpha '88, and foundation representatives, Paul Downes, Gamma '68, and Bob Corrie, Beta '53. In April, a mailing went out to all alumni members seeking interested applicants.

Although numerous resumé's were received, it would not be possible to have a new executive director in place by Mr. Paris' original stated date of resignation. The board felt that to ensure a good transition, they would approach Mr. Paris to stay an additional two months. Mr. Paris agreed and the search continued and was narrowed to three candidates. The search committee met with each of the three candidates.

Following the announcement of Brother Hoke as the new executive director, National President James F. Edgeworth said, "We are very pleased to have Shawn on board as executive director for the National Fraternity. During his years on staff, he has shown himself to have a great understanding of Kappa Delta Rho, as well as the Greek community. He has a great understanding of the needs of our chapters and their members."

Shawn graduated from Clarion University with a degree in communications. He began working for the fraternity as a leadership consultant immediately upon his graduation. He then became director of chapter services and most recently served as director of expansion and communication.

Under the new arrangements with the foundation, Shawn will assume direct responsibility for all aspects of fraternity operations.

On a more personal note, Shawn is engaged to Rayna Leigey and they will be married in June 1998. They will make their home in Greensburg, Pennsylvania, where the fraternity headquarters is located.

(National News continues on page 6)

CONVENTION 1997

Awards and Highlights From Norfolk

The following are the highlights of the major convention legislative items addressed. *(Items marked by an asterisk are available upon written request.)*

1. The audited financial report for the National Fraternity was presented.*
2. Proposed revisions to the Constitution for the National Fraternity were presented. These revisions were extensive and were designed to address a number of areas requiring strengthening within the National Constitution. A copy of the revised final document is available.*
3. Proposed Ritual revisions were discussed and enacted. The revisions were designed to address two primary areas of concern within the Ritual of the fraternity. First, there were issues of the denominationulism of the religious aspects of the Ritual. It was felt that the religious emphasis should be maintained, although the language should be "non-denominationalized."

Further, any language which could be misconstrued as authorizing, advocating, supporting, or encouraging any type of behavior which could be construed as hazing was removed or rewritten. Because of the secret nature of the Ritual, copies of the revised document are not available.

4. The Alpha Task Force presented a proposed resolution to the situation with the former Alpha Chapter at Middlebury College. As published in a separate article in this issue, a resolution was adopted by the Convention assembly authorizing the board of the National Fraternity to enter into the proposed licensing agreement. *(Please see page 4)*

The proposed licensing agreement in its entirety was made available to all delegates at the Convention meeting. Copies of the licensing agreement are available from the national headquarters upon written request.*

The director of insurance programs for the National Fraternity reported that the board of directors authorized the National Fraternity to buy into a captive offshore reinsurance company called FRMT, LTD.

FRMT, LTD. is a captive reinsurance

company formed by approximately 20 national Greek organizations for the purpose of stabilizing their insurance program costs. The board met with representatives of FRMT, LTD. over the last year. Proposals were reviewed and considered and ultimately the board of directors determined that it was in the best long-term interest of Kappa Delta Rho to become a member of FRMT, LTD. As a result, over the course of the next three years, the fraternity will make its' capital contributions and membership joining contributions to FRMT, LTD. Once these are paid, they will not need to be paid again. Further, from now on the fraternity's Risk Management and Insurance Programs will be through FRMT, LTD. from here on out.

If you are interested in receiving details of these convention highlights please send a written request to the National headquarters.



Ferd Ensinger (Alpha '44) giving the The Ordo keynote speech.

Outstanding Senior Award

Jeff Dorio, Eta Beta
(West Chester University)

Each year, the five members of the awards selection committee choose the senior who best exemplifies the ideal KDR brother. Jeff Dorio was this year's winner. Jeff has held several positions in his chapter including consul, propaetor, junior tribune, social chairman, and interfraternity representative. He also served as the President of Order of Omega and was a member of both Pi Gamma Mu and Gamma Sigma Alpha.



TOP: Attendees of this year's convention. ABOVE: Jason Lear, Dustin Chappell, Ben Willis, Jerod Stewart, and Matt Sandlin from Zeta Beta chapter display their awards. RIGHT: Several workshops were held for the undergraduates. Presenters included Katherine Ross and Ed Leonard (Theta '62). INSET: Brian Vladovich accepts an award from James Edgeworth on behalf of the Eta chapter.

CONVENTION AWARDS

Dr. Harold Osborn Award Intramural Sports

Psi Alpha (Behrend College)

Donald C. Wolf Award Outstanding Newsletter

Beta (Cornell University)

John L. Blakely Award Philanthropy

Iota (Bucknell University)

Gino A. Ratti Award Alumni Relations

Eta (University of Illinois)

Outstanding Senior Award

Jeff Dorio, Eta Beta
(West Chester University)

Outstanding New Member Award

John Lucksinger, Zeta Beta
(Tarleton State University)

E. Mayor Maloney Award Faculty Relations

Beta (Cornell University)

George E. Shaw Award Public Relations

Alpha Beta
(University of Delaware)

Leo T. Wolford Award Campus Involvement

Alpha Beta
(University of Delaware)

George E. Kimball Award Community Involvement

Zeta Beta
(Tarleton State University)

Executive Director Award Outstanding Recruitment

Delta (Colgate University)

Executive Director Award Most Improved Recruitment

Delta (Colgate University)

Floyd R. Baughman Award Chapter of Achievement

Zeta Beta
(Tarleton State University)

O.D. Roberts Award Most Improved Chapter

Alpha Beta
(University of Delaware)

William I. Myers Award Scholastic Achievement

Iota (Bucknell University)

National Staff Award Risk Management

Eta Beta
(West Chester University)

Outstanding Chapter Advisor

Dr. Robert Marbach, Eta Beta
(West Chester University)

Executive Director Awards

Excellence in Recruitment

Theta Alpha
(Slippery Rock University)

Eta Beta
(West Chester University)

Theta (Purdue University)

Eta (University of Illinois)

Rho (Lafayette College)

Beta (Cornell University)

Zeta (Penn State University)

Iota (Bucknell University)

Alpha Beta
(University of Delaware)

Zeta Beta
(Tarleton State University)

Grand Consul Award
Outstanding Chapter

Beta (Cornell University)

Outstanding Alumnus Award
John Dempsey,
Upsilon Alpha '90
(St. Louis University)

KAPPA DELTA RHO FOUNDATION 1996-97 NATIONAL SCHOLARSHIP WINNERS

NATIONAL SCHOLARSHIPS

\$400
O. D. ROBERTS
MEMORIAL SCHOLARSHIP
Bradley, A. Windbigler, Pi
Alpha '98

\$400
ROBERT D. LYND
SCHOLARSHIP
Craig A. Frederick, Alpha Beta
'98

\$400
E. MAYER MALONEY
MEMORIAL SCHOLARSHIP
Joshua J. Stapleton,
Tau Alpha '98

\$400
HORACE E. SHACKELTON
MEMORIAL SCHOLARSHIP
Michael J. Higley, Beta '98

\$400
PAST RECIPIENTS
SCHOLARSHIP
Kevin P. Sullivan, Eta Beta '99

CHAPTER SCHOLARSHIPS

\$400
BETA CHAPTER
SCHOLARSHIP
Michael J. Higley, Beta '98

\$400
ETA CHAPTER SCHOLARSHIP
Michael J. McGinnis, Eta '99

\$400
THETA CHAPTER
SCHOLARSHIP
Cary W. McClelland, Theta '99

\$500
THETA CHAPTER VETERAN'S
MEMORIAL SCHOLARSHIP
Cary W. McClelland,
Theta '99

\$500
JOHN C. CARL THETA
CHAPTER SCHOLARSHIP
Cary W. McClelland, Theta '99

\$1500
IOTA CHAPTER SCHOLARSHIP
Ian P. Fitzgerald, Iota '98

\$400
LAMBDA CHAPTER
SCHOLARSHIP
Gregory S. Shea, Lambda '99
\$400
RHO CHAPTER SCHOLARSHIP
Colin H. Lautz, Rho '98

\$4940 each
RHO CHAPTER ALUMNI
SCHOLARSHIP
Stephan Cesarini, Rho '99
Colin H. Lautz, Rho '98
James G. Buckler, Rho '98
Seth M. Marlatt, Rho '98
Jeffrey J. Lavolpicelo, Rho '98

SPECIFIED SCHOLARSHIPS

\$1,000
COMMERFORD B. MARTIN
MEMORIAL ENGINEERING
SCHOLARSHIP
Colin H. Lautz, Rho '98

\$500
COMMERFORD B. MARTIN

MEMORIAL ENGINEERING
SCHOLARSHIP
Stephan Cesarini, Rho '99

\$500
ELMON M. WILLIAMS
MEMORIAL
M. B. A. SCHOLARSHIP
Christopher J. Epperson,
Zeta '90

\$1,000
GORDON JOHNSON
MEMORIAL LAW
SCHOLARSHIP
Paul A. Konstanty, Chi Beta '97

\$900
GORDON JOHNSON
MEMORIAL LAW
SCHOLARSHIP
John M. LaRosa,
Alpha Beta '96 (second year)

\$800
GORDON JOHNSON
MEMORIAL LAW
SCHOLARSHIP
Darren S. Tucker,
Phi Beta '95 (third year)

LOOKING TO HIRE LEADERSHIP CONSULTANTS

THE NATIONAL FRATERNITY HAS BUDGETED to hire two leadership consultants during the 1997-98 school year. The first is scheduled to be hired in December 1997, and the second in June 1998. Each consultant will be assigned to chapters within a specific geographic region. They will be responsible for conducting visitations with the chapters, as well as assisting in planning and organizing of the Regional Conclaves and the Williams Leadership Academy. The National Fraternity sees this as a very important step in providing increased services to our undergraduate members.

CONVENTION INTERN THANKS

THE NATIONAL FRATERNITY WOULD LIKE TO thank Adam Purcell, Omega '98, for all his hard work and dedication. He interned with the National Office for the month of August and assisted with organizing and running the National Convention and Williams Leadership Academy.

CHAPTER FINDS A NEW HOME

THIS PAST AUGUST, THE UPSILON ALPHA Chapter moved from the Parks campus of St. Louis University to the Frost campus. A new state-of-the-art building has been erected to house the new Parks College of Engineering and Aviation at the Frost campus. The Upsilon Alpha Chapter became an active member of the Frost IFC two years ago and it is expected that the chapter will continue the successful tradition that began on the Parks campus.

LEGACIES

Brian M. Kaminski, Delta '96
Kevin M. Kaminski, Iota '95, Brother

Dustin W. Chappell, Zeta Beta '98
Mark W. Hodges, Zeta Beta '96, Uncle

Corey L. Hodges, Zeta Beta '98
Mark W. Hodges, Zeta Beta '96, Uncle

Sean F. Welsh, Rho '99
Timothy J. Bozack, Rho '98, Cousin

Matthew R. Whitley, Rho '99
Mark R. Whitley, Rho '70, Father

Middlebury Resolved

At the Convention meeting of the National Fraternity in Norfolk, Virginia, the delegates approved a resolution directing the board of directors for the National Fraternity to enter into a licensing agreement with the "Kappa Delta Rho Society," a local co-ed organization on the campus of Middlebury College. This action effectively created an association between the National Fraternity of Kappa Delta Rho and the Kappa Delta Rho Society at Middlebury College.

As you have seen in the last few issues of the *Quill & Scroll*, in 1990 the trustees of Middlebury College mandated that all fraternal organizations become co-ed social organizations or cease to exist. No organization could remain single-sex male, nor could students remain affiliated as members of an active chapter of a national organization which was single-sex male. The members of the Alpha Chapter of Kappa Delta Rho Fraternity made a very difficult decision to survive and became co-ed to do so. As a result of their decision, the National Fraternity disaffiliated the Alpha Chapter from the National Fraternity.

Between 1990 and 1993 the National Fraternity took little action. National adopted this stance in order to watch and wait to see what developments would occur on the Middlebury campus. More specifically, the fraternity waited to see whether the actions of the trustees would actually take root. During those

years, lawsuits were filed by other national fraternal organizations against the college. Those national organizations did not succeed.

At the Convention meeting in August 1994, the delegates at the convention passed a resolution directing the board of directors for the National Fraternity to appoint a task force to examine all possible

resolutions to the situation involving the former Alpha Chapter. Hence, the Alpha Task Force was born.

For the past three years, the Alpha Task Force—made up of both undergraduate and alumni representatives—has met with undergraduates and alumni of the fraternity, members of the local co-ed group, and alumni of Alpha Chapter. Initially, the task force approached the

Alpha Chapter Alumni Corporation and the local members of the co-ed group to see whether the requests for affiliation with the National Fraternity were legitimate. The Alpha Alumni

Corporation was represented at the 1995 Convention meeting where they presented a formal petition for recognition by national.

Since it was clear that the National Fraternity did not intend to go co-ed and that the local group could not become solely male, the only logical compromise was to create a licensing agreement between two separate organizations.

It is important to note that not everyone in the fraternity or within the local co-ed group

felt that the compromise was the best solution. However, a strong majority agreed with the resolution.

Once the concept of the licensing agreement was adopted by the local group and by the national board, the board asked the Alpha Task Force to take the information to individual chapters to get further input. As a result, representatives of the task force attended three of the five spring conclaves, and met with most of the chapters' representatives for discussions and input. In addition, the last edition of the *Quill & Scroll* actively sought the input of alumni. Numerous responses were received, reflecting opinions both in favor and opposed.

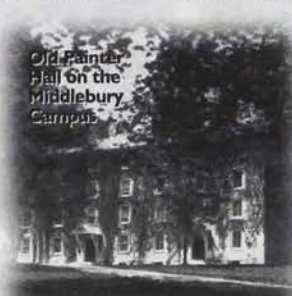
The task force brought a final report to the board at their May meeting. The board, although solely empowered to make a decision regarding the licensing agreement, chose to ask the Alpha Task Force to make a presentation to seek a resolution.

The task force chairman, Mark West, presented their recommendations to the Convention and the assembly adopted a resolution.

In accordance with the resolution adopted by the Convention meeting, the board of directors for the National Fraternity voted to approve the licensing agreement and authorized the executive director to sign on behalf of the fraternity this fall.

The fraternity recognizes that either decision would have left some members dissatisfied. However, we are confident that the input of all members of Kappa Delta Rho was solicited over the past three years. We feel the process was both thorough and fair.

We can all be proud of the responsible and progressive way in which the delegates conducted the discussion of a topic so controversial and vital to the future of Kappa Delta Rho.



Old Painter Hall on the Middlebury Campus

Due to space constraints, anyone wishing a copy of the resolution should contact Peg Zimmerman at the office of the National headquarters.

ORDO HONORIUM

John R. Padget Beta '58

Brother John R. Padget received his Bachelor of Science and master's degrees from Cornell University, where he was a member of the Beta Chapter. He received his MBA from Harvard University.

From 1962 to 1978, John worked for Tenneco, Inc. holding various positions. In 1974, he became president of Walker Europe, Inc., a subsidiary of Tenneco, and in 1978 he became senior vice president of Technicon Corporation. Today Brother Padget is the owner of Padget Associates, B.V., an Amsterdam-based firm specializing in new company startups, venture capital financing and corporate finance and consulting.

Presently, Brother Padget is a member of the board of directors, American Chamber of Commerce in the Netherlands and is the vice-president European Council of American Chambers of Commerce. Brother Padget is the past chairman and member of the board of governors, Harvard Business School Club of the Netherlands.

Brother Padget is a Knight in the Order of Orange-Nassau bestowed by Her Majesty Queen Beatrix of the Netherlands. He has also received an honorary degree of



Doctor of Laws from the University of Rochester. During his time at the Beta Chapter, Brother Padget served as Consul and from 1965 to 1969 Brother Padget served as president of the

National Fraternity of Kappa Delta Rho.

Edwin C. Leonard, Jr. Theta '62

Brother Edwin C. Leonard, Jr. graduated from Purdue University in 1962 with a Bachelor of Science Degree in agricultural economics. He returned to Purdue University in 1966 to receive his master's and a Doctorate in educational administration.

Brother Leonard has spent the past 31 years as a professor of business administration in the School of Business and Management Sciences at the Indiana University-Purdue University, Fort Wayne. He has also served as the chairperson for the Department of Management and Marketing during his career at IU Purdue Fort Wayne. During that time he was responsible for the integration of the faculty of the Division of General and Technical Studies and the corresponding program (a two-year associates degree) into the Department of Management



Sciences. He is the acting chairperson of the Department of School of Public and Environmental Affairs. Brother Leonard currently serves as the director of Continuing Education and manager of the Northeast Extension Region. Brother Leonard has also published dozens of titles in the field of business administration and human resource management education.

"Ed" or "Doc," as his friends refer to him, is also involved in the League for the Blind and Disabled,

Northeast Indiana Division of the March of Dimes/Birth Defects Foundation, and the American Legion. During his undergraduate career he served in almost every position within his chapter.

Glenn C. Toepert (Theta Alpha '86)

Brother Glenn C. Toepert graduated magna cum laude from Slippery Rock University with a Bachelor of Science degree and proceeded with his education at the Bergen County Police Academy to graduate as a New Jersey certified police officer in 1988.

Brother Toepert is currently employed at the Saddle Brook (NJ) Police Department as a field training officer. He received his training at the Northwestern University Traffic Institute. Brother Toepert has also held such positions as assistant 911



coordinator, administrative/operations assistant, grant project coordinator, lead DARE (Drug Abuse Resistance Education) Instructor, in-house computer administrator, Community Services Bureau, TAC officer (Terminal Agency Coordinator), Juvenile Officer, Presidential Protection Detail, and patrolman.

Some of Brother Toepert's community service efforts include CASA (Citizens Against Substance Abuse Organization), Special Olympics, Bergen County Safety Subcommittee on Missing, Abused, and Exploited children, Child Abuse/Prevention seminar, Township Enhanced 9-1-1 Education Program, and "Operation Buckle Up!"

Brother Toepert was an active executive board member during his undergraduate career as well as vice president of the IFC and IFC representative to the Student Health Advisory Board. Additionally, he was the first Theta Alpha Alumni Corporation president.

Brother Toepert's honors and recognition did not end with his undergraduate career, but led to receiving rewards of higher recognition such as the 1997 New Jersey

Jaycees Top Outstanding Young Citizens of New Jersey, and the 1995 Veterans of Foreign Wars Outstanding Law Enforcement Officer.

Chapter Eternal

ALPHA

Francis Ives '27
Hudson, MA
John L. Rice '40
Potomac, MD

BETA

Dr. Erling S. Owre '42
Houston, TX

DELTA

Robert L. Bishop '44
DeLancey, NY
Larry J. Carroll '67
Stafford, VA
J. Edward Tompkins '36
Kernersville, NC
Louis C. Wayman, Jr., '49
Kingsville, MD

EPSILON

George H. Fagan '31
Indianapolis, IN

George Elliott French '31
Englewood, CO
Noble B. Waggener '25
Indianapolis, IN

ZETA

Melvin Brooks '85
Philadelphia, PA
Reese Davis, Sr., '36
Chincilla, PA
W. E. Feldman '28
Largo, FL
William R. McCalister '31
Davis, IL
Lavern R. Merritt '53
Lake Ariel, PA
John E. Miller '75
Littleton, CO
William Pfahl III '39
Lancaster, PA

ETA

C. Norman Flanders '31
Tucson, AZ

Ralph E. Siemon '37
Albuquerque, NM

THETA

Paul L. Rhoades '32
Barberton, OH
Algernon C. Swisher '28
Austin, TX

KAPPA

Helmuth William
Engelman '41
Columbus, OH

LAMBDA

Dennis A. Jones '82
Stockton, CA
Marc D. O'Rourke '77
Woodside, CA
Thomas R. Patten '42
Lakeport, CA

NU

Gary L. Trent '71
Fort Wayne, IN

XI

Robert Crespi '63
Santa Cruz, CA
Dr. John W. Strong '52
Ottawa, Canada

OMICRON

Wright C. Cotton '33
Scottsdale, AZ

PI

Arthur L. Allewelt '36
Chattanooga, TN
Paul E. Anspach '28
Lancaster, PA
Ernest R. Krajcik '54
Stratford, CT

SIGMA

Robert H. Andrew '49
(Ordo Honorium)
Wilsonville, OR
Christopher T.
Christensen '60
Corvallis, OR
Robert F. Hall '70
Salem, OR

Ernest L. Wagner '40
Klamath Falls, OR
Charles A. Welton '36
Portland, OR

TAU

Jack W. Spatz '36
Exton, PA

UPSILON

Gilbert Velasquez '52
Ventura, CA

PHI

Harland A. Carter, Jr. '50
(Chapter Founder)
Olympia, WA

PSI

Joseph A. Fabian '63
Upper Marlboro, MD

ZETA BETA

Jacob B. Sandlin 2000
Killeen, TX

Kappa Delta Rho Foundation

Letter from The President

Once again, the Kappa Delta Rho Foundation, Inc., had a very successful year. The 1996-97 Annual Campaign ended on June 30, 1997, with total contributions of \$227,428.57, a 40 percent increase over the 1995-96 campaign amount of \$162,316.73. Unrestricted contributions increased 25 percent from \$120,137.92 to \$150,240.09. Restricted contributions increased an amazing 83 percent from \$42,178.81 to \$77,188.48. The number of contributors, however, decreased from 1,272 to 1,111. We are grateful for this support of our foundation scholarship and leadership programs.

Trustees Andrew F. Barth (Nu Alpha '83), Robert D. Corrie (Beta '53), Andrew W. Hibel (Eta '90), Ray C. Hunt, Jr. (Rho '53), and George J. Peer (Theta '45), have given wise counsel to all of our foundation activities. They will also help guide our foundation to 2005 and the Centennial Celebration. Kappa Delta Rho is very fortunate to have volunteer trustees who, daily, exemplify honor and integrity, the hallmark of our brotherhood.

This year we are particularly grateful to John C. Carl (Theta '51), who funded a \$10,000 endowment to establish the William F. Hogan, Jr. Memorial Scholarship for the Theta Chapter. At the 1997 Annual Foundation meeting, we elected Brother Carl to a three-year term as a foundation trustee. We are also grateful to President Edward Curtis and the Board of Governors of the Rho Chapter Alumni Corporation who contributed an additional \$24,000 to supplement the Rho Chapter Scholarship Fund Endowment.

The trustees appreciate the counsel and guidance of William J. Paris (Eta '87) whose efforts help promote the Annual Campaign, planned giving, and alumni dinners and receptions.

FRATERNALLY, PAUL A. DOWNES, PRESIDENT (Gamma '68)

Paris Appointed Director of Gift Planning and Development

The Trustees of the Kappa Delta Rho Foundation are pleased to announce that they have retained the services of William J. Paris, Eta '87, as the director of gift planning and development of the Kappa Delta Rho Foundation. Bill has spent the last four years as executive director of the National Fraternity and executive director of the Kappa Delta Rho Foundation. His new position will separate out the responsibilities of administering the Kappa Delta Rho Foundation and allow him to focus solely on Foundation concerns. More specifically, this restructuring of duties will allow Mr. Paris to focus on brother development of the annual fund, as well as planned giving and capital gifts.

According to Paul Downes, Gamma '68, president of the foundation. "We are extremely excited that Bill has agreed to remain as the chief administrator for the KDR Foundation. This is the first time in the history of the KDR Foundation and the KDR Fraternity that the responsibilities of running the foundation have been handled by a separate administrator, apart from the executive director of the fraternity."

"In the past four years, Bill has proven himself to be an outstanding fundraiser and development officer for the foundation. Just allocating part of his time toward foundation duties, he has increased the annual fund from \$56,000 a year to over \$150,000 a year.

In addition, the endowment has increased from approximately \$200,000 to nearly \$600,000 in that same period."

Bill has agreed to a three-year contract with the Foundation as its' director of gift planning and development. He will handle all development, annual fund, administration, and other administrative functions. In addition, he will be working out of an office in his home.

The Kappa Delta Rho Foundation is a Pennsylvania not-for-profit corporation founded in 1984. It is recognized by the Internal Revenue Service as a charitable educational organization. Since it was formed in 1984, the foundation has provided educational grant support to the National Fraternity in excess of \$700,000. In addition, it has awarded nearly \$100,000 in academic scholarships to undergraduate members of the fraternity. The foundation is a public foundation supported by contributions from members of Kappa Delta Rho and their families.

The new position of the director of gift planning and development for the foundation is a grant-funded position made possible by a gift commitment from an individual alumnus. According to Paul Downes, "the trustees and I firmly believe that the future of Kappa Delta Rho lies in the development of significant endowments to fund the fraternity's educational programs. The only way to achieve these endowments is through an individual whose primary focus is fundraising. Our alumnus benefactor, who is funding this program, agrees with the sentiment of the trustees. Further, he strongly feels, as we do, that we have the right man at the right time."



Bill Paris



Q: How Can I Make A Planned Gift to the Foundation?

A: Two common ways our brothers are making plans for the future of our fraternity involve life insurance and bequests in their wills.

You may have an old, paid-up life insurance policy that you no longer need. If this is the case, you may name the foundation as the beneficiary of the policy, or, you can give the policy to the Kappa Delta Rho Foundation and receive a current charitable tax deduction for the cash value of the policy.

You might also have a life insurance policy provided by your employer. You could choose to name the foundation as the beneficiary for all or part of the proceeds of the policy.

A very common way to plan for the future is to have a Will. This document,

generally drafted by your attorney, provides instructions on what happens to your assets should something happen to you. You may wish to include the foundation as a beneficiary in your will. A bequest can take many forms; such as a specific dollar amount or a percentage of your total estate, or perhaps a gift of securities or real estate. If you are considering a gift, it is recommended that you consult your attorney or financial advisor. The following wording is suggested. "I hereby give to the Kappa Delta Rho Foundation, a Pennsylvania Corporation, the sum of \$_____ to be used for the general educational purposes of the foundation as the trustees may direct." Gifts to the foundation are deductible for estate tax purposes. It is an excellent way to provide for our fraternity's future.

Please direct questions and requests for any further information to Bill Paris at (888) 243-6357.



The Kappa Delta Rho Foundation

Investing in the Lives of Students

1984 saw the establishment of the Kappa Delta Rho Foundation. Its purpose . . . to support educational programs and provide scholarships as an **investment** in the lives of individual undergraduate KDR's.

Your donation matters! Since 1984, generous alumni support enabled the Foundation to invest over \$500,000 in the lives of undergraduate KDR's through support of the fraternity's educational programs. In addition, the Foundation awarded nearly **\$60,000** in scholarships to deserving KDR's.

A **donation** to the Kappa Delta Rho Foundation is an **investment** in the lives of student brothers of **our** fraternity!

Please consider joining the over **thirteen hundred** brothers who make tax deductible contributions to the Foundation each year.

Your support **does matter!** Together, we are **making a difference!**



The Kappa Delta Rho Foundation

Investing in the Lives of Students

I want to make a difference! I enclose my tax-deductible contribution of:
____(\$15) ____(\$25) ____(\$50) ____(\$75) ____ (other)

Please make your check payable to the Kappa Delta Rho Foundation or you can charge your donation to your Visa or Mastercard.

Card number _____ Expiration date _____

____ Visa or Mastercard (circle one)

Signature _____

____ My employer will match my contribution, my matching gifts form is enclosed!

To ensure proper credit, please complete the following:

Mr. _____

Chapter _____ Graduation Year _____

Street _____

City _____ State _____ Zip _____

____ Note if new address

Company _____

Position _____

____ I have included the Kappa Delta Rho Foundation in my estate plans.

____ I would like more information about gifts of property, stock, or other types of planned gifts to the Kappa Delta Rho Foundation.

Annual Fund — Special Recognition Clubs

FOUNDER'S SOCIETY:

Grand Patron	\$10,000 and higher
Patron	\$5,000 - 9,999
Philanthropist	\$2,500 - 4,999
Benefactor	\$1,000 - 2,499

Other recognition clubs:

Silver Club	\$35.00
Gold Club	\$50.00
Ruby Club	\$100.00
Sapphire Club	\$250.00
Emerald Club	\$500.00
Diamond Club	\$750.00



The Kappa Delta Rho Foundation

Investing in the Lives of Students

PLACE
STAMP
HERE

Stock Gifts Keep Giving

The rise in the value of the stock market is creating an exciting opportunity for many of our members—the opportunity to make a gift of appreciated stock. Appreciated assets can often create a variety of estate and other tax problems. By making a gift of these appreciated securities to the Kappa Delta Rho Foundation, you receive many rewards.

First, you avoid paying capital gains tax on the appreciated value of your stock.

Second, you receive a present charitable income tax deduction for the full value of your stock. Third, you have the benefit of knowing you are helping the many young men who benefit

each year from the programs supported by the Kappa Delta Rho Foundation.

You may make this type of gift to support the annual fund, restrict the gift to endow a specific scholarship, or restrict the gift to build the general endowment of the Kappa Delta

Rho Foundation.

If you would like to explore the opportunities available to you, please contact Bill Paris, Director of Gift Planning and Development, The Kappa Delta Rho Foundation, 331 South Main Street, Greensburg, PA 15601, or call (888) 243-6357.

DOUBLE YOUR GIFT!

Many companies offer matching programs to double the charitable contributions of their employees. This is a painless way to double your gift to your favorite charities. In most cases, all you need to do is speak to your personnel department about completing a matching gift form. You complete the form and send it to the foundation along with your contribution. We do the

rest. These matching gifts add up. If your company has a matching gifts program, take advantage of this opportunity to double the impact of your generous support of Kappa Delta Rho!

If you are uncertain that your company has a matching gifts program, a quick call to your personnel department will provide you with an answer. We thank the following brothers for taking advantage of this opportunity

**JAMES BUTERBAUGH, ZETA '55
ALLENDALE INSURANCE
FOUNDATION**

**PETER BYRNE, TAU ALPHA '88
MICROSOFT MATCHING
GIFTS PROGRAM**

**STEPHEN R. KNAPP, IOTA '84
U.P.S. FOUNDATION**

**J. HALL JONES, LAMBDA BETA '91
WHEAT FIRST BUTCHER
SINGER FOUNDATION**

**LUCKY H. YAPLE, RHO '78
MINERAL TECHNOLOGIES, INC.**

ORDER OF THE PEREGRINE FALCON

The Order of the Peregrine Falcon is a means by which the foundation can acknowledge and thank dedicated undergraduate members of the fraternity for contributing their personal resources to support the programs of the foundation. Any undergraduate member of the fraternity may become a member by making an unrestricted contribution of at least \$35 to the Kappa Delta Rho Foundation. Each member receives a special recognition pin and numbered certificate. The following brothers are new members:

NEW PEREGRINE FALCON MEMBERS

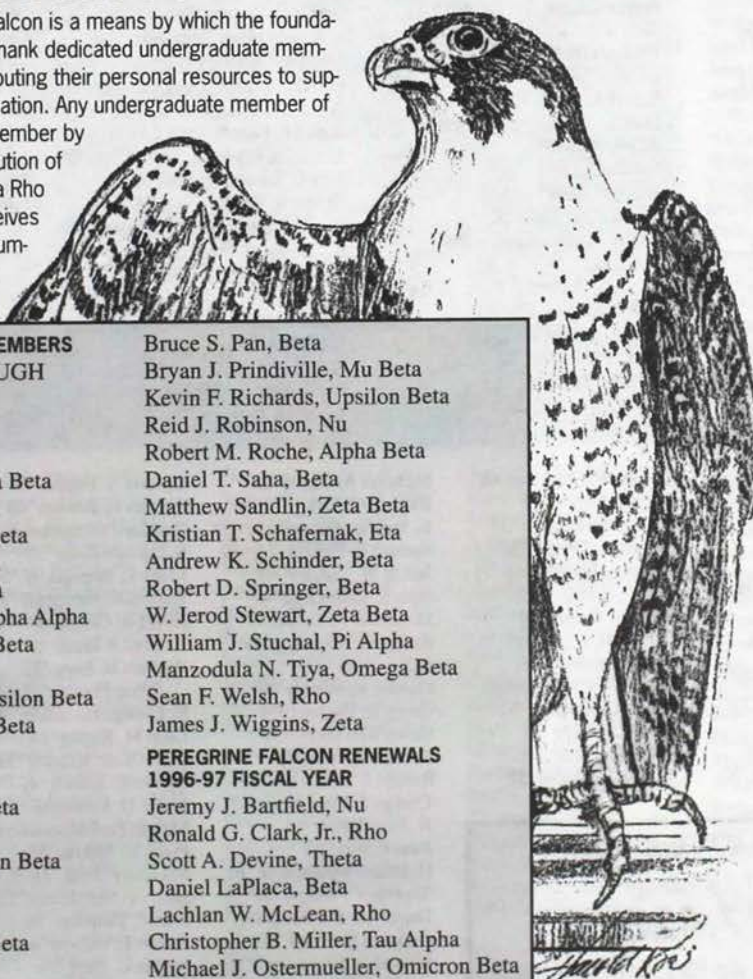
OCTOBER 8, 1996 THROUGH
SEPTEMBER 4, 1997

Douglas G. Bober, Jr., Eta
Geoffrey D. Bowers, Delta
William Scott Bradley, Zeta Beta
Todd A. Broecker, Pi Alpha
Dustin W. Chappell, Zeta Beta
Kevin J. Chipalowsky, Beta
Keith R. Dungan, Zeta Beta
Harry J. Feltenberger III, Alpha Alpha
Craig A. Frederick, Alpha Beta
Matthew Q. Gilbert, Theta
Gordon G. Greenwood, Upsilon Beta
David R. Grulke, Lambda Beta
Ryan B. Hall, Eta
Brett M. Kemp, Zeta Beta
John J. Jacobson III, Psi Beta
Jason A. Lear, Zeta Beta
Nathan E. Lemberg, Epsilon Beta
Brian M. Lewis, Lambda
James R. Love, Eta
John A. Lucksinger, Zeta Beta
K. Philip M. Lychak, Tau
Patrick J. Nikolai, Lambda Alpha
Michael E. Niver, Beta
John M. Ogle, Nu Alpha

Bruce S. Pan, Beta
Bryan J. Prindiville, Mu Beta
Kevin F. Richards, Upsilon Beta
Reid J. Robinson, Nu
Robert M. Roche, Alpha Beta
Daniel T. Saha, Beta
Matthew Sandlin, Zeta Beta
Kristian T. Schafermak, Eta
Andrew K. Schinder, Beta
Robert D. Springer, Beta
W. Jerod Stewart, Zeta Beta
William J. Stuchal, Pi Alpha
Manzodula N. Tiya, Omega Beta
Sean F. Welsh, Rho
James J. Wiggins, Zeta

**PEREGRINE FALCON RENEWALS
1996-97 FISCAL YEAR**

Jeremy J. Bartfield, Nu
Ronald G. Clark, Jr., Rho
Scott A. Devine, Theta
Daniel LaPlaca, Beta
Lachlan W. McLean, Rho
Christopher B. Miller, Tau Alpha
Michael J. Ostermueller, Omicron Beta
Chad T. Peck, Theta
Stephen M. Thomas, Beta
Michael E. Van Brunt, Beta



NEW FOUNDER'S SOCIETY MEMBERS

The Kappa Delta Rho Foundation is pleased to welcome three new members to the Founder's Society. There are several levels of giving within the Founders Society: Benefactor, \$1,000–2,499; Philanthropist, \$2,500–4,999; Patron, \$5,000–9,999; and Grand Patron, \$10,000 or more. Membership in the Founder's Society is based on a member or patron's contributions to the annual fund of the Kappa Delta Rho Foundation.

Gregory Suran, Eta Alpha '92.

Brother Suran is a graduate of Eta Alpha at Robert Morris College. He is the owner of Text and Graphics Solutions in Natrona Heights, Pennsylvania.

Wesley Litzinger, Zeta '73.

Brother Litzinger is a graduate of Zeta Chapter at Penn State University. He is a board member for Zeta Alumni Corporation and vice president of KDR Properties, Inc. Wes is an architect with Litzinger and Associates and resides in Laguna Beach, California.

S. Carlisle Botts, Epsilon '30.

Brother Carlisle "Tommy" Botts is a graduate of Epsilon Chapter at Franklin College. He is retired and resides in Frankfort, Indiana.

CONTRIBUTIONS BY CHAPTERS

ALPHA MIDDLEBURY COLLEGE

\$6,043
Stephen H. Arnold '41
Christopher A. Barry '91
Robert J. Baskin '64
John B. Buchard '81
Scott H. Buzby '51
Philip L. Carpenter '33
Richard W. Cushing '35
Stephen A. Feldman '88
Clifford W. Fulton '42
Frederick J. Grab '40
Robert C. Hall '65
Cecil C. Holstrom '38
George D. Johnston III, '76
Robert A. Jones '59
John J. Kalbacher '75
E. Michael Koellhoffer '74
James J. Lafranz '85
Douglas S. Langdon '54
John A. Moser '61
S. Peter Nikitas '43
Russell A. Norton '38
Halbert E. Phillips '26
Dario Quiros '61
Henry M. Richardson '38
Nathaniel J. Rockwell '82
Steven M. Roser '65
David C. Ruberg '68
H. Robert Sakaniwa '86
G. Crossen Seybolt, Jr. '77
Todd J. Stanley '89
David D. Steece '72
Peter T. Stewart '71
Raymond B. Strong III '91
William T. Watt '39
Vernon M. Wright '41
Ferdinand Wyckoff, Jr. '54
John G. Youngman '90
Robert P. Youngman '64

BETA CORNELL UNIVERSITY

\$8,783
William M. Ackerman '75
Roy P. Allen '56
Brian W. Appgar '92
Richard C. Bower '73
Phillip J. Bracht '78
Evan B. Brody '86
Michael S. Buff '97
Roger C. Burggraf '55
Wesley A. Clark '73
Millard V. Cogshall '37
Laurence W. Corbett '24
Lee T. Corbett, Jr. '59
Robert D. Corrie '53
Scott A. Crego '86
Howard F. Crumb '53
Dale H. Cutler '35
Bruce L. Davis '60
Gordon R. Dennis '54
Roger L. Doughty '89
Richard A. Ferrari '54
Charles H. Fowler '73
David J. Harding '72
Joshua M. Herman '99
Roy E. W. Herrmann, Jr. '43
Ralph L. Higley '30
Charles C. Howell '87
John H. Humpton III '76
John R. Hunsinger '84
Aaron F. Hunt '95
Richard G. Jackson '63
Cornelius C. Jones '53
Mark S. Kachigian '46
Jonathan M. Kaplan '73
David L. Ladd '58

Daniel LaPlaca '96
Dale S. Lazar '74
Dean B. Livingston '72
Jay D. Luft '79
Mrs. Commerford B. Martin
David R. May '80
Michael A. McCarthy '57
Harold McEachron '38
John G. Miers '66
William D. Munch '76
Robert W. Neureuter '45
James A. Oest '31
John R. Padgett '58
Bruce S. Pan '99
Stuart Pergament '87
William D. Phelps '70
Merton M. Pultz '43
Frederick W. Rea '31 (dec.)
Harold A. Reynolds '30
James L. Rose '40
Alonzo H. Ross III '72
Robert R. Saltzman '75
Philippe G. Savary '72
Dominick L. Schirripa '99
Walter W. Schwartz '69
Jeffrey L. Shapiro '99
Robert B. Sleeth '68
Walter R. Stillman '56
J. Water Street '63
Robert W. Thomas '57
Stephen M. Thomas '98
Scott D. Thyng '72
Michael E. Van Brunt '97
Blaise P. Vitale '84
Curtis M. Walborn '76
James J. Whalen '57
Walter N. Whitney '31

GAMMA S.U.N.Y. ALBANY

\$3,086
Hamilton Acheson '31
Wilfred P. Allard '35
Richard S. Beach '48
Gerard R. Brophy '51
George E. Decker '36
Paul A. Downes '68
Robert E. Goodrich '32
Harold A. Haynes '38
Donald C. Hoyt '50
Herbert W. Leneker '43
Curtis L. Pfaff '48
Robert E. Reid '71
Alan R. Stephenson '52
Daniel L. Van Leuvan '35
Richard E. Wagner '54

DELTA COLGATE UNIVERSITY

\$2,350
Alan S. Anderson '70
Paul J. Behar '94
Geoffrey D. Bowers '97
William C. Brigham '44
David S. Bundy '80
Arthur O. Burgess '28
Richard W. Carpenter '50

SPECIAL GIFTS Gordon and Clare Johnson Annuity Trust

Susan Johnson Willey, Daughter
\$5,000
Commerford B. Martin
Engineering Scholarship Fund
Madeline Martin, Widow
\$4,000

Oregon Community Foundation

Loran L. Stewart, Sigma '32 Fund
\$5,000
William F. Hogan Memorial
Scholarship Fund
John C. Carl, Theta '51
\$10,000

Nu Alpha Chapter Scholarship Fund

Andrew F. Barth, Nu Alpha '83
\$5,000
Rho Chapter Alumni Endowment
Scholarship Fund
Rho Alumni Corporation
\$23,500

FOUNDER'S SOCIETY (UNRESTRICTED GIFTS) GRAND PATRON

\$10,000 or more
Lee H. Idleman, Iota '54
PATRON
\$5,000 - \$9,999
Andrew F. Barth, Nu Alpha '83
Wally Miller, Theta '59
PHILANTHROPIST
\$2,500 - \$4,999
Robert A. Jones, Alpha '59
Douglas M. Rammel, Pi Alpha '90
BENEFACTOR
\$1,000 - \$2,499
James H. Buterbaugh, Zeta '55
John C. Carl, Theta '51
Paul A. Downes, Gamma '68
Ray C. Hunt, Jr., Rho '53
Charles J. Kennedy, Theta '42 (dec.)
Richard D. Kline, Rho '61
James D. Kowalski, Epsilon '57
Mark N. Lundgren, Nu '70
Robert D. Lynd, Iota '67
Donald Muyskens, Rho '58

Stanley W. Chapman '68
Rufus P. Collea '89
Edward M. Darrow '37
Herbert A. Dietzel '52
Robert L. Glendening '71
John S. Goodreds '56
Brent W. Grable '98
Charles H. Harff '51
Paul B. Ingrey '61
Ellsworth P. Johnson '44
Robert C. Johnson '94
George A. King '81
H. Paul Mosher '56
Richard L. Naeye '51

Nicholas A. Orsini '52
Richard C. Park '57 (dec.)
K. Stephen Parmelee, Jr. '59
Samuel E. Phillips, Jr., '40
James M. Quigley '48
John S. Rothschild '49
Donald T. Ruby '38
Robert G. Schreiber '49
Jack F. Sinn '43
Gordon R. Stanley '59
Gregg R. Steamer '74
Howard E. Sutliff '50
Kenneth B. Tate '45
Ronald J. Taylor '63
George J. Terra-Nova '62
N. John Torres '85
John P. Wait '54
H. Drake Williams, Jr. '61
Thomas C. Wilson '49
Daniel U. Wisemen '85
Graydon R. Wood '60
Willard N. Woodward '36

EPSILON FRANKLIN COLLEGE

\$2,695
Robert K. Axelberg '51

William L. Nichol, Zeta '59
William J. Paris, Eta '87
George J. Peer, Theta '45
Howard A. Rubin, Rho '77
Gregory Suran, Eta Alpha '92
Mark S. West, Upsilon Alpha '88
Robert P. Youngman, Alpha '64

SPECIAL RECOGNITION CLUBS DIAMOND CLUB

\$750 - \$999
Edward B. Curtis, Rho '62
EMERALD CLUB
\$500 - \$749
John E. Booth, Zeta '51
S. Carlisle Botts, Epsilon '30
Jason J. Chai, Nu Alpha '83
John Doddridge, Theta '61
William M. Goodwin, Nu '61
David R. Hamrick, Zeta '57
J. Hall Jones, Lambda Beta '91
Christopher B. Miller, Tau Alpha '97
Mark W. Paradies, Eta '77
R. Marshall Phillips, Zeta '60
Frank E. Thomas, Kappa '52

SAPPHIRE CLUB

\$250 - \$499
John R. Behrmann, Iota '58
David K. Bernstein, Omicron Alpha '88
Gary J. Buchmann, Iota '79
Fred O. Cook, Theta '63
Robert D. Corrie, Beta '53
Robert L. Gett, Omega '72
James C. Hubbard, Psi '66
Raphael E. Isaac, Iota Beta '91
Roy P. Jackman, Iota '49
Robert V. Kiser, Rho '74
Harold McEachron, Beta '38
V. Richard Miller, Theta '63
Timothy F. Moore, Eta '68
Gerald L. Murray, Theta '66
Anthony R. Pasquinelli, Eta '56
Russel E. Patton, Theta '51
Joseph W. Rejuney II, Epsilon Beta '90
Jack D. Shinneman, Nu '62
Gordon R. Stanley, Delta '59
Robert L. Swinney, Sigma '58
H. Alan Vasoli, Rho '55
P. Duane Walker, Zeta '53

RUBY CLUB

\$100 - \$249
William M. Ackerman, Beta '75
Roy P. Allen, Beta '56
James M. Anderson, Rho '63

Robert H. Andrew, Sigma '49 (dec.)
Urban H. Anslinger, Theta '48
Christopher P. Arman, Upsilon Alpha '88
Scott A. Bailey, Zeta '69
David C. Ballard, Iota '71
Douglas Barna, Theta Beta Hon.
Edward S. Beach, Nu '69
Kenneth A. Beckley, Nu '62
Charles E. Benson, Epsilon '60
William C. Benton, Theta '56
Charles W. Berger, Iota '75
Robert M. Berty, Zeta '59
George F. Blades, Iota '54
Robert E. Blasen, Sigma '33
David M. Bliley, Psi '62
Reinhard W. Bockstette, Epsilon '68
Sean L. Bohl, Gamma Beta '89
Keith J. Bona, Iota Beta '92
Garland Boothe III, Iota '84
Alvah C. Borah, Eta '32 (dec.)
Dennis P. Bowen, Zeta '60
Edward L. Bowes, Alpha Alpha '63
Philip J. Bracht, Beta '78
Dusan Bratic, Zeta '68
Howard F. Brown, Eta '31
Alfred A. Bruhn, Jr., Rho '57
James J. Bryja, Zeta '79
Mark P. Bula, Eta Alpha '89
Roger C. Burggraf, Beta '55
Peter Byrne, Tau Alpha '88
J. Gregory Carl, Theta '80
Albert E. Carlson, Eta '34
Philip L. Carpenter, Alpha '33
James D. Carroll, Alpha Beta '93
Joshua M. Champion, Pi Alpha '96
James A. Chaney, Nu '71
W. Drew Chick, Jr., Lambda '34
David T. Clark, Rho '68
Wesley A. Clark, Beta '73
Richard J. Clawson, Sigma '69
James P. Clugston, Zeta '58
David R. Coffin, Epsilon '68
Laurence W. Corbett, Beta '24
Eugene F. Corbin, Lambda '27 (dec.)
Kenneth R. Coulter, Jr., Iota '92
Erik A. Covitz, Sigma Alpha '87
Howard F. Crumb, Beta '53
Robert J. Dankanyin, Zeta '56
Richard G. Davis, Lambda '65
V. Thomas DeVille, Theta '62
Richard DeBernardo, Jr., Alpha Alpha '75
Craig A. DeDecker, Kappa Alpha '85
John V. Dempsey, Jr., Upsilon Alpha '90

Scott A. Bailey '69
Robert M. Berty '59
John E. Booth '51
John J. Borbee '84
Dennis P. Bowen '60
Dusan Bratic '68
James J. Bryja '79
David A. Burdette '81
Anson C. Burwell, Jr. '42
James H. Buterbaugh '55
Peter M. Clarke '90
James P. Clugston '58
David T. Corradi '91
Michael S. Cover '78
Garry N. Crothers '55
Robert J. Dankanyin '56
Bradford K. Dillman '90
Erik R. Foster '79
David R. Hamrick '57
E. David Harr '66
David C. Henderson '77
R. Merl Hess '54
Paul F. Hummer II '63
David F. Irwin '30
Thomas R. Jensen '50
Steven C. Kelly '84
John R. Kosko '63

1996-97 Fund Drive

Total Giving

\$227,428.57

\$77,188.48 Restricted Gifts
\$150,240.09 Unrestricted Gifts
from 1,111 Contributors

Gordon R. Dennis, Beta '54
 Arnold E. Denton, Theta '49
 Robert T. Dingman, Nu '69
 John A. Falcone, Rho '60
 Charles E. Filippo, Nu '62
 Thomas A. Fiore, Sigma Alpha '87
 William R. Fox, Nu '55
 William A. French, Theta '51
 Gerald P. Fritzke, Theta '54
 H. Milton Fry, Omega '63
 David A. Fulton, Sigma '78
 Peter C. Gallagher, Kappa '52
 William H. Gallagher, Psi '57
 Miles C. Gerberding, Nu '54
 Walter B. Gilmour, Rho '39
 Glenn T. Gnrrep, At Large Member
 John S. Goodreds, Delta '56
 Christopher K. Gordon, Zeta Beta '95
 Arthur R. Gottschalk, Eta '49
 Sid M. Hessinger, Theta '32
 James R. Hetherington, Nu '53
 Andrew W. Hibbel, Eta '90
 Ralph L. Higley, Beta '30
 Daryl S. Hodgkinson, Iota '92
 Edward K. Hoffman, Jr., Iota '68
 Charles C. Howell, Beta '87
 Paul F. Hummer II, Zeta '63
 Paul B. Ingrey, Delta '61
 Frank S. Ioppolo, Sr., Beta Alpha '63
 David F. Irwin, Zeta '30
 Thomas R. Jensen, Zeta '50
 George D. Johnston III, Alpha '76
 Cornelius C. Jones, Beta '53
 James W. Jones, Theta '92
 Richard O. Jones, Nu '64
 Mark S. Kachigian, Beta '46
 Andrew P. Kail, Rho '91
 Christopher T. Kauffman, Alpha Beta '88
 Brian S. Keller, Mu Beta '92
 John F. Kiernan, Nu Alpha '83
 George A. King, Delta '81
 Harold P. Knopp, Lambda '33
 Norman G. Kouba, Eta '54
 Richard E. Kurz, Gamma Alpha '68
 Dale S. Lazar, Beta '74
 Henry A. Lee, Rho '51
 James D. Levi, Rho '59
 Curtis A. Littlejohn, Nu '78
 Dean B. Livingston, Nu '78
 Thomas C. Lockwood, Nu '56
 John G. Lore, Iota '67
 John C. Ludlum, Rho '35
 Jay D. Luft, Beta '79
 Gerald D. Luken, Epsilon Beta '91

Duane E. Lupke, Nu '52
 Brian H. MacNeil, Epsilon Beta '87
 Vincent Majkowski, Pi '65
 Todd R. Marcink, Phi Alpha '95
 Robert Mathers, Omicron '32
 Lester O. Matthews, Sigma '25
 David R. May, Beta '80
 Michael A. McCarthy, Beta '57
 Alexander McClinch III, Iota '64
 Donald L. McDowell, Kappa '57
 Kenneth L. McGinnis, Sigma '65
 Thomas M. McGlasson, Nu '65
 Lachlan W. McLean, Rho '98
 John V. Melick, Iota '93
 John R. Meyers, Nu '75
 Patrick B. Mikesell, Omega '62
 Glenn G. Miller, Alpha Alpha '61
 Jimmy W. Miller, Theta '63
 Richard A. Miyazaki, Eta '84
 Walter A. Molawka, Jr., Iota '71
 James A. Morgart, Zeta '59
 David W. Morley, Theta '65
 John A. Moser, Alpha '61
 Elmer E. Naugle, Iota '50
 George W. Neal, Nu '57
 Arthur S. Nelson, Eta '32
 Dylan D. Newlander, Tau '92
 Clayton F. Ost, Zeta '55
 Danyal Ozizmir, Nu Alpha '85
 John R. Padgett, Beta '58
 Randal C. Paniello, Eta '80
 Richard C. Park, Delta '57 (dec.)
 John E. Parker II, Pi '68
 David W. Pearson, Psi '68
 George S. Peck, Theta '40
 Angelo J. Pegno, Iota '53
 Stuart Pergament, Beta '87
 Damon W. Peters, Phi Alpha '89
 Michael L. Peters, Alpha Alpha '91
 Curtis L. Pfaff, Gamma '48
 Samuel E. Phillips, Jr., Delta '40
 John K. Powell, Jr., Rho '72
 James W. Prech, Theta '65
 Vincent I. Purcell, Zeta '52
 Dario Quiros, Alpha '61
 James C. Ramicone, Pi Alpha '88
 Frederick W. Rea, Beta '31 (dec.)
 Craig S. Reber, Theta '73
 Ronald L. Reinking, Nu '59
 Claude T. Rich, Nu '29
 Patrick J. Rielly, Zeta '58
 Gerald L. Robinson, Eta '85
 Lowell E. Roe, Kappa '48
 David C. Ruberg, Alpha '68
 Timothy G. Rupert, Omega '68

Chadwick A. Rupp, Pi Alpha '94
 James T. Ryan, Rho '56
 James F. San Sebastian, Lambda '50
 Randal S. Saunders, Sigma '79
 William D. Schaeffer, Jr., Iota '70
 Steve Schilson, Gamma Alpha '65
 Tony J. Schmeltz, Theta '61
 Timothy A. Schrag, Xi Beta '93
 Robert D. Schutt, Eta '34
 Joel P. Shappell, Nu '91
 Bradley K. Shoff, Eta Alpha '87
 Robert A. Shortt, Lambda '83
 Wayne M. Sieron, Theta '65
 Curtis K. Smith II, Rho '67
 Charles E. Snyder, Rho '29 (dec.)
 Todd J. Stanley, Alpha '89
 Dennis N. Stanz, Zeta '65
 Gregg R. Steamer, Delta '74
 William M. Steinfeldt, Theta '38
 Alan R. Stephenson, Gamma '52
 Bob B. Stern, Theta '54 (dec.)
 Richard K. Stetzer, Zeta '82
 Ronald L. Stief, Zeta '53
 Philip D. Stinson, Theta '65
 Lowell L. Stawser, Nu '66
 Donald E. Stroud, Nu '54
 Richard A. Sweigart, Theta '65
 Rudolph J. Tekaucic, Kappa '60
 Theodore R. Thompson, Lambda '37
 Craig S. Thomson, Nu '68
 Scott C. Tillman, Theta '89
 Werner C. Trifshouser, Theta '56
 Franklin J. Vernon, Eta '34
 Harlow E. Waite, Rho '57
 Philip H. Wallick III, Iota '70
 John J. Walsh, Rho '86
 Gerald A. Wasson, Jr., Psi '69
 Donald K. Wemlinger, Nu '66
 Archie C. West, Epsilon '36
 James R. Wheeler, Lambda Hon.
 Bruce H. Whitenight, Zeta '36
 Walter N. Whitney, Beta '31
 David K. Wilkinson, Epsilon '52
 Gerald I. Wilson, Rho '60
 James T. Wolyniec, Psi '60
 Stanley W. Woods, Jr., Eta '58
 Donald W. Woodward, Theta '41
 Vernon M. Wright, Alpha '41
 Albert B. Wrigley, Zeta '55
 Kenneth W. Wysong, Theta '29
 Lucky H. Yapple, Rho '78
 Keith F. Young, Sigma '49
 John G. Youngman, Alpha '90
 John J. Zureck, Beta Alpha '63

William W. Brant '55
 Timothy A. Bunton '89
 Kenneth J. Caldwell '66
 Donald S. Campbell '66
 J. Gregory Carl '80
 John C. Carl '51
 Fred O. Cook '63
 William L. Coorsh '78
 David A. Crow '74
 G. Michael Cullen II '71
 V. Thomas DeVille '62
 Robert S. DeCoursey '88
 George E. Dennis '36
 Arnold E. Denton '49
 Scott A. Devine '97
 John Doddridge '61
 Don C. Edgington '67
 Paul J. Fleming '71
 William A. French '51
 Gerald P. Fritzke '54
 Richard G. Graves '55
 Victor H. Green '49
 Robert C. Griffin '50
 Martin W. Grossman '62
 Thomas L. Guthrie '62
 Charles P. Hendricks '56
 Rodney K. Hendricks '84
 Sid M. Hessinger '32
 Robert L. Huxtable '56
 Daniel R. Johnsen '62
 Daniel B. Johnson '82
 Robert K. Jolls '41
 James W. Jones '92
 John E. Kanally '40
 Charles J. Kennedy '42 (dec.)
 Robert W. Kropf '48
 William J. Landis '56
 Edwin C. Leonard '62
 William F. Marks '60
 John H. Matthews '35
 John C. McLaughlin '50
 Jimmy W. Miller '63
 V. Richard Miller '63
 Wally Miller '59
 William L. Molyneux '38
 David W. Morley '65
 Gerald L. Murray '66
 Richard C. Neff '43
 Russel E. Patton '51
 Chad T. Peck '97
 George S. Peck '51
 George J. Peer '45
 John E. Picken '77
 James W. Prech '65
 Michael P. Pumlilia '71
 Craig S. Reber '73
 Phillip J. Reber '86
 William J. Rippe '65
 Vincent A. Scavo, Jr. '90
 Tony J. Schmeltz '61
 Thomas L. Scopmire '60
 Duane P. Sellers '77
 Wayne M. Sieron '65
 Andrew W. Smithberger '54
 Robert W. Stalker '52
 Philip W. Steinfeldt '71
 William M. Steinfeldt '38
 Bob B. Stern '54 (dec.)
 Philip D. Stinson '65
 Thomas M. Strohl '53
 Peter W. Strong '49
 Richard A. Sweigart '65
 Scott C. Tillman '89
 T. Terry Tousey '77
 Werner C. Trifshouser '56
 Jeffrey W. Tucker '90
 Edward R. Williams '58
 Philip R. Wilson '50
 John D. Winters, Jr. '55
 Donald W. Woodward '41
 Kenneth W. Wysong '29
 Herbert F. Zinsmeister '44

IOTA
BUCKNELL UNIVERSITY
 \$20,736
 David C. Ballard '71
 Richard C. Bean, Jr. '88
 John R. Behrmann '58
 William W. Bell, Jr. '50
 John L. Bergen '35
 Charles W. Berger '75
 George F. Blades '54
 Robert Bonn '37
 Garland Boothe III '84
 Jason L. Branker '88
 Gary J. Buchmann '79
 Scott L. Cheskey '94
 Kenneth R. Coulter, Jr. '92
 Michael S. Davis '64
 George F. Fahringer '33
 Lionel S. Frank, Jr. '64
 Mark C. Gebhardt '71
 Scott A. Gordon '81
 David K. Granson '93
 Harold H. Grey '79
 Bertram P. Haines '27
 Robert C. Hardy '61
 William G. Hendrixson '52
 Sherman A. Herman '49
 William R. Hicks '73
 Daryl S. Hodgkinson '92
 Edward K. Hoffman, Jr. '68
 John R. Hogan '65
 Harvey P. Huber '48
 Lee H. Idelman '54
 Roy P. Jackman '49
 James A. Kellogg '62
 Stephen R. Knapp '84
 Ted Kullen '57
 Richard H. Leirer '66
 Thomas S. Levato '95
 John G. Lore '67
 Robert D. Lynd '67
 Paul C. Mallay '23
 Anthony B. Markunas, Jr. '66
 Alexander McClinch III '64
 John V. Melick '93
 Walter A. Molawka, Jr. '71
 Elmer E. Naugle '50
 John C. Nixon '40
 Angelo J. Pegno '53
 Richard C. Reeve '68
 Frederick J. Roeper '86
 John P. Rozolis '80
 William D. Schaeffer, Jr. '70
 W. Ryan Schofield '96
 David B. Scranton '96
 Kenneth R. Stubenrauch '69
 John P. Tracey '96
 Philip H. Wallick III '70
 David C. Welber '80
 William W. Werther '74
 Jeffrey S. Whitcomb '91
 William M. Winkler '70

KAPPA
OHIO STATE UNIVERSITY
 \$2,033
 Jack G. Boresh '50
 Walter K. Boyd '45
 William G. Buchholz '68
 Charles J. DeVirgilio '74
 Fred E. Eastman '52
 Charles Fleenor '55
 Dennis C. Fleming '68
 Peter C. Gallagher '52
 Walter F. Garey '49
 James R. Goodrich, Jr. '69
 Kenneth E. Hoeltzel '59
 Fred B. Holcomb IV '65
 Alan T. Lord '72
 Donald L. McDowell '57
 Earl D. McMichael, Jr. '49
 James A. Norris '74
 Donald L. Norris '39

Robert J. Krivanek '66
 Vernon A. Long '65
 John Mallick '55
 William H. Matz '44 (dec.)
 Kenneth R. Maunz '62
 John E. Megles '53
 Robert E. Miller '52
 James A. Morgart '59
 William L. Nichol '59
 Leo A. Nobile '48
 John C. O'Connor '38
 Clayton F. Ost '55
 Donald P. Phillips '57
 R. Marshall Phillips '60
 Vincent I. Purcell '52
 George W. Pyle '50
 Thomas A. Pyle '54
 David W. Reese '71
 Patrick J. Rielly '58
 Robert W. Schilling '72
 William P. Stackhouse, Jr. '53
 Dennis N. Stanz '65
 Richard K. Stetzer '82
 Ronald L. Stief '53
 Robert G. Strehle '91
 David N. Summers III '62

John W. Thomas '73
 Robert G. Thomas '55
 Oscar C. Tissue, Jr. '51
 William A. Vernon '48
 P. Duane Walker '53
 Bruce H. Whiteknight '36
 Daniel E. Winslow, Jr. '48
 Albert B. Wrigley '55
ETA
UNIVERSITY OF ILLINOIS
 \$5,373
 Theodore W. Baylor '50
 Gerry L. Beanblossom '73
 Larry S. Beanblossom '73
 Alvah C. Borah '32 (dec.)
 Robert M. Bordeaux '69
 Howard F. Brown '31
 Albert E. Carlson '34
 Raymond A. Cramer, Jr. '50
 Frank A. Cronican '39
 Frank W. Czaja '72
 Mark S. Dills '76
 Mark A. Dugger '88
 Robert W. Eby '50
 Max K. Eno '33
 Robert A. Frech '49

Douglas L. Garwood '66
 Arthur R. Gottschalk '49
 William G. Haag '69
 Ryan B. Hall '97
 John L. Heckel '53
 Andrew W. Hibbel '90
 William H. Holden, Jr. '54
 Douglas K. Jackson '78
 Randall D. Johnson '74
 Richard M. King '34
 Norman G. Kouba '54
 Frederick E. Koziol '73
 Rev. Canon Knud A. Larsen III '30
 Donald R. Lathrop '53
 David C. Lauder '71
 Joseph D. Lezark '77
 William W. Locke '38
 Bobby G. McCormick '79
 Scott M. Meister '99
 Russell H. Miles, Jr. '51
 Richard A. Miyazaki '84
 Timothy F. Moore '68
 Michael E. Mueller '95
 Richard A. Naatz '50
 Arthur S. Nelson '32
 Brian D. Noel '77

Randal C. Paniello '80
 Mark W. Paradises '77
 William J. Paris '87
 Anthony R. Pasquinelli '56
 John G. Powell '53
 David L. Rathgeb '73
 Carl A. Reed '79
 John David Reed '64
 Gerald L. Robinson '85
 Norbert J. Sargent '57
 Kristian T. Schafermak '97
 Robert D. Schutt '34
 Roderick H. Schutt '69
 Paul C. Sisco '50
 Thomas M. Skafidas '74
 Franklin J. Vernon '34
 James R. Whitfield '49
 Stanley W. Woods, Jr. '58
 William P. Zorc '80
THETA
PURDUE UNIVERSITY
 \$26,986
 Urban H. Anslinger '48
 William C. Benton '56
 Gary N. Bowyer '69

Robert V. Rittenhouse '51
Lowell E. Roe '48
Hans A. Schokatz '66
John C. Seitz '53
Robert M. Sherwood '34
Stephen E. Sinkey '76
Rudolph J. Tekaucic '60
Frank E. Thomas '52
Max C. Weaver '36
Paul L. Weller '35
Earl F. Williams '32

**LAMBDA
UNIVERSITY OF
CALIFORNIA, BERKELEY**
\$7,390

William W. Alving '33
Robert H. Anderson '62
Norbert C. Babin '56
Douglas J. Bell '64
W. Drew Chick, Jr. '34

Bruce T. Coggins '43
Eugene F. Corbin '27 (dec.)
Richard G. Davis '65
Wallace M. Esrey '30
George H. Eveland '38
Hugh F. Ewing '49
Wilfred J. Fekeci '80
Robert A. Goings, Jr. '63
Paul D. Griem, Jr. '61
Christopher Harley '74
Donald L. Haworth '50
John B. Hendricks '65
Ronald W. Hendrickson '51
Richard A. Hickman '46
Bertram C. Izant '63
Johnson Annuity Trust
Arthur F. Kirby '54
Harold P. Knopp '33
Vance D. Lewis '33
Raleigh L. McKisson '47
Asa Y. Meudell III '65

William J. Morgan '62
Howard B. Mount '48
Robert W. Nicholson '89
Jack W. Norris '44
H. Wade Patterson '47
Paul F. Pick '39
Robert P. Praetzel '50
John A. Reshoff '30
Ned T. Ryan '65
James F. San Sebastian '50
William D. Sharon '67
Robert A. Shortt '83
Theodore R. Thompson '37
James R. Wheeler, Hon.
Allen R. Whitsitt '52
B. Kent Wood '63

**MU
UNIVERSITY
OF MICHIGAN**
\$340

William E. Behringer '44
(dec.)
Richard D. Boynton '42
Robert L. Boynton '37
Byron C. Coats '32
James A. O. Crowe '43
Hubert W. Gouldthorpe '27
Roland Savilla '40

**NU
INDIANA UNIVERSITY**
\$7,235

Nolan W. Allen '69
J. Robert Alter '50
James L. Babb, Jr. '62
Jeremy J. Bartfield '97
Edward S. Beach '69
Kenneth A. Beckley '62
Stephen R. Branam '69
Thomas E. Brethauer '57
Frederick H. Buehl II '98
Roger H. Burton '53
William P. Butz '65
Stephen C. Chaleff '48
James A. Chaney '71
Andrew J. Chmiel '65
James D. Clements '60
Jack L. Cooper '65
Robert T. Dingman '69
John R. Drago '48
Richard L. Edrington '68
Frank E. Elm '53
Stephen L. Earnest '70
Herbert E. Farrell '44
Charles E. Filippo '62
Dean Foster '42
Robert N. Fox '50
William R. Fox '55
James R. Grambrell '61
Miles C. Gerberding '54
William M. Goodwin '61
Robert W. Gregory '70
Robert B. Grouss '55
James R. Gumpfer '51
Charles E. Hertling '59
James R. Hetherington '53
C. Bruce Hinton '58
Brian K. Houlihan '76
Mark A. Jones '77

Richard O. Jones '64
G. Paul Klacik '50
Allen W. Koehlinger '55
Dean A. Koehlinger '66
James F. Koehlinger '58
Joseph E. Kriebble '49
Lance J. Lahr '81
William L. Lawson '53
Allan B. Levenberg '66
Curtis A. Littlejohn '78
Thomas C. Lockwood '56
Brandt L. Ludlow '69
Herbert G. Ludlow '36
Mark N. Lundgren '70
Duane E. Lupke '52
James A. Mayes '90
Thomas V. McComb '59
Thomas M. McGlasson '65
John R. Meyers '75
Robert J. Musselman '61
George W. Neal '57
Nu Chapter Anonymous
James R. Oliver '89
George T. Orfanos '44
Douglas E. Otto '72
Kevin C. Palmer '85
Wayne C. Ponader '53
Thomas A. Rather '74
Ronald L. Reinking '59
Claude T. Rich '29
Robert W. Risteen '49
Reid J. Robinson '97
Stanley C. Salomon '55
Joel P. Shappell '91
James W. Sherby '68
Jack D. Shinneman '62
William J. Shive '66
Gordon N. Spellman '35
Edward A. Spray '63
A. Lee Stilwell '63
Lowell L. Strawser '66
Donald E. Stroud '54
James Craig Talbott '88
Craig S. Thomson '68
Randel E. Trebing, Jr. '69
Donald K. Wemlinger '66
Gary W. Wilson '69
Richard S. Wilson '58
Douglas S. Wokoun '76

Joseph M. Woodward '70

**XI
COLBY COLLEGE**
\$760
A. Lawrence Barr '63
John S. Bawot '76
Robert A. Cooke '53
Howard H. Gaskill, Jr. '52
Richard D. Goodridge '44
Edward T. Kyle '36
Very Reverend Harold F. Lemoine '32
M. Cass Lightner '51
Richard B. Mack '51
Schuyler L. Mott '51
Gardner Oakes '40
Linwood E. Palmer, Jr. '42
George C. Putnam '34
James R. Putnam '73
Donald H. Rhoades '33
Maurice F. Ronayne '51
Barry N. Sisk '59
Thomas C. Staples '78
James A. Steen '68
John M. Whittier '60

**OMICRON
BUTLER UNIVERSITY**
\$210
Harold W. Buckhorn '34
Wright C. Cotton '33 (dec.)
Donald A. Jones '33
Robert Mathers '32

**PI
GETTYSBURG COLLEGE**
\$980
Charles F. Anderson '33
Dean B. Arnold '29
James W. Ayre '56
Brian J. Blood '70
Robert H. Boyer '60
Charles G. Cavey, Jr. '53
G. David Deardorff '63
William R. Deisinger '68
Timothy J. Eaton '71
B. Donald Ellsworth '52
William T. Godfrey '66

RESTRICTED GIFTS

**GORDON AND CLARE JOHNSON
ANNUITY TRUST**
Susan Johnson Willey, Daughter

**COMMERFORD B. MARTIN ENGI-
NEERING SCHOLARSHIP FUND**
Madeline Martin, Wife

**WILLIAM F. HOGAN
SCHOLARSHIP FUND**
John C. Carl, Theta '51

**NU ALPHA CHAPTER
SCHOLARSHIP FUND**
Andrew F. Barth, Nu Alpha '83

**RHO CHAPTER ALUMNI
ENDOWMENT SCHOLARSHIP FUND**
Rho Alumni Corporation
Edward B. Curtis, Rho '62
Donald Muyskens, Rho '68
Roswell W. Corwin, Rho '25
Bruce E. Kleinert, Rho '71
David T. Clark, Rho '68

**HORACE E. SHACKELTON
SCHOLARSHIP FUND**
Scott A. Crego, Beta '86
David R. May, Beta '80
Stuart Pergament, Beta '87

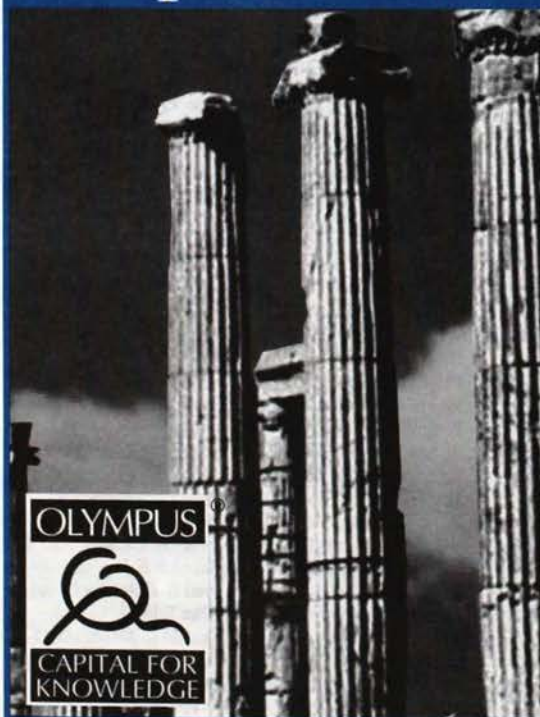
NU CHAPTER SCHOLARSHIP FUND
Mark N. Lundgren, Nu '70

**CHRISTOPHER T. CHRISTENSEN
SCHOLARSHIP FUND**
Henry S. Date
Robert D. Stalley
Paul F. Moser, Sigma '50
Keith F. Young, Sigma '49

**SAMUEL J. BRIGGS SCHOLARSHIP
FUND**
Curtis L. Melville, Phi Alpha '88

ETA CHAPTER SCHOLARSHIP FUND
Gerald L. Robinson, Eta '85

Keep Your Education From Going to Ruins



Olympus Capital for Knowledge™ provides the financial building blocks for **Kappa Delta Rho** brothers, alumni, and family to get an education.

Olympus™ offers **Kappa Delta Rho** Brothers:

- Up to \$25,000 annually
- Money to cover the cost of education-related expenses (i.e. books, fees, and chapter dues)
- No application fee
- Loan checks within one week of approval
- \$3,000 for a personal computer

With one 5 minute phone call to **Olympus**, you can be pre-approved for the **Olympus** loan program for yourself or any other relative of a **Kappa Delta Rho** brother—any time of the year!

Call **Olympus** today to build your education.

1-800-544-2099

and ask for ext. 102.



William F. Hartman II '70
James M. Henderson, Jr. '55
James H. Honafus '65
Gregory D. Islan '70
Richard E. Lippert '53
Vincent Majkowski '65
James B. McLaughlin '66
Timothy D. McMillin '65
Edward C. Moul '49
John R. Nagle '65
John E. Parker II '68
William C. Pursch '60
Jaye R. Ryan '55
Alvin C. Sheetz '50

RHO LAFAYETTE COLLEGE

\$33,757
James M. Anderson '63
David K. Bilheimer '61
Jeffrey S. Boxer '89
Albert C. Bristow '92
Douglas S. Brown '91
Eric B. Bruce '90
Alfred A. Bruhn, Jr. '57
Cornelius J. Bruinooge '51
David T. Clark '68
Ronald G. Clark, Jr. '97
Murray G. Clay '30
James A. Coggagna '77
Charles A. Corson, Jr. '29
Roswell W. Corwin '25
Robert G. Cucinell '63
Edward B. Curtis '62
Russell V. Davis '64
Thomas A. Dempsey '87
William R. Dodds, Jr. '74
Thomas R. Dougherty '65
John A. Falcone '60
Marc J. Gallagher '93
Richard J. Gant '76
S. Scott Gates '91
Joseph F. Genduso '87
Walter G. Gilmour '39
Jeffrey M. Goldberg '81
Fred C. Guest '59
Walter Hartl '49
Peter T. Holran '87

David P. Hourigan '75
Robert B. Howard '42
Arthur B. Hube '42
David R. Hughes '69
Ray C. Hunt, Jr. '53
Douglas F. Jones '41
Andrew P. Kail '91
Eugene B. Kelsey '79
Robert V. Kiser '74
Bruce E. Kleinert '71
Richard D. Kline '61
Joseph F. Koegler '54
Henry A. Lee '51
James D. Levi '59
Lawrence L. Livornese '81
John C. Ludlum '35
James W. Marlatt '63
Scott B. McCausland '91
John K. McDonald '49
Lachlan W. McLean '98
William G. McLean '32
William C. McNeill '31
Thomas O. Miller '78
Donald Muyskens '58
Jeffrey A. Nelson '89
Patrick F. O'Meara '97
Leonard J. Ostroff '89
Stephen P. Otway '70
Gary A. Paton '63
John K. Powell, Jr. '72
Roland Raver '35
Robert A. Reich '51
Rho Alumni Corporation
William C. Richtmyer '42
James H. Riefenstahl '65
Brian M. Rodowicz '96
Howard A. Rubin '77
James T. Ryan '56
Joseph C. Sands '80
David R. Schoenhaar '96
Curtis K. Smith II '67
Gregory B. Smith '80
Charles E. Snyder '29
(dec.)
John A. Snyder '41
Mark A. Staples '67
Roy H. Stetler, Jr. '36
Donald S. Straub '59

Douglas F. Thompson '55
Robert B.
Thompson III '53
Brian E. Trombley '96
Ervin R.
Van Artsdalen '35
H. Alan Vasoli '55
Robert H. B. Wade '37
Harlow E. Waite '57
Randall A. Walker '88
John J. Walsh '86
J. Scott Watson '78
Berkeley S. Wildman '31
Gerald I. Wilson '60
Justin B. Wineburgh '94
Harrison F. Wood '51
Edward O. Woolridge '52
Lucky H. Yaple '78
Charles W. Zook '30

SIGMA OREGON STATE UNIVERSITY

\$2,325
Leland A. Anderson '53
Myron C. Andrew '71
Robert H. Andrew '49
(dec.)
Robert E. Blasen '33
Kevin S. Brandon '81
Alvin L. Butler '63
Richard E. Carter '77
Richard J. Clawson '69
David A. Fulton '78
George Y. Harry III '40
Charles A. Hart '63
Gerald W. Harte '58
Everett W. Holstrom '39
William A. Johnson '54
Lyle T. Lindsay '47
Robert E. Loud '58
Lester O. Matthews '25
John R. McClure '50
George R. McCormick '50
Kenneth L. McGinnis '65
Harold K. Meyers '49
William C. Moller '52
Paul F. Moser '50

Mark S. Pfister '84
John L. Robbins '72
Edwin K. Robinson '55
Randal S. Saunders '79
Robert L. Swinney '58
Joseph E. Vecera '78
Ernest L. Wagner '40
(dec.)
Keith F. Young '49
Emanuel C.
Zografos '50

TAU CARNEGIE MELLON UNIVERSITY

\$335
Adelmo Botta '34
Wing-Loong Cheung '99
Richard H. Gotwalt '33
William G. Lee, Jr. '92
K. Philip M. Lychak '98
Earle D. Moiles '37
Dylan D. Newlander '92
James C. Reynolds '37

UPSILON FRESNO STATE UNIVERSITY

\$125
Robert A. Forsblad '41
Clarence H. Morrison '40
Jack E. Peebles '44
Holger A. Selling '41
Richard C. Stoner '50

PHI UNIVERSITY OF OKLAHOMA

\$110
Earl W. Dittman '53
William J. Ewalt '49
Edmund R.
Kirkland '53

CHI
UNIVERSITY OF FLORIDA
\$50
Joseph A. Myers '52

MEMORIAL GIFTS

IN MEMORY OF CHARLES J. KENNEDY, THETA '42
BY HIS WIFE, ANNE. B. KENNEDY

IN MEMORY OF DR. RICHARD C. PARK, DELTA '57
BY HIS WIFE, SALLY S. PARK

IN MEMORY OF WILLIAM F. HOGAN, THETA '51
BY JOHN C. CARL, THETA '51

A GIFT IN HONOR OF LAUREN BROOKS PARSONS,
DAUGHTER OF DEREK PARSONS, TAU ALPHA '92
BY CHRISTOPHER B. MILLER, TAU ALPHA '97

PSI
LYCOMING COLLEGE
\$1,505
David M. Bliley '62
Stephen E.
DePalantino, Jr. '94
James F. Edgeworth, Sr. '56
Fred T. Feigley '64
William H. Frasse '83
William H. Gallagher '57
Edward J. Genther III '71
Corey T. Hnat '95
James C. Hubbard '66
Robert G. Jamieson '69
Luke H. Kauffman '62
Stephen M. Leighton '77
Thomas Livingstone, Jr. '71
Jay H. McCormick '60
Bruce A. McNally '64
Franklin W. Noll III '89
David W. Pearson '68
Wade W. Pugh '67
Richard L. Raudabaugh '60
C. Alan Stephan '57
Gerald A. Wasson, Jr. '69
James T. Wolyniec '60

\$1,333
James E. Ake '61
Kevin C. Anderson '79
David G. Bird '59
Domenic V. Calabro '65
John J. Colpo, Jr. '71
Frank J. Farina '61
H. Milton Fry '63
Robert L. Gett '72
J. Todd Good '87
Michael A. Jamison '97
William M. Jensen '77
Jeffrey E. Meek '68
Patrick B. Mikesell '62
John C. Rose III '92
Douglas A. Roth '72
Timothy G. Rupert '68
John M. Sakoian '73
Frederick W. Seinfeld, Hon.
John C. Simkins '87
Stephen J. Steranchak '65
Charles Szvitch '61
Stephen P. Wareham '61
Keith R. Watkins '63
Michael T. Zappone '70

ALPHA ALPHA
LOCK HAVEN UNIVERSITY
OF PENNSYLVANIA
\$1,060

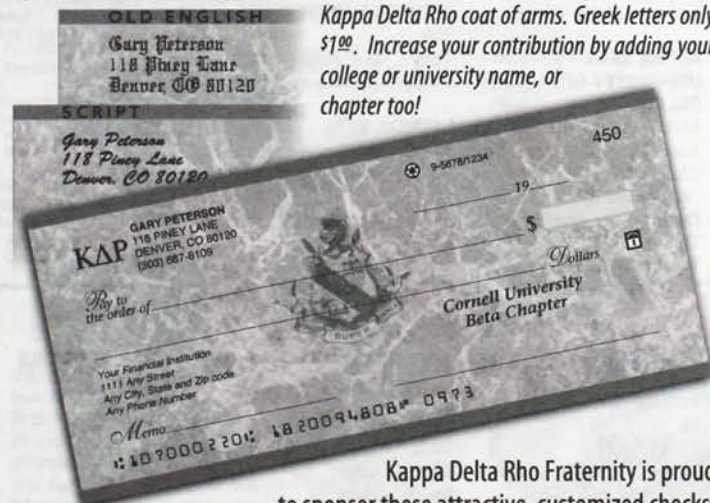
OMEGA
INDIANA UNIVERSITY
OF PENNSYLVANIA

Promote and Support Kappa Delta Rho!

The Kappa Delta Rho Fraternity will receive up to \$150 per box when you order your bank checks with the KAP coat of arms.

Optional custom lettering:

Classic green marble check with gold border and Kappa Delta Rho coat of arms. Greek letters only \$100. Increase your contribution by adding your college or university name, or chapter too!



Kappa Delta Rho Fraternity is proud to sponsor these attractive, customized checks.

Order now! Check Partners, inc. 1-800-923-2435 (CHEK)

Your check is printed on recycled paper with 40% pre-consumer and 20% post-consumer waste. We print only with biodegradable inks. Each order includes 1-part deposit slips, check register, and recycled checkbook.

ORDER FORM

Name _____
Daytime phone () _____

9BL

Starting number for check supply
If not specified, starting number will be 301

Enclose with your order:

- ✓ Voided check from your checking account.
- ✓ Deposit slip from same account.
- ✓ Payment check payable to Check Partners, Inc.
- ✓ Complete order form for Kappa Delta Rho checks.

200 single checks per box # of boxes _____ x \$15.00 = \$ _____
150 duplicate checks per box # of boxes _____ x \$15.75 = \$ _____
Optional: Greek letters # of boxes _____ x \$1.00 = \$ _____
☐ Old English ☐ Script # of boxes _____ x \$2.00 = \$ _____

Indicate college, university, or chapter for text above signature line.

Limited to 2 lines with 26 characters including spaces. \$2.00 per box = \$ _____

3% sales tax for Colorado residents, non RTD District SUB-TOTAL = \$ _____
3.8% sales tax for Colorado residents, RTD District TAX = \$ _____

Shipping & handling:
Bulk mail - allow 4 weeks from receipt of order. \$1.50 = \$ _____
Priority mail - for every 2 boxes add: \$3.10 = \$ _____

Total order: (Add sub-total and tax) = \$ _____

Mail all items to: Check Partners, Inc., PO Box 621416, Littleton, CO 80162-1416

QUALITY
GUARANTEED

Jeffrey C. Bingaman '88
Edward L. Bowes '63
Craig A. Clark '73
Richard DeBernardo, Jr. '75
Seth A. Fronk '95
Richard L. Funk '59
Frank D. Geno '59
Glenn G. Miller '61
Stephen B. Morley '58
James P. Murphy '59
Arlan R. Neill '60
Michael L. Peters '91
John P. Rech '71
Gene E. Rexford '62
Dale T. Sphar '63
Melvin G. White, Jr. '59
George A. Wilhelm '75

BETA ALPHA
C. W. POST COLLEGE
\$670

James M. Harlow '62
Frank W. Harris '65
Richard T. Hennessy '65
Frank S. Ioppolo, Sr. '63
James M. Leclair '66
Derek J. Seda '83
Scott I. Weinstein '86
Charles H. Woest '64
John J. Zureck '63
Charles H. Zwicker, Hon.

GAMMA ALPHA
BRADLEY UNIVERSITY
\$395

Francis C. Furman '77
Charles A. Green '79
Richard E. Kurz '68
Robert S. McGann '77
Steven Schilson '65
Matthias A. K. Staack '70

EPSILON ALPHA
LEWIS UNIVERSITY
\$60
Randall H. Fleck '75
Dennis J. Turner '75

ETA ALPHA
ROBERT MORRIS COLLEGE
\$1,420
Mark P. Bula '89
Robert W. Cooper '88
Christopher R. Fox '96
Robert W. Gregory, Jr. '92
Luke M. Jacobs '87
Gregory P. Mitchell '94
Gary J. Norris '92
Ronald R. Ramer, Jr. '95
Steven M. Scanlon '94
Bradley K. Shoff '87
Gregory Suran '92

THETA ALPHA
SLIPPERY ROCK UNIVERSITY OF PENNSYLVANIA
\$245
Douglas G. Bado '86
Corey J. Chatlos '92
Richard J. Garnai '88
Joseph J. Hickey '82
Russell J. O'Connor '97
Steven L. Tingley '94
Glenn C. Toepert '86

IOTA ALPHA
UNIVERSITY OF PITTSBURGH AT JOHNSTOWN
\$310
John P. Gundermann, Jr. '84
Sean S. Moran '83
David G. Smith '84

Clayton J. Stahl '84
Herbert Torrance III '84
David V. Trapani '84
Brian J. Winters '88

KAPPA ALPPHA
ILLINOIS STATE UNIVERSITY
\$260

Craig A. DeDecker '85
Douglas E. Goss '85
Kenneth A. Singer '85
Patrick T. Sullivan '86

LAMBDA ALPHA
GANNON UNIVERSITY
\$155
Joseph B. Manno '98

TOP TEN CHAPTERS BY NUMBER OF CONTRIBUTORS

1. RHO (LAFAYETTE COLLEGE)	116
2. NU (INDIANA UNIVERSITY)	100
3. THETA (PURDUE UNIVERSITY)	97
4. BETA (CORNELL UNIVERSITY)	87
5. ZETA (PENN STATE UNIVERSITY)	80
6. IOTA (BUCKNELL UNIVERSITY)	73
7. ETA (UNIVERSITY OF ILLINOIS)	67
8. LAMBDA (UNIVERSITY OF CALIFORNIA, BERKELEY)	53
9. DELTA (COLGATE UNIVERSITY)	49
10. ALPHA (MIDDLEBURY COLLEGE)	45

Patrick J. Nikolai '97
Jason S. Salegna '97
Patrick M. Settemire '87

MU ALPHA
WEST VIRGINIA UNIVERSITY
\$140
Brett M. Ferro '98
Michael E. Howard '84
Scott E. Rimer '95

NU ALPHA
COLUMBIA UNIVERSITY
\$11,125
Joseph J. Adipietro '87
Andrew F. Barth '83
Roger G. Bowers '88
Stephen T. Briones '88
Jason J. Chai '83
Roderick B. Covlin '96
John F. Kieman '83
John L. Liu '89
Evertson L. Lopez '84
John M. Ogle '97
Richard C. Oh '83
Danyal Ozizmir '85
Sascha M. Retailleau '92
Donald E. Wallace '86

XI ALPHA
TEMPLE UNIVERSITY
\$120
Neil D. Larrimore '92
John W. Lund II '89

OMICRON ALPHA
RUTGERS UNIVERSITY
\$500

Todd A. Auerbach '92
James R. Balog '94
David K. Bernstein '88
Robert H. Dolnick '86
Kevin S. Gill '93
Douglas L. Obetz '86
Patrick J. Tully, Jr. '86

PI ALPHA
UNIVERSITY OF TOLEDO
\$3,439

Eric D. Barbe '87
Todd A. Broecker '96
Joshua M. Champion '96
Thomas B. Delac, Jr. '94
Craig A. Gordon '87
Vernon E. Hurd '97
Jerald Katcher '89
Anbu Lingappan '92
Richard N. Longenecker '86
Dave J. Oros '96
Craig M. Ortega '97
Gregg A. Peppel '94
Albert O. Rahal '91
James C. Ramicone '88
Douglas M. Rammel '90
Chadwick A. Rupp '94

Daniel E. Mashburn '87
Paulo J. Melo '99
Kyriakos Michael '94
Paul J. Nager '91
Earl W. Stolz II '92
Mark S. West '88

PHI ALPHA
CLARION UNIVERSITY OF PENNSYLVANIA
\$435

Brian D. Breth '87
Ryan H. Loberg '88
Todd R. Marciniuk '95
Kenneth G. McCurdy '93
Curtis L. Melville, Jr. '88
Michael J. Opal '89
Damon W. Peters '89
Gerald E. Stebbins '88

CHI ALPHA
UNIVERSITY OF PITTSBURGH AT GREENSBURG
\$75
Ronald M. DeGuffroy '88
Donald A. Ravasio '89

PSI ALPHA
BEHREND COLLEGE
\$70
Wayne R. Croyle 2000
Randy M. Eadie '89

TOP TEN CHAPTERS BY CONTRIBUTIONS
(INCLUDES BOTH RESTRICTED AND UNRESTRICTED GIFTS)

1. RHO (LAFAYETTE COLLEGE)	\$33,757.39
2. THETA (PURDUE UNIVERSITY)	26,985.80
3. IOTA (BUCKNELL UNIVERSITY)	20,736.13
4. NU ALPHA (COLUMBIA UNIVERSITY)	11,125.00
5. BETA (CORNELL UNIVERSITY)	8,783.38
6. ZETA (PENN STATE UNIVERSITY)	8,490.57
7. LAMBDA (UNIVERSITY OF CALIFORNIA, BERKELEY)	7,390.00
8. NU (INDIANA UNIVERSITY)	7,234.00
9. ALPHA (MIDDLEBURY COLLEGE)	6,043.00

RHO ALPHA
BRYANT COLLEGE
\$55
Dean B. Rissolo '89
Michael A. White '91

SIGMA ALPHA
HOFSTRA UNIVERSITY
\$435
Erik A. Covitz '87
Alfred M. DiBernardo '87
Thomas A. Fiore '87

TAU ALPHA
RADFORD UNIVERSITY
\$960
Peter Byrne '88
Stefan S. Dedes '95
Kevin G. Jackson '89
Christopher B. Miller '97
Eric D. Padgett '86
Matthew F. Thompson '87
Robert T. Wilson '91

UPSILON ALPHA
PARKS COLLEGE OF SAINT LOUIS
\$2,364
Christopher P. Arman '88
John V. Dempsey, Jr. '90
Troy W. Fey '91
Michael R. Helbig '93
Peter P. Hogan '92
Patrick E. Keyes '90

OMEGA ALPHA
VIRGINIA COMMONWEALTH UNIVERSITY
\$140
Bryan K. Aud '89
John W. Bozicevic '90
Anthony M. Mehfooud '91
J. Hunter Miller '89

ALPHA BETA
UNIVERSITY OF DELAWARE
\$420
James D. Carroll '93
Christopher T. Kauffman '88
David L. Levengood '88
Thomas R. Masino '91
William B. Myles '96
Scott M. Smaniotto '93
Joshua L. Smith '93

GAMMA BETA
VIRGINIA POLYTECHNIC INSTITUTE
\$135
Sean L. Bohl '89
Manuel J. Fernandez '89

Brian N. Davis '94
Robert D. Garrett II '91
Treacy D. Jones '93
Charles H. Kable IV '90
Stephen J. Kehoe '93
Gerald D. Luken '91
Brian H. MacNeil '87
Mills H. March '91
Brian M. Nolan '89
Joseph W. Rejuney II '90
Raymond H. Springsteen '92
Scott D. Sutton '90

ZETA BETA
TARLETON STATE UNIVERSITY
\$255
Christopher J. Dietel '97
Christopher K. Gordon '95
Sean C. Hatfield '97
Brett M. Kemp '97
Cully L. Knipe '94

ETA BETA
WEST CHESTER UNIVERSITY
\$180
Timothy A. Barnes '91
Howard A. Fidler '92
Brian L. Grove '95
Jonathan D. Kapell '95
Boyd A. Miller '92

THETA BETA
NEW YORK INSTITUTE OF TECHNOLOGY
\$210
Douglas P. Barna, Honorary
Stuart R. Johnson '93
Richard R. Sudderth '89

IOTA BETA
ROCHESTER INSTITUTE OF TECHNOLOGY
\$700
Noel T. Aird '91
Kevin H. Birkmayer '93
Keith J. Bona '92
James M. Donahue '91
Raphael E. Isaac '91
Alok K. Kapoor '93
Mark Nowakowski '92
Rohit C. Sharma '94
Peter C. Stoffel '94
Brian J. Stumm '92

KAPPA BETA
EDINBORO UNIVERSITY
\$70
Terry L. McCullough '93
Jonathan M. Weaver '91

LAMBDA BETA
JAMES MADISON UNIVERSITY
\$808
Steven T. Barham '94
David R. Grulke '97
J. Hall Jones '91
Paul H. Klewans '94
Richard L. McCoy, Jr. '92
R. Christopher Neal '91
Allen D. Schutz '97

MU BETA
SYRACUSE UNIVERSITY
\$400
John M. Arnold, '92
Jonathan Hotz '94
Brian S. Keller '92
Mark J. Krukonis '93
Jonathan H. Lay '98
Michael C. Markiewicz '93

David M. Orens '95
Nicholas M. Petruncio '99
Christopher J. Rottkamp '92

XI BETA
UNIVERSITY OF PITTSBURGH
\$120
Timothy A. Schrag '93
Joseph A. Webber '93

OMICRON BETA
WILLIAM PATERSON COLLEGE
\$45
Joel DeStaso '94
Michael J. Ostermueller '96

PI BETA
STOCKTON STATE COLLEGE
\$165
Cory P. Cuomo '92
James F. Flores '94
Jason A. Gross '93
Brian A. Martone '95

RHO BETA
EASTERN ILLINOIS UNIVERSITY
\$50
John J. Kelly '94

SIGMA BETA
UNIVERSITY OF NORTH CAROLINA AT GREENSBORO
\$70
Ralph P. Habib '94
Manzodula N. Tiya '97

TAU BETA
EAST TENNESSEE STATE UNIVERSITY
\$50
Michael W. Rogers '94

UPSILON BETA
CLEMSON UNIVERSITY
\$90
Adrian B. Garaghty '97
Donnie W. Plyler, Jr. '99
Kevin F. Richards '97

PHI BETA
COLLEGE OF WILLIAM AND MARY
\$25
Darren S. Tucker '95

CHI BETA
UNIVERSITY OF CHARLESTON
\$35
Steven R. Casto '96

PSI BETA
EAST STROUDSBURG UNIVERSITY
\$35
Scott D. Weiser '96

AT-LARGE MEMBERS
\$245
Henry S. Date
Glenn T. Gniemep
Robert D. Stalley



National Directory

GRAND CHAPTER NATIONAL BOARD OF DIRECTORS

President • (1998)

James F. Edgeworth, Sr., Psi '56
2800 Pleasant Hill Road
Maumee, OH 32537

President Elect • (2000)

Robert L. Swinney, Sigma '58
423 Golf Course Drive
Leonia, NJ 07605

Executive Vice President

Shawn M. Hoke, Phi Alpha '95
331 S. Main Street
Greensburg, PA 15601

Vice President/Standards and Risk Management • (1998)

William L. Nichol, Zeta '59
P.O. Box 534
Alloway, NJ 08001

Vice President/Finance,

Long Range Planning

Taskforce Chairman • (2000)
Douglas M. Rammel,
Pi Alpha '90
214 Glenoak Ave., Suite 500
Peoria, IL 61603

Vice President/Education • (2000)

Mark N. Lundgren, Nu '70
1100 Drexel Avenue
Drexel Hill, PA 19026

Vice President/

Alumni Affairs • (1998)

Mark S. West, Upsilon Alpha '88
74 Walnut Way Court
Saint Charles, MO 63304

Secretary • (2000)

Gerald L. Murray, Theta '66
6600 S. Overlook Drive
Daleville, IN 47334

Treasurer • (2000)

Edward B. Curtis, Rho '62
125 Roboda Boulevard
Royersford, PA 19468

Director/ Insurance

Programs • (2000)

J. Hall Jones, Lambda Beta '91
1417 East Cary St. Apt. 312
Richmond, VA 23219

Director/Chairman,

Constitution Committee • (1998)

Joshua L. Smith, Alpha Beta '93
Patterson and Ross
200 E. Randolph Dr. Suite 7300
Chicago, IL 60606-6969

Director • (1998)

David K. Bernstein,
Omicron Alpha '88
19 Patterson Avenue
Pennsville, NJ 08070

Director • (1998)

Richard O. Jones, Nu '64
49 South Bothwell
Palatine, IL 60067-6172

Director • (1998)

David D. Cardone,
Psi Alpha '98
209 Weaver Drive
Glenshaw, PA 15116

Director • (1998)

Ryan B. Hall, Eta '97
1408 Bowie Trail Apt. B
Owensboro, KY 42303

Director • (1998)

Christopher B. Miller, Tau Alpha '97
3026 N. Waterloo Court #2
Chicago, IL 60657

DIRECTORS EMERITUS

Robert D. Corrie, Beta '53
10 Ash Street
Garden City, NY 11530

Robert D. Lynd, Iota '67

9011 Swan Avenue
Millers Island, MD 21219

KAPPA DELTA RHO FOUNDATION

TRUSTEES

President

Paul A. Downes,
Gamma '69
RR 3, Box 121
Moravia, NY 13118-9521

Vice President/Investments

and Secretary

Ray C. Hunt, Jr., Rho '53
2699-11 Barracks Rd.
Charlottesville, VA 22901

Vice President/Annual

Campaign

Andrew W. Hibel, Eta '90
5421 NE River Rd. #308
Chicago, IL 60656

Treasurer

Robert D. Corrie, Beta '53
10 Ash Street
Garden City, NY 11530

Director of Gift

Planning and Development

William J. Paris, Eta '87
100 Hawthorne Road
Pittsburgh, PA 15221

Trustee

George J. Peer, Theta '45
95 Springline Lane
Savannah, GA 31411

Trustee

Andrew F. Barth,
Nu Alpha '83
1730 Windsor Road
San Marino, CA 91108

Trustee

John C. Carl, Theta '51
1 Sylvania Drive
Belleville, IL 62223-1235

INVESTMENT COMMITTEE

Chairman

Ray C. Hunt, Jr., Rho '53
2699-11 Barracks Rd.
Charlottesville, VA 22901

Members

Robert P. Youngman, Alpha '64
1130 Park Avenue
New York, NY 10128

Robert D. Corrie, Beta '53

10 Ash Street
Garden City, NY 11530

Andrew F. Barth, Nu Alpha '83
1730 Windsor Road
San Marino, CA 91108

William J. Paris, Eta '87

100 Hawthorne Road
Pittsburgh, PA 15221

SCHOLARSHIP COMMITTEE

Chairman

John David Reed, Ph.D., Eta '64
1044 West Hayes
Charleston, IL 61920

Members

Thomas L. Guthrie, Theta '62
8817 Gateview Drive
Fort Wayne, IN 46835-8825

Alan T. Lord, Kappa '72

406 E. Truman Avenue
Bowling Green, OH 43402

LAW SCHOLARSHIP

Paul W. Upson, Alpha '66

22 Sherborne Road
Lexington, MA 02173

ORDO HONORUM COMMITTEE

Chairman

John E. Booth, Zeta '51

Members

John S. Goodreds, Delta '56
Loran L. Stewart, Sigma '32
John A. Falcone, Rho '60
Claude T. Rich, Nu '29
Gordon R. Stanley, Delta '59

ORDER OF THE PEREGRINE FALCON COMMITTEE

Chairman

Daniel LaPlaca, Beta '96
G-0066, Box 8705
Williamsburg, VA 23187-8705

NATIONAL HEADQUARTERS STAFF

Executive Director/Editor

Shawn M. Hoke, Phi Alpha '95
331 South Main Street
Greensburg, PA 15601

Director of Chapter Services

Douglas T. Vogel, Tau Alpha '96

Office Manager

Suzanne Balash

Foundation/Alumni

Coordinator

Peg Zimmerman

Administrative Support

Mary Lou McLaughlin

CHAPTERS

ALPHA (Kappa Delta Rho Society Alpha Chapter)

Middlebury College
Middlebury, VT 05753

BETA

Cornell University
Ithaca, NY 14850

GAMMA (Inactive)

S.U.N.Y.
Albany, NY 12200

DELTA

Colgate University
Hamilton, NY 13346

EPSILON

Franklin College
Franklin, IN 46131

ZETA

Penn State University
University Park, PA 16802

ETA

University of Illinois
Champaign, IL 61820

THETA

Purdue University
West Lafayette, IN 46906

IOTA

Bucknell University
Lewisburg, PA 17837

KAPPA (Inactive)

Ohio State University
Columbus, OH 43200

LAMBDA

University of California
Berkeley, CA 94704

MU (Inactive)

University of Michigan
Ann Arbor, MI 48104

NU

Indiana University
Bloomington, IN 47401

XI (Inactive)

Colby College
Waterville, ME 04900

OMICRON (Inactive)

Butler University
Indianapolis, IN 46200

PI (Inactive)

Gettysburg College
Gettysburg, PA 17325

RHO

Lafayette College
Easton, PA 18042

SIGMA (Inactive)

Oregon State University
Corvallis, OR 97330

TAU

Carnegie Mellon
University
Pittsburgh, PA 15213

UPSILON (Inactive)

Fresno State University
Fresno, CA 93700

PHI (Inactive)

University of Oklahoma
Norman, OK 73069

CHI COLONY (Inactive)

University of Florida
Gainesville, FL 32601

PSI

Lycoming College
Williamsport, PA 17701

OMEGA

Indiana University of PA
Indiana, PA 15701

ALPHA ALPHA

Lock Haven University
Lock Haven, PA 17745

BETA ALPHA (Inactive)

C. W. Post College
Greenville, NY 11548

GAMMA ALPHA (Inactive)

Bradley University
Peoria, IL 61600

DELTA ALPHA (Inactive)

Rhode Island State
University
Providence, RI 02900

EPSILON ALPHA (Inactive)

Lewis University
Lockport, IL 60441

ZETA ALPHA (Inactive)

University of Dayton
Dayton, OH 45400

ETA ALPHA

Robert Morris College
Coraopolis, PA 15108

THETA ALPHA

Slippery Rock University
Slippery Rock, PA 16057

IOTA ALPHA

University of Pittsburgh/Johnstown
Johnstown, PA 15907

KAPPA ALPHA (Inactive)

Illinois State University
Normal, IL 61761

LAMBDA ALPHA (Inactive)

Gannon University
Erie, PA 16507

MU ALPHA (Inactive)

West Virginia University
Morgantown, WV 26505

NU ALPHA

Columbia University
New York, NY 10025

XI ALPHA

Temple University
Philadelphia, PA 19107

OMICRON ALPHA

Rutgers University
New Brunswick, NJ 08903

PI ALPHA

University of Toledo
Toledo, OH 43608

RHO ALPHA (Inactive)

Bryant College
Smithfield, RI 02917

SIGMA ALPHA (Inactive)

Hofstra University
Hempstead, NY 11551

TAU ALPHA

Radford University
Radford, VA 24141

UPSILON ALPHA

St. Louis University
St. Louis, MO 63108

PHI ALPHA

Clarion University
Clarion, PA 16214

CHI ALPHA (Inactive)

University of
Pittsburgh/Greensburg
Greensburg, PA 15601

PSI ALPHA

Behrend College
Erie, PA 16510

OMEGA ALPHA (Inactive)

Virginia Commonwealth Univ.
Richmond, VA 23220

ALPHA BETA

University of Delaware
Newark, DE 19717

BETA BETA

Ball State University
Muncie, IN 47303

GAMMA BETA (Inactive)

Virginia Tech
Blacksburg, VA 24060

DELTA BETA (Inactive)

West Liberty University
West Liberty, WV 26074

EPSILON BETA

Old Dominion University
Norfolk, VA 23508

ZETA BETA

Tarleton State University
Stephenville, TX 76402

ETA BETA

West Chester University
West Chester, PA 19380

THETA BETA (Inactive)

NY Institute of Technology
Central Islip, NY 11722

IOTA BETA

Rochester Institute of
Technology
Rochester, NY 14623

KAPPA BETA

Edinboro University
Edinboro, PA 16412

LAMBDA BETA

James Madison University
Harrisonburg, VA 22807

MU BETA

Syracuse University
Syracuse, NY 13210

NU BETA (Inactive)

Fordham University
Bronx, NY 10458

XI BETA (Inactive)

University of Pittsburgh
Pittsburgh, PA 15213

OMICRON BETA

William Paterson
University
Wayne, NJ 07070

PI BETA

Richard Stockton College
Pomona, NJ 08240

RHO BETA (Inactive)

Eastern Illinois University
Charleston, IL 61920

SIGMA BETA

University of
NC/Greensboro
Greensboro, NC 27413

TAU BETA (Inactive)

Eastern Tennessee
State University
Johnson City, TN 37614

UPSILON BETA

Clemson University
Clemson, SC 29632

PHI BETA

The College of
William and Mary
Williamsburg, VA 23186

CHI BETA

ATTENTION PARENTS

Does your son have a new address?

Please help us stay up to date. Send, fax, or e-mail any new information so that no fraternity event happens without his knowledge.

Name of Brother

School and
Year of Graduation

Old Address

New Address

Please send responses to:
Kappa Delta Rho, Inc.
331 South Main Street
Greensburg, PA 15601

Fax Number: 412.838.7101
E-mail: kdr@kdr.com

WE WANT TO HEAR FROM YOU



While The Quill & Scroll is the official magazine of the National Fraternity of Kappa Delta Rho, as a member, it is also **your** magazine. If you have feedback on this publication, ideas for articles, or would like to share your membership or professional experiences, then we want to hear from you. Please send your submissions to The National Fraternity of Kappa Delta Rho, c/o The Quill & Scroll, 331 South Main Street, Greensburg, PA 15601. The deadline for submissions for the Spring/Summer 1998 edition is March 1, 1998.

NATIONAL FRATERNITY JOINS FRMT, LTD.

Effective October 1, 1997, the National Fraternity's board of directors authorized the fraternity to become a member of FRMT, LTD., an off-shore captive reinsurance company formed by over 20 national Greek organizations. As a result of joining FRMT, LTD., the National Fraternity's Risk Management Policies will not change. Rather, the National Fraternity's insurance coverage will improve. Specifically, the aggregate liability limits available will increase from the current \$3 million to \$5 million. This enables the National Fraternity to meet the minimum coverage some universities require, a requirement of at least \$5 million.

During the past 12 months,

the board of directors appointed a director of Insurance Programs who is a member of the board and works with the headquarters in reviewing insurance program

needs for the National Fraternity. The director of Insurance Programs is J. Hall Jones, Jr., a 1991 graduate from the Lambda Beta Chapter at James Madison University.

By joining FRMT, LTD., the National Fraternity gains a tremendous advantage in stabilizing its insurance costs. FRMT, LTD. is comprised of 20 organizations, with approximately 40,000 undergraduate members. When FRMT, LTD. goes into the insurance market to reinsure its insurance risks, it is bringing the premium dollars available from those 40,000

members, as compared to the National Fraternity's 1,500 members. Thus, the willingness of insurance companies to reinsure FRMT, LTD. is much greater than to insure the National Fraternity. As a result, the fraternity's insurance availability and cost should be more stable.

The fraternity's risk management assessment (a member) for each undergraduate had risen from \$50 a man in 1993 to \$80 a man this fall. As a result of joining FRMT, LTD. the national fraternity has been able to hold the risk management assessment at \$80 per man this fall—the same rate it was last fall.

The fraternity's risk management policies will not change. The National Fraternity will remain a member of FIPG, INC., the Greek world's premier risk

Anyone wishing a copy of the Risk Management Policy should contact Peg Zimmerman at the National headquarters.



Kappa Delta Rho, Inc.
National Headquarters
331 South Main Street
Greensburg, PA 15601

Address Service Requested

NON PROFIT
ORGANIZATION
US POSTAGE PAID
PERMIT # 1715
PITTSBURGH, PA 15290