

ZETA PSI







To

Frank C. Ewart

In appreciation of his earnest  
cooperation in the establishment  
of Zeta Psi Fraternity

## PURDUE UNIVERSITY

Purdue University was founded in 1869 as a result of an act passed by the National Congress in 1862. In consideration of the donation of money and land made by John Purdue, the state permanently named the institution "Purdue University". Since it's founding, Purdue has steadily grown until at present it ranks among the highest Agricultural and Engineering schools in the United States.

There are at present thirty-two buildings on the Campus, most of which have been erected during the past twenty years. Plans have been made for a Student Union building and the financial campaign is almost ended with promises of great success. The building is to cost a million and a quarter dollars and is to be dedicated to the Purdue men who so nobly gave their lives in the Great War.

There are about 3000 students in the University, with a faculty of 280 members. The University is divided into the schools of Agriculture, Science and Technology.

## ZETA PSI

In March, 1920, a small group of men met and organized Zeta Psi Fraternity. The nucleus of this organization was four Kappa Delta Rho men from the Epsilon Chapter.

The principles of Zeta Psi were similiar to those of Kappa Delta Rho in many ways, for men who were familiar with those principles took an active part in the organization of the fraternity.

Owing to a faculty ruling, no fraternity may be recognized by the authorities until it has been organized for a period of six months. However, at the beginning of the present school year, permission was given by the Dean of Men, that we proceed with our plans. We did not secure a house until the first part of November, but the spirit of the men had not suffered during the long period of uncertainty, and they entered the new house with great enthusiasm. We entered the Inter-fraternity Athletic League and took steps to become recognized on the Campus.

We hope to secure for next year a much better house, and to enter many more activities than we take part in at present. We have not pledged any freshmen for two reasons; one, because we have hesitated to pledge men while in our unsettled condition; the other, that we might feel more sure of our men before pledging them. In conclusion, our policy is to expand with the greatest of care in order to maintain our principles, and lay a secure foundation on which to grow.

## ROLL CALL

Walter R.Barkley

Ralph H.Cade

Raymond E.Heithecker

Charles E.Corbin

Raymond C.Herrin

James H.Chittenden

Edgar W.McIlvain

Raymond E.Culbertson

Merritt B.Miller

Harold E.Dufendach

E.Paul Myers

Willis R.Foster

Herbert E.Pedlow

Richard N.Glendenning

Dale O.Tomey

William A.Harvey

Gail H.Tomey

Herman M.Hayes

Oscar R.Winchester



Merritt B. Miller.  
Electrical Engineering '21.  
Alma, Michigan.

Miller is an ex-'15 man, having served during the war as Motor Transport Officer and as Commanding Officer of the 15th. Supply Train. After his discharge, he was chief draftsman for the Texas Company, and designed the high pressure stills for the Port Arthur Works. He is an associate member of the American Institute of Electrical Engineers and a member of the Tau Beta Pi honorary fraternity.



Ralph H. Cade.  
Civil Engineering S.  
Sandborn, Indiana.

"Boxer" is a charter member of the Epsilon Chapter of Kappa Delta Rho at Franklin College. He entered Purdue in 1919, and soon became interested in the establishment of a chapter of his fraternity. Much of the progress of Zeta Psi has been due to his efforts. Cade plays on the fraternity basketball team and is one of our best scorers. He intends to specialize in both hydraulic and highway engineering.





William A. Harvey.  
Mechanical Engineering ' S.  
Fairmount, Indiana.

"Lonnie" is a charter member of the Epsilon Chapter of Kappa Delta Rho, and has proved an "Old Reliable" in the organization of Zeta Psi. His optimism has proved of great value during our darkest days. Harvey wields a wicked racquet on the tennis court, and bids fair for next seasons championship. Member of the Purdue Society of Mechanical Engineers.



Herman M. Hayes.  
Agriculture '22.  
Greenwood, Indiana.

Herman attended Franklin College for two years, being a charter member of the Epsilon Chapter of Kappa Delta Rho fraternity. He is a noted Humorist and has a broad smile for everyone. Herman's untiring efforts have helped in many ways to make Zeta Psi Fraternity possible. He is a member of the Society Of Agriculture and the Y.M.C.A. Specializing in Agronomy.



Raymond C.Herrin.  
Agriculture '22.  
Hartford City, Indiana.

Herrin's favorite expression is "Pipe down, Engineers!" He believes in burning the midnight oil--- but gets his reward for it. His string of A's is incomparable. He is a member of the Carlyle Literary Society, the Agricultural Society, and the Friendship Council of the Y.M.C.A.



Willis R. Foster  
Agriculture '22  
Albion, Indiana.

Foster rounds out our quartet of "Raymonds". He is of the type known to ladies as "blond", but contrary to one's expectations, he is not in the least of a fickle disposition. He is quiet and studious but is ever ready for a bit of fun. He is a charter member of the Campus Literary Society, is a member of Purdue Agricultural Society and of the Y.M.C.A.



Raymond E. Culbertson.  
Civil Engineering '22.  
Indianapolis, Indiana.

Culbertson's hobby is the levying of fines upon unsuspecting fraternity brothers. As a warden he makes a good judge. Ray made his numeral in class football this season, and plays a good game of basketball. He is a lieutenant in the Purdue R.O.T.C., and is a member of the Purdue Society of Civil Engineers.





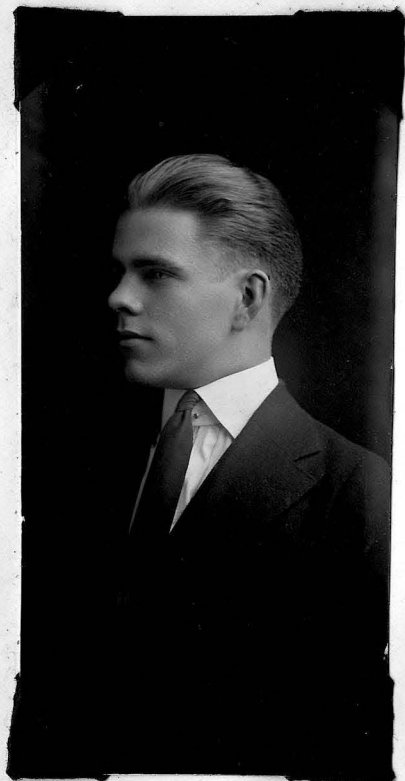
Herbert E. Pedlow.  
Civil Engineering '22.  
Indianapolis, Indiana.

"Herb" is one of our most enthusiastic workers. He is working his way through the university, but this does not interfere with his scholastic standing in the least. His fondness for a good joke and his good nature has won for him many friends. He is a good basketball player and ably fills the position of floor guard on the fraternity team. Member of the Purdue Society of Civil Engineers. Specialty--Structural Engineering.



Gail H. Tomey.  
Civil Engineering '22.  
Elnora, Indiana.

"Hastings" graduated from High School in 1918, and entered Purdue the fall following. His sport is baseball and while at Civil Engineering Camp last summer, he showed the natives of Michigan something about outfielding. The design on the cover page of this book is an expression of his artistic ability. He is a member of the Emersonian Literary Society and the Purdue Society Of Civil Engineers.  
Specialty - Structural Engineering.



Dale O. Tomey.  
Civil Engineering '22  
Elnora, Indiana.

"Smitty" is the younger twin brother of Hastings and between them they keep people guessing. He is a member of Emersonian Literary society, the Purdue Society of Civil Engineers and the Y.M.C.A. He is an active worker and has made many friends.  
Specialty - Structural Engineering.





Charles E. Corbin.  
Chemical Engineering S.  
Sandborn, Indiana.

"Fatty" hails from Franklin College  
where he was a charter member of the  
Epsilon Chapter of Kappa Delta Rho.  
Although he has been with us only a  
short time he has made many friends.  
He is a musician of some ability.  
He belongs to the Society of Chemical  
Engineers and the Purdue Y.M.C.A.



Walter R. Barkley.  
Mechanical Engineering '23.  
Parker, South Dakota.

"Bark" taught school two years, and saw service in the Army before coming to Purdue. Tennis is Barkley's favorite game, and he is no mean player. He is a member of the American Society of Mechanical Engineers and the Emersonian Literary Society.



James Harold Chittenden.  
Electrical Engineering '23.  
Vevay, Indiana.

"Chick's" home is on the banks of the  
"Beautiful Ohio". He took a short course  
in wireless telegraphy at Valparaiso  
University, and attended Franklin College  
for one semester before coming to Purdue.  
He is a member of the Carlyle Literary  
Society, and the Friendship Council of  
the Purdue Y.M.C.A.



Harold E. Dufendach.  
Agriculture '23.  
Kokomo, Indiana.

Dufendach was a student of high standing at Swarthmore College before coming to Purdue. He is a member of the Purdue Military Band, has high scholastic standing, and a moral character well above the average.



Richard N. Glendenning.  
Agriculture '23  
Geneva, Indiana.

Richard, after spending a year with our old rival I.U. deserted the halls of liberal arts in order to learn how to be a practical farmer. He is a congenial fellow and has a host of friends, including several popular Co-Eds. He is a member of the Purdue Agricultural Society and the Y.M.C.A.  
Specialty- General Agriculture.





Raymond E. Heithecker.  
Mechanical Engineering '23.  
Plainville, Indiana.

Raymond attended Indiana State Normal a year, taught school a year, and after traveling extensively throughout the United States came to Purdue in the fall of 1919. He is a Mason, a member of the Purdue Military Band, and the Purdue Society of Mechanical Engineers. He has a pleasing personality which has won him many friends.



Edgar W. McIlvain  
Electrical Engineering '23  
Zionsville, Indiana.

"Mac" probably has a wider circle of acquaintances on the Campus than any other in our group. He is the manager of our fraternity athletics. He is Vice President of the Forum debating Society. He is a member and on the executive board of the student branch of the A.I.E.E. and is on the Y.M.C.A. employment board.



Eli Paul Myers.  
Civil Engineering '23.  
Elnora, Indiana.

"Eli" came to Purdue from Indiana State Normal College. After one year of teaching, he decided on a course in Engineering, this accounting for his being in our midst. He is a member of Emersonian Literary Society, and the Y.M.C.A.





Oscar R. Winchester.  
Agriculture '23.  
Greenwood, Indiana.

Winchester is another ex-Franklin man who came to Purdue to take up Agriculture. "Still water runs deep" is the saying that may well be applied to Oscar, but his grades show that he is not at all silent in the classroom. He is a member of the Agricultural Society, and the Purdue Y.M.C.A.

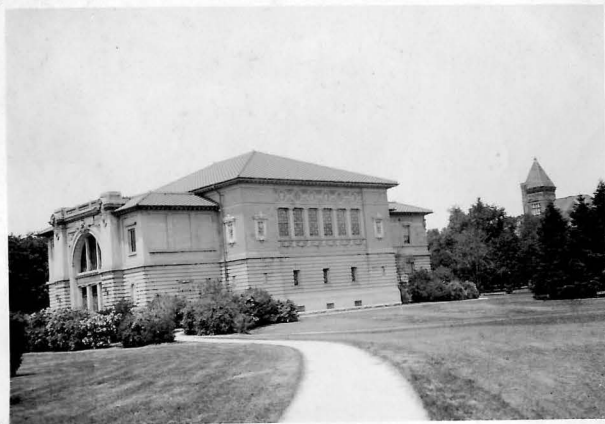
## LAST BUT NOT LEAST

The Zeta Psi Fraternity hereby makes its formal application to the National Organization of Kappa Delta Rho for a charter. We desire such a charter for the following reasons:

1. Knowing the ideals of Kappa Delta Rho, as we do, we realize what an advantage it would be, to be a part of it.
2. Standing alone, in more or less competition with numerous other strong fraternities on the campus, we appreciate the value of a Brotherhood with fraternities in other schools, who have ideals in harmony with our own.
3. Since, in the founding of the Zeta Psi Fraternity, we were assisted by Kappa Delta Rho men, we feel a bond of friendship existing between this chapter and the National Organization of Kappa Delta Rho.



Mechanical  
Engineering  
Laboratory



Eliza  
Fowler  
Hall

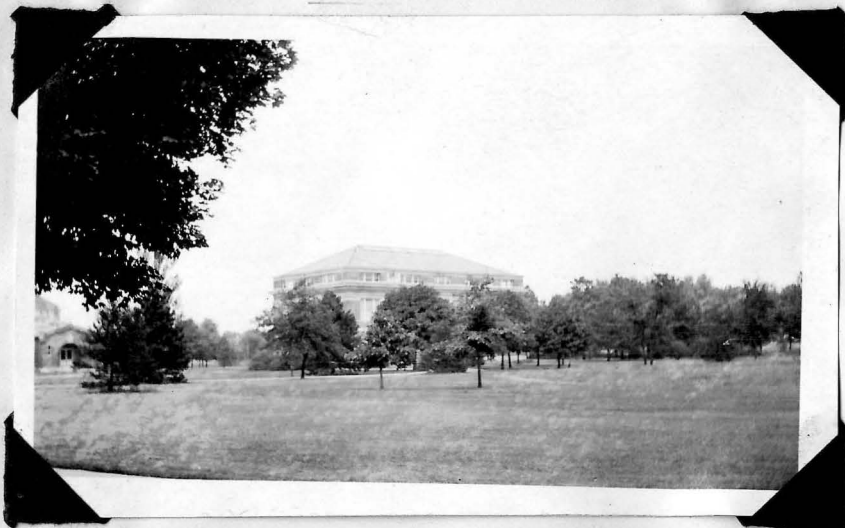


Library

"Smiles"



Our House



Civil Engineering Building.



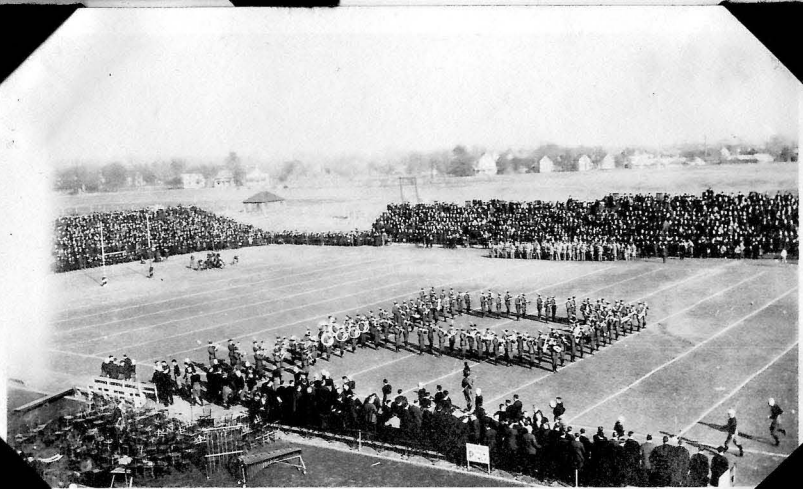
Purdue Armory.





The Oval  
Center of the Campus

Purdue Band in "P" formation,  
Purdue-Indiana game, November 20.





A glimpse of the Wabash  
from Tecumseh Trail.

Monument at Tippecanoe  
Battle Ground in memory  
of those who lost their  
lives in the Battle of  
Tippecanoe, 1811.

